

GRAMMA API

RECEIVED
OCT 28 1982

O. C. D.
ARTESIA OFFICE

--45

75

S.P. MV

0

1

RESISTANCE OHMS

PROPERTY OF
CIBOLA ENERGY
CORP.

COMPU-LOG V8L2 PLDT 03-20-82

22N-27-9S-28E-3822.8

SIBOLA ENERGY

27SWELL N.M.

WELL DIAMETER : 05.0

WELL # 9010 - 097

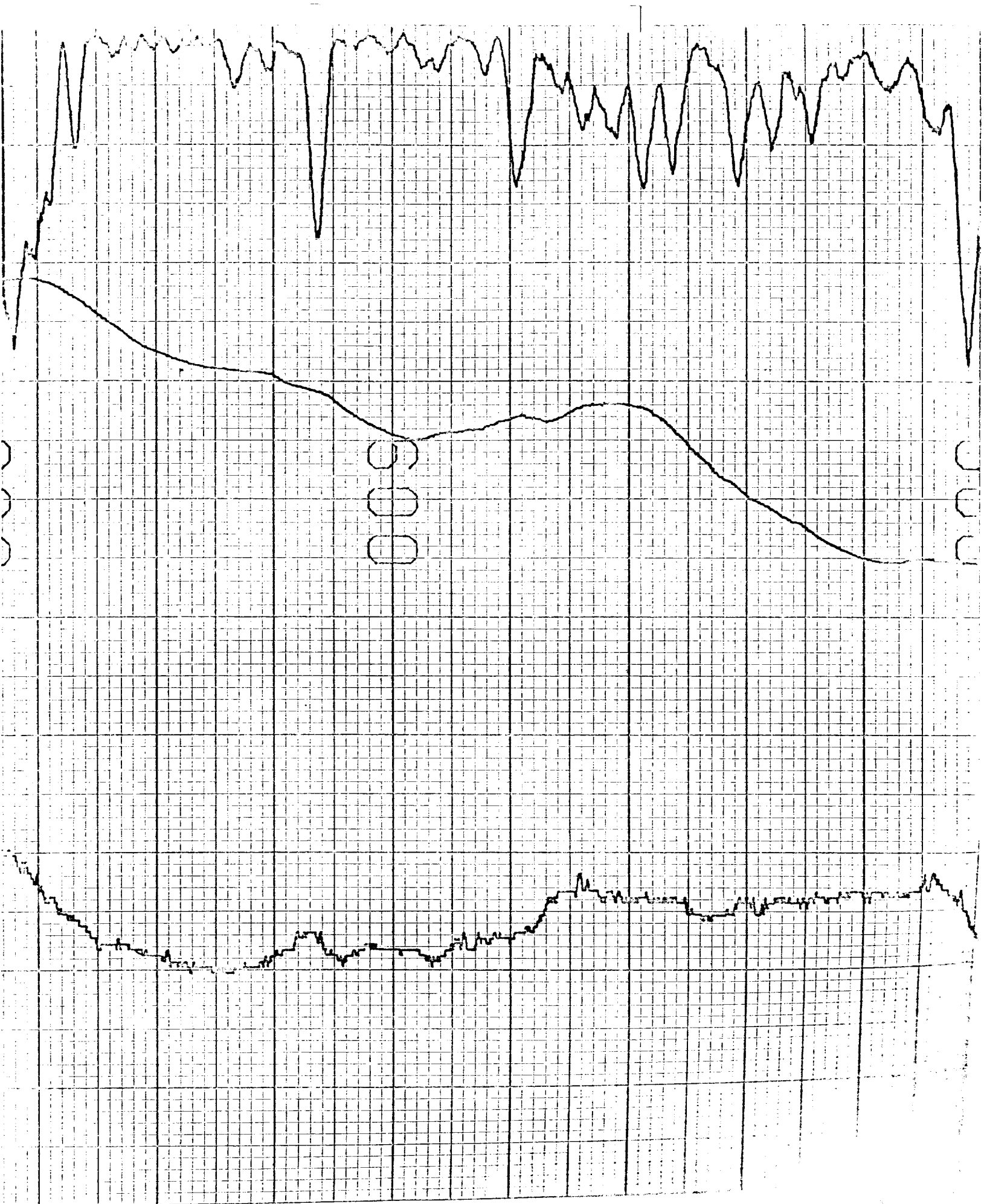
WELL V71200

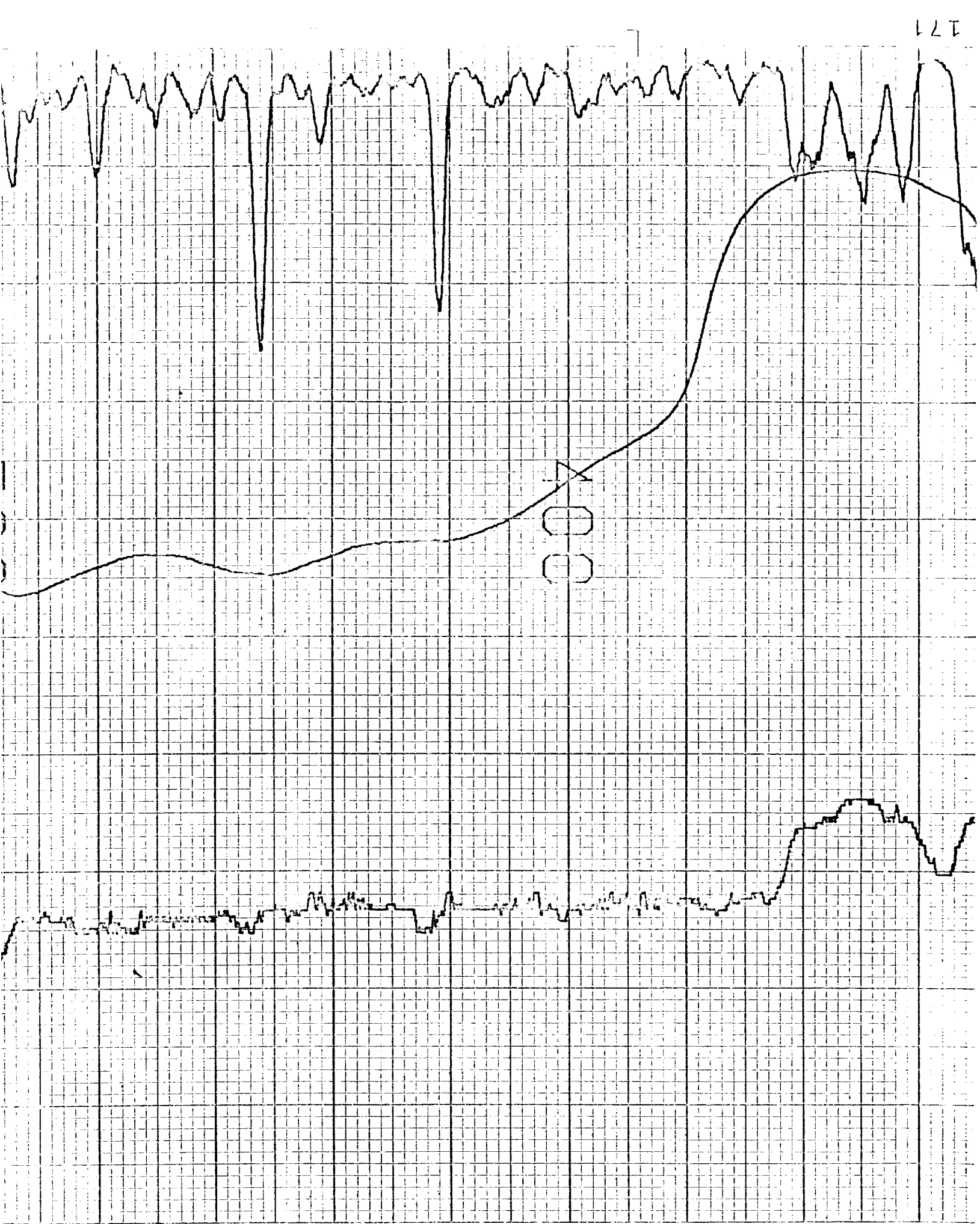
TRUCK # 7665

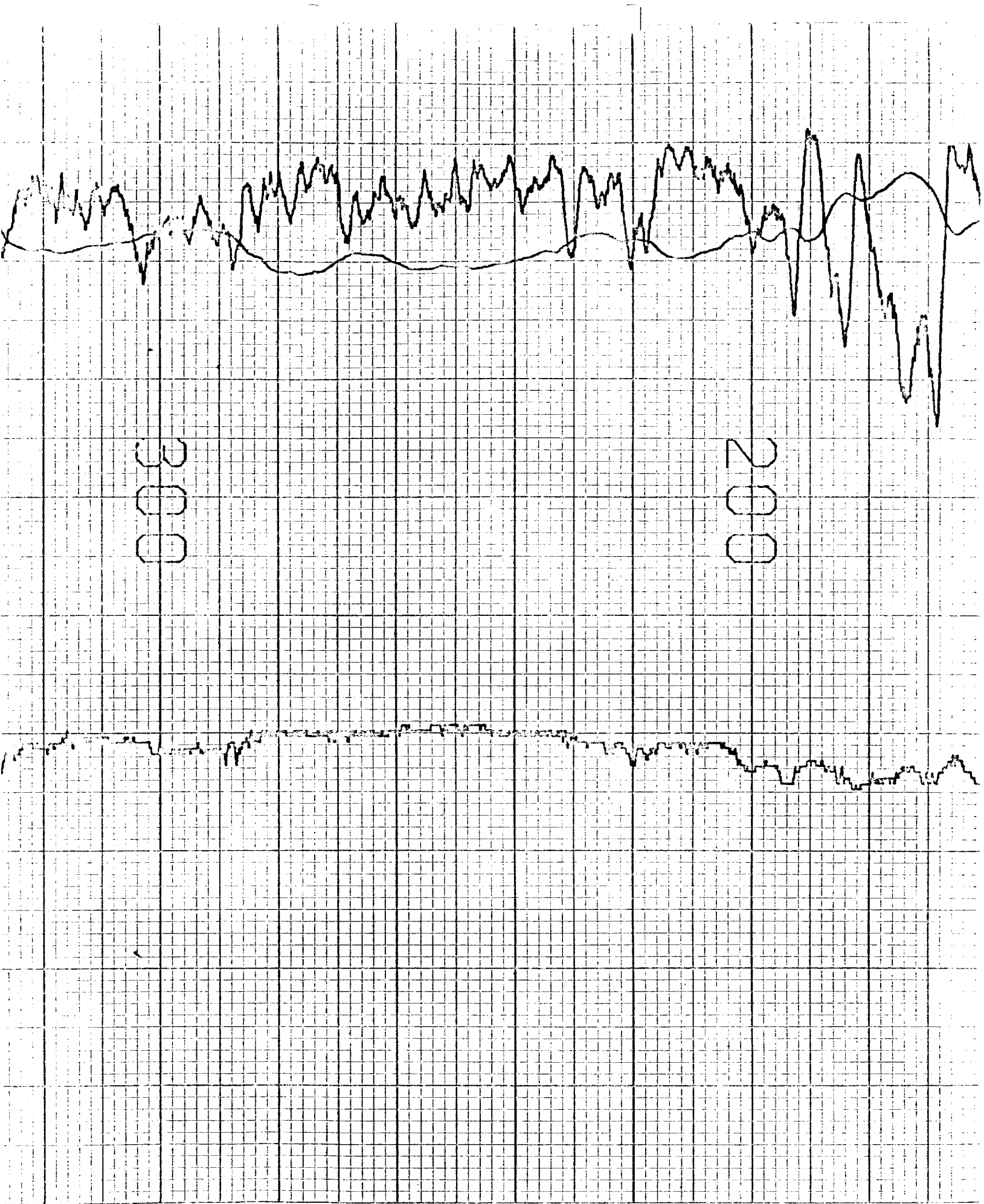
WELL DAT

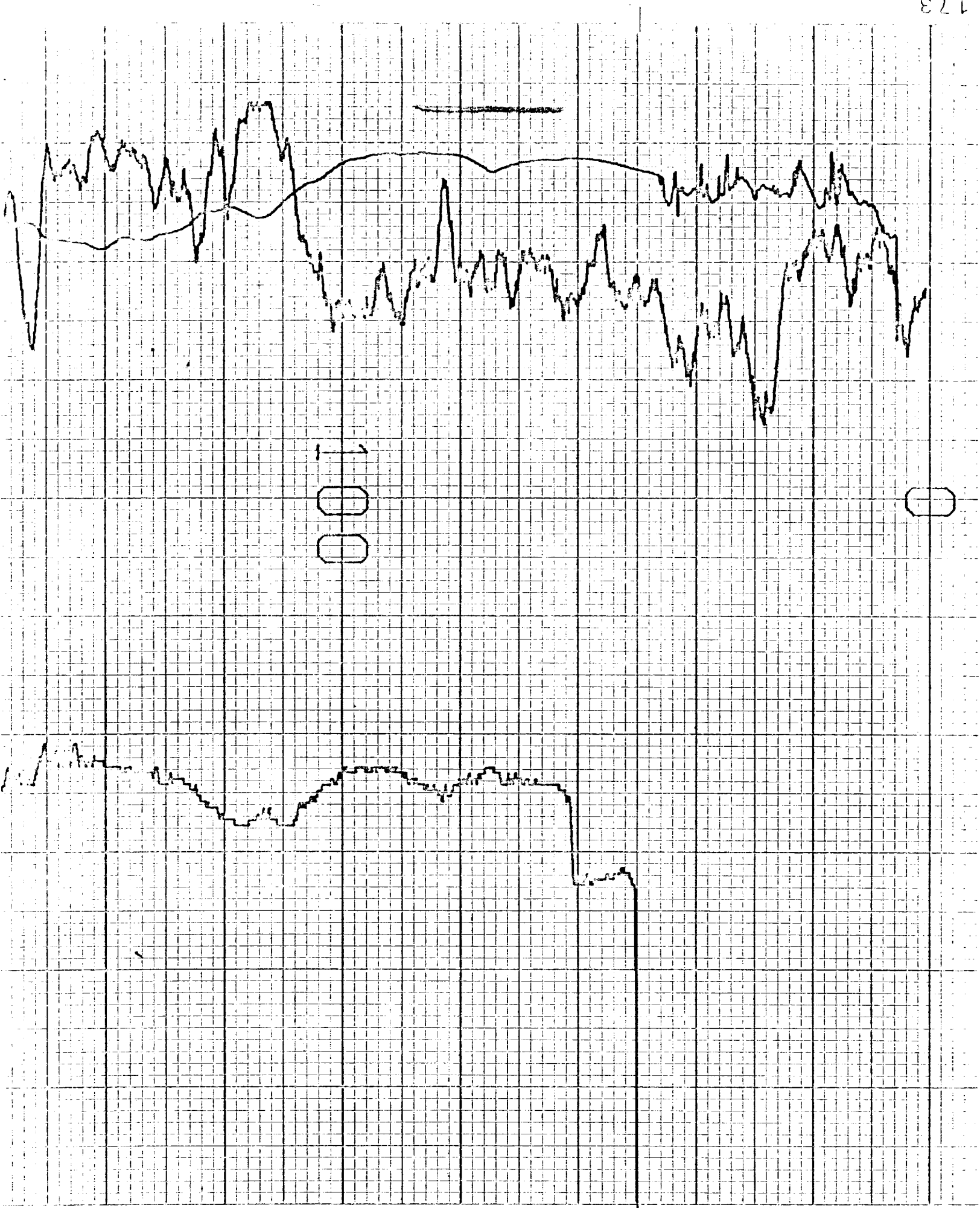
APPL. #3

L









| | |
|------------------------|---|
| NO. OF COPIES RECEIVED | 3 |
| DISTRIBUTION | |
| SANTA FE | 1 |
| FILE | 1 |
| U.S.G.S. | |
| LAND OFFICE | |
| OPERATOR | 1 |

NEW MEXICO OIL CONSERVATION COMMISSION

RECEIVED

JAN 27 1982

O. C. D.
ARTESIA, OFFICE

Form C-101
Revised 1-1-81

5A. Indicate Type of Lease
STATE ☐ FEDERAL ☒

5. State Oil & Gas Lease No.

APPLICATION FOR PERMIT TO DRILL, DEEPEN, OR PLUG BACK

a. Type of Work

DRILL ☒

DEEPEN ☐

PLUG BACK ☐

b. Type of Well

Stratigraphic
Test Hole

SINGLE
ZONE ☐

MULTIPLE
ZONE ☐

c. Name of Operator

Cibola Energy Corporation

d. Address of Operator

P.O. Box 1668, Albuquerque, New Mexico 87103

e. Location of Well

UNIT LETTER N LOCATED 1980 FEET FROM THE West LINE

AND

660 FEET FROM THE South LINE OF SEC. 27 TWP. 9S RGE. 28E NMPM

11. County

Chaves

18. Proposed Depth

19A. Formation

20. Rotary or C.T.

Rotary

21. Elevations (Show whether D.F., H.I., etc.)

21A. Kind & Status Plug. Bond

Statewide

21B. Drilling Contractor

Harry Bevers

22. Approx. Date Work will start

1-27-82

23.

PROPOSED CASING AND CEMENT PROGRAM

| SIZE OF HOLE | SIZE OF CASING | WEIGHT PER FOOT | SETTING DEPTH | SACKS OF CEMENT | EST. TOP |
|--------------|----------------|-----------------|---------------|-----------------|----------|
| 4 1/2" | N/A | N/A | N/A | N/A | N/A |
| | | | | | |
| | | | | | |

We plan to drill a 4 1/2" hole 20' into Yates formation. A Gamma Ray log will be run to determine the top of the Yates. A suitable cement plug will be pumped into the hole to plug from TD to the top of the water zone. Location will be cleaned and marker set.

THIS WELL IS BEING DRILLED AS A STRATIGRAPHIC TEST-HOLE FOR GEOLOGICAL INFORMATION ONLY AND UNDER NO CIRCUMSTANCES WILL IT BE PRODUCED.

IN ABOVE SPACE DESCRIBE PROPOSED PROGRAM: IF PROPOSAL IS TO DEEPEN OR PLUG BACK, GIVE DATA ON PRESENT PRODUCTIVE ZONE AND PROPOSED NEW PRODUCTIVE ZONE, GIVE BLOWOUT PREVENTER PROGRAM, IF ANY.

I hereby certify that the information above is true and complete to the best of my knowledge and belief.

Signed Cecilia Sigil Title Drilling Secretary Date 1-25-82

(This space for State Use)

APPROVED BY Mike Williams TITLE OIL AND GAS INSPECTOR DATE JAN 29 1982

CONDITIONS OF APPROVAL, IF ANY:

NEW MEXICO OIL CONSERVATION COMMISSION
WELL LOCATION AND ACREAGE DEDICATION PLAT

RECEIVED

Form C-192
Supersedes C-128
Effective 1-1-65

JAN 29 1982

All distances must be from the outer boundaries of the Section.

| | | | | | | |
|----------------------------------|----------------------|----------------------------|-----------------------------------|-------------------------|-----------------------------------|---|
| Operator Cibola Energy | | | Lease Cibola Start Test | | O. C. D. ARTESIA OFFICE | Well No. Cibola Start 22-N |
| Unit Letter N | Section 27 | Township 9 South | Range 28 East | County Chaves | | |

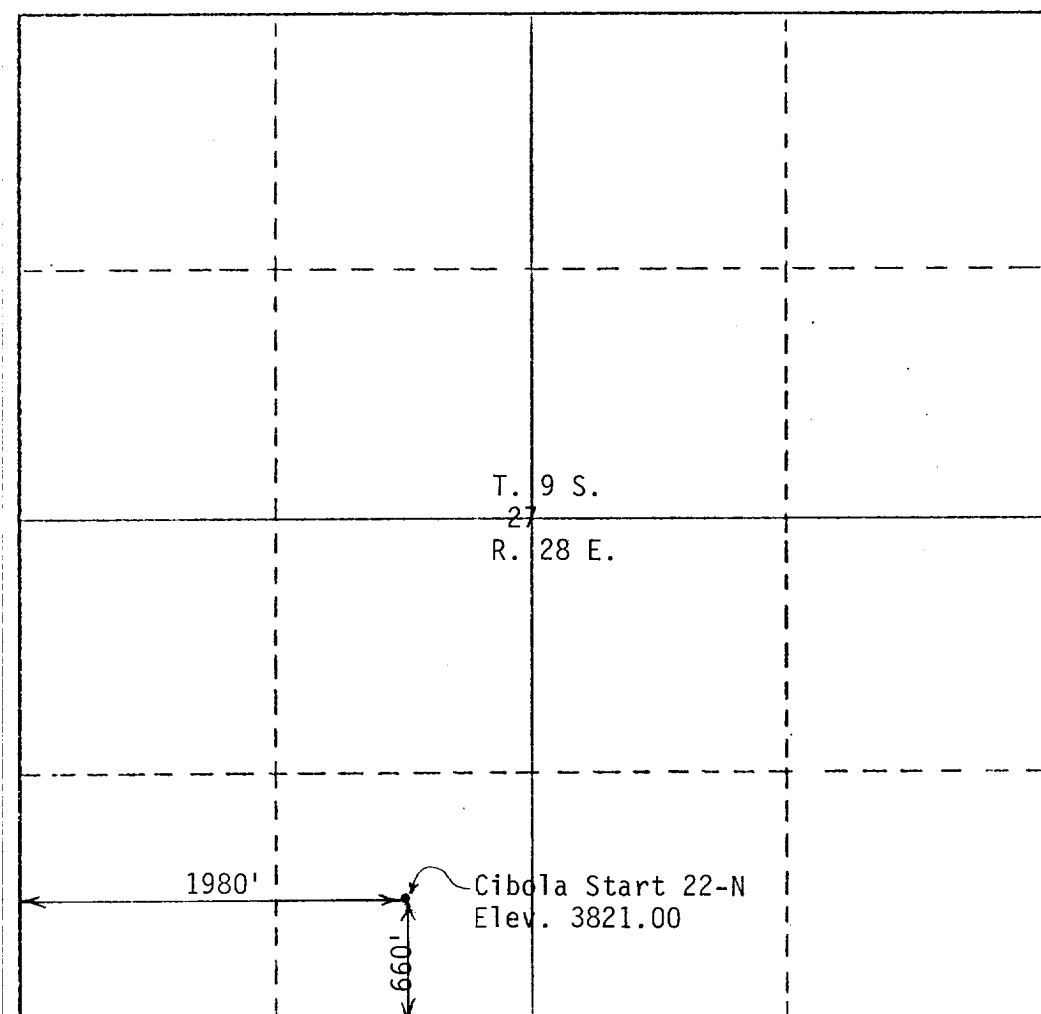
Actual Footage Location of Well:
1980 feet from the **west** line and **660** feet from the **south** line.
 Ground Level Elev. **3821.0** Producing Formation _____ Post _____ Dedicated Acreage _____

1. Outline the acreage dedicated to the subject well by colored pencil or hachure marks on the plat below.
2. If more than one lease is dedicated to the well, outline each and identify the ownership thereof (both as to working interest and royalty).
3. If more than one lease of different ownership is dedicated to the well, have the interests of all owners been consolidated by communitization, unitization, force-pooling, etc?

☐ Yes ☐ No If answer is "yes," type of consolidation _____

If answer is "no," list the owners and tract descriptions which have actually been consolidated. (Use reverse side of this form if necessary.) _____

No allowable will be assigned to the well until all interests have been consolidated (by communitization, unitization, forced-pooling, or otherwise) or until a non-standard unit, eliminating such interests, has been approved by the Commission.



CERTIFICATION

I hereby certify that the information contained herein is true and complete to the best of my knowledge and belief.

[Signature]
Name

R. B. Wright
Position

Agent
Company

Cibola Energy Corp.
Date

1/27/82

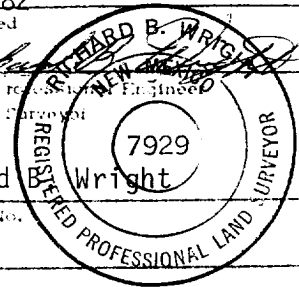
I hereby certify that the well location shown on this plat was plotted from field notes of actual surveys made by me or under my supervision, and that the same is true and correct to the best of my knowledge and belief.

1/27/82
Date Surveyed

[Signature]
Registered Professional Engineer and/or Land Surveyor

Richard B. Wright
Certificate No.

7929



NEW MEXICO OIL CONSERVATION COMMISSION
WELL LOCATION AND ACREAGE DEDICATION PLAT

RECEIVED

Form C-171
Supersedes C-128
Effective 1-1-65

JAN 29 1982

All distances must be from the outer boundaries of the Section

O. C. D.

| | | | | | | |
|----------------------------------|----------------------|-----------------------------------|-------------------------|-------------------------|--|-----------------------------------|
| Operator Cibola Energy | | Lease Cibola Start Test | | ARTESIA, OFFICE | | Well No. Cibola Start 22-N |
| Unit Letter N | Section 27 | Township 9 South | Range 28 East | County Chaves | | |

Actual Well Type Location of Well:

1980 feet from the **west** line and **660** feet from the **south** line

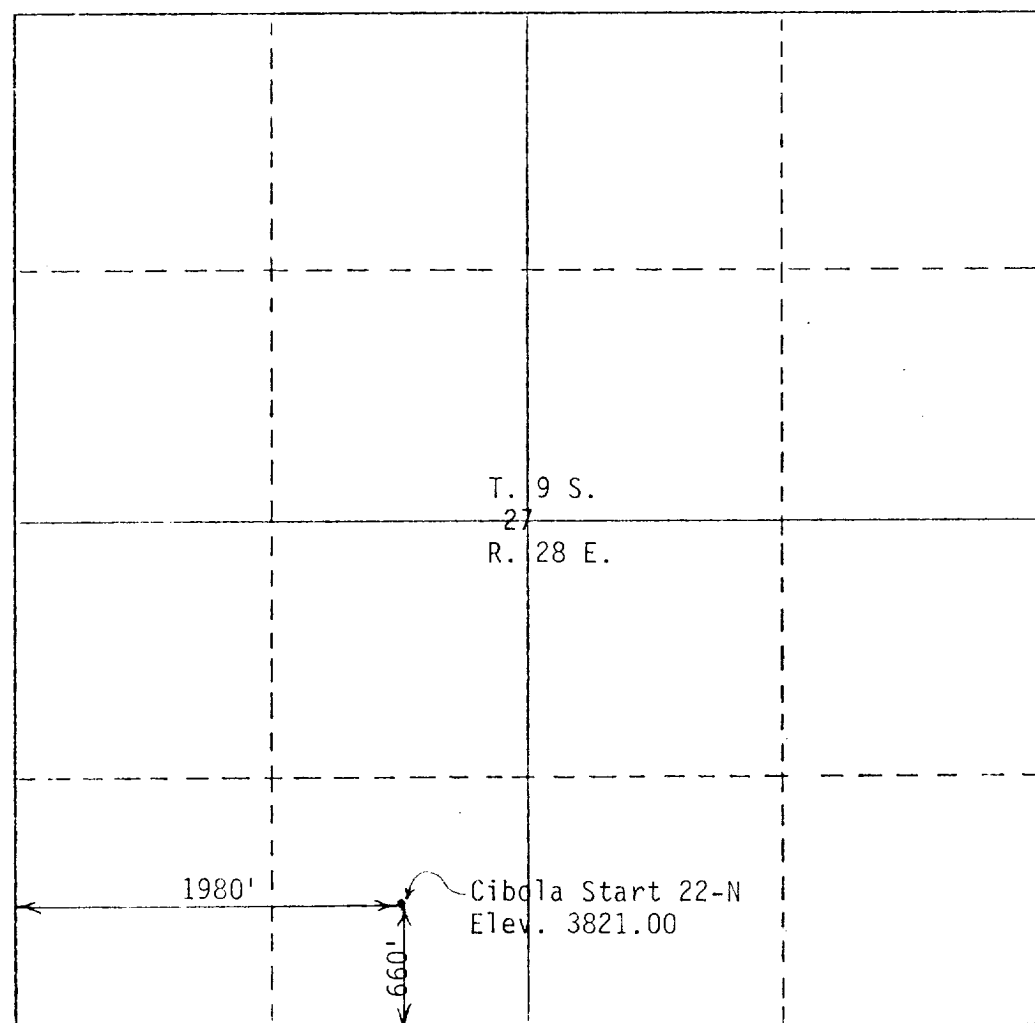
Ground Level Elev. **3821.0**

1. Outline the acreage dedicated to the subject well by colored pencil or hatchure marks on the plat below.
2. If more than one lease is dedicated to the well, outline each and identify the ownership thereof (both as to working interest and royalty).
3. If more than one lease of different ownership is dedicated to the well, have the interests of all owners been consolidated by communitization, unitization, force-pooling, etc?

☐ Yes ☐ No If answer is "yes," type of consolidation _____

If answer is "no," list the owners and tract descriptions which have actually been consolidated. (Use reverse side of this form if necessary.) _____

No allowable will be assigned to the well until all interests have been consolidated (by communitization, unitization, forced-pooling, or otherwise) or until a non-standard unit, eliminating such interests, has been approved by the Commission.



CERTIFICATION

I hereby certify that the information contained herein is true and complete to the best of my knowledge and belief.

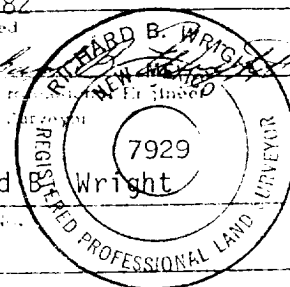
Name R. B. Wright
Position Agent
Company Cibola Energy Corp.
Date 1/27/82

I hereby certify that the well location shown on this plat was plotted from field notes of actual surveys made by me or under my supervision, and that the same is true and correct to the best of my knowledge and belief.

Date Surveyed 1/27/82
Registered Professional Land Surveyor
under Land Surveyor

Richard B. Wright

7929



NEW MEXICO OIL CONSERVATION COMMISSION
WELL LOCATION AND ACREAGE DEDICATION PLAT

RECEIVED

Form C-172
Supersedes C-128
Effective 1-1-65

JAN 29 1982

All distances must be from the outer boundaries of the Section

| | | | | | | | |
|----------------------------------|----------------------|-----------------------------------|-------------------------|-----------------------------------|--|-----------------------------------|--|
| Operator Cibola Energy | | Lease Cibola Start Test | | O. C. D. ARTESIA OFFICE | | Well No. Cibola Start 22-N | |
| Unit Letter N | Section 27 | Township 9 South | Range 28 East | County Chaves | | | |

Actual Well Location of Well:

1980 feet from the **west** line and **660** feet from the **south** line

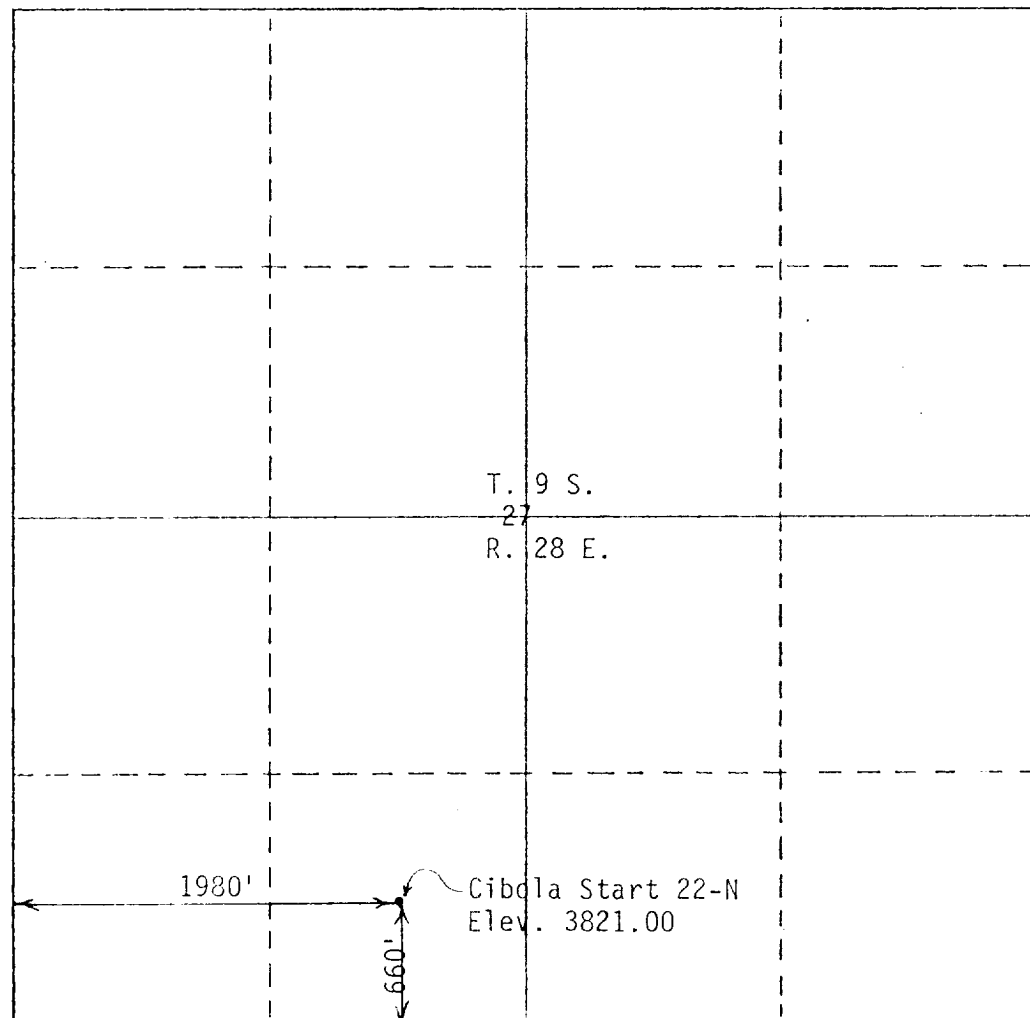
| | | | |
|-------------------------------------|-------------------|------|------------------|
| Ground Level Elev. 3821.0 | Forming Formation | Foot | Drill Hole Depth |
|-------------------------------------|-------------------|------|------------------|

1. Outline the acreage dedicated to the subject well by colored pencil or hatchure marks on the plat below.
2. If more than one lease is dedicated to the well, outline each and identify the ownership thereof (both as to working interest and royalty).
3. If more than one lease of different ownership is dedicated to the well, have the interests of all owners been consolidated by communitization, unitization, force-pooling, etc?

☐ Yes ☐ No If answer is "yes," type of consolidation _____

If answer is "no," list the owners and tract descriptions which have actually been consolidated. (Use reverse side of this form if necessary.) _____

No allowable will be assigned to the well until all interests have been consolidated (by communitization, unitization, forced-pooling, or otherwise) or until a non-standard unit, eliminating such interests, has been approved by the Commission.



CERTIFICATION

I hereby certify that the information contained herein is true and complete to the best of my knowledge and belief.

Name
R. B. Wright

Position
Agent

Company
Cibola Energy Corp.

Date
1/27/82

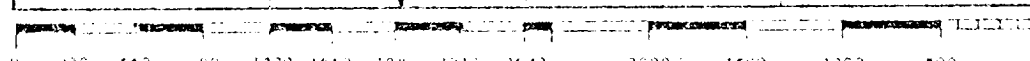
I hereby certify that the well location shown on this plat was plotted from field notes of actual surveys made by me or under my supervision, and that the same is true and correct to the best of my knowledge and belief.

Date Surveyed
1/27/82

Registered Professional Land Surveyor
Richard B. Wright

7929

7929



NEW MEXICO OIL CONSERVATION COMMISSION
WELL LOCATION AND ACREAGE DEDICATION PLAT

RECEIVED

Form C-107
Supersedes C-128
Effective 1-1-65

JAN 29 1982

All distances must be from the outer boundaries of the Section

| | | | | | | | |
|----------------------------------|----------------------|-----------------------------------|-------------------------|------------------------------------|--|-----------------------------------|--|
| Operator Cibola Energy | | Lease Cibola Start Test | | O. C. D. ARTESIA, OFFICE | | Well No. Cibola Start 22-N | |
| Unit Letter N | Section 27 | Township 9 South | Range 28 East | County Chaves | | | |

Actual Well Location of Wells:

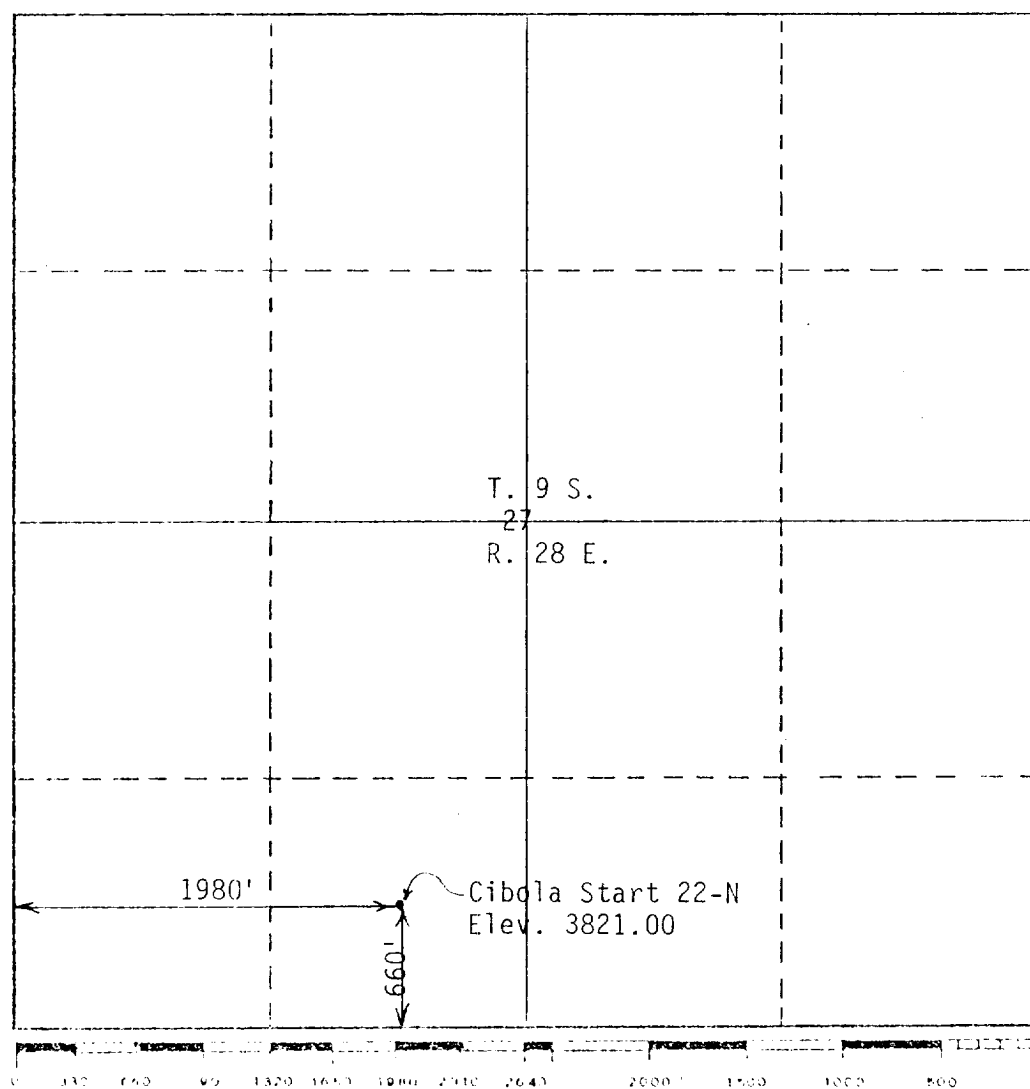
| | | | | | |
|-------------------------------------|---------------------------|----------|------------|----------------------------|------|
| 1980 | Feet from the west | Line and | 660 | Feet from the south | Line |
| Ground Level Elev. 3821.0 | Forming Formation | | Feet | Feet from 1/2 corner | |

1. Outline the acreage dedicated to the subject well by colored pencil or hatchure marks on the plat below.
2. If more than one lease is dedicated to the well, outline each and identify the ownership thereof (both as to working interest and royalty).
3. If more than one lease of different ownership is dedicated to the well, have the interests of all owners been consolidated by communitization, unitization, force-pooling, etc?

☐ Yes ☐ No If answer is "yes," type of consolidation _____

If answer is "no," list the owners and tract descriptions which have actually been consolidated. (Use reverse side of this form if necessary.) _____

No allowable will be assigned to the well until all interests have been consolidated (by communitization, unitization, forced-pooling, or otherwise) or until a non-standard unit, eliminating such interests, has been approved by the Commission.



CERTIFICATION

I hereby certify that the information contained herein is true and complete to the best of my knowledge and belief.

Name R. B. Wright
Position Agent
Company Cibola Energy Corp.
Date 1/27/82

I hereby certify that the well location shown on this plat was plotted from field notes of actual surveys made by me or under my supervision, and that the same is true and correct to the best of my knowledge and belief.

Date Surveyed 1/27/82
Registered Professional Land Surveyor
Richard B. Wright
7929

NEW MEXICO OIL CONSERVATION COMMISSION
WELL LOCATION AND ACREAGE DEDICATION PLAT

RECEIVED

Form C-111
Superseded C-120
Effective 1-1-65

JAN 29 1982

All distances must be from the outer boundaries of the Section

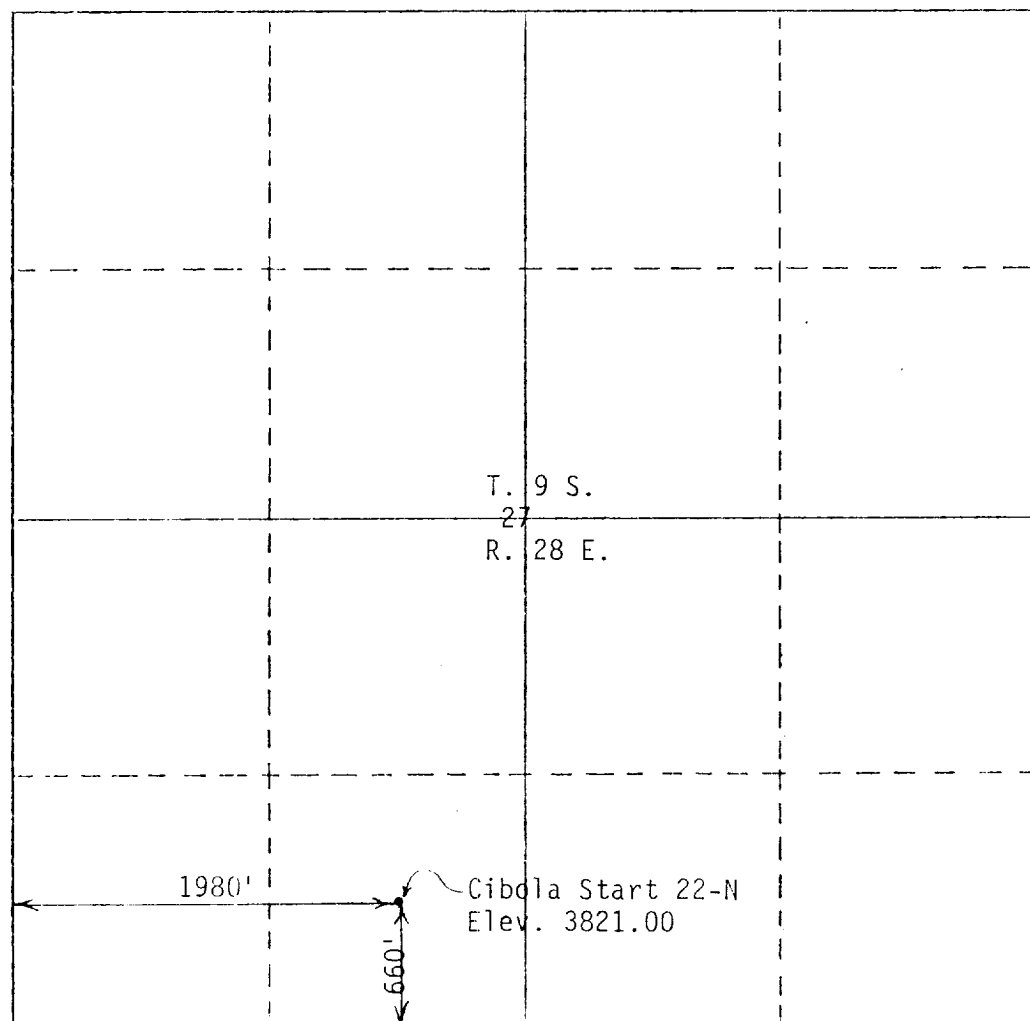
| | | | | | | | | |
|-------------------------------------|----------------------|----------------------------------|--|---|--|--------------------------------------|--|--|
| Operator Cibola Energy | | | Lease Cibola Start Test O. C. D. | | | Well No. Cibola Start 22-N | | |
| Unit Letter N | Section 27 | Township 9 South | Range 28 East | County ARTESIA, OFFICE Chaves | | | | |
| Actual Well Location of Well: | | | | | | | | |
| 1980 feet from the west | | line and 660 feet from the south | | line | | | | |
| Ground Level Elev. 3821.0 | | Forming Formation | | Foot | | Estimated Acreage | | |

1. Outline the acreage dedicated to the subject well by colored pencil or hatchure marks on the plat below.
2. If more than one lease is dedicated to the well, outline each and identify the ownership thereof (both as to working interest and royalty).
3. If more than one lease of different ownership is dedicated to the well, have the interests of all owners been consolidated by communitization, unitization, force-pooling, etc?

☐ Yes ☐ No If answer is "yes," type of consolidation _____

If answer is "no," list the owners and tract descriptions which have actually been consolidated. (Use reverse side of this form if necessary.) _____

No allowable will be assigned to the well until all interests have been consolidated (by communitization, unitization, forced-pooling, or otherwise) or until a non-standard unit, eliminating such interests, has been approved by the Commission.



CERTIFICATION

I hereby certify that the information contained herein is true and complete to the best of my knowledge and belief.

[Signature]
Name

R. B. Wright

Position

Agent

Company

Cibola Energy Corp.

Date

1/27/82

I hereby certify that the well location shown on this plat was plotted from field notes of actual surveys made by me or under my supervision, and that the same is true and correct to the best of my knowledge and belief.

1/27/82

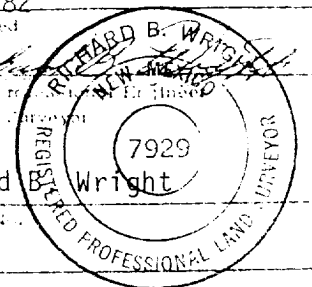
Date Surveyed

[Signature]
Registered Professional Land Surveyor
and/or Land Surveyor

Richard B. Wright

7929

7929



NEW MEXICO OIL CONSERVATION COMMISSION
WELL LOCATION AND ACREAGE DEDICATION PLAT

RECEIVED

Form C-11
Supersedes C-120
Effective 1-1-65

All distances must be from the outer boundaries of the Section

JAN 29 1982

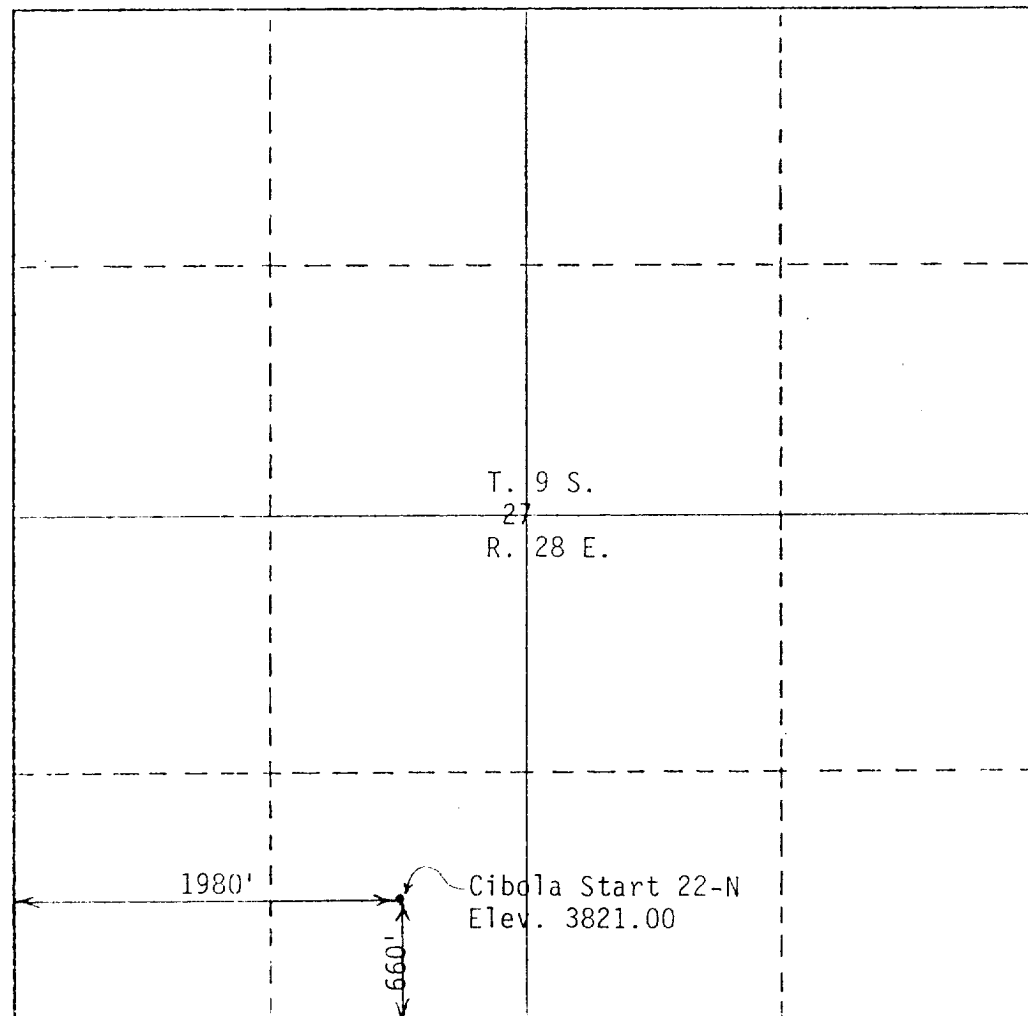
| | | | | | |
|-------------------------------------|----------------------|-----------------------------------|-------------------------|-----------------------------------|--|
| Operator Cibola Energy | | Lease Cibola Start Test | | Well No. Cibola Start-22-N | |
| Unit Letter N | Section 27 | Township 9 South | Range 28 East | County Chaves | |
| ARTESIA, OFFICE | | | | | |
| Actual Well Location of Well: | | | | | |
| 1980 feet from the west | | 660 feet from the south | | | |
| Ground Level Elev. 3821.0 | | Forming Formation | | Feet | |

1. Outline the acreage dedicated to the subject well by colored pencil or hachure marks on the plat below.
2. If more than one lease is dedicated to the well, outline each and identify the ownership thereof (both as to working interest and royalty).
3. If more than one lease of different ownership is dedicated to the well, have the interests of all owners been consolidated by communitization, unitization, force-pooling, etc?

☐ Yes ☐ No If answer is "yes," type of consolidation _____

If answer is "no," list the owners and tract descriptions which have actually been consolidated. (Use reverse side of this form if necessary.) _____

No allowable will be assigned to the well until all interests have been consolidated (by communitization, unitization, forced-pooling, or otherwise) or until a non-standard unit, eliminating such interests, has been approved by the Commission.



CERTIFICATION

I hereby certify that the information contained herein is true and complete to the best of my knowledge and belief.

Name

R. B. Wright

Position

Agent

Company

Cibola Energy Corp.

Date

1/27/82

I hereby certify that the well location shown on this plat was plotted from field notes of actual surveys made by me or under my supervision, and that the same is true and correct to the best of my knowledge and belief.

1/27/82

Date Surveyed

Registered Professional Land Surveyor

Richard Wright

7929

