

NO. OF COPIES RECEIVED	
DISTRIBUTION	
SANTA FE	1
FILE	1
U.S.G.S.	2
LAND OFFICE	1
OPERATOR	1

NEW MEXICO OIL CONSERVATION COMMISSION

RECEIVED

JUN 2 1980

O. C. D.

ARTESIA, OFFICE

30-005-60718

Form C-101  
Revised 1-1-75

5A. In locate Type of Locate  
STATE ☒ FEE ☐

5. State Oil & Gas Lease No.

L-4353

7. Unit A present lease

8. Name of Lessee Name

Hilltop NQ State

9. Well No.

2

10. Field, well field, or well

x Wildcat

11. County  
Chaves

approx. 5200

Penn

Rotary

12. Drilling Contractor  
Ia Rue Drilling

21. Approx. Date Work will start  
ASAP

PROPOSED CASING AND CEMENT PROGRAM

SIZE OF HOLE	SIZE OF CASING	WEIGHT PER FOOT	SETTING DEPTH	SACKS OF CEMENT	EST. TOP
12 1/2"	13 3/8"	48#	approx. 450'	350	circulate
12 1/2"	8 5/8"	24#	approx. 1600'	700	circulate
7 7/8"	4 1/2" or 5 1/2"	10.5 - 11.6# or 14 - 15.5#	TD 5200'		

We propose to drill and test the Penn and intermediate formations. Approximately 450' of surface casing will be set and cement circulated to shut off cavings. If commercial, 5 1/2" or 4 1/2" production casing will be run and cemented with adequate cover, perforate and stimulate as needed for production.

FW gel and LCM to 1650', FW to 3700', salt gel, flosal-driscopack KCL to TD.

ROP PROGRAM: ROP's will be installed on 8 5/8" casing and tested daily.

GAS NOT INDICATED.

APPROVAL VALID  
FOR 60 DAYS UNLESS  
DRILLING COMMENCED,

EXPIRES 9-3-80

IN ABOVE SPACE DESCRIBE PROPOSED PROGRAM; IF PROPOSAL IS TO DEEPEN OR PLUG BACK, GIVE DATA ON PRESENT PRODUCTIVE ZONE AND PROPOSED NEW PRODUCTIVE ZONE, GIVE ADEQUATE PREVENTER PROGRAM, IF ANY.

I hereby certify that the information above is true and complete to the best of my knowledge and belief.

Signed John A. Gressett Title Regulatory Coordinator Date June 2, 1980  
(This space for State Use)

SUPERVISOR, DISTRICT II

JUN 3 1980

APPROVED BY W. A. Gressett TITLE \_\_\_\_\_

CONDITIONS OF APPROVAL, IF ANY:

Cement must be circulated to surface behind 13 3/8" casing

Notify N.M.O.C.C. in sufficient time to witness cementing the 8 5/8" casing

**NEW MEXICO OIL CONSERVATION COMMISSION  
WELL LOCATION AND ACREAGE DEDICATION PLAT**

Form C-102  
Supersedes C-128  
Effective 1-1-65

All distances must be from the outer boundaries of the Section.

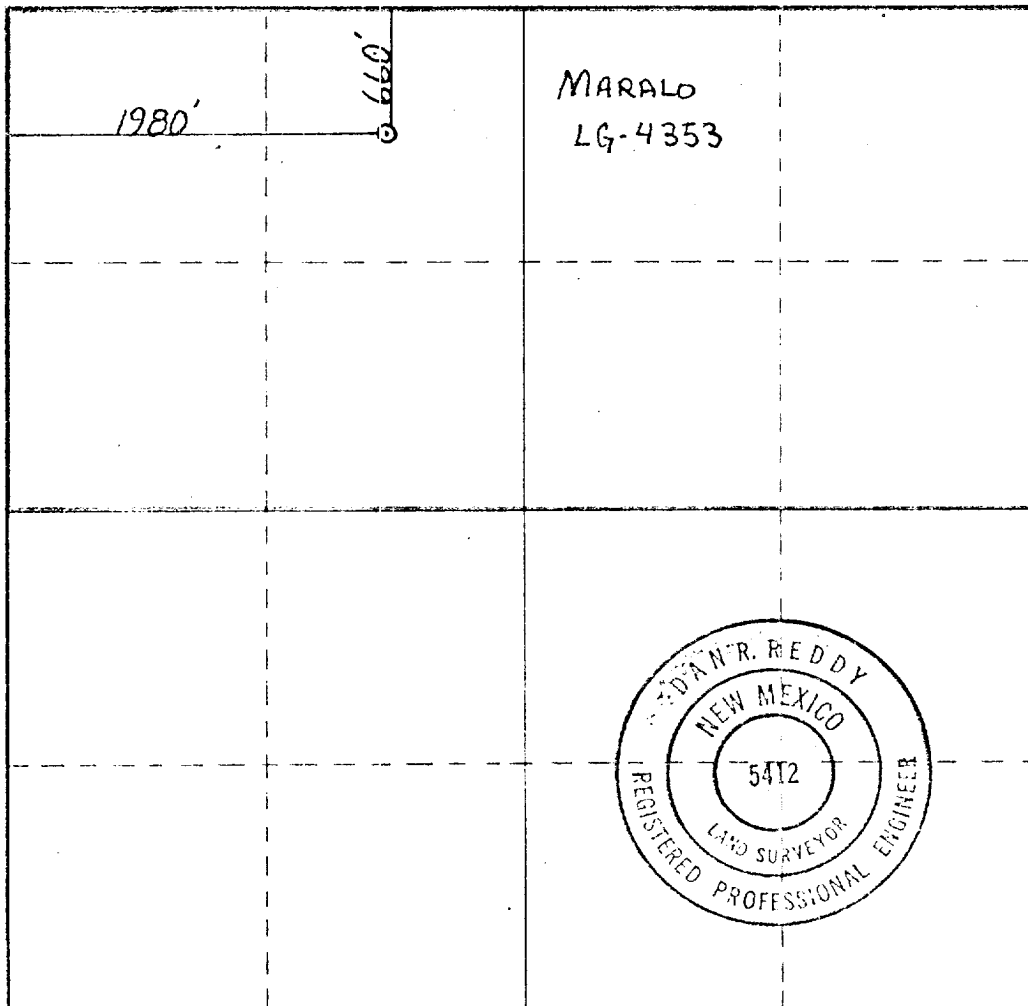
Operator <b>YATES PETROLEUM CORPORATION</b>			Lease <b>Hilltop NQ State</b>		Well No. <b>2</b>
Unit Letter <b>C</b>	Section <b>6</b>	Township <b>7 South</b>	Range <b>25 East</b>	County <b>Chaves</b>	
Actual Footage Location of Well:					
<b>660</b> feet from the <b>North</b> line and		<b>1980</b> feet from the <b>West</b> line			
Ground Level Elev. <b>3975.</b>	Producing Formation <b>PENN</b>	Pool <b>WILDCAT</b>		Dedicated Acreage: <b>32.0</b>	Acre:

1. Outline the acreage dedicated to the subject well by colored pencil or hachure marks on the plat below.
2. If more than one lease is dedicated to the well, outline each and identify the ownership thereof (both as to working interest and royalty).
3. If more than one lease of different ownership is dedicated to the well, have the interests of all owners been consolidated by communization, unitization, force-pooling, etc?

☐ Yes   ☐ No   If answer is "yes," type of consolidation \_\_\_\_\_

If answer is "no," list the owners and tract descriptions which have actually been consolidated. (Use reverse side of this form if necessary.) \_\_\_\_\_

No allowable will be assigned to the well until all interests have been consolidated (by communization, unitization, forced-pooling, or otherwise) or until a non-standard unit, eliminating such interests, has been approved by the Commission.



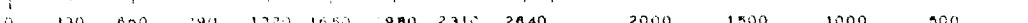
**CERTIFICATION**

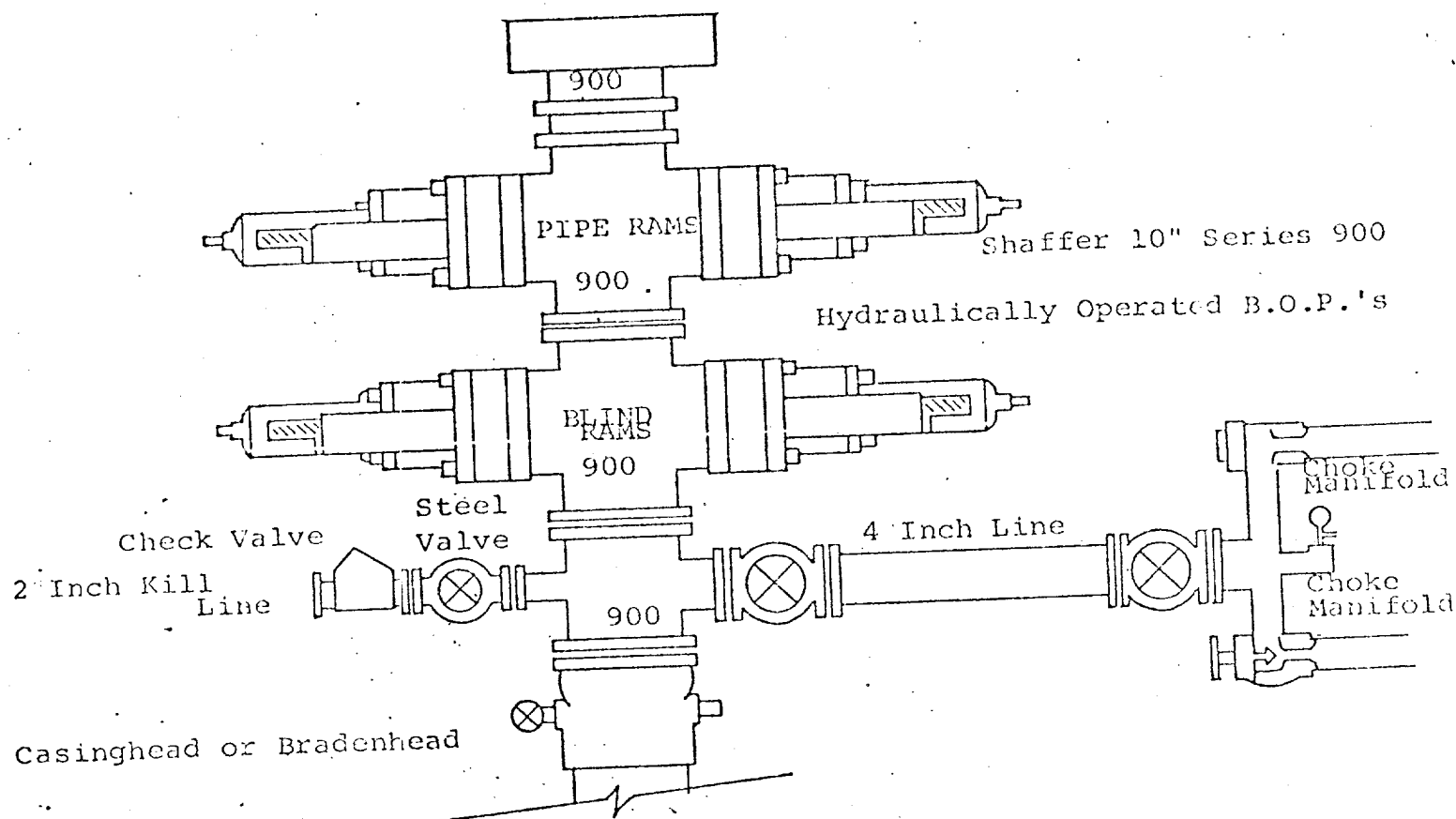
I hereby certify that the information contained herein is true and complete to the best of my knowledge and belief.

*Johnny A. Lopez*  
Name  
**JOHNNY A. LOPEZ**  
Position  
**REGULATORY COORDINATOR**  
Company  
**YATES PETROLEUM CORP.**  
Date

I hereby certify that the well location shown on this plat was plotted from field notes of actual surveys made by me or under my supervision, and that the same is true and correct to the best of my knowledge and belief.

Date Surveyed  
**May 27, 1980**  
Registered Professional Engineer and/or Land Surveyor  
*Dan R. Reddy*  
Certificate No.  
**NM PE&LS #5412**





THE FOLLOWING CONSTITUTE MINIMUM BLOWOUT PREVENTER REQUIREMENTS

1. All preventers to be hydraulically operated with secondary manual controls installed prior to drilling out from under casing.
2. Choke outlet to be a minimum of 4" diameter.
3. Kill line to be of all steel construction of 2" minimum diameter.
4. All connections from operating manifolds to preventers to be all steel. hole or tube a minimum of one inch in diameter.
5. The available closing pressure shall be at least 15% in excess of that required with sufficient volume to operate the B.O.P.'s.
6. All connections to and from preventer to have a pressure rating equivalent to that of the B.O.P.'s.
7. Inside blowout preventer to be available on rig floor.
8. Operating controls located a safe distance from the rig floor.
9. Hole must be kept filled on trips below intermediate casing. Operator not responsible for blowouts resulting from not keeping hole full.
10. D. P. float must be installed and used below zone of first gas intrusion.