

NO. OF COPIES RECEIVED	
DISTRIBUTION	
SANTA FE	1
FILE	1
U.S.G.S.	2
LAND OFFICE	1
OPERATOR	1

RECEIVED  
NEW MEXICO OIL CONSERVATION COMMISSION

JUN 24 1980

O. C. D.  
ARTESIA, OFFICE

30-005-60718

Form C-101  
Revised 1-1-65

amended location

APPLICATION FOR PERMIT TO DRILL, DEEPEN, OR PLUG BACK

1a. Type of Work  
 DRILL ☒ DEEPEN ☐ PLUG BACK ☐

b. Type of Well  
 OIL ☐ GAS ☒ OTHER ☐ SINGLE ZONE ☐ MULTIPLE ZONE ☐

2. Name of Operator  
 Yates Petroleum Corporation

3. Address of Operator  
 207 South 4, Artesia, NM 88210

4. Location of Well  
 UNIT LETTER N LOCATED 660 FEET FROM THE South LINE  
 AND 1980 FEET FROM THE West LINE OF SEC. 6 TWP. 7S RGE. 25E NMPM

5A. Indicate Type of Lease  
 STATE ☒ FEE ☐

5. State Oil & Gas Lease No.  
 LG-4353

7. Unit Agreement Name

8. Farm or Lease Name  
 Hilltop NQ State

9. Well No.  
 2

10. Field and Pool, or Wildcat  
 x Wildcat

12. County  
 Chaves

16. Proposed Depth  
 approx. 5300

19A. Formation  
 Penn

20. Rotary or C.T.  
 Rotary

21. Elevations (Show whether DE, RT, etc.)  
 4031 GL

21A. Kind & Status Plug. Bond  
 Blanket

21B. Drilling Contractor  
 La Rue Drilling

22. Approx. Date Work will start  
 ASAP

PROPOSED CASING AND CEMENT PROGRAM

SIZE OF HOLE	SIZE OF CASING	WEIGHT PER FOOT	SETTING DEPTH	SACKS OF CEMENT	EST. TOP
17 1/2"	13 3/8"	48#	approx. 450'	350 sx	circulate
12 1/4"	8 5/8"	24#	approx. 1300'	700 sx	circulate
7 7/8"	4 1/2 or 5 1/2"	10.5 - 11.6# or 14 - 15.5#	TD 5300'	300 sx	

We propose to drill and test the Penn and intermediate formations. Approximately 450' of surface casing will be set and cement circulated to shut off cavings. If commercial, 5 1/2 or 4 1/2" production casing will be run and cemented with adequate cover, perforate and stimulate as needed for production.

MUD PROGRAM: FW get and LCM to 1300', FW to 3700', salt get, flosal-driskak KCL to TD.

BOP PROGRAM: BOP's will be installed on 8 5/8" casing and tested daily.

GAS NOT DEDICATED.

APPROVAL VALID  
FOR 90 DAYS UNLESS  
DRILLING COMMENCED,

EXPIRES 9-24-80

IN ABOVE SPACE DESCRIBE PROPOSED PROGRAM: IF PROPOSAL IS TO DEEPEN OR PLUG BACK, GIVE DATA ON PRESENT PRODUCTIVE ZONE AND PROPOSED NEW PRODUCTIVE ZONE. GIVE BLOWOUT PREVENTER PROGRAM, IF ANY.

I hereby certify that the information above is true and complete to the best of my knowledge and belief.

Signed John A. Lopez Title Regulatory Coordinator Date June 23, 1980

APPROVED BY W.A. Gussitt TITLE SUPERVISOR, DISTRICT II DATE JUN 24 1980

CONDITIONS OF APPROVAL, IF ANY:

Cement must be circulated to  
surface behind 13 3/8" casing

8 5/8"

NE MEXICO OIL CONSERVATION COMMISSION  
WELL LOCATION AND ACREAGE DEDICATION PLAT

Form C-102  
Supersedes C-128  
Effective 1-1-65

All distances must be from the outer boundaries of the Section.

Operator <b>Yates Petroleum Corporation</b>		Lease <b>Hilltop NQ</b>		State <b>State</b>		Well No. <b>2</b>
Unit Letter <b>N</b>	Section <b>6</b>	Township <b>7 South</b>	Range <b>25 East</b>	County <b>Chaves</b>		

Actual Footage Location of Well:  
**660** feet from the **South** line and **1980** feet from the **West** line

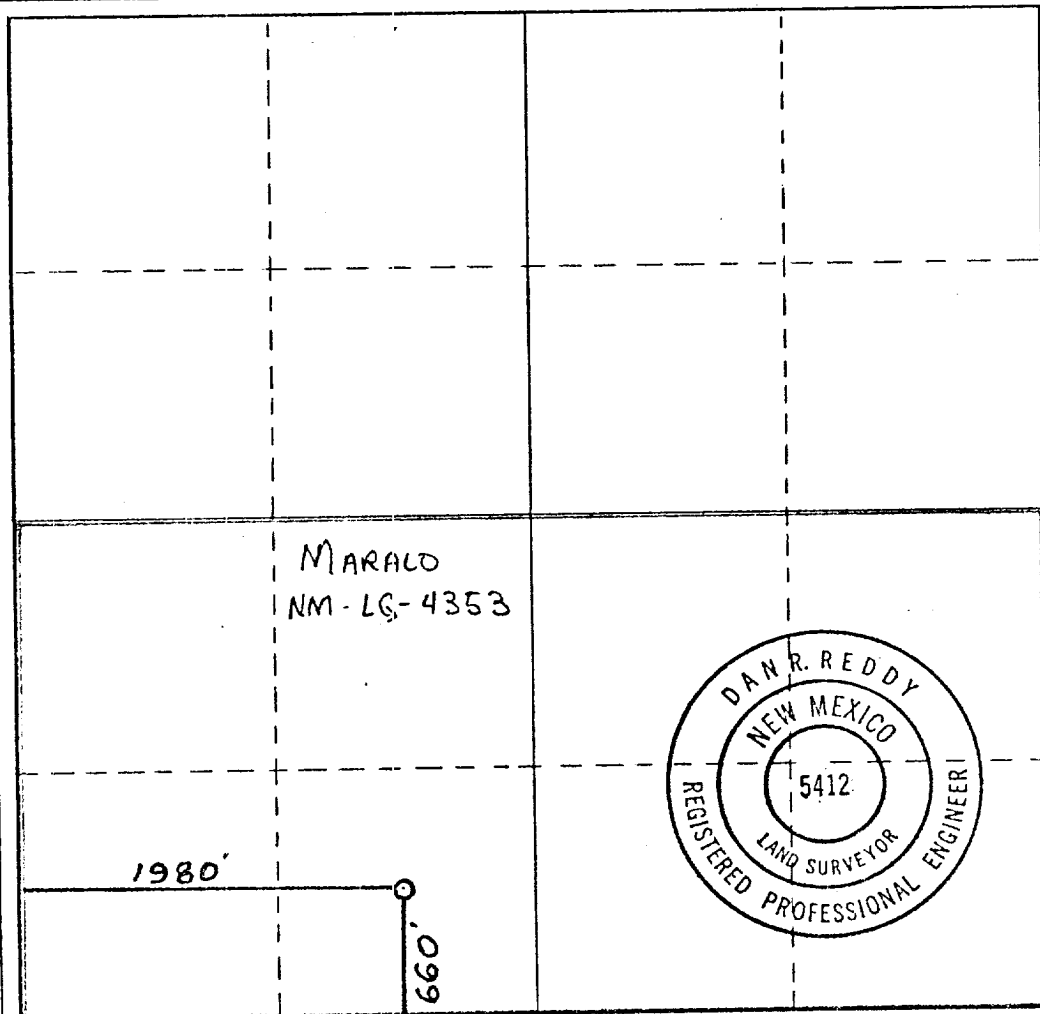
Ground Level Elev. <b>4031</b>	Producing Formation <b>PENN</b>	Pool <b>WILDCAT</b>	Dedicated Acreage: <b>320</b> Acres
-----------------------------------	------------------------------------	------------------------	--

1. Outline the acreage dedicated to the subject well by colored pencil or hatchure marks on the plat below.
2. If more than one lease is dedicated to the well, outline each and identify the ownership thereof (both as to working interest and royalty).
3. If more than one lease of different ownership is dedicated to the well, have the interests of all owners been consolidated by communitization, unitization, force-pooling, etc?

☐ Yes ☒ No If answer is "yes," type of consolidation \_\_\_\_\_

If answer is "no," list the owners and tract descriptions which have actually been consolidated. (Use reverse side of this form if necessary.) \_\_\_\_\_

No allowable will be assigned to the well until all interests have been consolidated (by communitization, unitization, forced-pooling, or otherwise) or until a non-standard unit, eliminating such interests, has been approved by the Commission.



CERTIFICATION

I hereby certify that the information contained herein is true and complete to the best of my knowledge and belief.

*Johnny A. Lopez*  
Name

**JOHNNY A. LOPEZ**  
Position

**REGULATORY COORDINATOR**  
Company

**YATES Petroleum Corporation**  
Date

**6-24-80**

I hereby certify that the well location shown on this plat was plotted from field notes of actual surveys made by me or under my supervision, and that the same is true and correct to the best of my knowledge and belief.

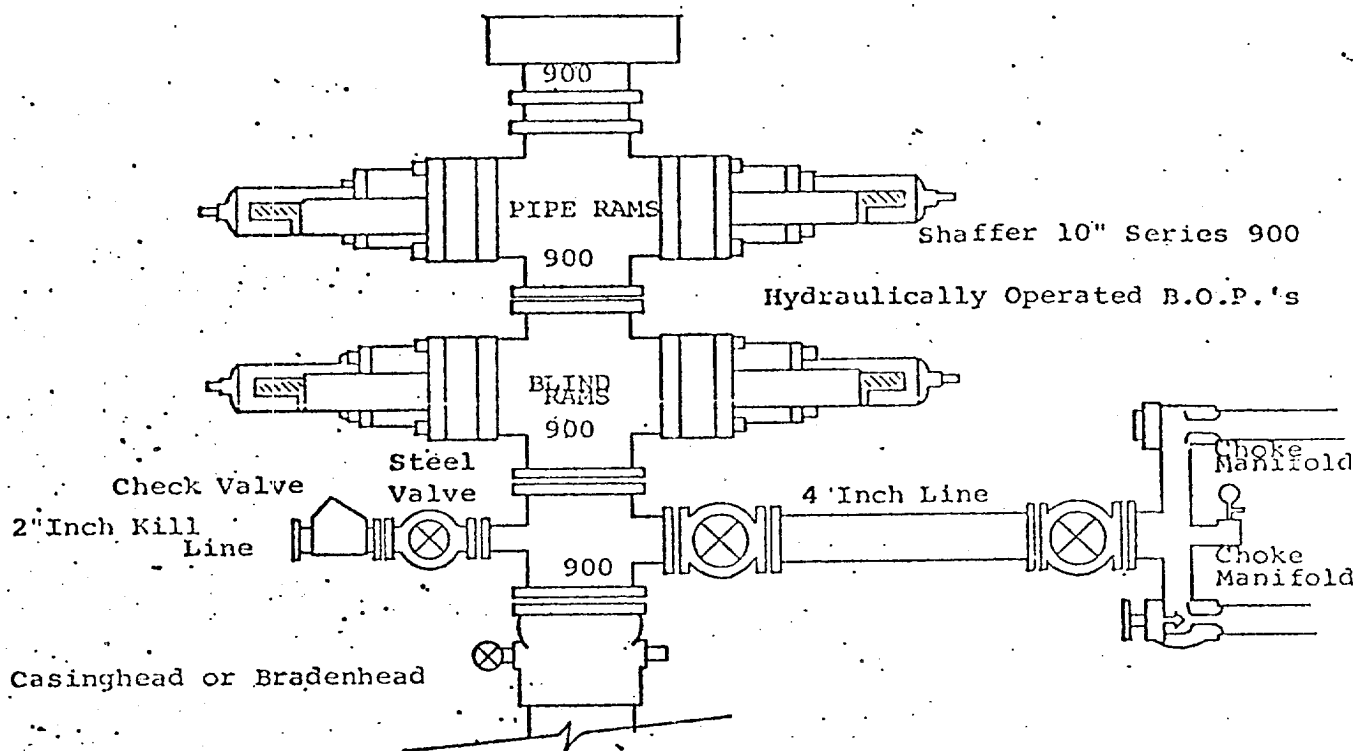
Date Surveyed  
**6/15/80**

Registered Professional Engineer and/or Land Surveyor

*Dan R. Reddy*  
Certificate No.

**NMPE&LS #5412**

0 330 660 990 1320 1650 1980 2310 2640 2000 1500 1000 500 0



THE FOLLOWING CONSTITUTE MINIMUM BLOWOUT PREVENTER REQUIREMENTS

1. All preventers to be hydraulically operated with secondary manual controls installed prior to drilling out from under casing.
2. Choke outlet to be a minimum of 4" diameter.
3. Kill line to be of all steel construction of 2" minimum diameter.
4. All connections from operating manifolds to preventers to be all steel. hole or tube a minimum of one inch in diameter.
5. The available closing pressure shall be at least 15% in excess of that required with sufficient volume to operate the B.O.P.'s.
6. All connections to and from preventer to have a pressure rating equivalent to that of the B.O.P.'s.
7. Inside blowout preventer to be available on rig floor.
8. Operating controls located a safe distance from the rig floor.
9. Hole must be kept filled on trips below intermediate casing. Operator not responsible for blowouts resulting from not keeping hole full.
10. D. P. float must be installed and used below zone of first gas intrusion.