

COPIES RECEIVED	
DISTRIBUTION	
SANTA FE	1
FILE	1
U.S.G.S.	2
LAND OFFICE	
OPERATOR	1

NEW MEXICO OIL CONSERVATION COMMISSION

RECEIVED

DEC - 1 1981

O. C. D.

ARTESIA OFFICE

30-005-61252
Form O-101
Revised 1-1-81

5A. Indicate Type of Lease
STATE <input type="checkbox"/> FEE <input checked="" type="checkbox"/>
5. Casing & Cement Lease

APPLICATION FOR PERMIT TO DRILL, DEEPEN, OR PLUG BACK

1a. Type of Work		7. Unit Agreement Name	
b. Type of Well DRILL <input checked="" type="checkbox"/> DEEPEN <input type="checkbox"/> PLUG BACK <input type="checkbox"/>		8. Farm or Lease Name	
c. Name of Operator Cibola Energy Corporation		9. Well No. 5	
3. Address of Operator P.O. Box 1668, Albuquerque, New Mexico 87103		10. Field and Pool, or Wellhead Race Track SA	
4. Location of Well UNIT LETTER J LOCATED 1980 FEET FROM THE South LINE AND 1980 FEET FROM THE East LINE OF SEC. 18 TWP. 10S RGE. 28E NMDP		12. County Chaves	
19. Proposed Depth 2250		19A. Formation San Andres	
20. Battery or C.T. Cable Tool		21. Elevations (show whether DT, HT, etc.) 3766.4	
21A. Kind & Status Plug. Bond Statewide		21B. Drilling Contractor Comanche Drilling	
22. Approx. Date Work will start December 15, 1981			

23.

PROPOSED CASING AND CEMENT PROGRAM

SIZE OF HOLE	SIZE OF CASING	WEIGHT PER FOOT	SETTING DEPTH	SACKS OF CEMENT	EST. TOP
10"	8 5/8"	20#	400'	85	Circ.
8"	7"	20#	2250'	150	2000

We propose to:

Drill a 10" hole and set 8 5/8" casing to 350'. Circulate cement to surface, WOC 18 hours. Test hole for fluid entry. If bailed dry, will commence drilling an 8" hole to 2250'. Run DLL with Mirrolaterolog, CNL-FDC-GR. We will set 7" casing to either TD or above P-1 zone depending on the outcome of the logs. In latter case, open hole completion will be attempted, in former case, casing will be perforated.

APPROVAL VALID FOR 180 DAYS
PERMIT EXPIRES 6-3-82
UNLESS DRILLING UNDERWAY

Posted ID-1
API + NL Book
12-4-81

IN ABOVE SPACE DESCRIBE PROPOSED PROGRAM: IF PROPOSAL IS TO DEEPEN OR PLUG BACK, GIVE DATA ON PRESENT PRODUCTIVE ZONE AND PROPOSED NEW PRODUCTIVE ZONE. GIVE BLOWOUT PREVENTER PROGRAM, IF ANY.

I hereby certify that the information above is true and complete to the best of my knowledge and belief.

Signed Arleta Vigil Title Drilling Secretary Date 11-18-81

(This space for State Use)

APPROVED BY Mike Williams TITLE OIL AND GAS INSPECTOR DATE DEC 3 1981

CONDITIONS OF APPROVAL, IF ANY:

Cement must be circulated to
surface behind 8 5/8" casing

NEW MEXICO OIL CONSERVATION COMMISSION
WELL LOCATION AND ACREAGE DEDICATION PLAT

Form C-102
Supersedes C-128
Effective 1-1-65

All distances must be from the outer boundaries of the Section

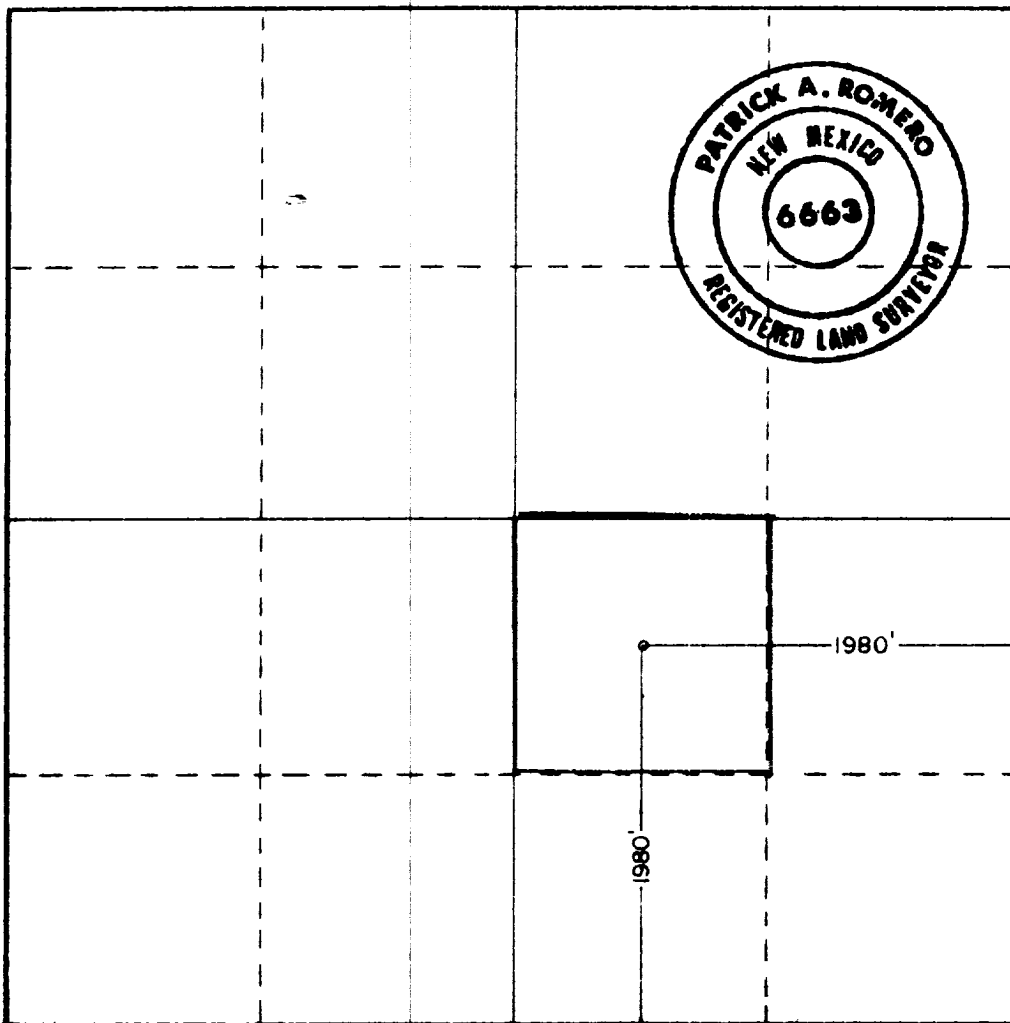
Operator CIBOLA ENERGY CORP.			Lease J.P. WHITE		Well No. 5
Unit Letter J	Section 18	Township 10 SOUTH	Range 28 EAST	County CHAVES	
Actual Footage Location of Well: 1980 feet from the SOUTH line and 1980 feet from the EAST line					
Ground Level Elev. 3766.4	Producing Formation San Andres		Pool <i>Unit</i> Race Track SA		Dedicated Acreage: 40 Acres

1. Outline the acreage dedicated to the subject well by colored pencil or hatchure marks on the plat below.
2. If more than one lease is dedicated to the well, outline each and identify the ownership thereof (both as to working interest and royalty).
3. If more than one lease of different ownership is dedicated to the well, have the interests of all owners been consolidated by communitization, unitization, force-pooling, etc?

☐ Yes ☒ No If answer is "yes," type of consolidation _____

If answer is "no," list the owners and tract descriptions which have actually been consolidated. (Use reverse side of this form if necessary.) All leases are held by operator and participating parties

No allowable will be assigned to the well until all interests have been consolidated (by communitization, unitization, forced-pooling, or otherwise) or until a non-standard unit, eliminating such interests, has been approved by the Commission.



CERTIFICATION

I hereby certify that the information contained herein is true and complete to the best of my knowledge and belief.

Anita Vigil
Name

Anita Vigil

Position

Drilling Secretary

Company

Cibola Energy Corporation

Date

11-18-81

I hereby certify that the well location shown on this plat was plotted from field notes of actual surveys made by me or under my supervision, and that the same is true and correct to the best of my knowledge and belief.

Date Surveyed

11-10-81

Registered Professional Engineer and/or Land Surveyor

Patrick A. Romero
Certificate No. **JOHN W. GUST 676**
PATRICK A. ROMERO 6663
Ronald J. Eideen 3239