

30-005-61256

NEW MEXICO OIL CONSERVATION COMMISSION RECEIVED

Form C-101
Revised 1-1-85

DEC - 1 1981

O. C. D.
ARTESIA, OFFICE

5A. Initial Type of Lease
STATE ☐ FEE ☒
5. State Oil & Gas Lease No.

APPLICATION FOR PERMIT TO DRILL, DEEPEN, OR PLUG BACK

1a. Type of Work
b. Type of Well DRILL ☒ DEEPEN ☐ PLUG BACK ☐
c. Type of Well OIL WELL ☒ GAS WELL ☐ OTHER ☐ SINGLE ZONE ☐ MULTIPLE ZONE ☐
2. Name of Operator
Cibola Energy Corporation ✓
3. Address of Operator
P.O. Box 1668, Albuquerque, New Mexico 87103
4. Location of Well UNIT LETTER L LOCATED 330 FEET FROM THE West LINE
AND 1650 FEET FROM THE South LINE OF SEC. 20 TWP. 10S RGE. 28E NMPM
10. Field and Pool, or Unit
Race Track SA
12. County
Chaves
13. Proposed Depth
2250
13A. Formation
San Andres
13B. Rotary or C.T.
CT
21. Elevations (Show whether DF, RI, etc.)
3769.2
21A. Kind & Status Plug. Bond
Statewide
21B. Drilling Contractor
Comanche Drilling
22. Approx. Date Work will start
December 14, 1981

23. PROPOSED CASING AND CEMENT PROGRAM

SIZE OF HOLE	SIZE OF CASING	WEIGHT PER FOOT	SETTING DEPTH	SACKS OF CEMENT	EST. TOP
10"	8 5/8"	20#	400	85	Circ.
8"	7"	20#	2250'	150	2000

We propose to:

Drill a 10" hole and set 8 5/8" casing to 350'. Circulate cement to surface, WOC 18 hours. Test hole for fluid entry. If bailed dry, will commence drilling an 8" hole to 2250'. Run DLL with Mirroloaterolog, CNL-FDC-GR. We will set 7" casing to either TD or above P-1 zone depending on the outcome of the logs. In latter case, open hole completion will be attempted, in former case, casing will be perforated.

Posted 12-1
API + N.E. Bond
12-4-81

APPROVAL VALID FOR 180 DAYS
PERMIT EXPIRES 6-3-82
UNLESS DRILLING UNDERWAY

IN ABOVE SPACE DESCRIBE PROPOSED PROGRAM: IF PROPOSAL IS TO DEEPEN OR PLUG BACK, GIVE DATA ON PRESENT PRODUCTIVE ZONE AND PROPOSED NEW PRODUCTIVE ZONE. GIVE BLOWOUT PREVENTER PROGRAM, IF ANY.

I hereby certify that the information above is true and complete to the best of my knowledge and belief.

Signed Paula Vigil Title Drilling Secretary Date 11-18-81

(This space for State Use)

APPROVED BY Mike Williams TITLE OIL AND GAS INSPECTOR DATE DEC 3 1981

CONDITIONS OF APPROVAL, IF ANY:

Cement must be circulated to

256

NEW MEXICO OIL CONSERVATION COMMISSION
WELL LOCATION AND ACREAGE DEDICATION PLAT

Form C-102
Supersedes C-128
Effective 1-1-65

All distances must be from the outer boundaries of the Section

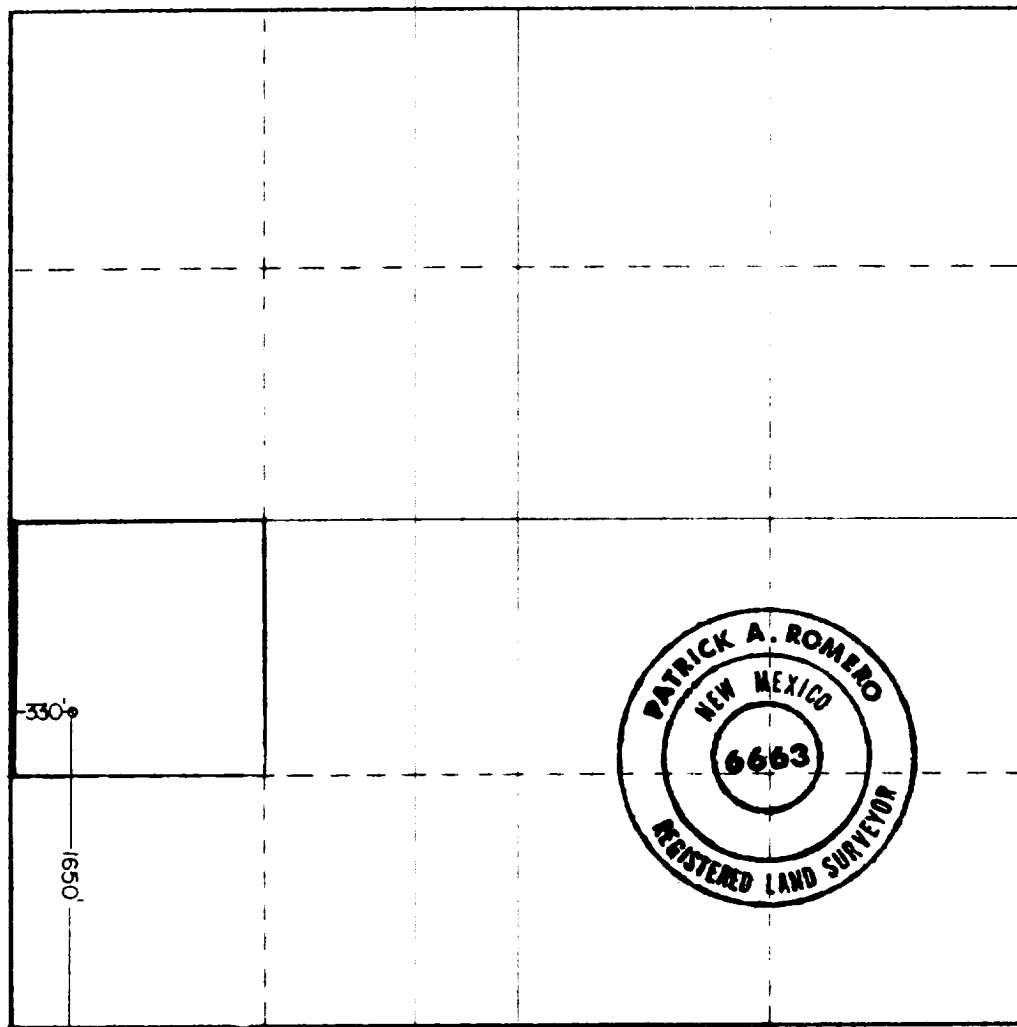
Operator CIBOLA ENERGY CORP.		Lease J.P. WHITE "D"		Well No. 6
Tract Letter L	Section 20	Township 10 SOUTH	Range 28 EAST	County CHAVES
Actual Portage Location of Well: 330 feet from the WEST line and 1650 feet from the SOUTH line				
Ground Level Elev. 3769.2	Producing Formation San Andres	Pool Land, Race Track SA	Dedicated Acreage 40 Acres	

1. Outline the acreage dedicated to the subject well by colored pencil or hatchure marks on the plat below.
2. If more than one lease is dedicated to the well, outline each and identify the ownership thereof (both as to working interest and royalty).
3. If more than one lease of different ownership is dedicated to the well, have the interests of all owners been consolidated by communitization, unitization, force-pooling, etc?

☐ Yes ☒ No If answer is "yes," type of consolidation _____

If answer is "no," list the owners and tract descriptions which have actually been consolidated. (Use reverse side of this form if necessary.) All leases are held by operator and participating parties

No allowable will be assigned to the well until all interests have been consolidated (by communitization, unitization, forced-pooling, or otherwise) or until a non-standard unit, eliminating such interests, has been approved by the Commission.



CERTIFICATION

I hereby certify that the information contained herein is true and complete to the best of my knowledge and belief

Anita Vigil
Name

Anita Vigil

Position

Drilling Secretary

Company

Cibola Energy Corp.

Date

11-18-81

I hereby certify that the well location shown on this plat was plotted from field notes of actual surveys made by me or under my supervision, and that the same is true and correct to the best of my knowledge and belief.

Date Surveyed

11-11-81

Registered Professional Engineer and/or Land Surveyor

Patrick A. Romero

Certificate No. **JOHN W. WEST 676**
PATRICK A. ROMERO 6663
Ronald J. Eideon 3239