

UNITED STATES  
DEPARTMENT OF THE INTERIOR  
GEOLOGICAL SURVEY

30-005-61323

## APPLICATION FOR PERMIT TO DRILL, DEEPEN, OR PLUG BACK

## 1A. TYPE OF WORK

DRILL ☒DEEPEN ☐PLUG BACK ☐

## B. TYPE OF WELL

OIL  
WELL ☒GAS  
WELL ☐OTHER ☐SINGLE  
ZONE ☐MULTIPLE  
ZONE ☐

## 2. NAME OF OPERATOR

Fi-Ro Corporation

RECEIVED

## 3. ADDRESS OF OPERATOR

P. O. Box 315, Natchez, MS 39120

JAN 4 1982

## 4. LOCATION OF WELL (Report location clearly and in accordance with any State requirements.)

330 FNL & 990 FEL A-24 - T118 - R27E  
At proposed prod. zoneO. C. D.  
ARTESIA, OFFICE

## 14. DISTANCE IN MILES AND DIRECTION FROM NEAREST TOWN OR POST OFFICE\*

Same  
Approximately 24 miles East of Roswell, NM

## 10. DISTANCE FROM PROPOSED\*

LOCATION TO NEAREST  
PROPERTY OR LEASE LINE, FT.  
(Also to nearest drlg. unit line, if any)

330'

## 16. NO. OF ACRES IN LEASE

1040

18. DISTANCE FROM PROPOSED LOCATION\*  
TO NEAREST WELL, DRILLING COMPLETED,  
OR APPLIED FOR, ON THIS LEASE, FT.

2000'

## 19. PROPOSED DEPTH

2450'

17. NO. OF ACRES ASSIGNED  
TO THIS WELL

40

## 20. ROTARY OR CABLE TOOLS

cable tools

## 21. ELEVATIONS (Show whether DF, RT, GR, etc.)

3746' GR

## 22. APPROX. DATE WORK WILL START\*

January 1, 1982

## 23.

## PROPOSED CASING AND CEMENTING PROGRAM

SIZE OF HOLE	SIZE OF CASING	WEIGHT PER FOOT	SETTING DEPTH	QUANTITY OF CEMENT
10" 1/2"	8 5/8"	24	460'	100 sks. with 28 CAC/CIRCULA
8"	5 1/2"	15.5	2450'	175 sks.

We plan to drill to 2450' with cable tools to test the Queen at approximately 980', and the San Andres from approximately 1400' to 2450'. A ten-inch hole will be drilled to about 450' and 8 5/8" will be set and 100 sacks cement circulated to surface for water shut off. After 24 hours, bail hole dry to test for water shut off. Then drill out with 8" to 2450' to test the Queen and the San Andres. If sufficient oil is encountered, 5 1/2" casing will be set at 2450' and cemented with 175 sacks and completion attempted. An eight-inch control valve will be used while drilling from 450' to 2450'. We will dig a 8' X 40' X 6' deep pit to allow back filling. No road constructing material will be used. For well test, water will be purchased from nearest commercial source.

RECEIVED  
DEC 28 1981Posted ID  
API + NL &  
1-8-

IN ABOVE SPACE DESCRIBE PROPOSED PROGRAM: If proposal is to deepen or plug back, give data on present productive zone and proposed new productive zone. If proposal is to drill or deepen directionally, give pertinent data on subsurface locations and measured and true vertical depths. Give blowout preventer program, if any.

## 24.

SIGNED

Guy M. Hall

TITLE

President

DATE

12-28-81

(This space for Federal or State office use)

PERMIT NO.

APPROVED

APPROVAL DATE

APPROVED BY

(O.S. 53-4) ROGER A. CHAPMAN

TITLE

DATE

CONDITIONS OF APPROVAL

DEC 31 1981

JAMES A. GILLHAM  
DISTRICT SUPERVISOR

\*See Instructions On Reverse Side

12-30-81

# WELL LOCATION AND ACREAGE CERTIFICATE

All distances must be in feet or meters.

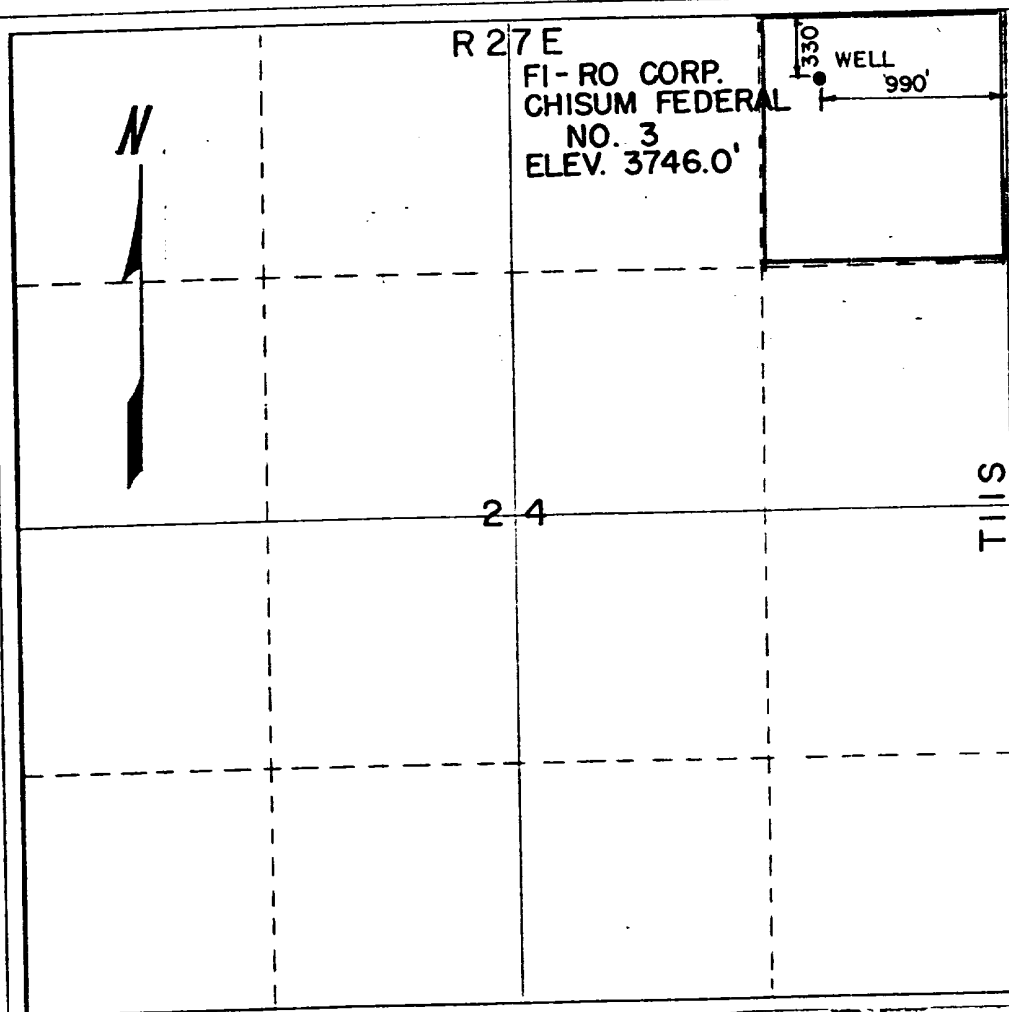
<i>Fi-ro Corp.</i>		<i>Chisum Federal</i>		3
Section <b>A</b>	Township <b>24</b>	Range <b>11-S</b>	Meridian <b>27-E</b>	County <b>Chaves</b>
Actual Surface Location of Well				
<b>330</b>	feet from the <b>NORTH</b>	line and	<b>990</b>	feet from the <b>EAST</b>
Ground Level Elev. <b>3746.0'</b>	Forming Formation <b>SAN ANDRES</b>	Pool <b>Chisum San ANDRES</b>	Drainage Acreage <b>40</b>	

1. Outline the acreage dedicated to the subject well by colored pencil or hatchure marks on the plat below.
2. If more than one lease is dedicated to the well, outline each and identify the ownership thereof as to working interest and royalty.
3. If more than one lease of different ownership is dedicated to the well, have the interests of all owners been consolidated by communitization, unitization, force-pooling, etc?

☐ Yes ☐ No If answer is "yes," type of consolidation \_\_\_\_\_

If answer is "no," list the owners and tract descriptions which have actually been consolidated. (Use reverse side of this form if necessary.) \_\_\_\_\_

No allowable will be assigned to the well until all interests have been consolidated (by communitization, unitization, forced-pooling, or otherwise) or until a non-standard unit, eliminating such interests, has been approved by the Commission.



## CERTIFICATION

I hereby certify that the information contained herein is true and complete to the best of my knowledge and belief.

*Jimmy Mabel*  
Name  
President

Position  
*FIRO corporation*

Company  
*12-28-81*

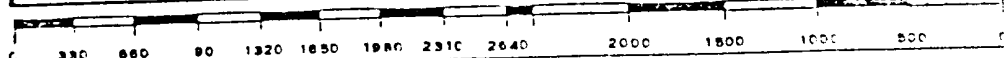
Date

I hereby certify that the well location shown on this plat was plotted from field notes of actual surveys made by me or under my supervision, and that the same is true and correct to the best of my knowledge and belief.

November 30, 1981

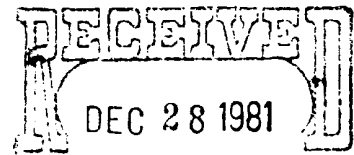
Signature  
*Thomas T. Mann*

Professional Engineer  
and Oil and Gas Surveyor  
**Thomas T. Mann, P.E.&L.**  
N.M. License No. 277



# Fi-Ro Corporation

P. O. Box 315  
Natchez, Mississippi 39120  
Phone 601-442-0281 - 446-7122



SURFACE USE  
CHISUM FEDERAL NO. 3  
CHAVES COUNTY, N.M.  
Sec. 24 27E 11S

OIL & GAS  
U.S. GEOLOGICAL SURVEY  
ROSWELL, NEW MEXICO


1. Existing Roads. The county maintained road bearing South from Highway 380 at about mile marker 172 going South through the center of Section 29 & 32 10S to the NW corner of Section 11-11S-27E then East to the NE corner of Section 12, then South and finally to Fi-Ro Chisum Federal No. 1.
2. New road will be required from No. 1 road East for 1794' to location.
3. No. 3 proposed location is 2000' East of the Fi-Ro Corporation No. 1 Chisum Federal and 1750' NE of the windmill in Section 24 (See Plat Exhibit A).
4. The location will be 200' X 200' with the well in the NE portion leaving room for a tank battery in the SW portion. See Exhibit B.
5. Water will be purchased from the nearest commercial source and trucked to location by local contractors.
6. No construction material will be used for the road during drilling operation.
7. Drilling mud will be contained in a pit large enough to be buried when job is completed.
8. No ancillary facilities.
9. See Exhibit B. No cuts or fills will be required.
10. No reshaping will be required since no cuts or fills will be done. Only removal of mesquite scrub on location and road.
11. Soil is generally sandy or sandy clay.

12. Operator is Fi-Ro Corporation  
P. O. Box 315  
Natchez, MS 39120  
Phone: (601) 446-7122

REP: Tommy McDonald  
P. O. Box 577  
Natchez, MS 39120  
Phone: (601) 442-0481  
Ruidoso Phone: (505) 257-7150

I hereby certify that I or persons under my direct supervision have inspected the proposed drill site and access route, that I am familiar with conditions that presently exist, that the statements made in this plan are to the best of my knowledge, true and correct and that the work associated with the operation and its contractors and sub-contractors is in conformity with the plan and the terms and conditions under which it is approved.

12-10-81

  
Tommy McDonald, President

Operated By:  
TOMMY McDONALD

"All Types Steel Fabrication"

Bus. 445-9911  
Res. 442-0281

# Fi-Ro Corporation

*Machine & Welding Works*

P. O. BOX 315

NATCHEZ, MISSISSIPPI 39120

PROPOSED LOC. 200 X 200 FT.

PIT 8 X 40 X 6FT. DEEP

FIRO CORPORATION CHISUM FEDERAL NO. 3 ----- O

PROPOSED ROAD FROM FIRO CORPORATION CHISUM FEDERAL NO. 1

## Fi-Ro Corporation

Machine & Welding Works

P. O. BOX 315

NATCHEZ, MISSISSIPPI 39120

March 26, 1979

Slash G Cattle Company  
P O Box 877  
Roswell, N M 88201

Elmer and Jane Garnsey

Re: Chaves Co, New Mexico  
T 11 S R 27 E  
Sec. 24, 23, 25, 26, 27  
E and W

11.8.79  
YMC

As per our telephone conversation regarding location and road cost, it is my understanding that you wish us to use all existing roads and to make the smallest amount of new road possible. The route will be agreed upon by both yourselves and Tommy McDonald.

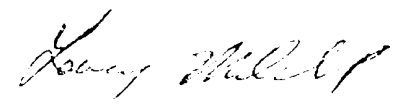
The price for each location is \$500.00 and \$300.00 per mile of new road used. We also assure you that the locations and roads will be kept clean of trash and pits will be fenced to keep cattle out.

If this meets with your approval, please sign and return 1 copy to Fi-Ro Corporation, Natchez, Miss.

Slash G Cattle Company

  
Elmer Garnsey

Fi-Ro Corporation

  
Tommy McDonald, Pres.

UNITED STATES  
DEPARTMENT OF THE INTERIOR  
GEOLOGICAL SURVEY

UNITED STATES  
DEPARTMENT OF THE ARMY  
CORPS OF ENGINEERS

