

NM 011
Drawer DD
Artes

NM 88210

SUBMIT IN TRIPLICATE*
(Other in: Jones on
reverse side)Form approved.
Budget Bureau No. 42-R1425.

C/SF

UNITED STATES
DEPARTMENT OF THE INTERIOR

GEOLOGICAL SURVEY

(AMENDED)

30-005-61346

5. LEASE DESIGNATION AND SERIAL NO.

NM-29416

6. IF INDIAN, ALLOTTEE OR TRIBE NAME

7. UNIT AGREEMENT NAME

8. FARM OR LEASE NAME

MILNER FEDERAL

9. WELL NO.

4

10. FIELD AND POOL, OR WILDCAT

X UNDESIGNATED ABO

11. SEC., T., R., M., OR BLK.
AND SURVEY OR AREA

SEC 8, T8S, R25E

12. COUNTY OR PARISH 13. STATE

CHAVES

NEW MEXICO

APPLICATION FOR PERMIT TO DRILL, DEEPEN, OR PLUG BACK

1a. TYPE OF WORK

DRILL ☒DEEPEN ☐PLUG BACK ☐

b. TYPE OF WELL

OIL
WELL ☐GAS
WELL ☒

OTHER

SINGLE
ZONE ☒MULTIPLE
ZONE ☐

2. NAME OF OPERATOR

MESA PETROLEUM CO.

3. ADDRESS OF OPERATOR

1000 VAUGHN BUILDING/MIDLAND, TEXAS 79701-4493

4. LOCATION OF WELL (Report location clearly and in accordance with any State requirements.)

At surface

990' FSL & 1780' FWL SE SW/4

At proposed prod. zone

same

14. DISTANCE IN MILES AND DIRECTION FROM NEAREST TOWN OR POST OFFICE*

RECEIVED

APR 14 1982

O. C. D. ut-N

ARTESIA, OFFICE

20 miles north/northeast of Roswell, New Mexico

15. DISTANCE FROM PROPOSED*

LOCATION TO NEAREST

PROPERTY OR LEASE LINE, FT.

(Also to nearest drlg. unit line, if any)

990'

16. NO. OF ACRES IN LEASE

640'

17. NO. OF ACRES ASSIGNED
TO THIS WELL

160

18. DISTANCE FROM PROPOSED LOCATION*

TO NEAREST WELL, DRILLING, COMPLETED,
OR APPLIED FOR, ON THIS LEASE, FT.

1320'

19. PROPOSED DEPTH

4000'

20. ROTARY OR CABLE TOOLS

Rotary

21. ELEVATIONS (Show whether DF, RT, GR, etc.)

3625' GR

22. APPROX. DATE WORK WILL START*

February 6, 1982

23.

PROPOSED CASING AND CEMENTING PROGRAM

SIZE OF HOLE	SIZE OF CASING	WEIGHT PER FOOT	SETTING DEPTH	QUANTITY OF CEMENT
17 1/2"	13 3/8"	48#	900'	SURFACE
11 or 12 1/4"	8 5/8"	24#	1600'	ISOLATE WATER, OIL & GAS
7 7/8"	4 1/2"	10.5#	4000'	COVER ALL PAY

Proposed to drill 17 1/2" hole to approximately 900' to set 13 3/8" surface casing and cement to surface. Will reduce hole to 11" or 12 1/4" and drill to approximately 1600' to set 8 5/8" casing. Will nipple up RAM type BOPs, reduce hole to 7 7/8" and drill to total depth. Drilling medium will be air, foam, or mud as required.

Gas Sales are Dedicated.

NOTE: Location moved due to geological information and archaeology.

RECEIVED
JAN 15 1982

XC: USGS (6), TLS, CEN RCDS, ACCTG, MEC, LAND, PARTNERS, FILE, REM, ROSWELL

OIL & GAS
U.S. GEOLOGICAL SURVEY
ROSWELL, NEW MEXICO

IN ABOVE SPACE DESCRIBE PROPOSED PROGRAM: If proposal is to deepen or plug back, give data on present productive zone and proposed new productive zone. If proposal is to drill or deepen directionally, give pertinent data on subsurface locations and measured and true vertical depths. Give blowout preventer program, if any.

24.

SIGNED

R. F. Math

TITLE

REGULATOR COORDINATOR

DATE

1-14-82

(This space for Federal or State office use)

PERMIT NO.

APPROVED

APPROVAL DATE

(Orig. Sgd.) GEORGE H. STEWART

APPROVED BY

TITLE

DATE

CONDITIONS OF APPROVAL, IF ANY:

APR 13 1982

FOR

JAMES A. GILLHAM
DISTRICT SUPERVISOR

*See Instructions On Reverse Side

Posted Amended
Location ID-2
4-16-82

UNITED STATES
DEPARTMENT OF THE INTERIOR
GEOLOGICAL SURVEYSUBMIT IN 'LIGATE'
(Other instructions on
reverse side)Form approved.
Budget Bureau No. 42-R1425.

30-005-61346

(AMENDED) *Locality*

5. LEASE DESIGNATION AND SERIAL NO.

NM-29416

6. IF INDIAN, ALLOTTEE OR TRIBE NAME

7. UNIT AGREEMENT NAME

8. FARM OR LEASE NAME

MILNER FEDERAL

9. WELL NO.

4

10. FIELD AND POOL, OR WILDCAT

X UNDESIGNATED ABO

11. SEC., T., R., M., OR BLK.
AND SURVEY OR AREA

SEC 8, T8S, R25E

12. COUNTY OR PARISH

CHAVES

13. STATE
NEW MEXICO

1a. TYPE OF WORK

DRILL ☒DEEPEN ☐PLUG BACK ☐

b. TYPE OF WELL

OIL
WELL ☐GAS
WELL ☒

OTHER

SINGLE
ZONE ☒MULTIPLE
ZONE ☐

2. NAME OF OPERATOR

MESA PETROLEUM CO.

RECEIVED

3. ADDRESS OF OPERATOR

1000 VAUGHN BUILDING/MIDLAND, TEXAS 79701-4493

4. LOCATION OF WELL (Report location clearly and in accordance with any State requirements.)

At surface
990' FSL & 1780' FWL SE SW/4At proposed prod. zone
sameO. C. D.
ARTESIA, OFFICE

14. DISTANCE IN MILES AND DIRECTION FROM NEAREST TOWN OR POST OFFICE*

20 miles north/northeast of Roswell, New Mexico

15. DISTANCE FROM PROPOSED*

LOCATION TO NEAREST
PROPERTY OR LEASE LINE, FT.
(Also to nearest drlg. unit line, if any) 990'

16. NO. OF ACRES IN LEASE

640'

17. NO. OF ACRES ASSIGNED
TO THIS WELL

160

18. DISTANCE FROM PROPOSED LOCATION*
TO NEAREST WELL, DRILLING, COMPLETED,
OR APPLIED FOR, ON THIS LEASE, FT.

1320'

19. PROPOSED DEPTH

4000'

20. ROTARY OR CABLE TOOLS

Rotary

21. ELEVATIONS (Show whether DF, RT, GR, etc.)

3625' GR

22. APPROX. DATE WORK WILL START*

February 6, 1982

23.

PROPOSED CASING AND CEMENTING PROGRAM

SIZE OF HOLE	SIZE OF CASING	WEIGHT PER FOOT	SETTING DEPTH	QUANTITY OF CEMENT
17 1/2"	13 3/8"	48#	900'	SURFACE ISOLATE WATER, OIL & GAS COVER ALL PAY
11 or 12 1/4"	8 5/8"	24#	1600'	
7 7/8"	4 1/2"	10.5#	4000'	

Proposed to drill 17 1/2" hole to approximately 900' to set 13 3/8" surface casing and cement to surface. Will reduce hole to 11" or 12 1/4" and drill to approximately 1600' to set 8 5/8" casing. Will nipple up RAM type BOPs, reduce hole to 7 7/8" and drill to total depth. Drilling medium will be air, foam, or mud as required.

Gas Sales are Dedicated.

NOTE: Location moved due to geological information and archaeology.

XC: USGS (6), TLS, CEN RCDS, ACCTG, MEC, LAND, PARTNERS, FILE, REM, ROSWELL

IN ABOVE SPACE DESCRIBE PROPOSED PROGRAM: If proposal is to deepen or plug back, give data on present productive zone and proposed new productive zone. If proposal is to drill or deepen directionally, give pertinent data on subsurface locations and measured and true vertical depths. Give blowout preventer program, if any.

24.

SIGNED

R. E. Math

TITLE

REGULATOR COORDINATOR

DATE

1-14-82

(This space for Federal or State office use)

PERMIT NO.

APPROVAL DATE

APPROVED BY

TITLE

DATE

CONDITIONS OF APPROVAL, IF ANY:

*See Instructions On Reverse Side

All distances must be from the outer boundaries of the Section.

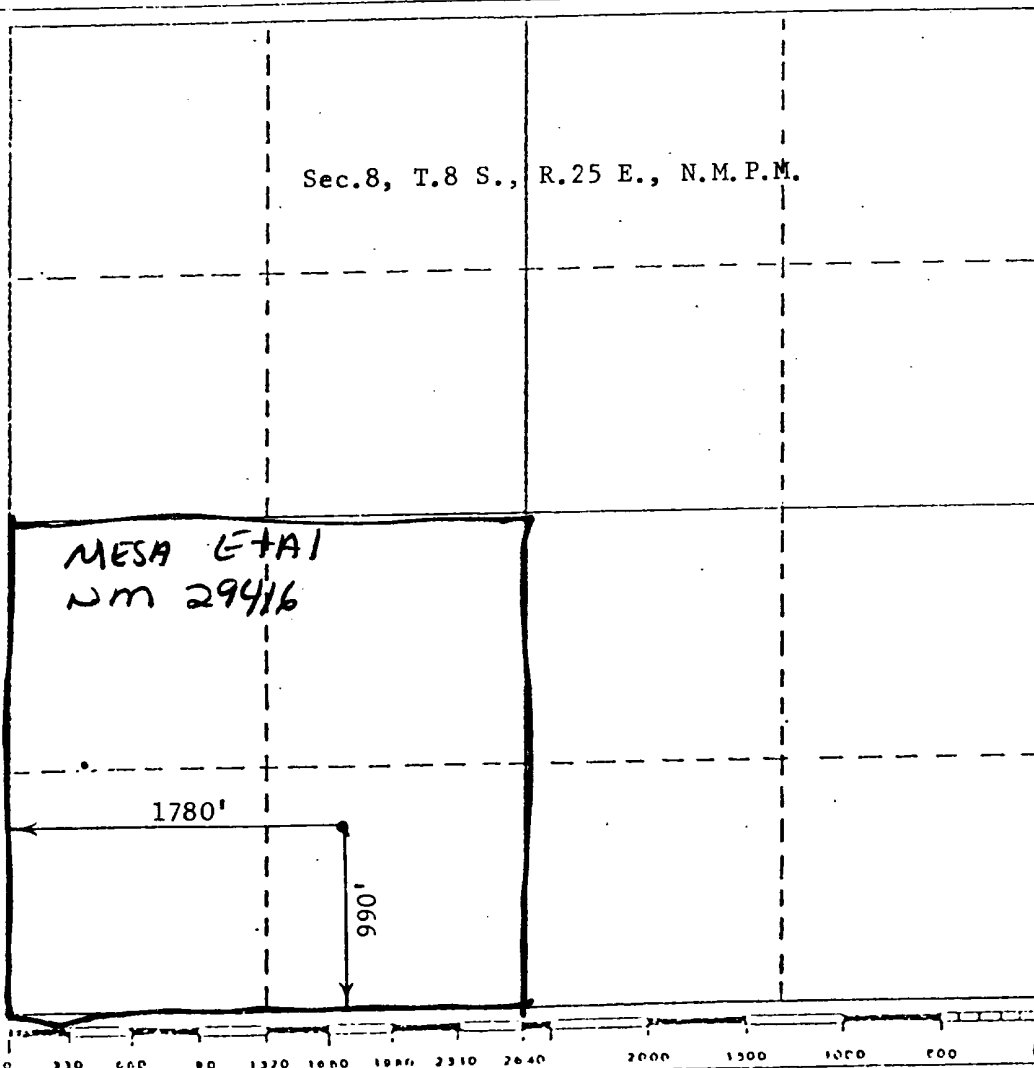
Operator Mesa Petroleum Co.		Lease Milner Federal		Well No. #4
Unit Letter N	Section 8	Township 8 South	Range 25 East	County Chaves
Actual Footage Location of Well: 1780 feet from the West line and 990 feet from the South line				
Ground Level Elev. 3625	Producing Formation ABO	Pool Undesignated	Dedicated Acreage: SW/4 160 Acres	

1. Outline the acreage dedicated to the subject well by colored pencil or hatchure marks on the plat below.
2. If more than one lease is dedicated to the well, outline each and identify the ownership thereof (both as to working interest and royalty).
3. If more than one lease of different ownership is dedicated to the well, have the interests of all owners been consolidated by communitization, unitization, force-pooling, etc?

☐ Yes ☒ No If answer is "yes," type of consolidation _____

If answer is "no," list the owners and tract descriptions which have actually been consolidated. (Use reverse side of this form if necessary.) _____

No allowable will be assigned to the well until all interests have been consolidated (by communitization, unitization, forced-pooling, or otherwise) or until a non-standard unit, eliminating such interests, has been approved by the Division.



CERTIFICATION

I hereby certify that the information contained herein is true and complete to the best of my knowledge and belief.

Name
L.D. Reed

Position
Regulatory Agent

Company

Mesa Petro. Co.

Date
1/14/82

I hereby certify that the well location shown on this plat was plotted from field notes of actual surveys made by me or under my supervision, and that the same is true and correct to the best of my knowledge and belief.

Date Surveyed

January 14, 1982

Registered Professional Engineer and/or Land Surveyor

John D. Jaques, E. & L.S.

Certificate No.

6290

APPLICATION FOR PERMIT TO DRILL

MESA PETROLEUM CO.
MILNER FEDERAL #4
990' FSL & 1780' FWL, SEC 8, T8S, R25E
CHAVES COUNTY, NEW MEXICO

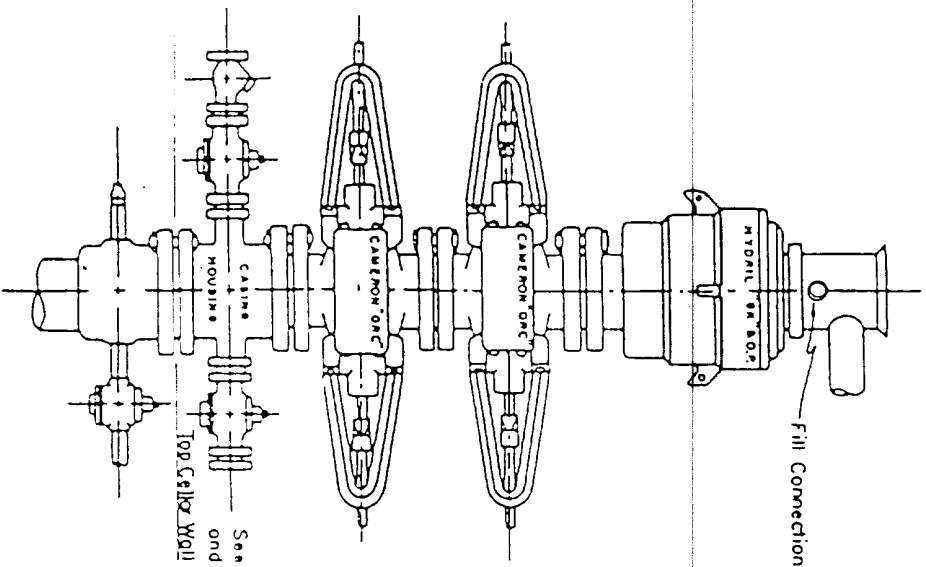
LEASE NO. NM-29416

In conjunction with Form 9331-C, Application For Permit to Drill subject well, the following additional information is provided:

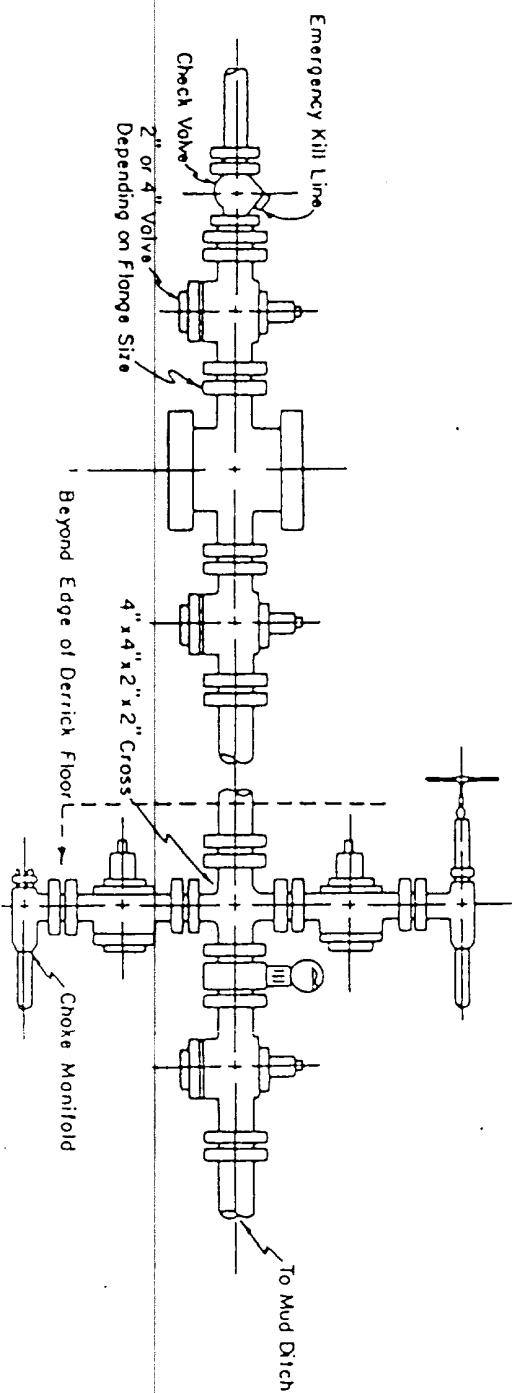
1. Applicable portions of the GENERAL REQUIREMENTS FOR OIL AND GAS OPERATIONS ON FEDERAL LEASES, Roswell District, Geological Survey of September 1, 1980 will be adhered to.
2. Geological markers are estimated as follows:

SEVEN RIVERS	Surface
SAN-ANDRES	533'
GLORIETA	1172'
YESO	1356'
TUBB	2797'
ABO	3490'
3. Hydrocarbon bearing strata may occur in the ABO formation(s). No fresh water is expected to be encountered below 900'.
4. The Casing and Blowout Preventer Program will be determined by hole conditions as encountered. See Exhibit VI. Anticipate drilling with air or foam using ram type preventer and rotating head for well control. The 13 3/8" casing will be set at approximately 900' to protect any fresh water zones and cemented to the surface. The 8 5/8" casing will be set at approximately 1600' if water zones have been encountered or omitted if not and ram type preventers installed. Sufficient amounts and kinds of cement would be used to ensure any water, gas, or oil zones encountered are isolated and shut off down to the casing point if run. The 4 1/2" production casing will be set at total depth or shallower depending upon the depth of the deepest commercial hydrocarbon bearing strata encountered.
5. No drill stem test or coring program is planned. The logging program may consist of a GR-CNL from surface total depth and FDC from casing point to total depth.
6. Anticipated drilling time is ten days with completion operations to follow as soon as a completion unit is available.

Blow-out Preventers hydril and choke manifold ore all 900 Series



3,000 PSI WORKING PRESSURE
BLOW-OUT PREVENTER HOOK-UP




3,000 PSI WORKING PRESSURE
KILL, CHOKE, AND FILL CONNECTIONS


DETAIL OF 4" FLOW LINE CHOKE ASSEMBLY

Minimum assembly for 3,000 PSI working pressure will consist of three preventers.
The bottom and middle preventers may be Cameron.

NOTE: HYDRIL, not installed on shallow-low pressure wells.
RAM type BOPs are API 10" X 3000 PSI



MESA
 PETROLEUM CO.
PENNYMAN BASIN DIVISION



E

X

H

I

B

I

T

V

I

DATE

INITIALS

DATE

INITIALS