

OF COPIES RECEIVED	
DISTRIBUTION	
ANTA FE	
ILE	
S.G.S.	
AND OFFICE	
PERATOR	

RECEIVED  
NEW MEXICO OIL CONSERVATION COMMISSION

JAN 22 1982

O. C. D.  
ARTESIA, OFFICE

30-005-61376  
Form C-101  
Revised 14-65

5A. Indicate Type of Lease  
STATE ☒ REC ☐  
5. State Oil & Gas Lease No.  
LG-9151

APPLICATION FOR PERMIT TO DRILL, DEEPEN, OR PLUG BACK

Type of Work  
Type of Well  
DRILL ☒ DEEPEN ☐ PLUG BACK ☐  
OIL WELL ☐ GAS WELL ☒ OTHER ☐ SINGLE ZONE ☐ MULTIPLE ZONE ☐

Name of Operator  
ANR PRODUCTION COMPANY

Address of Operator  
3100 N. "A", Bldg. E, Suite 102 Midland, Texas 79701

Location of Well  
UNIT LETTER G LOCATED 1980 FEET FROM THE North LINE

0 1980 FEET FROM THE East LINE OF SEC. 32 TWP. 7S RCE. 22E WPM

7. Unit Agreement Name

8. Farm or Lease Name  
32  
Rock House State 32

9. Well No.  
1

10. Field and Pool or Wildcat  
Undesignated Abo

12. County  
Chaves

19. Proposed Depth 3500'	19A. Formation Abo	20. Rotary or C.T. Rotary
21A. Kind & Status Plug. Bond Blanket	21B. Drilling Contractor Unknown	22. Approx. Date Work will start 2-15-82

PROPOSED CASING AND CEMENT PROGRAM					
SIZE OF HOLE	SIZE OF CASING	WEIGHT PER FOOT	SETTING DEPTH	SACKS OF CEMENT	EST. TOP
12-1/4"	8-5/8"	24#	850'	500	Circulate
7-7/8"	4-1/2"	10.5#	3500'	300	850'

Will set 20" conductor pipe at 40' and cement to surface.

Propose to drill 12-1/4" hole to 850' or deeper to set 8-5/8" surface casing and cement to surface. Will reduce hole to 7-7/8" install 10" 900 series double BOP's and drill to total depth of 3500'. Will drill using mud. Gas is not dedicated.

Posted ID-1  
AFI + ML Book  
1-29-82

APPROVAL VALID FOR: 180 DAYS  
PERMIT EXPIRES 7-26-82  
UNLESS DRILLING UNDERWAY

ABOVE SPACE DESCRIBE PROPOSED PROGRAM: IF PROPOSAL IS TO DEEPEN OR PLUG BACK, GIVE DATA ON PRESENT PRODUCTIVE ZONE AND PROPOSED NEW PRODUCTIVE ZONE. GIVE BLOWOUT PREVENTER PROGRAM, IF ANY.

I hereby certify that the information above is true and complete to the best of my knowledge and belief.

Signed Joe W. Younger Title Drilling + Engr. Mgr. Date 1-20-82

(This space for State Use)

APPROVED BY Mike Williams TITLE OIL AND GAS INSPECTOR N.M.O.C.C. in sufficient DATE JAN 26 1982

CONDITIONS OF APPROVAL, IF ANY: 8 5/8 casing

NEW MEXICO OIL CONSERVATION COMMISSION  
WELL LOCATION AND ACREAGE DEDICATION PLAT

Form C-192  
Supersedes C-128  
Effective 1-1-65

All distances must be from the outer boundaries of the Section

Operator <b>A. N. R. Production Company</b>		Lease <b>Rock House State 32</b>		Well No. <b>1</b>
Section <b>G</b>	Section <b>32</b>	Township <b>7 South</b>	Range <b>22 East</b>	County <b>Chaves</b>

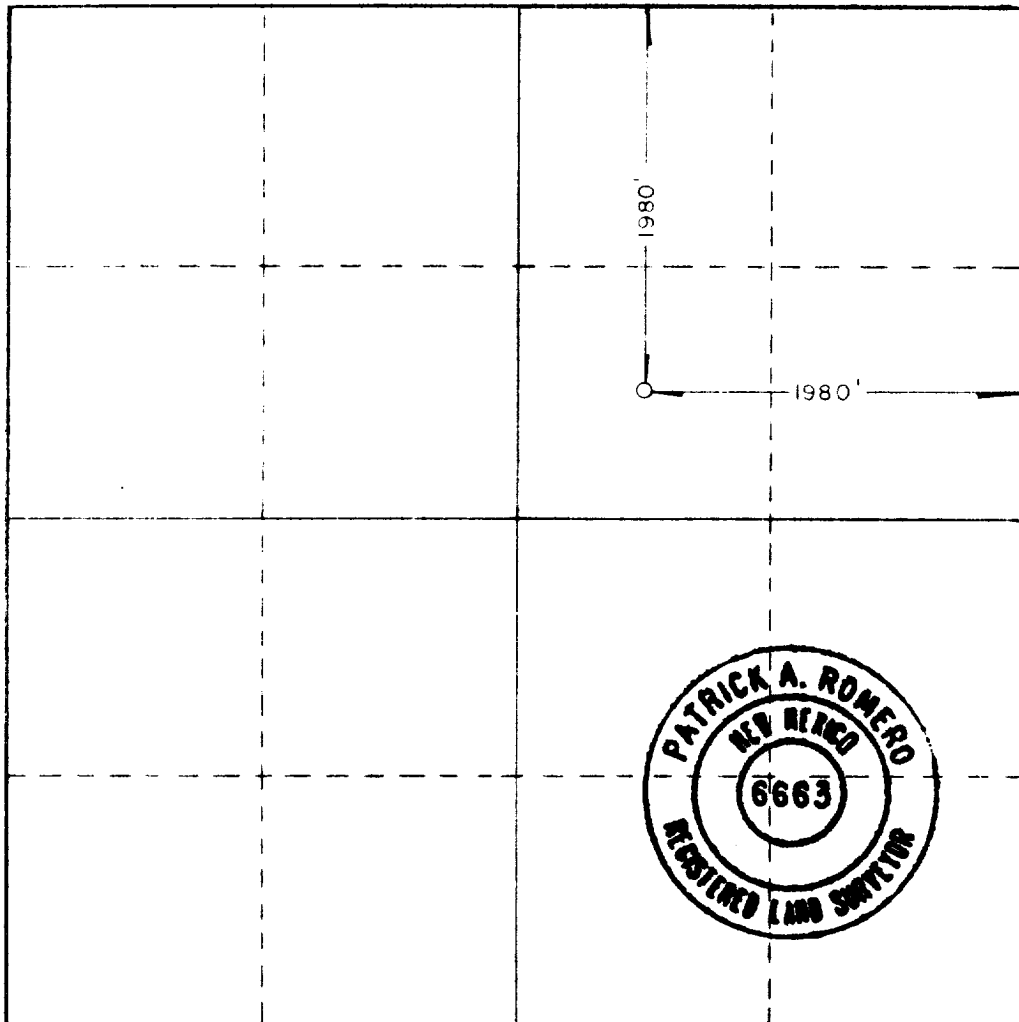
Acreage Location of Well:				
<b>1980</b>	feet from the	<b>north</b>	line and	<b>1980</b>
				feet from the
				<b>east</b>
Ground Level Elev. <b>4319.3'</b>	Producing Formation <b>Abo</b>		Pool <b>Wildcat also Undesignated</b>	Dedicated Acreage: <b>160</b>

- Outline the acreage dedicated to the subject well by colored pencil or hachure marks on the plat below.
- If more than one lease is dedicated to the well, outline each and identify the ownership thereof (both as to working interest and royalty).
- If more than one lease of different ownership is dedicated to the well, have the interests of all owners been consolidated by communitization, unitization, force-pooling, etc?

☐ Yes ☐ No If answer is "yes," type of consolidation \_\_\_\_\_

If answer is "no," list the owners and tract descriptions which have actually been consolidated (Use reverse side of this form if necessary.) \_\_\_\_\_

No allowable will be assigned to the well until all interests have been consolidated (by communitization, unitization, forced-pooling, or otherwise) or until a non-standard unit, eliminating such interests, has been approved by the Commission.



CERTIFICATION

I hereby certify that the information contained herein is true and complete to the best of my knowledge and belief.

*Joe W Younger*  
Name

**Joe W. Younger**  
Position

**Drilling & Engineering Mgr.**  
Company

**ANR Production Company**  
Date

**1-8-82**

I hereby certify that the well location shown on this plat was plotted from field notes of actual surveys made by me or under my supervision, and that the same is true and correct to the best of my knowledge and belief.

Date Surveyed

**11-17-81**

Registered Professional Engineer  
and/or Land Surveyor

*Patrick A. Romero*

Certificate No. **JOHN W. WEST 676**  
**PATRICK A. ROMERO 6663**  
**Ronald J. Eidson 3239**



