

NM OIL CONS. COMMISSION
Drawn: NM 88210
UNITED STATES
DEPARTMENT OF THE INTERIOR
GEOLOGICAL SURVEYSUBMIT IN ORIGINAL
(Other Instr. as on
reverse side)FORM APPROVED
Budget Bureau No. 42-R1425.

30-005-61409

APPLICATION FOR PERMIT TO DRILL, DEEPEN, OR PLUG BACK

1a. TYPE OF WORK

DRILL ☒DEEPEN ☐PLUG BACK ☐

5. LEASE DESIGNATION AND SERIAL NO.

NM 22059

6. IF INDIAN, ALLOTTEE

RECEIVED

7. UNIT AGREEMENT NAME

FEB 17 1982

8. FARM OR LEASE NAME

April O. C. D.

9. WELL NO.

ARTESIA, OFFICE

3

10. FIELD AND POOL, OR WILDCAT

Undesignated ABO

11. SEC., T., R., M., OR BLK.
AND SURVEY OR AREAlt-F
Sec. 26-8S-22E

12. COUNTY OR PARISH

Chaves

13. STATE

N.M.

b. TYPE OF WELL

OIL
WELL ☐GAS
WELL ☒OTHER ☐SINGLE
ZONE ☒MULTIPLE
ZONE ☐

2. NAME OF OPERATOR

McKAY OIL CORPORATION

3. ADDRESS OF OPERATOR

P.O. Box 2014, Roswell, N.M. 88201

4. LOCATION OF WELL (Report location clearly and in accordance with any State requirements.*)

At surface

1750' /N 1980' /W

Sec. 26-8S-22E

At proposed prod. zone

Same

14. DISTANCE IN MILES AND DIRECTION FROM NEAREST TOWN OR POST OFFICE*

14 Miles Northwest of Roswell, New Mexico

15. DISTANCE FROM PROPOSED*

LOCATION TO NEAREST
PROPERTY OR LEASE LINE, FT.
(Also to nearest drlg. unit line, if any)

1750'

16. NO. OF ACRES IN LEASE

2560

17. NO. OF ACRES ASSIGNED
TO THIS WELL

160

18. DISTANCE FROM PROPOSED LOCATION*

TO NEAREST WELL, DRILLING, COMPLETED,
OR APPLIED FOR, ON THIS LEASE, FT.

None

19. PROPOSED DEPTH

3500'

20. ROTARY OR CABLE TOOLS

Rotary

21. ELEVATIONS (Show whether DF, RT, GR, etc.)

4069' GL

22. APPROX. DATE WORK WILL START*

February 5, 1982

23.

PROPOSED CASING AND CEMENTING PROGRAM

SIZE OF HOLE	SIZE OF CASING	WEIGHT PER FOOT	SETTING DEPTH	QUANTITY OF CEMENT
12 1/4"	8 5/8"	24# J-55	1500'±	Circulate to Surface
7 7/8"	4 1/2"	10.5# J-55	3500'±	350 sx
				To isolate water, oil and gas

Propose to drill 12 1/4" hole to approximately 1500'. Set 8 5/8" surface casing and cement to surface. Install ram type BOP. Test BOP and casing to 1200 psi. Drill 7 7/8" hole to ABO objective. Run 4 1/2" production casing and cement with sufficient cement to isolate fresh water from oil or gas zones. Complete by perforating and stimulating favorable intervals.

Gas is not dedicated.

IN ABOVE SPACE DESCRIBE PROPOSED PROGRAM: If proposal is to deepen or plug back, give data on present productive zone and proposed new productive zone. If proposal is to drill or deepen directionally, give pertinent data on subsurface locations and measured and true vertical depths. Give blowout preventer program, if any.

24.

SIGNED

JERRY W. LONG

(This space for Federal or State office use)

TITLE Agent

DATE January 29, 1982

PERMIT NO.

APPROVED

APPROVED BY
CONDITIONS OF APPROVAL

FEB 12 1982

JAMES A. GILLHAM
DISTRICT SUPERVISOR

APPROVAL DATE

APPROVAL SUBJECT TO
GENERAL REQUIREMENTS AND
SPECIAL STIPULATIONS
ATTACHED

DATE

See Instructions On Reverse Side

Post ID-2
4-1-83
Exp. Inst.

All distances must be from the outer boundaries of the Section.

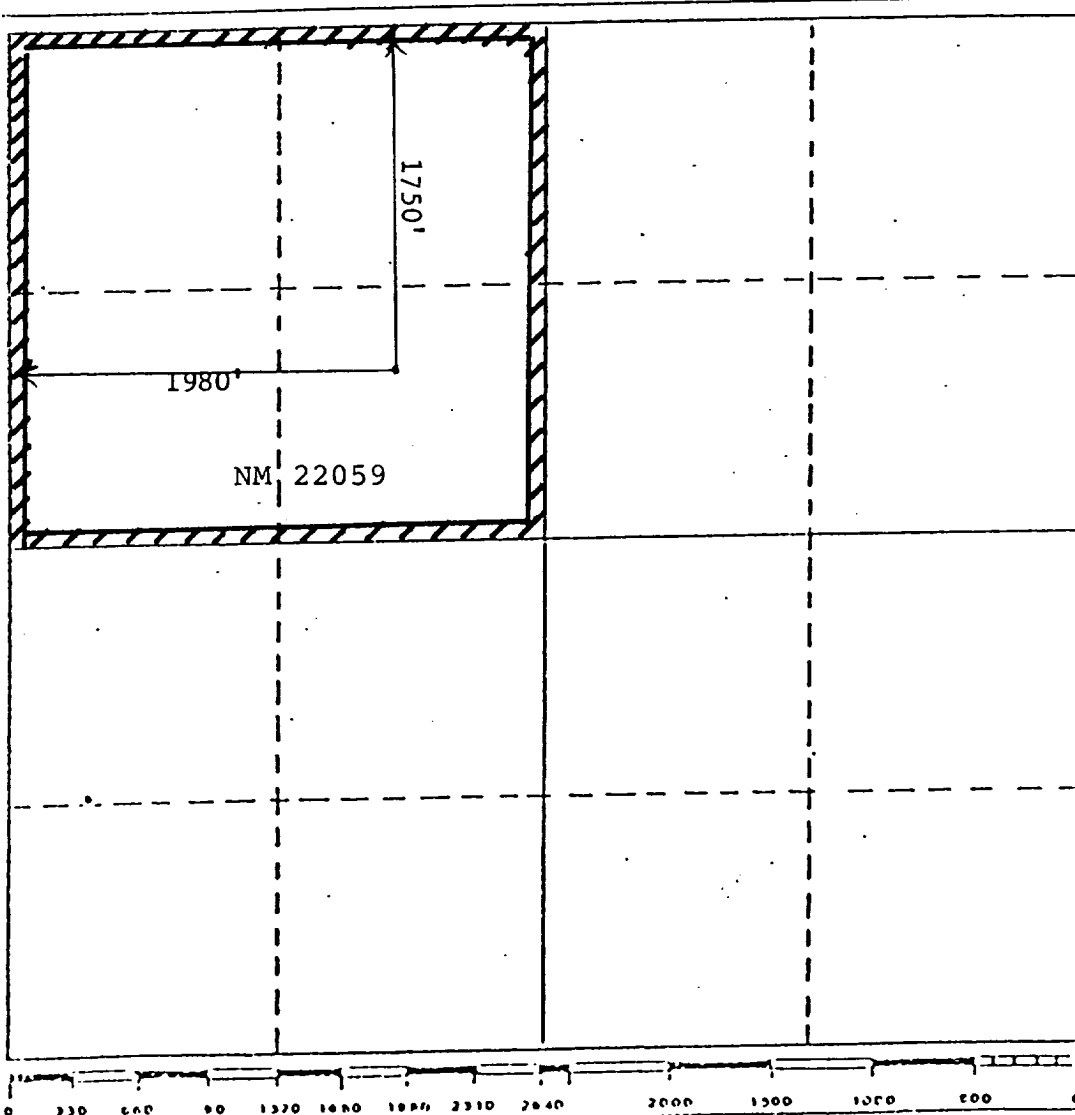
Operator McKay Oil Corp.		Lease April,		Well No. 3
Unit Letter F	Section 26	Township 8South	Range 22 East	County Chaves
Actual Footage Location of Well: 1750 feet from the North line and 1980 feet from the West line				
Ground Level Elev. 4069	Producing Formation Abo	Pool Undesignated Abo	Dedicated Acreage: 160 Acres	

1. Outline the acreage dedicated to the subject well by colored pencil or hatchure marks on the plat below.
2. If more than one lease is dedicated to the well, outline each and identify the ownership thereof (both as to working interest and royalty). Single Lease
3. If more than one lease of different ownership is dedicated to the well, have the interests of all owners been consolidated by communitization, unitization, force-pooling, etc?

☐ Yes ☐ No If answer is "yes," type of consolidation _____

If answer is "no," list the owners and tract descriptions which have actually been consolidated. (Use reverse side of this form if necessary.) _____

No allowable will be assigned to the well until all interests have been consolidated (by communitization, unitization, forced-pooling, or otherwise) or until a non-standard unit, eliminating such interests, has been approved by the Division.



CERTIFICATION

I hereby certify that the information contained herein is true and complete to the best of my knowledge and belief.

Jerry W. Long
Name
JERRY W. LONG
Position
Agent
Company
McKAY OIL CORPORATION
Date
January 29, 1982

I hereby certify that the well location shown on this plat was plotted from field notes of actual surveys made by me or under my supervision, and that the same is true and correct to the best of my knowledge and belief.

Date Surveyed
January 25, 1982
Registered Professional Engineer and/or Land Surveyor
JOHN D. JAKUES
Certificate No. **6290**

SUPPLEMENTAL DRILLING DATA

McKAY OIL CORPORATION
No.3 April
SE $\frac{1}{4}$ NW $\frac{1}{4}$ Sec.26-8S-22E
Chaves County, N.M.

NM 22059

The following items supplement Form 9-331C in accordance with instructions contained in NTL-6.

1. SURFACE FORMATION: San Andres
2. ESTIMATED TOPS OF GEOLOGIC MARKERS:

Glorieta	550'
Yeso	750'
Tubb	2000'
Abo	2550'
3. ESTIMATED DEPTHS TO WATER, OIL OR GAS FORMATION:

Fresh water	0'-1000'
Gas	2550'-3500'
4. PROPOSED CASING PROGRAM: See Form 9-331C
5. PRESSURE CONTROL EQUIPMENT: Blowout preventer stack will consist of at least a double-ram blowout preventer rated to 3000#WP. A sketch of the BOP is attached.
6. CIRCULATING MEDIUM:

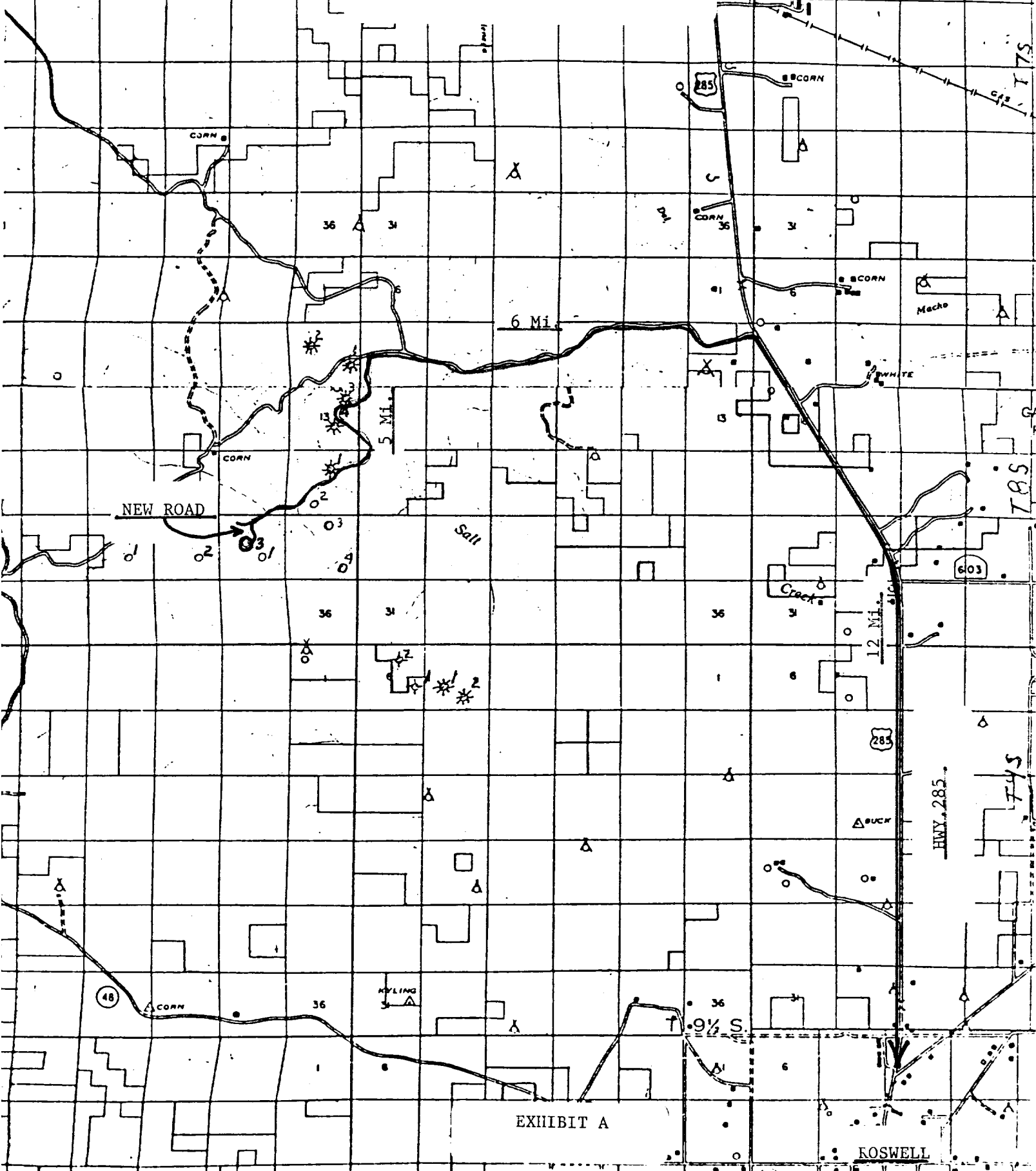
0'-1000'	Fresh water native mud
1000'-1500'	Salt gel mud
1500'-TD	Salt gel and diesel

Mud additives will be used to control water loss.
7. AUXILIARY EQUIPMENT: Full-opening kelly cock, to fit the drill string in use, will be kept on the rig floor at all times.
8. TESTING, LOGGING AND CORING PROGRAM:

Samples:	Catch samples from surface to TD.
DST's:	None
Logging:	GR-CNL from surface to TD.
Coring:	None

9. ABNORMAL PRESSURES, TEMPERATURES OR HYDROGEN SULFIDE: None anticipated. Maximum bottom-hole pressure should not exceed 1500 psi.
10. ANTICIPATED STARTING DATE: Drilling will commence about February 5, 1982. Drilling should be completed within 10 days. Completion operations (perforations and stimulation) will follow drilling operations.

McKAY OIL CORPORATION
No. 3 April
SE 1/4 NW 1/4 Sec. 26-8S-22E
Chaves County, N.M.

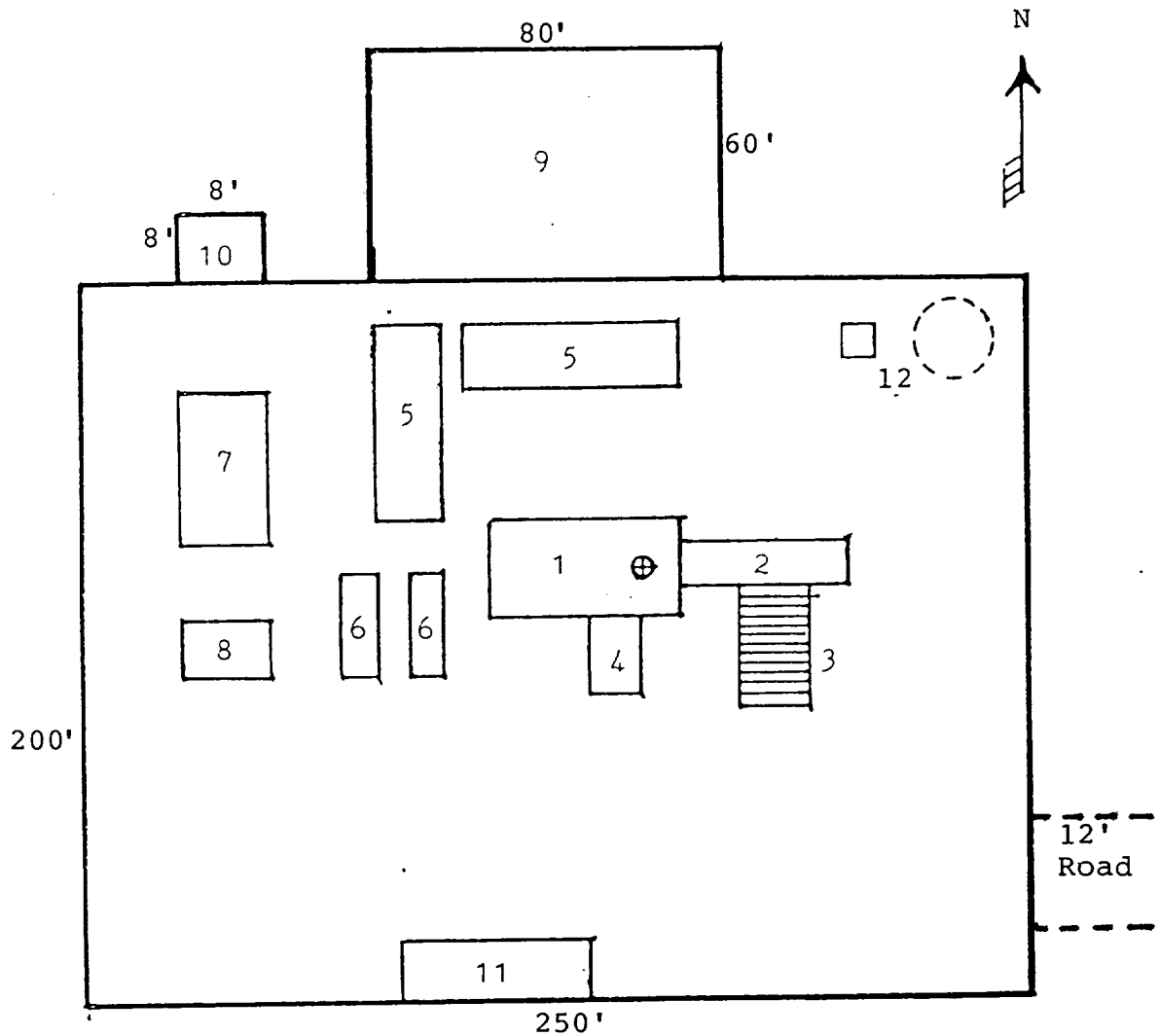


McKAY OIL CORPORATION
No. 3 April
SE 1/4 Sec. 26-8S-22E.
Chaves County, N.M.

EXHIBIT B

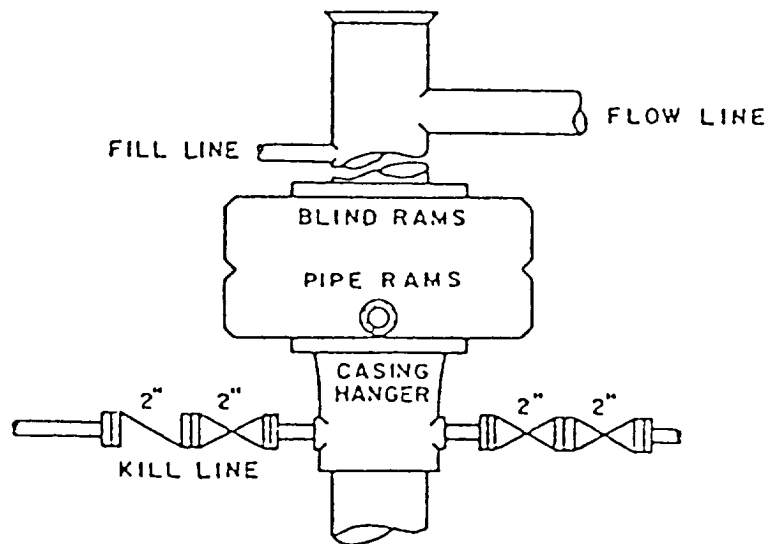
EXHIBIT B

McKAY OIL CORPORATION
 No.3 April
 SE¼NW¼ Sec.26-8S-22E
 Chaves County, N.M.



- | | |
|-----------------|---------------------------|
| 1. Substructure | 7. Water Tank |
| 2. Catwalk | 8. Light Plant |
| 3. Pipe Rack | 9. Reserve Pit |
| 4. Doghouse | 10. Trash Pit |
| 5. Mud Pits | 11. Trailer House |
| 6. Mud Pumps | 12. Production Facilities |

McKAY OIL CORPORATION
No.3 April
SE $\frac{1}{4}$ NW $\frac{1}{4}$ Sec.26-8S-22E
Chaves County, N.M.



BOP STACK

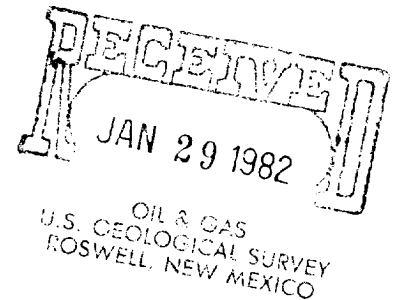
3000 PSI WORKING PRESSURE
OPERATE RAMS DAILY



JERRY W. LONG
CONSULTANT

January 29, 1982

District Supervisor
Minerals Management Service
P.O. Drawer 1857
Roswell, N.M. 88201



Gentlemen:

Submitted herewith, for your review and approval, are 6 copies of Application to Drill and required NTL-6 attachments for the drilling of the McKay Oil Corporation No.3 April well, located in the SE $\frac{1}{4}$ NW $\frac{1}{4}$ Sec.26, T.8S., R.22E., Chaves County, New Mexico, on Federal lease NM 22059.

Designation of Operator from Blackbird Co. to McKay Oil Corporation will be filed under separate cover. The lessee has a \$25,000 Statewide bond on file with BLM at Santa Fe.

Please send an approved copy to the operator at the address on Form 9-331C and make appropriate distribution to State and Federal Agencies.

If you have any questions about this application, call me at (505)622-1299.

Sincerely yours,

JERRY W. LONG

JWL/bl1

1cc: MMS
Operator