

NM OIL CONS. COMMISSION

Drawer DD

Artesia, N.M. 88210 UNITED STATES

DEPARTMENT OF THE INTERIOR

GEOLOGICAL SURVEY

SUBMIT IN DUPLICATE

(Other in: one on
reverse side)Form approved.
Budget Bureau No. 42-R1425.

30-005-61434

C/SF

APPLICATION FOR PERMIT TO DRILL, DEEPEN, OR PLUG BACK

1a. TYPE OF WORK

DRILL ☒DEEPEN ☐PLUG BACK ☐

b. TYPE OF WELL

OIL WELL ☒GAS WELL ☐OTHER ☐SINGLE ZONE ☒MULTIPLE ZONE ☐

2. NAME OF OPERATOR

Cibola Energy Corporation

3. ADDRESS OF OPERATOR

P.O. Box 1668, Albuquerque, New Mexico 87103

4. LOCATION OF WELL (Report location clearly and in accordance with any State requirement)

At surface

1650' FSL & 1980' FEL

At proposed prod. zone

14. DISTANCE IN MILES AND DIRECTION FROM NEAREST TOWN OR POST OFFICE*

24 miles ENE of Roswell

15. DISTANCE FROM PROPOSED*

LOCATION TO NEAREST
PROPERTY OR LEASE LINE, FT. 1650'
(Also to nearest drlg. unit line, if any)

16. NO. OF ACRES IN LEASE

2560

17. NO. OF ACRES ASSIGNED
TO THIS WELL

40

18. DISTANCE FROM PROPOSED LOCATION*
TO NEAREST WELL, DRILLING, COMPLETED,
OR APPLIED FOR, ON THIS LEASE, FT.

1.5 miles

19. PROPOSED DEPTH

7450

20. ROTARY OR CABLE TOOLS

Rotary

21. ELEVATIONS (Show whether DF, RT, GR, etc.)

3827.2' GR

22. APPROX. DATE WORK WILL START*

March 1, 1982

23.

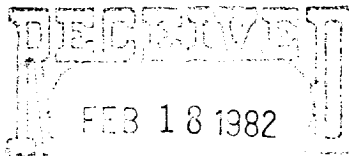
PROPOSED CASING AND CEMENTING PROGRAM

SIZE OF HOLE	SIZE OF CASING	WEIGHT PER FOOT	SETTING DEPTH	QUANTITY OF CEMENT
17"	13 3/8"	48#	500'	200 sacks CIRCULATE
12 1/4"	8 5/8"	24-28#	2370'	**
7 7/8"	5 1/2"	15.5-17#	TD	**

MUD PROGRAM - See Exhibit "G"

BOP PROGRAM - See Attachment

Gas not dedicated

OIL & GAS
U.S. GEOLOGICAL SURVEY
ROSWELL, NEW MEXICO

** Cement program to be decided after review of logs.

IN ABOVE SPACE DESCRIBE PROPOSED PROGRAM: If proposal is to deepen or plug back, give data on present productive zone and proposed new productive zone. If proposal is to drill or deepen directionally, give pertinent data on subsurface locations and measured and true vertical depths. Give blowout preventer program, if any.

24.

SIGNED

(This space for Federal or State office use)

PERMIT NO.

APPROVED

APPROVED BY

CONDITIONS OF APPROVAL, IF ANY

FEB 26 1982

JAMES A. GILLHAM
DISTRICT SUPERVISOR

TITLE

Operations Mgr.

DATE

Feb 8, 1982

TITLE

APPROVAL SUBJECT TO
GENERAL REQUIREMENTS AND
SPECIAL STIPULATIONS
ATTACHED

DATE

*See Instructions On Reverse Side

**MEXICO OIL CONSERVATION COMMISSION
WELL LOCATION AND ACREAGE DEDICATION PLAT**

Form C-102
Supersedes C-128
Effective 1-1-65

All distances must be from the outer boundaries of the Section

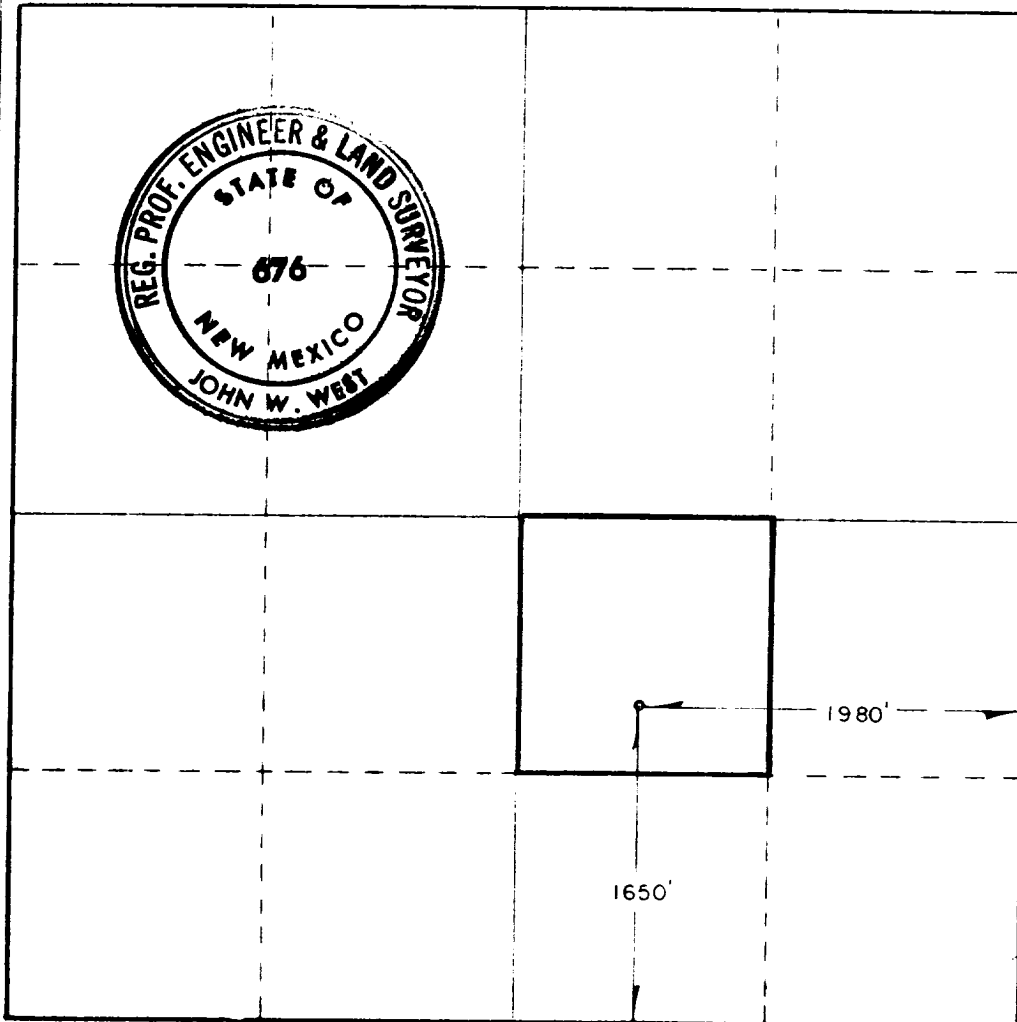
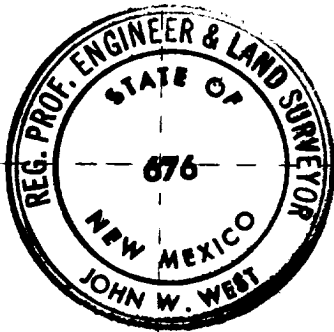
Operator CIBOLA ENERGY CORP.			Lease ACEITE		Well No. 21
Unit Letter J	Section 12	Township 9 South	Range 27 East	County Clayton	
Actual Footage Location of Well: 1650 feet from the South line and 1980 feet from the East line					
Ground Level Elev. 3887.2	Producing Formation Siluro-Devonian		Pool Wildcat	Dedicated Acreage: 40 Acres	

1. Outline the acreage dedicated to the subject well by colored pencil or hatchure marks on the plat below.
2. If more than one lease is dedicated to the well, outline each and identify the ownership thereof (both as to working interest and royalty).
3. If more than one lease of different ownership is dedicated to the well, have the interests of all owners been consolidated by communitization, unitization, force-pooling, etc?

☐ Yes ☒ No If answer is "yes," type of consolidation _____

If answer is "no," list the owners and tract descriptions which have actually been consolidated. (Use reverse side of this form if necessary.) All leases held by operator and participating parties

No allowable will be assigned to the well until all interests have been consolidated (by communitization, unitization, forced-pooling, or otherwise) or until a non-standard unit, eliminating such interests, has been approved by the Commission.



CERTIFICATION

I hereby certify that the information contained herein is true and complete to the best of my knowledge and belief.

Anita Vigil

Name
Anita Vigil

Position
Drilling Secretary

For my
Cibola Energy Corporation

Date
February 15, 1982

I hereby certify that the well location shown on this plat was plotted from field notes of actual surveys made by me or under my supervision, and that the same is true and correct to the best of my knowledge and belief.

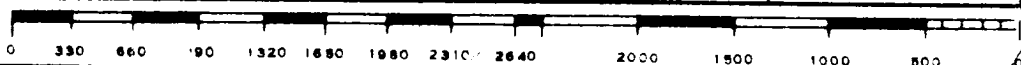
Date Surveyed

2/15/82

Registered Professional Engineer and/or Land Surveyor

John W. West

Certificate No. **JOHN W. WEST 676**
PATRICK A. ROMERO 6863
Ronald J. Eidson 3239



APPLICATION FOR DRILLING
CIBOLA ENERGY CORPORATION
AGUA NEGRA #2 SEC. 8-9S-28E
CHAVES COUNTY, NEW MEXICO

In conjunction with form 9-331, Application for Permit to Drill the subject well, Cibola Energy Corporation submits the following ten items of pertinent information in accordance with Minerals Management Service requirements.

1. The geologic surface is quarternary alluvial fill.
2. Estimated tops of geologic markers are as follows:

Yates	425
Queen	1055
San Andres	1550
Slaughter	2170
Abo	5000
Wolfcamp	5850
Miss.	6600
Devonian	6900
Pre-Cambrian	7175

3. The estimated depth at which water, oil, or gas formations are expected to be encountered:

Water	420
Oil, Gas-Yates	425
Queen	1055
Slaughter	2170
Abo	5000
Miss.	6600
Devonian	6900

4. Proposed casing program - see 9-331C and Exhibit "A".
5. Pressure control equipment - Shaffer SPH 9" 3000 psi and Shaffer LWP 9" double BOP.
6. Mud program - See Exhibit "B".
7. Auxiliary Equipment - Rig inventory will be sent when rig has been chosen.
8. Testing, logging and coring program - possible 4 DST's. 1) Miss. - 6600, 2) Devonian - 6900'.
9. No abnormal temperature or pressure is expected.
10. Anticipated starting date is March 1, 1982.

EXHIBIT "A"

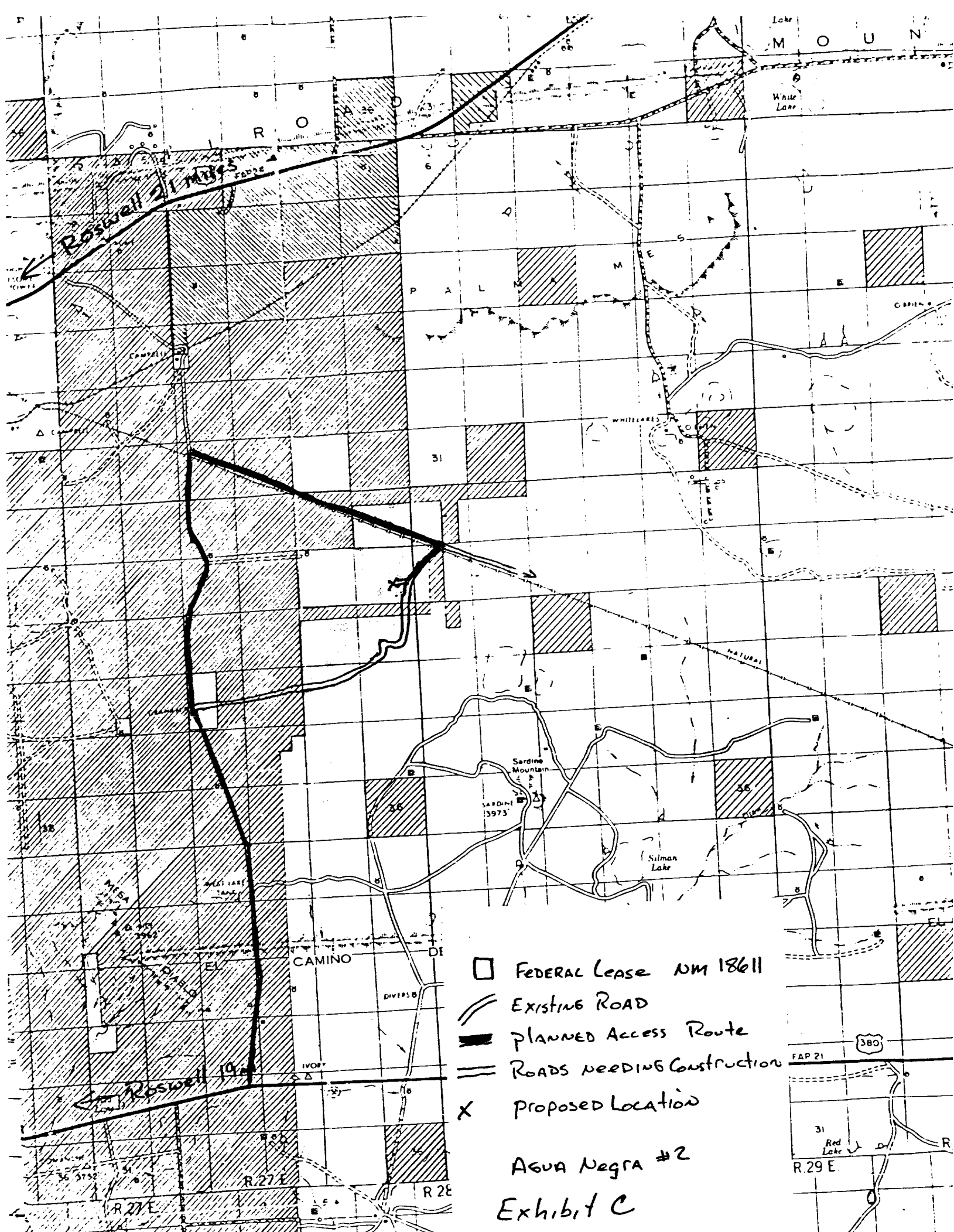
DRILLING, CASING AND CEMENTING PROGRAM

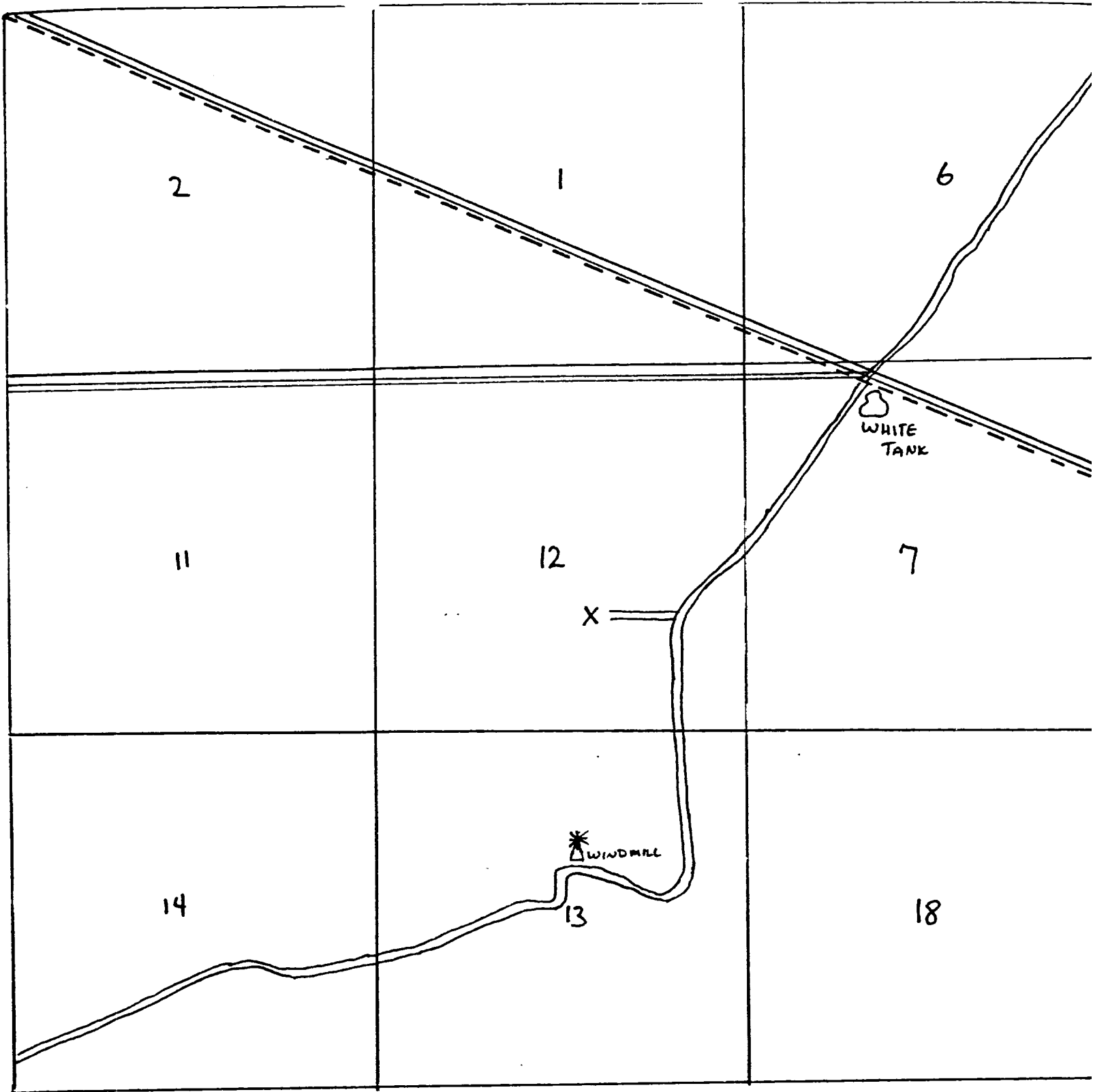
1. Drill a 24" hole to 30' with a rathole rig. Run 30' 20" casing and pour 2 yards Redi Mix Cement to fill annulus to surface.
2. Rig up rotary rig and drill a 16" hole to 500'. Run 500' of 13 3/8" 48# per foot casing and cement with 200 sacks Class "C" Cement with 2% CaCl. WOC 18 hours.
3. Drill out under 13 3/8" casing with a 12" bit. Drill to 2500' and run 150' of 8 5/8" 28# J-55 casing, 2220' of 8 5/8" 24# J-55 casing, 8 centralizers, a Texas Pattern guide shoe, and an insert float in the bottom collar. This string will be cemented with 485 sacks light cement and 200 sacks Class "C" Cement with 6#/sack salt and 2% CaCl. WOC 18 hours.
4. Drill out under 8 5/8" casing with a 7 7/8" bit. Drill to TD as picked by geologist on location. Log hole with CNL Density, DLL, MLL, Acoustilog, and Diplog. If hole is to be produced, we plan to run casing and cement as required by geologist and following Mineral Management Service rules and regulations.

EXHIBIT "B"

MUD PROGRAM

0 - 500'	To be drilled with fresh water allowing native mud to build up.
500 - 1720'	Weight 9.8-10.1, VIS 29-32, WL-no control. Drill with salt gel and paper to control seepage.
1720 - 2370'	Weight 9.8-10.1, VIS 35-39, WL-no control. Drill with salt gel and allow viscosity to build up. Sweep hole with viscous pill before logging.
2370 - 4890'	Weight 9.7-10, VIS 29-30, WL-no control. Drill out of 8 5/8" casing with existing system. Start mudding up 150' above Abo.
4890 - 6300'	Weight 9.7-10, VIS 38, WL-10-20 cc, Oil-6%. 150' above the Abo formation build viscosity up 38. Add starch to bring water loss down to 10-20 cc. Add diesel fuel to bring oil content up to 6%.
6300 - TD	Weight 9.5-10, VIS 38, WL 10-20 cc, Oil 4-6%. Drill with same fluid but let oil content drop to 4-6% before any DST's or logging activity, bring water loss down to 10 cc and VIS up to 40.

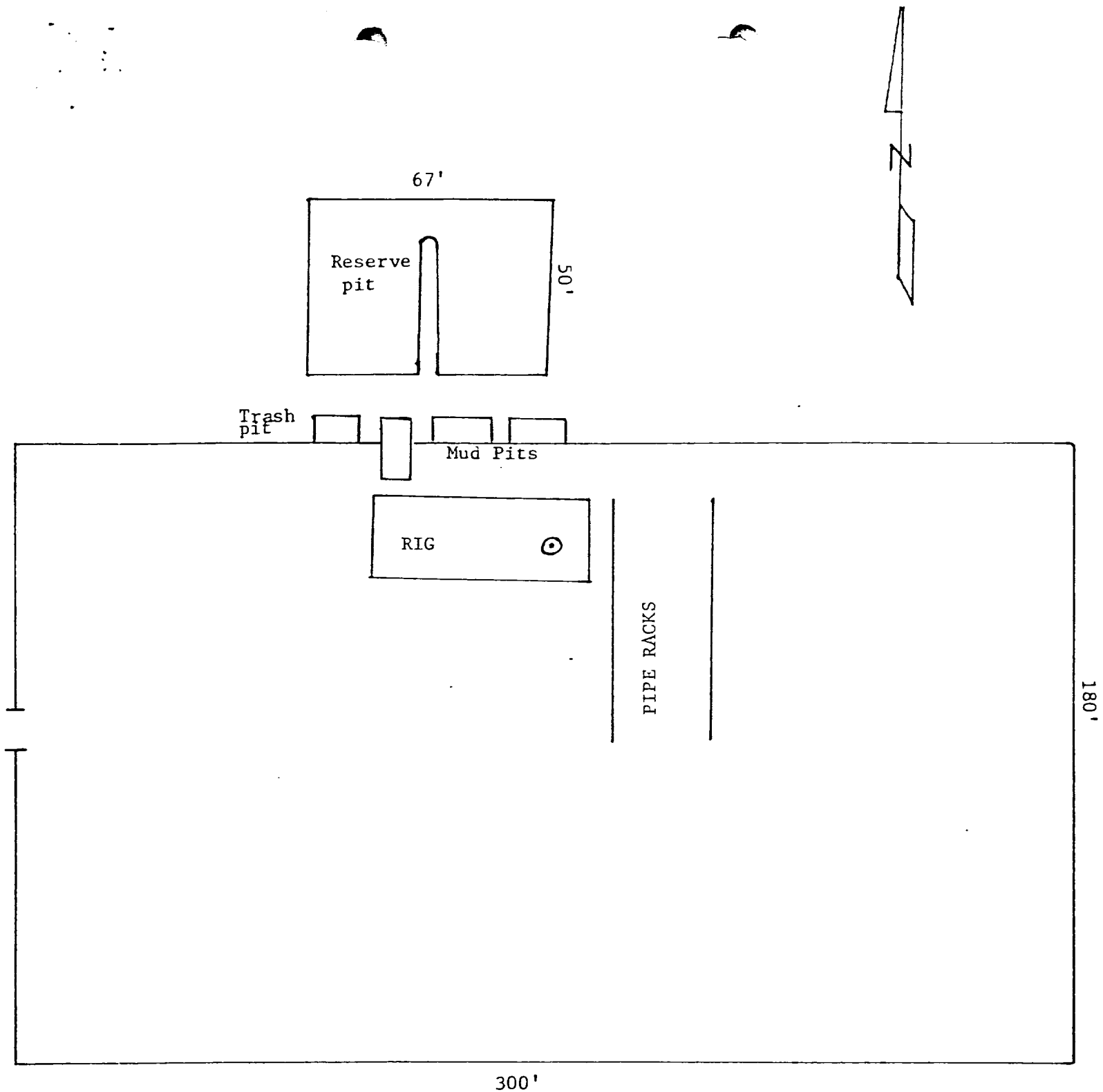




Township 9S

Agua Negra #2
Exhibit D

== Existing Roads
 == Road to be Constructed
 ---- El Paso Nat. Gas P.



AGUA NEGRA #1

EXHIBIT "E"