

UNITED STATES  
DEPARTMENT OF THE INTERIOR  
GEOLOGICAL SURVEYNM OIL CO. COMMISSION 30-005-61497  
Artesia, NM 88210

5. LEASE DESIGNATION AND NO.

NM 9539

6. IF INDIAN, ALLOTTEE OR TRIBE NAME

MAR 23 1982

7. UNIT AGREEMENT NAME

D.

8. FARM OR LEASE NAME OFFICE

Williamson LC Federal

9. WELL NO.

7

10. FIELD AND POOL, OR WILDCAT

Undes. Pecos Slope Abo

11. SEC., T., R., M., OR BLK.  
AND SURVEY OR AREA

Sec. 4-T8S-R25E

12. COUNTY OR PARISH

Chaves

13. STATE

NM

## 1a. TYPE OF WORK

DRILL ☒DEEPEN ☐PLUG BACK ☐

## b. TYPE OF WELL

OIL  
WELL ☐GAS  
WELL ☒

OTHER

SINGLE  
ZONE ☐MULTIPLE  
ZONE ☐

## 2. NAME OF OPERATOR

Yates Petroleum Corporation ✓

## 3. ADDRESS OF OPERATOR

207 S. 4th Street, Artesia, New Mexico 88210

## 4. LOCATION OF WELL (Report location clearly and in accordance with any State requirements.)\*

At surface 660' FSL &amp; 660' FWL

At proposed prod. zone  
same 810'

## 14. DISTANCE IN MILES AND DIRECTION FROM NEAREST TOWN OR POST OFFICE

18 miles NNE of Roswell, NM.

## 15. DISTANCE FROM PROPOSED\*

LOCATION TO NEAREST  
PROPERTY OR LEASE LINE, FT.  
(Also to nearest drlg. unit line, if any)

660'

## 16. NO. OF ACRES IN LEASE

1480

17. NO. OF ACRES ASSIGNED  
TO THIS WELL

160

18. DISTANCE FROM PROPOSED LOCATION\*  
TO NEAREST WELL, DRILLING, COMPLETED,  
OR APPLIED FOR, ON THIS LEASE, FT.

## 19. PROPOSED DEPTH

4200'

## 20. ROTARY OR CABLE TOOLS

Rotary

## 21. ELEVATIONS (Show whether DF, RT, GR, etc.)

3597.1 GL

## 22. APPROX. DATE WORK WILL START\*

ASAP

## 23.

## PROPOSED CASING AND CEMENTING PROGRAM

SIZE OF HOLE	SIZE OF CASING	WEIGHT PER FOOT	SETTING DEPTH	QUANTITY OF CEMENT
14 3/4"	10 3/4"	48# J-55	975'	800' sx circulated
7 7/8"	4 1/2"	9.5#	TD	450 sx

We propose to drill and test the Abo and intermediate formations. Approximately 975' of surface casing will be set and cement circulated to shut off gravel and caving. If needed (lost circulation) 8 5/8" intermediate casing will be run to 1500' and cemented with enough cement calculated to tie back into the surface casing. Temperature survey will be run to determine cement top. If commercial, production casing will be run and cemented with adequate cover, perforate, and stimulate as needed for production.

MUD PROGRAM: FW gel and LCM to 975', KCL-starch to 3500', Brine & KCL to TD.

BOP PROGRAM: BOP's will be installed at the offset and tested daily.

GAS NOT DEDICATED.

IN ABOVE SPACE DESCRIBE PROPOSED PROGRAM: If proposal is to deepen or plug back, give data on present productive zone and proposed new productive zone. If proposal is to drill or deepen directionally, give pertinent data on subsurface locations and measured and true vertical depths. Give blowout preventer program, if any.

SIGNED

TITLE Regulatory Manager

DATE 2/26/82

(This space for Federal or State office use)

PERMIT NO.

APPROVED

APPROVAL DATE

APPROVED BY

(Orig. Sgd.) ROGER A. CHAPMAN

TITLE

APPROVAL SUBJECT TO  
GENERAL REQUIREMENTS AND  
SPECIAL STIPULATIONS  
ATTACHED

DATE

CONDITIONS OF APPROVAL

MAR 19 1982

FOR

JAMES A. GILLHAM  
DISTRICT SUPERVISORPosted ID  
API + NL Book  
3-26-82

NEW MEXICO OIL CONSERVATION COMMISSION  
 L LOCATION AND ACREAGE DEDICATION PLAT

Form C-102  
 Supersedes C-128  
 Effective 1-1-65

All distances must be from the outer boundaries of the Section.

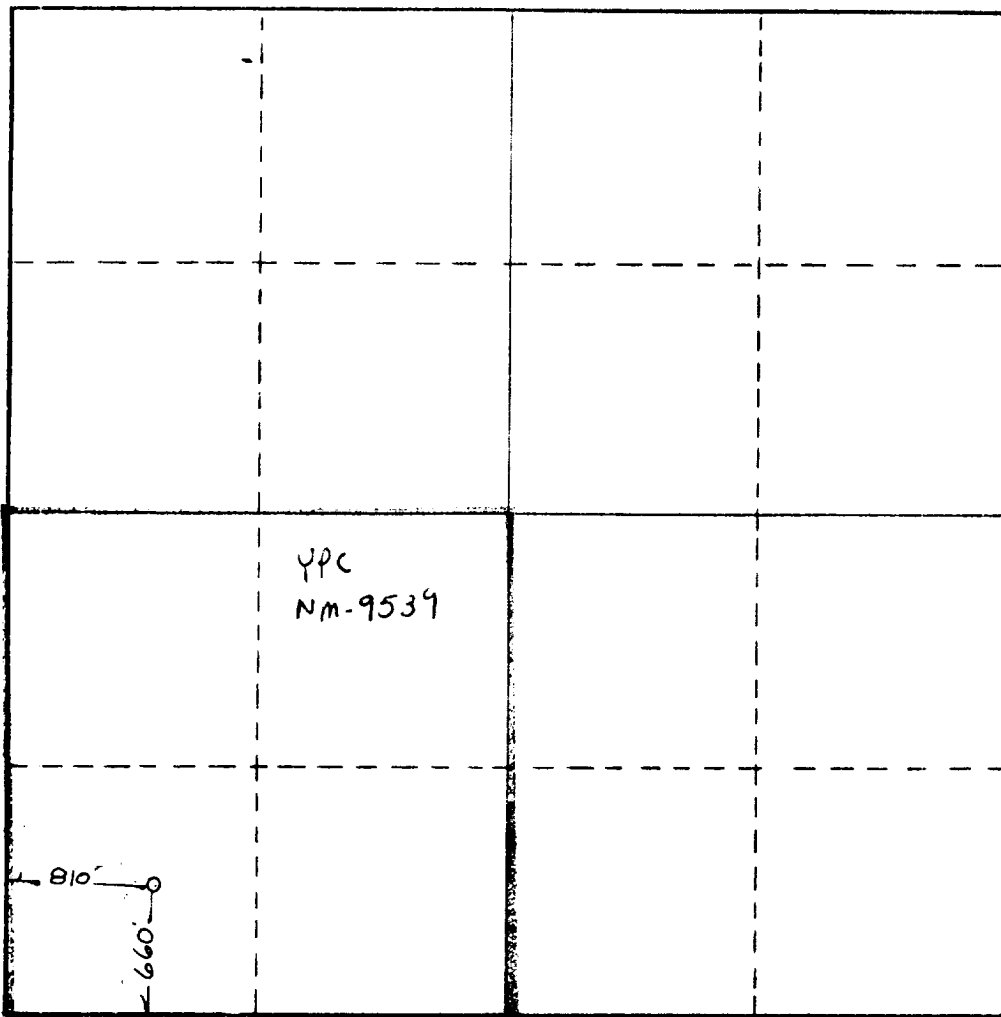
Operator YATES PETROLEUM CORPORATION		Lease Williamson "LC" Federal			Well No. 7
Unit Letter M	Section 4	Township 8 South	Range 25 East	County Chaves	
Actual Footage Location of Well: 660' feet from the South line and 810' feet from the West line					
Ground Level Elev. 3578'	Producing Formation Abo		Pool Undes. Pecos Slope Abo	Dedicated Acreage: 160 Acres	

1. Outline the acreage dedicated to the subject well by colored pencil or hachure marks on the plat below.
2. If more than one lease is dedicated to the well, outline each and identify the ownership thereof (both as to working interest and royalty).
3. If more than one lease of different ownership is dedicated to the well, have the interests of all owners been consolidated by communitization, unitization, force-pooling, etc?

☐ Yes ☐ No If answer is "yes," type of consolidation \_\_\_\_\_

If answer is "no," list the owners and tract descriptions which have actually been consolidated. (Use reverse side of this form if necessary.) \_\_\_\_\_

No allowable will be assigned to the well until all interests have been consolidated (by communitization, unitization, forced-pooling, or otherwise) or until a non-standard unit, eliminating such interests, has been approved by the Commission.



CERTIFICATION

I hereby certify that the information contained herein is true and complete to the best of my knowledge and belief.

*Gliserio Rodriguez*  
 Name

Gliserio Rodriguez  
 Position

Regulatory Manager  
 Company

Yates Petroleum Corporation  
 Date

3/8/82

I hereby certify that the well location shown on this plat was placed from field notes, actual survey, or made by me or under my supervision, and that the same is true and correct to the best of my knowledge and belief.

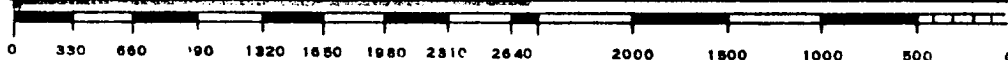


Date Surveyed

March 7, 1982

Registered Professional Engineer and/or Land Surveyor

*Gliserio Rodriguez*  
 Certificate No.



UNITED STATES  
DEPARTMENT OF THE INTERIOR  
GEOLOGICAL SURVEY

SUNDRY NOTICES AND REPORTS ON WELLS

(Do not use this form for proposals to drill or to deepen or plug back to a different reservoir. Use Form 9-331-C for such proposals.)

1. oil well ☐ gas well ☒ other

2. NAME OF OPERATOR

Yates Petroleum Corporation

3. ADDRESS OF OPERATOR

207 S. 4th, Artesia, New Mexico 88210

4. LOCATION OF WELL (REPORT LOCATION CLEARLY. See space 17 below)

660' FSL and 810' FWL

AT SURFACE:

AT TOP PROD. INTERVAL:

AT TOTAL DEPTH: same

16. CHECK APPROPRIATE BOX TO INDICATE NATURE OF NOTICE, REPORT, OR OTHER DATA

REQUEST FOR APPROVAL TO:

TEST WATER SHUT-OFF ☐

FRACTURE TREAT ☐

SHOOT OR ACIDIZE ☐

REPAIR WELL ☐

PULL OR ALTER CASING ☐

MULTIPLE COMPLETE ☐

CHANGE ZONES ☐

ABANDON\* ☐

(other) change plat ☐

SUBSEQUENT REPORT OF:

RECEIVED  
MAR 15 1982

OIL & GAS  
U.S. GEOLOGICAL SURVEY  
ROSWELL, NEW MEXICO

17. DESCRIBE PROPOSED OR COMPLETED OPERATIONS (Clearly state all pertinent details, and give pertinent dates, including estimated date of starting any proposed work. If well is directionally drilled, give subsurface locations and measured and true vertical depths for all markers and zones pertinent to this work.)\*

Due to archaeological findings on previously proposed location (660' FSL and 660' FWL) archaeologist requested location be moved 150' to the east.

New plat attached.

NM OIL CONS. COMMISSION

Draw DD

Artesia, NM 88210

Budget Bureau No. 42-R1424

RECEIVED

5. LEASE  
NM 9539

6. IF INDIAN, ALLOTTEE OR TRIBE NAME MAR 23 1982

7. UNIT AGREEMENT NAME  
O. C. D.  
ARTESIA, OFFICE

8. FARM OR LEASE NAME  
Williamson "LC" Federal

9. WELL NO.  
7

10. FIELD OR WILDCAT NAME  
Undes. Pecos Slope Abo

11. SEC., T., R., M., OR BLK. AND SURVEY OR AREA  
Sec. 4-T8S-R25E

12. COUNTY OR PARISH  
Chaves

13. STATE  
NM

14. API NO.

15. ELEVATIONS (SHOW DF, KDB, AND WD)  
3597.1 GL

(NOTE: Report results of multiple completion or zone change on Form 9-330.)

Subsurface Safety Valve: Manu. and Type

Set @ Ft.

18. I hereby certify that the foregoing is true and correct

SIGNED

ACCEPTED FOR RECORD

ROGER A. CHAPMAN

TITLE Regulatory Secy. DATE 3/12/82

(This space for Federal or State office use)

APPROVED BY

CONDITIONS OF APPROVAL IF ANY

MAR 19 1982

U.S. GEOLOGICAL SURVEY  
ROSWELL, NEW MEXICO

\*See Instructions on Reverse Side

NEW MEXICO OIL CONSERVATION COMMISSION  
WELL LOCATION AND ACREAGE DEDICATION PLAT

Form C-102  
Supersedes C-128  
Effective 1-1-65

All distances must be from the outer boundaries of the Section.

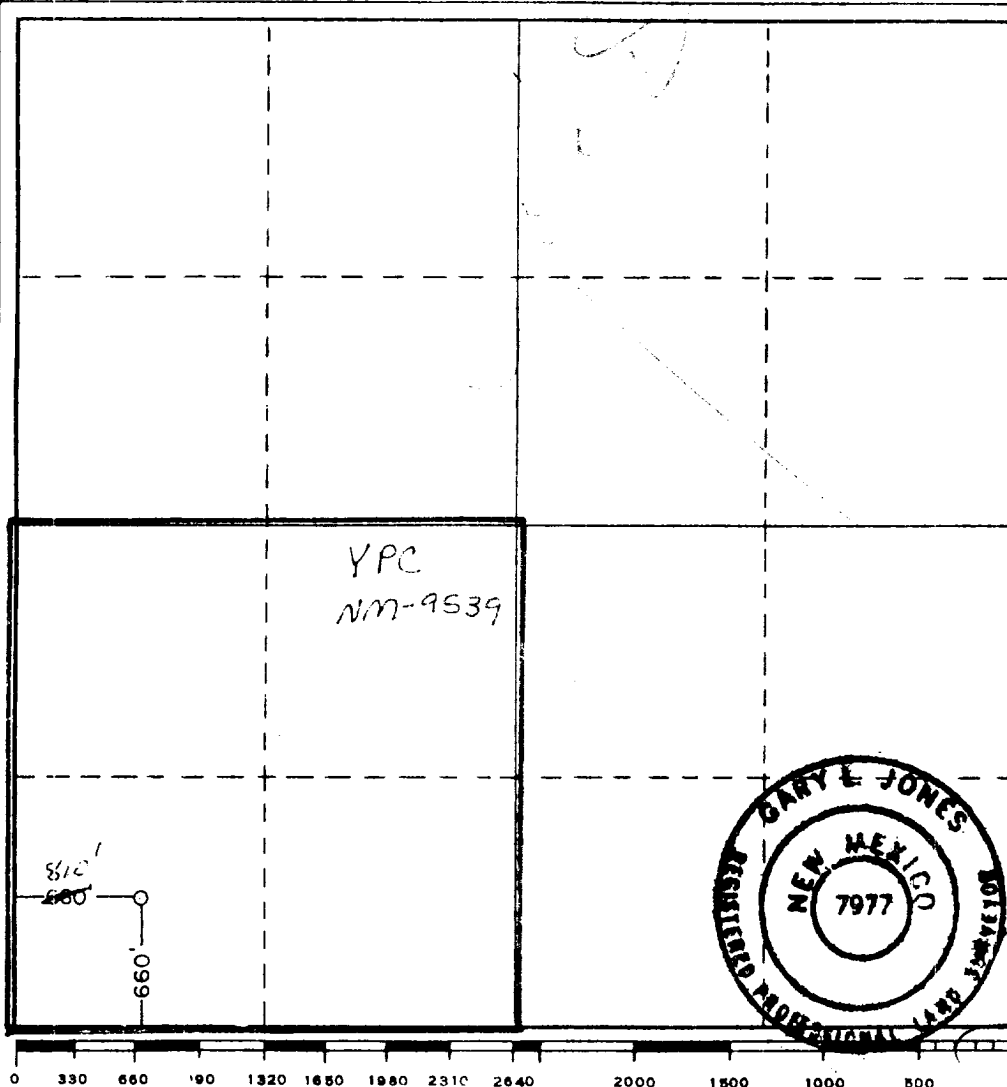
Operator <b>YATES PETROLEUM CORPORATION</b>			Lease <b>Williamson LC Federal</b>		Well No. <b>7</b>
Unit Letter <b>M</b>	Section <b>4</b>	Township <b>8 South</b>	Range <b>25 East</b>	County <b>Chaves</b>	
Actual Footage Location of Well: <b>660</b> feet from the <b>South</b> line and <b>810'</b> <del>660</del> feet from the <b>West</b> line					
Ground Level Elev. <b>3579.1'</b>	Producing Formation <b>Abo</b>		Pool <b>Undes. Pecos Slope Abo</b>	Dedicated Acreage: <b>160</b> Acres	

1. Outline the acreage dedicated to the subject well by colored pencil or hachure marks on the plat below.
2. If more than one lease is dedicated to the well, outline each and identify the ownership thereof (both as to working interest and royalty).
3. If more than one lease of different ownership is dedicated to the well, have the interests of all owners been consolidated by communitization, unitization, force-pooling, etc?

☐ Yes ☐ No If answer is "yes," type of consolidation \_\_\_\_\_

If answer is "no," list the owners and tract descriptions which have actually been consolidated. (Use reverse side of this form if necessary.) \_\_\_\_\_

No allowable will be assigned to the well until all interests have been consolidated (by communitization, unitization, forced-pooling, or otherwise) or until a non-standard unit, eliminating such interests, has been approved by the Commission.



CERTIFICATION

I hereby certify that the information contained herein is true and complete to the best of my knowledge and belief.

Name Gliserio Rodriguez  
Position Regulatory Manager  
Company Yates Petroleum Corporation  
Date 2/18/82

I hereby certify that the well location shown on this plat was plotted from field notes of actual surveys made by me or under my supervision, and that the same is true and correct to the best of my knowledge and belief.

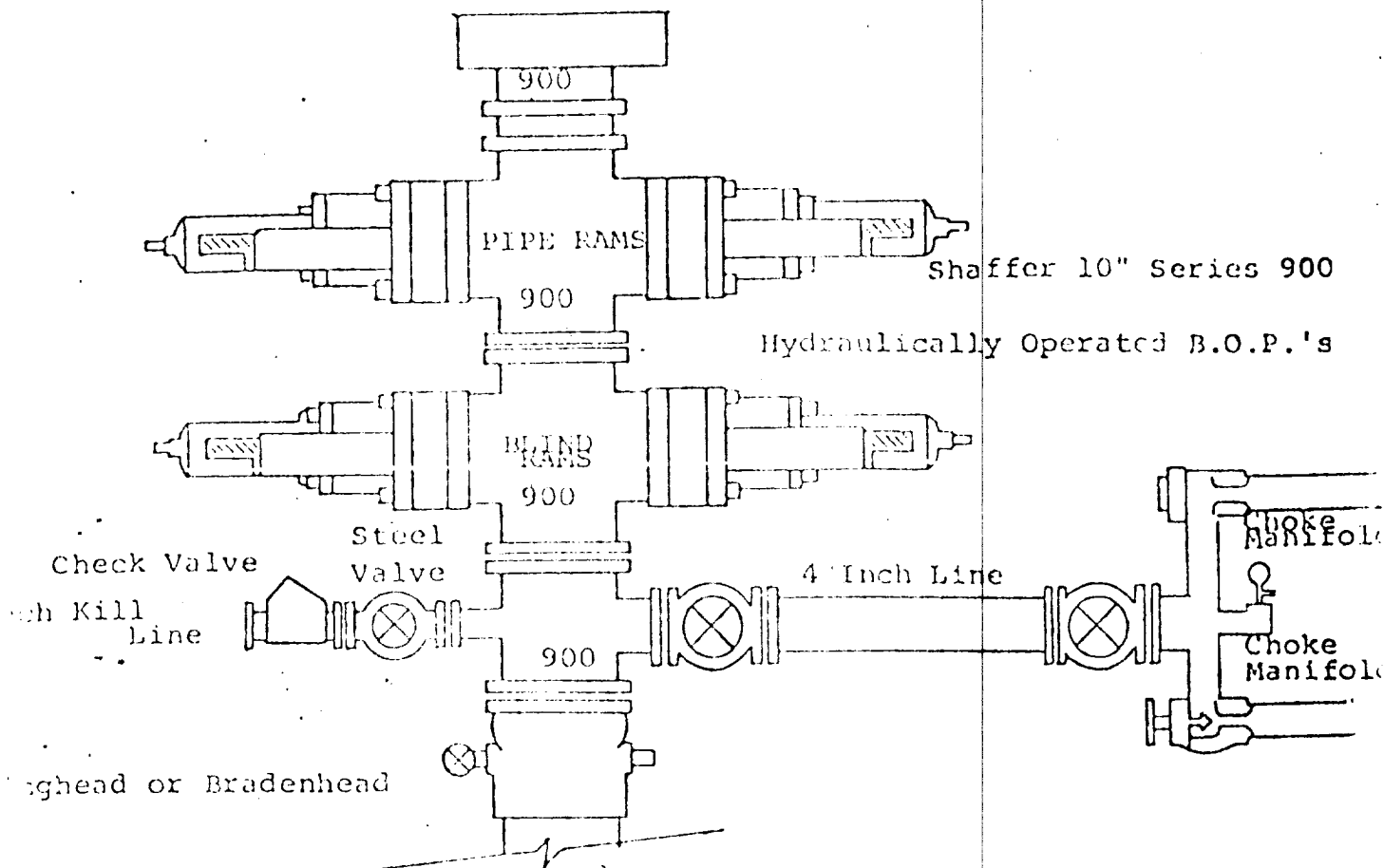
Date Surveyed 2/11/82  
Registered Professional Engineer  
and/or Land Surveyor  
[Signature]  
Certificate No. 7977

Williamson "LC" Federal #7  
660' FSL and 660' FWL  
Section 4-T8S-R25E  
Chaves County, New Mexico

In conjunction with Form 9-331C, Application for Permit to Drill subject well, Yates Petroleum Corporation submits the following ten items of pertinent information in accordance with USGS requirements.

1. The geologic surface formation is sandy alluvium.
2. The estimated tops of geologic markers are as follows:

San Andres	400'
Glorieta	1367'
Fullerton	2806'
Abo	3474'
TD	4200'
3. The estimated depths at which anticipated water, oil or gas formations are expected to be encountered:  
  
Water: approximately 260' - 330'  
  
Oil or Gas: Abo 3500'
4. Proposed Casing Program: See Form 9-331C.
5. Pressure Control Equipment: See Form 9-331C and Exhibit B.
6. Mud Program: See Form 9-331C.
7. Auxiliary Equipment: Kelly Cock; pit level indicators and flow sensor equipment; sub with full-opening valve on floor, drill pipe connection.
8. Testing, Logging and Coring Program:  
  
Samples: Surface casing to TD.  
DST's: As warranted  
Coring: CNL-FDC TD to casing w/GR-CNL on to surface, DLL from TD to csg. w/RxO  
Logging: None anticipated
9. No abnormal pressures or temperatures are anticipated.
10. Anticipated starting date: As soon as possible after approval.



#### FOLLOWING CONSTITUTE MINIMUM BLOWOUT PREVENTER REQUIREMENTS

All preventers to be hydraulically operated with secondary manual control installed prior to drilling out from under casing.

Choke outlet to be a minimum of 4" diameter.

Kill line to be of all steel construction of 2" minimum diameter.

All connections from operating manifolds to preventers to be all steel.

Hole or tube a minimum of one inch in diameter.

The available closing pressure shall be at least 15% in excess of that required with sufficient volume to operate the B.O.P.'s.

All connections to and from preventer to have a pressure rating equivalent to that of the B.O.P.'s.

Inside blowout preventer to be available on rig floor.

Operating controls located a safe distance from the rig floor.

Hole must be kept filled on trips below intermediate casing. Operator not responsible for blowouts resulting from not keeping hole full.

D. P. float must be installed and used below zone of first gas intrusion.

Exhibit C

# YATES PETROLEUM CORPORATION

