

UNITED STATES  
DEPARTMENT OF THE INTERIOR

## GEOLOGICAL SURVEY

## APPLICATION FOR PERMIT TO DRILL, DEEPEN, OR PLUG BACK

## 1a. TYPE OF WORK

DRILL ☒DEEPEN ☐PLUG BACK ☐

## b. TYPE OF WELL

OIL  
WELL ☐GAS  
WELL ☒

OTHER

SINGLE  
ZONE ☐MULTIPLE  
ZONE ☐

## 2. NAME OF OPERATOR

Stevens Operating Corporation (phone 505-622-7273)

## 3. ADDRESS OF OPERATOR

P. O. Box 2408, Roswell, NM 88201

## 4. LOCATION OF WELL (Report location clearly and in accordance with any State requirements.)\*

At surface

810 FSL 990 FEL, Sec 20, T7S, R26E

At proposed prod. zone

same

## 14. DISTANCE IN MILES AND DIRECTION FROM NEAREST TOWN OR POST OFFICE\*

23.6 air miles northeast of Roswell, New Mexico

## 15. DISTANCE FROM PROPOSED\*

LOCATION TO NEAREST  
PROPERTY OR LEASE LINE, FT.  
(Also to nearest drlg. unit line, if any)

660'

## 16. NO. OF ACRES IN LEASE

1160

18. DISTANCE FROM PROPOSED LOCATION\*  
TO NEAREST WELL, DRILLING, COMPLETED,  
OR APPLIED FOR, ON THIS LEASE, FT.

1600'

## 19. PROPOSED DEPTH

4300 Abo

## 21. ELEVATIONS (Show whether DF, RT, GR, etc.)

3571.7 GR

## 23.

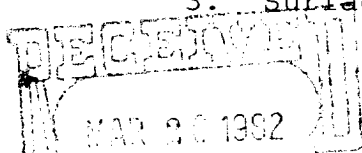
## PROPOSED CASING AND CEMENTING PROGRAM

SIZE OF HOLE	SIZE OF CASING	WEIGHT PER FOOT	SETTING DEPTH	QUANTITY OF CEMENT
11"	8 5/8"	24.0#	900'	Sufficient to circulate
7 7/8"	4 1/2"	10.5#	4300'	250 sacks

After setting and cementing production string, pay zones will be perforated and stimulated as needed for production.

Attached are:

1. Well Location and Acreage Dedication Plat
2. Supplemental Drilling Data
3. Surface Use Plan



505 AIO + DEDICATED

OIL & GAS  
U.S. GEOLOGICAL SURVEY  
ROSWELL, NEW MEXICO

IN ABOVE SPACE DESCRIBE PROPOSED PROGRAM: If proposal is to deepen or plug back, give data on present productive zone and proposed new productive zone. If proposal is to drill or deepen directionally, give pertinent data on subsurface locations and measured and true vertical depths. Give blowout preventer program, if any.

24.

SIGNED

Pat Thompson

TITLE

Prod. Coordinator

DATE

3/25/82

(This space for Federal or State office use)

PERMIT NO.

APPROVAL DATE

APPROVED BY

APPROVED

S. C. GEORGE H. STEIN

CONDITIONS OF APPROVAL, IF ANY:

DATE

APR 9 1982

FOR

JAMES A. GRIMM  
DISTRICT SUPERVISOR

\*See Instructions On Reverse Side

NEW MEXICO OIL CONSERVATION COMMISSION  
WELL LOCATION AND ACREAGE DEDICATION PLAT

Form C-102  
Supersedes C-28  
Effective 1-1-85

All distances must be from the outer boundaries of the Section

Stevens Operating Co.			Lease Sun Fed.		Well No. 4
Section P	20	Township 7 South	Range 26 East	County Chaves	
Location of well:					
810	feet from the	South	line and	990	feet from the East line
Producing Form. Elev. 5778.0	Producing Formation Abo		Pool Undesignated		Dedicated Acreage: 160 Acres

Outline the acreage dedicated to the subject well by colored pencil or hachure marks on the plat below.

2 If more than one lease is dedicated to the well, outline each and identify the ownership thereof (both as to working interest and royalty).

3 If more than one lease of different ownership is dedicated to the well, have the interests of all owners been consolidated by communitization, unitization, force-pooling, etc?

☐ Yes ☐ No If answer is "yes," type of consolidation \_\_\_\_\_

If answer is "no," list the owners and tract descriptions which have actually been consolidated (Use reverse side of this form if necessary.) \_\_\_\_\_

No allowable will be assigned to the well until all interests have been consolidated (by communitization, unitization, force-pooling, or otherwise) or until a non-standard unit, eliminating such interests, has been approved by the Commission.

CERTIFICATION

I hereby certify that the information contained herein is true and complete to the best of my knowledge and belief.

*Pat Thompson*  
Name Pat Thompson

Position Production Coordinator

Company Stevens Operating Corporation

Date 3/24/82

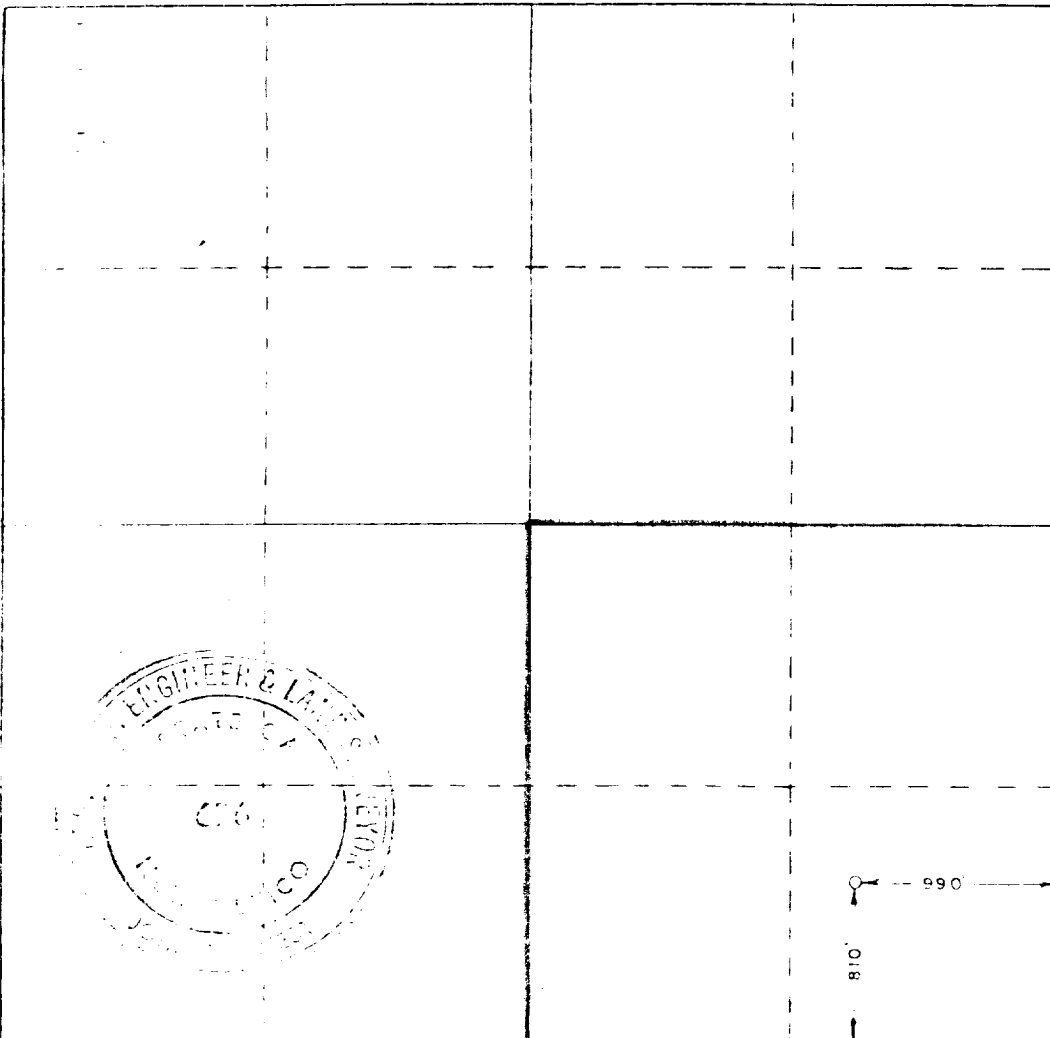
I hereby certify that the well location shown on this plat was plotted from field notes of actual surveys made by me or under my supervision, and that the same is true and correct to the best of my knowledge and belief.

Date Surveyed 3/12/82

Registered Professional Engineer and/or Land Surveyor

*John W. West*

Certificate No. JOHN W. WEST 678  
PATRICK A. ROMERO 6888  
Ronald J. Eidson 3229



SUPPLEMENTAL DRILLING DATA

STEVENS OPERATING CORPORATION  
WELL # 4 SUN FEDERAL  
810' FSL, 990' FEL, SEC. 20 , T7S, R26E  
CHAVES COUNTY, NEW MEXICO

1. SURFACE INFORMATION: Permian (Artesia Group).

2. ESTIMATED TOPS OF GEOLOGIC MARKERS:

Queen	150'	Glorietta	1800'
San Andres	600'	Abo	3850'

3. ANTICIPATED POROSITY ZONES:

Water	60'
Oil	1100'
Gas	3950'

4. CASING DESIGN:

<u>Size</u>	<u>Interval</u>	<u>Weight</u>	<u>Grade</u>	<u>Joint</u>	<u>Condition</u>
8 5/8"	0 - 900'	24.0#	K-55	STC	New
4 1/2"	0 - 4300'	9.5#	K-55	STC	New

5. SURFACE CONTROL EQUIPMENT: A double ram-type preventer (900 series). A sketch of BOP stack is attached.

6. CIRCULATING MEDIUM:

0 - 900'	Fresh water mud with gel added if needed for viscosity
900 - TD	Salt water mud, conditioned as necessary for control of viscosity and water loss.

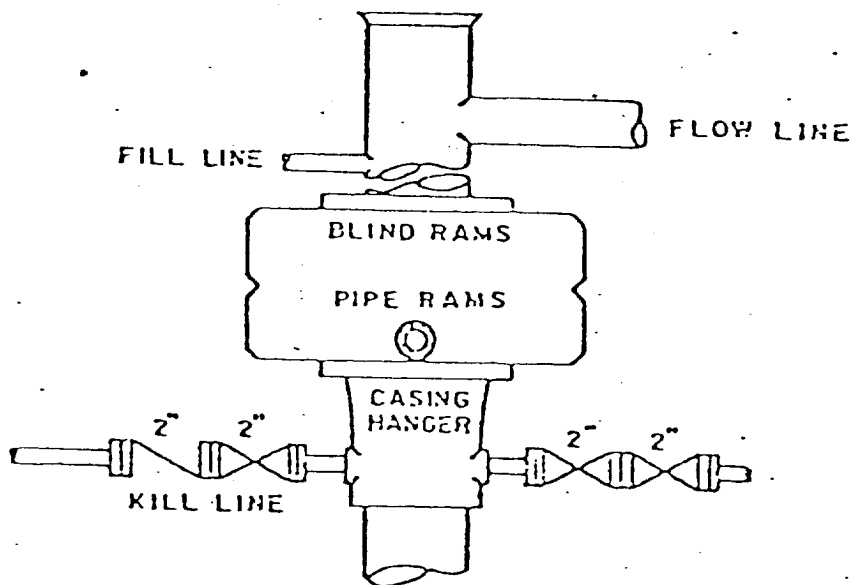
7. AUXILIARY EQUIPMENT: Drill string safety valve.

8. TESTING, LOGGING AND CORING PROGRAMS:

DST's:	As warranted.
Coring:	None Planned.
Logging:	A compensated Neutron/Formation Density Log w/Gamma Ray and a Dual Laterolog/Micro-Spherically Focused Log.

9. ABNORMAL PRESSURES, TEMPERATURES OR GASES: None anticipated.

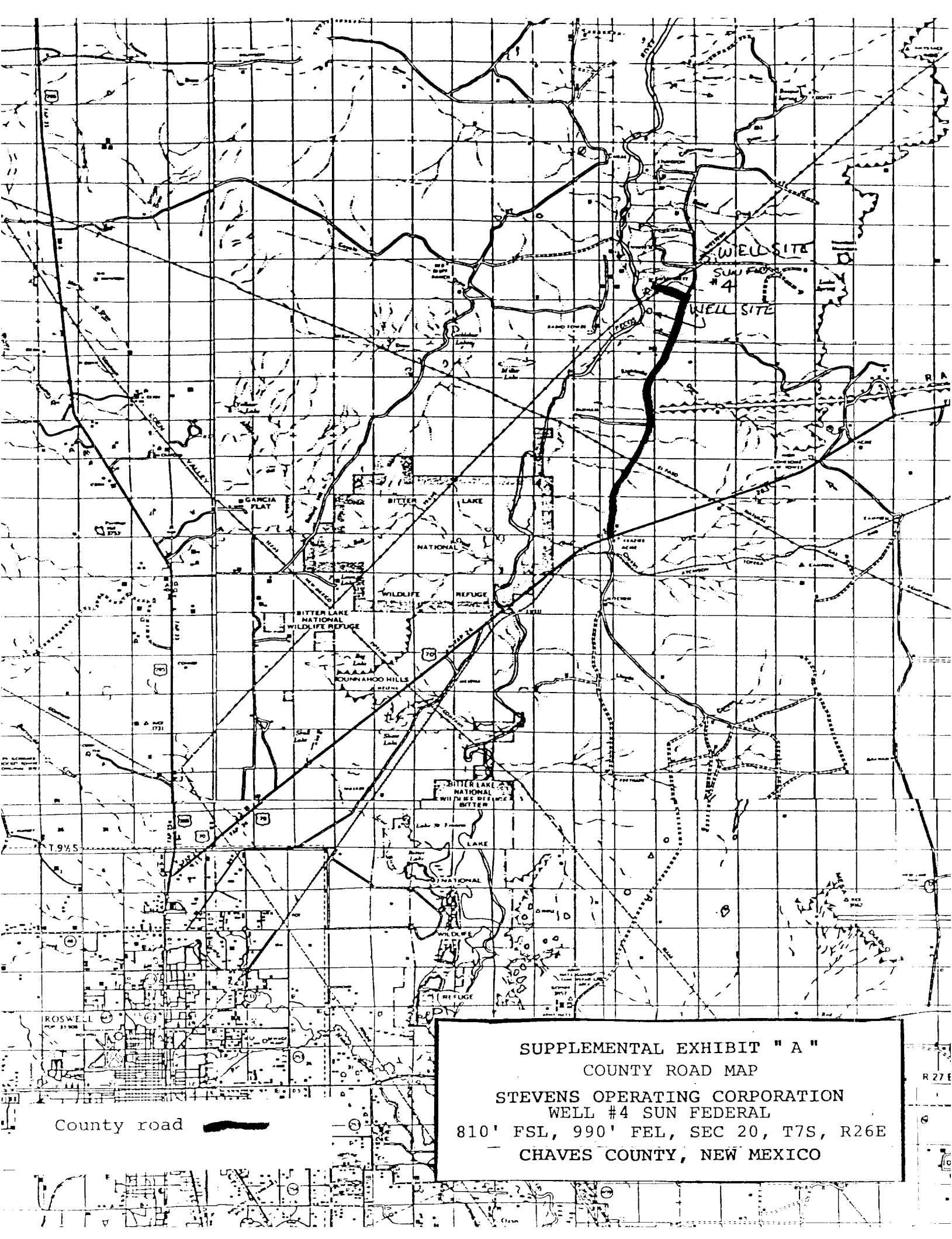
10. ANTICIPATED DATES: It is planned that drilling operations will commence about April 10 , 1982. Duration of drilling and completion operations should be 20 to 60 days.



DUAL RAM-TYPE PREVENTER

900 Series

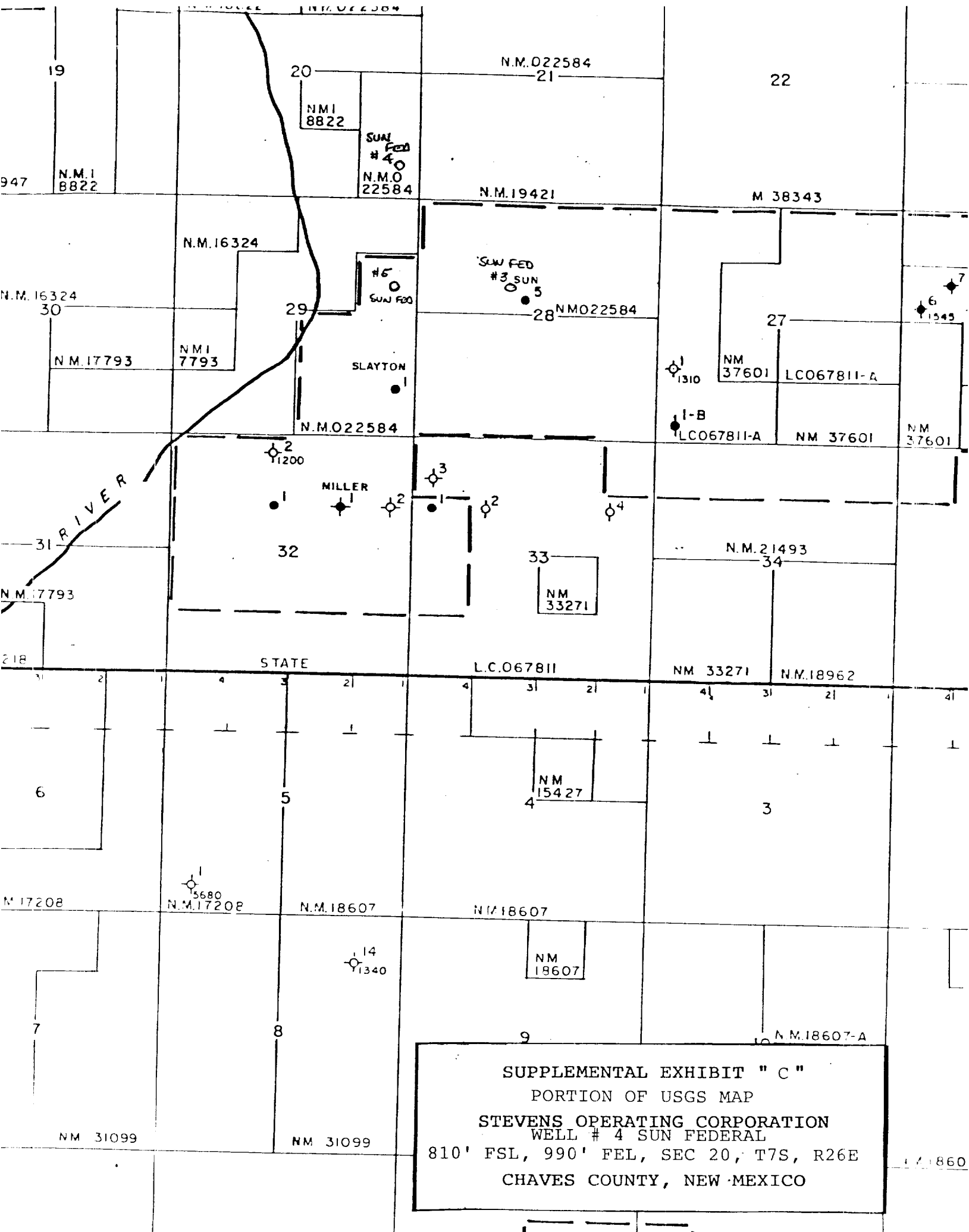
Blowout Preventer Sketch  
 Stevens Operating Corporation  
 Well #4 Sun Federal  
 810' FSL, 990' FEL, Sec. 20, T7S, R26E

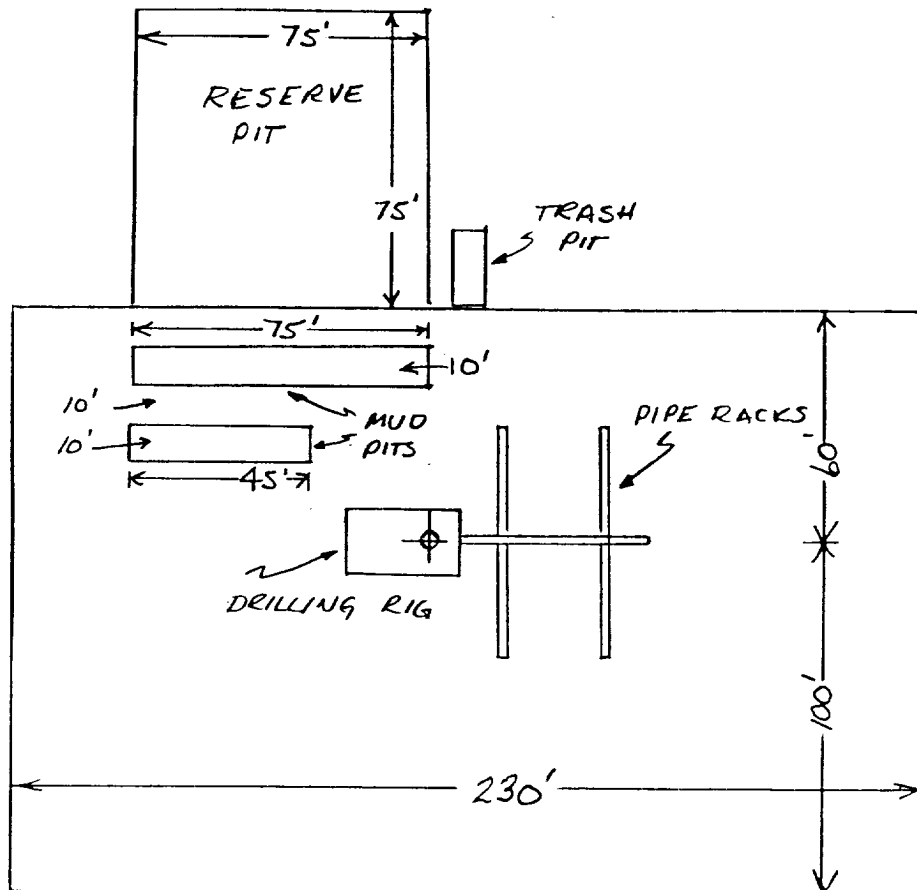


SUPPLEMENTAL EXHIBIT "A"  
COUNTY ROAD MAP

STEVENS OPERATING CORPORATION  
WELL #4 SUN FEDERAL

810' FSL, 990' FEL, SEC 20, T7S, R26E  
CHAVES COUNTY, NEW MEXICO





SUPPLEMENTAL EXHIBIT "D"  
 SKETCH OF WELL PAD  
 STEVENS OPERATING CORPORATION  
 WELL #4 SUN FEDERAL  
 810' FSL, 990' FEL, SEC 20, T7S, R26E  
 CHAVES COUNTY, NEW MEXICO