

UNITED STATES  
DEPARTMENT OF THE INTERIOR  
GEOLOGICAL SURVEY

RECEIVED

MAY 20 1982

## APPLICATION FOR PERMIT TO DRILL, DEEPEN, OR PLUG BACK

## 1a. TYPE OF WORK

DRILL ☒DEEPEN ☐

O. C. D.

PLUG BACK ☐

## b. TYPE OF WELL

OIL  
WELL ☐GAS  
WELL ☒

OTHER

ARTESIA, OFFICE

SINGLE  
ZONE ☐MULTIPLE  
ZONE ☐

## 2. NAME OF OPERATOR

JACK GRYNBERG AND ASSOCIATES

## 3. ADDRESS OF OPERATOR

1050 17th Street, Suite 1950, Denver, CO 80265

## 4. LOCATION OF WELL (Report location clearly and in accordance with any State requirements.)\*

At surface

1980' FNL and 1980' FWL of Sec. 13, T6S-R24E

At proposed prod. zone

AS ABOVE

## 14. DISTANCE IN MILES AND DIRECTION FROM NEAREST TOWN OR POST OFFICE\*

25 Miles NNE of Roswell, New Mexico

## 15. DISTANCE FROM PROPOSED\*

LOCATION TO NEAREST  
PROPERTY OR LEASE LINE, FT.  
(Also to nearest drlg. unit line, if any)

1980'

## 16. NO. OF ACRES IN LEASE

2,360.00

17. NO. OF ACRES ASSIGNED  
TO THIS WELL

160

## 18. DISTANCE FROM PROPOSED LOCATION\*

TO NEAREST WELL, DRILLING, COMPLETED,  
OR APPLIED FOR, ON THIS LEASE, FT.

Approx. 1800'

## 19. PROPOSED DEPTH

4,200'

## 20. ROTARY OR CABLE TOOLS

Rotary

## 21. ELEVATIONS (Show whether DF, RT, GR, etc.)

## 22. APPROX. DATE WORK WILL START\*

May 20, 1982

## 23.

## PROPOSED CASING AND CEMENTING PROGRAM

SIZE OF HOLE	SIZE OF CASING	WEIGHT PER FOOT	SETTING DEPTH	QUANTITY OF CEMENT
13 1/2"	10 3/4"	32.75	900'	good returns to surface, circulate
7 7/8"	4 1/2"	10.50	4,200'	500' above top of pay

1. Spud well; drill 13 1/2" hole to 900'; run 10 3/4" surface casing
2. Drill 7 7/8" hole to 4,200'; checking BOP daily
3. Run tests and logs as needed
4. Run 4 1/2" production casing to 4,200' if warranted
5. Perforate and stimulate as needed

RECEIVED  
MAY 14 1982OIL & GAS  
U.S. GEOLOGICAL SURVEY  
ROSWELL, NEW MEXICO

In the event that circulation is lost while drilling 7 7/8" hole and intermediate casing is needed, the hole will be reamed and 1,500' of 7 7/8" intermediate casing will be set.

BOP Diagram Attached - Exhibit "A"

Gas is not dedicated

Posted FD 1  
5-21-82  
API & BP  
Mace

IN ABOVE SPACE DESCRIBE PROPOSED PROGRAM: If proposal is to deepen or plug back, give data on present productive zone and proposed new productive zone. If proposal is to drill or deepen directionally, give pertinent data on subsurface locations and measured and true vertical depths. Give blowout preventer program, if any.

## 24.

SIGNED

TITLE

Land Manager

DATE

5/12/82

(This space for Federal or State office use)

(Sgd.) GEORGE H. STEIN

PERMIT NO.

APPROVAL DATE

APPROVED BY

TITLE

DATE

CONDITIONS OF APPROVAL, IF ANY:

JAMES A. GILLHAM  
DISTRICT SUPERVISOR

All distances must be from the outer boundaries of the Section.

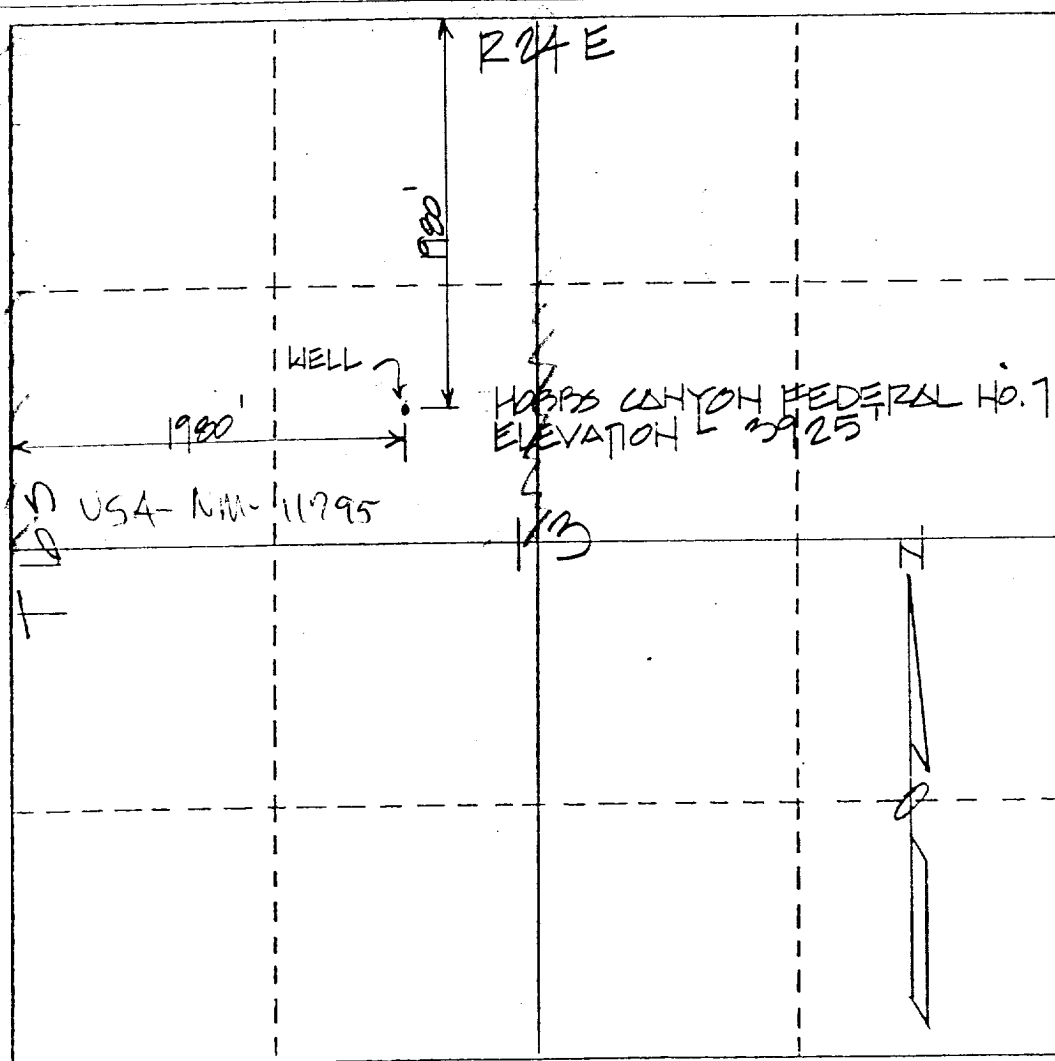
Operator <b>Jack Grynberg &amp; Associates</b>		Lease <b>Hobbs Canyon Federal</b>		Well No. <b>7</b>
Unit Letter <b>F</b>	Section <b>13</b>	Township <b>6-S</b>	Range <b>24-E</b>	County <b>Chaves</b>
Actual Postage Location of Well: <b>1980</b> feet from the <b>NORTH</b> line and <b>1980</b> feet from the <b>WEST</b> line				
Ground Level Elev. <b>3925'</b>	Producing Formation <b>ABO</b>	Pool <b>Pecos Slope ABO Gas</b>		Dedicated Acreage: <b>160</b> Acres

1. Outline the acreage dedicated to the subject well by colored pencil or hatchure marks on the plat below.
2. If more than one lease is dedicated to the well, outline each and identify the ownership thereof (both as to working interest and royalty).
3. If more than one lease of different ownership is dedicated to the well, have the interests of all owners been consolidated by communitization, unitization, force-pooling, etc?

☐ Yes ☐ No If answer is "yes," type of consolidation \_\_\_\_\_

If answer is "no," list the owners and tract descriptions which have actually been consolidated. (Use reverse side of this form if necessary.) \_\_\_\_\_

No allowable will be assigned to the well until all interests have been consolidated (by communitization, unitization, forced-pooling, or otherwise) or until a non-standard unit, eliminating such interests, has been approved by the Division.



CERTIFICATION

I hereby certify that the information contained herein is true and complete to the best of my knowledge and belief.

Name \_\_\_\_\_

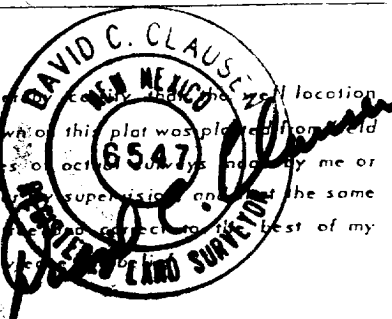
Agent  
Position \_\_\_\_\_

**Jack Grynberg & Associates**

Company \_\_\_\_\_

Date **5/14/82**

I hereby certify that the well location shown on this plat was plotted from field notes of October 1981 by me or under my supervision and that the same is true and correct to the best of my knowledge.



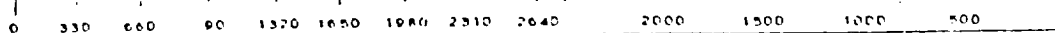
**13 May 1982**

Date Surveyed \_\_\_\_\_

Registered Professional Engineer  
and/or Land Surveyor

**David C. Clausen, P.L.S.**  
**N.M. License No. 6547**

Certificate No. \_\_\_\_\_



**TEN POINT COMPLIANCE PROGRAM**  
Attachment to Form 9-133C, Application for Permit to Drill

Jack Grynberg and Associates  
#7 Hobbs Canyon Federal  
1980' FWL and 1980' FWL  
Section 12, T 6 S - R 24 E  
Chaves County, New Mexico

1. Geologic Surface Formation  
Sandy Residium

2. Estimated Tops of Important Geologic Marker

San Andres	550'
Glorieta	1400'
ABO	3600'
TD	4200'

3. Estimated Depths of Anticipated Water, Oil, Gas or Other Minerals  
Gas 3600' - 4200'

4. Proposed Casing Program

Hole Size	Casing Size	Interval	Grade	Wt./Ft.	New or Used
13-1/2"	10-3/4"	0-900	H-40	32.75	New
7-7/8"	4-1/2"	0-4200	J-55	10.75	New
9-1/4" (contingency)	7-7/8"	0-1500	K-55	26.40	New

5. Operator's Minimum Specifications for Pressure Control  
Exhibit "A" is a schematic diagram of the blowout preventor equipment. The BOP will be hydraulically tested to the full working pressure after nipping up and after any use under pressure. Pipe rams will be operationally checked each 24 hour period, as will blind rams each time pipe is pulled out of the hole.

6. Type and Characteristic of Proposed Circulating Mediums  
Adequate stocks of sorptive agents will be on site to handle possible spills of fuel and oil on the surface. Heavier muds will be on location to be added if pressure requires.

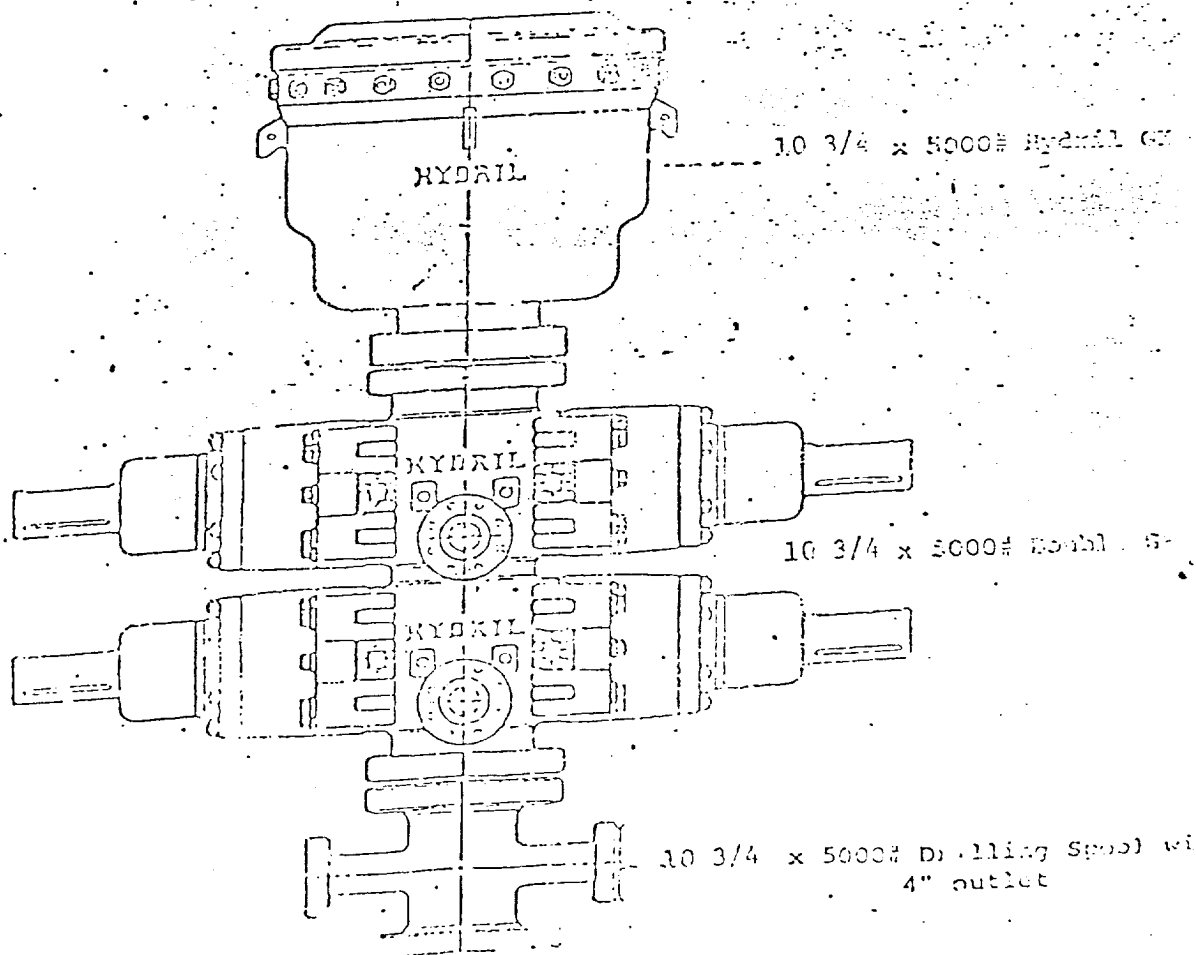
Interval	Type	Weight #/Gal.	Visc.-Sec./Qt.	Fluid Loss-CC
0-900	Native Mud	-	-	-
900-3200	Native Mud	-	-	-
3200-TD	Brine Base	10.2	32-40	20-30 CC Wtr.

7. Auxiliary Equipment  
Kelly cock, a float will be used at the bit, pit level indicators and flow sensor equipment, sub with full-opening valve on floor, drill pipe connection.
8. Testing, Logging and Coring Program
  - A. DST's as warranted.
  - B. The logging program will consist of a CML-FDC and Dual Lateral Log-MSFL.
  - C. No coring is anticipated.
  - D. Stimulation procedures will be determined after evaluation of logs.  
If treatment is indicated, appropriate Sundry Notice will be submitted.
9. Anticipated Abnormal Pressures or Temperatures  
No abnormal pressures or temperatures are anticipated.
10. The well will be spudded around May 20, 1982 or as soon as permit and surface use program are approved by M.M.S. and B.L.M.

EXHIBIT "A"

Jack Grynberg and Associates  
#7 Hobbs Canyon Federal

# BOP Stack






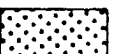
All items NPS trimmed

Date: 5-7-82 M. ETTINGER Scale: 1" = 5000'

CONTOUR INTERVAL = 10 FEET

LEGEND

EXHIBIT "D"

WELL LOCATION		C.C.G. W I
WELL DRILLED, CASING SET		100 %
LOCATION		50 %
DRY & ABANDONED		37.5 %
PRODUCING GAS WELL		25 %

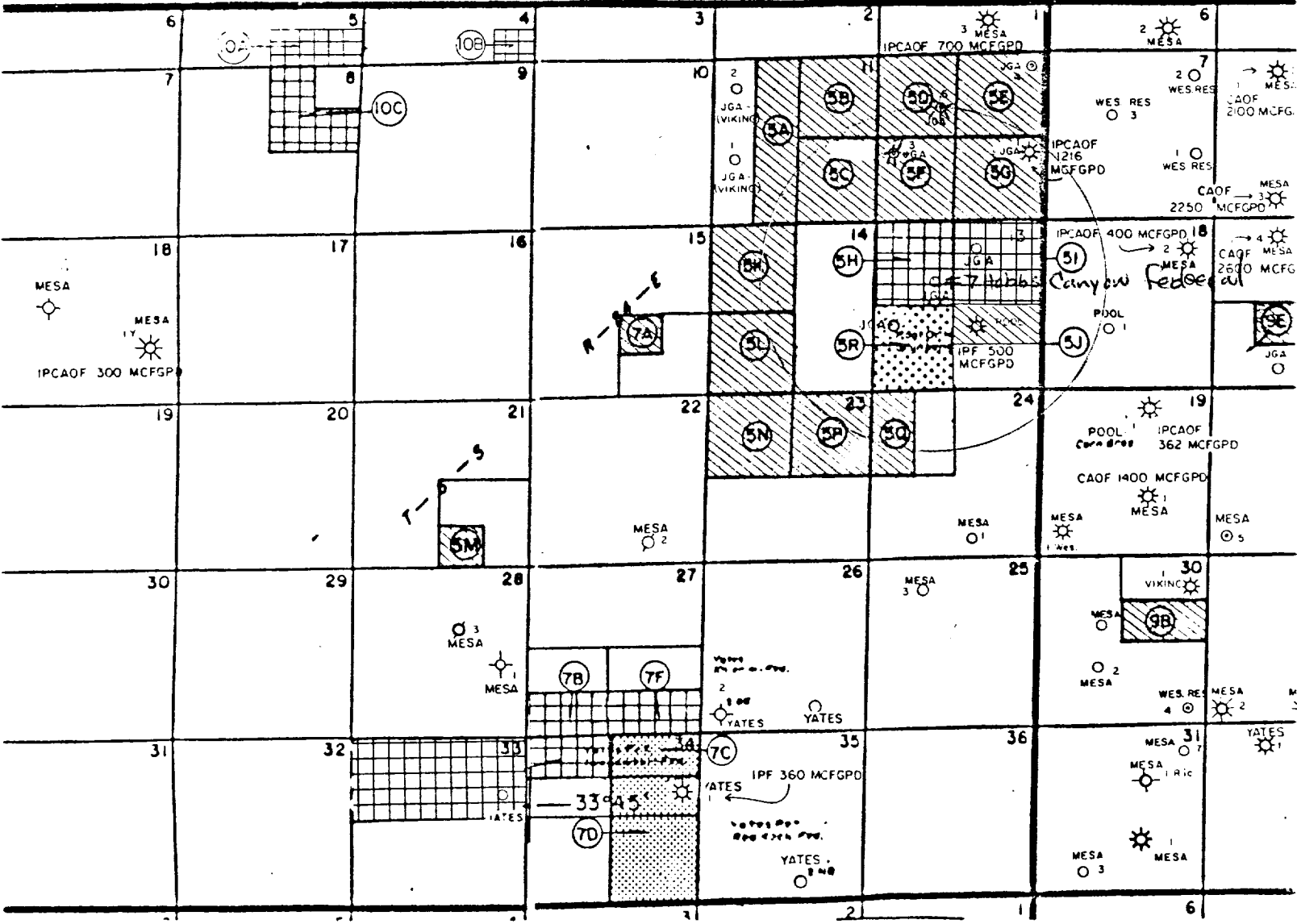
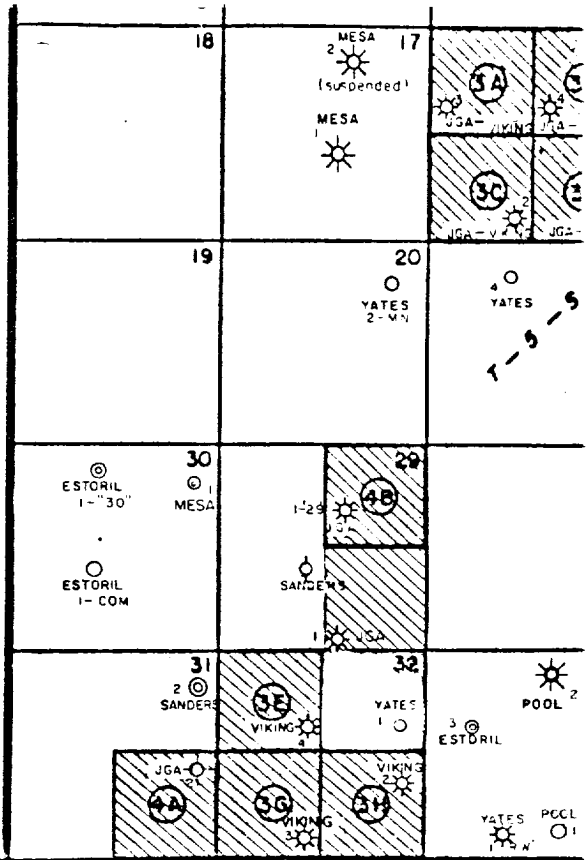


EXHIBIT "E"

JACK GRYBERG & ASSOCIATES  
# 7 Hobbs Canyon Federal

