

UNITED STATES
DEPARTMENT OF THE INTERIOR
GEOLOGICAL SURVEY

MAY 26 1982

APPLICATION FOR PERMIT TO DRILL, DEEPEN, OR PLUG BACK

1a. TYPE OF WORK

DRILL ☒DEEPEN ☐PLUG BACK ☐

b. TYPE OF WELL

OIL
WELL ☐GAS
WELL ☒

OTHER

SINGLE
ZONE ☒MULTIPLE
ZONE ☐

2. NAME OF OPERATOR

TRANSWESTERN GAS SUPPLY COMPANY ✓

3. ADDRESS OF OPERATOR

P.O. Box 2521, Houston, TX 77001

4. LOCATION OF WELL (Report location clearly and in accordance with any State requirements.)*

At surface

900' /N 660' /W Sec. 24

At proposed prod. zone
Same

14. DISTANCE IN MILES AND DIRECTION FROM NEAREST TOWN OR POST OFFICE*

27 Miles Northwest of Roswell, New Mexico

15. DISTANCE FROM PROPOSED*

LOCATION TO NEAREST
PROPERTY OR LEASE LINE, FT.
(Also to nearest drlg. unit line, if any)

900'

18. DISTANCE FROM PROPOSED LOCATION*
TO NEAREST WELL, DRILLING, COMPLETED,
OR APPLIED FOR, ON THIS LEASE, FT.

None

16. NO. OF ACRES IN LEASE

2520.00

17. NO. OF ACRES ASSIGNED
TO THIS WELL

160

19. PROPOSED DEPTH

4500' Abo

20. ROTARY OR CABLE TOOLS

Rotary

21. ELEVATIONS (Show whether DF, RT, GR, etc.)

4146' GL

22. APPROX. DATE WORK WILL START*

June 1, 1982

23.

PROPOSED CASING AND CEMENTING PROGRAM

SIZE OF HOLE	SIZE OF CASING	WEIGHT PER FOOT	SETTING DEPTH	QUANTITY OF CEMENT
17 1/2"	13 3/8"	48.0# K-55	60'	RediMix - TD to Surface
12 1/4"	8 5/8"	24.0# K-55	1800'±	± 950 sx - Circulate
7 7/8"	4 1/2"	10.5# J-55	TD	± 350 sx to Cover Abo

Amended Application

It is proposed to amend Application dated April 20, 1982
to reflect a change of location to above footage.

Propose to drill to about 4500' to test Abo and intermedi-
ate formations.

See attached "Supplemental Drilling Data".

See Exhibit "D" for BOP information.

Gas is dedicated.

IN ABOVE SPACE DESCRIBE PROPOSED PROGRAM: If proposal is to deepen or plug back, give data on present productive zone and proposed new productive zone. If proposal is to drill or deepen directionally, give pertinent data on subsurface locations and measured and true vertical depths. Give blowout preventer program, if any.

24.

SIGNED

JERRY W. LONG

TITLE Agent

DATE May 17, 1982

(This space for Federal and State office use)

PERMIT NO.

406-564 GEORGE H. STEWART

APPROVAL DATE

APPROVED BY

MAY 25 1982

TITLE

DATE

COMMITTEE FOR APPROVAL, IF ANY:

JAMES A. GILLHAM
DISTRICT SUPERVISOR

*See Instructions On Reverse Side

Filed ID-1
API & NL Book
5-28-82

All distances must be from the outer boundaries of the Section

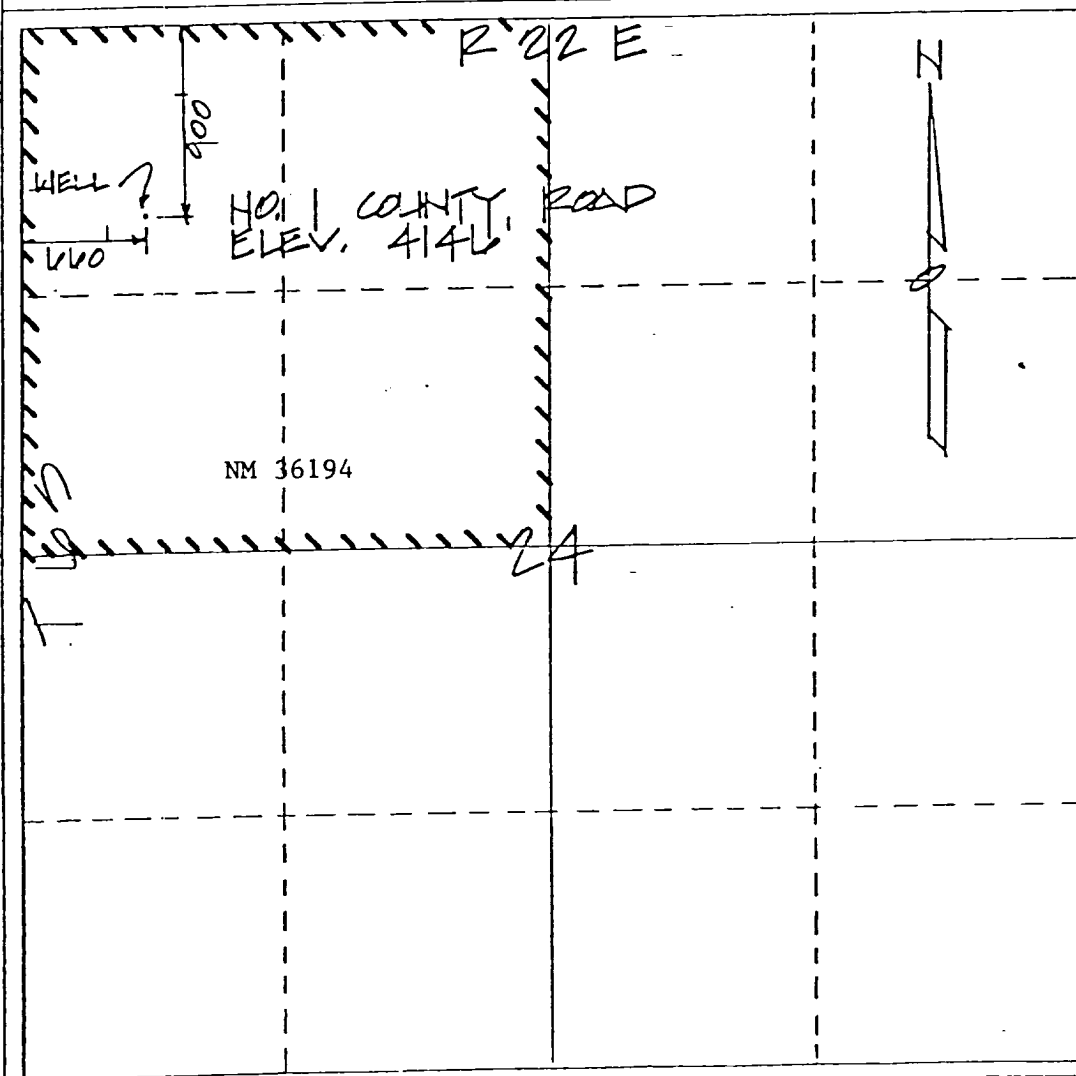
Operator TRANSWESTERN GAS SUPPLY COMPANY			Lease County Road Federal		Well No. 1
Unit Letter D	Section 24	Township 6-S	Range 22-E	County Chaves	
Actual Footage Location of Well: 900 feet from the NORTH line and 660 feet from the WEST line					
Ground Level Elev. 4146'	Producing Formation Abo	Pool Undesignated Abo		Dedicated Acreage: (NW 1/4) 160 Acres	

1. Outline the acreage dedicated to the subject well by colored pencil or hatchure marks on the plat below.
2. If more than one lease is dedicated to the well, outline each and identify the ownership thereof (both as to working interest and royalty). **Single Lease**
3. If more than one lease of different ownership is dedicated to the well, have the interests of all owners been consolidated by communitization, unitization, force-pooling, etc?

☐ Yes ☐ No If answer is "yes," type of consolidation _____

If answer is "no," list the owners and tract descriptions which have actually been consolidated. (Use reverse side of this form if necessary.) _____

No allowable will be assigned to the well until all interests have been consolidated (by communitization, unitization, forced-pooling, or otherwise) or until a non-standard unit, eliminating such interests, has been approved by the Division.



CERTIFICATION

I hereby certify that the information contained herein is true and complete to the best of my knowledge and belief.

Jerry H. Long
Name
JERRY W. LONG
Position
Agent
Company
TRANSWESTERN GAS SUPPLY CO.

Date:
May 17, 1982

I hereby certify that the well location shown on this plat was plotted from field notes of a duly qualified land surveyor or under my supervision, and that the same is true and correct to the best of my knowledge and belief.

David C. Clausen
DAVID C. CLAUSEN
N.M. LICENSED LAND SURVEYOR
6547

12 May 1982

Date Surveyed

Registered Professional Engineer
and/or Land Surveyor
David C. Clausen, P.L.S.
N.M. License No. 6547
Certificate No.

SUPPLEMENTAL DRILLING DATA

TRANSWESTERN GAS SUPPLY COMPANY
No.1 County Road Federal
900'/N 660'/W Sec.24-6S-22E
Chaves County, N.M.

NM 36194

The following items supplement Form 9-331C in accordance with instructions contained in NTL-6.

1. SURFACE FORMATION: Permian San Andres

2. ESTIMATED TOPS OF GEOLOGIC MARKERS:

San Andres	Surface
Glorieta	1150'
Tubb	2300'
Abo	2750'

3. ESTIMATED DEPTHS TO WATER, OIL OR GAS FORMATION:

Water	- Surface to 300'
Gas	- 2750' to 4500'

4. PROPOSED CASING PROGRAM:

13 3/8" Casing	- Set two joints with rat hole machine and grout to surface.
8 5/8" Casing	- Set at 1800'± and cement with an estimated 950 sx of cement. (Circulate)
4 1/2" Casing	- Set to total depth and cement with an estimated 350 sx of cement to isolate all water, oil and gas zones.

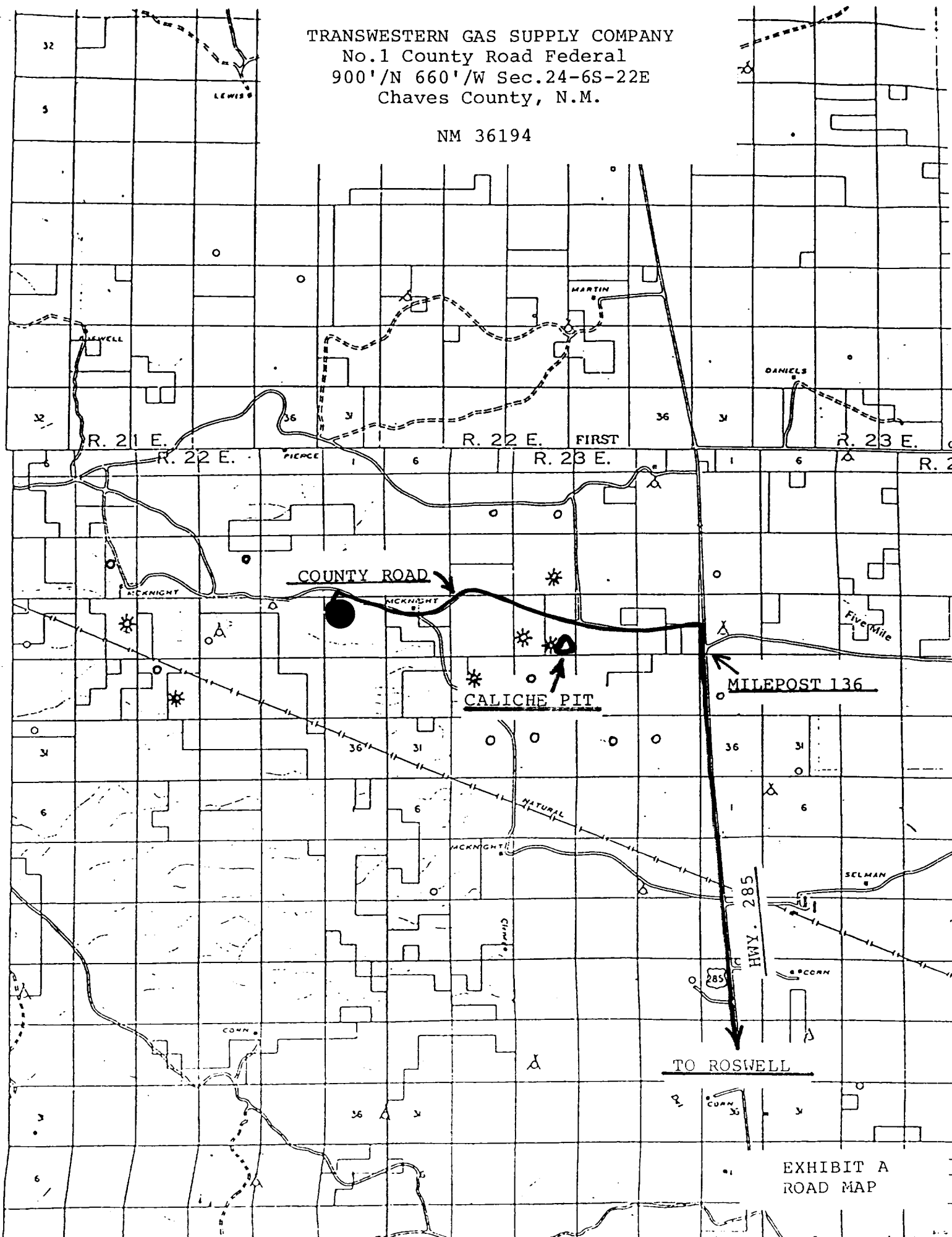
Type of cement and additives will be determined by hole conditions. The intermediate and production casing strings will be tested to 1000 psi.

5. PRESSURE CONTROL EQUIPMENT: Blowout preventer stack will consist of double-ram blowout preventer rated to 3000#WP. A sketch of the BOP is attached.

6. CIRCULATING MEDIUM: Hole for 13 3/8" conductor pipe will be drilled with a rat hole auger. Mud will be used as the circulating medium for the remainder of the hole. Mud additives will be used as hole conditions dictate.
7. AUXILIARY EQUIPMENT: Full-opening kelly cock, to fit the drill string in use, will be kept on the rig floor at all times.
8. TESTING, LOGGING AND CORING PROGRAM:
 - Samples: Surface casing shoe to TD.
 - DST: None anticipated
 - Logging: Gamma Ray-Neutron log and other logs as recommended by well-site geologist.
 - Coring: None anticipated
9. ABNORMAL PRESSURES, TEMPERATURES OR HYDROGEN SULFIDE:
None anticipated. Maximum bottom-hole pressure should not exceed 1200 psi. Bottom-hole temperature will be about 110°F.
10. ANTICIPATED STARTING DATE: Drilling will commence about June 1, 1982. Drilling should be completed within 10 days. Completion operations (perforations and stimulation) will follow drilling operations.

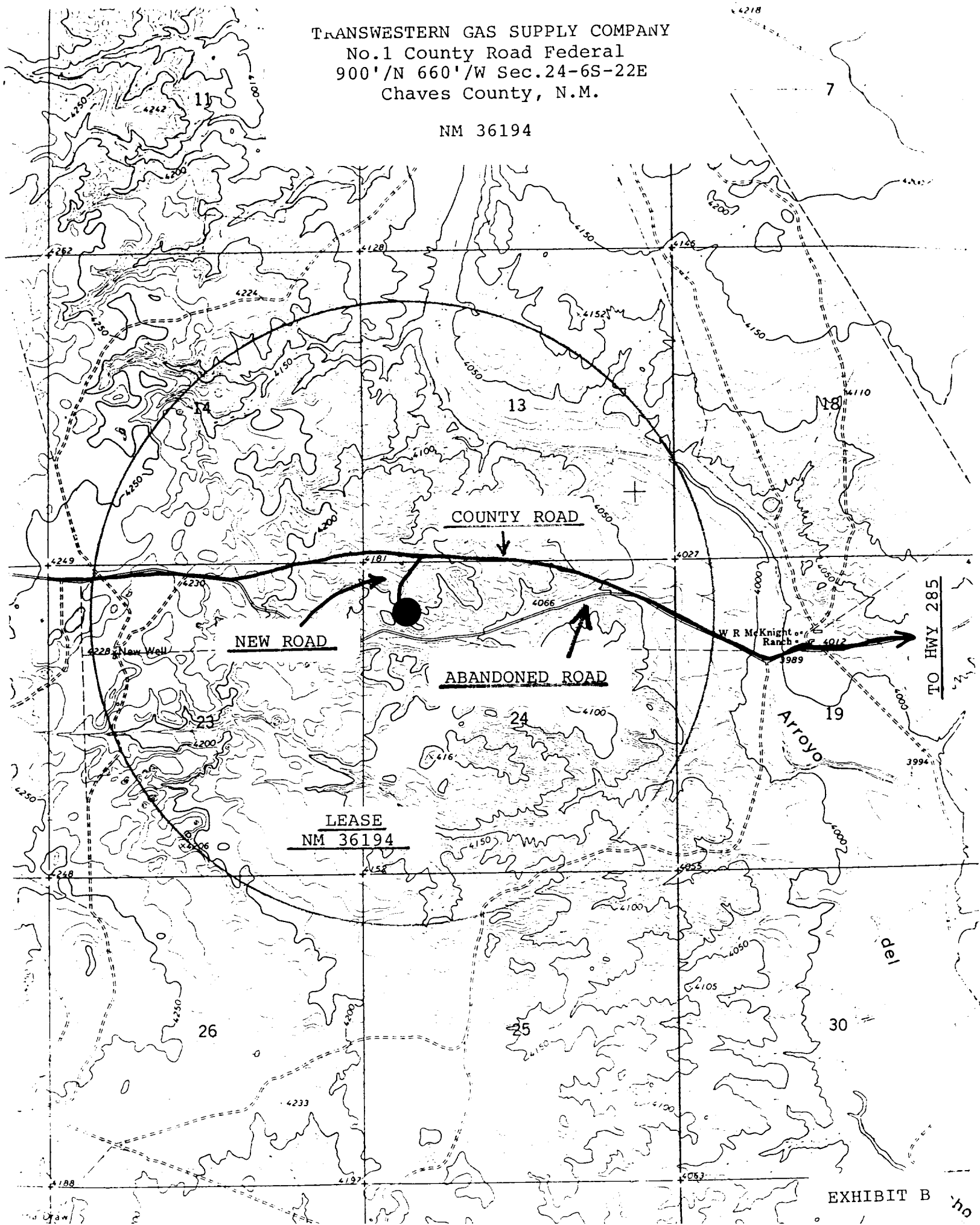
TRANSWESTERN GAS SUPPLY COMPANY
No.1 County Road Federal
900'/N 660'/W Sec.24-6S-22E
Chaves County, N.M.

NM 36194



TRANSWESTERN GAS SUPPLY COMPANY
No.1 County Road Federal
900' /N 660' /W Sec.24-6S-22E
Chaves County, N.M.

NM 36194



REHABILITATION PLAN

Lease No.: 4008 NM 36194; Well Names and No.: 1 County Road Federal
Subdivision: NW $\frac{1}{4}$, Section 24, T. 6 S., R. 22 E.
County Chaves, State New Mexico
Transwestern Gas Supply ~~Oil~~ Company intends to drill a
well on surface owned by William D. McKnight. The lessee/
operator agrees to complete the following rehabilitation work if the
well is a producer:

- ☒ Yes ☐ No Maintain access road and provide adequate drainage
from road.
☒ Yes ☐ No Reshape and seed any area not needed for maintenance
of the production facilities.

Other requirements: _____

_____.

The following work will be completed when the well is abandoned/dry hole:

WELL LOCATION

- ☒ Yes ☐ No Pit will be fenced until dry, then filled to conform
to surrounding topography.
☒ Yes ☐ No Water bars will be constructed as deemed necessary.
☒ Yes ☐ No Site will require reshaping to conform to surrounding
topography.
☒ Yes ☐ No Entire disturbed area will be seeded with the following
seed mixture:

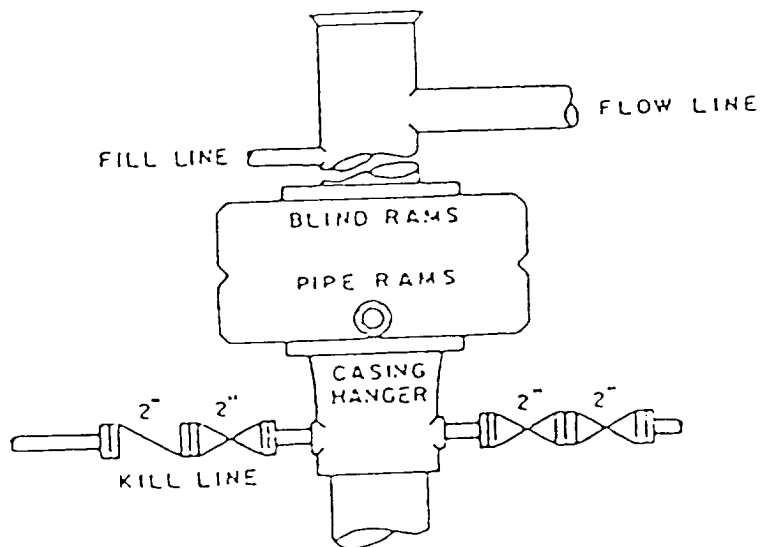
None Decided Later

ACCESS ROAD

- ☒ Yes ☐ No Access road will be closed, rehabilitated and seeded
using the same seed mixture as above.
☒ Yes ☐ No Water bars will be constructed on the access road as
deemed necessary.

Other requirements: _____

TRANSWESTERN GAS SUPPLY COMPANY
No.1 County Road Federal
900' /N 660' /W Sec.24-6S-22E
Chaves County, N.M.



BOP STACK

3000 PSI WORKING PRESSURE
OPERATE RAMS DAILY