

NEW MEXICO CONS. COMMISSION  
Dr. J. R. DD  
UNITED STATES  
DEPARTMENT OF THE INTERIOR  
GEOLOGICAL SURVEYSUBMIT IN THE FIELD  
(Other instructions on back)  
RECEIVEDForm approved.  
Budget Bureau No. 42-R1425.

5. LEASE DESIGNATION AND SERIAL NO.

NM 36193

6. IF INDIAN, ALLOTTEE OR TRIBE NAME

7. UNIT AGREEMENT NAME

8. FARM OR LEASE NAME

Fourmile Draw Federal

9. WELL NO.

2

10. FIELD AND POOL, OR WILDCAT

Wildcat Abo

11. SEC., T., R., M., OR BLK.  
AND SURVEY OR AREA

Sec.17-6S-22E

12. COUNTY OR PARISH

Chaves

13. STATE

N.M.

1a. TYPE OF WORK

DRILL ☒DEEPEN ☐O. C. D.  
PLUG BACK ☐

b. TYPE OF WELL

OIL  
WELL ☐GAS  
WELL ☒

OTHER

SINGLE  
ZONE ☒MULTIPLE  
ZONE ☐

2. NAME OF OPERATOR

TRANSWESTERN GAS SUPPLY COMPANY

3. ADDRESS OF OPERATOR

P.O. Box 2521, Houston, TX 77001

4. LOCATION OF WELL (Report location clearly and in accordance with any State requirements.)\*

At surface

1980'FNL 1650'FEL Sec.17

At proposed prod. zone

Same

14. DISTANCE IN MILES AND DIRECTION FROM NEAREST TOWN OR POST OFFICE\*

30 miles northwest of Roswell, N.M.

15. DISTANCE FROM PROPOSED\*

LOCATION TO NEAREST  
PROPERTY OR LEASE LINE, FT.  
(Also to nearest drlg. unit line, if any)

1650'

16. NO. OF ACRES IN LEASE

2327.51

17. NO. OF ACRES ASSIGNED  
TO THIS WELL

160

18. DISTANCE FROM PROPOSED LOCATION\*

TO NEAREST WELL, DRILLING, COMPLETED,  
OR APPLIED FOR, ON THIS LEASE, FT.

11,220

19. PROPOSED DEPTH

4500' ABO

20. ROTARY OR CABLE TOOLS

Rotary

21. ELEVATIONS (Show whether DF, RT, GR, etc.)

4340 GL

22. APPROX. DATE WORK WILL START\*

May 1, 1982

## 23. PROPOSED CASING AND CEMENTING PROGRAM

SIZE OF HOLE	SIZE OF CASING	WEIGHT PER FOOT	SETTING DEPTH	QUANTITY OF CEMENT
17 1/2"	13 3/8"	48.0# K-55	60'	RediMix - TD to Surface
12 1/4"	8 5/8"	24.0# K-55	1800'±	±950 sx - Circulate
7 7/8"	4 1/2"	10.5# J-55	TD	±350 sx To cover ABO

Propose to drill to about 4500' to test Abo and intermediate formations.

See attached "Supplemental Drilling Data".

See Exhibit "D" for BOP information.

Gas is dedicated.

IN ABOVE SPACE DESCRIBE PROPOSED PROGRAM: If proposal is to deepen or plug back, give data on present productive zone and proposed new productive zone. If proposal is to drill or deepen directionally, give pertinent data on subsurface locations and measured and true vertical depths. Give blowout preventer program, if any.

24. SIGNED Jerry W. Long TITLE Agent DATE April 19, 1982

JERRY W. LONG  
(This space for Federal or State office use)

PERMIT NO.

GEORGE H. STEWART

APPROVAL DATE

MAY 20 1982

APPROVED BY

CONDITIONS OF APPROVAL IF ANY:

JAMES A. GILLHAM  
DISTRICT SUPERVISOR

TITLE

DATE

\*See Instructions On Reverse Side

Pasted ID-I  
API & N.Y. Book  
5-28-82

All distances must be from the outer boundaries of the Section.

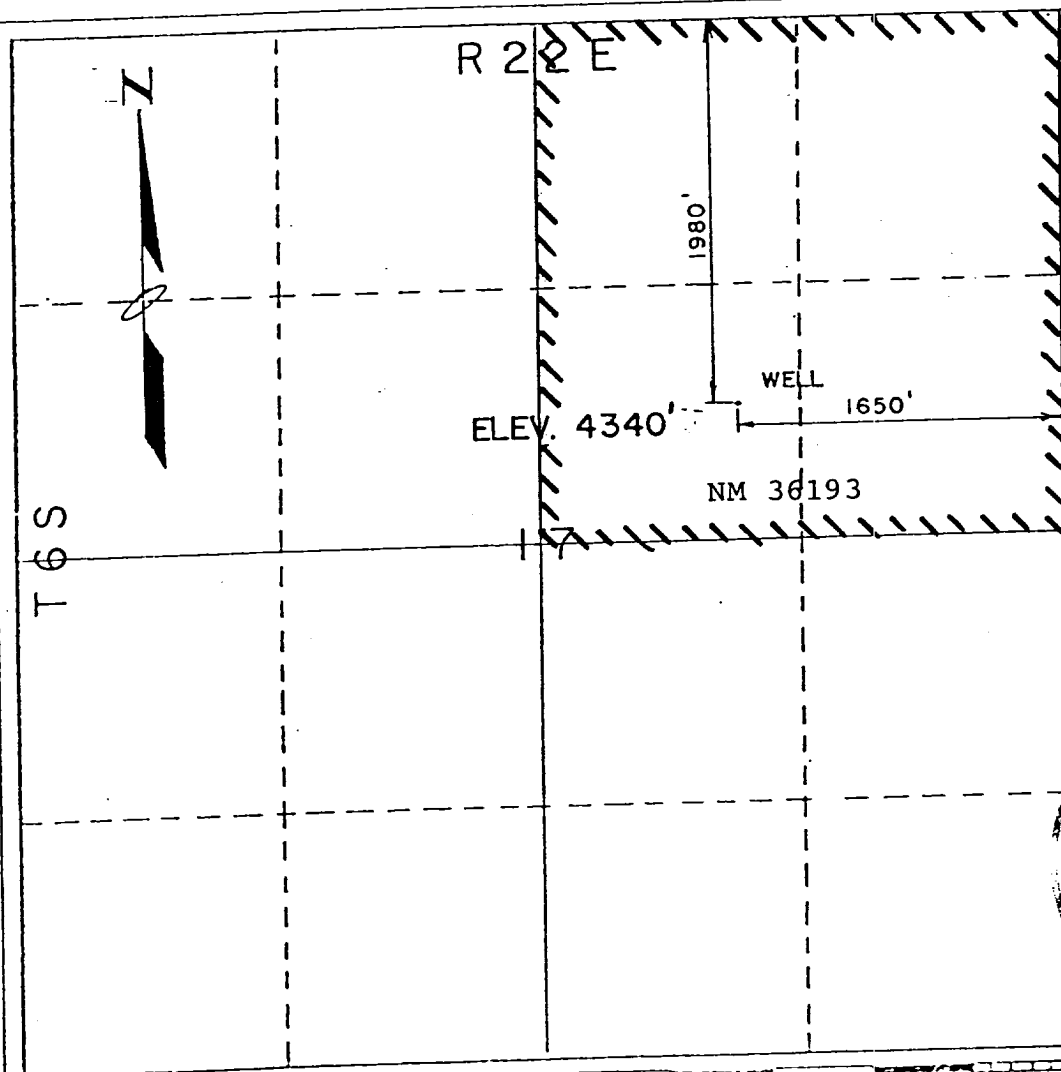
Operator <b>TRANSWESTERN GAS SUPPLY COMPANY</b>			Lease <b>Fourmile Draw Federal</b>		Well No. <b>2</b>
Unit Letter <b>G</b>	Section <b>17</b>	Township <b>6-S</b>	Range <b>22-E</b>	County <b>Chaves</b>	
Actual Footage Location of Well: <b>1980</b> feet from the <b>NORTH</b> line and <b>1650</b> feet from the <b>EAST</b> line					
Ground Level Elev. <b>4340'</b>	Producing Formation <b>ABO</b>		Pool <b>Wildcat Hbo</b>		Dedicated Acreage: <b>160</b> Acres

1. Outline the acreage dedicated to the subject well by colored pencil or hatchure marks on the plat below.
2. If more than one lease is dedicated to the well, outline each and identify the ownership thereof (both as to working interest and royalty). **Single Lease**
3. If more than one lease of different ownership is dedicated to the well, have the interests of all owners been consolidated by communitization, unitization, force-pooling, etc?

☐ Yes ☐ No If answer is "yes," type of consolidation \_\_\_\_\_

If answer is "no," list the owners and tract descriptions which have actually been consolidated. (Use reverse side of this form if necessary.) \_\_\_\_\_

No allowable will be assigned to the well until all interests have been consolidated (by communitization, unitization, forced-pooling, or otherwise) or until a non-standard unit, eliminating such interests, has been approved by the Division.



CERTIFICATION

I hereby certify that the information contained herein is true and complete to the best of my knowledge and belief.

*Jerry W. Long*  
Name  
**JERRY W. LONG**

Position

Agent

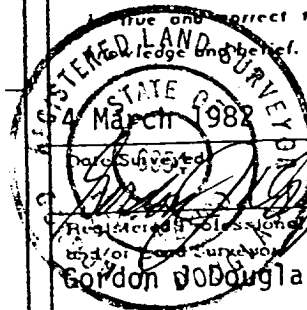
Company

**TRANSWESTERN GAS SUPPLY CO**

Date

**April 19, 1982**

I hereby certify that the well location shown on this plat was plotted from field notes of actual surveys made by me or under my supervision, and that the same are true and correct to the best of my knowledge and belief.



**Gordon J. Douglas, NMPLS**

License No. 6054

Certificate No.

SUPPLEMENTAL DRILLING DATA

TRANSWESTERN GAS SUPPLY COMPANY  
N0.2 Fourmile Draw Federal  
1980'/N 1650'/E Sec.17-6S-22E  
Chaves County, N.M.

NM 36193

The following items supplement Form 9-331C in accordance with instructions contained in NTL-6.

1. SURFACE FORMATION: Permian San Andres
2. ESTIMATED TOPS OF GEOLOGIC MARKERS:

San Andres	Surface
Glorieta	1150'
Tubb	2300'
Abo	2750'
3. ESTIMATED DEPTHS TO WATER, OIL OR GAS FORMATION:

Water	- Surface to 300'
Gas	- 2750' to 4500'
4. PROPOSED CASING PROGRAM:

13 3/8" Casing	- Set two joints with rat hole machine and grout to surface.
8 5/8" Casing	- Set at 1800'± and cement with an estimated 950 sx of cement. (Circulate)
4 1/2" Casing	- Set to total depth and cement with an estimated 350sx of cement to isolate all water, oil and gas zones.

Type of cement and additives will be determined by hole conditions. The intermediate and production casing strings will be tested to 1000 psi.
5. PRESSURE CONTROL EQUIPMENT: Blowout preventer stack will consist of double-ram blowout preventer rated to 3000#WP. A sketch of the BOP is attached.
6. CIRCULATING MEDIUM: Hole for 13 3/8" conductor pipe will be drilled with a rat hole auger. Mud will

be used as the circulating medium. Mud additives will be used as hole conditions dictate.

7. AUXILIARY EQUIPMENT: Full-opening kelly cock, to fit the drill string in use, will be kept on the rig floor at all times.
8. TESTING, LOGGING AND CORING PROGRAM:
  - Samples: Surface casing shoe to TD
  - DST's: None anticipated
  - Logging: Gamma Ray-Neutron log and other logs as recommended by well-site geologist.
  - Coring: None anticipated
9. ABNORMAL PRESSURES, TEMPERATURES OR HYDROGEN SULFIDE:  
None anticipated. Maximum bottom-hole pressure should not exceed 1200 psi. Bottom-hole temperature will be about 110°F.
10. ANTICIPATED STARTING DATE: Drilling will commence about May 1, 1982. Drilling should be completed within 10 days. Completion operations (perforations and stimulation) will follow drilling operations.

TRANSWEST I GAS SUPPLY COMPANY  
No.2 Fourmile Draw Federal  
1980' /N 990' /E Sec.17-6S-22E  
Chaves County, N.M.

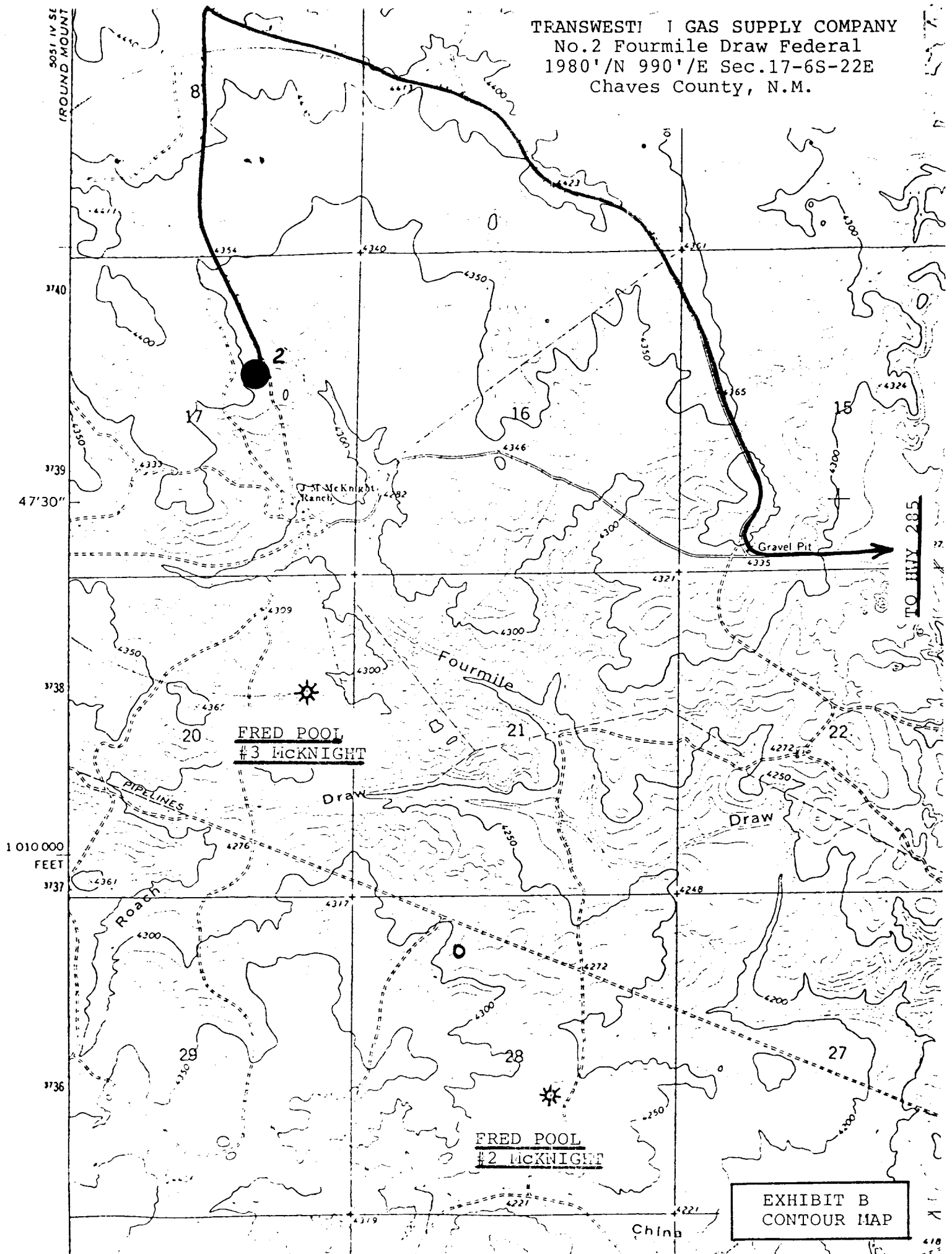
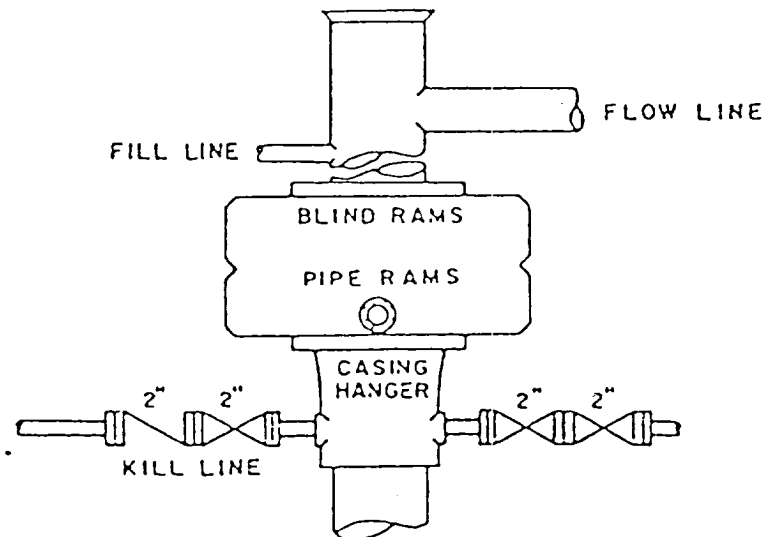


EXHIBIT B  
CONTOUR MAP

TRANSWESTERN GAS SUPPLY COMPANY  
No.2 Fourmile Draw Federal  
1980'/N 1650'/E Sec.17-6S-22E  
Chaves County, N.M.



BOP STACK

3000 PSI WORKING PRESSURE  
RAMS TO BE OPERATED DAILY

REHABILITATION PLAN

Lease No.: NM 36193; Well Names and No.: 2 Fourmile Draw Federal  
Subdivision: NE $\frac{1}{4}$ , Section 17, T. 6 S., R. 22 E.,  
County Chaves, State New Mexico  
Transwestern Gas Supply ~~Oil~~ Company intends to drill a  
well on surface owned by William D. McKnight. The lessee/  
operator agrees to complete the following rehabilitation work if the  
well is a producer:

- ☒ Yes ☐ No Maintain access road and provide adequate drainage  
from road.  
☒ Yes ☐ No Reshape and seed any area not needed for maintenance  
of the production facilities.

Other requirements: \_\_\_\_\_

\_\_\_\_\_.

The following work will be completed when the well is abandoned/dry hole:

WELL LOCATION

- ☒ Yes ☐ No Pit will be fenced until dry, then filled to conform  
to surrounding topography.  
☒ Yes ☐ No Water bars will be constructed as deemed necessary.  
☒ Yes ☐ No Site will require reshaping to conform to surrounding  
topography.  
☒ Yes ☐ No Entire disturbed area will be seeded with the following  
seed mixture:

to be seeded later \_\_\_\_\_  
\_\_\_\_\_

ACCESS ROAD

- ☒ Yes ☐ No Access road will be closed, rehabilitated and seeded  
using the same seed mixture as above.  
☒ Yes ☐ No Water bars will be constructed on the access road as  
deemed necessary