

UNITED STATES  
DEPARTMENT OF THE INTERIOR  
GEOLOGICAL SURVEY

JUN 4 1982

30-00561636

## APPLICATION FOR PERMIT TO DRILL, DEEPEN, OR PLUG BACK

## 1a. TYPE OF WORK

DRILL ☒DEEPEN ☐PLUG BACK ☐

## b. TYPE OF WELL

OIL  
WELL ☐GAS  
WELL ☒OTHER ☐SINGLE  
ZONE ☒MULTIPLE  
ZONE ☐

## 2. NAME OF OPERATOR

MESA PETROLEUM CO. ✓

## 3. ADDRESS OF OPERATOR

1000 VAUGHN BUILDING/MIDLAND, TEXAS 79701-4493

## 4. LOCATION OF WELL (Report location clearly and in accordance with any State requirements.)

At surface

1980' FSL &amp; 1980' FEL

At proposed prod. zone

SAME

## 14. DISTANCE IN MILES AND DIRECTION FROM NEAREST TOWN OR POST OFFICE

32 miles North &amp; East of Roswell, New Mexico

15. DISTANCE FROM PROPOSED\*  
LOCATION TO NEAREST  
PROPERTY OR LEASE LINE, FT.  
(Also to nearest drg. unit line, if any)18. DISTANCE FROM PROPOSED LOCATION\*  
TO NEAREST WELL, DRILLING, COMPLETED,  
OR APPLIED FOR, ON THIS LEASE, FT.

N/A

## 16. NO. OF ACRES IN LEASE

## 19. PROPOSED DEPTH

4700'

17. NO. OF ACRES ASSIGNED  
TO THIS WELL

160

## 20. ROTARY OR CABLE TOOLS

ROTARY

## 22. APPROX. DATE WORK WILL START\*

JUNE 20, 1982

## 21. ELEVATIONS (Show whether DF, RT, GR, etc.)

3780.5'

## 23. PROPOSED CASING AND CEMENTING PROGRAM

SIZE OF HOLE	SIZE OF CASING	WEIGHT PER FOOT	SETTING DEPTH	QUANTITY OF CEMENT
14 3/4"	10 3/4"	40.5#	950'	700/300 SURFACE
9 1/2"	7 5/8"	26.4#	1600'	700/300 TIE BACK
6 1/2" or 7 7/8"	4 1/2"	10.5#	4700'	300 COVER ALL PAY

Propose to drill 14 3/4" hole with mud or air to approximately 950' and run 10 3/4" casing. Will cement to surface and test casing with cementing head to 600 psi. Will reduce hole to 9 1/2" and drill on mud or air to approximately 1600' and run 7 5/8" casing if circulation has been lost and cement with sufficient amounts to tie-back to 10 3/4" casing. Will then reduce hole to 6 1/2" or 6 3/4", test BOP's and casing and drill to total depth. If hole conditions are favorable, the 7 5/8" casing will be omitted and the hole will be reduced to 7 7/8" and drilled to total depth. Either 4 1/2" or 5 1/2" casing will be run as production casing depending upon hole sized drilled to TD.

Operator's gas sales are dedicated.

Partial ID-I  
N. Low Book  
API Book  
6-11-82

XC: MMS (7), TLS, CEN RCDS, ACCTG, MEC, LAND, ROSWELL, REM, FILE, (PARTNERS)

IN ABOVE SPACE DESCRIBE PROPOSED PROGRAM: If proposal is to deepen or plug back, give data on present productive zone and proposed new productive zone. If proposal is to drill or deepen directionally, give pertinent data on subsurface locations and measured and true vertical depths. Give blowout preventer program, if any.

24.

SIGNED

TITLE

REGULATORY COORDINATOR

DATE 5-19-82

(This space for Federal or State office use)

PERMIT NO.

(Orig. Sgd.) GEORGE H. STEWART

APPROVAL DATE

APPROVED BY

TITLE

DATE

CONDITIONS OF APPROVAL, IF ANY:

FOR  
JAMES A. GILLHAM  
DISTRICT SUPERVISOR

**NEW MEXICO OIL CONSERVATION COMMISSION  
WELL LOCATION AND ACREAGE DEDICATION PLAT**

Form C-102  
Supersedes C-128  
Effective 1-1-65

All distances must be from the outer boundaries of the Section.

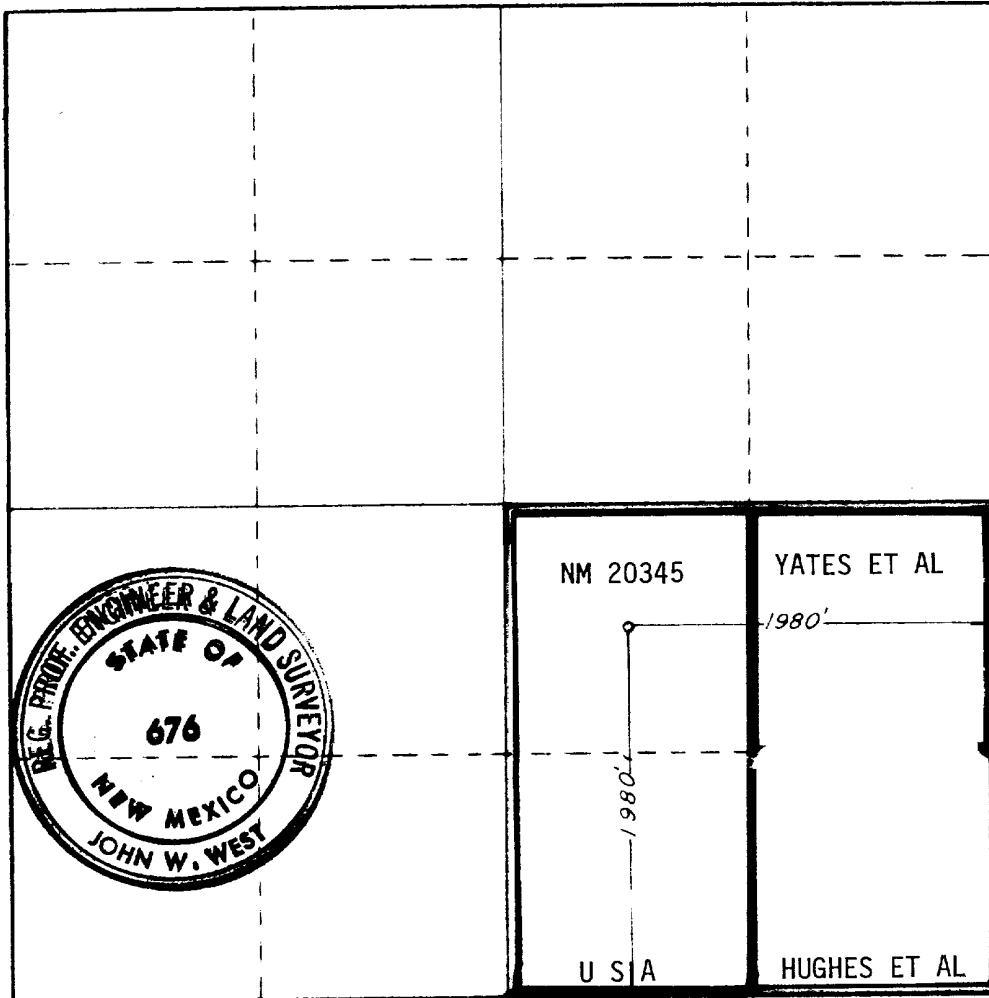
Lessor <b>MESA PETROLEUM CO.</b>			Lease <b>FISHER FEDERAL COM.</b>		Well No. <b>1</b>
Tract Letter <b>J</b>	Section <b>14</b>	Township <b>6</b>	Range <b>26</b>	County <b>CHAVES</b>	
Approximate Location of Well: <b>1980</b> feet from the <b>SOUTH</b> line and <b>1980</b> feet from the <b>EAST</b> line					
Ground Level Elev. <b>3780.5</b>	Producing Formation <b>ABO</b>	Pool <b>WILDCAT</b>		Dedicated Acreage: <b>SE/4 160</b> Acres	

1. Outline the acreage dedicated to the subject well by colored pencil or hatchure marks on the plat below.
2. If more than one lease is dedicated to the well, outline each and identify the ownership thereof (both as to working interest and royalty).
3. If more than one lease of different ownership is dedicated to the well, have the interests of all owners been consolidated by communitization, unitization, force-pooling, etc?

☐ Yes ☐ No If answer is "yes," type of consolidation COMMUNITIZATION IN PROGRESS

If answer is "no," list the owners and tract descriptions which have actually been consolidated. (Use reverse side of this form if necessary.) \_\_\_\_\_

No allowable will be assigned to the well until all interests have been consolidated (by communitization, unitization, forced-pooling, or otherwise) or until a non-standard unit, eliminating such interests, has been approved by the Commission.



**CERTIFICATION**

I hereby certify that the information contained herein is true and complete to the best of my knowledge and belief.

*Michael P. Houston*

Name  
**MICHAEL P. HOUSTON**

Position  
**OPERATION MANAGER**

Company  
**MESA PETROLEUM CO.**

Date  
**MAY 19, 1982**

I hereby certify that the well location shown on this plat was plotted from field notes of actual surveys made by me or under my supervision, and that the same is true and correct to the best of my knowledge and belief.

**5 --12 --82.**

Date Surveyed

Registered Professional Engineer and/or Land Surveyor

*John W. West*

Certificate No.	<b>JOHN W. WEST</b>	<b>676</b>
	<b>PATRICK A. ROMERO</b>	<b>6663</b>
	<b>Ronald J. Eidson</b>	<b>3239</b>

0 330 660 990 1320 1650 1980 2310 2640 2970 3300 3630 3960 4290 4620 4950 5280 5610 5940 6270 6600

APPLICATION FOR PERMIT TO DRILL

MESA PETROLEUM CO.  
FISHER FED COM #1  
1980' FSL & 1980' FEL, SEC 14, T6S, R26E  
CHAVES COUNTY, NEW MEXICO

LEASE NO. NM-20345

In conjunction with Form 9331-C, Application For Permit to Drill subject well, the following additional information is provided:

1. Applicable portions of the GENERAL REQUIREMENTS FOR OIL AND GAS OPERATIONS ON FEDERAL LEASES, Roswell District, Geological Survey of September 1, 1980 will be adhered to.

2. Geological markers are estimated as follows:

SEVEN RIVERS	Surface
SAN ANDRES	893
GLORIETA	1860
TUBB	3341
ABO	3966

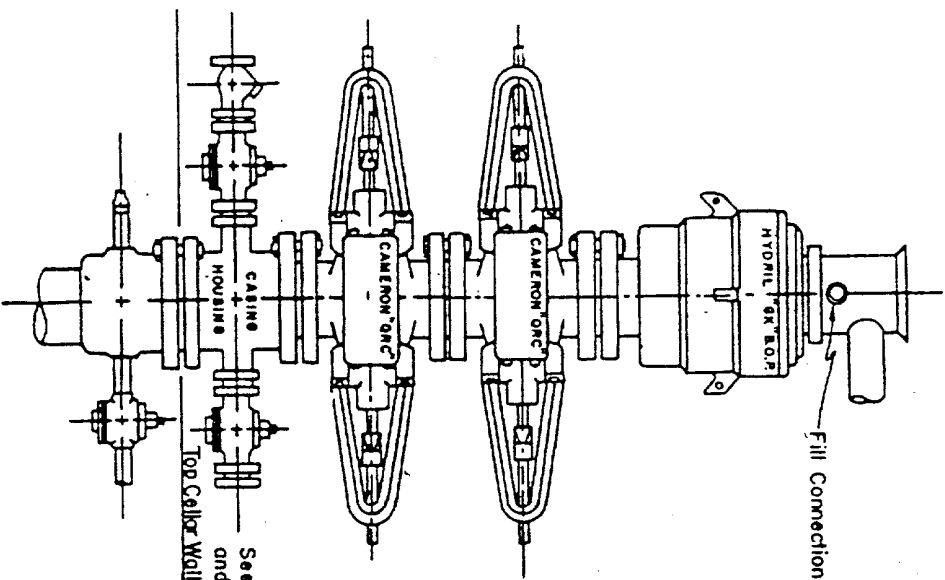
3. Hydrocarbon bearing strata may occur in the Abo formation(s). No fresh water is expected to be encountered below 950'.

4. The Casing and Blowout Preventer Program will be determined by hole conditions as encountered. See Exhibit VI. Anticipate drilling with mud, air or foam using ram type preventer and rotating head for well control. The 10 3/4" casing will be set at approximately 950' to protect any fresh water zones and cemented to the surface. The 7 5/8" casing will be set at approximately 1600' if water zones have been encountered or omitted if not and ram type preventers installed. Sufficient amounts and kinds of cement would be used to ensure any water, gas, or oil zones encountered are isolated and shut off down to the casing point if run. The 4 1/2" production casing will be set at total depth or shallower depending upon the depth of the deepest commercial hydrocarbon bearing strata encountered.

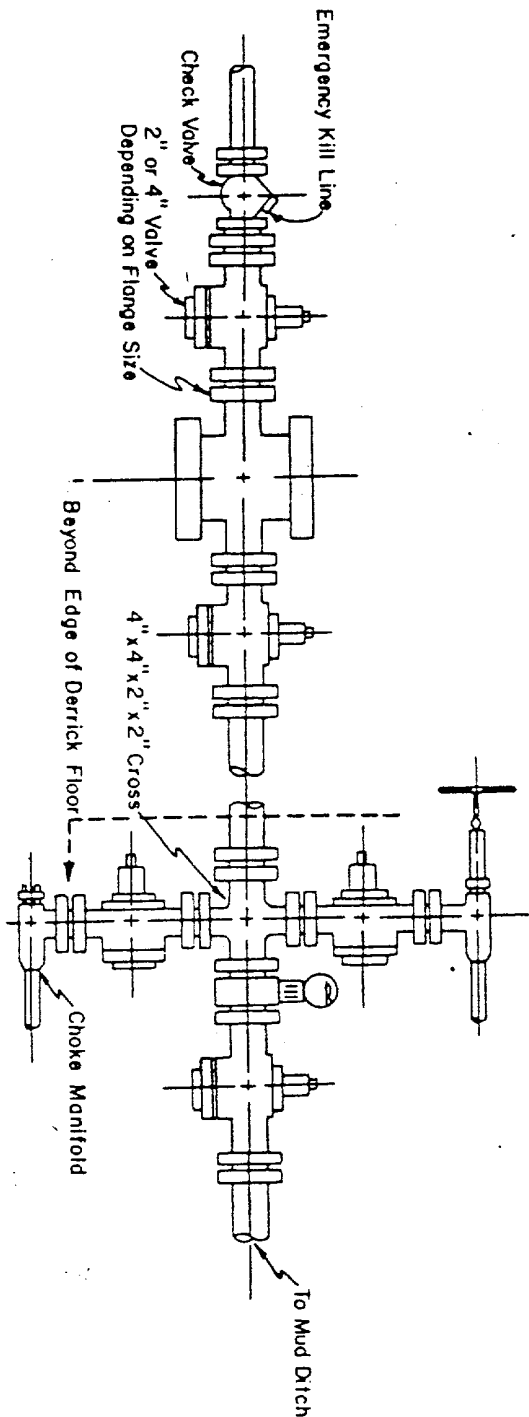
5. No drill stem test or coring program is planned. The logging program may consist of a GR-CNL from surface total depth and FDC from casing point to total depth.

6. Anticipated drilling time is ten days with completion operations to follow as soon as a completion unit is available.

Blow-out Preventers hydril and choke manifold are all 900 Series



3,000 PSI WORKING PRESSURE  
BLOW-OUT PREVENTER HOOK-UP



3,000 PSI WORKING PRESSURE  
KILL, CHOKE, AND FILL CONNECTIONS

DETAIL OF 4" FLOW LINE CHOKE ASSEMBLY

Minimum assembly for 3,000 PSI working pressure will consist of three preventers.  
The bottom and middle preventers may be Cameron.

NOTE: HYDRIL not installed on shallow-low pressure wells.  
RAM type BOPs are API 10" X 3000 PSI



E X H I B I T

V I