

UNITED STATES
DEPARTMENT OF THE INTERIOR
GEOLOGICAL SURVEY

JUN 23 1982

5. LEASE DESIGNATION AND SERIAL NO.

NM-32333

6. IF INDIAN, ALLOTTEE OR TRIBE NAME

7. UNIT AGREEMENT NAME

8. FARM OR LEASE NAME

Jugs Tank Federal

9. WELL NO.

1

10. FIELD AND, POOL, OR WILDCAT

x Undesignated-Abo

11. SEC., T., R., M., OR BLK.
AND SURVEY OR AREA

Sec. 17, T4S, R22E

12. COUNTY OR PARISH

Chaves

13. STATE

N.M.

1a. TYPE OF WORK

DRILL ☒DEEPEN ☐ARTESIA, OFFICE
PLUG BACK ☐

b. TYPE OF WELL

OIL WELL ☐GAS WELL ☒

OTHER

SINGLE ZONE ☒MULTIPLE ZONE ☐

2. NAME OF OPERATOR

TRANSWESTERN GAS SUPPLY COMPANY

3. ADDRESS OF OPERATOR

P.O. BOX 2521, Houston, Texas 77001

4. LOCATION OF WELL (Report location clearly and in accordance with any State requirements.)

At surface

1980' FNL & 1980' FWL Sec. 17

At proposed prod. zone

Same

14. DISTANCE IN MILES AND DIRECTION FROM NEAREST TOWN OR POST OFFICE*

40 miles northwest of Roswell, N.M.

15. DISTANCE FROM PROPOSED*

LOCATION TO NEAREST
PROPERTY OR LEASE LINE, FT.
(Also to nearest drlg. unit line, if any)

1980'

16. NO. OF ACRES IN LEASE

2553.73

17. NO. OF ACRES ASSIGNED
TO THIS WELL

160

18. DISTANCE FROM PROPOSED LOCATION*
TO NEAREST WELL, DRILLING, COMPLETED,
OR APPLIED FOR, ON THIS LEASE, FT.

N/A

19. PROPOSED DEPTH

3800'

20. ROTARY OR CABLE TOOLS

Rotary

21. ELEVATIONS (Show whether DF, RT, GR, etc.)

4458' GR

22. APPROX. DATE WORK WILL START*

June 18, 1982

23.

PROPOSED CASING AND CEMENTING PROGRAM

SIZE OF HOLE	SIZE OF CASING	WEIGHT PER FOOT	SETTING DEPTH	QUANTITY OF CEMENT
17 1/2"	13 3/8"	48.0#	700'	920 sx(Circulate)
12 1/4"	8 5/8"	24.0#	1500'	990 sx(Circulate)
7 7/8"	4 1/2"	10.5#	TD.	350 sx

Propose to drill to approximately 3800' to test for possible commercial production in the Abo and intermediate formations.

BOP diagram is attached.

Gas is dedicated.

IN ABOVE SPACE DESCRIBE PROPOSED PROGRAM: If proposal is to deepen or plug back, give data on present productive zone and proposed new productive zone. If proposal is to drill or deepen directionally, give pertinent data on subsurface locations and measured and true vertical depths. Give blowout preventer program, if any.

24

SIGNED

George H. Stewart

TITLE Agent

DATE June 12, 1982

(This space for Federal or State office use)

PERMIT NO.

(Orig. Sgd.) GEORGE H. STEWART

APPROVAL DATE

JUN 21 1982

APPROVED BY

TITLE

DATE

CONDITIONS OF

APPROVAL, IF ANY:

JAMES A. CILLHAM
DISTRICT SUPERVISOR

All distances must be from the outer boundaries of the Section.

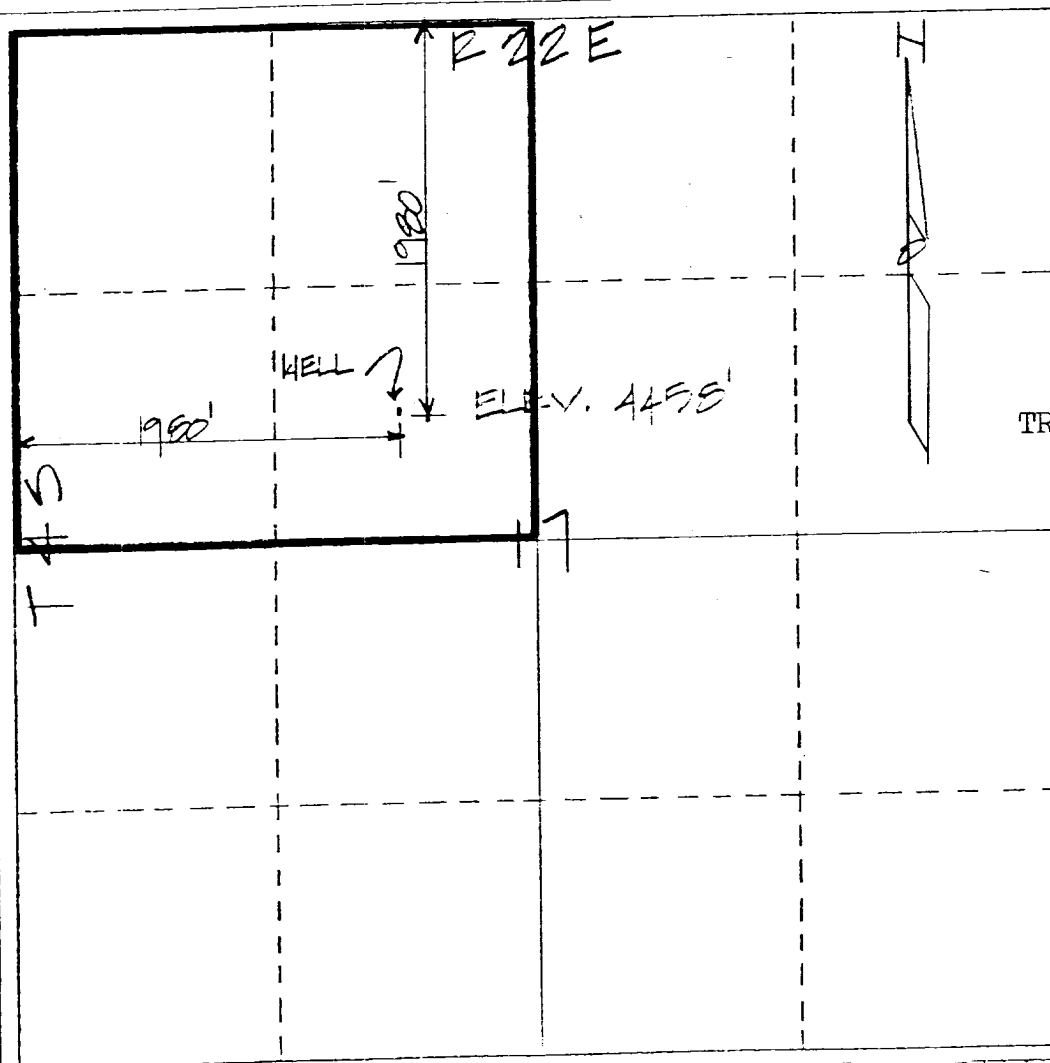
Operator TRANSWESTERN GAS SUPPLY COMPANY			Lease JUGS TANK FEDERAL		Well No. 1
Unit Letter F	Section 17	Township 4-S	Range 22-E	County Chaves	
Actual Footage Location of Well:					
1980 feet from the NORTH line and		1980 feet from the WEST line			
Ground Level Elev. 4458'	Producing Formation ABO	Pool UNDESIGNATED		Dedicated Acreage: 160 Acres	

1. Outline the acreage dedicated to the subject well by colored pencil or hatchure marks on the plat below.
2. If more than one lease is dedicated to the well, outline each and identify the ownership thereof (both as to working interest and royalty).
3. If more than one lease of different ownership is dedicated to the well, have the interests of all owners been consolidated by communitization, unitization, force-pooling, etc?

☐ Yes ☐ No If answer is "yes," type of consolidation _____

If answer is "no," list the owners and tract descriptions which have actually been consolidated. (Use reverse side of this form if necessary.) _____

No allowable will be assigned to the well until all interests have been consolidated (by communitization, unitization, forced-pooling, or otherwise) or until a non-standard unit, eliminating such interests, has been approved by the Division.



CERTIFICATION

I hereby certify that the information contained herein is true and complete to the best of my knowledge and belief.

Name Gerry W. Frankli
Position AGENT
Company TRANSWESTERN GAS SUPPLY CO.
Date 6/10/82

I hereby certify that the well location shown on this plat was plotted from field notes of actual surveys made by me or under my supervision, and that the same is true and correct to the best of my knowledge and belief.

21 May 1982

Date Surveyed Gordon E. Douglas
Registered Professional Engineer
and/or Land Surveyor
Gordon E. Douglas, P.L.S.
N.M. License No. 6054

Certificate No. _____

APPLICATION TO DRILL

TRANSWESTERN GAS SUPPLY COMPANY

Jugs Tank Federal No. 1
1980' FNL & 1980' FWL
Section 17, T4S, R22E
Chaves County, N.M.

NM-32333

The following answers are provided for your consideration in response to your outline under Section II of Bulletin NTL-6:

1. Location: 1980' FNL & 1980' FWL, Section 17, T4S, R22E, Chaves County New Mexico.
2. Elevation Above Sea Level: 4458'
3. Geologic Name of Surface Formation: Permian
4. Drilling Tools and Associated Equipment: Conventional rotary drilling tools using mud for the circulation medium.
5. Proposed Drilling Depth: 3800'
6. Estimated Geological Marker Tops:

Glorietta	1110'
Tubb	2276'
Abo	2720'
7. Mineral Bearing Formation: Gas bearing at 3425'.
8. Casing Program:
 - 20.0" Casing - Set 60' of 20" conductor pipe with rat hole machine Grout to surface.
 - 13 3/8" Casing - Set at approximately 700' and cement to surface using an estimated 920 sx of cement.
 - 8 5/8" Casing - Set at approximately 1500' and cement to surface using an estimated 990 sx of cement.
 - 4 1/2" Casing - Set to total depth and cement with an estimated 350 sx of cement to isolate all water, oil and gas zones.

9. Pressure Control Equipment: Blowout preventer stack will consist of double-ram blowout preventer rated to 3000 psi working pressure. BOP sketch is attached.
10. Proposed Circulation Medium: Mud will be used for circulation for all depths in this well. Hole conditions will dictate the mud additives.
11. Testing, Logging, and Coring Program:
 - Testing: All testing will be commenced after the well has been drilled and casing has been set and cemented.
 - Logging: Compensated Neutron Formation Density with gamma ray and caliper, and Dual Laterolog-RXO.
 - Coring : No coring anticipated.
12. Potential Hazards: No abnormal pressure or temperature zones are anticipated.
13. Anticipated Starting Date: Drilling will commence approximately June 18, 1982. Drilling should be completed within 10 days. Completion operations will commence following drilling operations.

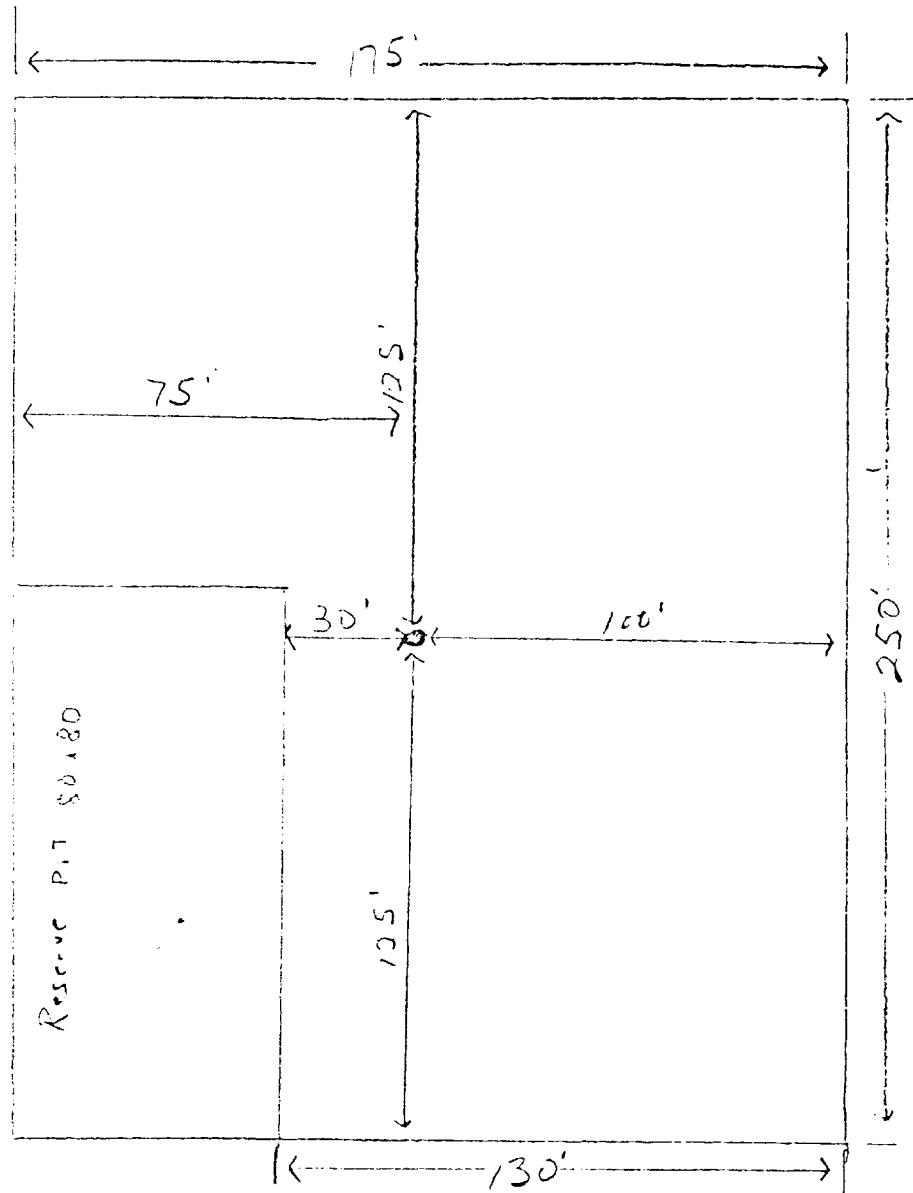
Young Drilling Co.

P. O. BOX 717

FARMINGTON, NEW MEXICO 87401

(505) 327-5218

Rig #4

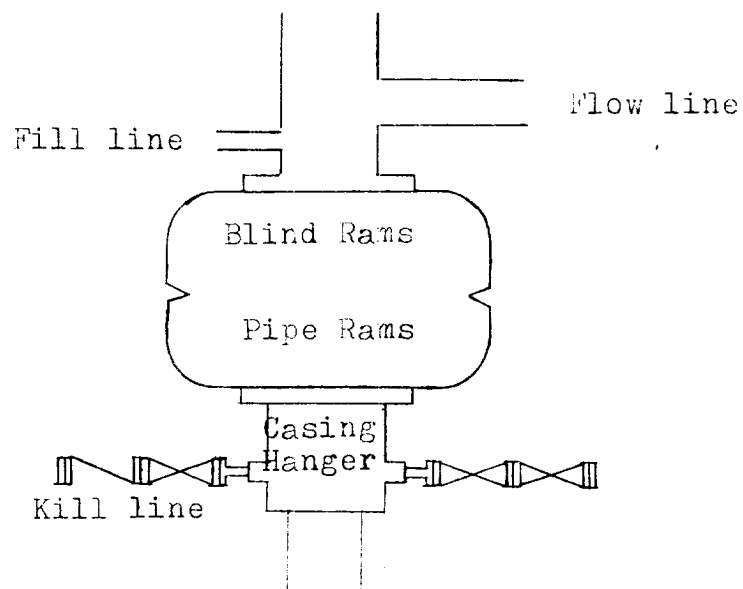


Cellar 4' x 4' x 4'

Location for Young Rig #4

EXHIBIT 'C'

Transwestern Gas Supply Company
Jugs Tank Federal No. 1
1980' FNL & 1980' FWL
Section 17, T4S, R22E
Chaves County, N.M.



Blowout Preventer
3000 psi working pressure