

UNITED STATES
DEPARTMENT OF THE INTERIOR
GEOLOGICAL SURVEY

Drawer DD
(Per instruction on reverse side)
Artesia, NM 88210

30-005-61709

RECEIVED

NM-36653

JUL 15 1982

O. C. D.

ARTESIA, OFFICE

CAROL FEDERAL

9. WELL NO.

11

10. FIELD AND POOL, OR WILDCAT

X UNDESIGNATED ABO

11. SEC., T., R., M., OR BLK.
AND SURVEY OR AREA

SEC 24, T7S, R22E

12. COUNTY OR PARISH 13. STATE

CHAVES

NEW MEXICO

17. NO. OF ACRES ASSIGNED
TO THIS WELL

20. ROTARY OR CABLE TOOLS

22. APPROX. DATE WORK WILL START*

AUGUST 10, 1982

1a. TYPE OF WORK

DRILL ☒ X

DEEPEN ☐

PLUG BACK ☐

b. TYPE OF WELL

OIL
WELL ☐

GAS
WELL ☒ X

OTHER

SINGLE
ZONE ☒ X

MULTIPLE
ZONE ☐

2. NAME OF OPERATOR

MESA PETROLEUM CO. ✓

3. ADDRESS OF OPERATOR

1000 VAUGHN BUILDING/MIDLAND, TEXAS 79701-4493

4. LOCATION OF WELL (Report location clearly and in accordance with any State requirements.)*

At surface

402 FNL & 1764' FWL NE 1/4 NW 1/4 C

At proposed prod. zone

SAME

14. DISTANCE IN MILES AND DIRECTION FROM NEAREST TOWN OR POST OFFICE*

34 miles Northwest of Roswell, New Mexico

15. DISTANCE FROM PROPOSED*

LOCATION TO NEAREST
PROPERTY OR LEASE LINE, FT.
(Also to nearest drlg. unit line, if any)

1764' / 402'

18. DISTANCE FROM PROPOSED LOCATION*
TO NEAREST WELL, DRILLING, COMPLETED,
OR APPLIED FOR, ON THIS LEASE, FT.

2000'

16. NO. OF ACRES IN LEASE

2441.2

19. PROPOSED DEPTH

3200'

21. ELEVATIONS (Show whether DF, RT, GR, etc.)

4194' GR

23.

PROPOSED CASING AND CEMENTING PROGRAM

SIZE OF HOLE	SIZE OF CASING	WEIGHT PER FOOT	SETTING DEPTH	QUANTITY OF CEMENT
12 1/4"	8 5/8"	24#	1400'	700/300 SURFACE
7 7/8"	4 1/2"	10.5#	3200'	350 COVER ALL PAY

Propose to drill 12 1/4" hole to approximately 1400' to set 8 5/8" surface casing and cement to surface. Will nipple up ram type BOP's and reduce hole to 7 7/8" to drill to total depth. Drilling medium will be air, foam, or mud as required. After log evaluation, 4 1/2" casing may be run and cemented with sufficient kinds and amounts to isolate and seal off any fresh water, oil or gas zones encountered.

Operator's Gas Sales are dedicated.

RECEIVED
JUL 1 1982

OIL & GAS
U.S. GEOLOGICAL SURVEY
ROSWELL, NEW MEXICO

XC: MMS (7), TLS, CEN RCDS, ACCTG, MEC, LAND, ROSWELL, REM, FILE. (PARTNERS)
IN ABOVE SPACE DESCRIBE PROPOSED PROGRAM: If proposal is to deepen or plug back, give data on present productive zone and proposed new productive zone. If proposal is to drill or deepen directionally, give pertinent data on subsurface locations and measured and true vertical depths. Give blowout preventer program, if any.

24.

SIGNED

R. F. Mack

TITLE

REGULATORY COORDINATOR

DATE

6-30-82

(This space for Federal or State office use)

APPROVED

(Orig. Sgd.)

GEORGE H. STEWART

PERMIT NO.

APPROVAL DATE

APPROVED BY

TITLE

DATE

CONDITIONS OF APPROVAL, IF ANY:

JAMES A. CULHAM
DISTRICT SUPERVISOR

JUL 13 1982

lasted ID-I
API & M. Bork
7-23-82

All distances must be from the outer boundaries of the Section.

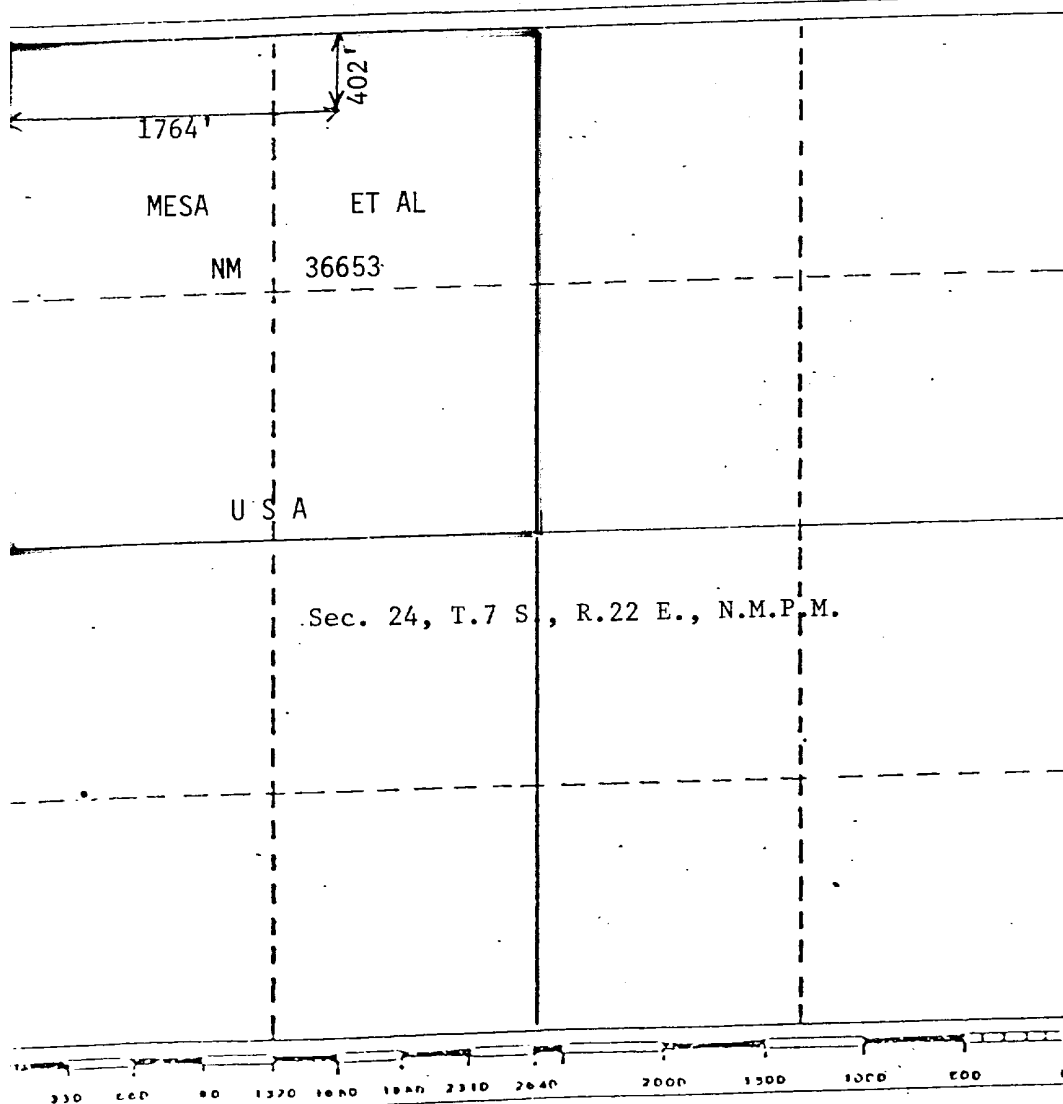
Operator Mesa Petroleum Co.			Lease Carol Federal			Well No. 11		
Initial Letter C	Section 24	Township 7 S.	Range 22 E.	County Chaves				
Actual Footage Location of Well:								
402 feet from the North line and			1764 feet from the West line					
Ground Level Elev. 4194		Producing Formation ABO		Pool UNDESIGNATED		Dedicated Acreage: NW/4 160 Acres		

1. Outline the acreage dedicated to the subject well by colored pencil or hachure marks on the plat below.
2. If more than one lease is dedicated to the well, outline each and identify the ownership thereof (both as to working interest and royalty).
3. If more than one lease of different ownership is dedicated to the well, have the interests of all owners been consolidated by communitization, unitization, force-pooling, etc?

☐ Yes ☐ No If answer is "yes," type of consolidation _____

If answer is "no," list the owners and tract descriptions which have actually been consolidated. (Use reverse side of this form if necessary.) _____

No allowable will be assigned to the well until all interests have been consolidated (by communitization, unitization, forced-pooling, or otherwise) or until a non-standard unit, eliminating such interests, has been approved by the Division.



CERTIFICATION

I hereby certify that the information contained herein is true and complete to the best of my knowledge and belief.

R. E. Mathis

Name
R. E. MATHIS

Position
REGULATORY COORDINATOR

Company
MESA PETROLEUM CO.

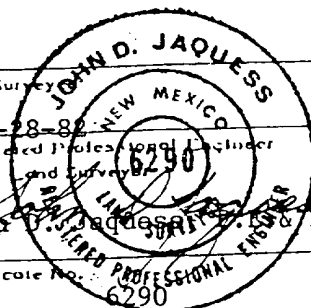
Date
JUNE 30, 1982

I hereby certify that the well location shown on this plat was plotted from field notes of actual surveys made by me or under my supervision, and that the same is true and correct to the best of my knowledge and belief.

Date Survey
6-28-82

Registered Professional Engineer and/or Land Surveyor
JOHN D. JAQUESS

Certificate No.
6290



APPLICATION FOR PERMIT TO DRILL

MESA PETROLEUM CO.
CAROL FEDERAL #11
402' FNL & 1764' FWL, SEC 24, T7S, R22E
CHAVES COUNTY, NEW MEXICO

LEASE NO. NM-36653

In conjunction with Form 9331-C, Application For Permit to Drill subject well, the following additional information is provided:

1. Applicable portions of the GENERAL REQUIREMENTS FOR OIL AND GAS OPERATIONS ON FEDERAL LEASES, Roswell District, Geological Survey of September 1, 1980 will be adhered to.

2. Geological markers are estimated as follows:

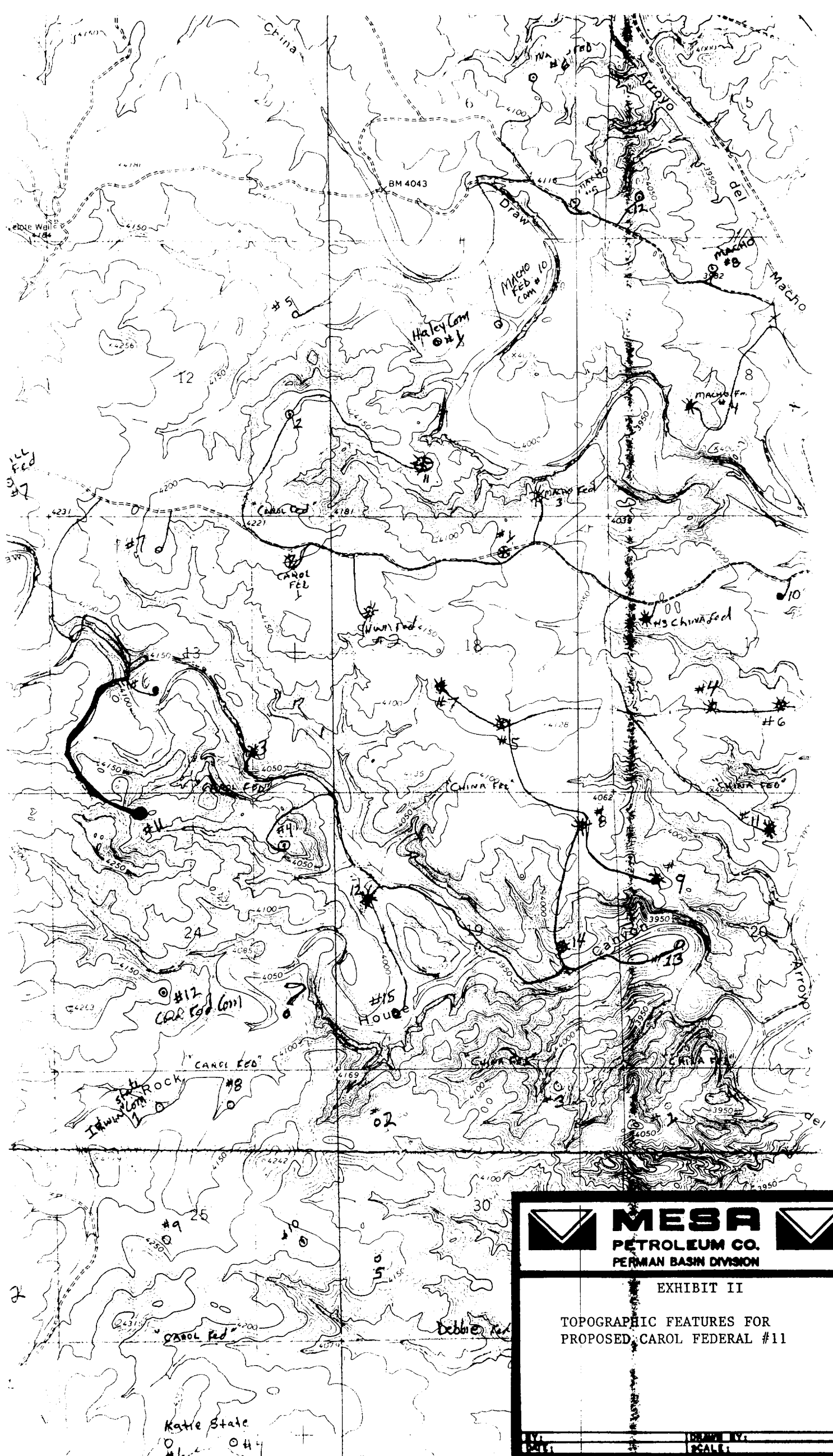
SEVEN RIVERS	Surface
SAN ANDRES	918
GLORIETA	1096
TUBB	2444
ABO	2829

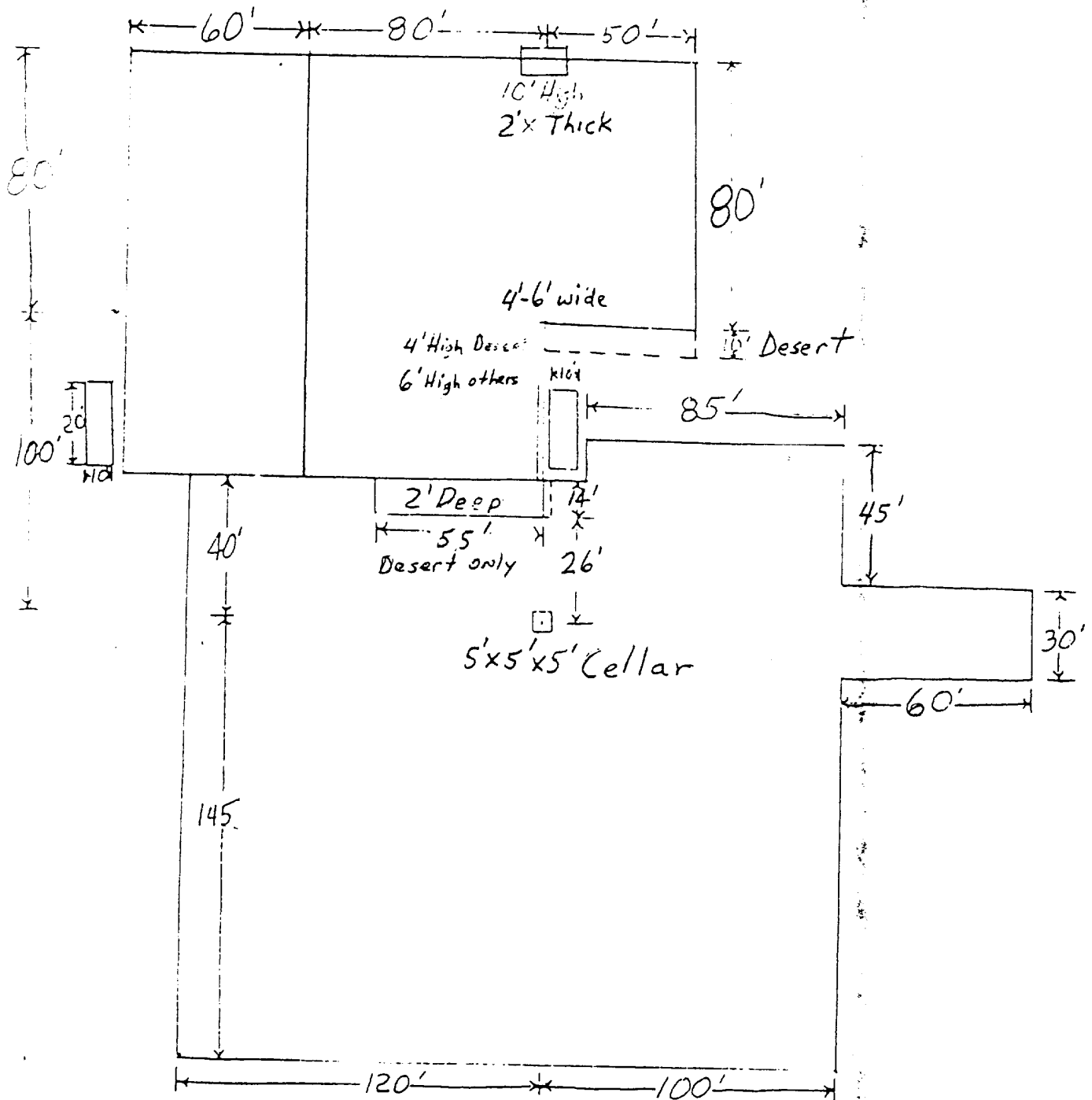
3. Hydrocarbon bearing strata may occur in the Abo formation(s). No fresh water is expected to be encountered below 1400'.

4. The Casing and Blowout Preventer Program will be determined by hole conditions as encountered. See Exhibit VI. Anticipate drilling with air or foam using ram type preventer and rotating head for well control. ~~The 8 5/8" casing will be set at approximately 1400' to~~ protect any fresh water zones and cemented to the surface. The 4 1/2" production casing will be set at total depth or shallower depending upon the depth of the deepest commercial hydrocarbon bearing strata encountered. Sufficient amounts and kinds of cement would be used to ensure any water, gas, or oil zones encountered are isolated and shut off down to the casing point if run.

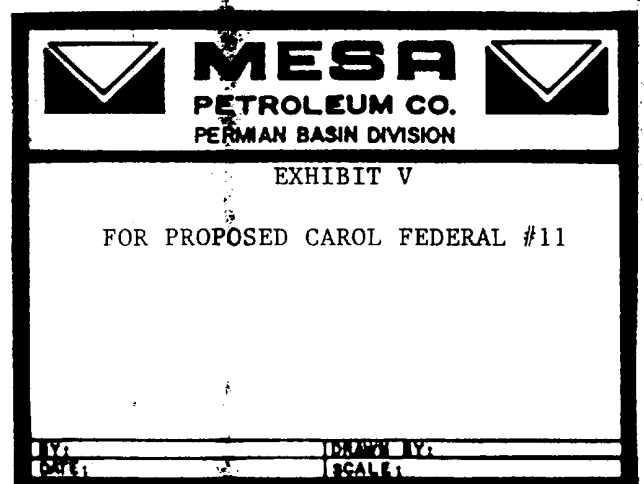
5. No drill stem test or coring program is planned. The logging program may consist of a GR-CNL from surface total depth and FDC from casing point to total depth.

6. Anticipated drilling time is ten days with completion operations to follow as soon as a completion unit is available.

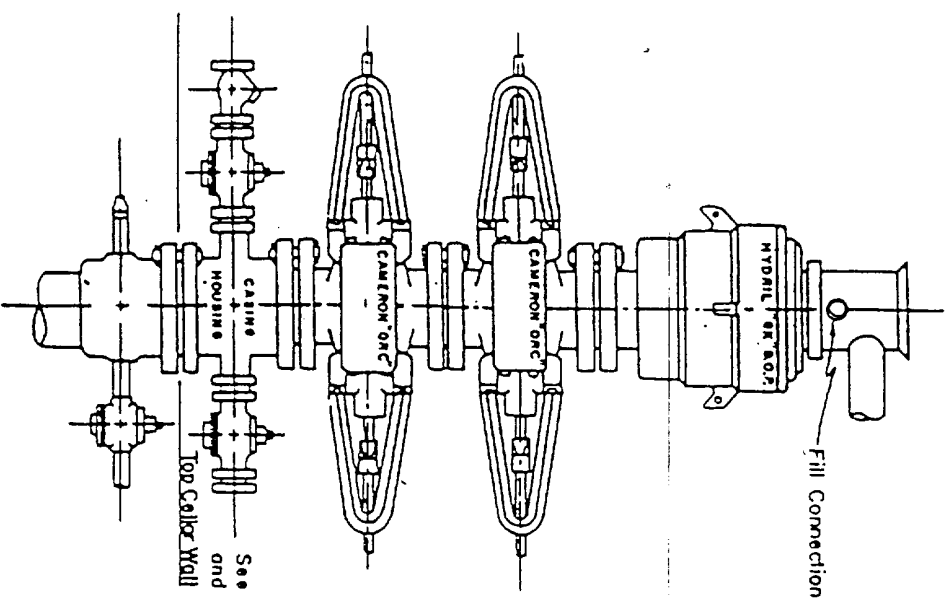




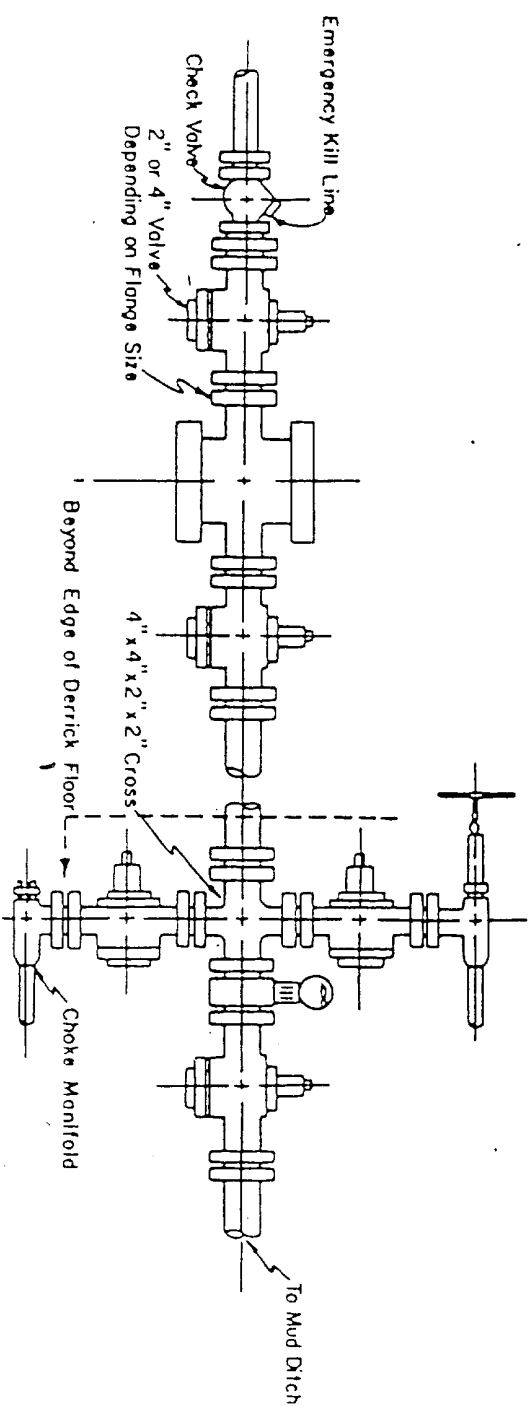
6"-8" Watered & Compacted Caliche
ON PAD & ROAD IF NEEDED



Blow-out Preventers hydril and choke manifold are all 900 Series



3,000 PSI WORKING PRESSURE
BLOW-OUT PREVENTER HOOK-UP



3,000 PSI WORKING PRESSURE
KILL, CHOKE, AND FILL CONNECTIONS

DETAIL OF 4" FLOW LINE CHOKE ASSEMBLY

Minimum assembly for 3,000 PSI working pressure will consist of three preventers.
The bottom and middle preventers may be Cameron.

NOTE: HYDRIL not installed on shallow-low pressure wells.
RWM type BOPs are API 10" X 3000 PSI

E X H I B I T
V I

