

UNITED STATES
DEPARTMENT OF THE INTERIOR
GEOLOGICAL SURVEY

APPLICATION FOR PERMIT TO DRILL, DEEPEN, OR PLUG BACK

1a. TYPE OF WORK

DRILL ☒DEEPEN ☐PLUG BACK ☐

b. TYPE OF WELL

OIL
WELL ☐GAS
WELL ☒

OTHER

SINGLE
ZONE ☐MULTIPLE
ZONE ☐

2. NAME OF OPERATOR

Beard Oil Company ✓

3. ADDRESS OF OPERATOR Suite 200, 2000 Classen Building

2000 Classen Blvd., Oklahoma City, Oklahoma 73106

4. LOCATION OF WELL (Report location clearly and in accordance with any State requirements.)

At surface

990' FSL & 1980' FEL

At proposed prod. zone

Same

14. DISTANCE IN MILES AND DIRECTION FROM NEAREST TOWN OR POST OFFICE*

22 miles northeast of Roswell, New Mexico

15. DISTANCE FROM PROPOSED*

LOCATION TO NEAREST
PROPERTY OR LEASE LINE, FT.
(Also to nearest drlg. unit line, if any)

660'

16. NO. OF ACRES IN LEASE

320

17. NO. OF ACRES ASSIGNED

TO THIS WELL
16018. DISTANCE FROM PROPOSED LOCATION*
TO NEAREST WELL, DRILLING, COMPLETED,
OR APPLIED FOR, ON THIS LEASE, FT.

None

19. PROPOSED DEPTH

4100'

20. ROTARY OR CABLE TOOLS

Rotary

21. ELEVATIONS (Show whether DF, RT, GR, etc.)

3756 GR

22. APPROX. DATE WORK WILL START*

October 1, 1982

23. PROPOSED CASING AND CEMENTING PROGRAM

SIZE OF HOLE	SIZE OF CASING	WEIGHT PER FOOT	SETTING DEPTH	QUANTITY OF CEMENT
14 3/4"	10 3/4"	40.5#	925'	700 Sx Circulated to surface
Optional 9 1/2"	7 5/8"	24.0#	1510'	700 Sx " " "
6 1/2 or 7 7/8"	4 1/2"	10.5#	4100'	300 Sx to cover Abo
				400 Sx to cover Glorieta

We propose to drill and test the Abo formation to a total depth of 4100'. Approximately 925' of 10 3/4" surface casing will be set and cement circulated to surface. If needed, due to lost circulation, approximately 1510' of 7 5/8" casing will be run and cemented with enough cement to tie back to the 10 3/4" surface casing. If commercial, production casing will be run and cemented with adequate quantity to cover the Abo formation and also sufficient cement to cover 200' below the Glorieta and tie back to the surface casing, if the intermediate casing is not run.

Mud Program: See Exhibit "F" -- Mud program proposal from Marrs Mud, Inc.

BOP Program: At 1510', install and test to 3000#, pipe rams, blind rams (middle) bag-type preventer and choke manifold. BOP accumulator volume will be sufficient to operate the bag preventer and blind rams with a snap action through the close, open close sequence.

Gas sales are not dedicated.

IN ABOVE SPACE DESCRIBE PROPOSED PROGRAM: If proposal is to deepen or plug back, give data on present productive zone and proposed new productive zone. If proposal is to drill or deepen directionally, give pertinent data on subsurface locations and measured and true vertical depths. Give blowout preventer program, if any.

24.

SIGNED

APPROVED

Agent for:

TITLE Beard Oil Company

DATE August 12, 1982

(This space for Federal or State office use)

PERMIT NO.

AUG 26 1982

APPROVAL DATE

(Orig. Sgd.) GEORGE H. STEWART

APPROVED BY JAMES A. GILLHAM

TITLE

DATE

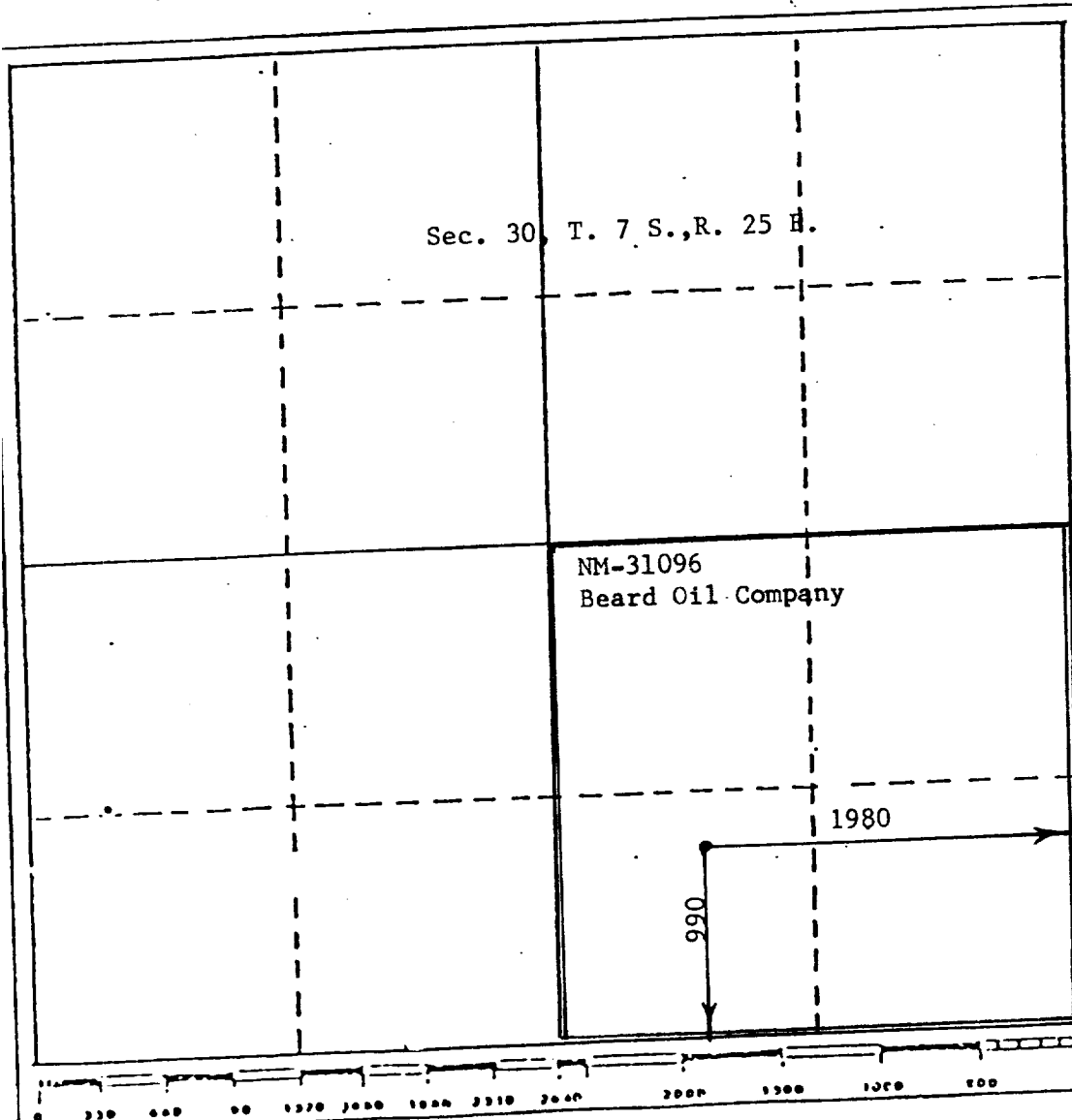
CONDITIONS OF PERMIT DISTRICT SUPERVISOR

All distances must be from the outer boundaries of the Section.

Operator Beard Oil		Lease Coyote Federal 30 Federal		Well No. #1
Section 30	Township 7 South	Range 25 East	County Chaves	
Actual Postage Location of Well: 990 feet from the South line and 1980 feet from the East line				
Ground Level Elev. 3761	Producing Formation Abo	Pool Undesignated	Dedicated Acreage: 160 Acres	

1. Outline the acreage dedicated to the subject well by colored pencil or hatchure marks on the plat below.
2. If more than one lease is dedicated to the well, outline each and identify the ownership thereof (both as to working interest and royalty).
3. If more than one lease of different ownership is dedicated to the well, have the interests of all owners been consolidated by communitization, unitization, force-pooling, etc?

☐ Yes ☐ No If answer is "yes," type of consolidation _____
If answer is "no," list the owners and tract descriptions which have actually been consolidated. (Use reverse side of this form if necessary.) _____
No allowable will be assigned to the well until all interests have been consolidated (by communitization, unitization, forced-pooling, or otherwise) or until a non-standard unit, eliminating such interests, has been approved by the Division.



CERTIFICATION

I hereby certify that the information contained herein is true and complete to the best of my knowledge and belief.

George R. Smith

Name
George R. Smith

Position
Agent for:

Company
Beard Oil Company

Date
August 11, 1982

I hereby certify that the well location shown on this plat was plotted from field notes of actual surveys made by me or under my supervision, and that the same is true and correct to the best of my knowledge and belief.

JOHN D. JAQUES
Date Surveyed **August 4, 1982**
Registered Professional Engineer and/or Land Surveyor
JOHN D. JAQUES, P.E. & L.S.
Certificate No. **6290**

APPLICATION FOR DRILLING

BEARD OIL COMPANY
Coyote Federal 30, Well No. 1
990' FSL & 1980' FEL, Sec. 30-T7S-R25E
Chaves County, New Mexico
Lease No.: NM-31096
(Exploratory Well)

In conjunction with Form 9-331C, Application for Permit to Drill subject well, Beard Oil Company submits the following items of pertinent information in accordance with MMS requirements:

1. The geologic surface formation is Permian with quaternary alluvium and other surficial deposits.
2. The estimated tops of geologic markers are as follows:

San Andres	280'	Abo	3450'
Glorieta	1310'	Hueco	4090'
Tubb	2850'	T. D.	4100'
3. The estimated depth at which anticipated water, oil, or gas formations are expected to be encountered:

Water: Approximately at 280-380' and possibly 1250-1350'.

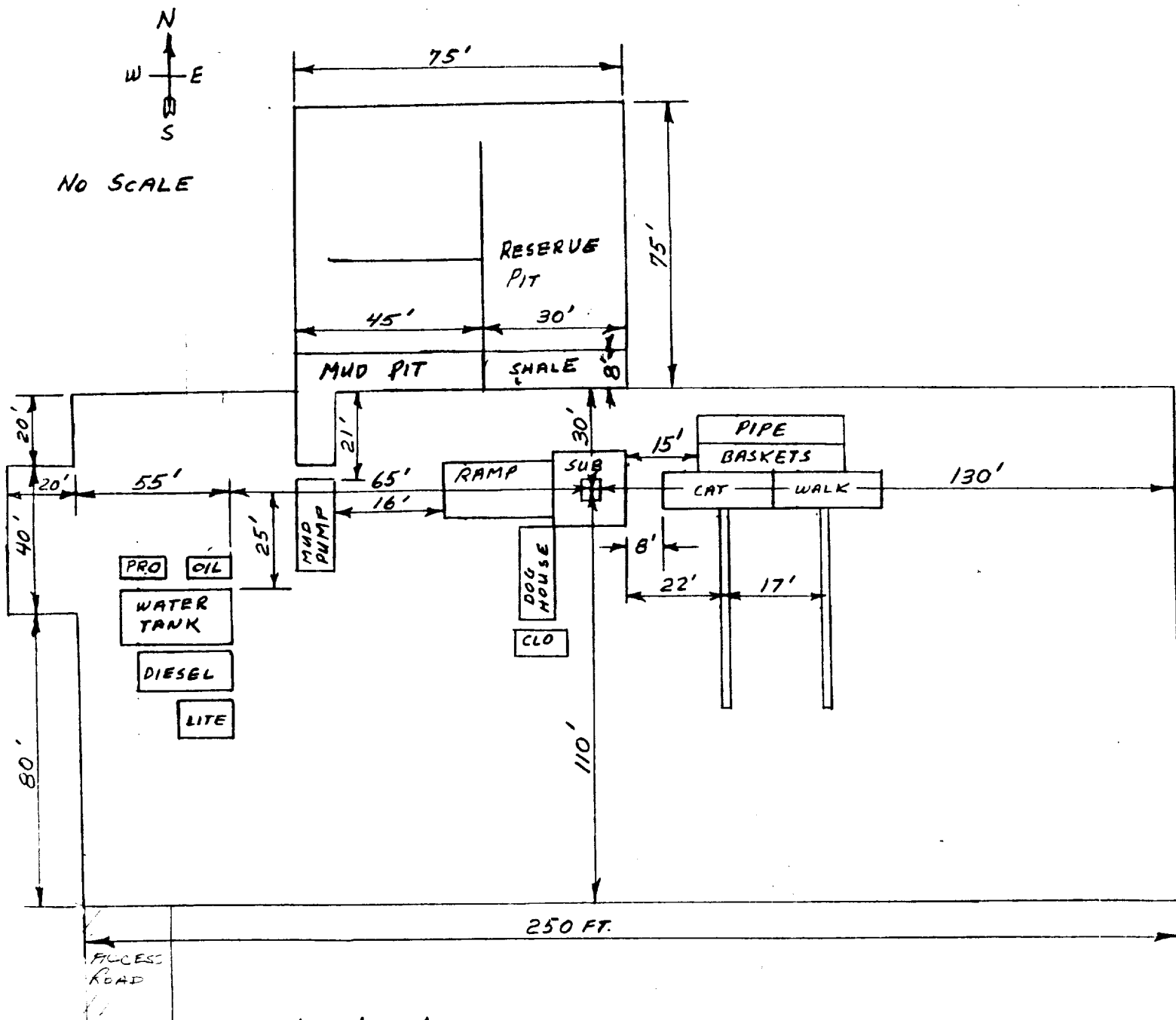
Oil: None expected.

Gas: Abo between 3450' and 4090'.
4. Proposed Casing Program: See Form 9-331C.
5. Pressure Control Equipment: Blowout Preventer is a Shaffer Type E 10" series 900. See Exhibit "E".
6. Mud Program: See Exhibit "F", Proposed Mud program from Marrs Mud, Inc. dated September 4, 1981.
7. Auxiliary Equipment: Blowout preventer, gas detector, kelly cock, pit level monitor, flow sensors and stabbing valve.
8. Testing, Logging and Coring Program:

Logging: Gamma Ray	Surface to T. D.
FDC/CNL	Inter. Csg. to T. D.
DLL	Inter. Csg. to T. D.

Drill Stem Tests: None planned.

Coring: None planned.
9. No abnormal pressures or temperatures are anticipated. In the event abnormal pressures are encountered the proposed mud program will be modified to increase the mud weight.
10. Anticipated starting date: October 1, 1982.
Anticipated completion of drilling operations: Two weeks.



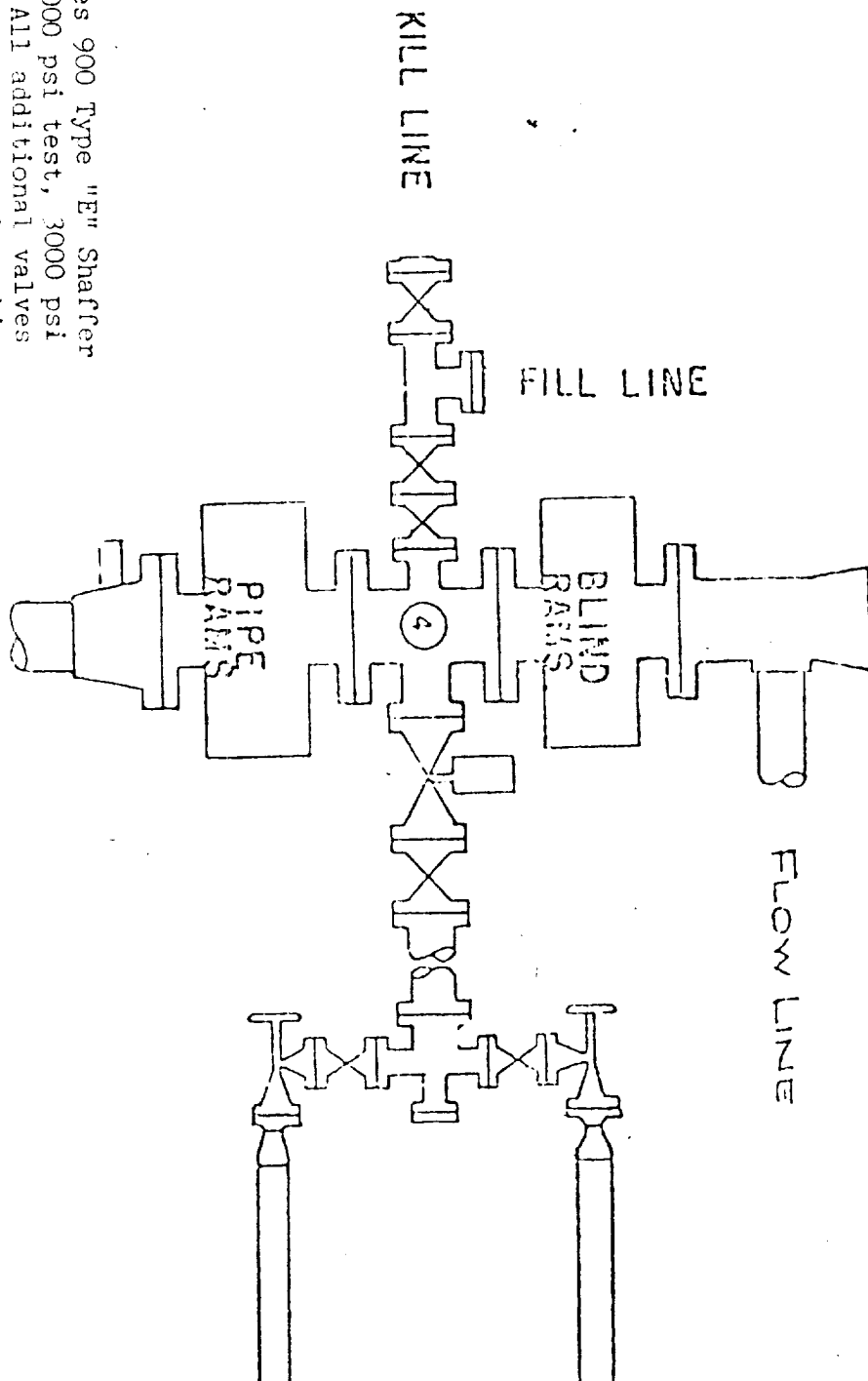
CELLAR 5'X5'X5'

THIS RIG EQUIPTED WITH SHAFFER TYPE E 10" SERIES 900 BOP WITH 4" BLIND RAMS, KILL LINE AND CHOKE MANIFOLD KOOMEY HYDRAULIC CONTROLS AND ACCUMULATOR WITH REMOTE CONTROLS.

SIX FOOT SPACING BETWEEN OIL TANK, WATER TANK, DIESEL TANK AND LIGHT PLANT

20' X 40' STINGER AREA AT WEST END OF LOCATION

WEK DRILLING CO., INC. - Rig 1 & 3
BLOWOUT PREVENTER SPECIFICATION



BOP's are 10" Series 900 Type "E" Shafter
 Double Hydraulic 6000 psi test, 3000 psi
 working pressure. All additional valves
 & connections are the same test & working
 pressures.

EXHIBIT "E"
 BEARD OIL COMPANY
 Coyote Federal 30, Well No. 1
 BOP Diagram