

STATE OF NEW MEXICO
ENERGY AND MINERALS DEPARTMENT

OIL CONSERVATION DIVISION

P. O. BOX 2088

SANTA FE, NEW MEXICO

30-005-61771
Form C-101
Revised 10-1-78

NO. OF COPIES RECEIVED	
DISTRIBUTION	
SANTA FE	
FILE	
U.S.G.S.	
LAND OFFICE	
OPERATOR	

SEP 14 1982

5A. Indicate Type of Lease
STATE ☒ FEE ☐
5. State Oil & Gas Lease No.
OG 4681

APPLICATION FOR PERMIT TO DRILL, DEEPEN, OR PLUG BACK

1a. Type of Work
DRILL ☒ DEEPEN ☐ PLUG BACK ☐
1b. Type of Well
OIL WELL ☒ GAS WELL ☐ OTHER ☐ SINGLE ZONE ☐ MULTIPLE ZONE ☐
2. Name of Operator
STEVENS OPERATING CORPORATION
3. Address of Operator
P. O. Box 2408, Roswell, New Mexico 88201
4. Location of Well
UNIT LETTER 0 LOCATED 990 FEET FROM THE South LINE
1650 FEET FROM THE East LINE OF SEC. 36 TWP. 8S RGE. 28E
11. Elevations (Show whether Dr, RI, etc.)
3949.3
21A. Kind & Status Plug. Bond
Statewide
21B. Drilling Contractor
Artesia Fishing Pool
19. Proposed Depth
2950
19A. Formation
San Andres
20. Rotary or C.T.
Rotary
12. County
Chaves
10. Field and Pool, or Wildcat
Twin Lakes-San Andres Assoc.
22. Approx. Date Work will start
October 15, 1982

23. PROPOSED CASING AND CEMENT PROGRAM

SIZE OF HOLE	SIZE OF CASING	WEIGHT PER FOOT	SETTING DEPTH	SACKS OF CEMENT	EST. TOP
12 1/4"	8 5/8"	23#	130'	75 sx.	Circ.
7 7/8"	4 1/2"	10.5#	2950'	200 sx.	

Will drill with water and mud to T.D., log and if indicated productive, case to T.D. and perforate in productive intervals.

Adequate blowout preventers will be used.

APPROVAL VALID FOR 180 DAYS
PERMIT EXPIRES 3-15-83
UNLESS DRILLING UNDERWAY

IN ABOVE SPACE DESCRIBE PROPOSED PROGRAM: IF PROPOSAL IS TO DEEPEN OR PLUG BACK, GIVE DATA ON PRESENT PRODUCTIVE ZONE AND PROPOSED NEW PRODUCTIVE ZONE. GIVE BLOWOUT PREVENTER PROGRAM, IF ANY.

hereby certify that the information above is true and complete to the best of my knowledge and belief.

Signed [Signature] Title Production Coordinator Date September 13, 1982

(This space for State Use)

APPROVED BY [Signature] TITLE SUPERVISOR, DISTRICT II DATE SEP 15 1982

CONDITIONS OF APPROVAL, IF ANY:

NEW MEXICO OIL CONSERVATION COMMISSION
WELL LOCATION AND ACREAGE DEDICATION PLAT

Form C-102
Supersedes C-128
Effective 1-1-65

All distances must be from the outer boundaries of the Section

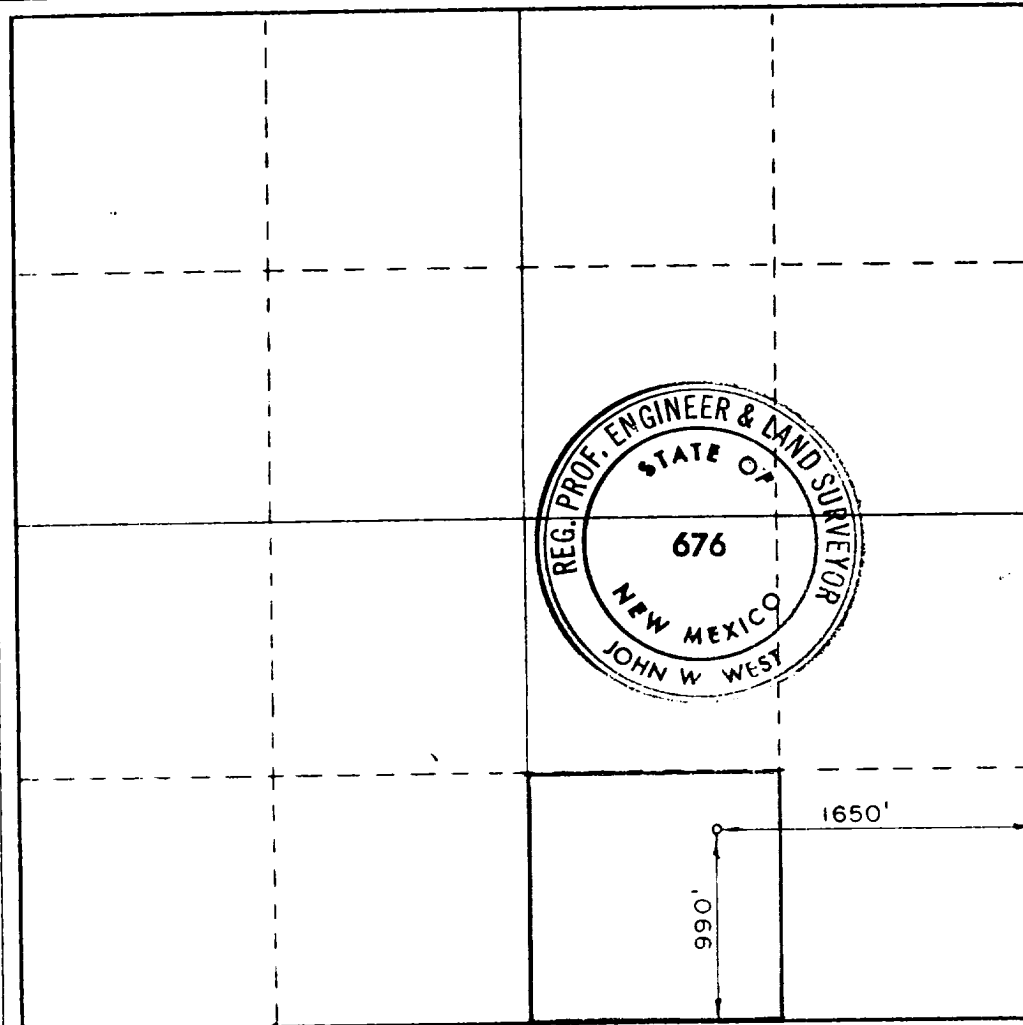
Operator STEVENS OPERATING CO.		Lease CITGO STATE "A"		Well No. 4	
Unit Letter 0	Section 36	Township 8 S	Range 28 E	County CHAVES	
Actual Footage Location of Well: 990 feet from the SOUTH line and 1650 feet from the EAST line					
Ground Level Elev. 3949.3	Producing Formation San Andres		Pool Twin Lakes-San Andres Assoc.		Dedicated Acreage: 40 Acres

1. Outline the acreage dedicated to the subject well by colored pencil or hachure marks on the plat below.
2. If more than one lease is dedicated to the well, outline each and identify the ownership thereof (both as to working interest and royalty).
3. If more than one lease of different ownership is dedicated to the well, have the interests of all owners been consolidated by communitization, unitization, force-pooling, etc?

☐ Yes ☐ No If answer is "yes," type of consolidation _____

If answer is "no," list the owners and tract descriptions which have actually been consolidated. (Use reverse side of this form if necessary.) _____

No allowable will be assigned to the well until all interests have been consolidated (by communitization, unitization, forced-pooling, or otherwise) or until a non-standard unit, eliminating such interests, has been approved by the Commission.



CERTIFICATION

I hereby certify that the information contained herein is true and complete to the best of my knowledge and belief.

Name
Pat Thompson
Position
Production Coordinator
Company
Stevens Operating Corporation
Date
September 13, 1982

I hereby certify that the well location shown on this plat was plotted from field notes of actual surveys made by me or under my supervision, and that the same is true and correct to the best of my knowledge and belief.

Date Surveyed
SEPTEMBER 7, 1982

Registered Professional Engineer and/or Land Surveyor

John W. West
Certificate No. **JOHN W. WEST 676**
PATRICK A. ROMERO 6865
Ronald J. Eidson 3239