

Drawer DD

Artesia, NM 88210 UNITED STATES
DEPARTMENT OF THE INTERIOR

GEOLOGICAL SURVEY

APPLICATION FOR PERMIT TO DRILL, DEEPEN, OR PLUG BACK

1a. TYPE OF WORK

DRILL ☒DEEPEN ☐PLUG BACK ☐

b. TYPE OF WELL

OIL
WELL ☐GAS
WELL ☒OTHER ☐SINGLE
ZONE ☒MULTIPLE
ZONE ☐

2. NAME OF OPERATOR

MESA PETROLEUM CO.

3. ADDRESS OF OPERATOR

1000 VAUGHN BUILDING/MIDLAND, TEXAS 79701-4493

4. LOCATION OF WELL (Report location clearly and in accordance with any State requirements.)

At surface

660' FNL & 1980' FEL NW $\frac{1}{4}$ NE $\frac{1}{4}$ B

At proposed prod. zone

SAME

14. DISTANCE IN MILES AND DIRECTION FROM NEAREST TOWN OR POST OFFICE*

50 miles North/Northeast of Roswell, New Mexico

15. DISTANCE FROM PROPOSED*

LOCATION TO NEAREST
PROPERTY OR LEASE LINE, FT.
(Also to nearest drlg. unit line, if any)

660' / 660'

18. DISTANCE FROM PROPOSED LOCATION*

TO NEAREST WELL, DRILLING, COMPLETED,
OR APPLIED FOR, ON THIS LEASE, FT.

2640'

16. NO. OF ACRES IN LEASE

2513.6

19. PROPOSED DEPTH

4500'

17. NO. OF ACRES ASSIGNED
TO THIS WELL

160

20. ROTARY OR CABLE TOOLS

ROTARY

21. ELEVATIONS (Show whether DF, RT, GR, etc.)

3931' GR

22. APPROX. DATE WORK WILL START*

AUGUST 20, 1982

23.

PROPOSED CASING AND CEMENTING PROGRAM

SIZE OF HOLE	SIZE OF CASING	WEIGHT PER FOOT	SETTING DEPTH	QUANTITY OF CEMENT
14 3/4"	10 3/4"	40.5#	950'	700/300 SURFACE
9 1/2"	7 5/8"	26.4#	1600'	700/300 TIE BACK
6 1/2 or 7 7/8"	4 1/2"	10.5#	4500'	300 COVER ABO

Propose to drill 14 3/4" hole with mud or air to approximately 950' and run 10 3/4" casing. Will cement to surface and test casing with cementing head to 600 psi. Will reduce hole to 9 1/2" and drill on mud or air to approximately 1600' and run 7 5/8" casing if circulation has been lost and cement with sufficient amounts to tie-back to 10 3/4" casing. Will then reduce hole to 6 1/2" or 6 3/4", test BOP's and casing and drill to total depth. If hole conditions are favorable, the 7 5/8" casing will be omitted and the hole will be reduced to 7 7/8" and drilled to total depth. Either 4 1/2" or 5 1/2" casing will be run as production casing depending upon hole size drilled to TD.

Operator's gas sales are dedicated.

OIL & GAS
U.S. GEOLOGICAL SURVEY
ROSWELL, NEW MEXICO

XC: MMS (7), TLS, CEN RCDS, ACCTG, MEC, LAND, ROSWELL, REM, FILE, (PARTNERS)

IN ABOVE SPACE DESCRIBE PROPOSED PROGRAM: If proposal is to deepen or plug back, give data on present productive zone and proposed new productive zone. If proposal is to drill or deepen directionally, give pertinent data on subsurface locations and measured and true vertical depths. Give blowout preventer program, if any.

24.

SIGNED

R. E. Mathis by *[Signature]*

REGULATORY COORDINATOR

DATE

7-30-82

(This space for Federal or State office use)

PERMIT NO.

APPROVED BY

CONDITIONS OF APPROVAL, IF ANY

APPROVED

(Orig. Sgd.) GEORGE H. STEWART

SEP 16 1982

JAMES A. GILLHAM
DISTRICT SUPERVISOR

APPROVAL DATE

TITLE

DATE

AUG 2 1982

Posted ID-1
9-24-82
APF + BK

STATE OF NEW MEXICO
ENERGY AND MINERALS DEPARTMENT

SANTA FE, NEW MEXICO 8750

All distances must be from the outer boundaries of the Section.

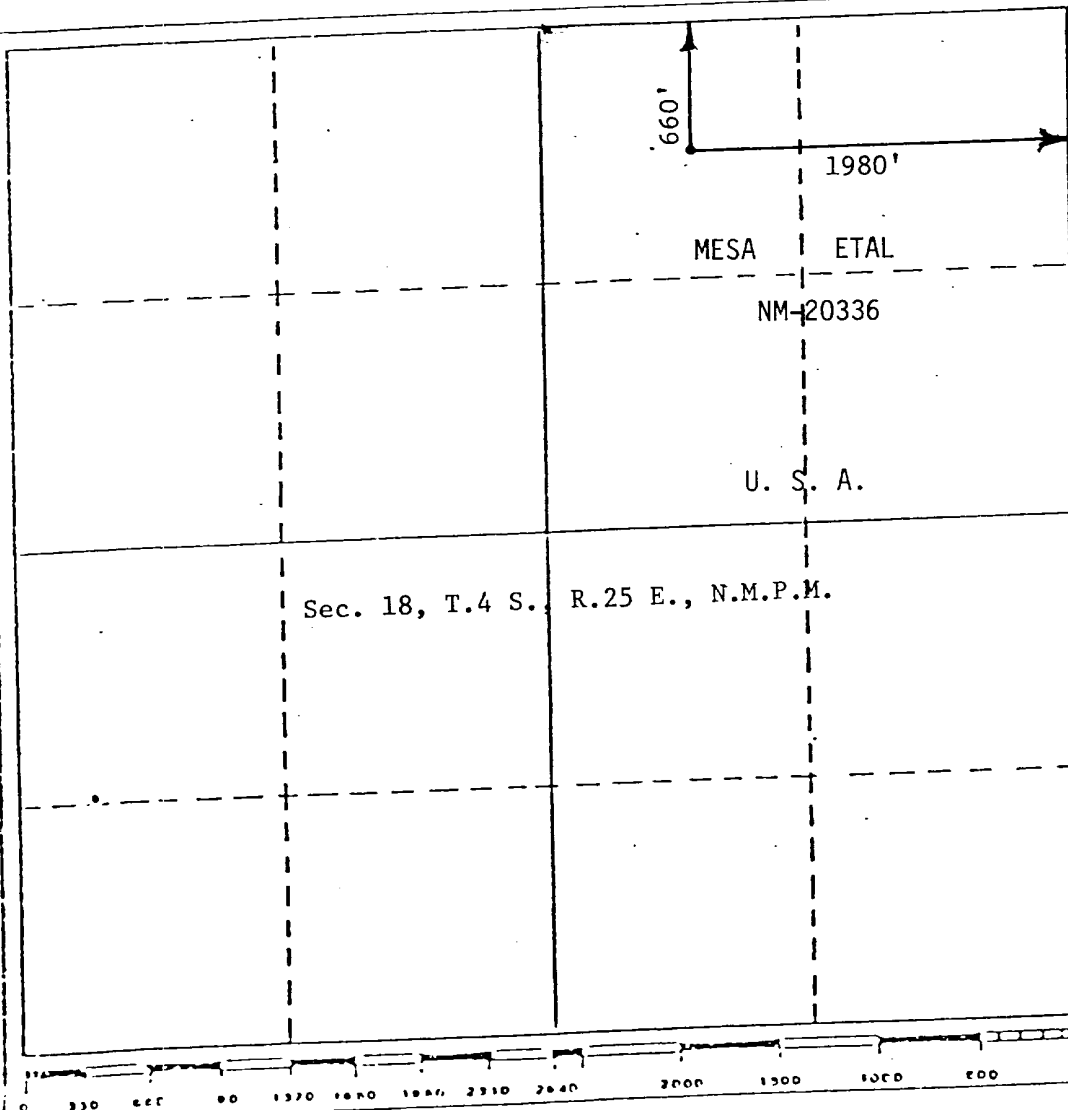
Operator Mesa Petroleum Co.		Lease Wylie Federal		Well No. #5
Unit Letter B	Section 18	Township 4 South	Range 25 East	County Chaves
Actual Postage Location of Well: 660 feet from the North line and 1980 feet from the East line				
Ground Level Elev. 3931	Producing Formation ABO	Pool UNDESIGNATED - <i>fill</i>	Dedicated Acreage: NE/4 160 Acres	

1. Outline the acreage dedicated to the subject well by colored pencil or hachure marks on the plat below.
2. If more than one lease is dedicated to the well, outline each and identify the ownership thereof (both as to working interest and royalty).
3. If more than one lease of different ownership is dedicated to the well, have the interests of all owners been consolidated by communitization, unitization, force-pooling, etc?

☐ Yes ☐ No If answer is "yes," type of consolidation _____

If answer is "no," list the owners and tract descriptions which have actually been consolidated. (Use reverse side of this form if necessary.) _____

No allowable will be assigned to the well until all interests have been consolidated (by communitization, unitization, forced-pooling, or otherwise) or until a non-standard unit, eliminating such interests, has been approved by the Division.



CERTIFICATION

I hereby certify that the information contained herein is true and complete to the best of my knowledge and belief.

M. P. Houston

Name

M. P. HOUSTON

Position

OPERATIONS MANAGER

Company

MESA PETROLEUM CO.

Date

JULY 30, 1982

I hereby certify that the well location shown on this plat was plotted from field notes of actual surveys made by me or under my supervision, and that the same is true and correct to the best of my knowledge and belief.

Date Surveyed

July 19, 1982

Registered Professional Engineer and/or Land Surveyor

John D. Jaquess, E. & L.S.

Certificate No.

6290

APPLICATION FOR PERMIT TO DRILL

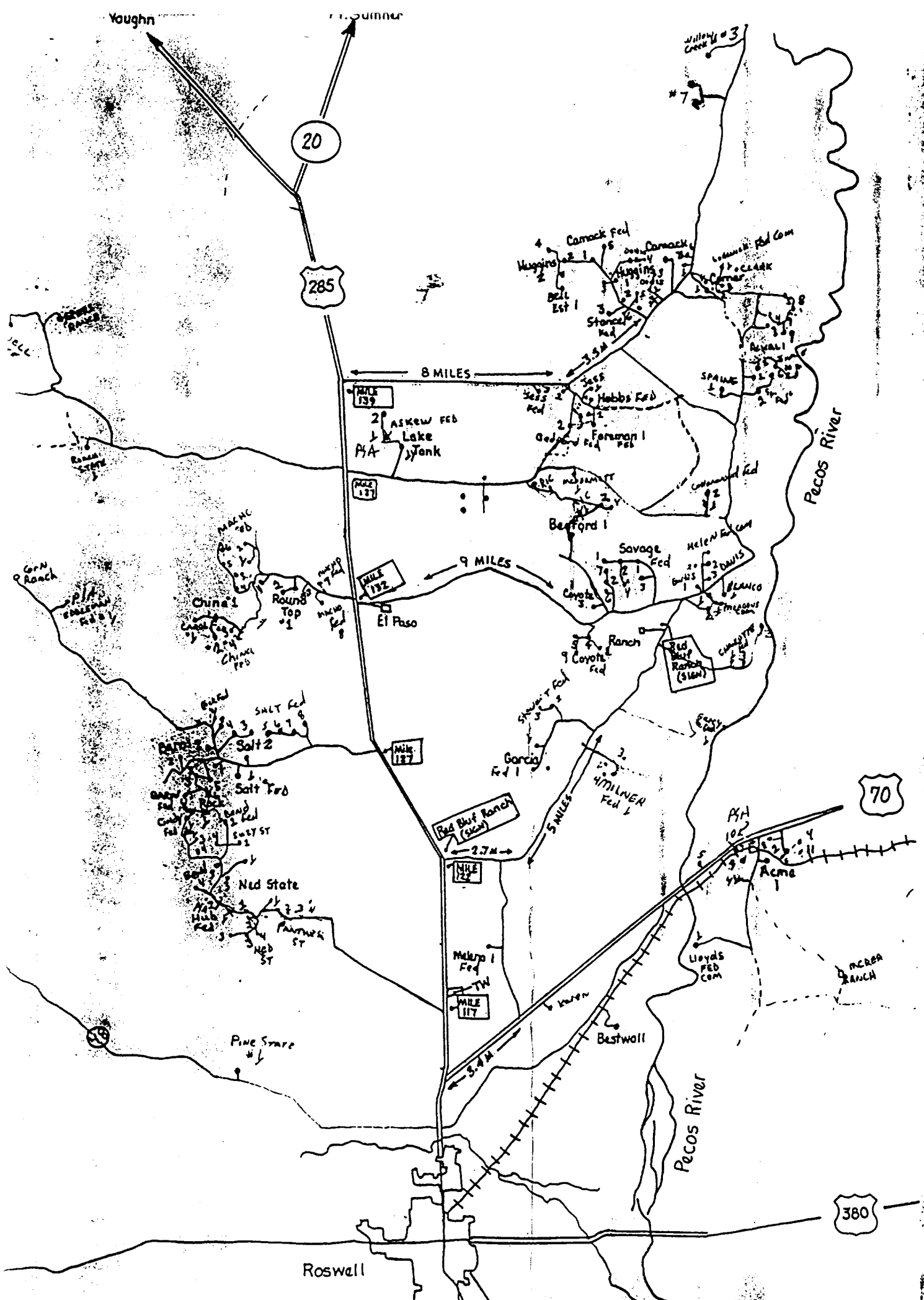
MESA PETROLEUM CO.
WYLIE FEDERAL #5
660' FNL & 1980' FEL, SEC 18, T4S, R25E
CHAVES COUNTY, NEW MEXICO

LEASE NO. NM-20336

In conjunction with Form 9331-C, Application For Permit to Drill subject well, the following additional information is provided:

1. Applicable portions of the GENERAL REQUIREMENTS FOR OIL AND GAS OPERATIONS ON FEDERAL LEASES, Roswell District, Geological Survey of September 1, 1980 will be adhered to.
2. Geological markers are estimated as follows:

SEVEN RIVERS	Surface
SAN ANDRES	530'
GLORIETA	1365'
YESO	2265'
TUBB	2907'
ABO	3552'
3. Hydrocarbon bearing strata may occur in the Abo formation(s). No fresh water is expected to be encountered below 950'.
4. The Casing and Blowout Preventer Program will be determined by hole conditions as encountered. See Exhibit VI. Anticipate drilling with mud, air or foam using ram type preventer and rotating head for well control. The 10 3/4" casing will be set at approximately 950' to protect any fresh water zones and cemented to the surface. The 7 5/8" casing will be set at approximately 1600' if water zones have been encountered or omitted if not and ram type preventers installed. Sufficient amounts and kinds of cement would be used to ensure any water, gas, or oil zones encountered are isolated and shut off down to the casing point if run. The 4 1/2" production casing will be set at total depth or shallower depending upon the depth of the deepest commercial hydrocarbon bearing strata encountered.
5. No drill stem test or coring program is planned. The logging program may consist of a GR-CNL from surface total depth and FDC from casing point to total depth.
6. Anticipated drilling time is ten days with completion operations to follow as soon as a completion unit is available.




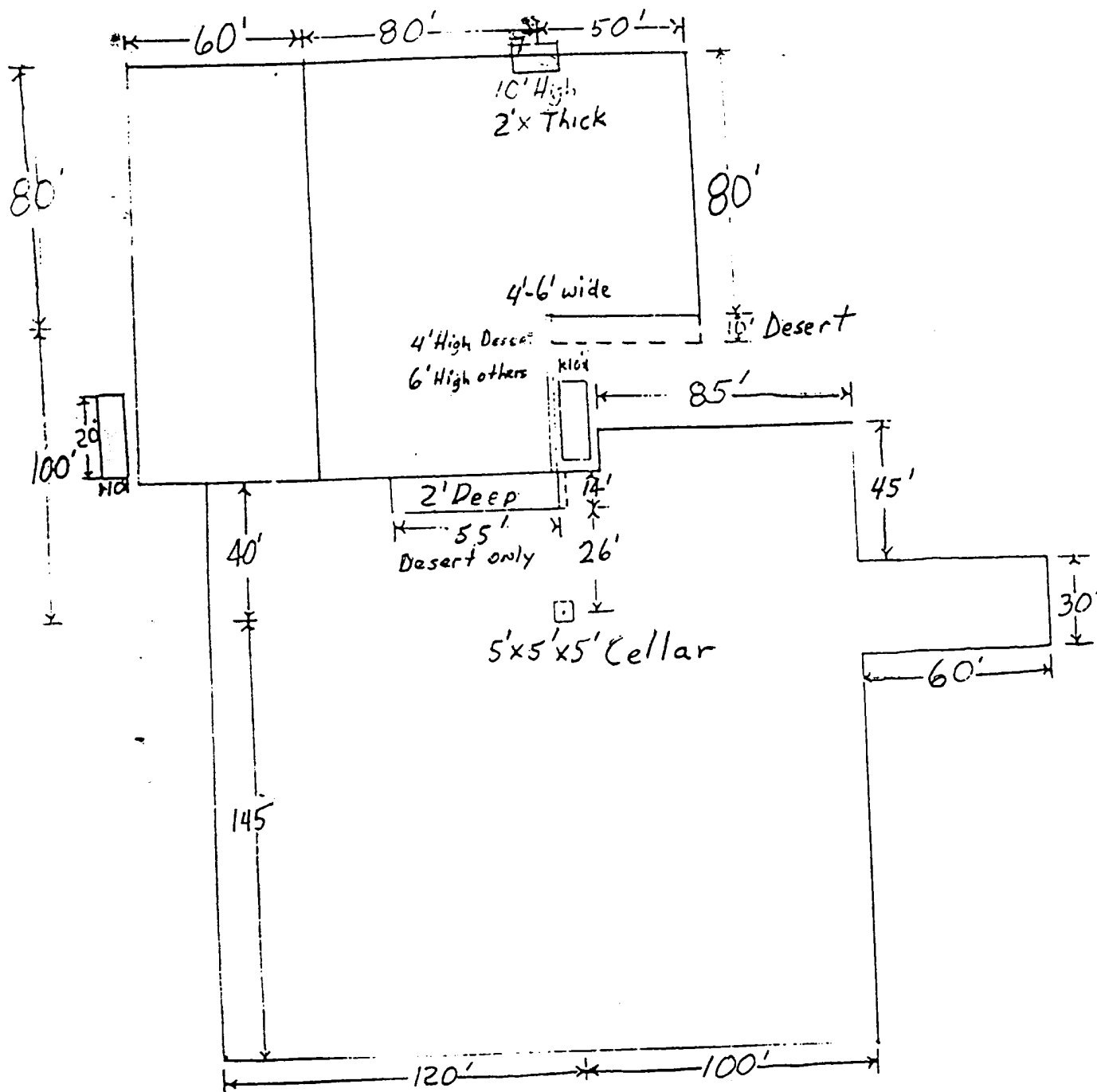

MESA
 PETROLEUM CO.
 PERMAN BASIN DIVISION

EXHIBIT I

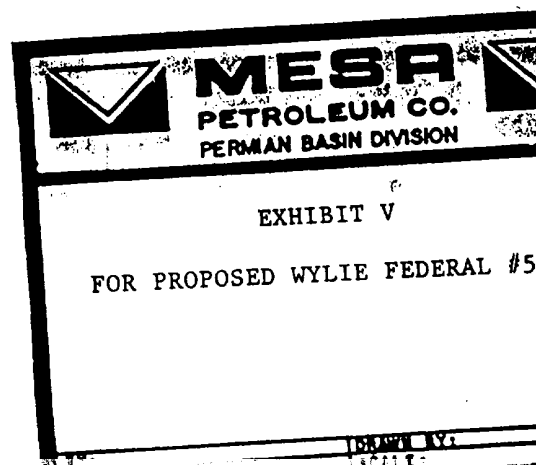
 AREA ROADWAYS FOR PROPOSED
 WYLIE FEDERAL #5

1000
 1000
 1000

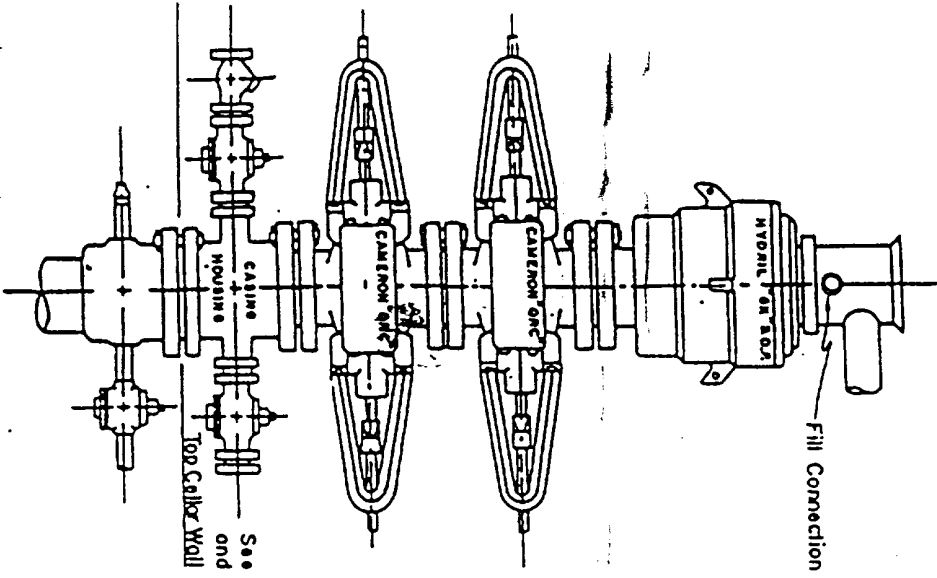
1000
 1000
 1000



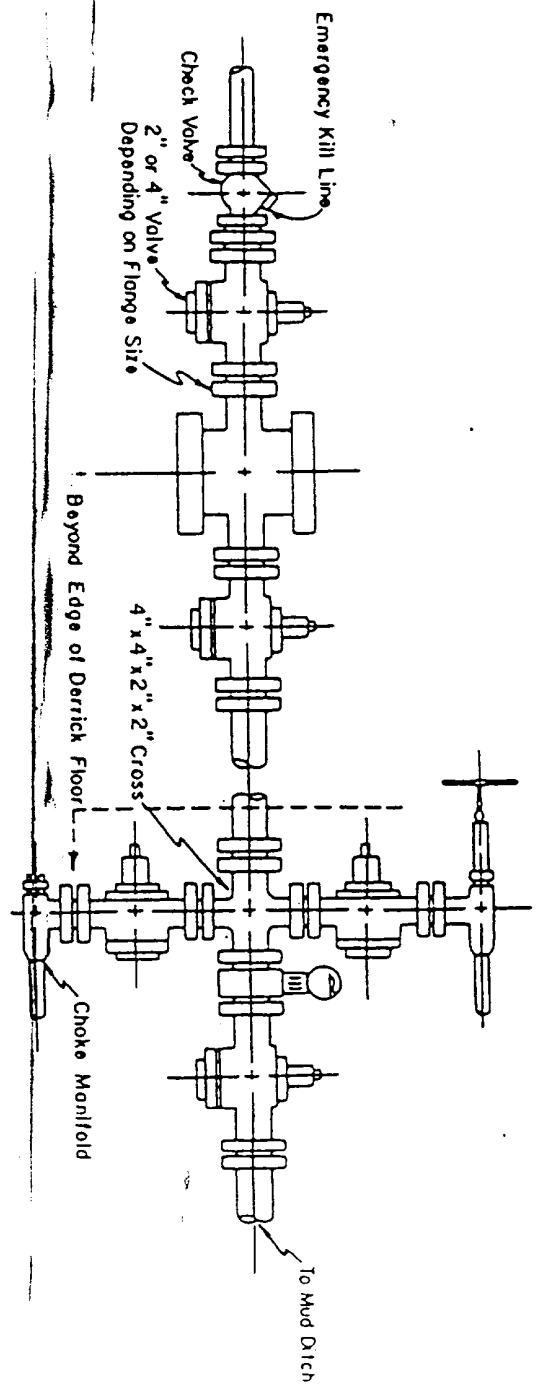
6"-8" Watered & Compacted Caliche
ON PAD & ROAD IF NEEDED



Blow-out Preventers hydril and choke manifold are all 900 Series



3,000 PSI WORKING PRESSURE
BLOW-OUT PREVENTER HOOK-UP

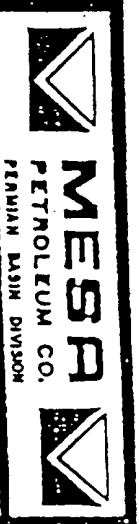


3,000 PSI WORKING PRESSURE
KILL, CHOKE, AND FILL CONNECTIONS

DETAIL OF 4" FLOW LINE CHOKE ASSEMBLY

Minimum assembly for 3,000 PSI working pressure will consist of three preventers.
The bottom and middle preventers may be Cameron.

NOTE: HYDRIL not installed on shallow-low pressure wells.
RAM type BOPs are API 10" X 3000 PSI



E X H I B I T
V I