

OIL CONS. COMMISSION

Lower DD

Artesia, NM 88210

UNITED STATES
DEPARTMENT OF THE INTERIOR
GEOLOGICAL SURVEYSUBMIT IN TRIPPLICATE*
(Other instructions on
reverse side)Form approved.
Budget Bureau No. 42-R1425.

30-005-61786

APPLICATION FOR PERMIT TO DRILL, DEEPEN, OR PLUG BACK

1a. TYPE OF WORK

DRILL ☒DEEPEN ☐PLUG BACK ☐

b. TYPE OF WELL

OIL
WELL ☒GAS
WELL ☐OTHER ☐

2. NAME OF OPERATOR

Harper Oil Company

3. ADDRESS OF OPERATOR

Gibraltar Bldg. Suite 310, Midland, Texas 79701

4. LOCATION OF WELL (Report location clearly and in accordance with any State requirements.)*

At surface

2310' FEL & 660' FNL NW/4 NE/4

At proposed prod. zone

Same

14. DISTANCE IN MILES AND DIRECTION FROM NEAREST TOWN OR POST OFFICE*

13 miles north of Elkins, New Mexico

15. DISTANCE FROM PROPOSED*

LOCATION TO NEAREST
PROPERTY OR LEASE LINE, FT.
(Also to nearest drlg. unit line, if any)

660' N

18. DISTANCE FROM PROPOSED LOCATION*
TO NEAREST WELL, DRILLING, COMPLETED,
OR APPLIED FOR, ON THIS LEASE, FT.

N/A

16. NO. OF ACRES IN LEASE

920

19. PROPOSED DEPTH

7400'±

17. NO. OF ACRES ASSIGNED
TO THIS WELL

40

20. ROTARY OR CABLE TOOLS

Rotary

21. ELEVATIONS (Show whether DF, RT, GR, etc.)

3964.9' GR

22. APPROX. DATE WORK WILL START*

Sept. 28, 1982

23.

PROPOSED CASING AND CEMENTING PROGRAM

SIZE OF HOLE	SIZE OF CASING	WEIGHT PER FOOT	SETTING DEPTH	QUANTITY OF CEMENT
17 1/2"	13 3/8"	48.0#	350'±	350 sx(Circulate)
12 1/2"	8 5/8"	24.0#	1750'±	950 sx(Circulate)
7 7/8"	5 1/2"	15.5 & 17.0#	TD	625 sx

Proposed plans are to drill to the Montoya formation and test for possible commercial production. Possibly test intermediate zones of interest.

BOP sketch is attached.

Gas not dedicated.

*Location moved 4 times due to archaeology.

RECEIVED
SEP 15 1982OIL & GAS
U.S. GEOLOGICAL SURVEY
ROSOWELL, NEW MEXICO

IN ABOVE SPACE DESCRIBE PROPOSED PROGRAM: If proposal is to deepen or plug back, give data on present productive zone and proposed new productive zone. If proposal is to drill or deepen directionally, give pertinent data on subsurface locations and measured and true vertical depths. Give blowout preventer program, if any.

24.

SIGNED

TITLE Agent

DATE 9/14/82

(This space for Federal or State office use)

PERMIT NO.

(Orig. Sgd.) GEORGE H. STEWART

APPROVAL DATE

APPROVED BY

TITLE

DATE

CONDITIONS OF APPROVAL

APPROVAL BY ANITA GILHAM
DISTRICT SUPERVISOR

*See Instructions On Reverse Side

**NEW MEXICO OIL CONSERVATION COMMISSION
WELL LOCATION AND ACREAGE DEDICATION PLAT**

Form O-112
Supersedes O-118
Effective 1-1-65

All distances must be from the outer boundaries of the Section

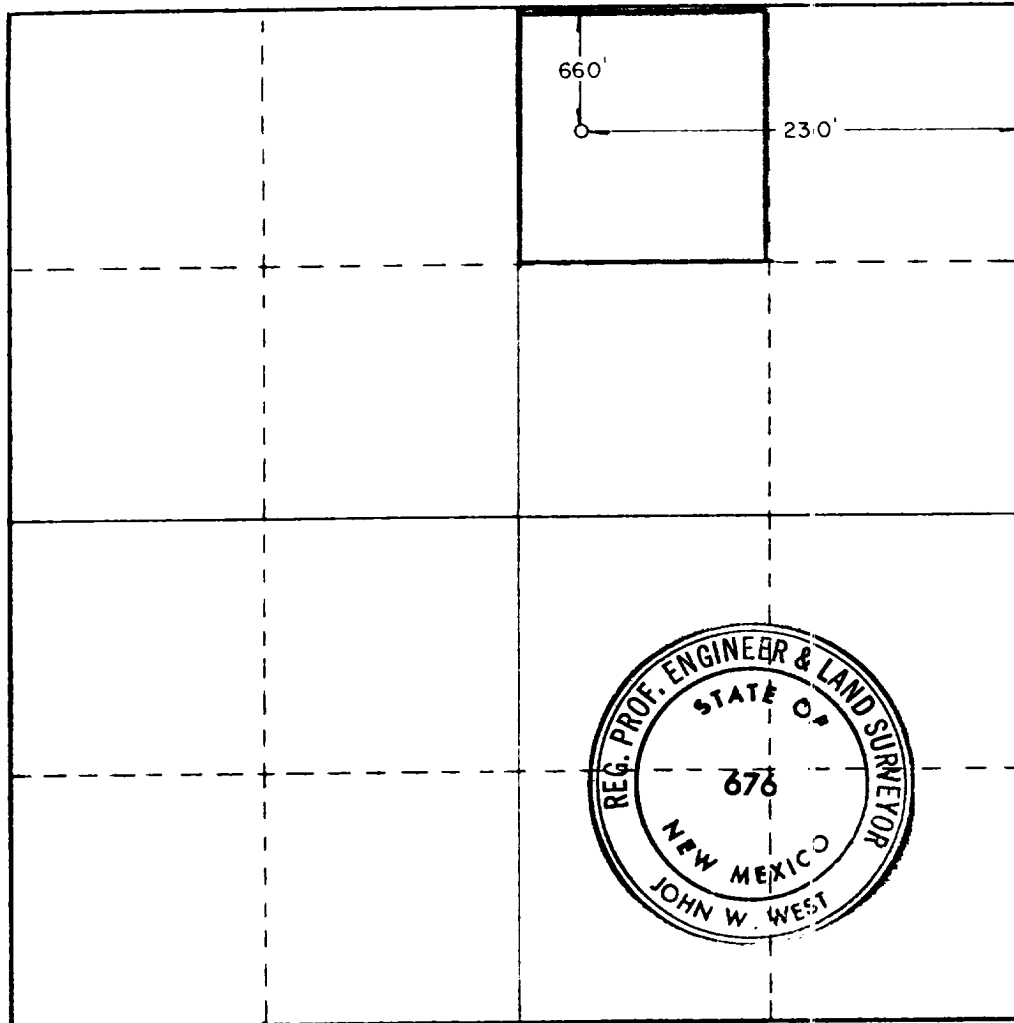
Operator Harper Oil Co.			Lease Yates Federal		Well No. 1
Unit Letter B	Section 10	Township 5 South	Range 27 East	County Chaves	
Actual Footage Location of Well: <div style="display: flex; justify-content: space-between;"> 660 feet from the north line and 2310 feet from the east line </div>					
Ground Level Elev. 3964.9'	Producing Formation MONTOYA	Pool WILDCAT	Dedicated Acreage 40 Acres		

1. Outline the acreage dedicated to the subject well by colored pencil or hachure marks on the plat below.
2. If more than one lease is dedicated to the well, outline each and identify the ownership thereof (both as to working interest and royalty).
3. If more than one lease of different ownership is dedicated to the well, have the interests of all owners been consolidated by communitization, unitization, force-pooling, etc?

☐ Yes ☐ No If answer is "yes," type of consolidation _____

If answer is "no," list the owners and tract descriptions which have actually been consolidated (Use reverse side of this form if necessary.) _____

No allowable will be assigned to the well until all interests have been consolidated (by communitization, unitization, forced-pooling, or otherwise) or until a non-standard unit, eliminating such interests, has been approved by the Commission.



CERTIFICATION

I hereby certify that the information contained herein is true and complete to the best of my knowledge and belief.

Name *Terry W. Franklin*

Position
AGENT

Company
HARPER OIL COMPANY

Date
9/15/82

I hereby certify that the well location shown on this plat was plotted from field notes of actual surveys made by me or under my supervision, and that the same is true and correct to the best of my knowledge and belief.

Date Surveyed
8-25-82

Registered Professional Engineer and/or Land Surveyor

John W. West

Certificate No. **JOHN W. WEST 676**
PATRICK A. ROMERO 6663
Ronald J. Eidson 3239

0 330 660 990 1320 1650 1980 2310 2640 2970 3300 3630 3960 4290 4620 4950 5280 5610 5940 6270 6600

APPLICATION TO DRILL

Harper Oil Company
Yates Federal No.1
2310' FEL & 660' FNL
Sec. 10, T5S, R27E
Chaves County, N.M.

RECEIVED

SEP 23 1982

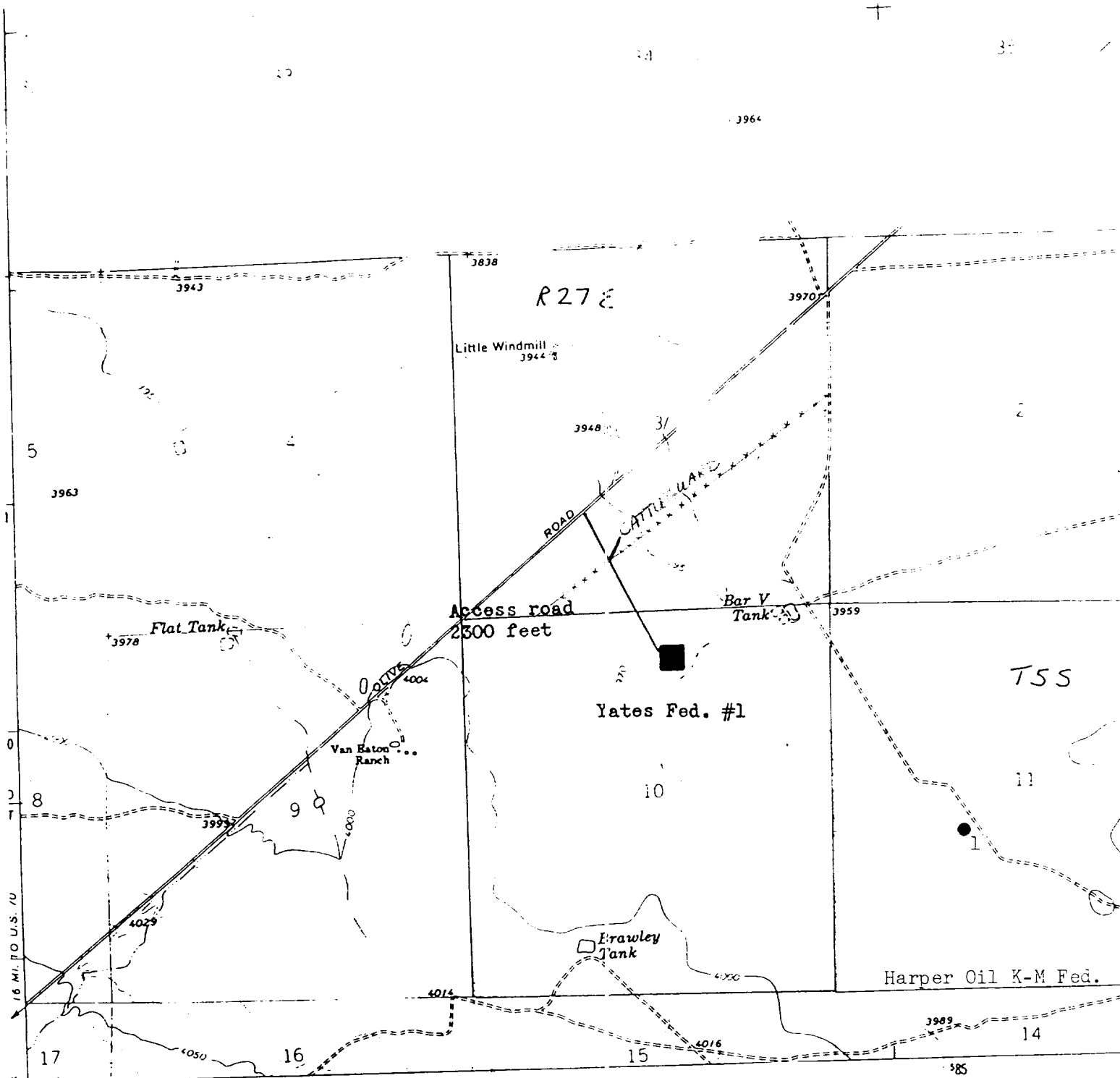
O. C. D.
ARTESIA, OFFICE

NM - 16091

The following answers are provided for your consideration in response to your outline under Section II of Bulletin NTL-6:

1. Geologic Name of Surface Formation: Aeolian
2. Drilling Tools and Associated Equipment: Conventional rotary drilling tools using mud for the circulation medium.
3. Proposed Drilling Depth: 7400'±
4. Estimated Geological Marker Tops:

San Andres	1320'	Pennsylvanian	6022'
Glorietta	2435'	Mississippian	6553'
Abo	4268'	Strawn	6886'
Wolfcamp	5282'	Montoya	7185'
5. Mineral Bearing Formation: Oil bearing at 7000'±
6. Casing Program:
 - 13 3/8" Casing - Set approximately 350' of 13 3/8", 48.0#, ST&C casing. Cement to surface using 350 sx of cement.
 - 8 5/8" Casing - Set approximately 1750' of 8 5/8", 24.0#, ST&C casing. Cement to surface using 950 sx of cement.
 - 5 1/2" Casing - Set 5 1/2", 15.5 & 17.0#, ST&C casing to total depth. Cement with 625 sx of cement to cover all oil, gas, and water zones.
7. Pressure Control Equipment: Blowout preventer will consist of a double-ram preventer rated to 3000 psi working pressure. BOP diagram is attached.



07°30"

Mapped, edited, and
Control by USGS and U
Topography by photogra
photographs taken 1966. Field checked 1967

Polyconic projection. 1927 North American datum
10,000-foot grid based on New Mexico coordinate system,
east zone
1000-meter Universal Transverse Mercator grid ticks,
zone 13, shown in blue

Fine red dashed lines indicate selected fence lines

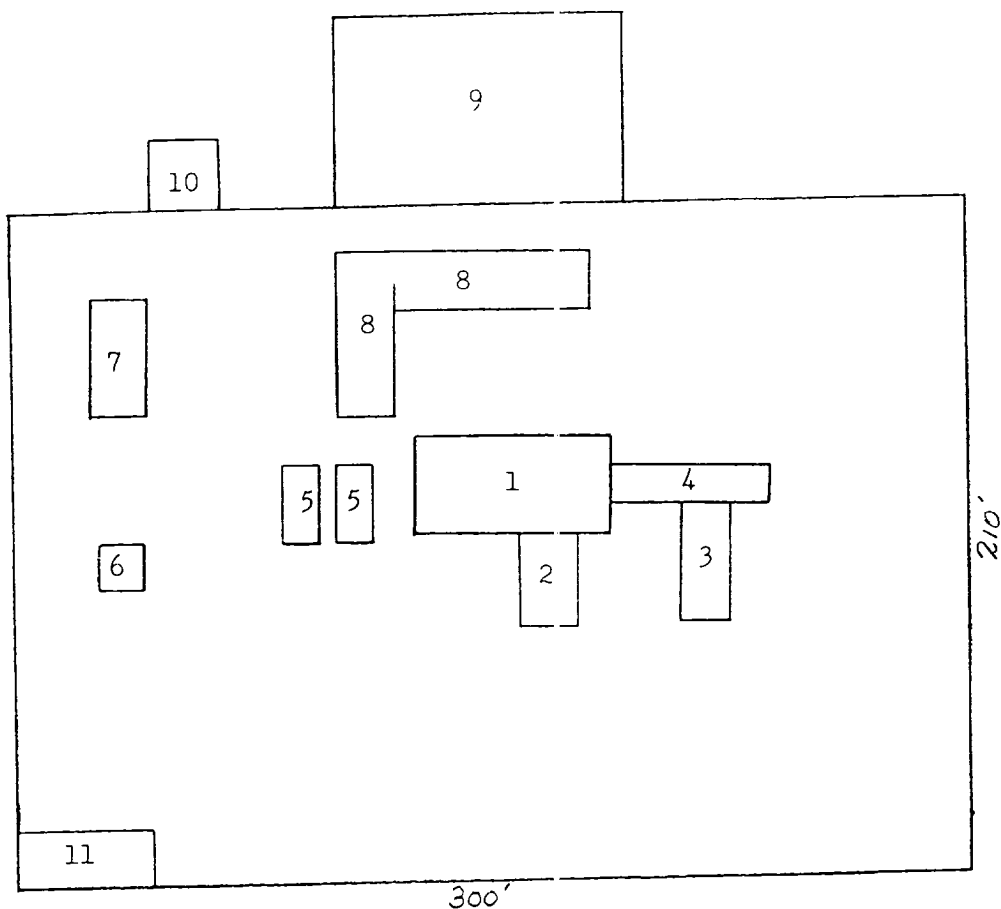
**Location Map, Harper Oil Company, Yates Federal Well No. 1
(Alternate Location #3). U.S.G.S. 7.5' series OLIVE, NM
1967. Dark areas show areas surveyed. Arrow shows reroute
of alternate access road around GRCNM 33.**

U. M. GRID AND 1967 MAGNETIC NORTH
DECLINATION AT CENTER OF SHEET

EXHIBIT 'B'

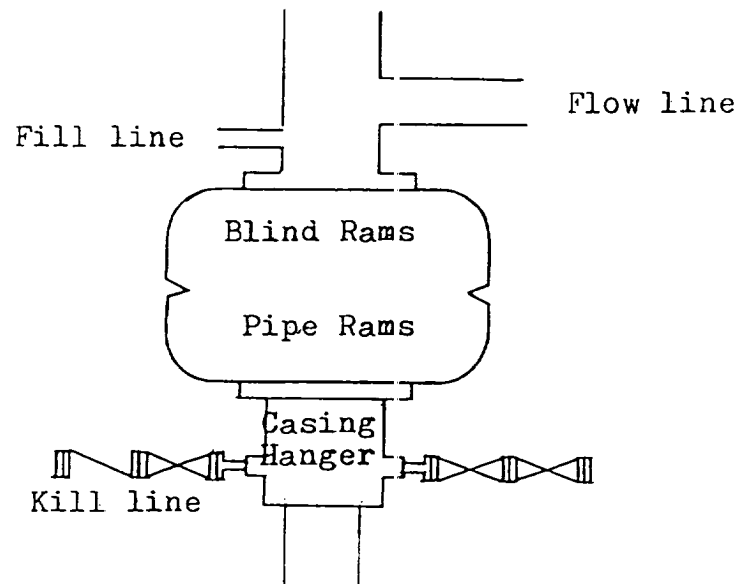
Harper Oil Company
Yates Federal No. 1
2310' FEL & 660' FNL
Sec. 10, T5S, R27E
Chaves County, N.M.

↑
N



- | | |
|-----------------|-------------------|
| 1. Substructure | 7. Water Tank |
| 2. Doghouse | 8. Working Pits |
| 3. Piperacks | 9. Reserve Pit |
| 4. Catwalk | 10. Trash Pit |
| 5. Mud Pumps | 11. Trailer House |
| 6. Light Plant | |

EXHIBIT 'C'
Harper Oil Company
Yates Federal No. 1
2310' FEL & 660' FNL
Sec. 10, T5S, R27E
Chaves County, N.M.



Blowout Preventer
3000 psi working pressure