

UNITED STATES
DEPARTMENT OF THE INTERIOR
GEOLOGICAL SURVEY
NM OIL CONSERVATION COMMISSION
Artesia, NM 88210

30-115-61823

APPLICATION FOR PERMIT TO DRILL, DEEPEN, OR PLUG BACK

1a. TYPE OF WORK

DRILL ☒DEEPEN ☐PLUG BACK ☐

b. TYPE OF WELL

OIL WELL ☐GAS WELL ☒

OTHER

SINGLE ZONE ☒ RECEIVED MULTIPLE ZONE ☐

2. NAME OF OPERATOR

Yates Petroleum Corporation

NOV 4 1982

3. ADDRESS OF OPERATOR

207 S. 4th, Artesia, New Mexico 88210 C.D.

4. LOCATION OF WELL (Report location clearly and in accordance with any State requirements.)

At surface

660' FNL and 660' FWL

At proposed prod. zone

same

14. DISTANCE IN MILES AND DIRECTION FROM NEAREST TOWN OR POST OFFICE*

Approximately 11 miles NE of Roswell, NM.

15. DISTANCE FROM PROPOSED*

LOCATION TO NEAREST
PROPERTY OR LEASE LINE, FT.
(Also to nearest drig. unit line, if any)

660'

16. NO. OF ACRES IN LEASE

740

18. DISTANCE FROM PROPOSED LOCATION*
TO NEAREST WELL, DRILLING, COMPLETED,
OR APPLIED FOR, ON THIS LEASE, FT.

19. PROPOSED DEPTH

4250'

21. ELEVATIONS (Show whether DF, RT, GR, etc.)

3562.2' GL

23.

PROPOSED CASING AND CEMENTING PROGRAM

SIZE OF HOLE	SIZE OF CASING	WEIGHT PER FOOT	SETTING DEPTH	QUANTITY OF CEMENT
14 3/4"	10 3/4"	40.5# J-55	800'	700 sx circulated
7 7/8"	4 1/2"	9.5# J-55	TD	350 sx circulated

We propose to drill and test the Abo and intermediate formations. Approximately 800' of surface casing will be set and cement circulated to shut off gravel and caving. If needed (lost circulation) 8 5/8" intermediate casing will be run to 1500' and cemented with enough cement calculated to tie back into the surface casing. If commercial, production casing will be run and cemented with adequate cover, perforated, and stimulated as needed for production.

MUD PROGRAM: FW gel and LCM to 800', Brine to 3500', Brine & KCL water to TD

BOP PROGRAM: BOP's will be installed at the offset and tested daily.

GAS NOT DEDICATED.

IN ABOVE SPACE DESCRIBE PROPOSED PROGRAM: If proposal is to deepen or plug back, give data on present productive zone and proposed new productive zone. If proposal is to drill or deepen directionally, give pertinent data on subsurface locations and measured and true vertical depths. Give blowout preventer program, if any.

24. SIGNED Cy Cowan TITLE Regulatory Coordinator DATE 10/22/82

(This space for Federal or State office use)

(Sgd.) GEORGE H. STEWART

PERMIT NO.

NOV 2 1982

APPROVAL DATE

APPROVED BY

CONDITIONS OF APPROVAL, IF ANY:

TITLE

DATE

RECEIVED

OCT 25 1982

U.S. G.S.
MINERAL INVESTIGATION
ROSWELL, NEW MEXICO

NEW MEXICO OIL CONSERVATION COMMISSION
WELL LOCATION AND ACREAGE DEDICATION PLAT

Form C-102
Supersedes C-128
Effective 1-1-65

All distances must be from the outer boundaries of the Section.

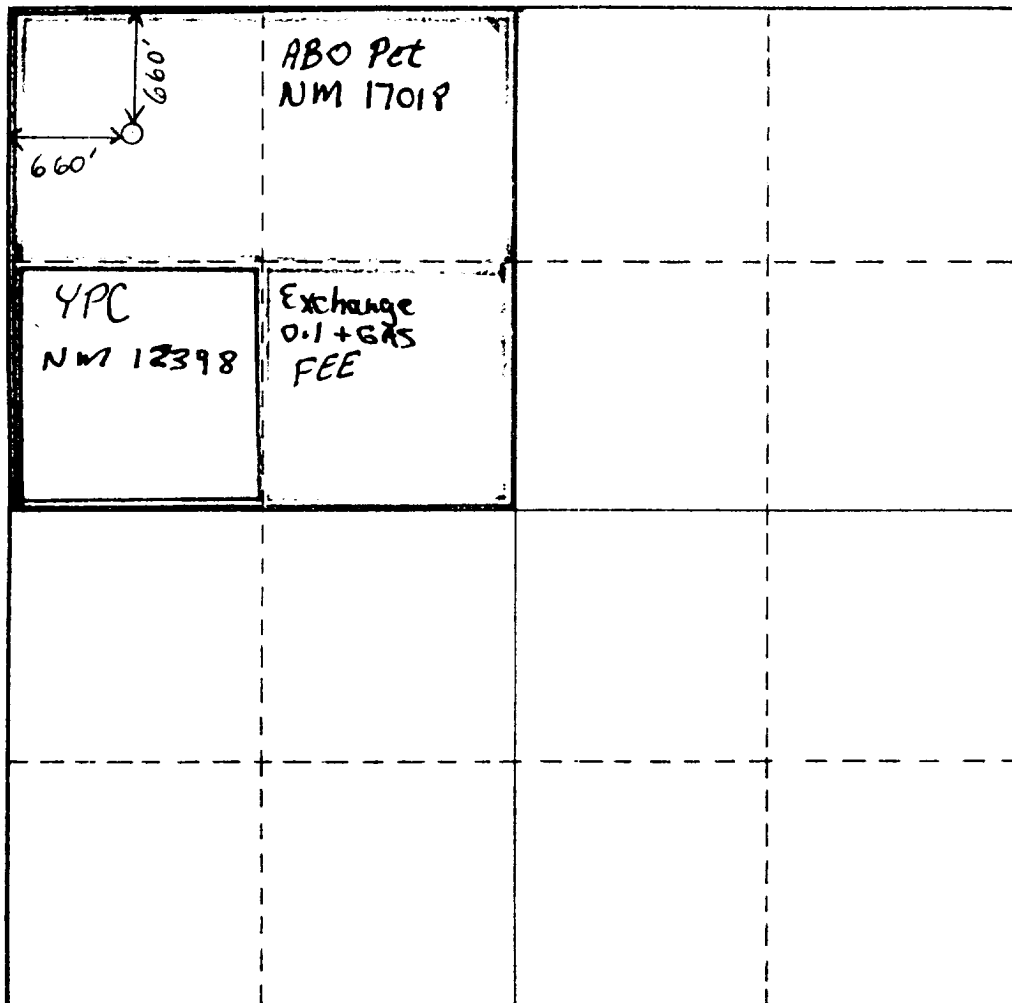
Operator YATES PETROLEUM CORPORATION			Lease Abo "VT" Federal		Well No. 2
Unit Letter D	Section 29	Township 9 South	Range 25 East	County Chaves	
Actual Footage Location of Well: 660 feet from the North line and 660 feet from the West line					
Ground Level Elev. 3562.2'	Producing Formation ABO		Pool Kind. Pecos Slope ABO		Dedicated Acreage: 160 Acres

1. Outline the acreage dedicated to the subject well by colored pencil or hachure marks on the plat below.
2. If more than one lease is dedicated to the well, outline each and identify the ownership thereof (both as to working interest and royalty).
3. If more than one lease of different ownership is dedicated to the well, have the interests of all owners been consolidated by communitization, unitization, force-pooling, etc?

☐ Yes ☒ No If answer is "yes," type of consolidation **To be Communitized**

If answer is "no," list the owners and tract descriptions which have actually been consolidated. (Use reverse side of this form if necessary.) _____

No allowable will be assigned to the well until all interests have been consolidated (by communitization, unitization, forced-pooling, or otherwise) or until a non-standard unit, eliminating such interests, has been approved by the Commission.



CERTIFICATION

I hereby certify that the information contained herein is true and complete to the best of my knowledge and belief.

Cy Cowan

Name

Cy Cowan

Position

Regulatory Coordinator

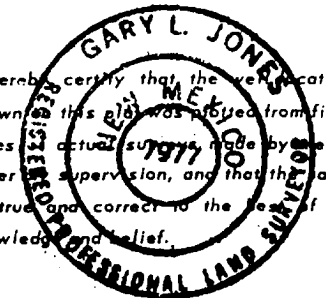
Company

Yates Petroleum Corp.

Date

10/22/82

I hereby certify that the verification shown on this plat was taken from field notes of actual survey made by me or under my supervision, and that the same is true and correct to the best of my knowledge and belief.



Date Surveyed

October 20, 1982

Registered Professional Engineer
and/or Land Surveyor

Gary L. Jones

Certificate No.

7977

YATES PETROLEUM CORPORATION
A , "VT" Federal #2
660' FNL and 660' FWL
Sec. 29-T9S-R25E

In conjunction with Form 9-331C, Application for Permit to Drill subject well, Yates Petroleum Corporation submits the following ten items of pertinent information in accordance with USGS requirements.

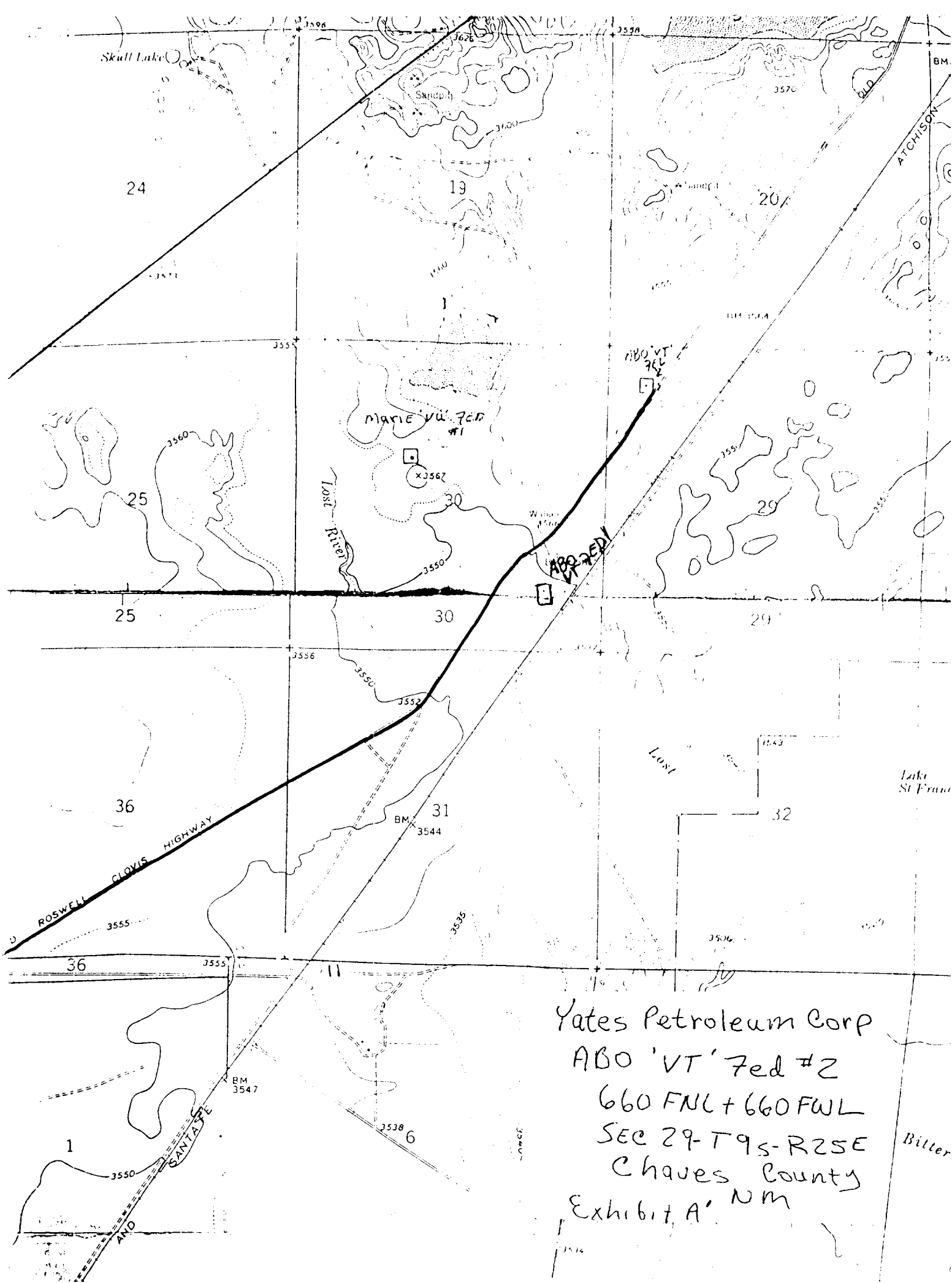
1. The geologic surface formation is sandy alluvium.
2. The estimated tops of geologic markers are as follows:

<u>San Andres</u>	<u>471'</u>
<u>Glorieta</u>	<u>1349'</u>
<u>Fullerton</u>	<u>2776'</u>
<u>Abo</u>	<u>3511'</u>
<u>TD</u>	<u>4250'</u>
3. The estimated depths at which anticipated water, oil or gas formations are expected to be encountered:

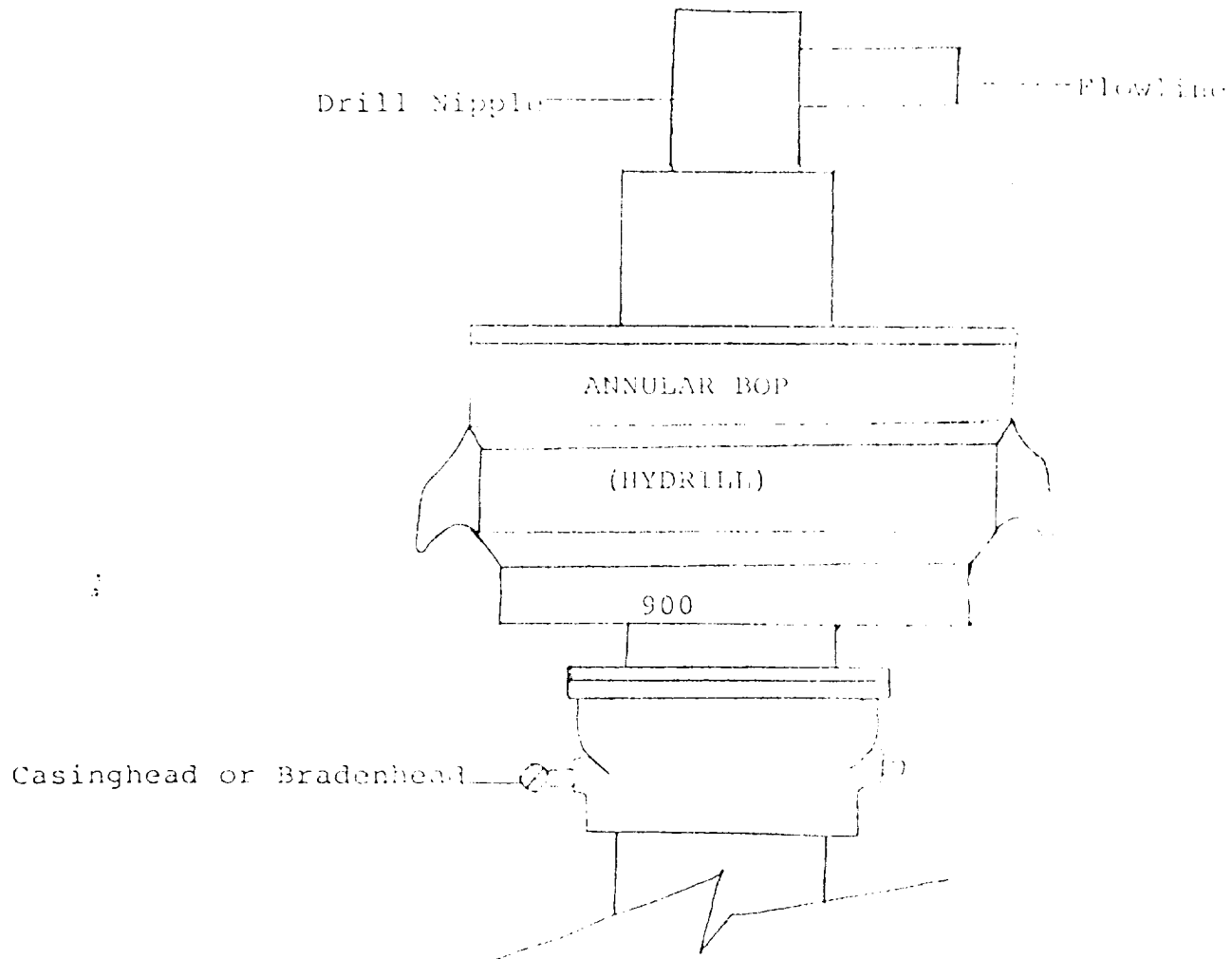
Water: 250'-300'

Oil or Gas: Abo 3540'
4. Proposed Casing Program: See Form 9-331C.
5. Pressure Control Equipment: See Form 9-331C and Exhibit B.
6. Mud Program: See Form 9-331C.
7. Auxiliary Equipment: Kelly Cock; pit level indicators and flow sensor equipment;
sub with full-opening valve on floor, drill pipe connection.
8. Testing, Logging and Coring Program:

Samples: Surface casing to TD.
DST's: As warranted
Coring: None anticipated
Logging: CNL-FDC TD to csg w/GR-CNL to surface, DLL from TD to casing.
9. No abnormal pressures or temperatures are anticipated.
10. Anticipated starting date: As soon as possible after approval.



Yates Petroleum Corp
ABO 'VT' 7ed #2
660 FNL + 660 FWL
SEC 29-T9S-R2SE
Chaves County
Exhibit A' NM



THE FOLLOWING CONSTITUTE MINIMUM BLOWOUT PREVENTER REQUIREMENTS

1. All preventers to be hydraulically operated with secondary manual controls installed prior to drilling out from under casing.
2. All connections from operating manifolds to preventers to be all steel. Hole or tube a minimum of one inch in diameter.
3. The available closing pressure shall be at least 15% in excess of that required with sufficient volume to operate the BOP's.
4. All connections to and from preventer to have a pressure rating equivalent to that of the BOP's.
5. Hole must be kept filled on trips below intermediate casing.

LAURENCE

