

UNITED STATES
DEPARTMENT OF THE INTERIOR
GEOLOGICAL SURVEY

Artesia, NM (Other instructions on reverse side)

30-005-61839
C/BH

APPLICATION FOR PERMIT TO DRILL, DEEPEN, OR PLUG BACK

1a. TYPE OF WORK

DRILL ☒DEEPEN ☐PLUG BACK ☐

b. TYPE OF WELL

OIL
WELL ☐GAS
WELL ☒

OTHER

SINGLE
ZONE ☒MULTIPLE
ZONE ☐

2. NAME OF OPERATOR

TRANSWESTERN GAS SUPPLY COMPANY ✓

3. ADDRESS OF OPERATOR

P.O. Box 2521, Houston, TX 77001

4. LOCATION OF WELL (Report location clearly and in accordance with any State requirements.)*

At surface

1980' FNL 1980' FWL Sec. 8-6S-23E

At proposed prod. zone

Same

14. DISTANCE IN MILES AND DIRECTION FROM NEAREST TOWN OR POST OFFICE*

27 Miles north-northwest of Roswell, New Mexico

15. DISTANCE FROM PROPOSED*

LOCATION TO NEAREST
PROPERTY OR LEASE LINE, FT.
(Also to nearest drg. unit line, if any)

1980'

18. DISTANCE FROM PROPOSED LOCATION*

TO NEAREST WELL, DRILLING, COMPLETED,
OR APPLIED FOR, ON THIS LEASE, FT.

1867'

16. NO. OF ACRES IN LEASE

1149.21

19. PROPOSED DEPTH

3800' Abo

17. NO. OF ACRES ASSIGNED
TO THIS WELL

160

20. ROTARY OR CABLE TOOLS

Rotary

21. ELEVATIONS (Show whether DF, RT, GR, etc.)

4163.12 GL

22. APPROX. DATE WORK WILL START*

November 15, 1982

23. PROPOSED CASING AND CEMENTING PROGRAM

| SIZE OF HOLE | SIZE OF CASING | WEIGHT PER FOOT | SETTING DEPTH | QUANTITY OF CEMENT |
|--------------|----------------|-----------------|---------------|-------------------------------|
| 17-1/2" | 13-3/8" | 48.0# K-55 | 60' | Grout to Surface with Redimix |
| 11" | 7-5/8" | 26.4# K-55 | 1500' | 450 sx Circulated |
| 6-3/4" | 4-1/2" | 10.5# J-55 | 3800' | 300 sx Cemented back to 2200' |

Propose to drill to approximately 3800' to test Abo and intermediate formations. Will be drilled with rotary tools using mud as the circulating medium. Complete in favorable zones by perforating and treating the formation.

Double-ram 3000# WP BOP will be installed on the 7-5/8" casing and tested daily during drilling operations.

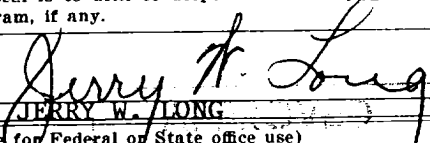
See "Supplemental Drilling Data".

Gas is dedicated to TRANSWESTERN PIPELINE COMPANY

IN ABOVE SPACE DESCRIBE PROPOSED PROGRAM: If proposal is to deepen or plug back, give data on present productive zone and proposed new productive zone. If proposal is to drill or deepen directionally, give pertinent data on subsurface locations and measured and true vertical depths. Give blowout preventer program, if any.

24.

SIGNED


JERRY W. LONG

TITLE

Agent

DATE November 1, 1982

(This space for Federal or State office use)

PERMIT NO.

(Orig. Sgd.) GEORGE H. STEWART

APPROVAL DATE

APPROVED BY

CONDITIONS OF APPROVAL, IF ANY:

TITLE

DATE

NOV 15 1982

OIL CONSERVATION DIVISION

STATE OF NEW MEXICO
ENERGY AND MINERALS DEPARTMENTP. O. BOX 2088
SANTA FE, NEW MEXICO 87501Form C-102
Revised 10-1-78

All distances must be from the outer boundaries of the Section.

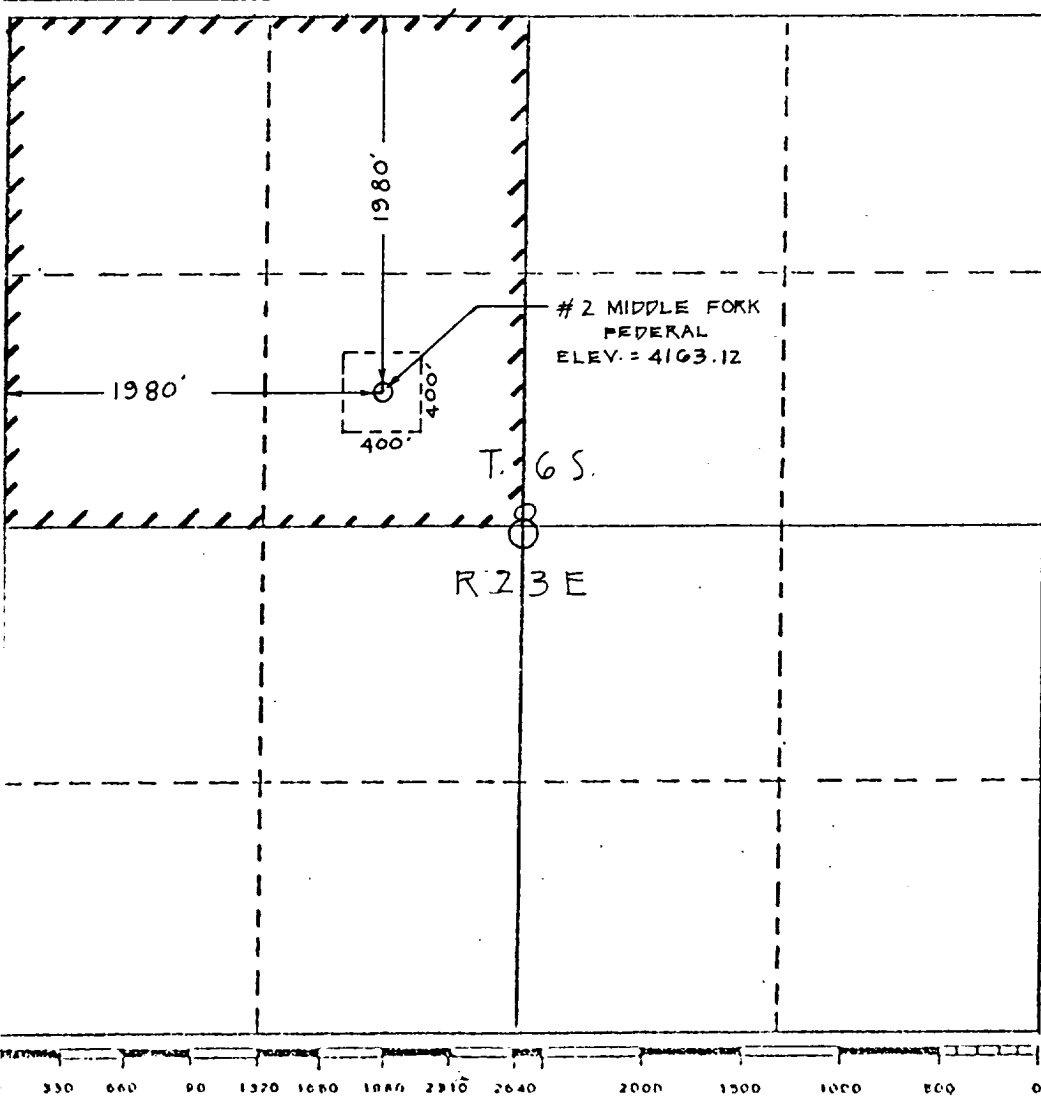
| | | | | | |
|--|-----------------------------------|---------------------------------|-------------------------------------|--|----------------------|
| Operator Transwestern Gas Supply | | | Lease Middle Fork Federal | | Well No. 2 |
| Unit Letter F | Section 8 | Township 6 South | Range 23 East | County Chaves | |
| Actual Postage Location of Well: | | | | | |
| 1980 feet from the north | | 1980 feet from the west | | line | |
| Ground Level Elev. 4163.12 | Producing Formation Abo | Pool Undesignated Abo | | Dedicated Acreage: 160 Acres | |

1. Outline the acreage dedicated to the subject well by colored pencil or hachure marks on the plat below.
2. If more than one lease is dedicated to the well, outline each and identify the ownership thereof (both as to working interest and royalty). SINGLE LEASE
3. If more than one lease of different ownership is dedicated to the well, have the interests of all owners been consolidated by communitization, unitization, force-pooling, etc?

☐ Yes ☐ No If answer is "yes," type of consolidation _____

If answer is "no," list the owners and tract descriptions which have actually been consolidated. (Use reverse side of this form if necessary.) _____

No allowable will be assigned to the well until all interests have been consolidated (by communitization, unitization, forced-pooling, or otherwise) or until a non-standard unit, eliminating such interests, has been approved by the Division.



CERTIFICATION

I hereby certify that the information contained herein is true and complete to the best of my knowledge and belief.

Name
JERRY W. LONG

Position
Agent

Company
TRANSWESTERN GAS SUPPLY CO.

Date
November 1, 1982

I hereby certify that the well location shown on this plat was plotted from field notes of actual surveys made by me or under my supervision, and that the same is true and correct to the best of my knowledge and belief.

October 20, 1982
Date Submitted
Richard B. Wright
Registered Professional Engineer
and/or Land Surveyor
Certificate No. 7929

SUPPLEMENTAL DRILLING DATA

TRANSWESTERN GAS SUPPLY COMPANY
No.2 Middle Fork Federal
1980'FNL 1980'FWL Sec.8-6S-23E
Chaves County, N.M.

NM 32322-A

The following items supplement Form 9-331C in accordance with instructions contained in NTL-6.

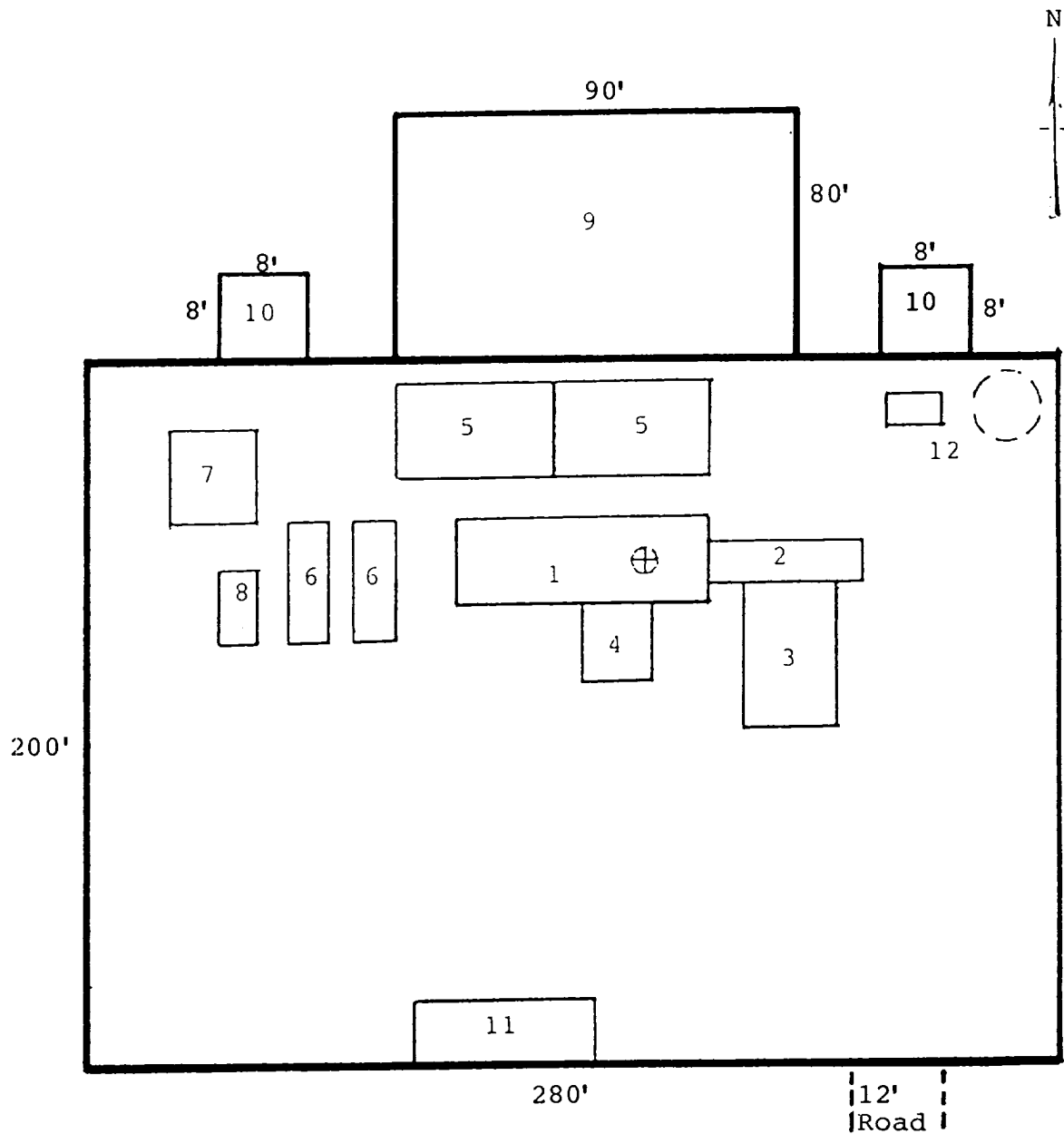
1. SURFACE FORMATION: Permian Seven Rivers
2. ESTIMATED TOPS OF GEOLOGIC MARKERS:

| | | | | | |
|--------------|---|---------|------|---|-------|
| Seven Rivers | - | Surface | Tubb | - | 2330' |
| San Andres | - | 140' | Abo | - | 2960' |
| Glorieta | - | 960' | | | |
3. ESTIMATED DEPTHS TO WATER, OIL OR GAS FORMATION:

| | | |
|-------|---|-----------------|
| Water | - | Surface to 600' |
| Gas | - | 2960' to 3800' |
4. PROPOSED CASING PROGRAM: See Form 9-331C
5. PRESSURE CONTROL EQUIPMENT: Blowout preventer stack will consist of a double-ram blowout preventer rated to 3000# WP. A sketch of the BOP is attached.
6. CIRCULATING MEDIUM: Hole for 13-3/8" conductor pipe will be drilled with a rat hole auger. Mud will be used as the circulating medium for the remainder of the drilling. Appropriate additives will be used in the mud system.
7. AUXILIARY EQUIPMENT: Full-opening kelly cock, to fit the drill string in use, will be kept on the rig floor at all times.
8. TESTING, LOGGING AND CORING PROGRAM:

| | |
|----------|---|
| Samples: | Surface casing shoe to TD |
| DST: | None anticipated |
| Logging: | Gamma Ray-Neutron log and other logs as recommended by well-site geologist. |
| Coring: | None anticipated |

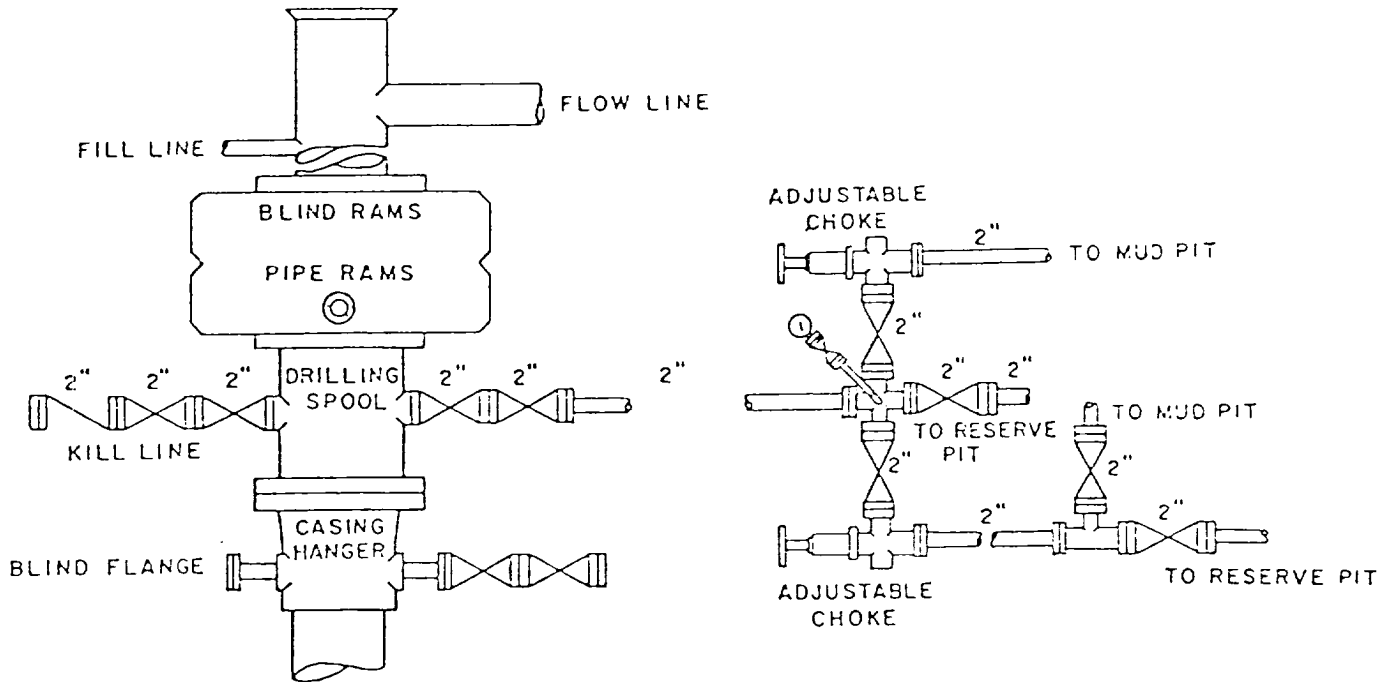
TRANSWESTERN GAS SUPPLY COMPANY
 No.2 Middle Fork Federal
 1980'FNL 1980'FWL Sec.8-6S-23E
 Chaves County, N.M.



RIG LAYOUT

- | | |
|-----------------|---------------------------|
| 1. Substructure | 7. Water Tank |
| 2. Catwalk | 8. Light Plant |
| 3. Pipe Rack | 9. Reserve Pit |
| 4. Doghouse | 10. Trash Pit |
| 5. Mud Pits | 11. Trailer House |
| 6. Mud Pumps | 12. Production Facilities |

TRANSWESTERN GAS SUPPLY COMPANY
No.2 Middle Fork Federal
1980'FNL 1980'FWL Sec.8-6S-23E
Chaves County, N.M.



BOP DIAGRAM

3000# WP Double-Ram
Operated Daily

TRANSWESTERN GAS SUPPLY COM. LY
No.2 Middle Fork Federal
1980'FNL 1980'FWL Sec.8-6S-23E
Chaves County, N.M.

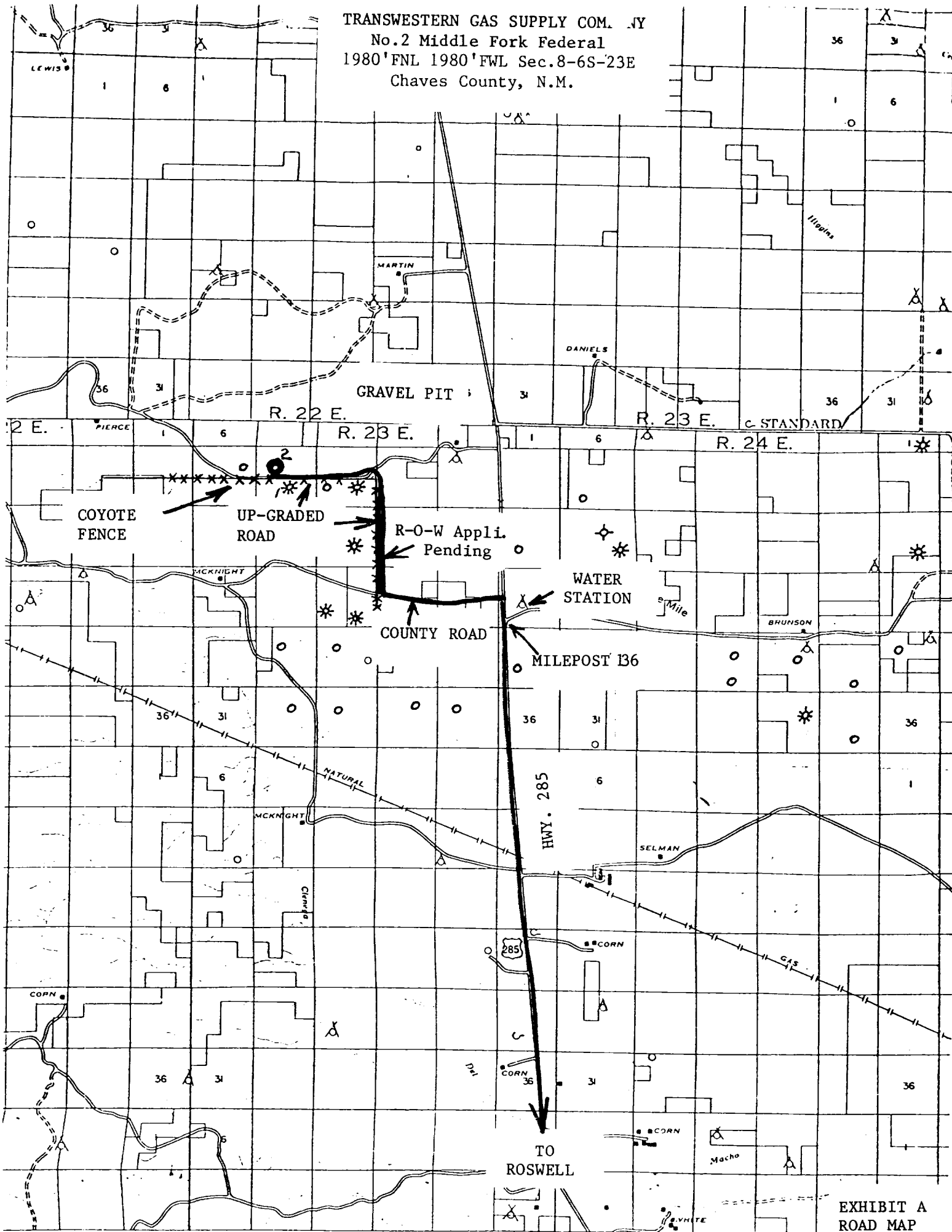


EXHIBIT A
ROAD MAP