

UNITED STATES DEPARTMENT OF THE INTERIOR  
GEOLOGICAL SURVEY  
NM OIL & GAS COMMISSION  
Artesia, NM 88210

C/37

30-005-61879

## APPLICATION FOR PERMIT TO DRILL, DEEPEN, OR PLUG BACK

1a. TYPE OF WORK  
DRILL ☒ DEEPEN ☐ PLUG BACK ☐

b. TYPE OF WELL  
OIL WELL ☐ GAS WELL ☒ OTHER ☐

2. NAME OF OPERATOR  
Yates Petroleum Corporation

3. ADDRESS OF OPERATOR  
207 S. 4th, Artesia, New Mexico 88210

4. LOCATION OF WELL (Report location clearly and in accordance with any applicable regulations.)  
At surface  
660' FSL and 1980' FEL  
At proposed prod. zone  
same

14. DISTANCE IN MILES AND DIRECTION FROM NEAREST TOWN OR POST OFFICE\*  
Approximately 37 miles NE of Roswell, New Mexico.

15. DISTANCE FROM PROPOSED\*  
LOCATION TO NEAREST  
PROPERTY OR LEASE LINE, FT.  
(Also to nearest drg. unit line, if any)  
660'

16. NO. OF ACRES IN LEASE  
2120

17. NO. OF ACRES ASSIGNED  
TO THIS WELL  
160

18. DISTANCE FROM PROPOSED LOCATION\*  
TO NEAREST WELL, DRILLING, COMPLETED,  
OR APPLIED FOR, ON THIS LEASE, FT.

19. PROPOSED DEPTH  
4150'

20. ROTARY OR CABLE TOOLS  
Rotary

21. ELEVATIONS (Show whether DF, RT, GR, etc.)  
3997.6' GL

22. APPROX. DATE WORK WILL START\*  
ASAP

5. LEASE DESIGNATION AND SERIAL NO.  
NM-22614

6. IF INDIAN, ALLOTTEE OR TRIBE NAME

7. UNIT AGREEMENT NAME

8. FARM OR LEASE NAME  
Mike Harvey "TR" Fed

9. WELL NO.  
5

10. FIELD AND POOL, OR WILDCAT  
U.S. Pecos Slope Abo

11. SEC., T., R., M., OR BLK.  
AND SURVEY OR AREA  
Sec. 4-T5S-R24E

12. COUNTY OR PARISH  
Chaves

13. STATE  
NM

## PROPOSED CASING AND CEMENTING PROGRAM

SIZE OF HOLE	SIZE OF CASING	WEIGHT PER FOOT	SETTING DEPTH	QUANTITY OF CEMENT
14 3/4"	10 3/4"	40.5#	900'	600 sx circulated
7 7/8"	4 1/2"	9.5#	TD	350 sx

We propose to drill and test the Abo and intermediate formations. Approximately 900' of surface casing will be set and cement circulated to shut off gravel and caving. If needed (lost circulation) 8 5/8" intermediate casing will be run to 1500' and cemented with enough cement calculated to tie back into the surface casing. If commercial, production casing will be run and cemented with adequate cover, perforated and stimulated as needed for production.

MUD PROGRAM: FW gel & LCM to 900', Brine to 3200', Brine & KCL water to TD.

BOP PROGRAM: BOP's will be installed at the offset and tested daily.

GAS NOT DEDICATED.

IN ABOVE SPACE DESCRIBE PROPOSED PROGRAM: If proposal is to deepen or plug back, give data on present productive zone and proposed new productive zone. If proposal is to drill or deepen directionally, give pertinent data on subsurface locations and measured and true vertical depths. Give blowout preventer program, if any.

24. SIGNED \_\_\_\_\_ TITLE Regulatory Coordinator DATE 11/15/82

(This space for Federal or State office use)

PERMIT NO. \_\_\_\_\_ APPROVAL DATE \_\_\_\_\_

APPROVED BY \_\_\_\_\_ TITLE \_\_\_\_\_

CONDITIONS OF APPROVAL, IF ANY:

JAMES A. GILLHAM  
DISTRICT SUPERVISOR

DEC 9 1982

RECEIVED  
NOV 16 1982

OIL & GAS  
U.S. GEOLOGICAL SURVEY  
ROSWELL, NEW MEXICO

NEW MEXICO OIL CONSERVATION COMMISSION  
WELL LOCATION AND ACREAGE DEDICATION PLAT

Form G-100  
Supersedes G-128  
Effective 1-1-81

All distances must be from the outer boundaries of the Section.

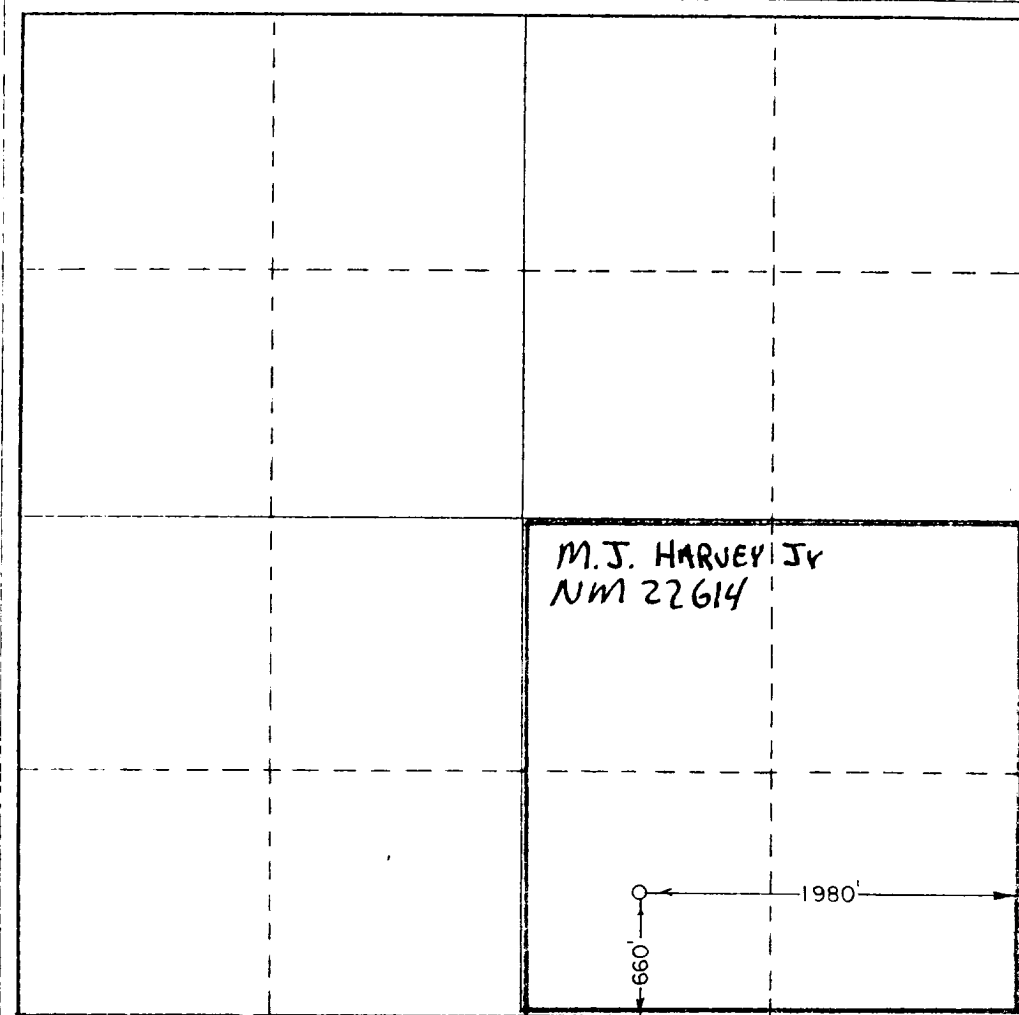
Owner <b>YATES PETROLEUM CORPORATION</b>			Lease <b>Mike Harvey "TR" Federal</b>		Well No. <b>5</b>
Quarter <b>0</b>	Section <b>4</b>	Township <b>5 South</b>	Range <b>24 East</b>	County <b>Chaves</b>	
Actual Surface Location of Well: <b>660</b> feet from the <b>South</b> line and <b>1980</b> feet from the <b>East</b> line					
Actual Depth Elev. <b>3997.6'</b>	Producing Formation <b>ABO</b>		Pool Name <b>Pecos Slope ABO</b>		Dedicated Acreage: <b>160</b> Acres

1. Outline the acreage dedicated to the subject well by colored pencil or hachure marks on the plat below.
2. If more than one lease is dedicated to the well, outline each and identify the ownership thereof (both as to working interest and royalty).
3. If more than one lease of different ownership is dedicated to the well, have the interests of all owners been consolidated by communitization, unitization, force-pooling, etc?

☐ Yes ☒ No If answer is "yes," type of consolidation \_\_\_\_\_

If answer is "no," list the owners and tract descriptions which have actually been consolidated. (Use reverse side of this form if necessary.) \_\_\_\_\_

No allowable will be assigned to the well until all interests have been consolidated (by communitization, unitization, forced-pooling, or otherwise) or until a non-standard unit, eliminating such interests, has been approved by the Commission.



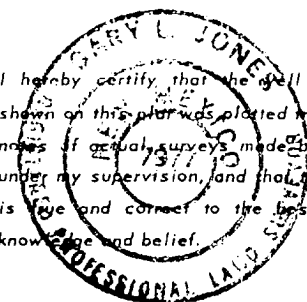
CERTIFICATION

I hereby certify that the information contained herein is true and complete to the best of my knowledge and belief.

*Cy Cowan*

Name  
**Cy Cowan**  
Position  
**Regulatory Coordinator**  
Company  
**Yates Petroleum Corp.**  
Date  
**11/15/82**

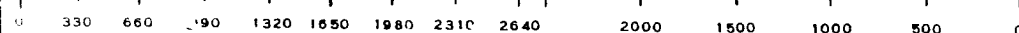
I hereby certify that the well location shown on this plat was plotted from field notes of actual surveys made by me or under my supervision, and that the same is true and correct to the best of my knowledge and belief.

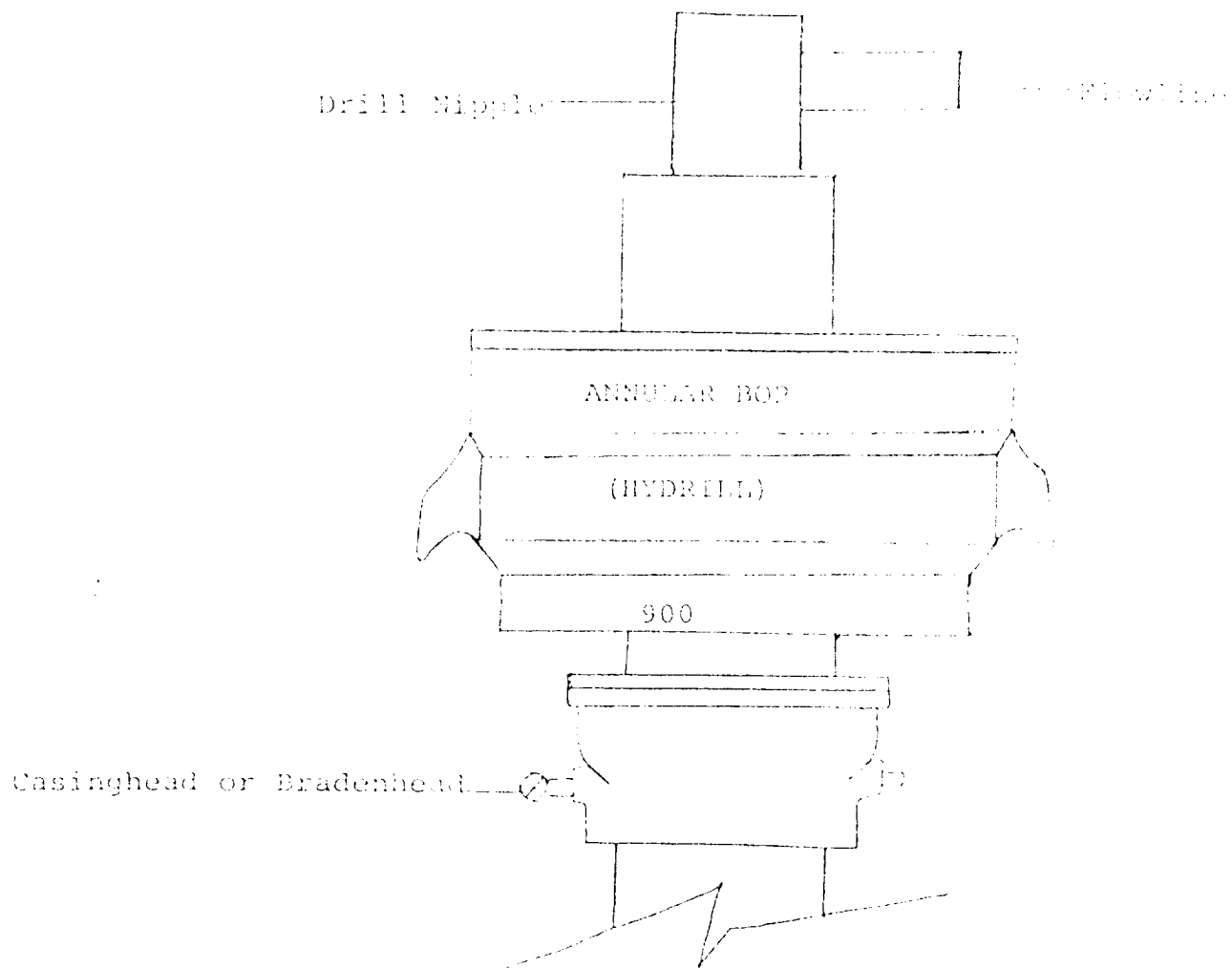


Date Surveyed  
**October 22, 1982**  
Registered Professional Engineer and/or Land Surveyor

*Sam Q. Smith*  
Certificate No.

7977





THE FOLLOWING CONSTITUTE MINIMUM BLOWOUT PREVENTER REQUIREMENTS

1. All preventers to be hydraulically operated with secondary manual controls installed prior to drilling out from under casing.
2. All connections from operating manifolds to preventers to be all steel. Hole or tube a minimum of one inch in diameter.
3. The available closing pressure shall be at least 15% in excess of that required with sufficient volume to operate the BOP's.
4. All connections to and from preventer to have a pressure rating equivalent to that of the BOP's.
5. Hole must be kept filled on trips below intermediate casing.

YATES PETROLEUM CORPORATION

Mike Harvey "TR" Federal  
660' FSL and 1980' FEL  
Sec. 4-T5S-R25E

In conjunction with Form 9-331C, Application for Permit to Drill subject well, Yates Petroleum Corporation submits the following ten items of pertinent information in accordance with USGS requirements.

1. The geologic surface formation is sandy alluvium.

2. The estimated tops of geologic markers are as follows:

<u>San Andres</u>	<u>518'</u>
<u>Glorieta</u>	<u>1453'</u>
<u>Fullerton</u>	<u>2829'</u>
<u>Abo</u>	<u>3458'</u>
<u>TD</u>	<u>4150'</u>

3. The estimated depths at which anticipated water, oil or gas formations are expected to be encountered:

Water: Approximately 250' - 300'

Oil or Gas: Abo 3475'

4. Proposed Casing Program: See Form 9-331C.

5. Pressure Control Equipment: See Form 9-331C and Exhibit B.

6. Mud Program: See Form 9-331C.

7. Auxiliary Equipment: Kelly Cock; pit level indicators and flow sensor equipment;  
sub with full-opening valve on floor, drill pipe connection.

8. Testing, Logging and Coring Program:

Samples: Surface casing to TD.

DST's: As warranted.

Coring: None

Logging: CNL-FDC TD to csg w/GR-CNL to surface & DLL from TD to csg

9. No abnormal pressures or temperatures are anticipated.

10. Anticipated starting date: As soon as possible after approval.

L A T I N I T Y

