

UNITED STATES
DEPARTMENT OF THE INTERIOR
GEOLOGICAL SURVEY
Artesia, NM 88210

30-005-01787

APPLICATION FOR PERMIT TO DRILL, DEEPEN, OR PLUG BACK

1a. TYPE OF WORK

DRILL ☒DEEPEN ☐PLUG BACK ☐

b. TYPE OF WELL

OIL
WELL ☐GAS
WELL ☒

OTHER

SINGLE
ZONE ☐MULTIPLE
ZONE ☐

2. NAME OF OPERATOR

Yates Petroleum Corporation

3. ADDRESS OF OPERATOR

207 S. 4th, Artesia, New Mexico 88210

4. LOCATION OF WELL (Report location clearly and in accordance with any State requirements.)*

At surface

1980' FSL and 1980' FWL

At proposed well zone

same

SEE ATTACHED CHANGE

14. DISTANCE IN MILES AND DIRECTION FROM NEAREST TOWN OR POST OFFICE*

Approximately 36 miles NNE of Roswell, NM.

15. DISTANCE FROM PROPOSED*
LOCATION TO NEAREST
PROPERTY OR LEASE LINE, FT.

(Also to nearest drlg. unit line, if any)

16. NO. OF ACRES IN LEASE

2120

18. DISTANCE FROM PROPOSED LOCATION*
TO NEAREST WELL, DRILLING, COMPLETED,
OR APPLIED FOR, ON THIS LEASE, FT.

19. PROPOSED DEPTH

4150'

17. NO. OF ACRES ASSIGNED
TO THIS WELL

160

20. ROTARY OR CABLE TOOLS

Rotary

21. ELEVATIONS (Show whether DF, RT, GR, etc.)

4024.8' GL

22. APPROX. DATE WORK WILL START*

ASAP

23.

PROPOSED CASING AND CEMENTING PROGRAM

SIZE OF HOLE	SIZE OF CASING	WEIGHT PER FOOT	SETTING DEPTH	QUANTITY OF CEMENT
14 3/4"	10 3/4"	40.5#	900'	600 sx circulated
7 7/8"	4 1/2"	9.5#	TD	350 sx

We propose to drill and test the Abo and intermediate formations. Approximately 900' of surface casing will be set and cement circulated to shut off gravel and caving. If needed (lost circulation) 8 5/8" intermediate casing will be run to 1500' and cemented with enough cement calculated to tie back into the surface casing. If commercial, production casing will be run and cemented with adequate cover, perforated, and stimulated as needed for production.

MUD PROGRAM: FW gel & LCM to 900', Brine to 3200', Brine/water to TD.

BOP PROGRAM: BOP's will be installed at the offset and tested daily.

GAS NOT DEDICATED.

IN ABOVE SPACE DESCRIBE PROPOSED PROGRAM: If proposal is to deepen or plug back, give data on present productive zone and proposed new productive zone. If proposal is to drill or deepen directionally, give pertinent data on subsurface locations and measured and true vertical depths. Give blowout preventer program, if any.

24.

SIGNED

*Cy Cuman*TITLE Regulatory Coordinator DATE 11/15/82

(This space for Federal Agency Use)

APPROVED
(Orig. Sgd.) GEORGE H. STEWART

PERMIT NO.

APPROVAL DATE

APPROVED BY

TITLE

CONDITIONS OF APPROVAL, IF ANY:

DEC 17 1982

JAMES A. GILLHAM
DISTRICT SUPERVISORRECEIVED
NOV 16 1982OIL & GAS
U.S. GEOLOGICAL SURVEY
ROSSELL, NEW MEXICO

UNITED STATES Artesia, NM 88210
DEPARTMENT OF THE INTERIOR
GEOLOGICAL SURVEY

SUNDRY NOTICES AND REPORTS ON WELLS

(Do not use this form for proposals to drill or to deepen or plug back to a different reservoir. Use Form 9-331-C for such proposals.)

1. oil ☐ gas ☒ other ☐

2. NAME OF OPERATOR

Yates Petroleum Corporation

3. ADDRESS OF OPERATOR

207 S. 4th, Artesia, New Mexico

4. LOCATION OF WELL (REPORT LOCATION CLEARLY. See space 17 below.)

AT SURFACE: 1780' FSL and 1980' FWL

AT TOP PROD. INTERVAL:

AT TOTAL DEPTH: same

16. CHECK APPROPRIATE BOX TO INDICATE NATURE OF NOTICE, REPORT, OR OTHER DATA

REQUEST FOR APPROVAL TO:

SUBSEQUENT REPORT OF:

TEST WATER SHUT-OFF ☐

FRACTURE TREAT ☐

SHOOT OR ACIDIZE ☐

REPAIR WELL ☐

PULL OR ALTER CASING ☐

MULTIPLE COMPLETE ☐

CHANGE ZONES ☐

ABANDON* ☐

(other) move location

5. LEASE

NM-22614

6. IF INDIAN, ALLOTTEE OR TRIBE NAME

7. UNIT AGREEMENT NAME

8. FARM OR LEASE NAME

Mike Harvey "TR" Federal

9. WELL NO.

6

10. FIELD OR WILDCAT NAME

Pecos Slope Abo

11. SEC., T., R., M., OR BLK. AND SURVEY OR AREA

Sec. 4-T5S-R24E

12. COUNTY OR PARISH

Chaves

13. STATE

NM

14. API NO.

15. ELEVATIONS (SHOW DF, KDB, AND WD)

4024.8' GL

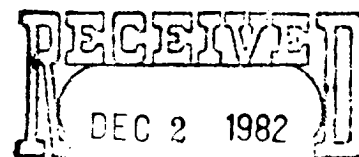
(NOTE: Report results of multiple completion or zone change on Form 9-330.)

17. DESCRIBE PROPOSED OR COMPLETED OPERATIONS (Clearly state all pertinent details, and give pertinent dates, including estimated date of starting any proposed work. If well is directionally drilled, give subsurface locations and measured and true vertical depths for all markers and zones pertinent to this work.)*

Moved location from: 1980' FSL and 1980' FWL

to: 1780' FSL and 1980' FWL

Due to archaeology.



OIL & GAS
U.S. GEOLOGICAL SURVEY
ROSWELL, NEW MEXICO

Subsurface Safety Valve: Manu. and Type

Set @

18. I hereby certify that the foregoing is true and correct

SIGNED

Cy Cowan

TITLE Regulatory Coordinator

DATE 12/1/82

(Orig. Sgd.) GEORGE H. STEWART

APPROVED BY

CONDITIONS OF APPROVAL IS ANY

DEC 17 1982

JAMES A. GILLHAM
DISTRICT SUPERVISOR

*See Instructions on Reverse Side

NEW MEXICO OIL CONSERVATION COMMISSION
WELL LOCATION AND ACREAGE DEDICATION PLAT

Form C-102
Supersedes C-128
Effective 1-1-65

All distances must be from the outer boundaries of the Section.

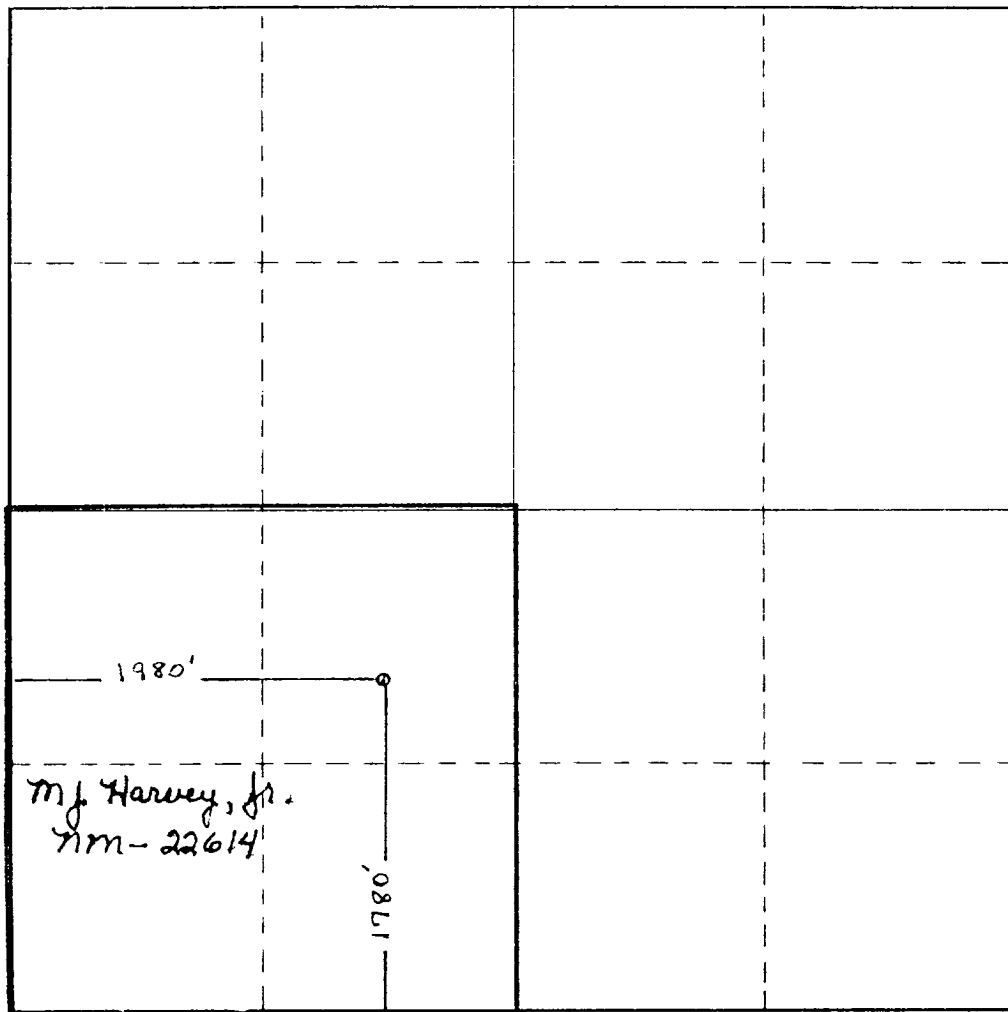
Operator YATES PETROLEUM CORPORATION		Lease Mike Harvey "TR" Federal		Well No. 6
Unit Letter A	Section 4	Township 5 South	Range 24 East	County Chaves
Actual Footage Location of Well: 1780 feet from the South line and 1980 feet from the West line				
Ground Level Elev. 4024.8' GL	Producing Formation Abo	Pool Pecos Slope Abo	Dedicated Acreage: 160 Acres	

- Outline the acreage dedicated to the subject well by colored pencil or hatchure marks on the plat below.
- If more than one lease is dedicated to the well, outline each and identify the ownership thereof (both as to working interest and royalty).
- If more than one lease of different ownership is dedicated to the well, have the interests of all owners been consolidated by communitization, unitization, force-pooling, etc?

☐ Yes ☐ No If answer is "yes," type of consolidation _____

If answer is "no," list the owners and tract descriptions which have actually been consolidated. (Use reverse side of this form if necessary.) _____

No allowable will be assigned to the well until all interests have been consolidated (by communitization, unitization, forced-pooling, or otherwise) or until a non-standard unit, eliminating such interests, has been approved by the Commission.



CERTIFICATION

I hereby certify that the information contained herein is true and complete to the best of my knowledge and belief.

Cy Cowan

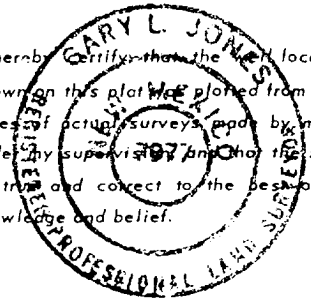
Name
Cy Cowan

Position
Regulatory Coordinator

Company
Yates Petroleum Corp.

Date
12/1/82

I hereby certify that the well location shown on this plat was plotted from field notes of actual surveys made by me or under my supervision and that the same is true and correct to the best of my knowledge and belief.



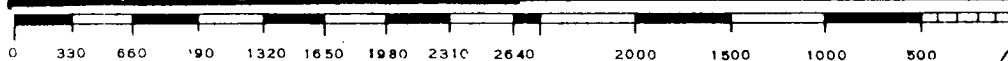
Date Surveyed
11/29/82

Registered Professional Engineer
and/or Land Surveyor

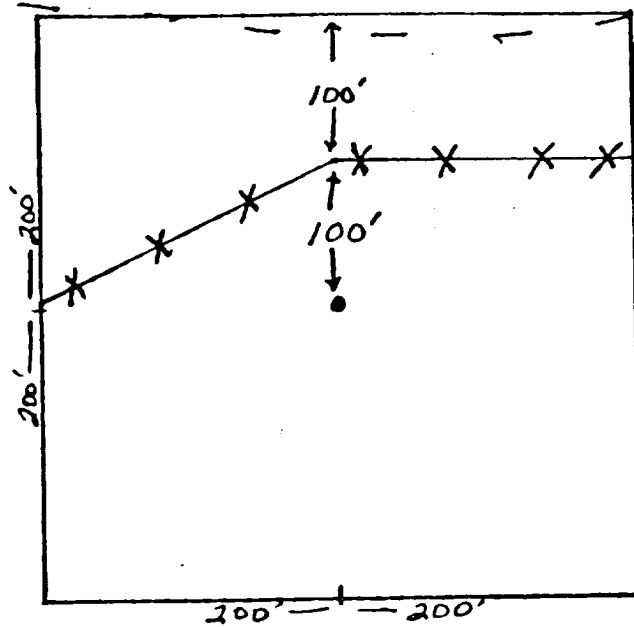
Gary L. Jones

Certificate No.

7977



GRCNM 40



RELOCATION

MIKE HARVEY "TR" FED. WELL #6 (RELOCATION #1)

GRC L8303

YATES PET. CORP.

X X X = FENCE

YATES PETROLEUM CORPORATION
Mike Harvey "TR" Federal
1980' FSL and 1980' FWL
Sec. 4-T5S-R25E
Developmental Well

In conjunction with Form 9-331C, Application for Permit to Drill subject well, Yates Petroleum Corporation submits the following ten items of pertinent information in accordance with USGS requirements.

1. The geologic surface formation is Sandy Alluvium.
2. The estimated tops of geologic markers are as follows:

<u>San Andres</u>	<u>526'</u>
<u>Glorieta</u>	<u>1461'</u>
<u>Fullerton</u>	<u>2837'</u>
<u>Abo</u>	<u>3460'</u>
<u>TD</u>	<u>4150'</u>

3. The estimated depths at which anticipated water, oil or gas formations are expected to be encountered:

Water: Approximately 250' - 300'

Oil or Gas: Abo 3490'

4. Proposed Casing Program: See Form 9-331C.
5. Pressure Control Equipment: See Form 9-331C and Exhibit B.
6. Mud Program: See Form 9-331C.
7. Auxiliary Equipment: Kelly Cock; pit level indicators and flow sensor equipment; sub with full-opening valve on floor, drill pipe connection.
8. Testing, Logging and Coring Program:

Samples: Surface casing to TD.

DST's: As warranted.

Coring: None anticipated.

Logging: CNL-FDC TD to csg w/GR-CNL to surface & DLL from TD to casing.

9. No abnormal pressures or temperatures are anticipated.
10. Anticipated starting date: As soon as possible after approval.

KE HARVEY
TR 7ED #6

MIKE
HARVEY #1

TESUQUE

CAMACK
#5

Horse Creek Spring

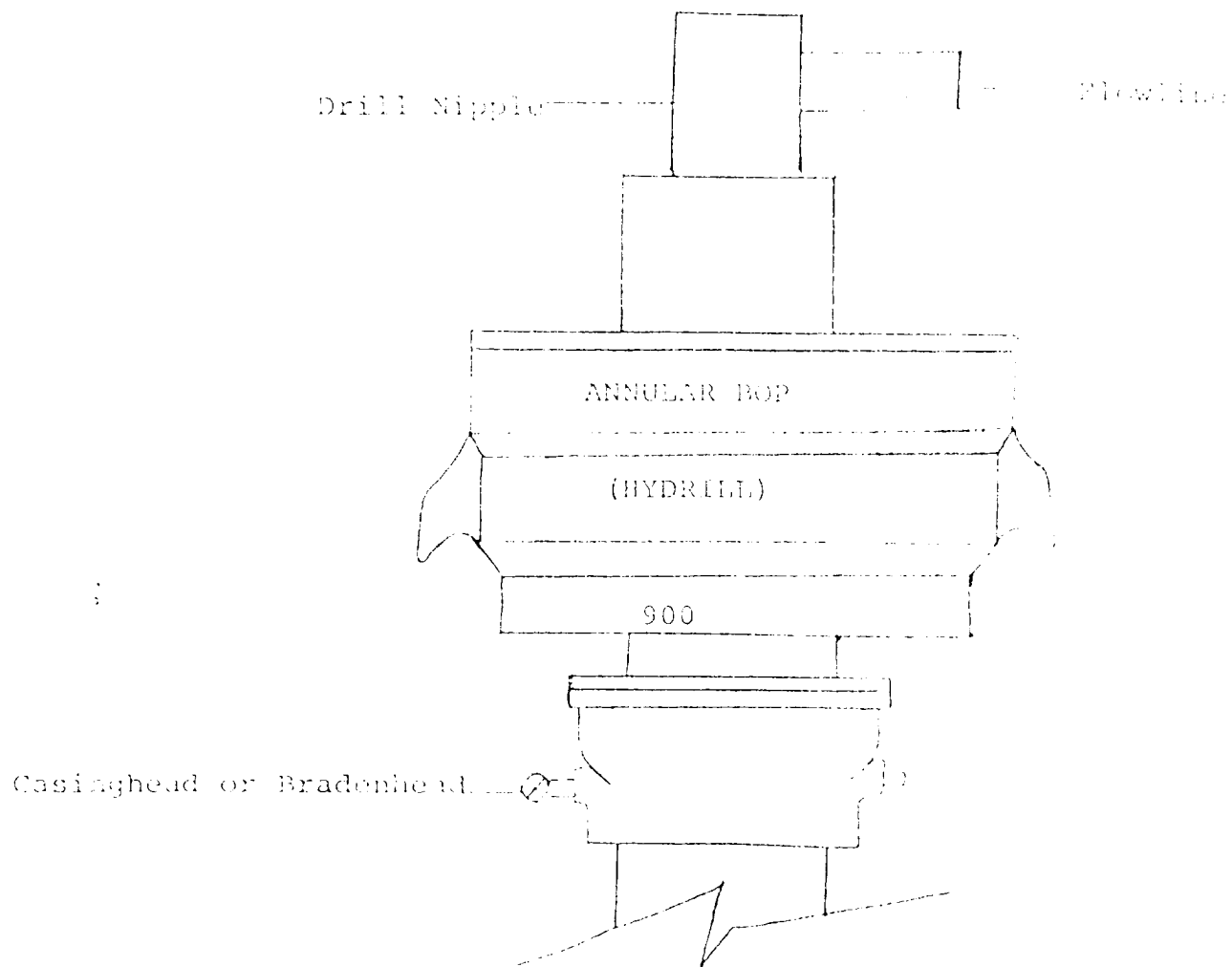
Lower
Horse Creek Spr

Huggins

KE # 14

YATES Petroleum Corp
MIKE HARVEY TR 7ED #6
1980' FSL + 1930' FWL
SEC 4-T5S-R24E
Chaves County
NM
Exhibit A

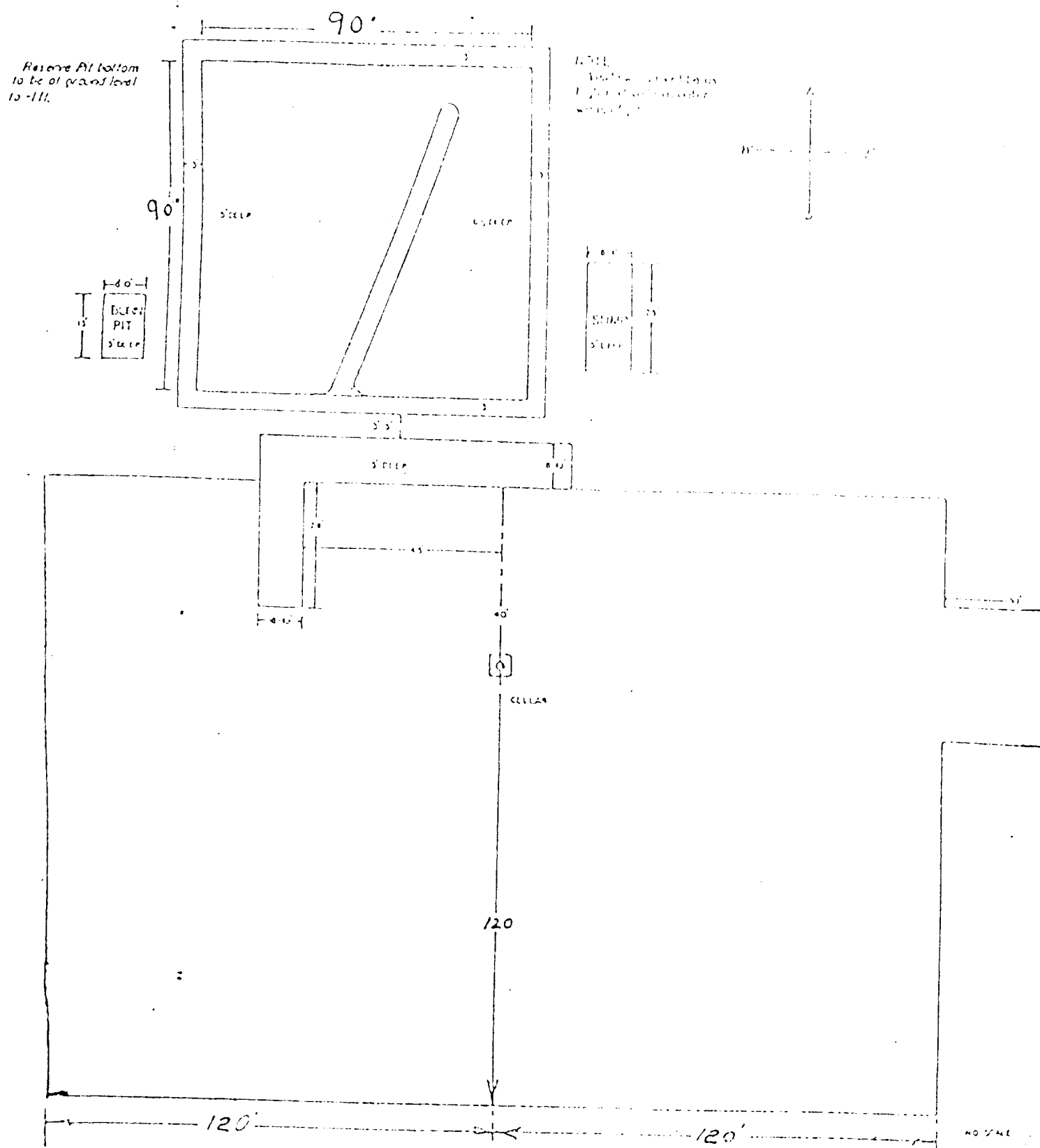
SAGEBRUSH



THE FOLLOWING CONSTITUTE MINIMUM BLOWOUT PREVENTER REQUIREMENTS

1. All preventers to be hydraulically operated with secondary manual controls installed prior to drilling out from under casing.
2. All connections from operating manifolds to preventers to be all steel. Hole or tube a minimum of one inch in diameter.
3. The available closing pressure shall be at least 15% in excess of that required with sufficient volume to operate the BOP's.
4. All connections to and from preventer to have a pressure rating equivalent to that of the BOP's.
5. Hole must be kept filled on trips below intermediate casing.

Литература





207 SOUTH FOURTH STREET
ARTESIA, NEW MEXICO 88210

TELEPHONE (505) 748-1331

S. P. YATES
PRESIDENT
MARTIN YATES, III
VICE PRESIDENT
JOHN A. YATES
VICE PRESIDENT
B. W. HARPER
SEC. TREAS.

November 11, 1982

Mr. George Stewart
Minerals Management Service
Federal Building
Roswell, New Mexico 88201

Re: Mike Harvey "TR" Federal #6

Dear Mr. Stewart,

Yates Petroleum Corporation has submitted an application to drill a well on surface owned by James Ewart, P. O. Box 1122 Dunlap Route, Roswell, New Mexico 88201. This well is located in Section 4, T5S-R24E, 1980' FSL and 1980' FWL.

In an on-site visit with Mr. Ewart, it was agreed that we would compensate him monetarily for the surface damages incurred. After drilling has been completed, the pit area will be leveled after it is dry and along with the apd will be left to reseed naturally.

Sincerely,

Cy Cowan
Regulatory Coordinator
YATES PETROLEUM CORPORATION

CC/dw