

NM OIL CONS. COMMISSION
Drawn by
Artesia, NM 88210
UNITED STATES
DEPARTMENT OF THE INTERIOR
GEOLOGICAL SURVEYSUBMIT IN TRIPLICATE*
(Other instructions on
reverse side)

APJ # 30-005-62028

Form approved.
Budget Bureau No. 42-R1425

APPLICATION FOR PERMIT TO DRILL, DEEPEN, OR PLUG BACK			RECEIVED JUN 22 3 48 PM '83 BUR. OF LAND MGMT ROSWELL DISTRICT	
1a. TYPE OF WORK DRILL <input checked="" type="checkbox"/> DEEPEN <input type="checkbox"/> PLUG BACK <input type="checkbox"/>			5. LEASE DESIGNATION AND SERIAL NO. NM-37028	
b. TYPE OF WELL OIL WELL <input type="checkbox"/> GAS WELL <input checked="" type="checkbox"/> OTHER <input type="checkbox"/>			6. IF INDIAN, ALLOTTEE OR TRIBE NAME	
2. NAME OF OPERATOR Yates Petroleum Corporation			7. UNIT AGREEMENT NAME	
3. ADDRESS OF OPERATOR 207 S. 4th, Artesia, New Mexico 88210			8. FARM OR LEASE NAME Tabosa "XP" Fed	
4. LOCATION OF WELL (Report location clearly and in accordance with any State requirements*) At surface 660' FNL and 660' FEL At proposed prod. zone same			9. WELL NO. 1	
14. DISTANCE IN MILES AND DIRECTION FROM NEAREST TOWN OR POST OFFICE Approximately 40 miles NW of Roswell, NM.			10. FIELD AND POOL, OR WILDCAT Wildcat - Abo	
15. DISTANCE FROM PROPOSED* LOCATION TO NEAREST PROPERTY OR LEASE LINE, FT. (Also to nearest drlg. unit line, if any) 660'			11. SEC., T., R., M., OR BLK. AND SURVEY OR AREA Sec. 1-T5S-R20E	
16. NO. OF ACRES IN LEASE 3518			12. COUNTY OR PARISH Chaves	
17. NO. OF ACRES ASSIGNED TO THIS WELL 160			13. STATE NM	
18. DISTANCE FROM PROPOSED* LOCATION TO NEAREST WELL, DRILLING, COMPLETED, OR APPLIED FOR, ON THIS LEASE, FT.			20. ROTARY OR CABLE TOOLS Rotary	
21. ELEVATIONS (Show whether DF, RT, GR, etc.) 4541.6' GL			22. APPROX. DATE WORK WILL START* ASAP	

23. PROPOSED CASING AND CEMENTING PROGRAM

SIZE OF HOLE	SIZE OF CASING	WEIGHT PER FOOT	SETTING DEPTH	QUANTITY OF CEMENT
17 1/2"	13 3/8"	J-55	550' 350'	350 sx circulated
12 1/4"	8 5/8"	J-55	1350'	500 sx
7 7/8"	4 1/2"	9.5#	TD	

We propose to ~~550~~ drill and test the Abo and intermediate formations. Approximately 350' of surface casing will be set and cement circulated to shut off gravel and caving. 8 5/8" intermediate casing will be run to 1350' and cemented with enough cement calculated to tie back into the surface casing. Temperature survey will be run to determine cement top. If commercial, production casing will be run and cemented with adequate cover, perforate and stimulate as needed for production.

MUD PROGRAM: FW gel & LCM to 1350', Brine to 1350' to TD.

BOP PROGRAM: BOP's will be installed at the offset and tested daily.

GAS NOT DEDICATED.

IN ABOVE SPACE DESCRIBE PROPOSED PROGRAM: If proposal is to deepen or plug back, give data on present productive zone and proposed new productive zone. If proposal is to drill or deepen directionally, give pertinent data on subsurface locations and measured and true vertical depths. Give blowout preventer program, if any.

24. SIGNED Cy Cuman TITLE Regulatory Agent DATE 6/22/83
(This space for Federal or State office use)

PERMIT NO. _____ APPROVAL DATE _____
APPROVED BY A. D. Lopez TITLE _____ DATE 7/13/83
CONDITIONS OF APPROVAL, IF ANY: _____

APPROVAL SUBJECT TO
GENERAL REQUIREMENTS AND
SPECIAL STIPULATIONS
ATTACHED

NEW MEXICO OIL CONSERVATION COMMISSION
WELL LOCATION AND ACREAGE DEDICATION PLAT

Form C-102
Supersedes C-128
Effective 1-1-65

All distances must be from the outer boundary of the Section.

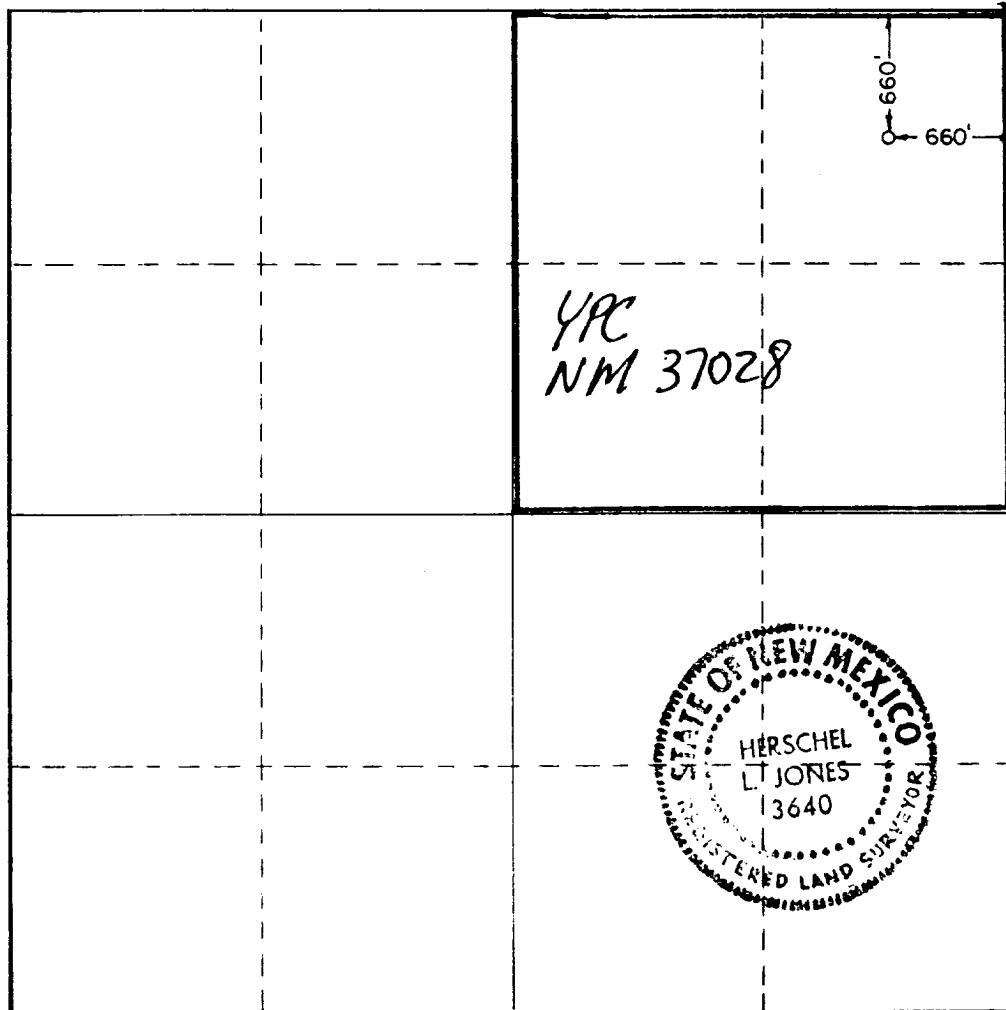
Operator YATES PETROLEUM CORPORATION			Lease JUN 22 1983 "X8" FEDERAL		Well No. 1
Unit Letter A	Section 1	Township 5 South	Range 20 East Chaves		
Actual Footage Location of Well: 660 feet from the North line and 660 feet from the East line					
Ground Level Elev. 4541.6	Producing Formation ABO	Pool Wildcat		Dedicated Acreage: 160 Acres	

1. Outline the acreage dedicated to the subject well by colored pencil or hachure marks on the plat below.
2. If more than one lease is dedicated to the well, outline each and identify the ownership thereof (both as to working interest and royalty).
3. If more than one lease of different ownership is dedicated to the well, have the interests of all owners been consolidated by communitization, unitization, force-pooling, etc?

☐ Yes ☒ No If answer is "yes," type of consolidation _____

If answer is "no," list the owners and tract descriptions which have actually been consolidated. (Use reverse side of this form if necessary.) _____

No allowable will be assigned to the well until all interests have been consolidated (by communitization, unitization, forced-pooling, or otherwise) or until a non-standard unit, eliminating such interests, has been approved by the Commission.



CERTIFICATION

I hereby certify that the information contained herein is true and complete to the best of my knowledge and belief.

Cy Cowan

Name

Cy Cowan

Position

Regulatory Agent

Company

Yates Petroleum Corp.

Date

6/22/83

I hereby certify that the well location shown on this plat was plotted from field notes of actual surveys made by me or under my supervision, and that the same is true and correct to the best of my knowledge and belief.

Date Surveyed

5/31/83

Registered Professional Engineer and/or Land Surveyor

Herschel L. Jones

Certificate No.

3648

YATES PETROLEUM CORPORATION
Tabosa 'XP' Federal #1
660' FNL and 660' FEL
Section 1-T5S-R20E

In conjunction with Form 9-331C, Application for Permit to Drill subject well, Yates Petroleum Corporation submits the following ten items of pertinent information in accordance with USGS requirements.

1. The geologic surface formation is sandy alluvium.
2. The estimated tops of geologic markers are as follows:

San Andres	Surface
Yeso	300'
Abo	2067'
Pre-Cambrian	3242'
TD	4000+
3. The estimated depths at which anticipated water, oil or gas formations are expected to be encountered:

Water: 250-350'

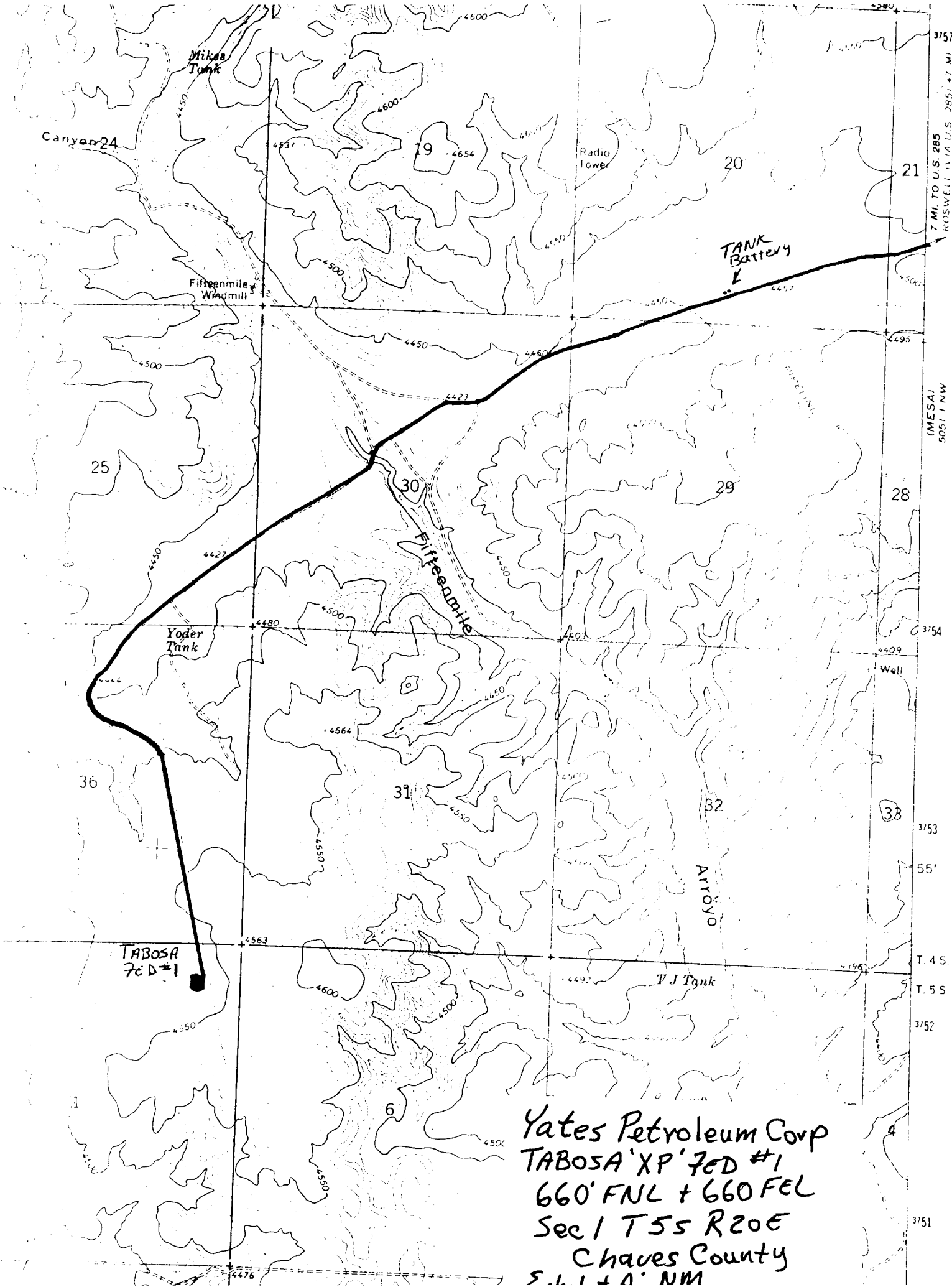
Oil or Gas: Abo 2067, 4000+
4. Proposed Casing Program: See Form 9-331C.
5. Pressure Control Equipment: See Form 9-331C.
6. Mud Program: See Form 9-331C.
7. Auxiliary Equipment: Kelly Cock; pit level indicators and flow sensor equipment; sub with full-opening valve on floor, drill pipe connection.
8. Testing, Logging and Coring Program:

Samples: Surface casing to TD.

DST's: As warranted.

Coring: None.

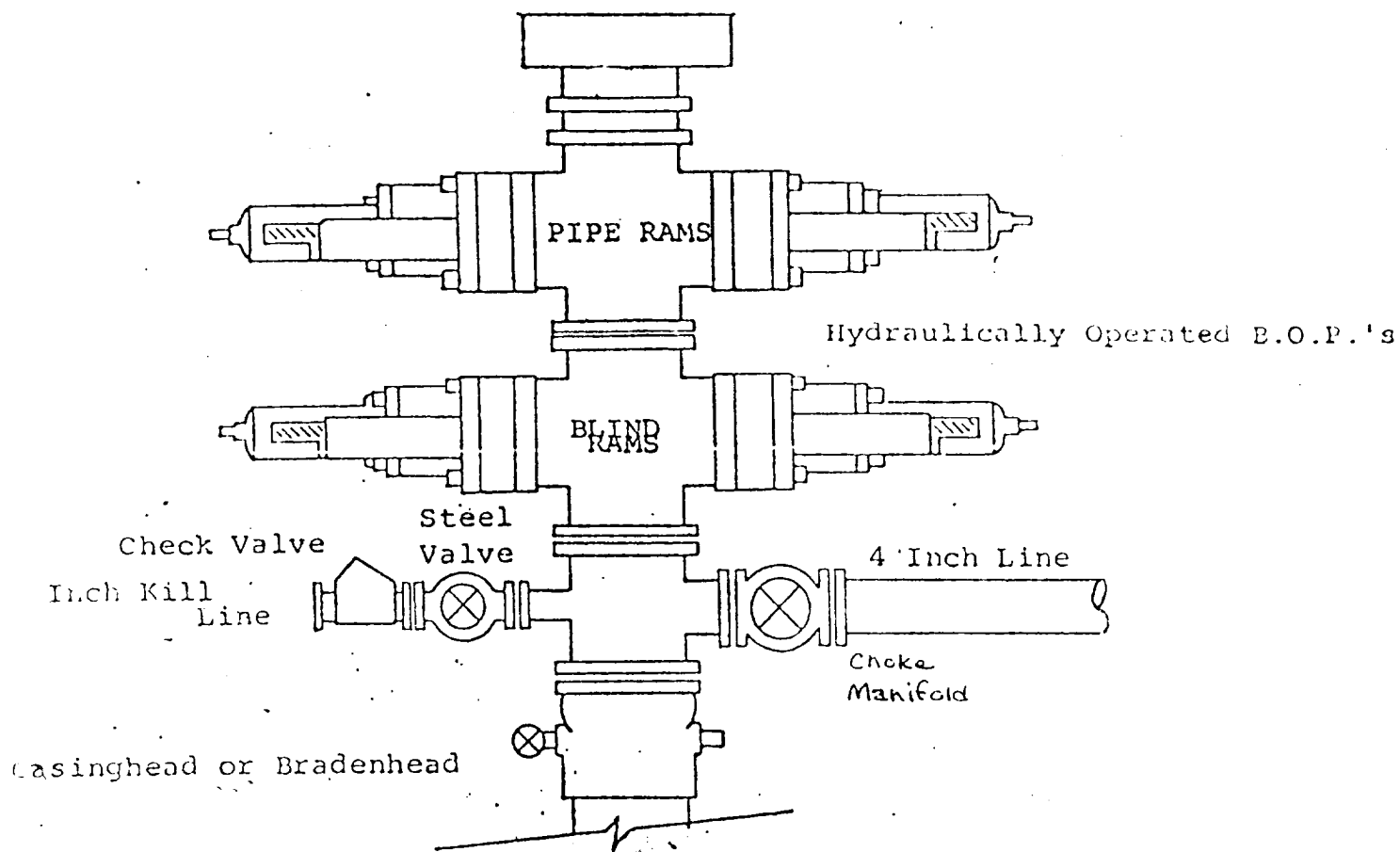
Logging: CNL-FDC TD to csg w/GR-CNL to surface, DLL from TD to csg.
9. No abnormal pressures or temperatures are anticipated.
10. Anticipated starting date: As soon as possible after approval.



Yates Petroleum Corp
TABOSA XP 7cD #1
660' FNL + 660' FEL
Sec 1 T5S R20E
Chaves County
S. 1.1 + 0.1 NM

EXHIBIT B

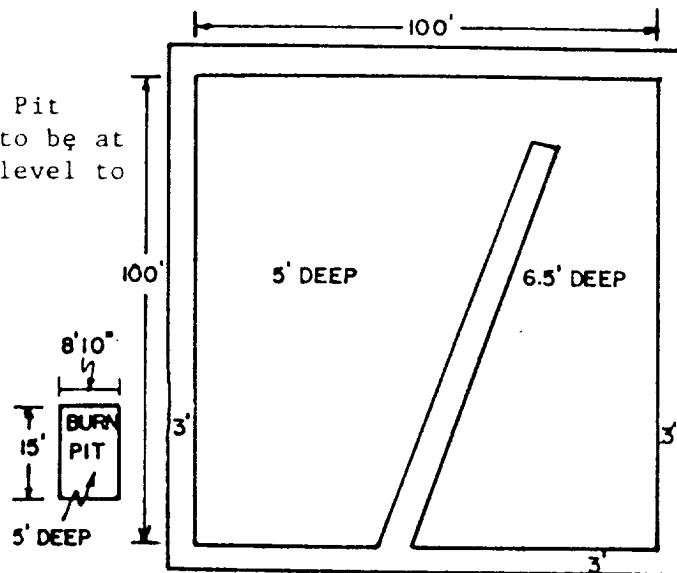
BOP DIAGRAM



YATES PETROLEUM CORP.

Exhibit C

Reserve Pit
bottom to be at
ground level to
1 ft.



NOTE:

Inside walls must be as
high and wide as outer
walls of pit.

