

NM OIL CO. COMMISSION  
Drawer DD  
Artesia, NM 88210  
UNITED STATES  
DEPARTMENT OF THE INTERIOR  
GEOLOGICAL SURVEYSUBMIT IN PLICATE\*  
(Other instructions on  
reverse side)Form approved.  
Budget Bureau No. 42-R1425.

30-005-62104

5. LEASE DESIGNATION AND SERIAL NO.  
NM-34649

6. IF INDIAN, ALLOTTEE OR TRIBE NAME

7. UNIT AGREEMENT NAME

8. FARM OR LEASE NAME  
Monaghan Federal

9. WELL NO.  
2

10. FIELD AND POOL, OR WILDCAT  
South Pecos Slope Abo

11. SEC., T., R., M., OR BLK.  
AND SURVEY OR AREA  
Sec. 10, T9S, R25E

12. COUNTY OR PARISH  
Chaves

13. STATE  
New Mexico

1a. TYPE OF WORK  
DRILL ☒ DEEEN ☐ RECEIVED ☐ PLUG BACK ☐

b. TYPE OF WELL  
OIL WELL ☐ GAS WELL ☒ OTHER ☐

2. NAME OF OPERATOR  
Mesa Petroleum Co. ✓

3. ADDRESS OF OPERATOR  
P. O. Box 2009 / Amarillo, Texas 79189

4. LOCATION OF WELL (Report location clearly and in accordance with any State requirements.)\*  
At surface 660' FNL & 1980' FEL NW 1/4 NE 1/4  
At proposed prod. zone Same

14. DISTANCE IN MILES AND DIRECTION FROM NEAREST TOWN OR POST OFFICE\*  
17 miles northeast of Roswell, New Mexico

15. DISTANCE FROM PROPOSED\*  
LOCATION TO NEAREST  
PROPERTY OR LEASE LINE, FT.  
(Also to nearest drig. unit line, if any) 660' / 660'

16. NO. OF ACRES IN LEASE  
480

17. NO. OF ACRES ASSIGNED  
TO THIS WELL  
160

18. DISTANCE FROM PROPOSED LOCATION\*  
TO NEAREST WELL DRILLING, COMPLETED,  
OR APPLIED FOR, ON THIS LEASE, FT. 1650'

19. PROPOSED DEPTH  
4500'

20. ROTARY OR CABLE TOOLS  
Rotary

21. ELEVATIONS (Show whether DF, RT, GR, etc.)  
3555' GR

22. APPROX. DATE WORK WILL START\*  
January 1, 1984

23. PROPOSED CASING AND CEMENTING PROGRAM

SIZE OF HOLE	SIZE OF CASING	WEIGHT PER FOOT	SETTING DEPTH	QUANTITY OF CEMENT
14 3/4"	10 3/4"	40.5#	950'	700/300 SURFACE
9 1/2"	7 5/8"	26.4#	1600'	700/300 TIE BACK
6 1/4"	4 1/2"	10.5#	4500'	300 COVER ABO

Propose to drill 14 3/4" hole with fresh water to approximately 950' and run 10 3/4" casing. Will cement to surface and test casing with cementing head to 600 psi. Will reduce hole to 7 7/8" and drill on mud to a TD of approximately 4500' and run 4 1/2" casing. If circulation has been lost, will then ream out hole to 9 1/2" and run 7 5/8" casing to 1600' and drill out to TD with 6 1/4" hole.

Operator's gas sales are dedicated.

XC: BLM-R (O+6), CEN RCDS, ACCTG, MAT CONT, OPS(FILE), MIDLAND, ROSWELL, PARTNERS

IN ABOVE SPACE DESCRIBE PROPOSED PROGRAM: If proposal is to deepen or plug back, give data on present productive zone and proposed new productive zone. If proposal is to drill or deepen directionally, give pertinent data on subsurface locations and measured and true vertical depth. Give blowout preventer program, if any.

24.

SIGNED R. E. Machie TITLE REGULATORY COORDINATOR DATE 12/15/83

(This space for Federal or State office use)

PERMIT NO. \_\_\_\_\_ APPROVAL DATE \_\_\_\_\_

APPROVED BY s/R. Stovall TITLE Acting District Manager DATE JAN 03 1984

CONDITIONS OF APPROVAL, IF ANY: \_\_\_\_\_

APPROVAL SUBJECT TO  
GENERAL REQUIREMENTS AND  
SPECIAL STIPULATIONS  
ATTACHED

\*See Instructions On Reverse Side

Posted A.P.D.  
SD-1 w/Book  
1-13-84

## Instructions

**General:** This form is designed for submitting proposals to perform certain well operations, as indicated, on all types of lands and leases for appropriate action by either a Federal or a State agency, or both, pursuant to applicable Federal and/or State laws and regulations. Any necessary special instructions concerning the use of this form and the number of copies to be submitted, particularly with regard to local, area, or regional procedures and practices, either are shown below or will be issued by, or may be obtained from, the local Federal and/or State office.

**Item 1:** If the proposal is to redrill to the same reservoir at a different subsurface location or to a new reservoir, use this form with appropriate notations. Consult applicable State or Federal regulations concerning subsequent work proposals or reports on the well.

**Item 4:** If there are no applicable State requirements, locations on Federal or Indian land should be described in accordance with Federal requirements. Consult local State or Federal office for specific instructions.

**Item 14:** Needed only when location of well cannot readily be found by road from the land or lease description. A plat, or plat, separate or on this reverse side, showing the roads to, and the surveyed location of, the well, and any other required information, should be furnished when required by Federal or State agency offices.

**Items 15 and 18:** If well is to be, or has been directionally drilled, give distances for subsurface location of hole in any present or objective production zone.

**Item 22:** Consult applicable Federal or State regulations, or appropriate officials, concerning approval of the proposal before operations are started.

## OIL CONSERVATION DIVISION

STATE OF NEW MEXICO  
ENERGY AND MINERALS DEPARTMENTP. O. BOX 2088  
SANTA FE, NEW MEXICO 87501Form C-102  
Revised 10-1-78

All distances must be from the outer boundaries of the Section.

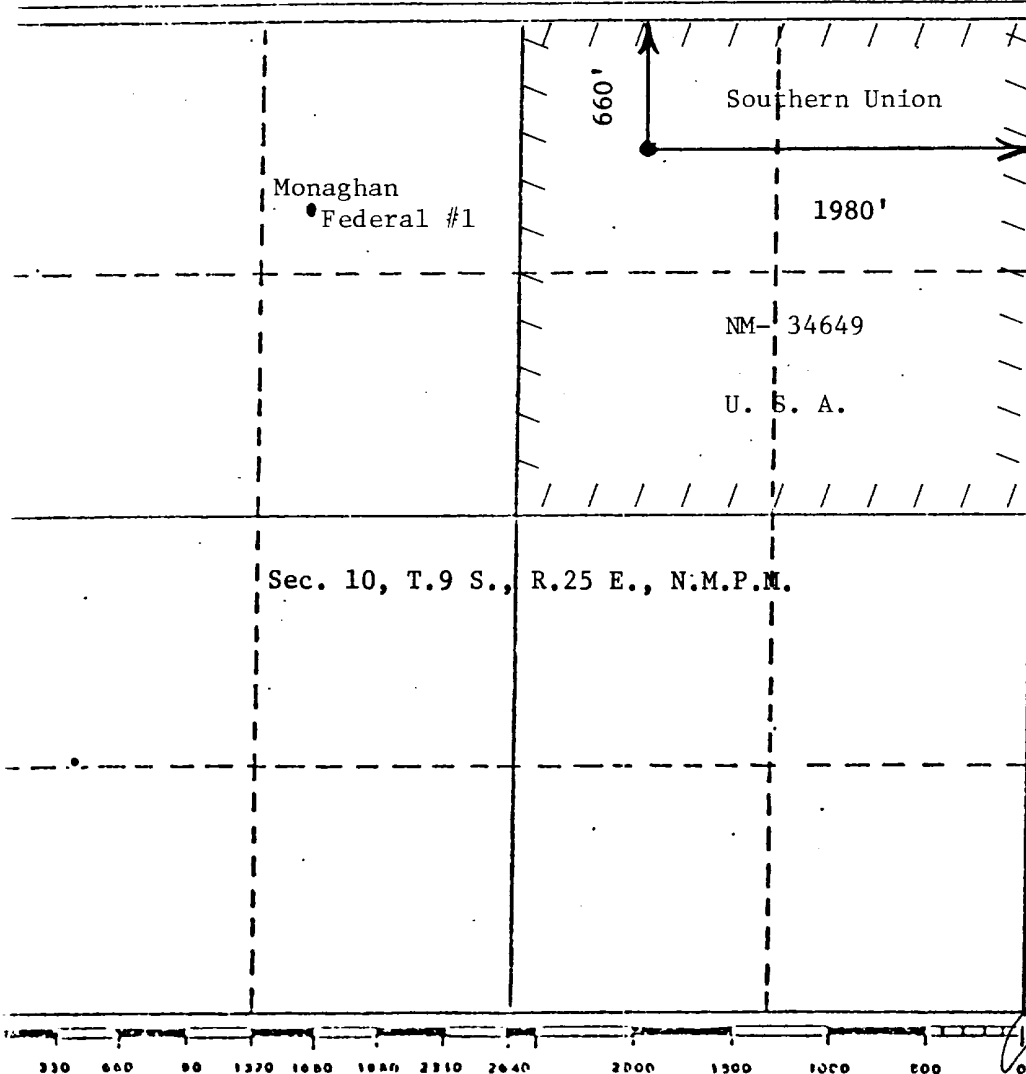
Operator Mesa Petroleum Co.			Lease Monaghan Federal		Well No. #2
Plot Letter B	Section 10	Township 9 South	Range 25 East	County Chaves	
Actual Postage Location of Well: 660 feet from the North line and 1980 feet from the East line					
Ground Level Elev. 3555	Producing Formation Abo		Pool <u>South</u> Under Pecos Slope Abo		Dedicated Acreage: NE 1/4 160 Acres

1. Outline the acreage dedicated to the subject well by colored pencil or hatchure marks on the plat below.
2. If more than one lease is dedicated to the well, outline each and identify the ownership thereof (both as to working interest and royalty).
3. If more than one lease of different ownership is dedicated to the well, have the interests of all owners been consolidated by communitization, unitization, force-pooling, etc?

☐ Yes ☐ No If answer is "yes," type of consolidation \_\_\_\_\_

If answer is "no," list the owners and tract descriptions which have actually been consolidated. (Use reverse side of this form if necessary.) \_\_\_\_\_

No allowable will be assigned to the well until all interests have been consolidated (by communitization, unitization, forced-pooling, or otherwise) or until a non-standard unit, eliminating such interests, has been approved by the Division.



## CERTIFICATION

I hereby certify that the information contained herein is true and complete to the best of my knowledge and belief.

*R. E. Mathis*

Name

R. E. Mathis

Position

Regulatory Coordinator

Company

Mesa Petroleum Co.

Date

12/15/83

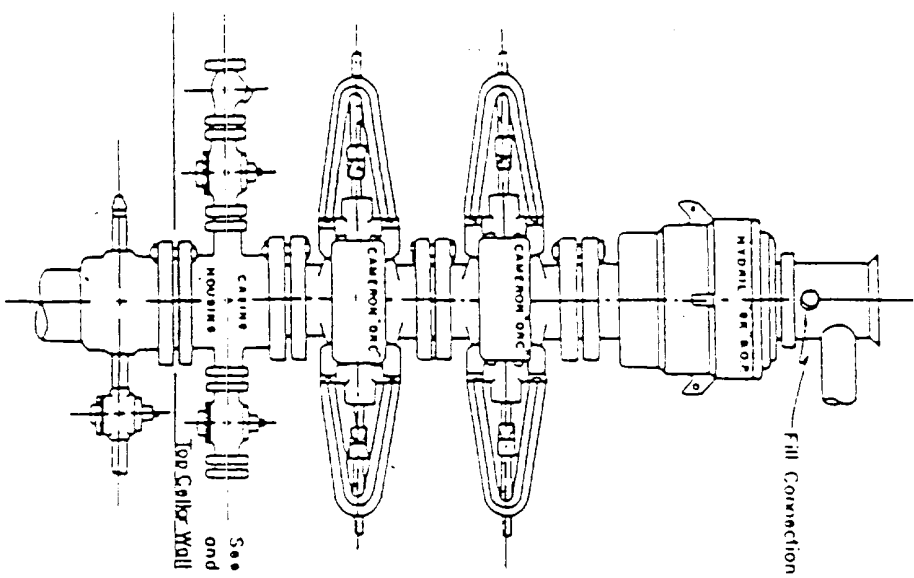
I hereby certify that the well location shown on this plat was plotted from field notes of actual surveys made by me or under my supervision, and that the same is true and correct to the best of my knowledge and belief.

Date Surveyed  
December 9, 1983Registered Professional Engineer  
and/or Land Surveyor

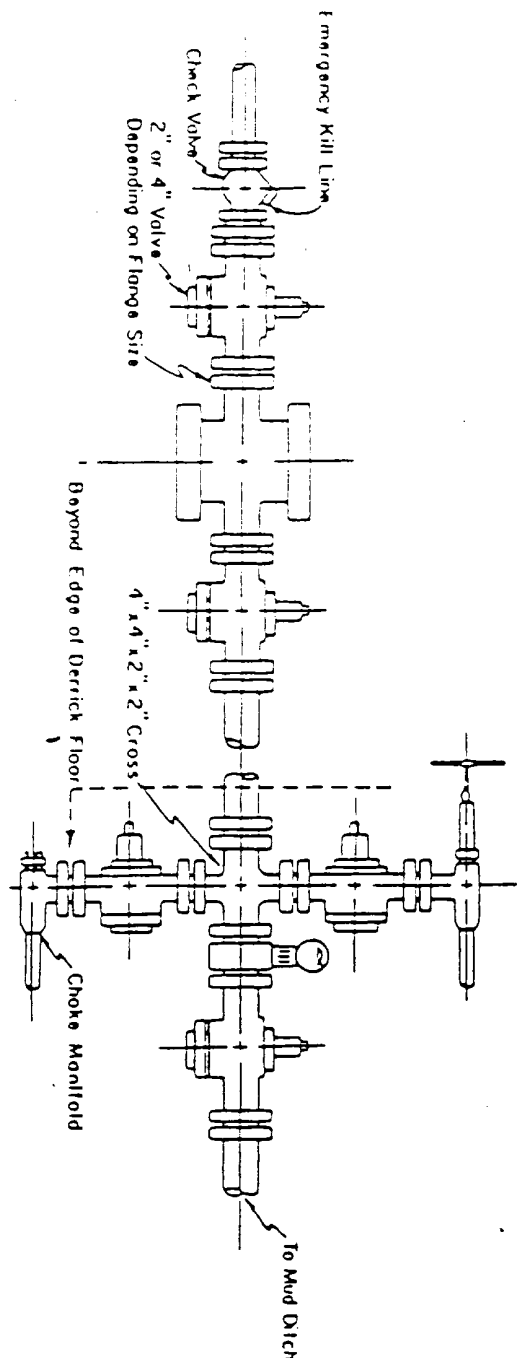
John D. Jaquess, P.E. &amp; L.S.

Certificate No. 6290

Blow-out Preventers hydril and choke manifold are all 900 Series



3,000 PSI WORKING PRESSURE  
BLOW-OUT PREVENTER HOOK-UP



3,000 PSI WORKING PRESSURE  
KILL, CHOKE, AND FILL CONNECTIONS

DETAIL OF 4" FLOW LINE CHOKE ASSEMBLY

Minimum assembly for 3,000 PSI working pressure will consist of three preventers.  
The bottom and middle preventers may be Cameron.

NOTE: HYDRIL, not installed on shallow-low pressure wells.  
RAM type BOPs are API 10" X 3000 PSI



**MESA**  
PETROLEUM CO.  
ONSHORE DIVISION

EXHIBIT VI

BY:	DRAWN BY:
DATE:	SCALE:

APPLICATION FOR PERMIT TO DRILL

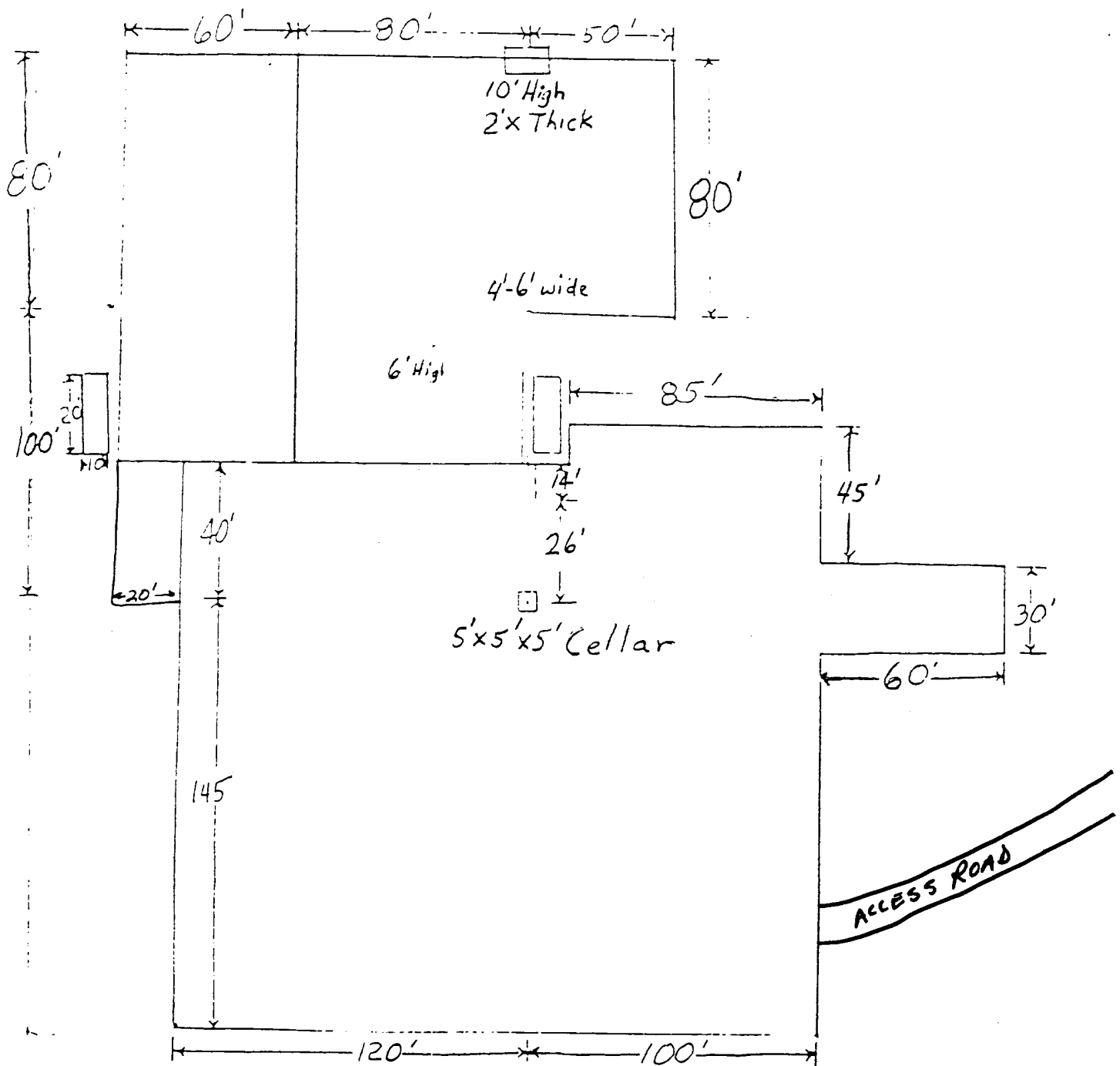
MESA PETROLEUM CO.  
MONAGHAN FEDERAL #2  
660' FNL & 1980' FEL, SEC. 10, T9S, R25E  
CHAVES COUNTY, NEW MEXICO

LEASE NO. NM-34649

In conjunction with Form 9331-C, Application For Permit To Drill subject well, the following additional information is provided:


1. Applicable portions of the GENERAL REQUIREMENTS FOR OIL AND GAS OPERATIONS ON FEDERAL LEASES, Roswell District, Geological Survey of September 1, 1980 will be adhered to.
2. Geological markers are estimated as follows:

Seven Rivers	Surface
San Andres	802'
Glorieta	1406'
Tubb	2966'
Abo	3672'
3. Hydrocarbon bearing strata may occur in the Abo formation(s). No fresh water is expected to be encountered below 950'.
4. The Casing and Blowout Preventer Program will be determined by hole conditions as encountered. See Exhibit VI. Anticipate drilling with fresh water/mud using ram type preventer and rotating head for well control. The 10 3/4" casing will be set at approximately 950' to protect any fresh water zones and cemented to the surface. The 7 5/8" casing will be set at approximately 1600' if water zones have been encountered or omitted if not and ram type preventers installed. Sufficient amounts and kinds of cement would be used to ensure any water, gas, or oil zones encountered are isolated and shut off down to the casing point if run. The 4 1/2" production casing will be set at total depth or shallower depending upon the depth of the deepest commercial hydrocarbon bearing strata encountered.
5. No drill stem test or coring program is planned. The logging program may consist of a GR-CNL from surface to total depth and FDC from casing point to total depth.
6. Anticipated drilling time is ten days with completion operations to follow as soon as a completion unit is available.



6"-8" Watered & Compacted Caliche  
ON PAD ; ROAD IF NEEDED



		<b>MESA</b> PETROLEUM CO.	
		ONSHORE DIVISION	
EXHIBIT V			
BY:		DRAWN BY:	
DATE:		SCALE:	

