

GEOLOGICAL SURVEY

DRILL

JUN 06 1984

PLUG BACK ☐

b. TYPE OF WELL

OIL

GAS

O. C. D.

SINGLE

MULT

2. NAME OF OPERATOR

Stevens Operating Corporation M

3. ADDRESS OF OPERATOR

P. O. Box 2203 Roswell, NM 88201

4. LOCATION OF WELL (Report location clearly and in accordance with any State requirements)

At surface 1980 FNL 1980 FWL Sec 14 T-7-S R-26-E

At proposed prod. zone	Same
------------------------	------

14. DISTANCE IN MILES AND DIRECTION FROM NEAREST TOWN OR POST OFFICE*

26 Air Miles Northeast of Roswell

15. DISTANCE FROM PROPOSED*
LOCATION TO NEAREST
PROPERTY OR LEASE LINE, FT.
(Also to nearest drlg. unit line, if any)

16. NO. OF ACRES IN LEASE
1280

18. DISTANCE FROM PROPOSED LOCATION*
TO NEAREST WELL, DRILLING, COMPLETED,
OR APPLIED FOR ON THIS LEASE, FT.

19. PROPOSED DEPTH
4750

21. ELEVATIONS (Show whether DF, RT, GR, etc.)

3763 GR

PROPOSED CASING AND CEMENTING PROGRAM

SIZE OF HOLE	SIZE OF CASING	WEIGHT PER FOOT	SETTING DEPTH
12 1/4	8 5/8	24.00	900
7 7/8	4 1/2	10.50	4750

Well will be drilled to total depth of 4750' & all potential zones evaluated. If commercial production is indicated, well will be selectively perforated & stimulated.

Attached Are:

1. Well location and dedication plat.
2. Supplemental drilling data.
3. Surface use plan.

Gās is not dedicated to pipeline.

IN ABOVE SPACE DESCRIBE PROPOSED PROGRAM: If proposal is to deepen or plug back, give data on present productive zone. If proposal is to drill or deepen directionally, give pertinent data on subsurface locations and measured and true dip. Give blowout preventer program, if any.

SIGNED

TITLE Production Controller

(This space for Federal or State office use)

PERMIT NO.**APPROVAL DATE**

APPROVED BY S/Homer Meyer, Acting

TITLE Area Manager

CONDITIONS OF APPROVAL, IF ANY:

***See Instructions On Reverse Side**

MEXICO OIL CONSERVATION COMMISSION
WELL LOCATION AND ACREAGE DEDICATION PLAT

Form C-102
 Supersedes C-128
 Effective 1-1-65

All distances must be from the outer boundaries of the Section

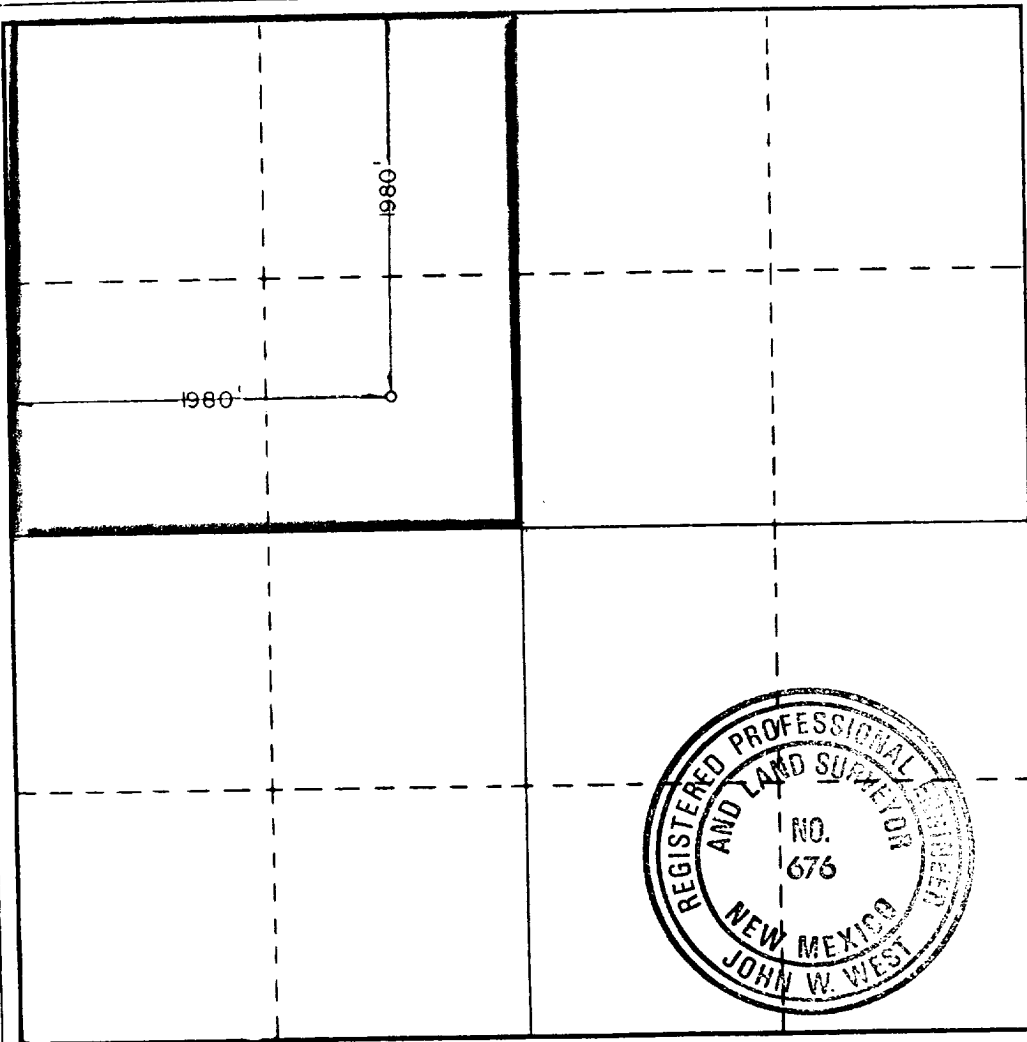
Operator STEVENS OPERATING CO.		Lease HANAGAN FED		Well No. 5
Unit Letter F	Section 14	Township 7S	Range 26E	County CHAVES
Actual Footage Location of Well:				
1980 feet from the NORTH line and		1980 feet from the WEST line		
Ground Level Elev. 3762.9	Producing Formation Abo	Pool Pecos Slope Abo	Dedicated Acreage: 160 Acres	

1. Outline the acreage dedicated to the subject well by colored pencil or hachure marks on the plat below.
2. If more than one lease is dedicated to the well, outline each and identify the ownership thereof (both as to working interest and royalty).
3. If more than one lease of different ownership is dedicated to the well, have the interests of all owners been consolidated by communitization, unitization, force-pooling, etc?

☐ Yes ☐ No If answer is "yes," type of consolidation _____

If answer is "no," list the owners and tract descriptions which have actually been consolidated. (Use reverse side of this form if necessary.) _____

No allowable will be assigned to the well until all interests have been consolidated (by communitization, unitization, forced-pooling, or otherwise) or until a non-standard unit, eliminating such interests, has been approved by the Commission.



CERTIFICATION

I hereby certify that the information contained herein is true and complete to the best of my knowledge and belief.

Name John V. Walker
 Position Geologist

Company Stevens Operating Corporation

Date _____

I hereby certify that the well location shown on this plat was plotted from field notes of actual surveys made by me or under my supervision, and that the same is true and correct to the best of my knowledge and belief.

Date Surveyed 5/22/84

Registered Professional Engineer and/or Land Surveyor

John W. West
 Certificate No. JOHN W. WEST, 676

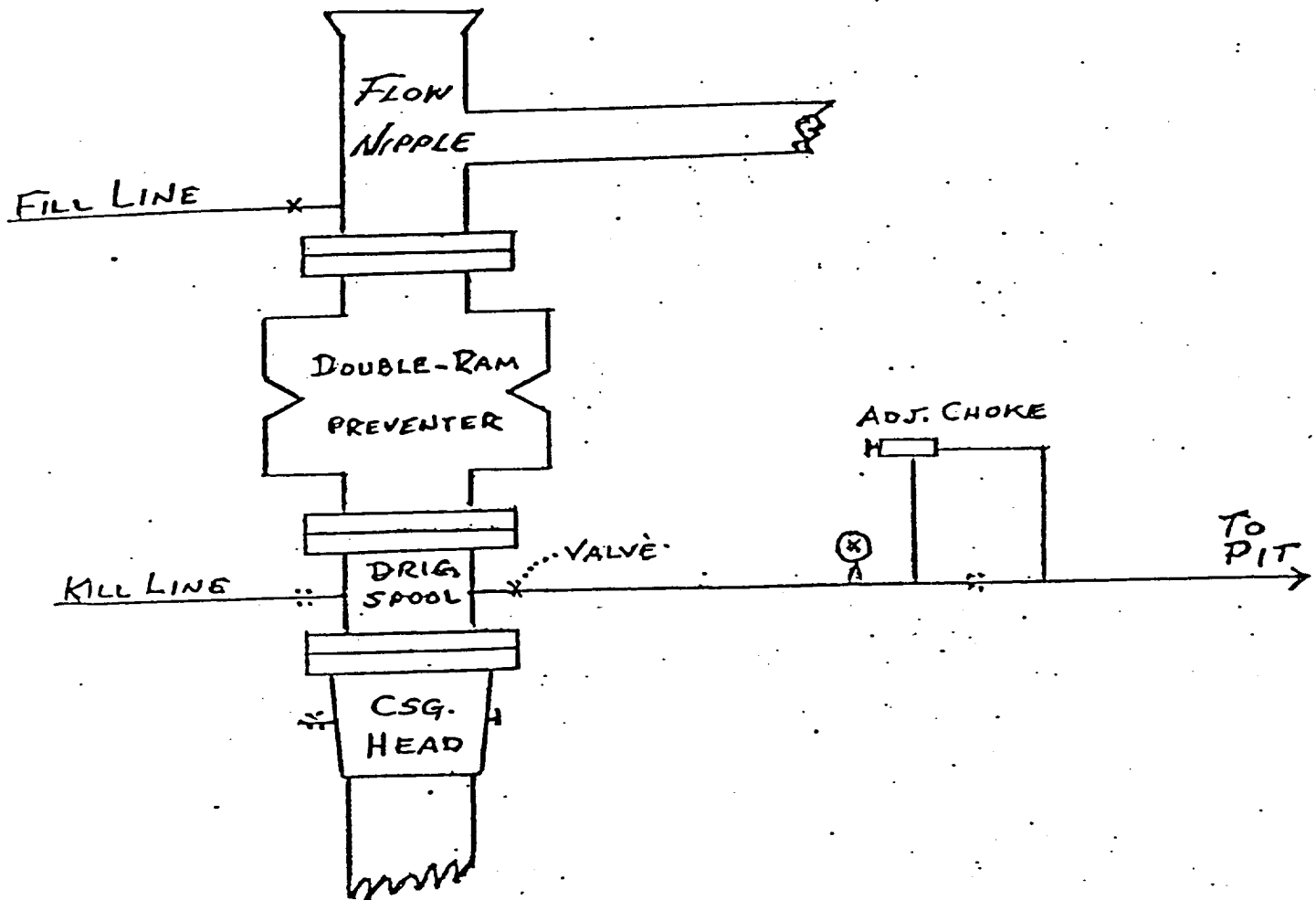
RONALD J. EIDSON, 3239

0 330 660 990 1320 1650 1980 2310 2640 2000 1800 1000 800 0

B O P & CHOKE MANIFOLD

SERIES 900

Hanagan Fed. #5



STEVENS OPERATING CORPORATION
Well #5 HANAGAN FEDERAL
1980 FNL 1980 FWL, Sec. 14, T-7-S R-26-E
CHAVES COUNTY, NEW MEXICO

SUPPLEMENTAL DRILLING DATA

STEVENS OPERATING CORPORATION
Well #5 HANAGAN FEDERAL
1980 FNL 1980 FWL, Sec. 14, T-7-S R-26-E
CHAVES COUNTY, NEW MEXICO

1. SURFACE FORMATION: Alluvium

2. ESTIMATED TOPS OF GEOLOGIC MARKERS:

San Andres	850'	P-1	1370'
Glorieta	2028'	Yeso	3460'
Abo	4160'	TD	4750'

3. ANTICIPATED POROSITY ZONES:

Water	150' - 200'
Oil	1000' - 1670'
Gas	4160' - 4750'

4. CASING DESIGN:

<u>Size</u>	<u>Interval</u>	<u>Weight</u>	<u>Grade</u>	<u>Joint</u>	<u>Condition</u>
8 5/8"	0 - 900'	24.0#	K-55	STC	New
4 1/2"	0 - 4750'	10.5#	K-55	STC	New

5. SURFACE CONTROL EQUIPMENT: A double Ram-type preventer. (900 Series) A Sketch of BOP stack is attached.

6. CIRCULATING MEDIUM:

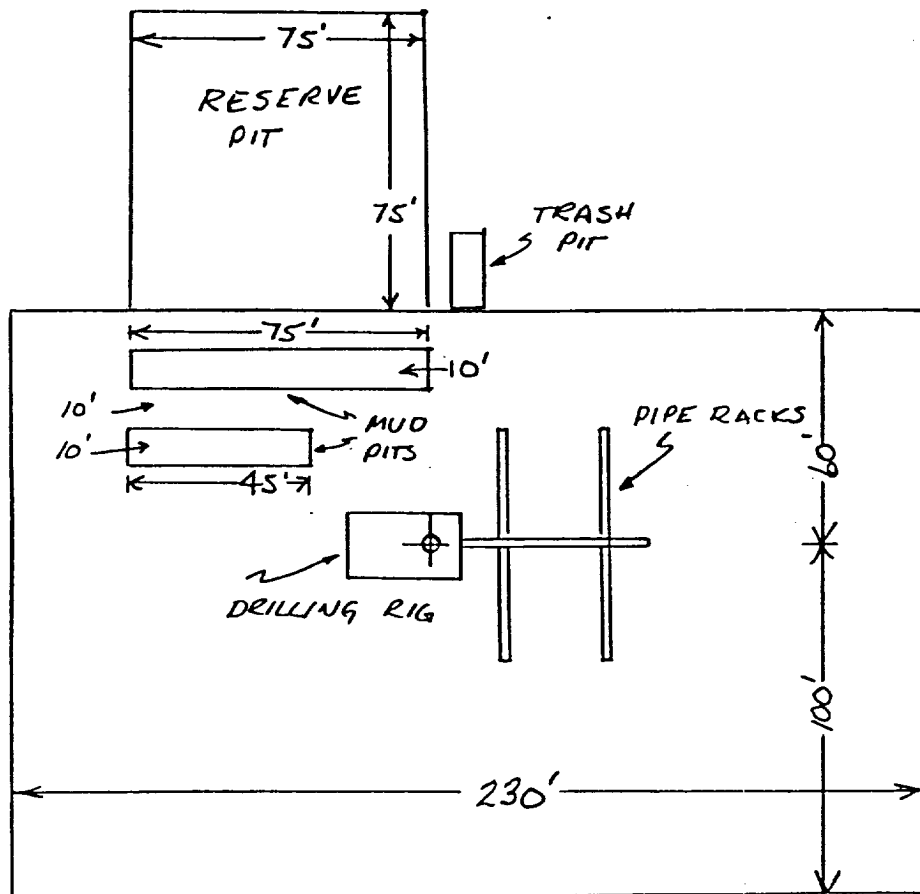
0 - 900	Fresh water mud with gel added if needed.
900 - 4750	Salt water mud, conditioned as necessary for control of viscosity and water loss.

7. AUXILIARY EQUIPMENT: Drill string safety valve.

8. TESTING, LOGGING AND CORING PROGRAMS: Coring & testing may be performed in zones of interest. Compensated Neutron-Formation Density w/Gamma Ray Log. 0 - T.D.. Dual Laterlog Shoe to T.D.

9. ABNORMAL PRESSURES, TEMPERATURES OR GASES: None anticipated.

10. ANTICIPATED DATES: It is planned that drilling operations will commence about July 23, 1984. Duration of drilling and completion operations should be 20 to 60 days.



STEVENS OPERATING CORPORATION
 Well #5 HANAGAN FEDERAL
 1980 FNL 1980 FWL, Sec. 14, T-7-S R-26-E
 CHAVES COUNTY, NEW MEXICO

EXHIBIT "D"

SKETCH OF WELL PAD