

UNITED STATES
DEPARTMENT OF THE INTERIOR
GEOLOGICAL SURVEY

APPLICATION FOR PERMIT TO DRILL, DEEPEN, OR PLUG BACK

1a. TYPE OF WORK

DRILL ☒ARTESIA OFFICE
DEEPEN ☐PLUG BACK ☐

b. TYPE OF WELL

OIL
WELL ☐GAS
WELL ☒

OTHER

SINGLY
ZONED ☐MULTIPLE
ZONED ☐

2. NAME OF OPERATOR

Stevens Operating Corporation

3. ADDRESS OF OPERATOR

P. O. Box 2203, Roswell, New Mexico 88201

4. LOCATION OF WELL (Report location clearly and in accordance with any State requirements.)*

At surface

1680 FNL 1980 FEL, Sec. 4, T7S, R26E

At proposed prod. zone Same

14. DISTANCE IN MILES AND DIRECTION FROM NEAREST TOWN OR POST OFFICE*

26 air miles northeast of Roswell, New Mexico 88201

15. DISTANCE FROM PROPOSED*

LOCATION TO NEAREST
PROPERTY OR LEASE LINE, FT.
(Also to nearest drlg. unit line, if any)

16. NO. OF ACRES IN LEASE

1160

18. DISTANCE FROM PROPOSED LOCATION*

TO NEAREST WELL, DRILLING, COMPLETED,
OR APPLIED FOR, ON THIS LEASE, FT.

19. PROPOSED DEPTH

4400'

21. ELEVATIONS (Show whether DF, RT, GR, etc.)

3630.4 GR 3645' 62

23. PROPOSED CASING AND CEMENTING PROGRAM

SIZE OF HOLE	SIZE OF CASING	WEIGHT PER FOOT	SETTING DEPTH
12 1/4"	8 5/8"	24.00#	750
7 7/8"	4 1/2"	10.50#	4400

Well will be drilled to a total depth of 4400' and all potential zones evaluated for commercial production is indicated. Well will be selectively perforated and completed.

Attached are:

1. Well location & Dedication Plat
2. Supplemental Drilling Data
3. Surface Use Plan

Gas is dedicated to Transwestern Pipeline Company under Contract #

IN ABOVE SPACE DESCRIBE PROPOSED PROGRAM: If proposal is to deepen or plug back, give data on present productive zone. If proposal is to drill or deepen directionally, give pertinent data on subsurface locations and measured preventer program, if any.

24.

SIGNED

TITLE Production Controller

(This space for Federal or State office use)

PERMIT NO.

APPROVAL DATE

SIPhil Kirk

Area Manager

APPROVED BY

TITLE

CONDITIONS OF APPROVAL, IF ANY:

NEW MEXICO OIL CONSERVATION COMMISSION
WELL LOCATION AND ACREAGE DEDICATION PLAT

Form O-102
Supersedes C-28
Effective 1-1-67

All distances must be from the outer boundaries of the Section

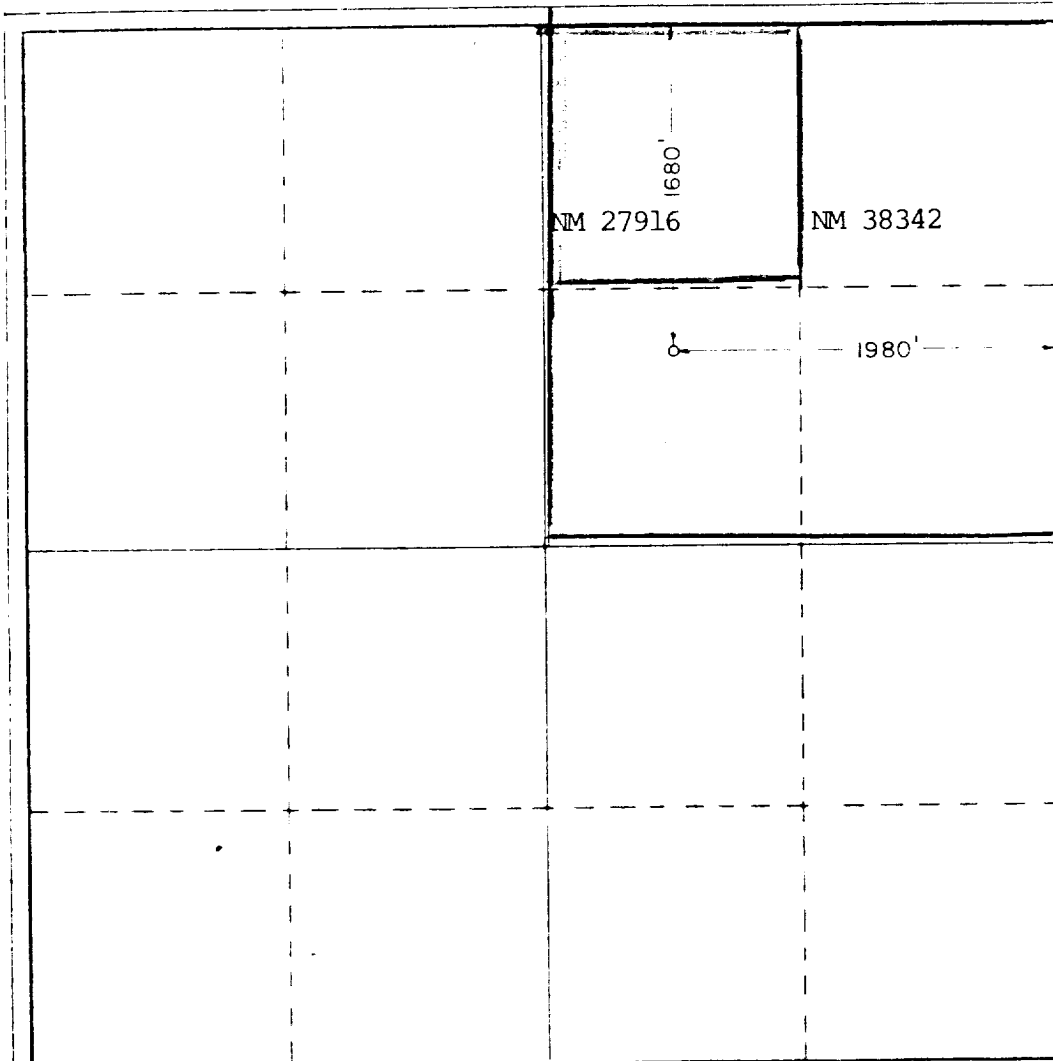
Operator Stevens Operating Corp.			Lease Helen Collins Fed.			Well No. 7		
Well Letter	Section	Township	Range	County				
		7 South	26 East	Chaves				
Actual Surface Location of Well:								
feet from the North line and			feet from the East line					
1980								
Ground Level Elev. 5000.0'	Producing Formation Abo		Pool Pecos Slope Abo			Dedicated Acreage: 160		

- Outline the acreage dedicated to the subject well by colored pencil or hatchure marks on the plat below.
- If more than one lease is dedicated to the well, outline each and identify the ownership thereof (both as to working interest and royalty).
- If more than one lease of different ownership is dedicated to the well, have the interests of all owners been consolidated by communitization, unitization, force-pooling, etc?

☐ Yes ☐ No If answer is "yes," type of consolidation _____

If answer is "no," list the owners and tract descriptions which have actually been consolidated. (Use reverse side of this form if necessary.) _____

No allowable will be assigned to the well until all interests have been consolidated (by communitization, unitization, forced-pooling, or otherwise) or until a non-standard unit, eliminating such interests, has been approved by the Commission.



CERTIFICATION

I hereby certify that the information contained herein is true and complete to the best of my knowledge and belief.

Pat Thompson
Name
Pat Thompson

Position
Production Controller

Company
Stevens Operating Corporation

Date
6-19-84

I hereby certify that the well location shown on this plat was plotted from field notes of actual surveys made by me or under my supervision, and that the same is true and correct to the best of my knowledge and belief.

Date Surveyed
June 14, 1984

Registered Professional Engineer
and Land Surveyor

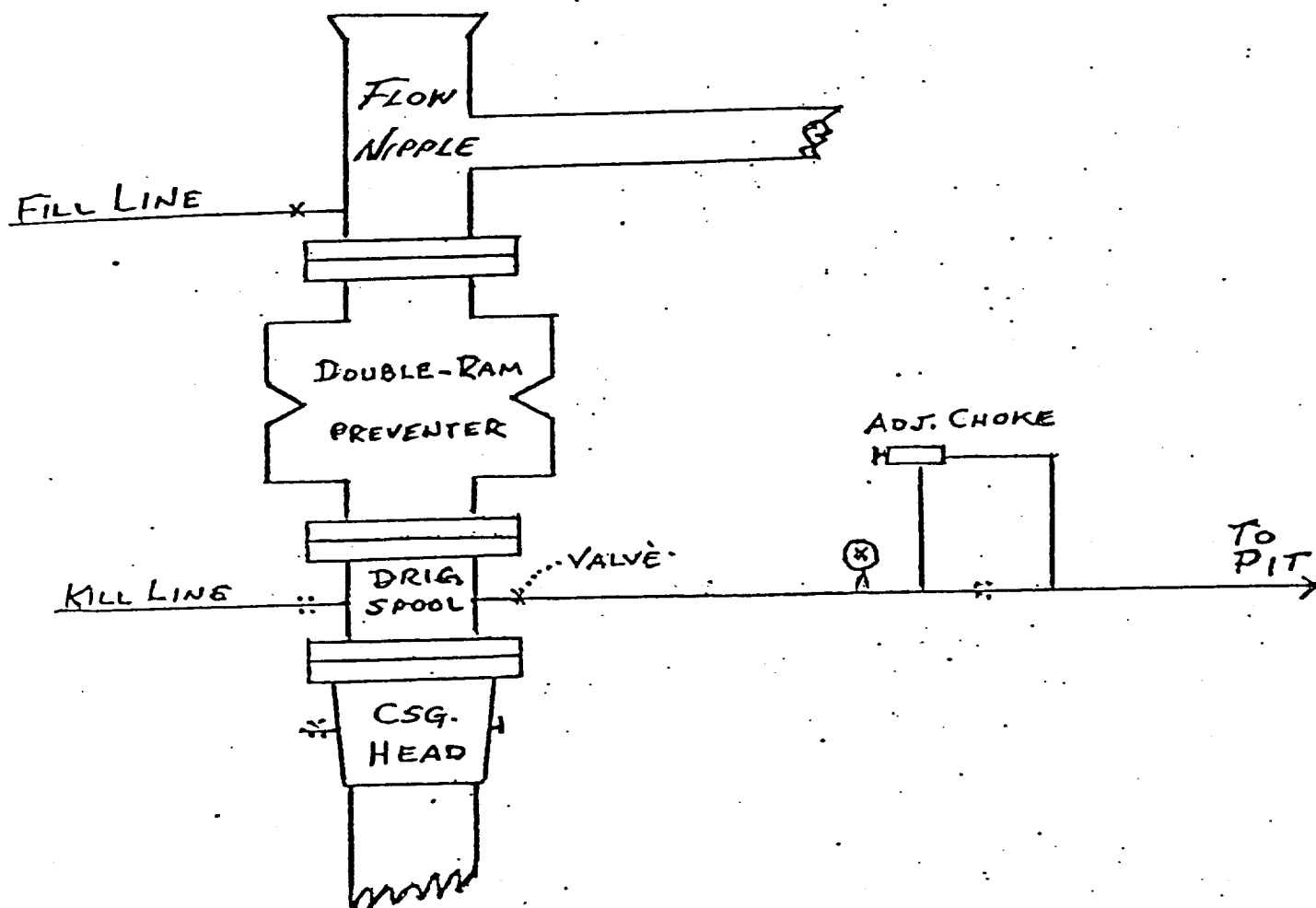
John W. West

Certificate No. JOHN W. WEST, 676
RONALD J. EIDSON, 3239

0 330 660 990 1320 1650 1980 2310 2640 2970 3300 3630 3960 4290 4620 4950 5280 5610 5940 6270 6600

B O P & CHOKE MANIFOLD

SERIES 900



STEVENS OPERATING CORPORATION
Well #7 HELEN COLLINS FEDERAL
1080 FNL 1980 FEL, Sec. 4, T-7-S R-26-E
CHAVES COUNTY, NEW MEXICO

SUPPLEMENTAL DRILLING DATA

STEVENS OPERATING CORPORATION
Well #7 HELEN COLLINS FEDERAL COM.
1680 FNL 1980 FEL, Sec. 4, T-7-S R-26-E
CHAVES COUNTY, NEW MEXICO

1. SURFACE FORMATION: Alluvium

2. ESTIMATED TOPS OF GEOLOGIC MARKERS:

San Andres	620'	P-1	1080'
Glorietta	1700'	Yeso	3100'
Abo	3820'	TD	4400'

3. ANTICIPATED POROSITY ZONES:

Water	150' - 200'
Oil	1000' - 1670'
Gas	3820' - 4400'

4. CASING DESIGN:

<u>Size</u>	<u>Interval</u>	<u>Weight</u>	<u>Grade</u>	<u>Joint</u>	<u>Condition</u>
8 5/8"	0 - 750'	24.0#	K-55	STC	New
4 1/2"	0 - 4400'	10.5#	K-55	STC	New

5. SURFACE CONTROL EQUIPMENT: A double Ram-type preventer. (900 Series) A Sketch of BOP stack is attached.

6. CIRCULATING MEDIUM:

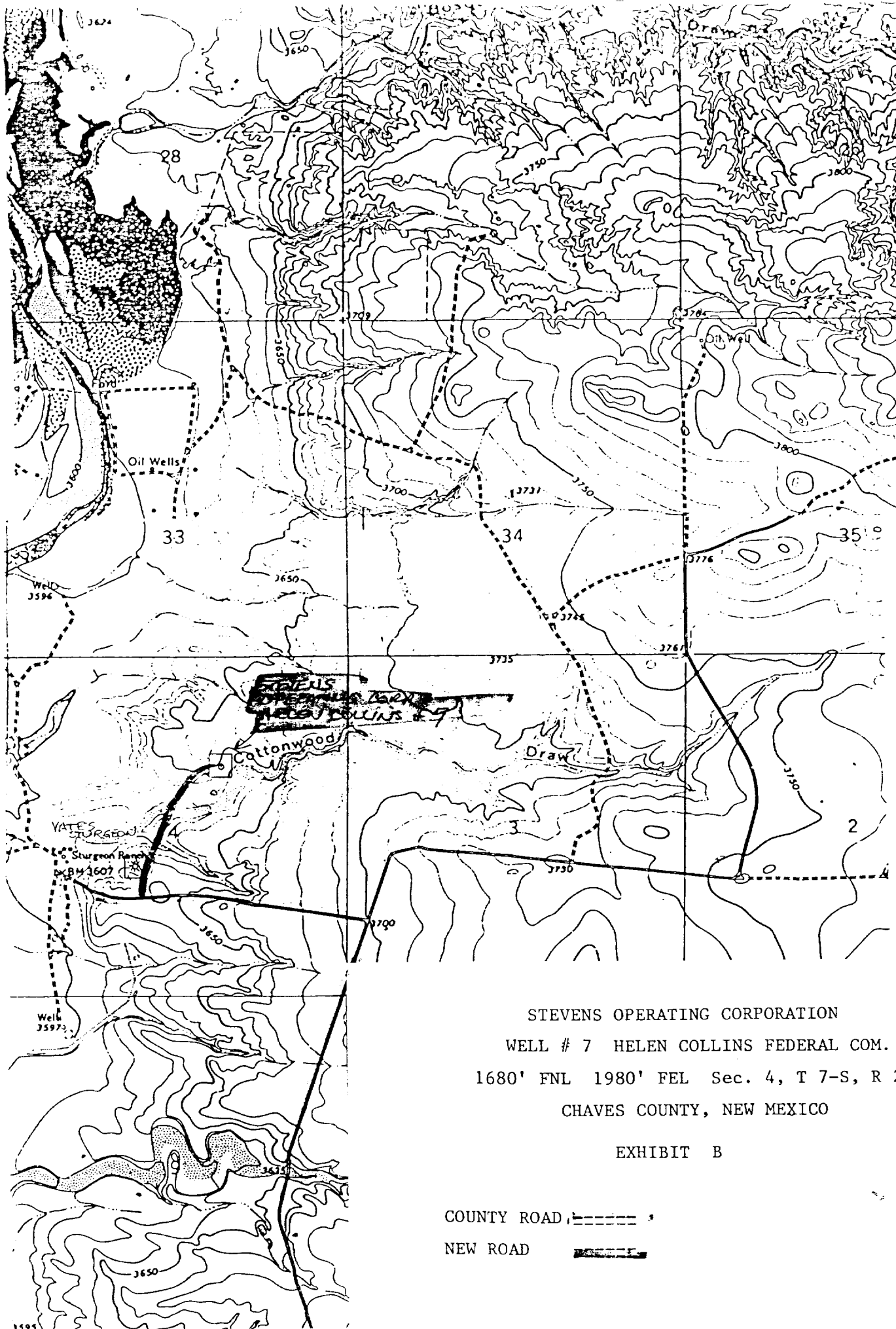
0 - 750	Fresh water mud with gel added if needed.
750 - 4400	Salt water mud, conditioned as necessary for control of viscosity and water loss.

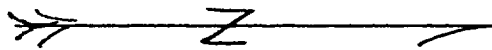
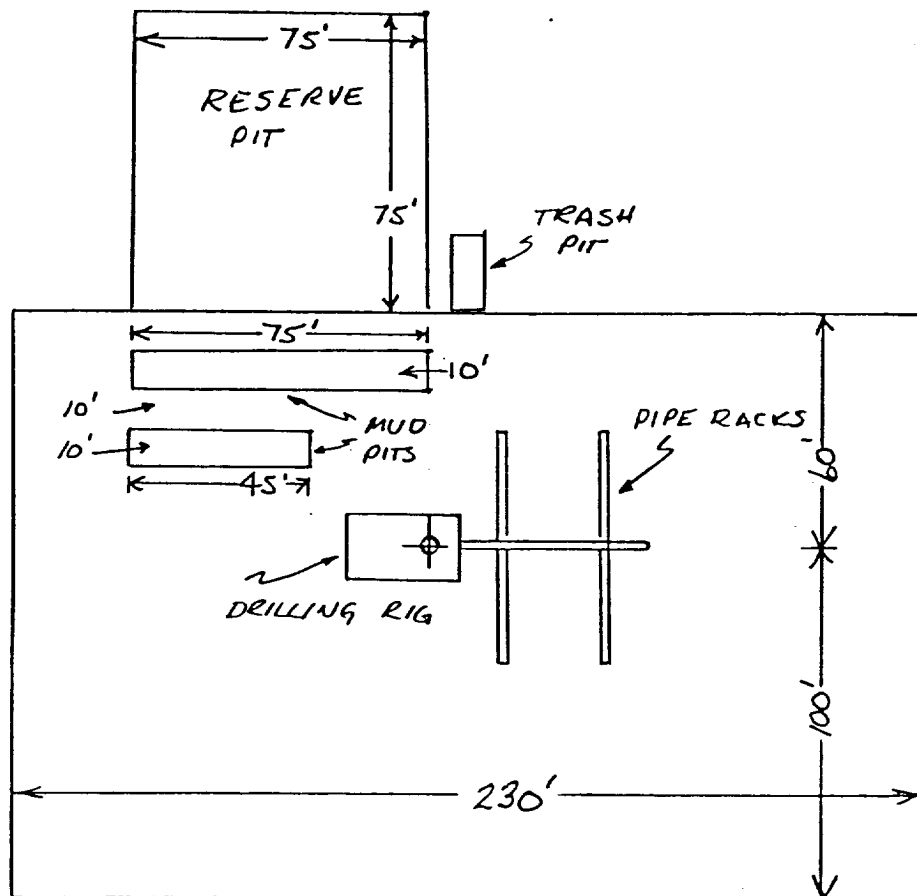
7. AUXILIARY EQUIPMENT: Drill string safety valve.

8. TESTING, LOGGING AND CORING PROGRAMS: Coring & testing may be performed in zones of interest. Compensated Neutron-Formation Density w/Gamma Ray Log. 0 - T.D.. Dual Laterlog Shoe to T.D.

9. ABNORMAL PRESSURES, TEMPERATURES OR GASES: None anticipated.

10. ANTICIPATED DATES: It is planned that drilling operations will commence about July 15, 1984. Duration of drilling and completion operations should be 20 to 60 days.





STEVENS OPERATING CORPORATION
 Well #7 HELEN COLLINS FEDERAL COM
 1080 FNL 1980 FEL, Sec. 4, T-7-S R-26-E
 CHAVES COUNTY, NEW MEXICO

EXHIBIT "D"

SKETCH OF WELL PAD