

UNITED STATES
DEPARTMENT OF THE INTERIOR
GEOLOGICAL SURVEYAPPLICATION FOR PERMIT TO ~~DRILL~~ DEEPEN, OR PLUG BACK

1a. TYPE OF WORK

DRILL ☒

JUL 15 1984

PLUG BACK ☐

b. TYPE OF WELL

OIL
WELL ☐GAS
WELL ☒

OTHER

O. C. D. SINGLE
ZONE ☐MULTIPLE
ZONE ☐

2. NAME OF OPERATOR

Yates Petroleum Corporation

3. ADDRESS OF OPERATOR

207 S. 4th, Artesia, New Mexico

4. LOCATION OF WELL (Report location clearly and in accordance with any State requirements.)*

At surface

1980' FNL and 1980' FWL

At proposed prod. zone

same

14. DISTANCE IN MILES AND DIRECTION FROM NEAREST TOWN OR POST OFFICE*

Approximately 43 miles northwest of Roswell, NM

15. DISTANCE FROM PROPOSED*

LOCATION TO NEAREST

PROPERTY OR LEASE LINE, FT.

(Also to nearest drlg. unit line, if any)

1980

16. NO. OF ACRES IN LEASE

1200

17. NO. OF ACRES ASSIGNED
TO THIS WELL

160

18. DISTANCE FROM PROPOSED LOCATION*

TO NEAREST WELL, DRILLING, COMPLETED,
OR APPLIED FOR, ON THIS LEASE, FT.

19. PROPOSED DEPTH*

2850'

20. ROTARY OR CABLE TOOLS

Rotary

21. ELEVATIONS (Show whether DF, RT, GR, etc.)

4507.1' GL

22. APPROX. DATE WORK WILL START*

ASAP

23.

PROPOSED CASING AND CEMENTING PROGRAM

SIZE OF HOLE	SIZE OF CASING	WEIGHT PER FOOT	SETTING DEPTH	QUANTITY OF CEMENT
17 1/2"	13 3/8"	48# H-40	400'	400 sx circulated
12 1/4"	8 5/8"	36# K-55	900'*	500 sx circulated
7 7/8"	4 1/2"	9.5# K-55	TD	200 sx

*as warranted

We propose to drill and test the Abo and intermediate formations. Approximately 400' of surface casing will be set and cement circulated to shut off gravel and caving. 8 5/8" intermediate casing will be run between 750'-1500' and cemented with enough cement to circulate to the surface. If commercial, production casing will be run and cemented with adequate cover, perforated and stimulated as needed for production.

MUD PROGRAM: FW gel/LCM to 400', brine to TD.

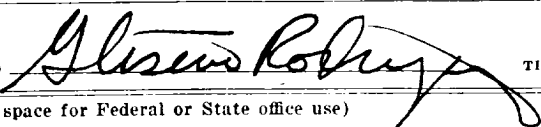
BOP PROGRAM: BOP's will be installed at the offset and tested daily.

GAS NOT DEDICATED.

IN ABOVE SPACE DESCRIBE PROPOSED PROGRAM: If proposal is to deepen or plug back, give data on present productive zone and proposed new productive zone. If proposal is to drill or deepen directionally, give pertinent data on subsurface locations and measured and true vertical depths. Give blowout preventer program, if any.

24.

SIGNED



TITLE Regulatory Agent

DATE 6/18/84

(This space for Federal or State office use)

PERMIT NO.

APPROVAL DATE

APPROVED BY

S/Phil Kirk

TITLE Area Manager

DATE 7-24-84

CONDITIONS OF APPROVAL, IF ANY:

**NEW MEXICO OIL CONSERVATION COMMISSION
WELL LOCATION AND ACREAGE DEDICATION PLAT**

Form C-102
Supersedes C-128
Effective 1-1-65

All distances must be from the outer boundaries of the Section.

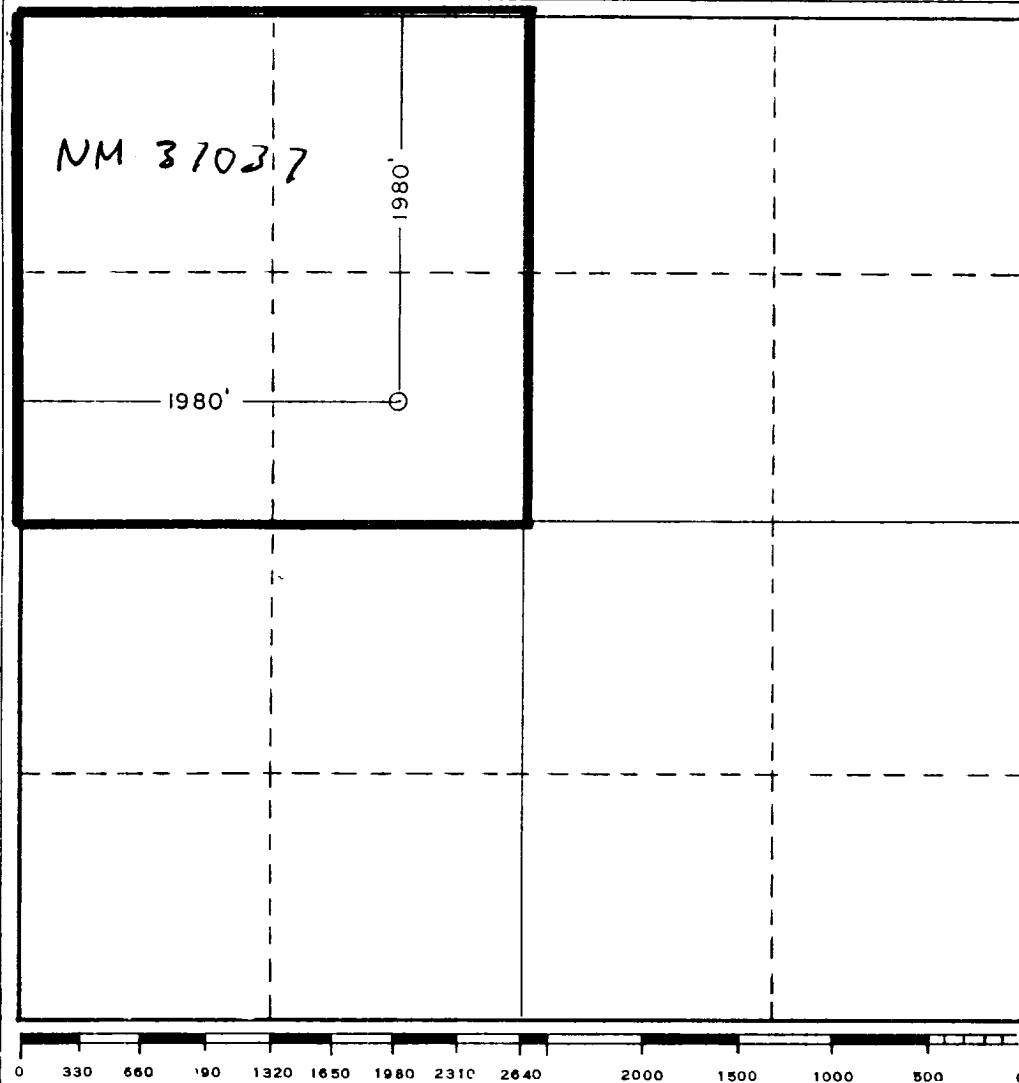
Operator YATES PETROLEUM CORPORATION			Lease Esperanza XP Federal		Well No. 3
Unit Letter F	Section 34	Township 4 South	Range 20 East	County Chaves	
Actual Footage Location of Well: 1980 feet from the North line and 1980 feet from the West line					
Ground Level Elev. 4507.1	Producing Formation Abo		Pool Wildcat	Dedicated Acreage: 160 Acres	

1. Outline the acreage dedicated to the subject well by colored pencil or hatchure marks on the plat below.
2. If more than one lease is dedicated to the well, outline each and identify the ownership thereof (both as to working interest and royalty).
3. If more than one lease of different ownership is dedicated to the well, have the interests of all owners been consolidated by communitization, unitization, force-pooling, etc?

☐ Yes ☐ No If answer is "yes," type of consolidation _____

If answer is "no," list the owners and tract descriptions which have actually been consolidated. (Use reverse side of this form if necessary.) _____

No allowable will be assigned to the well until all interests have been consolidated (by communitization, unitization, forced-pooling, or otherwise) or until a non-standard unit, eliminating such interests, has been approved by the Commission.



CERTIFICATION

I hereby certify that the information contained herein is true and complete to the best of my knowledge and belief.

Gliserio Rodriguez
Name

Gliserio Rodriguez

Position

Regulatory Agent

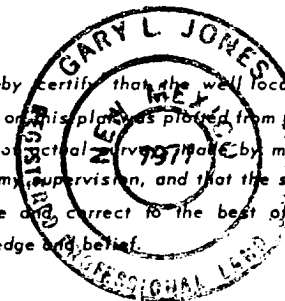
Company

Yates Petroleum Corp.

Date

6/18/84

I hereby certify that the well location shown on this plat was plotted from field notes of actual survey made by me or under my supervision, and that the same is true and correct to the best of my knowledge and belief.



Date Surveyed

April 17, 1984

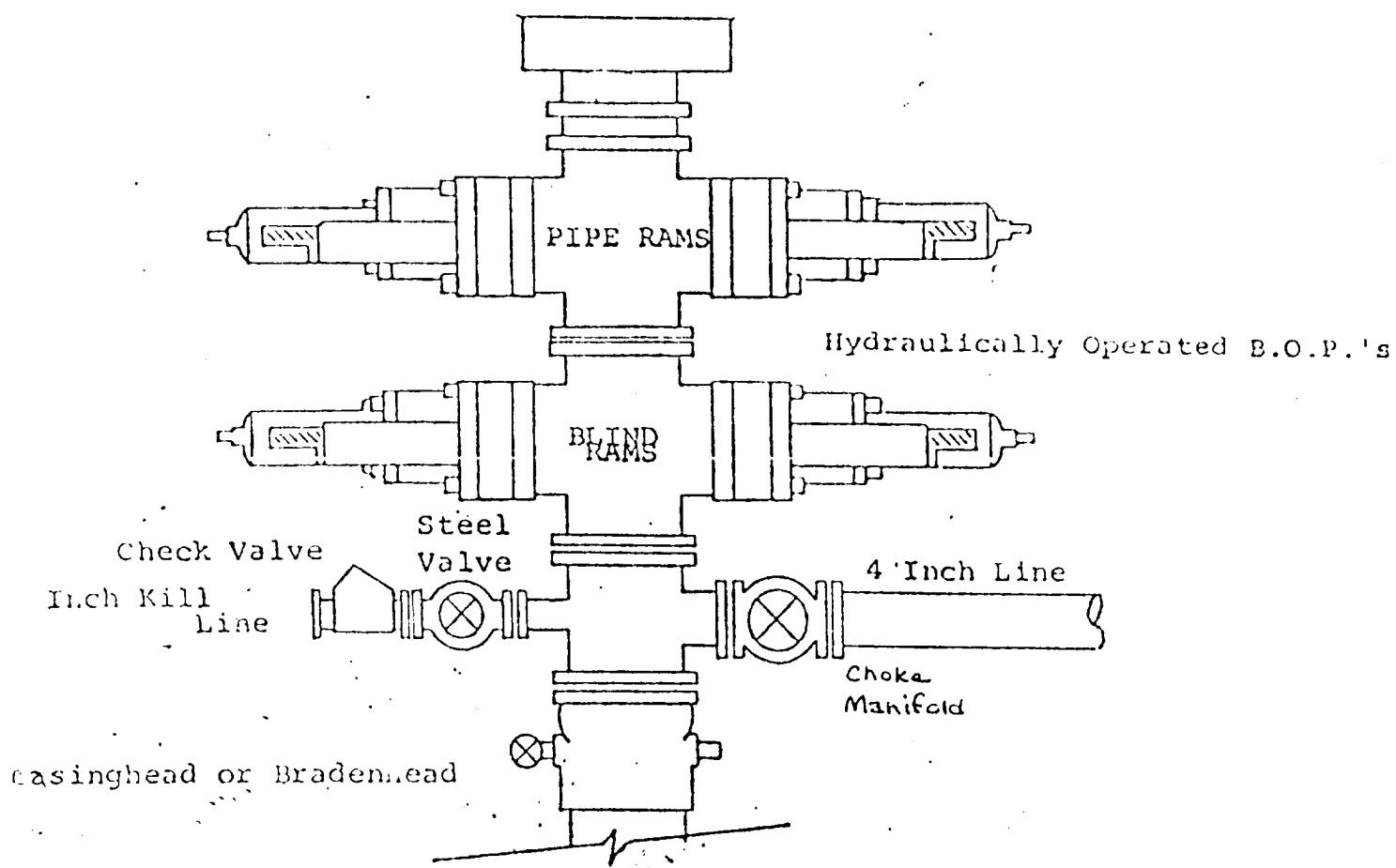
Registered Professional Engineer
and/or Land Surveyor

Gary L. Jones

Certificate No.

7977

EXHIBIT B
BDP DIAGRAM



YATES PETROLEUM CORPORATION
Esperanza "XP" Federal #3
1980' FNL and 1980' FWL
Sec. 34-T4S-R20E
Chaves County, NM

In conjunction with Form 9-331C, Application for Permit to Drill subject well, Yates Petroleum Corporation submits the following ten items of pertinent information in accordance with BLM requirements.

1. The geologic surface formation is sandy alluvium.
2. The estimated tops of geologic markers are as follows:

San Andres	surface
Yeso	325'
Abo	2067'
Pre-Cambrian	3262'
TD	4025'

3. The estimated depths at which anticipated water, oil or gas formations are expected to be encountered:

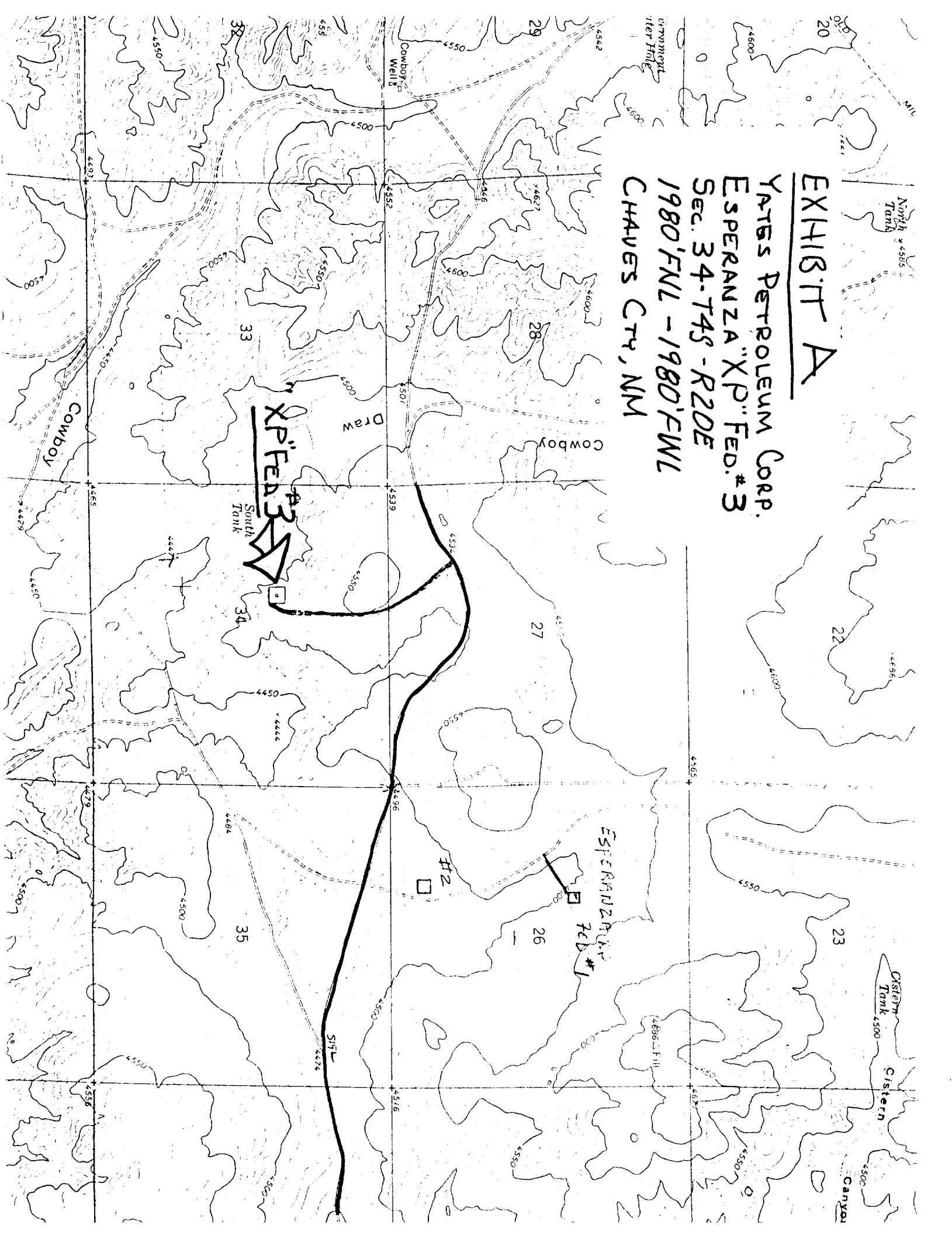
Water: 250-350'

Oil or Gas: Abo 2100'

4. Proposed Casing Program: See Form 9-331C.
5. Pressure Control Equipment: See Form 9-331C.
6. Mud Program: See Form 9-331C.
7. Auxiliary Equipment: Kelly Cock; pit level indicators and flow sensor equipment; sub with full-opening valve on floor, drill pipe connection.
8. Testing, Logging and Coring Program:

Samples: Surface casing to TD.
DST's: As warranted.
Coring: None
Logging: CNL-FDC TD to csg w/GR-CNL to surface, DLL from TD to csg.
9. No abnormal pressures or temperatures are anticipated.
10. Anticipated starting date: As soon as possible after approval.

EXHIBIT A
YATES PETROLEUM CORP.
ESPERANZA "XP" FED. #3
Sec. 34-T4S-R20E
1980'FWL - 1980'FWL
CHAVES CTY, NM



YATES PETROLEUM CORP.
Exhibit C

reserve Pit
bottom to be at
ground level to
1 ft.

