

Oil Cons.
Draper DD
Artesia

mission

SUBMIT A TRIPLICATE
(Other instructions on
reverse side)

Form approved
Budget Bureau No. 42-B1425

30-005-62415

UNITED STATES
DEPARTMENT OF THE INTERIOR
GEOLOGICAL SURVEY

APPLICATION FOR PERMIT TO DRILL, DEEPEN, OR PLUG BACK

1a. TYPE OF WORK
DRILL ☒ DEEPEN ☒ PLUG BACK ☐

b. TYPE OF WELL
OIL WELL ☐ GAS WELL ☒ OTHER ☐
SINGLE ZONE ☒ MULTIPLE ZONE ☐

2. NAME OF OPERATOR
McKay Oil Corporation

3. ADDRESS OF OPERATOR
P.O. Box 2014, Roswell, New Mexico 88202

4. LOCATION OF WELL (Report location clearly and in accordance with any State requirements)
At proposed prod. zone
437FSL-2310FEL
same

14. DISTANCE IN MILES AND DIRECTION FROM NEAREST TOWN OR POST OFFICE
28 Miles Northwest of Roswell, NM

15. DISTANCE FROM PROPOSED LOCATION TO NEAREST PROPERTY OR LEASE LINE, FT.
(Also to nearest drilg. unit line, if any)
437'

16. NO. OF ACRES IN LEASE
1800

17. NO. OF ACRES ASSIGNED TO THIS WELL
160.0

18. DISTANCE FROM PROPOSED LOCATION TO NEAREST WELL DRILLING COMPLETED, OR APPLIED FOR, ON THIS LEASE, FT.
n/a

19. PROPOSED DEPTH
3,400'

20. ROTARY OR CABLE TOOLS
Rotary

21. ELEVATIONS (Show whether DF, RT, GR, etc.)
4340GL

22. APPROX. DATE WORK WILL START
ASAP

PROPOSED CASING AND CEMENTING PROGRAM

SIZE OF HOLE	SIZE OF CASING	WEIGHT PER FOOT	SETTING DEPTH	QUANTITY OF CEMENT
12 1/4"	8 5/8"	24.0 J-55	900'	800 cf cement circulated
7 7/8"	4 1/2"	9.5 J-55	TD	1200 cf cement including 480 cf to tie in 4 1/2" to 8 5/8" from 1500' to 800'.

We propose to drill and test the Abo formation. Approximately 900' of surface casing will be set and cemented to surface. If commercial, 4 1/2" production casing will be run and cemented with adequated cover, perforated and stimulated as needed for production.

MUD PROGRAM: See Supplemental Drilling Data Which is Attached.

BOP PROGRAM: BOP will be installed on 8 5/8" casing and tested daily.

Gas is not dedicated.

Posted ID-1
NL, API
1-16-87

EXP INT 2-12-96 30-005-62415

IN ABOVE SPACE DESCRIBE PROPOSED PROGRAM: If proposal is to deepen or plug back, give data on present productive zone and proposed new productive zone. If proposal is to drill or deepen directionally, give pertinent data on subsurface locations and measured and true vertical depths. Give blowout preventer program, if any.

24. SIGNED [Signature] TITLE Landman DATE 12-24-86

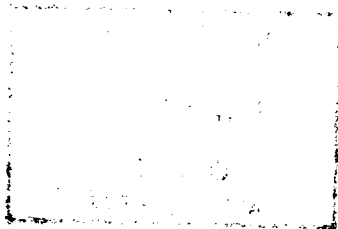
(This space for Federal or State office use)

PERMIT NO. _____ APPROVAL DATE _____

APPROVED BY S/Homer Meyer, Acting TITLE Area Manager DATE DEC 31 1986

CONDITIONS OF APPROVAL, IF ANY:

APPROVAL OF THIS APPLICATION DOES NOT WARRANT OR CERTIFY THAT THE APPLICANT HOLDS LEGAL OR EQUITABLE TITLE TO THOSE RIGHTS IN THE SUBJECT LEASE WHICH WOULD ENTITLE THE APPLICANT TO CONDUCT OPERATIONS THEREON.



214 23-200-05 19-21-2 741 921