

APPLICATION FOR PERMIT TO DRILL, DEEPEN, OR PLUG BACK

1a. TYPE OF WORK

DRILL ☐

DEEPEN ☐

PLUG BACK ☐

b. TYPE OF WELL

OIL
WELL ☒

GAS
WELL ☐

OTHER ☐

SINGLE
ZONE ☒ MULTIPLE
ZONE ☐

2. NAME OF OPERATOR

McClellan Oil Corporation

3. ADDRESS OF OPERATOR

P.O. Box 730, Roswell, N.M. 88202 O. C. D.

4. LOCATION OF WELL (Report location clearly and in accordance with any State or Federal office)

At surface

660' FNL & 1980' FEL, NW/4 NE/4, Unit letter B

At proposed prod. zone

Same

14. DISTANCE IN MILES AND DIRECTION FROM NEAREST TOWN OR POST OFFICE*

18 miles North of Loco Hills, N.M.

15. DISTANCE FROM PROPOSED*

LOCATION TO NEAREST
PROPERTY OR LEASE LINE, FT.
(Also to nearest drlg. unit line, if any)

660'

16. NO. OF ACRES IN LEASE

922.10

17. NO. OF ACRES ASSIGNED
TO THIS WELL

40

18. DISTANCE FROM PROPOSED LOCATION*
TO NEAREST WELL, DRILLING, COMPLETED,
OR APPLIED FOR, ON THIS LEASE, FT.

2640

19. PROPOSED DEPTH

2100'

20. ROTARY OR CABLE TOOLS

Rotary

21. ELEVATIONS (Show whether DF, RT, GR, etc.)

3930'

22. APPROX. DATE WORK WILL START*

June 15, 1987

23.

PROPOSED CASING AND CEMENTING PROGRAM

SIZE OF HOLE	SIZE OF CASING	WEIGHT PER FOOT	SETTING DEPTH	QUANTITY OF CEMENT
12 1/4"	8 5/8"	20.0#	410'	150 sx(Circulate)
7 7/8"	4 1/2"	10.5#	2050'	150 sx(to isolate all oil, gas and water zones)

Propose to drill to approximately 2100' to test the Queen formation. If commercial production is indicated, will run production casing and attempt completion.

IN ABOVE SPACE DESCRIBE PROPOSED PROGRAM: If proposal is to deepen or plug back, give data on present productive zone and proposed new productive zone. If proposal is to drill or deepen directionally, give pertinent data on subsurface locations and measured and true vertical depths. Give blowout-preventer program, if any.

24.

SIGNED

Jerry W. Franklin

TITLE

Agent

DATE

5/11/87

(This space for Federal or State office use)

PERMIT NO.

APPROVAL DATE

Robert Kirk

Area Manager

APPROVED BY

TITLE

DATE

CONDITIONS OF APPROVAL, IF ANY:

APPROVAL OF THIS APPLICATION DOES NOT WARRANT OR
CERTIFY THAT THE APPLICANT HOLDS LEGAL OR EQUITABLE
TITLE TO THOSE RIGHTS IN THE SUBSURFACE WHICH WILL
ENTITLE THE APPLICANT TO CONDUCT OPERATIONS THEREON.

STATE OF NEW MEXICO
ENERGY AND MINERALS DEPARTMENT

OIL CONSERVATION DIVISION
P. O. BOX 2088
SANTA FE, NEW MEXICO 875

Form C-102
Revised 10-1-78

All distances must be from the outer boundaries of the Section.

Operator McCLELLAN OIL CORP.		Lease LISA FEDERAL		Well No. 2
Unit Letter B	Section 13	Township 15 SOUTH	Range 29 EAST	County CHAVES
Actual Postage Location of Well: 1980 feet from the EAST line and 660 feet from the NORTH line				
Ground Level Elev. 3930	Producing Formation Queen		Pool Urd Sulimar Queen	Dedicated Acreage 40 Acres

1. Outline the acreage dedicated to the subject well by colored pencil or hatchure marks on the plat below.
2. If more than one lease is dedicated to the well, outline each and identify the ownership thereof (both as to working interest and royalty).
3. If more than one lease of different ownership is dedicated to the well, have the interests of all owners been consolidated by communitization, unitization, force-pooling, etc?

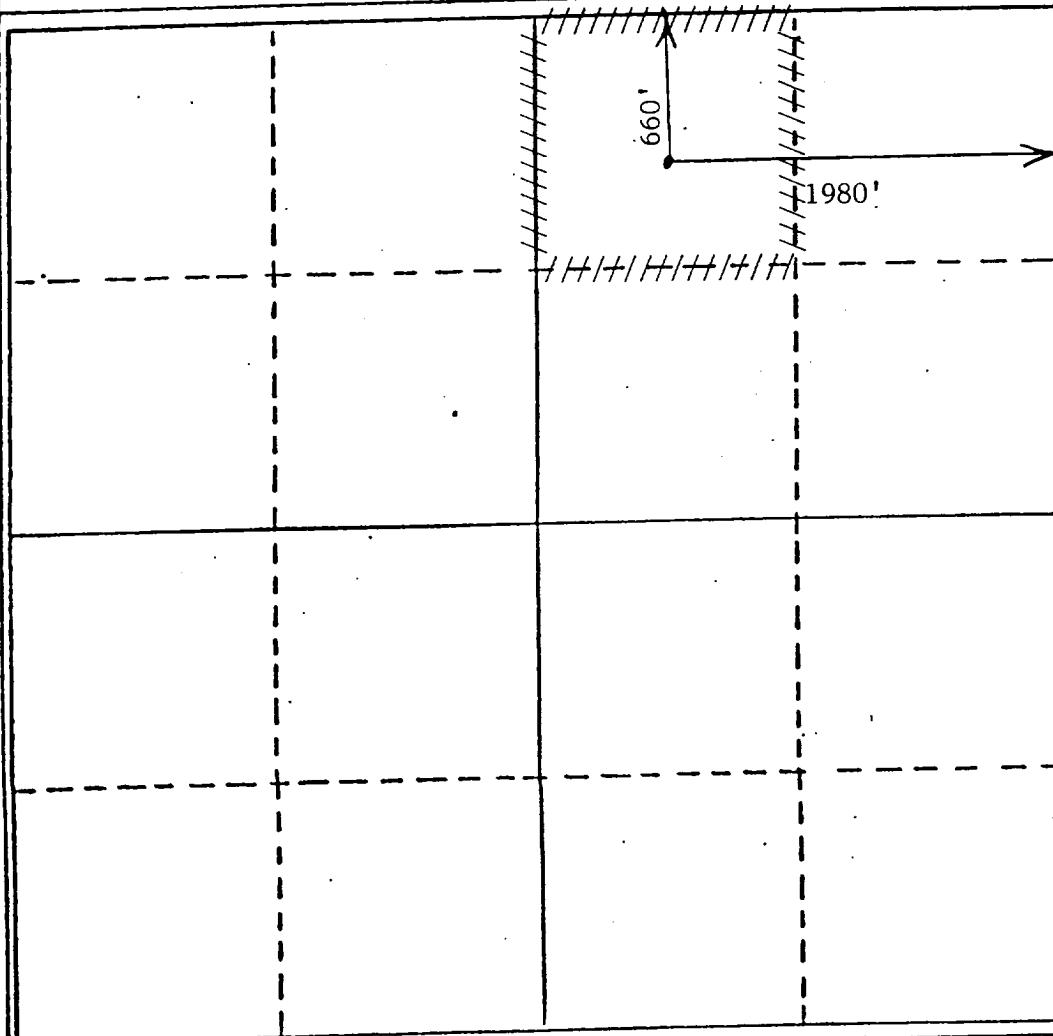
☐ Yes ☐ No If answer is "yes," type of consolidation

If answer is "no," list the owners and tract descriptions which have actually been consolidated. (Use reverse side of this form if necessary.)

No allowable will be assigned to the well until all interests have been consolidated (by communitization, unitization, forced-pooling, or otherwise) or until a non-standard unit, eliminating such interests, has been approved by the Division.

RECEIVED
JUN 18 1987
O. C. D.
ARTESIA, OFFICE

MAY 26 1987



CERTIFICATION

I hereby certify that the information contained herein is true and complete to the best of my knowledge and belief.

Terry W. Franklin

Name

Terry W. Franklin

Position

Agent

Company

McClellan Oil Corporation

Date

5/14/87

I hereby certify that the well location shown on this plat was plotted from field notes of actual surveys made by me or under my supervision, and that the same is true and correct to the best of my knowledge and belief.

JOHN D. JAQUES

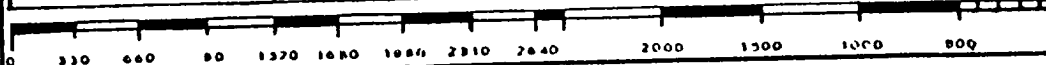
Date Surveyed

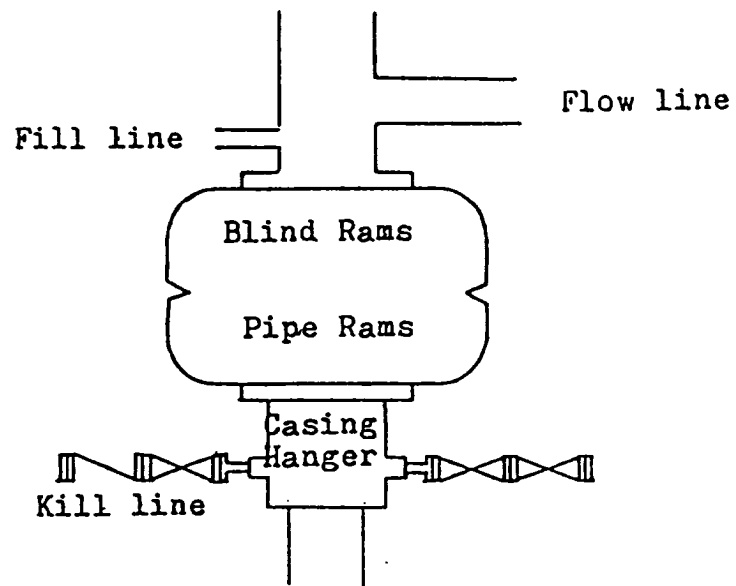
FEBRUARY 23, 1987

Registered Professional Engineer and/or Land Surveyor

JOHN D. JAQUES, P.E. & L.S.

Certificate No. 8290





Blowout Preventer
3000 psi working pressure

SUPPLEMENTAL DRILLING DATA
McClellan Oil Corporation
Lisa Federal No. 2
660' FNL & 1980' FEL
Sec. 13, T15S, R29E
Chaves County, N.M.

NM - 31257



1. Geologic Name of Surface Formation: Recent

2. Estimated Geological Marker Tops:

Rustler	394'	7 Rivers	1782'
Salt	426'	Queen	1980'
Yates	1252'		

3. Estimated Depths to Oil, Gas or Water:

Oil possible from 2000' to 2100'.

4. Proposed Casing and Cement Programs:

0 - 410' - Set approximately 410' of 8 5/8", 20.0#, J-55, ST&C casing, and cement to surface with 150SX Class 'C' cement.

0 - 2100' - Set to total depth 4 1/2", 10.5#, J-55 ST&C Casing, and cement to isolate all oil, gas and water zones.

5. Proposed Mud Program:

0 - 410' - Native
410 - 2100' - Drill with air mist to T.D.

6. Testing, Logging and Coring Programs:

Testing: None
Logging: CNL-LDT, gamma ray, DLL
Coring: None

7. Auxiliary Equipment:

A kelly cock will be installed on the rig floor while drilling operations are in progress.

8. Pressure Control Equipment:

Standard rotating head and B.O.P. for drilling with air.

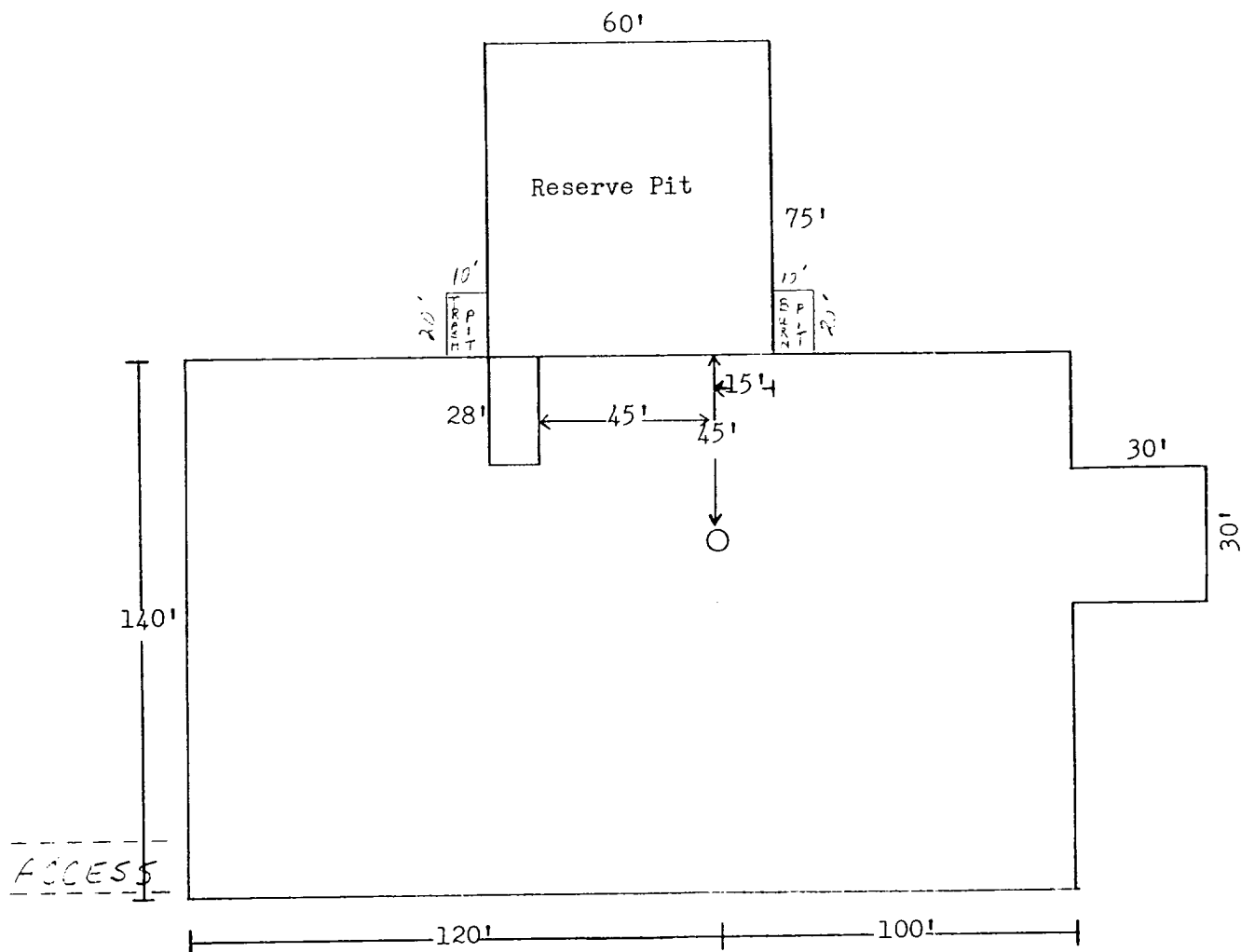


EXHIBIT 'D'
McClellan Oil Corporation
Lisa Federal No. 2
NW/4 NE/4, Sec. 13-15S-29E
Chaves County, N.M.