

STATE OF NEW MEXICO  
ENERGY AND MINERALS DEPARTMENT

OIL CONSERVATION DIVISION

P. O. BOX 2088

SANTA FE, NEW MEXICO 87501

RECEIVED SEP - 8 1987  
Form C-102  
Revised 10-1-78

All distances must be from the outer boundaries of the Section.

Operator McKay Oil Corp.			Lease Ruby Federal		Well No. #3
Unit Letter N	Section 33	Township 6 South	Range 22 East	County Chaves	

Actual Footage Location of Well:

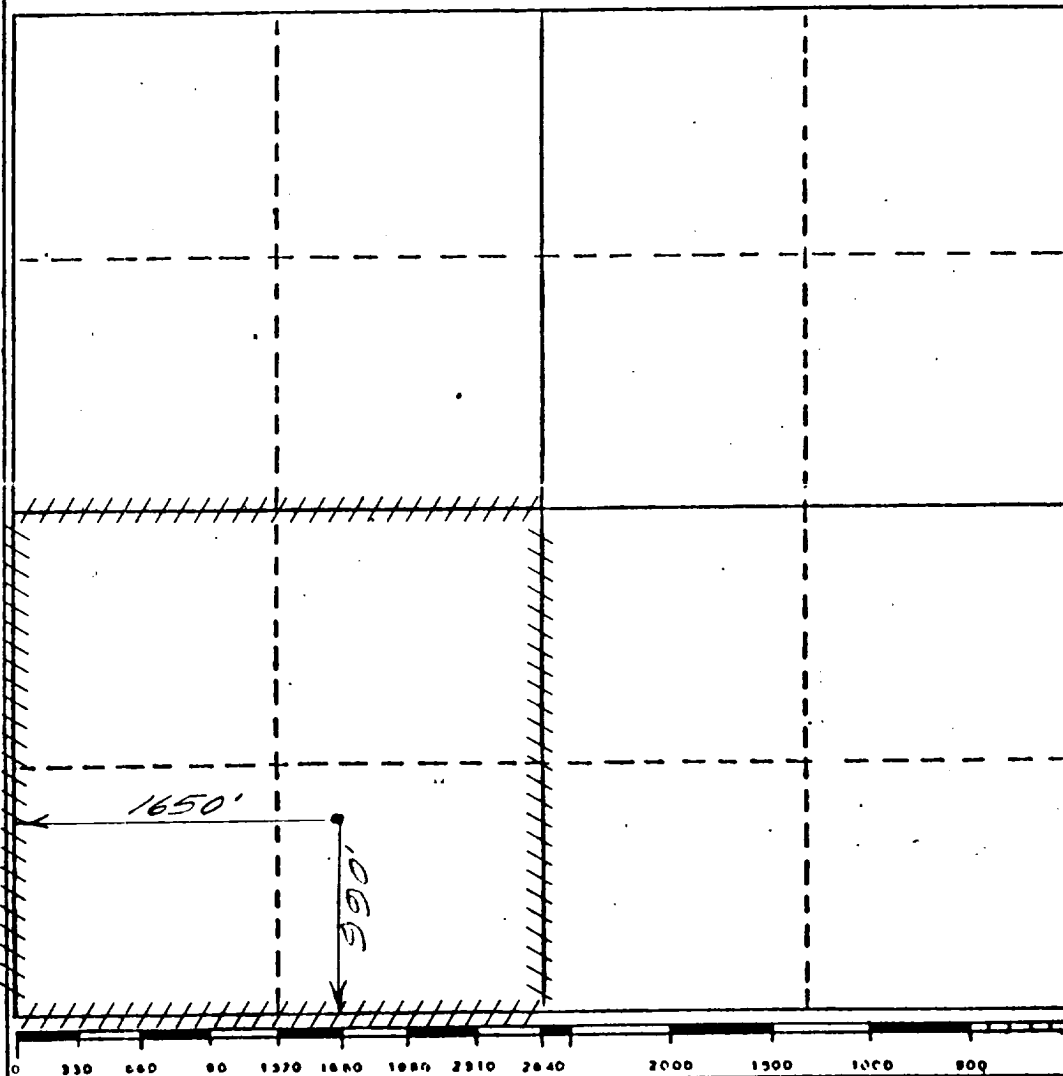
990 feet from the South line and	1650 feet from the West line
Ground Level Elev. 4385	Producing Formation Abo
Pool W. Pecos Slope-Abo	Dedicated Acreage 160 Acres

1. Outline the acreage dedicated to the subject well by colored pencil or hatchure marks on the plat below.
2. If more than one lease is dedicated to the well, outline each and identify the ownership thereof (both as to working interest and royalty).
3. If more than one lease of different ownership is dedicated to the well, have the interests of all owners been consolidated by communitization, unitization, force-pooling, etc?

☐ Yes ☐ No If answer is "yes," type of consolidation \_\_\_\_\_

If answer is "no," list the owners and tract descriptions which have actually been consolidated. (Use reverse side of this form if necessary.) \_\_\_\_\_

No allowable will be assigned to the well until all interests have been consolidated (by communitization, unitization, forced-pooling, or otherwise) or until a non-standard unit, eliminating such interests, has been approved by the Division.



CERTIFICATION

I hereby certify that the information contained herein is true and complete to the best of my knowledge and belief.

*Terry W. Franklin*

Name  
Terry W. Franklin

Position  
Agent

Company  
McKay Oil Corporation

Date  
September 14, 1987.

I hereby certify that the well location shown on this plat was plotted from field notes of actual surveys made by me or under my supervision, and that the same is true and correct to the best of my knowledge and belief.

*John D. Jaquess*  
Date Surveyed  
February 17, 1987  
Registered Professional Engineer and/or Land Surveyor  
John D. Jaquess, P.E. & L.S.  
Certificate No. 6290