

UNITED STATES  
DEPARTMENT OF THE INTERIOR  
BUREAU OF LAND MANAGEMENT

APPLICATION FOR PERMIT TO DRILL, DEEPEN, OR PLUG BACK

1a. TYPE OF WORK

DRILL ☒

RECEIVED  
DEEPEN ☐

PLUG BACK ☐

b. TYPE OF WELL

OIL  
WELL ☐

GAS  
WELL ☒

OTHER

SINGLE  
ZONE ☒

MULTIPLE  
ZONE ☐

2. NAME OF OPERATOR

McKay Oil Corporation

3. ADDRESS OF OPERATOR

P.O. Box 2014, Roswell, New Mexico 88202-2014

4. LOCATION OF WELL (Report location clearly and in accordance with any State requirements.)\*

At surface

2480' FSL & 360' FEL, NE/4 SE/4, Unit letter I

At proposed prod. zone

Same

14. DISTANCE IN MILES AND DIRECTION FROM NEAREST TOWN OR POST OFFICE\*

35 air miles north of Roswell, New Mexico

15. DISTANCE FROM PROPOSED\*

LOCATION TO NEAREST  
PROPERTY OR LEASE LINE, FT.  
(Also to nearest drlg. unit line, if any)

660'

16. NO. OF ACRES IN LEASE

1,275.70

18. DISTANCE FROM PROPOSED LOCATION\*

TO NEAREST WELL, DRILLING, COMPLETED,  
OR APPLIED FOR, ON THIS LEASE, FT.

N/A

19. PROPOSED DEPTH

4,600'

17. NO. OF ACRES ASSIGNED  
TO THIS WELL

160

20. ROTARY OR CABLE TOOLS

Rotary

21. ELEVATIONS (Show whether DF, RT, GR, etc.)

4371/4350' GR

22. APPROX. DATE WORK WILL START\*

ASAP

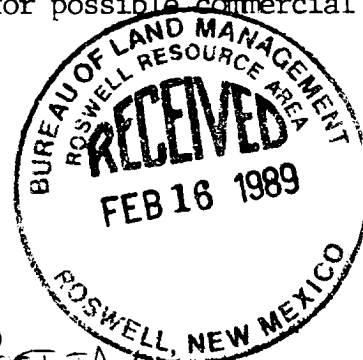
23. PROPOSED CASING AND CEMENTING PROGRAM

SIZE OF HOLE	SIZE OF CASING	WEIGHT PER FOOT	SETTING DEPTH	QUANTITY OF CEMENT
12 1/4"	8 5/8"	24.0#	900'±	450 sx(Circulate)
7 7/8"	4 1/2"	10.5#	T.D.	Cement to isolate all oil, gas and water zones

Operator proposes to drill to the PreCambrian formation to test for possible commercial production of gas.

B.O.P. sketch is attached.

Gas is dedicated.



IN ABOVE SPACE DESCRIBE PROPOSED PROGRAM: If proposal is to deepen or plug back, give data on present productive zone and proposed new productive zone. If proposal is to drill or deepen directionally, give pertinent data on subsurface locations and measured and true vertical depths. Give blowout preventer program, if any.

24.

SIGNED

*Jerry W. Franklin*

TITLE

Agent

DATE

2-16-89

(This space for Federal or State office use)

PERMIT NO.

APPROVAL DATE

APPROVED BY

S/Homer Meyer, Acting

TITLE

Area Manager

DATE

MAR 22 1989

CONDITIONS OF APPROVAL, IF ANY:

PLEASE BE ADVISED THAT THERE WILL BE NO EXCAVATION OF FEDERALLY OWNED MINERAL MATERIAL FOR CONSTRUCTION OF THE ACCESS ROAD OR PAD WITHOUT PAYMENT IN ADVANCE.

APPROVAL OF THIS APPLICATION DOES NOT WARRANT OR CERTIFY THAT THE APPLICANT HOLDS LEGAL OR EQUITABLE TITLE TO THOSE RIGHTS IN THE SUBJECT LEASE WHICH WOULD ENTITLE THE APPLICANT TO CONDUCT OPERATIONS THEREON.

18 U.S.C. Section 1001, makes it a crime for any person knowingly and willfully to make to any department or agency of the United States any false, fictitious or fraudulent statements or representations as to any matter within its jurisdiction.

## OIL CONSERVATION DIVISION

STATE OF NEW MEXICO  
ENERGY AND MINERALS DEPARTMENTP. O. BOX 2088  
SANTA FE, NEW MEXICO 87501Form C-102  
Revised 10-1-70

All distances must be from the outer boundaries of the Section.

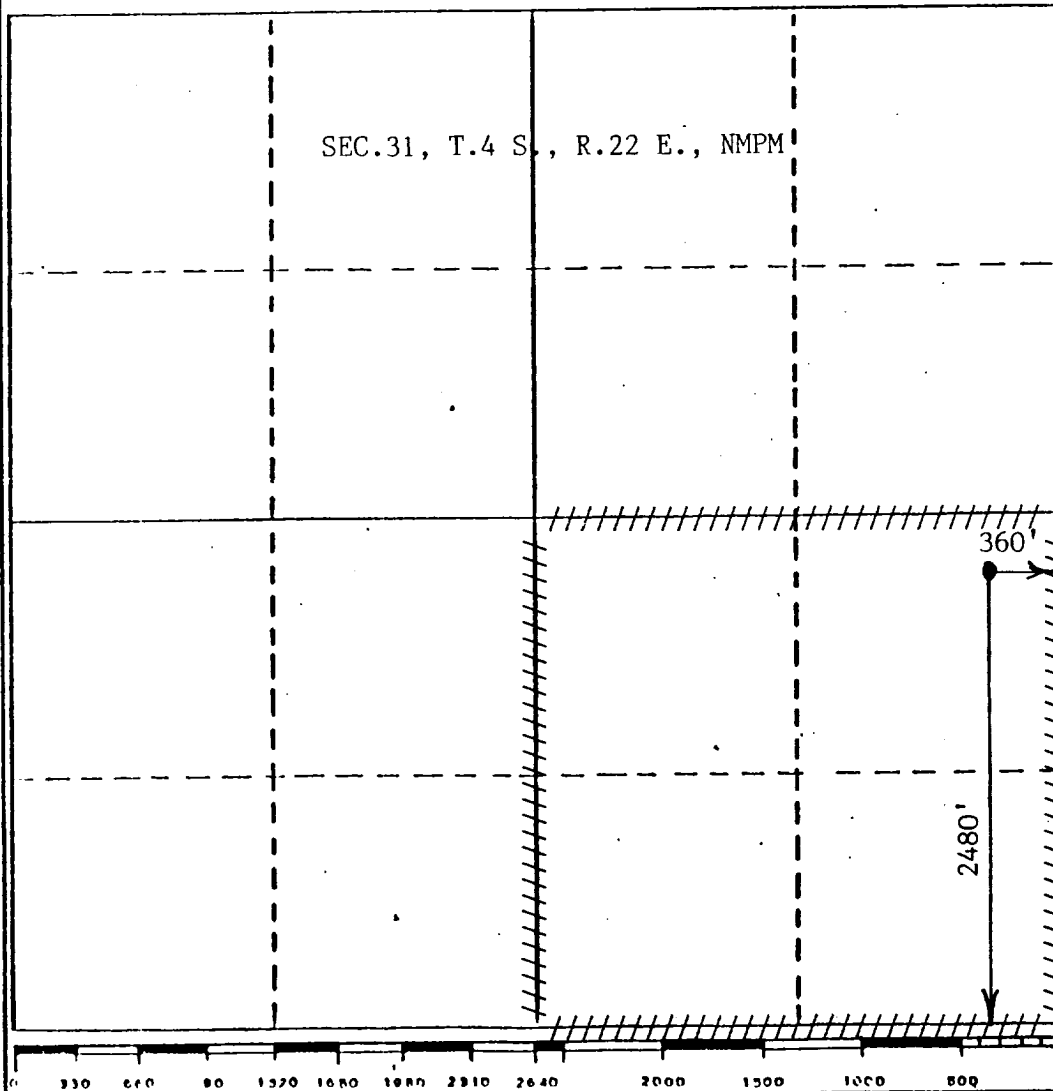
Operator McKAY OIL CORP.		Lease WESTFORK FEDERAL UNIT		Well No. #4
Unit Letter I	Section 31	Township 4 SOUTH	Range 22 EAST	County CHAVES
Actual Footage Location of Well: 2480 feet from the SOUTH line and 360 feet from the EAST line				
Ground Level Elev. 4371	Producing Formation PreCambrian	Pool Wildcat PRE-PERMANENT	Dedicated Acreage: 160 Acres	

1. Outline the acreage dedicated to the subject well by colored pencil or hatchure marks on the plat below.
2. If more than one lease is dedicated to the well, outline each and identify the ownership thereof (both as to working interest and royalty).
3. If more than one lease of different ownership is dedicated to the well, have the interests of all owners been consolidated by communitization, unitization, force-pooling, etc?

☐ Yes ☐ No If answer is "yes," type of consolidation \_\_\_\_\_

If answer is "no," list the owners and tract descriptions which have actually been consolidated. (Use reverse side of this form if necessary.) \_\_\_\_\_

No allowable will be assigned to the well until all interests have been consolidated (by communitization, unitization, forced-pooling, or otherwise) or until a non-standard unit, eliminating such interests, has been approved by the Division.



## CERTIFICATION

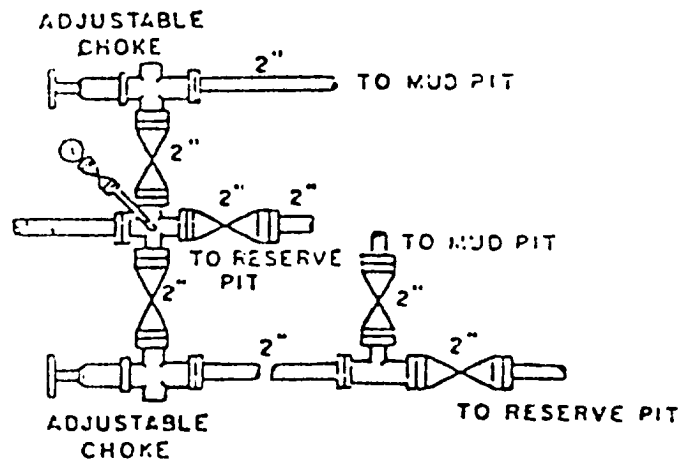
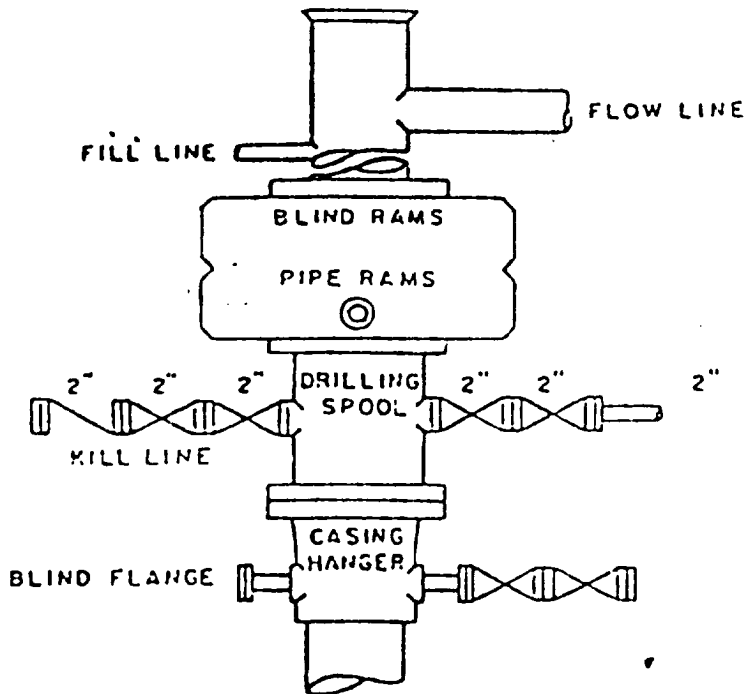
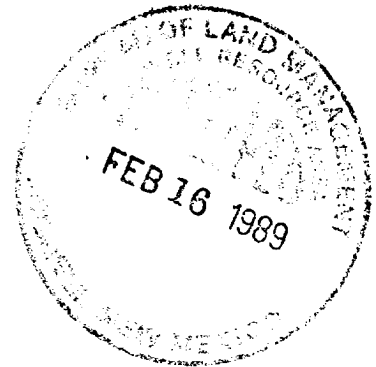
I hereby certify that the information contained herein is true and complete to the best of my knowledge and belief.

Name  
Terry W. Franklin  
Position  
Agent  
Company  
McKay Oil Corporation  
Date  
3/09/89

I hereby certify that the well location shown on this plat was plotted from field notes of actual surveys made by me or under my supervision, and that the same is true and correct to the best of my knowledge and belief.

JOHN D. JAQUES  
Date Surveyed  
FEBRUARY 18, 1989  
Registered Professional Engineer  
and/or Land Surveyor  
John D. Jaques, P.E. & L.S.  
Certificate No. 6290

Exhibit 'D'  
McKay Oil Corporation  
West Fork Unit No. 4  
NE/4SE/4, Sec. 31, T4S, R22E  
Chaves County, N.M.



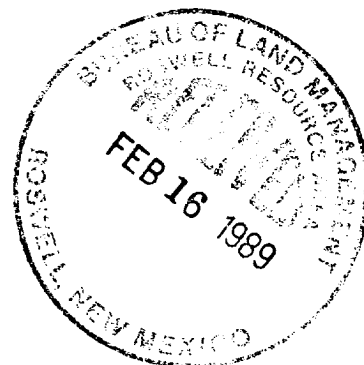
**BOP DIAGRAM**

**3000# Working Pressure  
Rams Operated Daily**

SUPPLEMENTAL DRILLING DATA

MCKAY OIL CORPORATION  
West Fork Unit No. 4  
NE/4 SE/4, Sec. 31, T4S, R22E  
Chaves County, New Mexico

NM-32335



The following is in accordance with "Onshore Oil & Gas Order" No. 1:

1. SURFACE FORMATION: San Andres
2. ESTIMATED TOPS OF GEOLOGIC MARKERS:

Yeso	575'	Lower Abo	3700'
Tubb	2136'	Penn	4120'
Abo	3000'	PreCambrian	4490'
3. ESTIMATED DEPTHS TO WATER, OIL OR GAS:

Fresh water	- In surface formations above 600'.
Gas	- In Abo formation below 3000'
4. PROPOSED CASING AND CEMENT PROGRAMS: See form 3160-3.
5. PRESSURE CONTROL EQUIPMENT: Blowout preventer stack will consist of at lease a double-ram type blowout preventer rated to 3000 psi working pressure. A sketch is attached.
6. CIRCULATING MEDIUM:

0	- 900'	Lime and gel, spud mud, viscosity 32-34.
900	- 2900'	Fresh water.
2900	- T.D.	Start mudding up at 2900'; viscosity 36-38; water loss 10cc or less; 3-5% Diesel; 2% KCL.
7. AUXILIARY EQUIPMENT: Full opening drill string safety valve with drill string in use, will be kept on rig floor at all times.
8. TESTING, LOGGING AND CORING PROGRAMS:

Samples:	Surface to T.D.
Logging:	GR-CNL, DLL-MSFL from surface to T.D.
Coring :	None anticipated.
9. ABNORMAL PRESSURES OR TEMPERATURE ZONES: None anticipated.
10. ANTICIPATED STARTING DATE: March 15, 1989. Completion operations to follow.



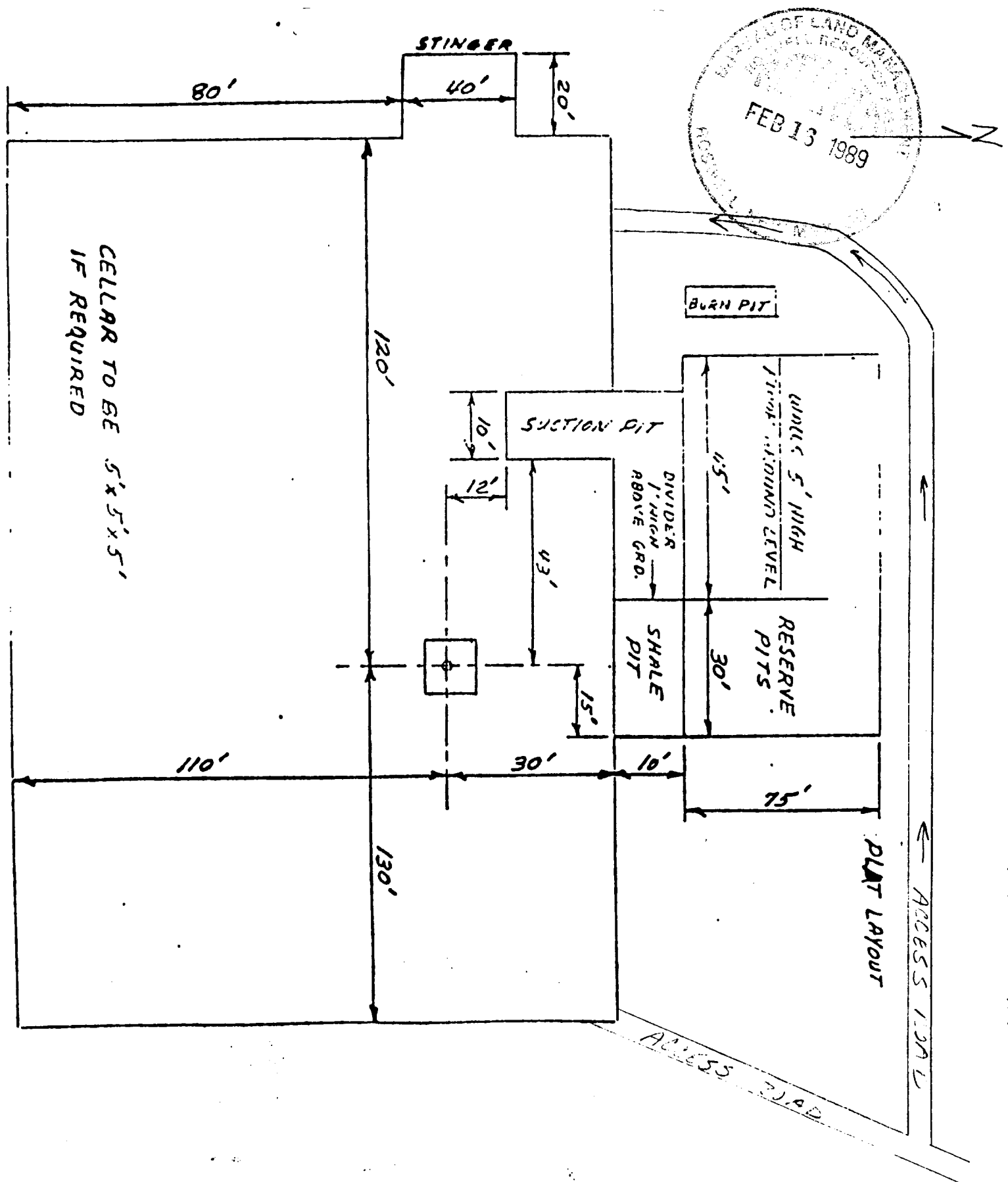


Exhibit 'C'  
 McKay Oil Corporation  
 West Fork Unit No. 4  
 NE/4SE/4, Sec. 31, T4S, R22E  
 Chaves County, N.M.