

District I
PO Box 1980, Hobbs, NM 88241-1980
District II
PO Drawer DD, Artesia, NM 88211-0719
District III
1000 Rio Brazos Rd., Aztec, NM 87410
District IV
PO Box 2088, Santa Fe, NM 87504-2088

State of New Mexico
Energy, Minerals & Natural Resources Department

OIL CONSERVATION DIVISION
PO Box 2088
Santa Fe, NM 87504-2088

Form C-101
Revised February 10, 1994
Instructions on back
Submit to Appropriate District Office
State Lease - 6 Copies
Fee Lease - 5 Copies

☐ AMENDED REPORT

APPLICATION FOR PERMIT TO DRILL, RE-ENTER, DEEPEN, PLUGBACK, OR ADD A ZONE

Operator Name and Address McKay Oil Corporation P.O. Box 2014 Roswell, NM 88201		OGRID Number 014424
Property Name McKay -Samedan B		API Number 30-005-63083
Property Code 18424	Well No. 2	

Surface Location

UL or lot no.	Section	Township	Range	Lot Ida	Feet from the	North/South line	Feet from the	East/West line	County
N	16	7S	26E		660	South	2310	West	Chaves

Proposed Bottom Hole Location If Different From Surface

UL or lot no.	Section	Township	Range	Lot Ida	Feet from the	North/South line	Feet from the	East/West line	County
Proposed Pool 1 Pecos Slope Abo					Proposed Pool 2 8273C				

Work Type Code N	Well Type Code G	Cable/Rotary Rotary	Lease Type Code S	Gross Level Elevation 3668
Multiple No	Proposed Depth 4400'	Formation Abo	Contractor United Drilling	Spud Date 2-1-96

Proposed Casing and Cement Program

Hole Size	Casing Size	Casing weight/foot	Setting Depth	Sacks of Cement	Estimated TOC
12 1/4"	8 5/8"	24 J-55	900+	850+	surface
7 7/8"	4 1/2"	10.5 J-55	TD	470+	2500'

Post ID-1
2-16-96

New Line & API

Describe the proposed program. If this application is to DEEPEN or PLUG BACK give the data on the present productive zone and proposed new productive zone. Describe the blowout prevention program, if any. Use additional sheets if necessary.

Propose to drill to approximately 4400' to test the Abo and intermediate formations. Drill 12 1/4" hole to about 900' and circulate cement behind 8 5/8" casing. Install 10" API 3000# double ram BOP and drill 7 7/8" hole to total depth.

Cement 4 1/2" production casing with approximately 470 sacks of cement, using pump and plug method, to isolate all oil, gas and water zones. Selectively perforate and stimulate favorable zones.

The gas is not dedicated.

I hereby certify that the information given above is true and complete to the best of my knowledge and belief.

Signature:

Bill J. Milstead

Printed name:

Bill J. Milstead

Title:

Land Manager

Date:

2-9-96

Phone:

(505) 623-4735

OIL CONSERVATION DIVISION

Approved by:

ORIGINAL SIGNED BY TIM W. GUM

Title:

DISTRICT II SUPERVISOR

Approval Date:

2-12-96

Expiration Date:

8-12-96

Conditions of Approval:

Attached ☐

Modify N.M.O.C.C. in sufficient time to witness cementing

the 8 5/8" casing

OIL CONSERVATION DIVISION

P.O. Box 2088

Santa Fe, New Mexico 87504-2088

DISTRICT I
P.O. Box 1980, Hobbs, NM 88240

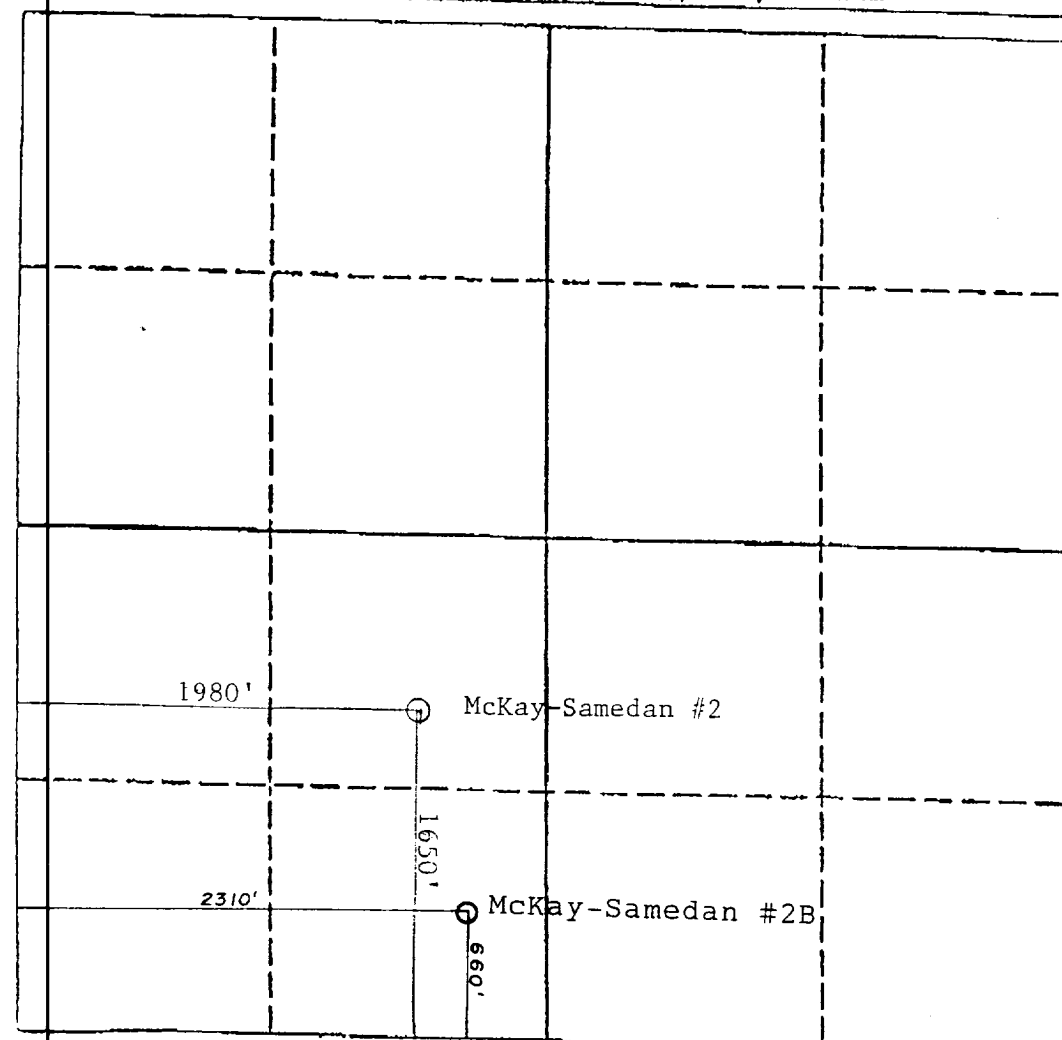
DISTRICT II
P.O. Drawer DD, Artesia, NM 88210

DISTRICT III
1000 Rio Brazos Rd., Aztec, NM 87410

WELL LOCATION AND ACREAGE DEDICATION PLAT

All Distances must be from the outer boundaries of the section

Operator McKAY OIL Sanders Petroleum Corporation		Lease McKay-Samedan B		Well No. 2
Unit Letter N	Section 16	Township 7 South	Range 26 East	County Chaves
Actual Footage Location of Well: 2310 feet from the West line and 660 feet from the South line				
Ground level Elev. 8668	Producing Formation	Pool Peccos Slope Abo 6AS	Dedicated Acreage: 160 Acres	
<p>1. Outline the acreage dedicated to the subject well by colored pencil or hatchure marks on the plat below.</p> <p>2. If more than one lease is dedicated to the well, outline each and identify the ownership thereof (both as to working interest and royalty).</p> <p>3. If more than one lease of different ownership is dedicated to the well, have the interest of all owners been consolidated by communitization, unitization, force-pooling, etc? <input type="checkbox"/> Yes <input type="checkbox"/> No If answer is "yes" type of consolidation _____ If answer is "no" list the owners and tract descriptions which have actually been consolidated. (Use reverse side of this form if necessary.) _____ No allowable will be assigned to the well until all interests have been consolidated (by communitization, unitization, force-pooling, or otherwise) or until a non-standard unit, eliminating such interest, has been approved by the Division.</p>				



OPERATOR CERTIFICATION	
I hereby certify that the information contained herein is true and complete to the best of my knowledge and belief.	
Signature	Bill J. Milstead
Printed Name	Bill J. Milstead
Position	Land Manager
Company	Sanders Petroleum Corp

Date
1-17-96

SURVEYOR CERTIFICATION	
I hereby certify that the well location shown on this plat was plotted from field notes of actual surveys made by me or under my supervision, and that the same is true and correct to the best of my knowledge and belief.	

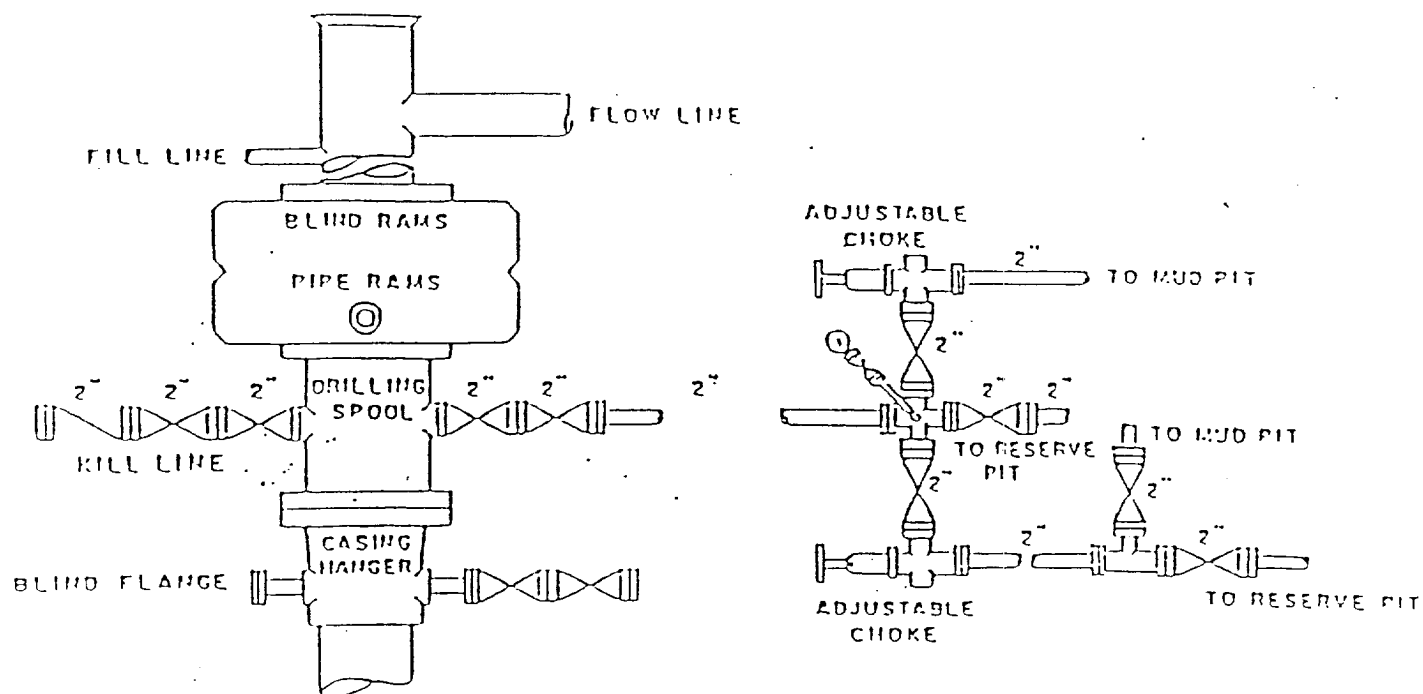
Date Surveyed
January

Signature & Seal
Professional Surveyor



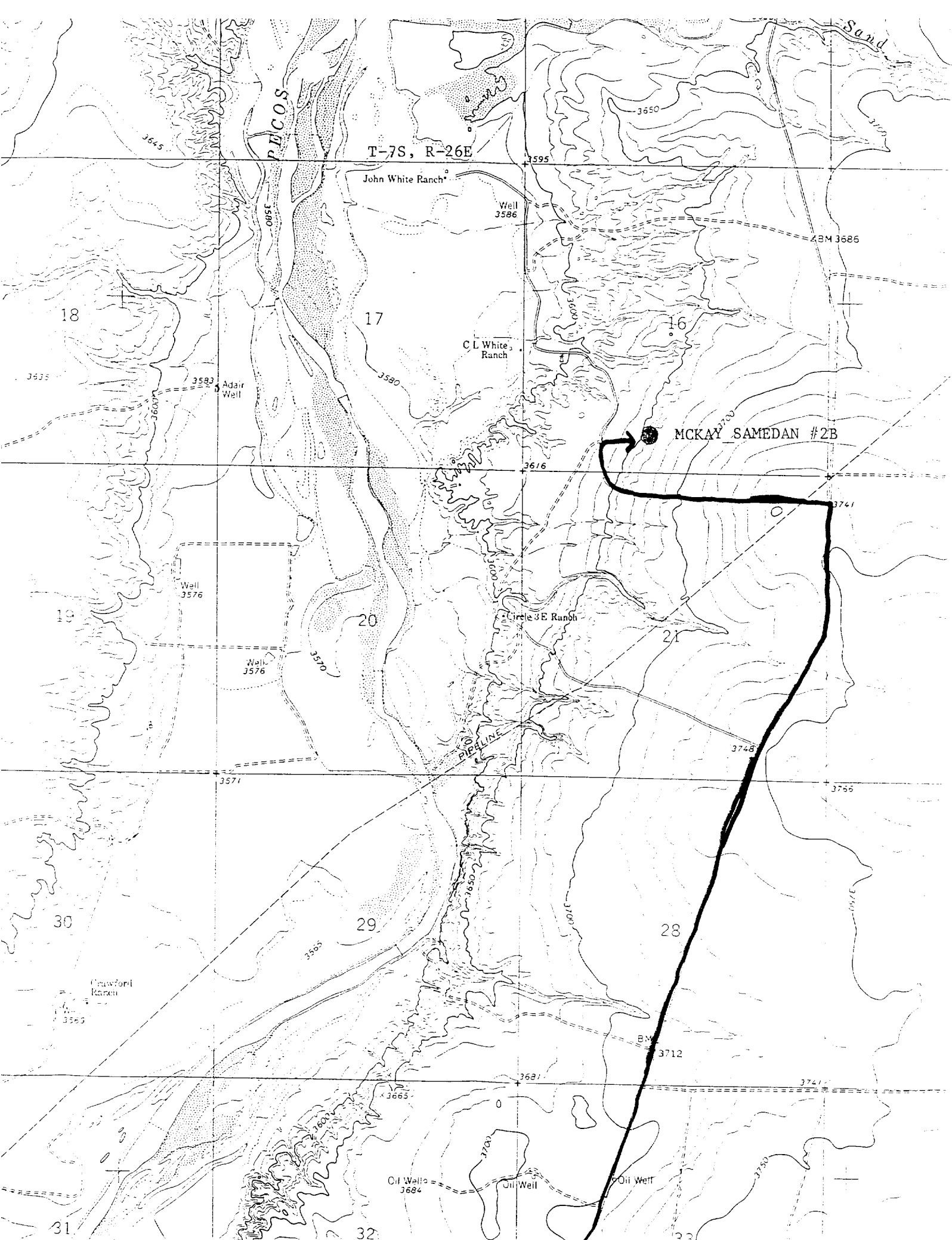
Certificate No.
LS 8504

ANDERS PETROLEUM CORPORATION
 McKay-Samedan #2B
 Section 16, T-7S, R-26E
 Chaves County, New Mexico



BOP DIAGRAM

3000# Working Pressure
 Rams Operated Daily



District I
PO Box 1980, Hobbs, NM 88241-1980
District II
PO Drawer DD, Artesia, NM 88211-0719
District III
1000 Rio Brazos Rd., Aztec, NM 87410
District IV
PO Box 2088, Santa Fe, NM 87504-2088

State of New Mexico
Energy, Minerals & Natural Resources Department

OIL CONSERVATION DIVISION
PO Box 2088
Santa Fe, NM 87504-2088

Form C-101
Revised February 10, 1994
Instructions on back
Submit to Appropriate District Office
State Lease - 6 Copies
Fee Lease - 5 Copies

☐ AMENDED REPORT

APPLICATION FOR PERMIT TO DRILL, RE-ENTER, DEEPEN, PLUGBACK, OR ADD A ZONE

Operator Name and Address: Sanders Petroleum Corporation P.O. Box 2918 Roswell, New Mexico 88202		RECEIVED FEB 10 1996	OGRID Number 020255
Property Code 18411	Property Name McKay-Samedan B	API Number 30-005-63083	
		Well No. 2B	

7 Surface Location									
UL or lot no.	Section	Township	Range	Lot Ida	Feet from the	North/South line	Feet from the	East/West line	County
N	16	7S	26E		660	South	2310	West	Chaves

8 Proposed Bottom Hole Location If Different From Surface									
UL or lot no.	Section	Township	Range	Lot Ida	Feet from the	North/South line	Feet from the	East/West line	County
Proposed Pool 1 Pecos Slope Abo (GAS) 82730					Proposed Pool 2				

Work Type Code N	Well Type Code G	Casing Rotary Rotary	Well Type Code	Ground Level Elevation 3668
Multiple No	Proposed Depth 4,400'	Formation Abo	Contractor United Drilling	Spud Date 2-1-96

21 Proposed Casing and Cement Program					
Hole Size	Casing Size	Casing weight/foot	Setting Depth	Sacks of Cement	Estimated TOC
12-1/4"	8-5/8"	24 N-55	900+	850+	surface
7-7/8"	4-1/2"	10.5 J-55	TD	470+	2,500'

Describe the proposed program. If this application is to DEEPEN or PLUG BACK give the data on the present productive zone and proposed new productive zone. Describe the blowout prevention program, if any. Use additional sheets if necessary.

Propose to drill to approximately 4,400' to test the Abo and intermediate formations. Drill 12-1/4" hole to about 900' and circulate cement behind 8-5/8" casing. Install 10" API 3000# double ram BOP and drill 7-7/8" hole to total depth.

Cement 4-1/2" production casing with approximately 470 sacks of cement, using pump and plug mentod, to isolate all oil, gas and water zones. Selectively perforate and stimulate favorable zones.

The gas is not dedicated.

Posted 2-1-96
2-9-96
N.M.O.C.C.

I hereby certify that the information given above is true and complete to the best of my knowledge and belief. Signature: <i>Billy J. Milstead</i>		OIL CONSERVATION DIVISION	
Printed name: <i>Billy J. Milstead</i>		Approved by: ORIGINAL SIGNED BY TIM W. GUM	
Title: <i>Land Manager</i>		Title: DISTRICT II SUPERVISOR	
Date: <i>1-17-96</i>		Approval Date: <i>2-7-96</i>	Expiration Date: <i>8-7-96</i>
Phone: (505) 623-4735		Conditions of Approval: Attached <input type="checkbox"/> Copy N.M.O.C.C. in sufficient time to witness cementing the 8 5/8" casing	