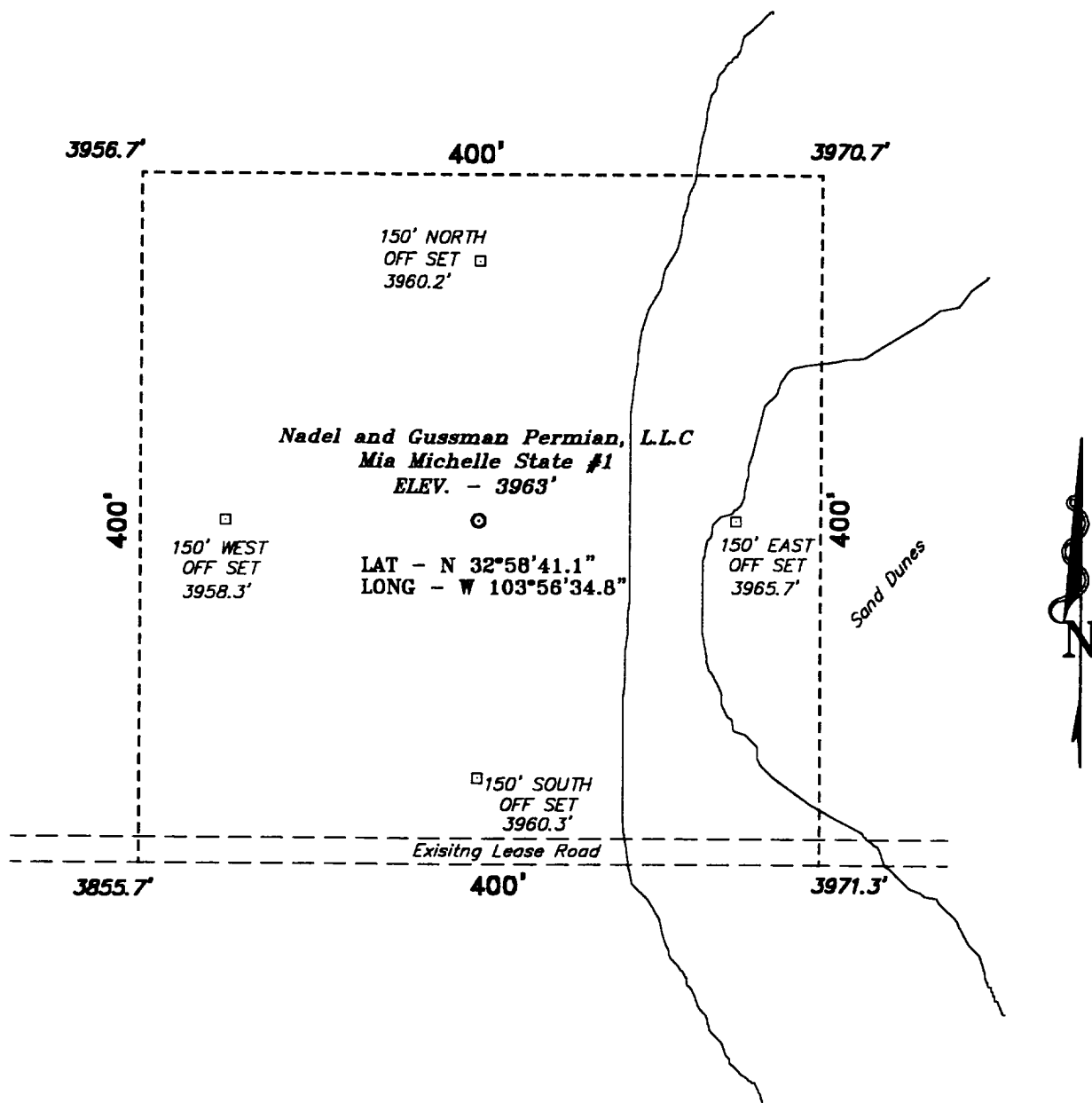
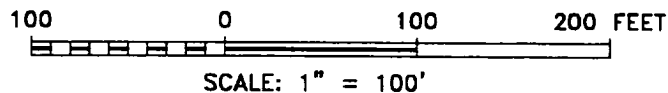


SECTION 32, TOWNSHIP 15 SOUTH, RANGE 30 EAST, N.M.P.M.,
CHAVES COUNTY, NEW MEXICO.



DIRECTIONS TO WELL LOCATION

FROM THE JUNCTION OF US HWY 82 AND CO. RD. 217 IN LOCO HILLS, GO NORTH ON CO. RD. 217 APPROX. 13 MILES TO HWY 31; THENCE WEST ON HWY 31 APPROX. 9 MILES TO A LEASE ROAD; THENCE SOUTH ON LEASE ROAD APPROX. 4 MILES; THENCE EAST APPROX. 1500 FEET TO A POINT ON THE SOUTH EDGE OF THE PROPOSED WELL LOCATION.



NADEL AND GUSSMAN PERMIAN, L.L.C.

REF: Mia Michelle State No. 1 / Well Pad Topo

THE MIA MICHELLE STATE No. 1 LOCATED 572' FROM THE NORTH LINE AND 1189' FROM THE EAST LINE OF SECTION 32, TOWNSHIP 15 SOUTH, RANGE 30 EAST, N.M.P.M., CHAVES COUNTY, NEW MEXICO.

BASIN SURVEYS P.O. BOX 1786—HOBBS, NEW MEXICO

W.O. Number: 0083

Drawn By: K. GOAD

Date: 02-15-2000

Disk: KJG #123 - 0083A.DWG

Survey Date: 02-14-2000

Sheet 1 of 1 Sheets