

UNITED STATES
DEPARTMENT OF THE INTERIOR
GEOLOGICAL SURVEY

APPLICATION FOR PERMIT TO DRILL, DEEPEN, OR PLUG BACK

1a. TYPE OF WORK

DRILL ☐DEEPEN ☐PLUG BACK ☐

b. TYPE OF WELL

OIL
WELL ☒GAS
WELL ☐OTHER ☐

2. NAME OF OPERATOR

Ray Westall

3. ADDRESS OF OPERATOR

P. O. Box 4 Loco Hills, NM 88255

4. LOCATION OF WELL (Report location clearly and in accordance with any State requirements.)*

At surface

2290' FNL & 2317' FWL

At proposed prod. zone

14. DISTANCE IN MILES AND DIRECTION FROM NEAREST TOWN OR POST OFFICE*

7 1/2 miles SW of Loco Hills, NM

15. DISTANCE FROM PROPOSED*

LOCATION TO NEAREST

PROPERTY OR LEASE LINE, FT.

(Also to nearest drlg. unit line, if any)

660'

18. DISTANCE FROM PROPOSED LOCATION*
TO NEAREST WELL, DRILLING, COMPLETED,
OR APPLIED FOR, ON THIS LEASE, FT.

100'

16. NO. OF ACRES IN LEASE

720

19. PROPOSED DEPTH

3100'

17. NO. OF ACRES ASSIGNED
TO THIS WELL

40

20. ROTARY OR CABLE TOOLS

Rotary

21. ELEVATIONS (Show whether DF, RT, GR, etc.)

3441. GR

22. APPROX. DATE WORK WILL START*

ASAP

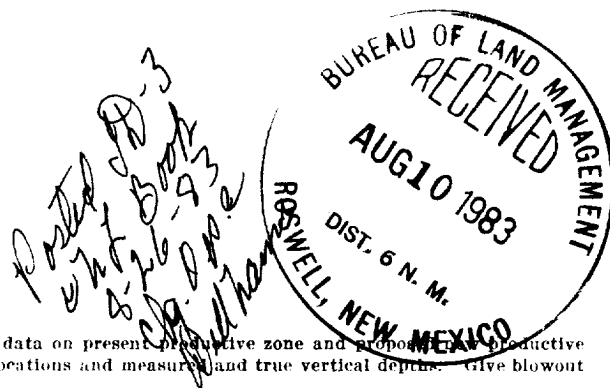
23.

PROPOSED CASING AND CEMENTING PROGRAM

SIZE OF HOLE	SIZE OF CASING	WEIGHT PER FOOT	SETTING DEPTH	QUANTITY OF CEMENT
12 1/2"	8 5/8"	24#	350'	250 sx circulate
8"	5 1/2"	17#	3100'	1000 sx
	re-enter			

We propose to tie onto the 8 5/8" casing and circulate cement to surface, drill plug and clean out well to 3100', run 5 1/2" casing and circulate cement if possible.

Form G.V. Price - Placid #2
P & H 7-12-1979



IN ABOVE SPACE DESCRIBE PROPOSED PROGRAM: If proposal is to deepen or plug back, give data on present productive zone and proposed new productive zone. If proposal is to drill or deepen directionally, give pertinent data on subsurface locations and measured and true vertical depths. Give blowout preventer program, if any.

24.

SIGNED

Ray Westall

TITLE

Operator

DATE

8-8-83

(This space for Federal or State office use)

PERMIT NO.

APPROVAL DATE

APPROVED BY

A. G. Hope

TITLE

DATE

8/18/83

CONDITIONS OF APPROVAL, IF ANY:

NMOC Approval For Mouthado Location

MEXICO OIL CONSERVATION COMMISSION
WELL LOCATION AND ACREAGE DEDICATION PLAT

Form C-102
 Supersedes C-128
 Effective 1-1-65

All distances must be from the outer boundaries of the Section.

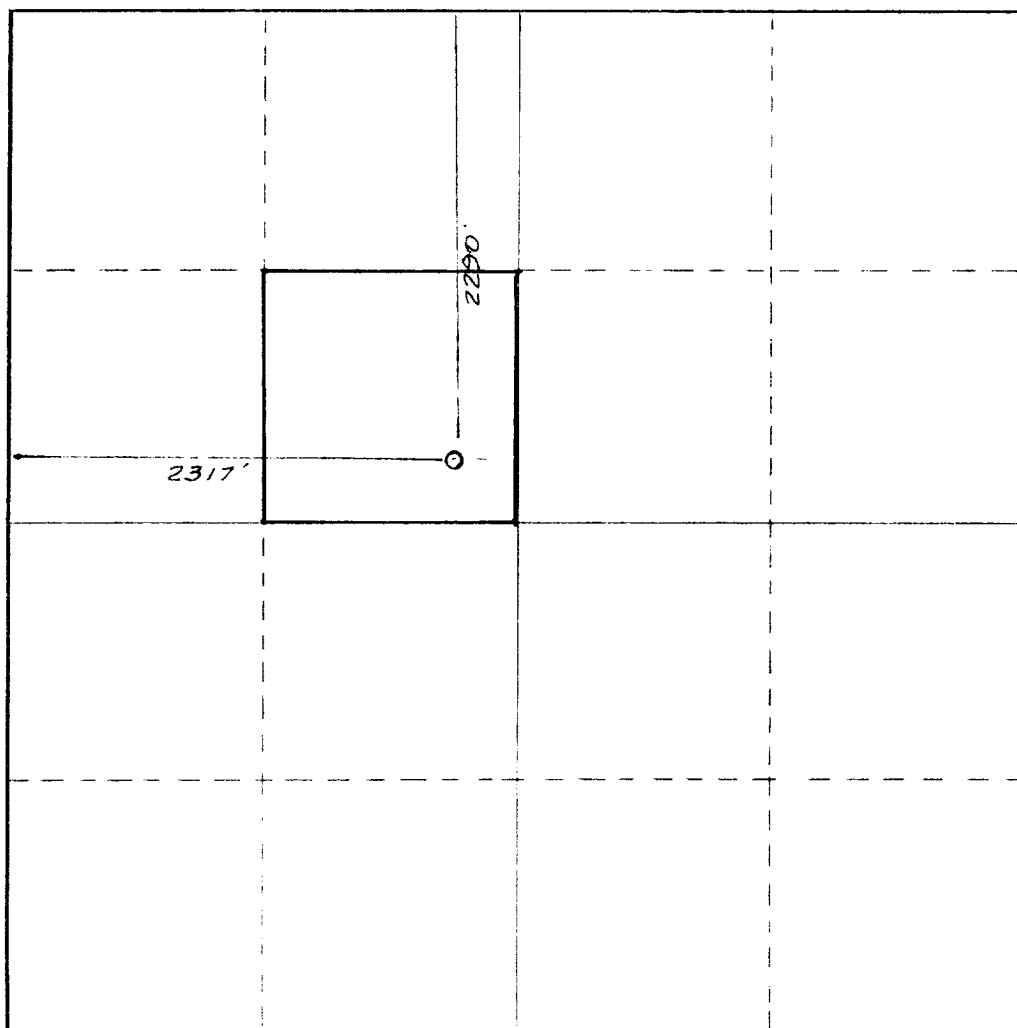
Operator RAY WESTALL			Lease Denton Federal			Well No. 7		
Unit Letter F	Section 22	Township 18 South	Range 29 East	County Eddy				
Actual Footage Location of Well: 2290 feet from the North line and 2317 feet from the West line								
Ground Level Elev. 3441.	Producing Formation <i>San Anselmo</i>		Pool <i>Denton Fed. 6-9-8</i>			Dedicated Acreage: 40 Acres		

1. Outline the acreage dedicated to the subject well by colored pencil or hachure marks on the plat below.
2. If more than one lease is dedicated to the well, outline each and identify the ownership thereof (both as to working interest and royalty).
3. If more than one lease of different ownership is dedicated to the well, have the interests of all owners been consolidated by communitization, unitization, force-pooling, etc?

☐ Yes ☐ No If answer is "yes," type of consolidation _____

If answer is "no," list the owners and tract descriptions which have actually been consolidated. (Use reverse side of this form if necessary.) _____

No allowable will be assigned to the well until all interests have been consolidated (by communitization, unitization, forced-pooling, or otherwise) or until a non-standard unit, eliminating such interests, has been approved by the Commission.



CERTIFICATION

I hereby certify that the information contained herein is true and complete to the best of my knowledge and belief.

Name: *Ray Westall*

Position: **OPERATOR**

Company: **RAY WESTALL**

Date: **August 1, 1983**

I hereby certify that the well location shown on this plat was plotted from field notes of actual surveys made by me or under my supervision, and that the same is true and correct to the best of my knowledge and belief.

Date Surveyed

July 16, 1983

Registered Professional Engineer and/or Land Surveyor

Certificate No.

NM PE&LS #5412

APPLICATION FOR DRILLING

Ray Westall Denton #7
2290 FNL & 2317 FWL
S-22 T-18S R-29E
Eddy County, New Mexico

In conjunction with Form 9-331C, Application for Permit to Drill subject well, Ray Westall submits the following ten items of pertinent information in accordance with USGS requirements:

1. The geological surface formation is quaternary.
2. The estimated tops of geologic markers are as follows:

Yates	1400'
7 Rivers	1750'
Queen	2050'
Grayburg	2500'
San Andres	3000'

3. The estimated depths at which anticipated water, oil and gas formations are expected to be encountered:

Water:	Approximately	180'
Oil & Gas:	Yates	1400'
	7 Rivers	1700'
	Queen	2050'
	Grayburg	2500'
	San Andres	3000'

4. Proposed Casing Program: See Form 9-331C.
5. Pressure Control Equipment: See Form 9-331C and Exhibit E.
6. Mud Program: Mud up 150' before TD and circulate 2 hours after TD and pull out laying down and run casing.
7. Auxiliary Equipment: N/A
8. Testing, Logging and Coring Program: Logging casing compensated Neutron with Gamma Ray Collar Log, Cement Bond with Nuclear log.
9. No abnormal pressures or temperatures are anticipated.
10. Anticipated Starting Date: As soon as possible.

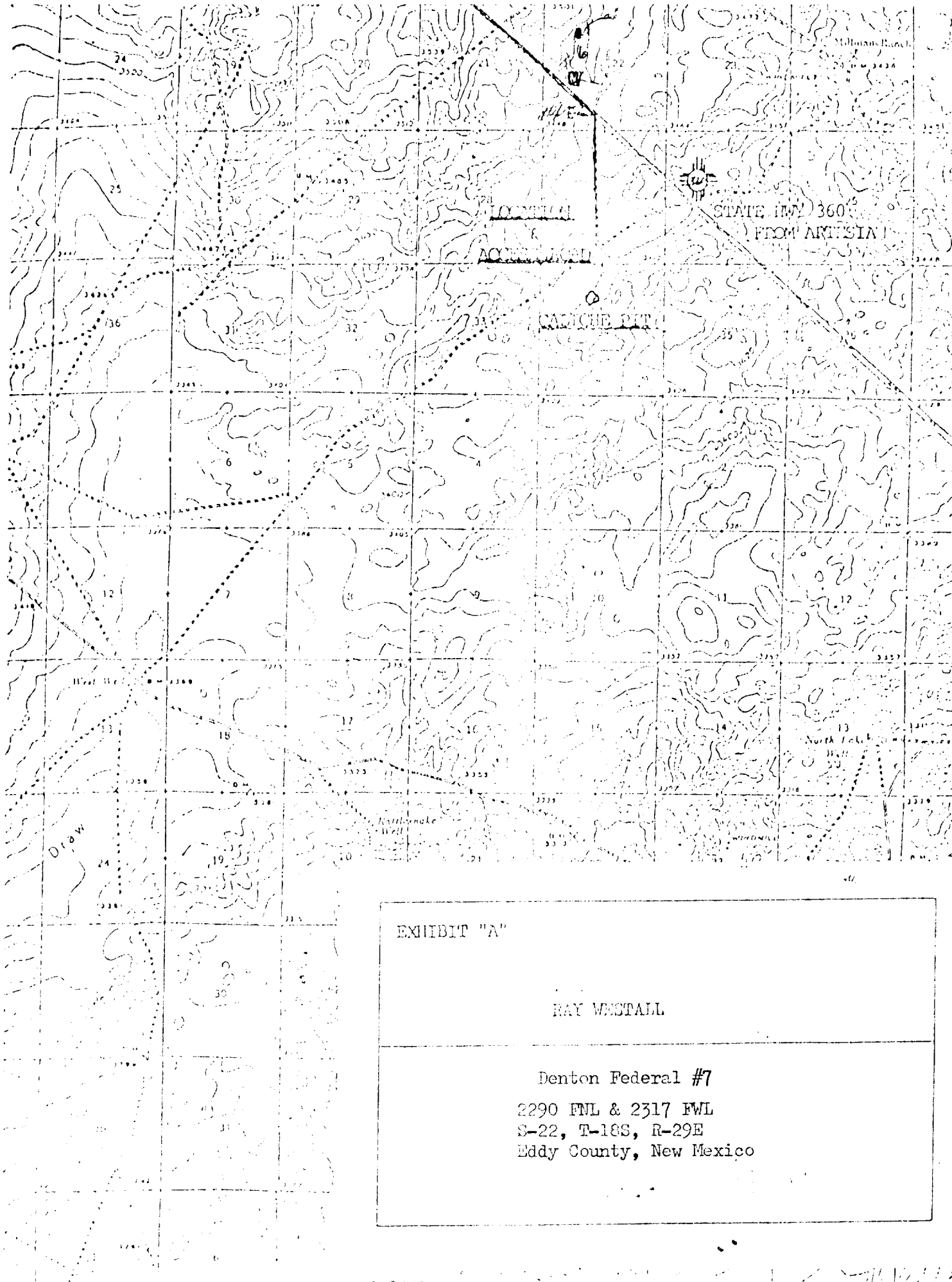


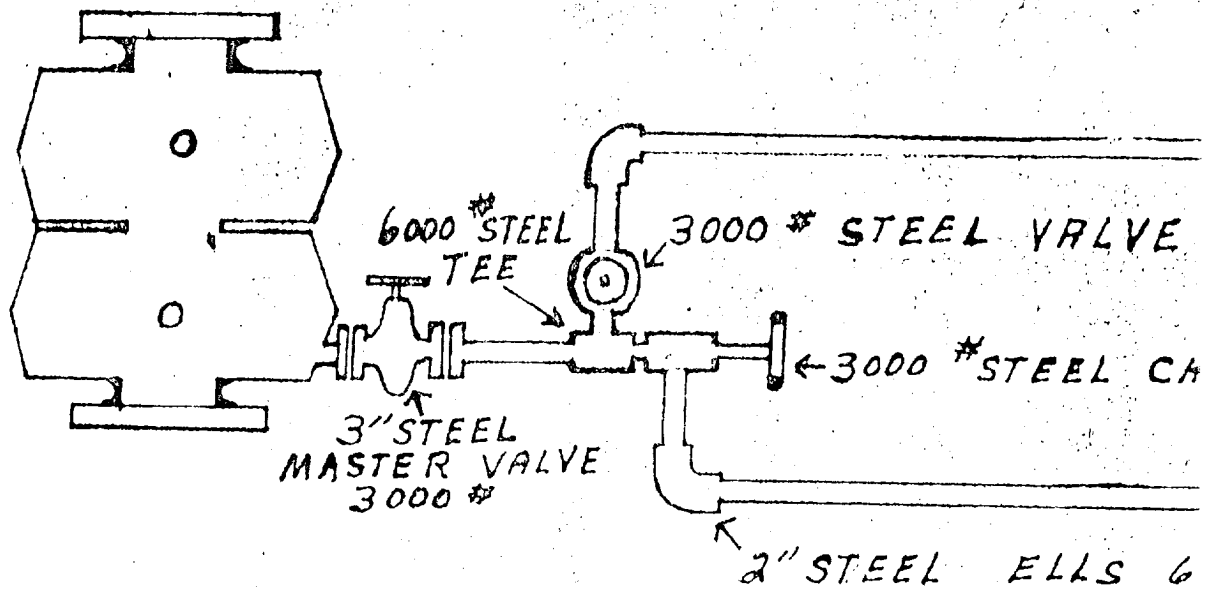
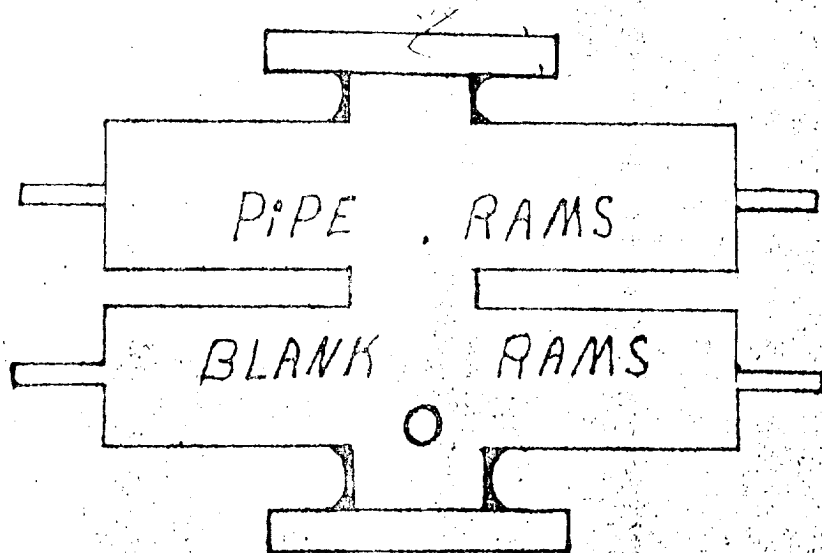
EXHIBIT "A"

RAY WESTALL

Denton Federal #7
2290 FNL & 2317 FWL
S-22, T-18S, R-29E
Eddy County, New Mexico

STATE 10520

Hydrolic CAMERON SS 10" X 900 X 3000



A 10x10 grid with 'N' at the top, 'S' at the bottom, 'W' on the left, and 'E' on the right.

[illegible]

TD

S/

[illegible]