

NEW MEXICO OIL CONSERVATION COMMISSION
WELL LOCATION AND ACREAGE DEDICATION PLAT

Form O-102
Supersedes O-122
Effective 1-1-65

All distances must be from the outer boundaries of the Section.

MURPHY MINERALS CORPORATION			Lease Robinson			Well No. 6		
Unit Letter J	Section 25	Township 16S	Range 31E	County Eddy				
Approximate Location of Well: 1920 feet from the S line and 3210 feet from the W line								
Ground Level Elev. 4265 D.F.	Producing Formation		Pool Grayburg-Jackson			Dedicated Acreage per Acre 40		

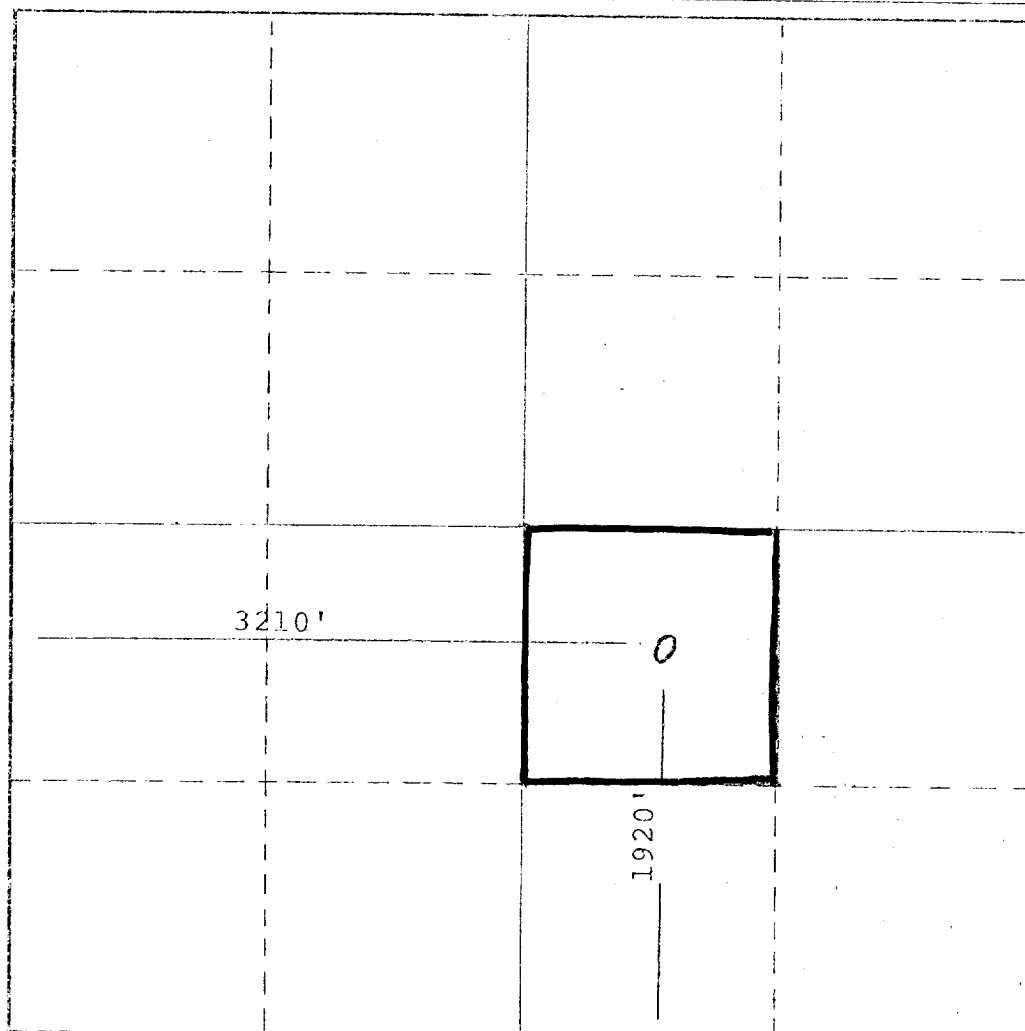
1. Outline the acreage dedicated to the subject well by colored pencil or hachure marks on the plat below.
2. If more than one lease is dedicated to the well, outline each and identify the ownership thereof (both as to working interest and royalty).
3. If more than one lease of different ownership is dedicated to the well, have the interests of all owners been consolidated by communitization, unitization, force-pooling, etc?

☐ Yes ☐ No If answer is "yes," type of consolidation

RECEIVED
APR - 2 - 1976
O. O. O.
ARTESIA OFFICE

If answer is "no," list the owners and tract descriptions which have actually been consolidated. (Use reverse side of this form if necessary.)

No allowable will be assigned to the well until all interests have been consolidated (by communitization, unitization, forced-pooling, or otherwise) or until a non-standard unit, eliminating such interests, has been approved by the Commission.



CERTIFICATION

I hereby certify that the information contained herein is true and complete to the best of my knowledge and belief.

T. M. Boyd
Name
T. M. Boyd

Position
Agent

Company
Murphy Minerals Corp.

Date
3/31/76

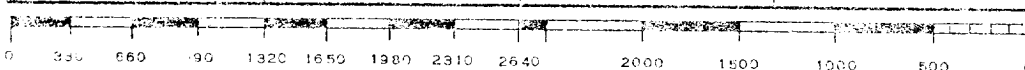
I hereby certify that the well location shown on this plat was plotted from field notes of actual surveys made by me or under my supervision, and that the same is true and correct to the best of my knowledge and belief.

See Attached Certificate

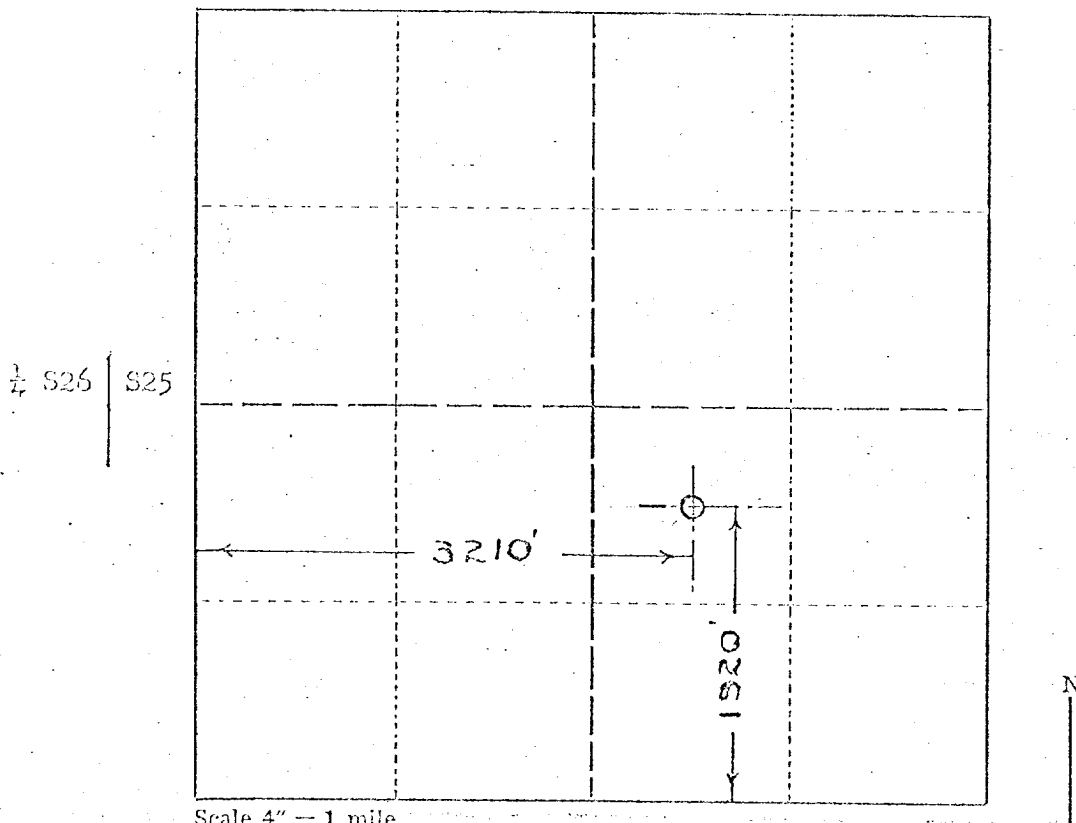
Date Surveyed

Registered Professional Engineer
and/or Land Surveyor

Certificate No.



Company Carper Drilling Company, Inc.
Lease Robinson Well No. 6A
Sec. 25 T. 16 S., R. 31 E., N.M.P.M.
Location NW $\frac{1}{4}$ SE $\frac{1}{4}$
County Eddy, New Mexico



Scale 4" = 1 mile.

This is to certify that the above plat was prepared from field notes of actual surveys made by me or under my supervision and that the same are true and correct to the best of my knowledge and belief.

Seal:
Artesia, New Mexico

Charles E. Stone
Registered Professional
Engineer and Land Surveyor.

Surveyed Nov. 27, 1950

14256-14307 Advocate Print