

UNITED STATES  
DEPARTMENT OF THE INTERIOR  
GEOLOGICAL SURVEY

30-015-20516

5. LEASE DESIGNATION AND SERIAL NO.  
NM 025503

6. IF INDIAN, ALLOTTEE OR TRIBE NAME

7. UNIT AGREEMENT NAME

8. FARM OR LEASE NAME  
Ginsberg Federal

9. WELL NO.  
#6

10. FIELD AND POOL, OR WILDCAT  
Shugart

11. SEC., T., R., M., OR BLK.  
AND SURVEY OR AREA  
Sec. 24, T-18S, R-30E

12. COUNTY OR PARISH  
Eddy

13. STATE  
N. Mex.

## APPLICATION FOR PERMIT TO DRILL, DEEPEN, OR PLUG BACK

1a. TYPE OF WORK

DRILL ☒DEEPEN ☐PLUG BACK ☐

b. TYPE OF WELL

OIL  
WELL ☒GAS  
WELL ☐

OTHER

OCT 18 1971

MULTIPLE  
ZONE ☐

2. NAME OF OPERATOR

Hanson Oil Corporation

3. ADDRESS OF OPERATOR

P. O. Box 1515 - Roswell, New Mexico 88201

4. LOCATION OF WELL (Report location clearly and in accordance with any State requirements.)\*

At surface

1650' FSL &amp; 2310' FWL

At proposed prod. zone

Sec. 24, T-18-S, R-30-E, NMPM

Eddy County, New Mexico

14. DISTANCE IN MILES AND DIRECTION FROM NEAREST TOWN OR POST OFFICE\*

6 miles south of Loco Hills, New Mexico

15. DISTANCE FROM PROPOSED\*

LOCATION TO NEAREST

PROPERTY OR LEASE LINE, FT.

(Also to nearest drig. unit line, if any)

330

16. NO. OF ACRES IN LEASE

800

17. NO. OF ACRES ASSIGNED

TO THIS WELL

40

18. DISTANCE FROM PROPOSED LOCATION\*  
TO NEAREST WELL, DRILLING, COMPLETED,  
OR APPLIED FOR, ON THIS LEASE, FT.

1320

19. PROPOSED DEPTH

4150'

20. ROTARY OR CABLE TOOLS

Rotary

21. ELEVATIONS (Show whether DF, RT, GR, etc.)

3592 GL

22. APPROX. DATE WORK WILL START\*

Nov. 1, 1971

23.

## PROPOSED CASING AND CEMENTING PROGRAM

SIZE OF HOLE	SIZE OF CASING	WEIGHT PER FOOT	SETTING DEPTH	QUANTITY OF CEMENT
12"	8-5/8	23#	800'	150 sx.
8"	5-1/2	15.5#	4150'	450 sx.

We propose drilling the referenced well with rotary tools to a total depth of approximately 4150' to test the Grayburg formation. If commercial production is encountered, the above casing program will be followed. Sufficient cement will be used to cover the base of the salt. The well will then be perforated and stimulated as conditions dictate.

RECEIVED  
OCT-81971  
U. S. GEOLOGICAL SURVEY  
ARTESIA, NEW MEXICO

IN ABOVE SPACE DESCRIBE PROPOSED PROGRAM: If proposal is to deepen or plug back, give data on present productive zone and proposed new productive zone. If proposal is to drill or deepen directionally, give pertinent data on subsurface locations and measured and true vertical depths. Give blowout preventer program, if any.

24.

SIGNED

*Reagan Sweet*

TITLE

Manager

DATE

10-6-71

(This space for Federal or State office use)

PERMIT NO.

APPROVAL DATE

APPROVED BY

TITLE

DATE

CONDITIONS OF APPROVAL, IF ANY:

\*See Instructions On Reverse Side

NEW MEXICO OIL CONSERVATION COMMISSION  
WELL LOCATION AND ACREAGE DEDICATION PLAT

Form C-102  
Supersedes C-128  
Effective 1-1-65

All distances must be from the outer boundaries of the Section.

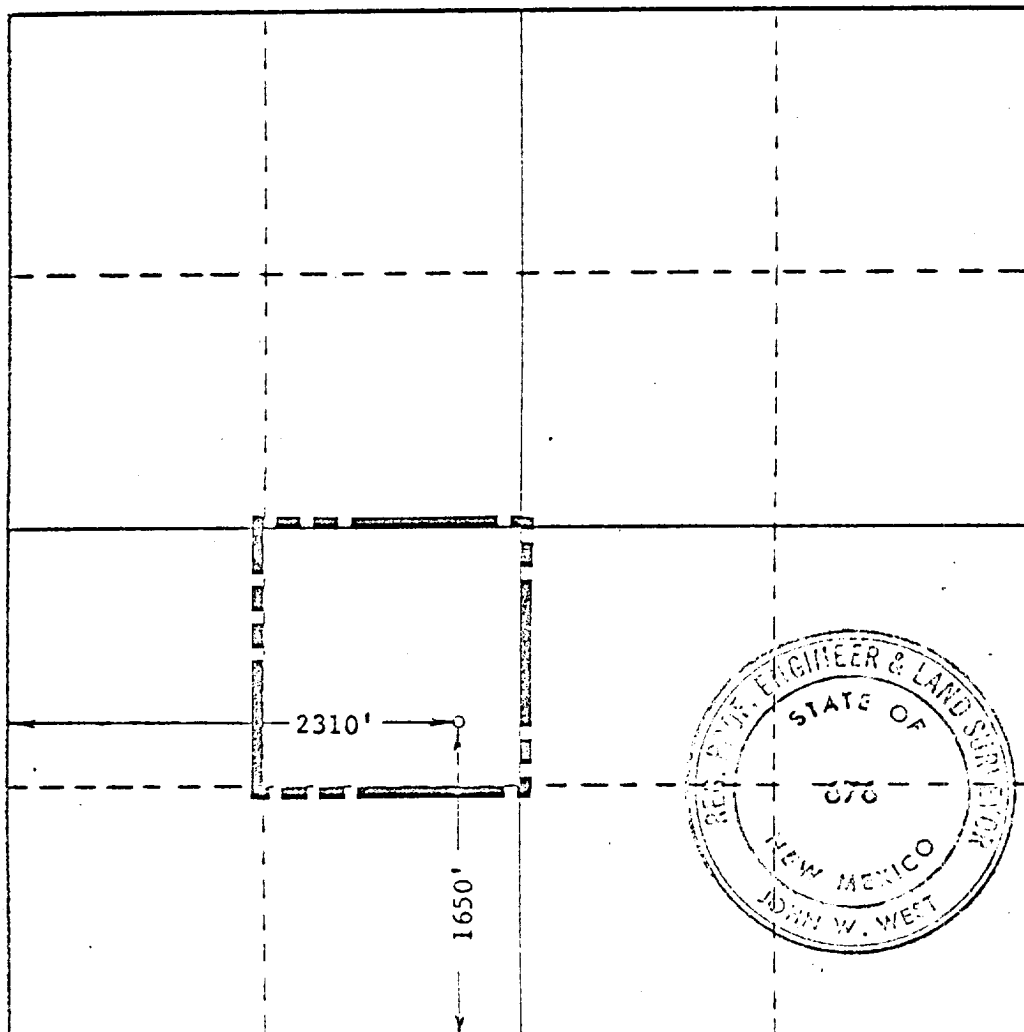
Operator <b>HANSON OIL CORP.</b>		Lease <b>GINSBERG FED.</b>		Well No. <b>6</b>
Unit Letter <b>K</b>	Section <b>24</b>	Township <b>18 SOUTH</b>	Range <b>30 EAST</b>	County <b>EDDY</b>
Actual Footage Location of Well: 1650 feet from the <b>SOUTH</b> line and 2310 feet from the <b>WEST</b> line				
Ground Level Elev. <b>3592 GL</b>	Producing Formation <b>Yates, Rivers, Queen &amp; Grayburg</b>		Pool <b>Shugart</b>	Dedicated Acreage: <b>40</b> Acres

1. Outline the acreage dedicated to the subject well by colored pencil or hachure marks on the plat below.
2. If more than one lease is dedicated to the well, outline each and identify the ownership thereof (both as to working interest and royalty).
3. If more than one lease of different ownership is dedicated to the well, have the interests of all owners been consolidated by communitization, unitization, force-pooling, etc?

☐ Yes ☐ No If answer is "yes," type of consolidation \_\_\_\_\_

If answer is "no," list the owners and tract descriptions which have actually been consolidated. (Use reverse side of this form if necessary.) \_\_\_\_\_

No allowable will be assigned to the well until all interests have been consolidated (by communitization, unitization, forced-pooling, or otherwise) or until a non-standard unit, eliminating such interests, has been approved by the Commission.



CERTIFICATION

I hereby certify that the information contained herein is true and complete to the best of my knowledge and belief.

Name Reagan Sweet  
Position Manager  
Company Hanson Oil Corp.  
Date 10/6/71

**RECEIVED**  
I hereby certify that the well location shown on this plat was plotted from field notes of actual survey made by me or under my supervision, and that the same is correct to the best of my knowledge and belief.  
**U.S. GEOLOGICAL SURVEY**  
**ARTESIA, NEW MEXICO**

Date Surveyed  
**SEPTEMBER 15, 1971**

Registered Professional Engineer and/or Land Surveyor

John W. West

Certificate No. **676**