

UNITED STATES
DEPARTMENT OF THE INTERIOR
GEOLOGICAL SURVEY

(Other side reverse side)

30-01520736

APPLICATION FOR PERMIT TO DRILL, DEEPEN, OR PLUG BACK

1a. TYPE OF WORK
DRILL ☒ DEEPEN ☐ PLUG BACK ☐

b. TYPE OF WELL
OIL WELL ☒ GAS WELL ☐ OTHER ☐
SINGLE ZONE ☒ MULTIPLE ZONE ☐

2. NAME OF OPERATOR
Gulf Oil Corporation

3. ADDRESS OF OPERATOR
Box 670, Hobbs, New Mexico 88240

4. LOCATION OF WELL (Report location clearly and in accordance with any State requirements.)
At surface 1980' FSL & 660' FWL, Section 9, 17-S, 30-E
At proposed prod. zone

14. DISTANCE IN MILES AND DIRECTION FROM NEAREST TOWN OR POST OFFICE*

10. DISTANCE FROM PROPOSED* LOCATION TO NEAREST PROPERTY OR LEASE LINE, FT. (Also to nearest drlg. unit line, if any)
18. DISTANCE FROM PROPOSED LOCATION* TO NEAREST WELL, DRILLING, COMPLETED, OR APPLIED FOR, ON THIS LEASE, FT.

16. NO. OF ACRES IN LEASE
80

19. PROPOSED DEPTH
3700'

17. NO. OF ACRES ASSIGNED TO THIS WELL
40

20. ROTARY OR CABLE TOOLS
Rotary

21. ELEVATIONS (Show whether DF, RT, GR, etc.)

22. APPROX. DATE WORK WILL START*
September 1, 1972

23. PROPOSED CASING AND CEMENTING PROGRAM

SIZE OF HOLE	SIZE OF CASING	WEIGHT PER FOOT	SETTING DEPTH	QUANTITY OF CEMENT
11"	8-5/8"	24# K-55	450'	200 sacks Class C W/2% Ca Cl2
7-7/8"	4-1/2"	9.50# H-40	3700'	570 sacks Class C

Proposed Mud Program

0' - 450' Spud Mud
450' - 2700' Brine Water
2700' - TD Salt Water Gel

RECEIVED
AUG 22 1972
U. S. GEOLOGICAL SURVEY
ALBUQUERQUE, NEW MEXICO

IN ABOVE SPACE DESCRIBE PROPOSED PROGRAM: If proposal is to deepen or plug back, give data on present productive zone and proposed new productive zone. If proposal is to drill or deepen directionally, give pertinent data on subsurface locations and measured and true vertical depths. Give blowout preventer program, if any.

24. SIGNED [Signature] TITLE Area Production Manager DATE August 21, 1972

(This space for Federal or State office use)

PERMIT NO. _____ APPROVAL DATE _____

DATE _____

APPROVED
AUG 23 1972
R. C. BEEKMAN
ACTING DISTRICT ENGINEER

THIS APPROVAL IS RESCINDED IF OPERATIONS ARE NOT COMMENCED WITHIN 3 MONTHS.
NOV 28 1972
EXPIRES

*See Instructions On Reverse Side

**NEW MEXICO OIL CONSERVATION COMMISSION
WELL LOCATION AND ACREAGE DEDICATION PLAT**

Form C-102
Supersedes C-128
Effective 1-1-65

All distances must be from the outer boundaries of the Section

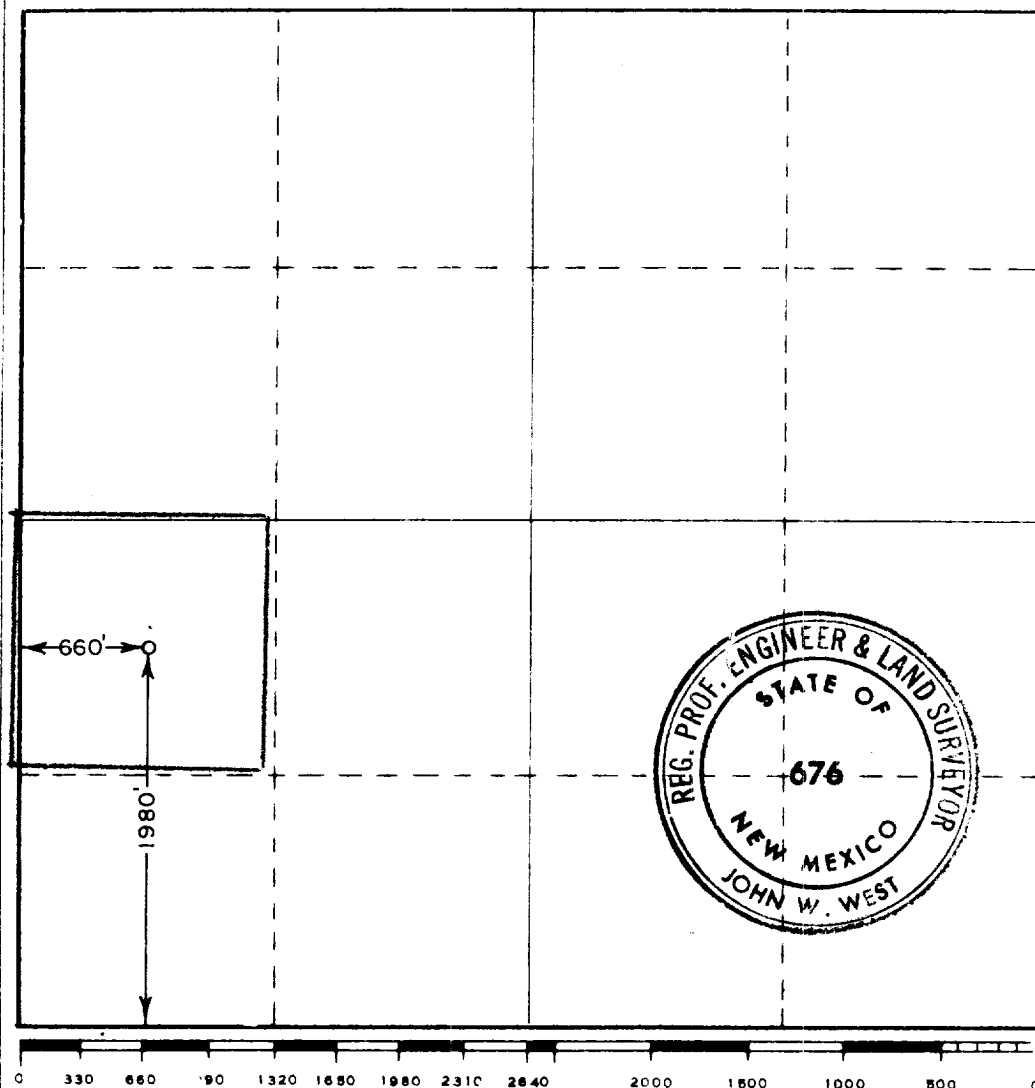
Operator GULF OIL CORPORATION			Lease HOLDER "CB" NOT B FEDERAL		Well No. 4
Tract Letter L	Section 9	Township 17 SOUTH	Range 30 EAST	County EDDY	
Actual Footage Location of Well: 1980 feet from the SOUTH line and 660 feet from the WEST line					
Ground Level Elev.	Producing Formation Grayburg		Pool Grayburg Jackson		Dedicated Acreage: 40 Acres

- Outline the acreage dedicated to the subject well by colored pencil or hachure marks on the plat below.
- If more than one lease is dedicated to the well, outline each and identify the ownership thereof (both as to working interest and royalty).
- If more than one lease of different ownership is dedicated to the well, have the interests of all owners been consolidated by communitization, unitization, force-pooling, etc?

☐ Yes ☐ No If answer is "yes," type of consolidation _____

If answer is "no," list the owners and tract descriptions which have actually been consolidated. (Use reverse side of this form if necessary.) _____

No allowable will be assigned to the well until all interests have been consolidated (by communitization, unitization, forced-pooling, or otherwise) or until a non-standard unit, eliminating such interests, has been approved by the Commission.



CERTIFICATION

I hereby certify that the information contained herein is true and complete to the best of my knowledge and belief.

**ORIGINAL SIGNED BY
G. D. BORLAND**

Name
C. D. BORLAND
Position
Area Production Manager
Company
Gulf Oil Corporation
Date
August 21, 1972

I hereby certify that the well location shown on this plat was obtained from field notes of actual surveys made by me or under my supervision and that the same is true and correct to the best of my knowledge and belief.

**RECEIVED
AUG 22 1972
U.S. GEOLOGICAL SURVEY
ARTESIAN, NEW MEXICO**

Date Surveyed
AUGUST 18, 1972
Registered Professional Engineer
and/or Land Surveyor

John W. West
Certificate No. **676**