



United States Department of the Interior

GEOLOGICAL SURVEY

P. O. DRAWER U
ARTESIA, NEW MEXICO 88210

June 20, 1973

RECEIVED

JUN 21 1973

O. C. G.
ARTESIA, OFFICE

Texas American Oil Corporation

1012 Midland Savings Building

Midland, Texas 79701

Approval Date: January 23, 1973

Application or Notice: Application to Drill

Well: No. 1-24 "24" Federal #1

Location: 1980/W 330/W 24-23E-31E

Lease Number: TM 2404496

Three months have elapsed since approval of the above, and no reports have been received to indicate commencement or progress on this well. Therefore, approval of the above automatically terminated three months from approval date.

Sincerely yours,

Jesse A. Kneaf

District Engineer

cc:
Roswell
OCC (2)

UNITED STATES
DEPARTMENT OF THE INTERIOR
GEOLOGICAL SURVEY

30-015-20802

APPLICATION FOR PERMIT TO DRILL, DEEPEN, OR PLUG BACK

1a. TYPE OF WORK

DRILL DEEPEN PLUG BACK

5. LEASE DESIGNATION AND SERIAL NO.

NM 0404498

6. IF INDIAN, ALLOTTEE OR TRIBE NAME

7. UNIT AGREEMENT NAME

8. FARM OR LEASE NAME

Todd "24" Federal

9. WELL NO.

1

10. FIELD AND POOL, OR WILDCAT

Sand Dunes
(Cherry Canyon)

11. SEC., T., R., M., OR BLK.
AND SURVEY OR AREA

Sec 24, T-23-S, R-31-E

b. TYPE OF WELL

OIL WELL GAS WELL OTHER SINGLE ZONE MULTIPLE ZONE

2. NAME OF OPERATOR

Texas American Oil Corporation

3. ADDRESS OF OPERATOR

1012 Midland Savings Building, Midland, Texas

JAN 24 1973

4. LOCATION OF WELL (Report location clearly and in accordance with any State requirements.*)

At surface

O. C. C.

1980' FNL, 330' FWL

ARTESIA, OFFICE

At proposed prod. zone

14. DISTANCE IN MILES AND DIRECTION FROM NEAREST TOWN OR POST OFFICE*

35 miles northwest Jal, New Mexico

12. COUNTY OR PARISH | 13. STATE

Eddy | New Mexico

10. DISTANCE FROM PROPOSED* LOCATION TO NEAREST PROPERTY OR LEASE LINE, FT.

(Also to nearest drlg. unit line, if any) 330'

16. NO. OF ACRES IN LEASE

320'

17. NO. OF ACRES ASSIGNED TO THIS WELL

40

18. DISTANCE FROM PROPOSED LOCATION* TO NEAREST WELL, DRILLING, COMPLETED, OR APPLIED FOR, ON THIS LEASE, FT.

1320'

19. PROPOSED DEPTH

6200'

20. ROTARY OR CABLE TOOLS

Rotary

21. ELEVATIONS (Show whether DF, RT, GR, etc.)

3479.0 GR

22. APPROX. DATE WORK WILL START*

March 1, 1973

23.

PROPOSED CASING AND CEMENTING PROGRAM

SIZE OF HOLE	SIZE OF CASING	WEIGHT PER FOOT	SETTING DEPTH	QUANTITY OF CEMENT
12-1/4"	8-5/8"	24#	600	380 sx or Circ (1)
7-7/8"	5-1/2"	15.5#	6200	2660 (2)

(1) Circulate cement on surface casing.

(2) Two-stage cement tool at 4330' and cement as follows: First Stage - 660 sx Class C. Second Stage - 2000 sx lite w/3# Gilsonite/sx. Cover salt section and tie back to surface casing.

RECEIVED
DEC 15 1972
U. S. GEOLOGICAL SURVEY
ARTESIA, N. M.

IN ABOVE SPACE DESCRIBE PROPOSED PROGRAM: If proposal is to deepen or plug back, give data on present productive zone and proposed new productive zone. If proposal is to drill or deepen directionally, give pertinent data on subsurface locations and measured and true vertical depths. Give blowout preventer program, if any.

24.

SIGNED

[Signature]

TITLE Engineer

DATE December 14, 1972

(This space for Federal or State office use)

PERMIT NO.

APPROVED BY

CONDITIONS OF APPROVAL, IF ANY:

[Signature]

H. L. BEEKMAN

ACTING DISTRICT ENGINEER

THIS APPROVAL IS RESCINDED IF OPERATIONS ARE NOT COMMENCED WITHIN 3 MONTHS
APR 23 1973
*See Instructions On Reverse Side

MEXICO OIL CONSERVATION COMMISSION
WELL LOCATION AND ACREAGE DEDICATION PLAT

Form C-102
Supersedes C-128
Effective 1-1-65

All distances must be from the outer boundaries of the Section.

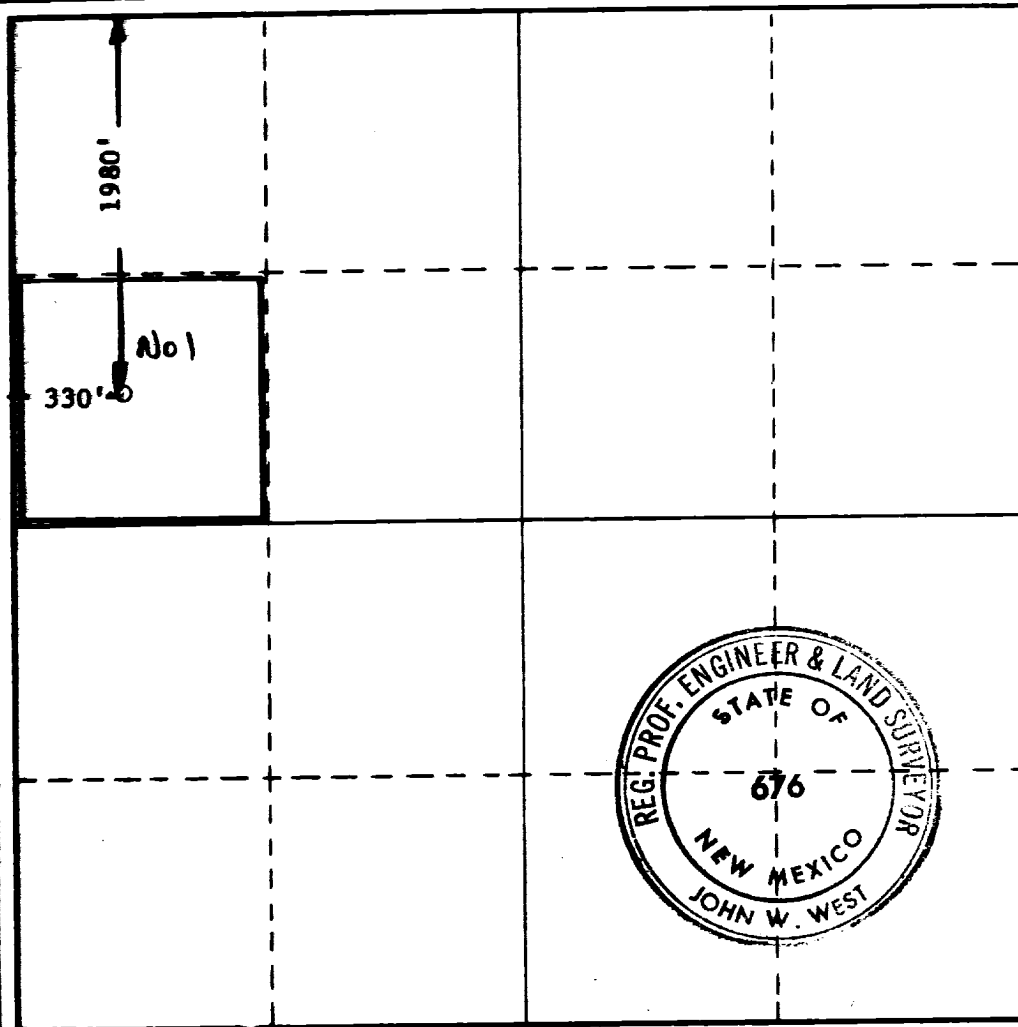
Operator TEXAS AMERICAN OIL CORP.		Lease TODD 24 FEDERAL		Well No. 1
Section 24	Township 23 SOUTH	Range 31 EAST	County EDDY	
Actual Platting Location of Well: 1980 feet from the NORTH line and 330 feet from the WEST line				
Ground Level Elev. 3479.0	Producing Formation Cherry Canyon	Pool <i>Und.</i> Sand Dunes (Cherry Canyon)	Dedicated Acreage: 40 Acres	

1. Outline the acreage dedicated to the subject well by colored pencil or hachure marks on the plat below.
2. If more than one lease is dedicated to the well, outline each and identify the ownership thereof (both as to working interest and royalty).
3. If more than one lease of different ownership is dedicated to the well, have the interests of all owners been consolidated by communitization, unitization, force-pooling, etc?

Yes No If answer is "yes," type of consolidation _____

If answer is "no," list the owners and tract descriptions which have actually been consolidated. (Use reverse side of this form if necessary.) _____

No allowable will be assigned to the well until all interests have been consolidated (by communitization, unitization, forced-pooling, or otherwise) or until a non-standard unit, eliminating such interests, has been approved by the Commission.



CERTIFICATION

I hereby certify that the information contained herein is true and complete to the best of my knowledge and belief.

[Handwritten Signature]

Name N. T. Emanuel
Position Engineer
Company Texas American Oil Corp.
Date December 14, 1972

I hereby certify that the well location shown on this plat was plotted from field notes of actual surveys made by me or under my supervision, and that the same is true and correct to the best of my knowledge and belief.

Date Surveyed DEC. 4, 1972
Registered Professional Engineer and/or Land Surveyor

[Handwritten Signature]
Certificate No. **676**



TEXAS AMERICAN OIL CORPORATION

300 WEST WALL, SUITE 1012 MIDLAND, TEXAS 79701 915-683-4811

January 18, 1973

Todd "24" Federal, Well No. 1
1980' FNL, 330' FWL,
Section 24, T-23-S, R-31-E,
Eddy County, New Mexico

Gentlemen:

As per instructions for submitting an application to drill on shore or off shore, gas or oil, or geothermal steam wells, on public domain and acquired lands, Texas American Oil Corporation answers these questions as follows:

- 1) Existing Roads: Exhibit "A" shows the existing roads in blue lines.
- 2) Planned Access Roads: Exhibit "A" shows in red line the proposed road.
- 3) Location of Well: Shown above and also on Exhibit "A".
- 4) Lateral Roads to Location: None.
- 5) Location of Tank Battery and Flow Lines: If the above well is productive, Tank Battery and Flow Lines will be located on Caliche Pad at well.
- 6) Location and Types of Water Supply: Water to be hauled.
- 7) Methods for Handling Waste Disposal: A reserve pit located as per Exhibit "B" will be used for handling all wastes.
- 8) Location of Camps: None.
- 9) Location of Air Strip: None.
- 10) Location of Rig, Mud Tanks, Reserve Pits, Burn Pits, Pipe Racks, etc.: See Exhibit "C" attached.

Page Two


11) Plans for Restoration of the Surface: After drilling the well, Texas American will level all pits and location as near to original ground level as possible. This location is in an arid region on which there is very little surface grass.

12) Detailed Mud Program:

0 - 600' - Fresh water spud mud.
600 - 6200' - Brine water with lime and loss circulation material as needed. Use Floccel for fluid loss before coring. Water loss 10 - 15 cc.
Viscosity 35 - 37.

13) Blow Out Preventer: See attached Exhibit "C" for detail.

Yours very truly,

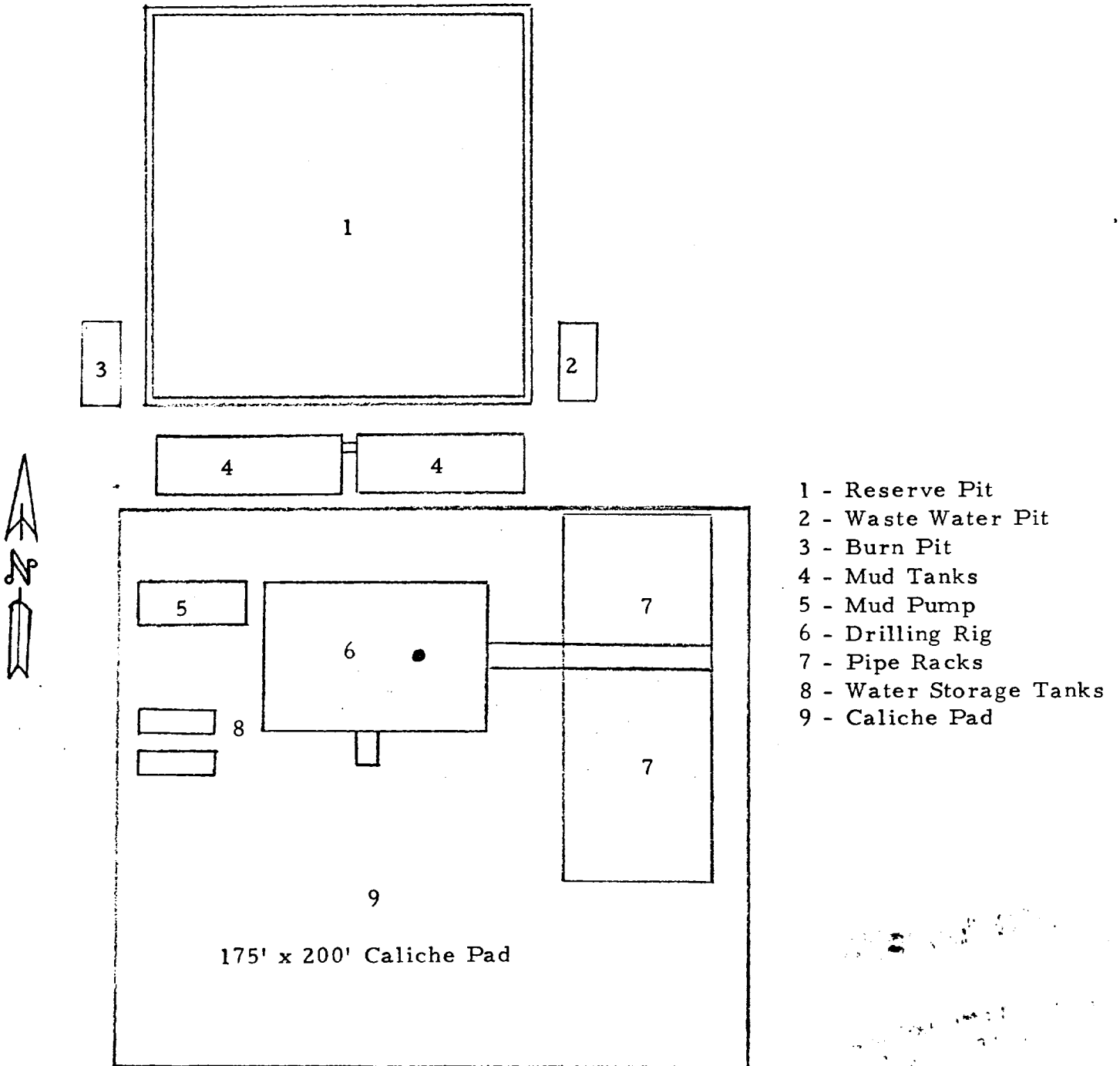


N. T. Emanuel
Engineer

NTE:cc

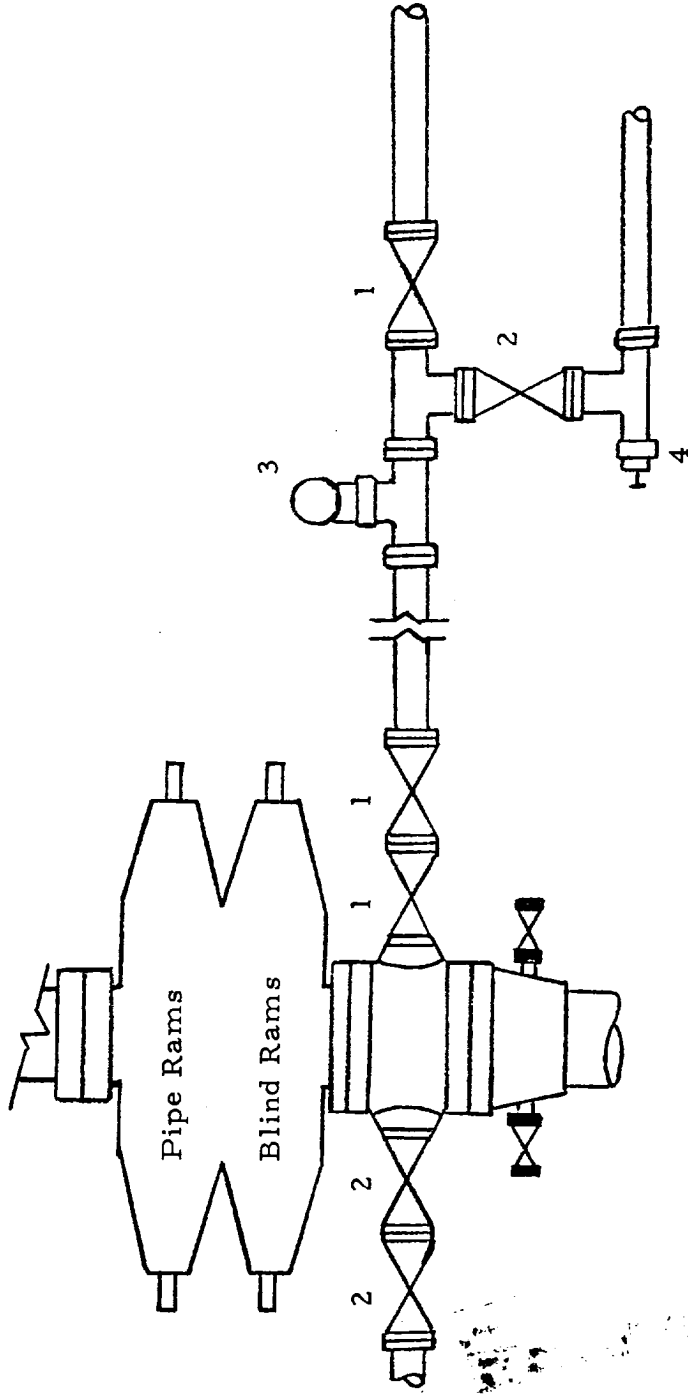
Attachments

DRILLING LOCATION

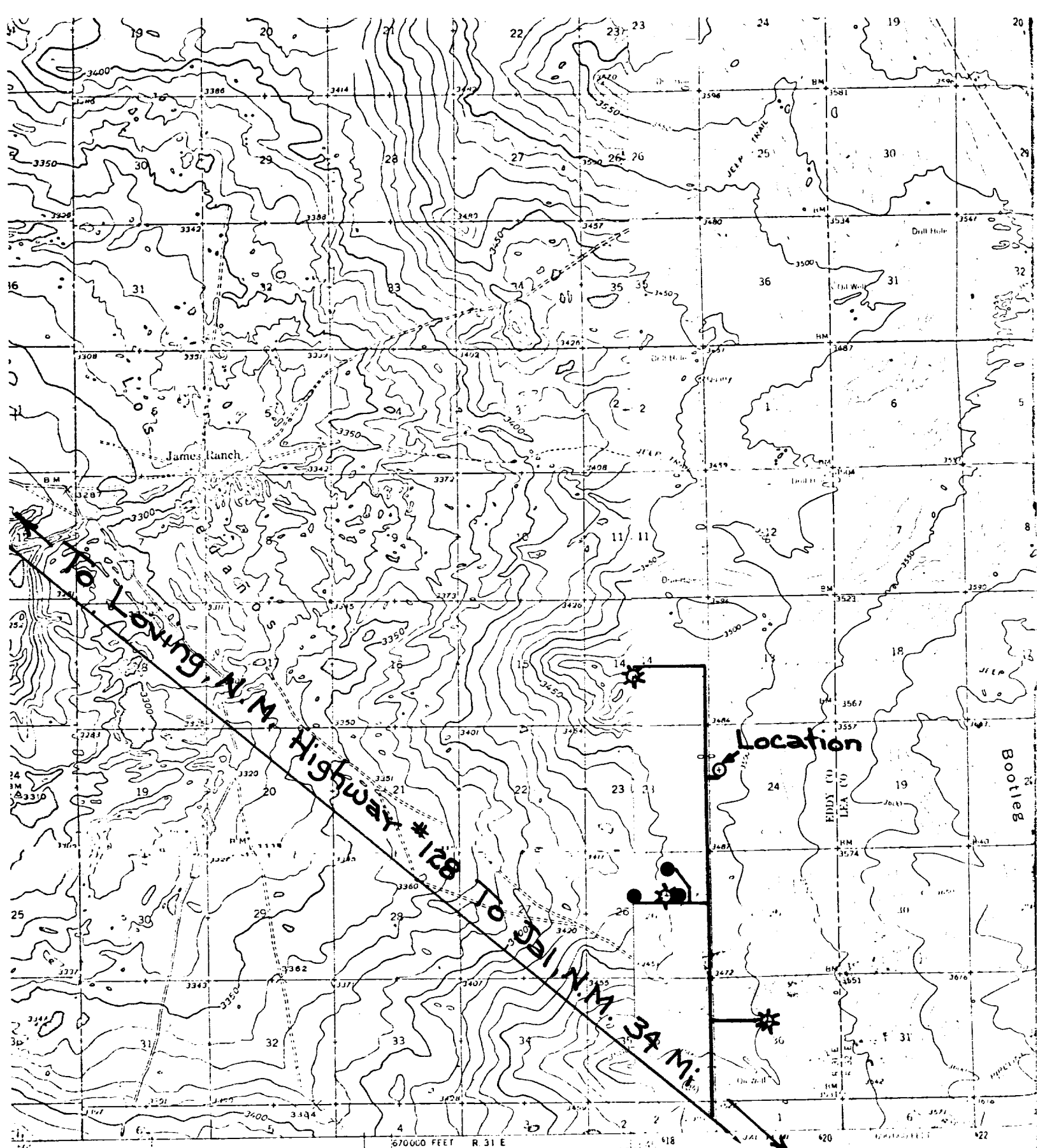


- 1 - Reserve Pit
- 2 - Waste Water Pit
- 3 - Burn Pit
- 4 - Mud Tanks
- 5 - Mud Pump
- 6 - Drilling Rig
- 7 - Pipe Racks
- 8 - Water Storage Tanks
- 9 - Caliche Pad

DOUBLE SERIES 900 BLOW OUT PREVENTER



- 1 - 4" Series 900 Valves
- 2 - 2" Series 900 Valves
- 3 - 2" Mud Pressure Gauge
- 4 - 2" Series 900 Choke



4 Miles
 1 Yard
ROUTES USUALLY TRAVELED
 HARD IMPERVIOUS SURFACES
 OTHER SURFACE IMPROVEMENTS
 U. S. ROUTE 1942
 STATE ROUTE

Polyconic projection. 1927 North American datum.
 5000 yard grid based on U. S. zone system, a
 10000 foot grid based on New Mexico (East)
 rectangular coordinate system

Mapped, edited, and published by the Geological Survey

NASH DRAW, N. MEX.

EXHIBIT "A"