

UNITED STATES
DEPARTMENT OF THE INTERIOR
GEOLOGICAL SURVEY

30-015-21171

APPLICATION FOR PERMIT TO DRILL, DEEPEN, OR PLUG BACK

1a. TYPE OF WORK DRILL <input checked="" type="checkbox"/> DEEPEN <input type="checkbox"/> PLUG BACK <input type="checkbox"/>			5. LEASE DESIGNATION AND SERIAL NO. NM 12832		
b. TYPE OF WELL OIL WELL <input checked="" type="checkbox"/> GAS WELL <input type="checkbox"/> OTHER <input type="checkbox"/>			6. IF INDIAN, ALLOTTEE OR TRIBE NAME		
2. NAME OF OPERATOR Yates Petroleum Corporation			7. UNIT AGREEMENT NAME		
3. ADDRESS OF OPERATOR 207 South 4th Street - Artesia, NM 88210			8. FARM OR LEASE NAME Federal IND "CD"		
4. LOCATION OF WELL (Report location clearly and in accordance with any State requirements.) At surface 2310' FWL & 1650' FSL of Sec. 29-17S-25E			9. WELL NO. 3		
14. DISTANCE IN MILES AND DIRECTION FROM NEAREST TOWN OR POST OFFICE Approx. 6 miles SW of Artesia, NM			10. FIELD AND POOL, OR WILDCAT Eagle Creek S.A.		
16. NO. OF ACRES IN LEASE			11. SEC., T., R., M., OR BLK. AND SURVEY OR AREA Sec. 29-17S-25E		
17. NO. OF ACRES ASSIGNED TO THIS WELL 40			12. COUNTY OR PARISH Eddy		
18. DISTANCE FROM PROPOSED LOCATION* TO NEAREST WELL, DRILLING, COMPLETED, OR APPLIED FOR, ON THIS LEASE, FT.			13. STATE NM		
19. PROPOSED DEPTH Approx. 1800'			20. ROTARY OR CABLE TOOLS Rotary		
21. ELEVATIONS (Show whether DF, RT, GR, etc.) 3605' GR			22. APPROX. DATE WORK WILL START As soon as approved		

23. PROPOSED CASING AND CEMENTING PROGRAM				
SIZE OF HOLE	SIZE OF CASING	WEIGHT PER FOOT	SETTING DEPTH	QUANTITY OF CEMENT
9-7/8"	7"	20 & 23#	Approx. 1000'	400 sx - circulate
6-1/4"	4 1/2" & 5 1/2"	9.5 & 15.5#	" 1800'	200 sx

Propose to drill a San Andres test w/9-7/8" hole to 100' below the Artesian zone, set 7" casing and circulate cement. If lost circulation is encountered while drilling surface hole, will ream approx. 200' of hole to 15" and run 10-3/4" casing and circulate the cement. A tapered 4 1/2" & 5 1/2" production casing will be run and we will acidize and Sand Frac thru perforations for production.

Mud Program: Fresh water gel & LCM to 1000'. Water to total depth.

BOP Program: BOP's will be installed on 7" casing and tested daily.

RECEIVED

RECEIVED

APR 3 1974

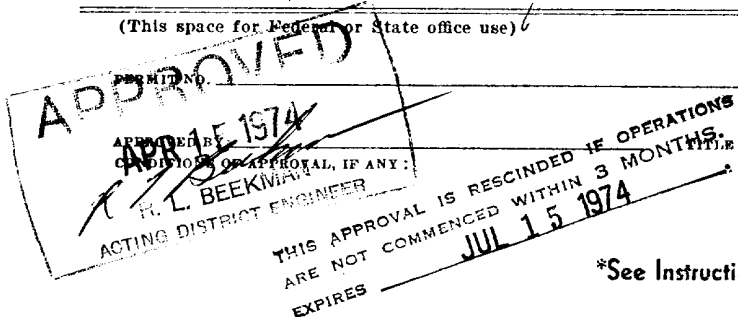
APR 16 1974

U. S. GEOLOGICAL SURVEY
ARTESIA, NEW MEXICO

IN ABOVE SPACE DESCRIBE PROPOSED PROGRAM: If proposal is to deepen or plug back, give data on present production and proposed new productive zone. If proposal is to drill or deepen directionally, give pertinent data on subsurface locations and measured and true vertical depths. Give blowout preventer program, if any.

24. Eddy M. Lindgren
SIGNED _____ TITLE Engineer DATE 4-3-74

(This space for Federal or State office use)



APPROVAL DATE

DECLARED WATER BASIN

CEMENT BEHIND THE 7"
CASING MUST BE CIRCULATED

*See Instructions On Reverse Side

NOTIFY USGS IN SUFFICIENT TIME TO
WITNESS CEMENTING THE 7" CASING

NEW MEXICO OIL CONSERVATION COMMISSION
WELL LOCATION AND ACREAGE DEDICATION PLAT

Form C-102
Supersedes C-128
Effective 1-1-65

All distances must be from the outer boundaries of the Section.

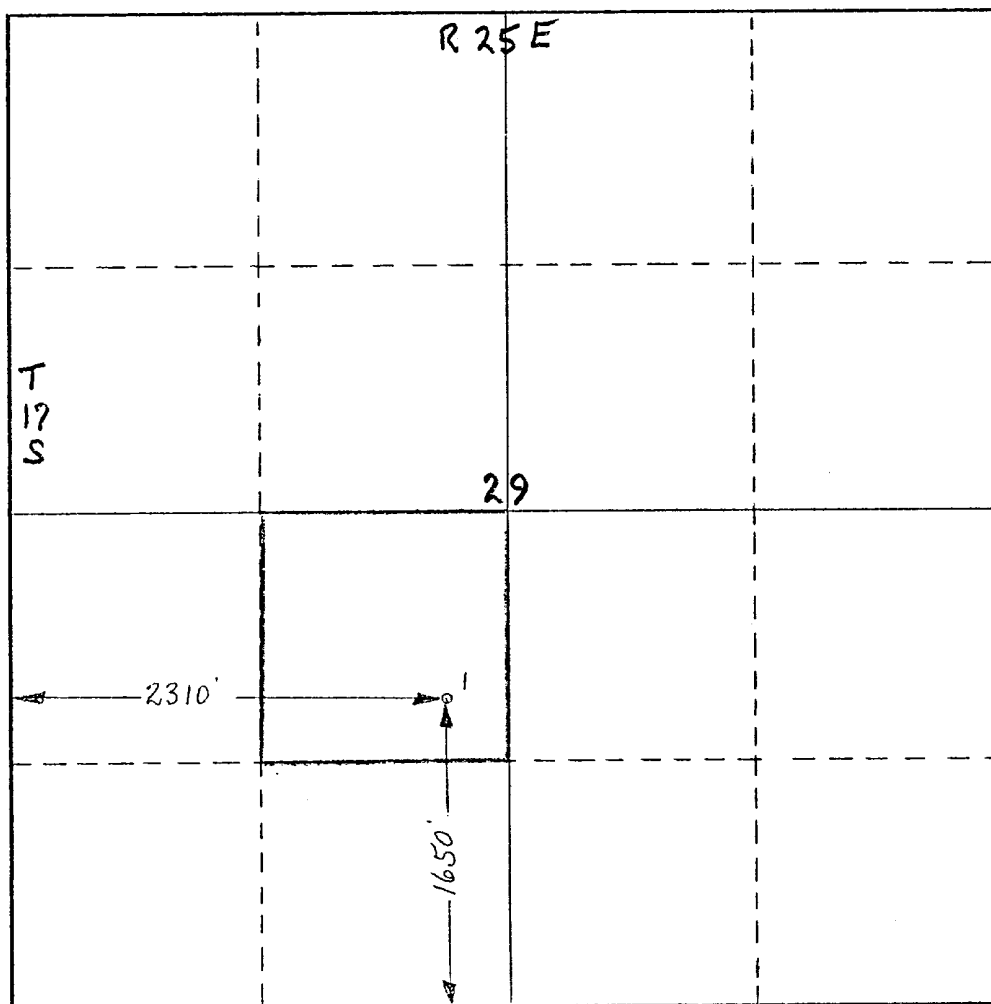
Operator Yates Petroleum Corporation			Lease Federal CD "CD"		Well No. 3
Unit Letter K	Section 29	Township 17S	Range 25E	County Eddy	
Actual Footage Location of Well: 2310 feet from the West line and 1650 feet from the South line					
Ground Level Elev. 3605	Producing Formation San Andres		Pool Eagle Creek S.A.		Dedicated Acreage: 40 Acres

1. Outline the acreage dedicated to the subject well by colored pencil or hachure marks on the plat below.
2. If more than one lease is dedicated to the well, outline each and identify the ownership thereof (both as to working interest and royalty).
3. If more than one lease of different ownership is dedicated to the well, have the interests of all owners been consolidated by communitization, unitization, force-pooling, etc?

☐ Yes ☐ No If answer is "yes," type of consolidation _____

If answer is "no," list the owners and tract descriptions which have actually been consolidated. (Use reverse side of this form if necessary.) _____

No allowable will be assigned to the well until all interests have been consolidated (by communitization, unitization, forced-pooling, or otherwise) or until a non-standard unit, eliminating such interests, has been approved by the Commission.



CERTIFICATION

I hereby certify that the information contained herein is true and complete to the best of my knowledge and belief.

Eddie M. Mahfood
Name

Eddie M. Mahfood

Position

Engineer

Company

Yates Pet. Corporation

Date

4-2-74

RECEIVED LAND SURVEY
I hereby certify that the well location shown on this plat was plotted from field notes of actual surveys made by me or under my supervision, and that the same is true and correct to the best of my knowledge and belief.
JAMES H. BROWN

3-30-74

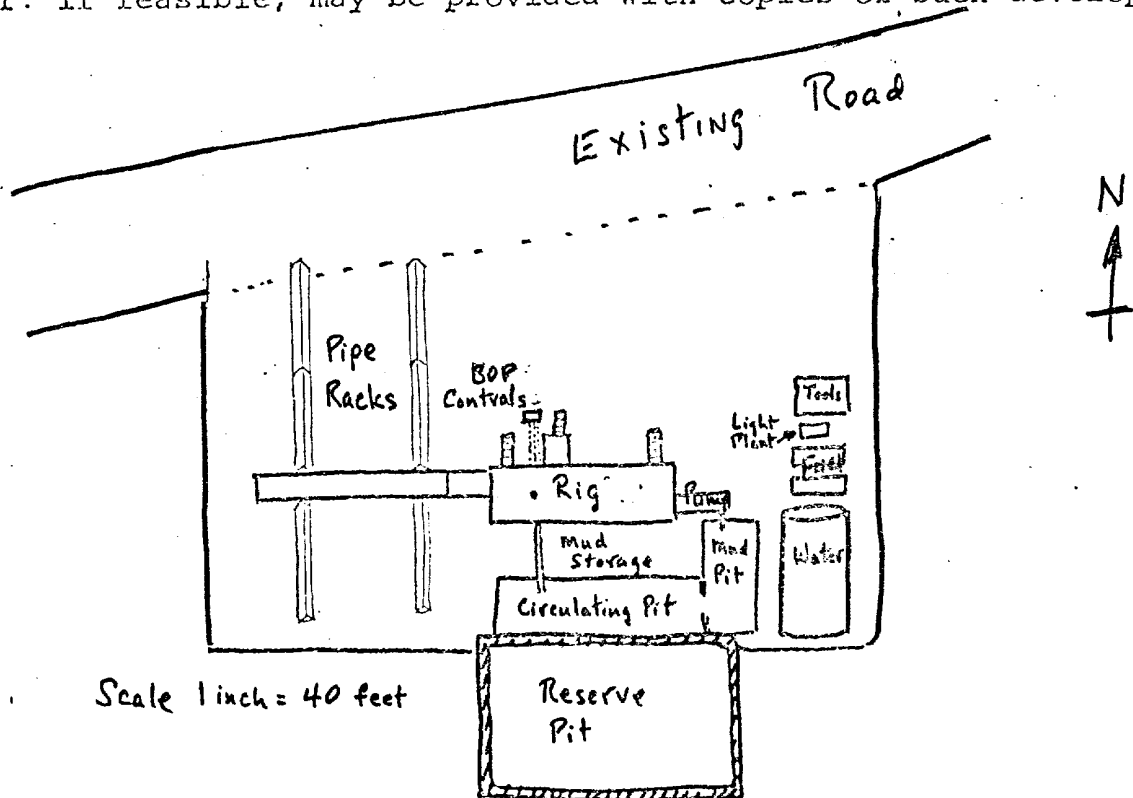
Date Surveyed

Registered Professional Engineer and/or Land Surveyor

James H. Brown
Certificate No. **542**

Development plan for surface use to accompany, "Applications to Drill Onshore Oil, Gas, or Geothermal Steam Wells on Public Domain and acquired Federal Lands:"

1. Existing roads. See Attached Topo Map - Roads are caliche and maintained as needed
 2. Planned access roads. None needed for first well. Will use existing road only. See Attached Topo Map.
 3. Location of wells. See Attached Topo Map - Development well in Eagle Creek San Andres Field
 4. Lateral roads to wells locations. See Attached Topo Map - no lateral roads needed on first well which is located alongside existing road.
 5. Location of tank batteries and flowlines. See Attached Topo Map - tank battery and flowlines alongside existing road.
 6. Locations and types of water supply. Fresh water supply well in Eagle Creek Field; water to be trucked to location on existing roads.
 7. Methods for handling waste disposal. Mud and engine oil in mud pit, trash in trash barrel for subsequent disposal in approved burial dump.
 8. Location of camps NA
 9. Location of airstrips. NA
 10. Location layout to include position of the rig, mud tanks, reserve pits, burn pits, pipe racks, etc. See Sketch below.
 11. Plans for restoration of the surface. Pits to be fenced; dried & leveled upon abandonment, surface restored to near original.
 12. Any other information which the Approving Official considers essential to his assessment of the impact on the environment. Patented surface. Rolling terrain with Praire Grass cactus & tumbleweed. Environment protected to satisfaction of rancher, W.E. McIlhaney, Box 38 Rt. Artesia, NM pho. 746-3034
- The affected Federal and State surface managing agencies shall have access to or, if feasible, may be provided with copies of such development.



Submitted by:

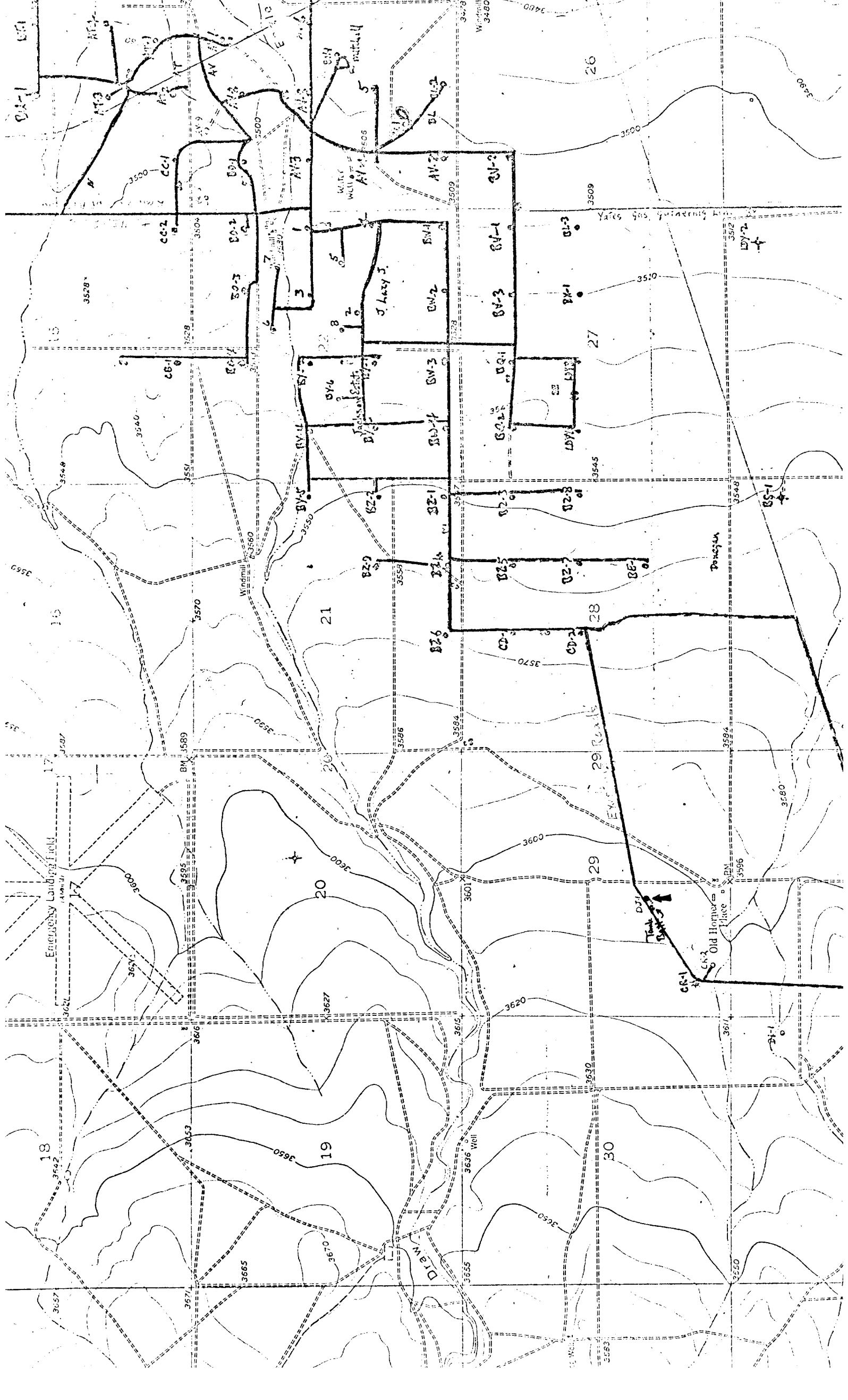
Yates Petroleum Corporation

BY Eddie M. Mahfood
Eddie M. Mahfood - Engineer

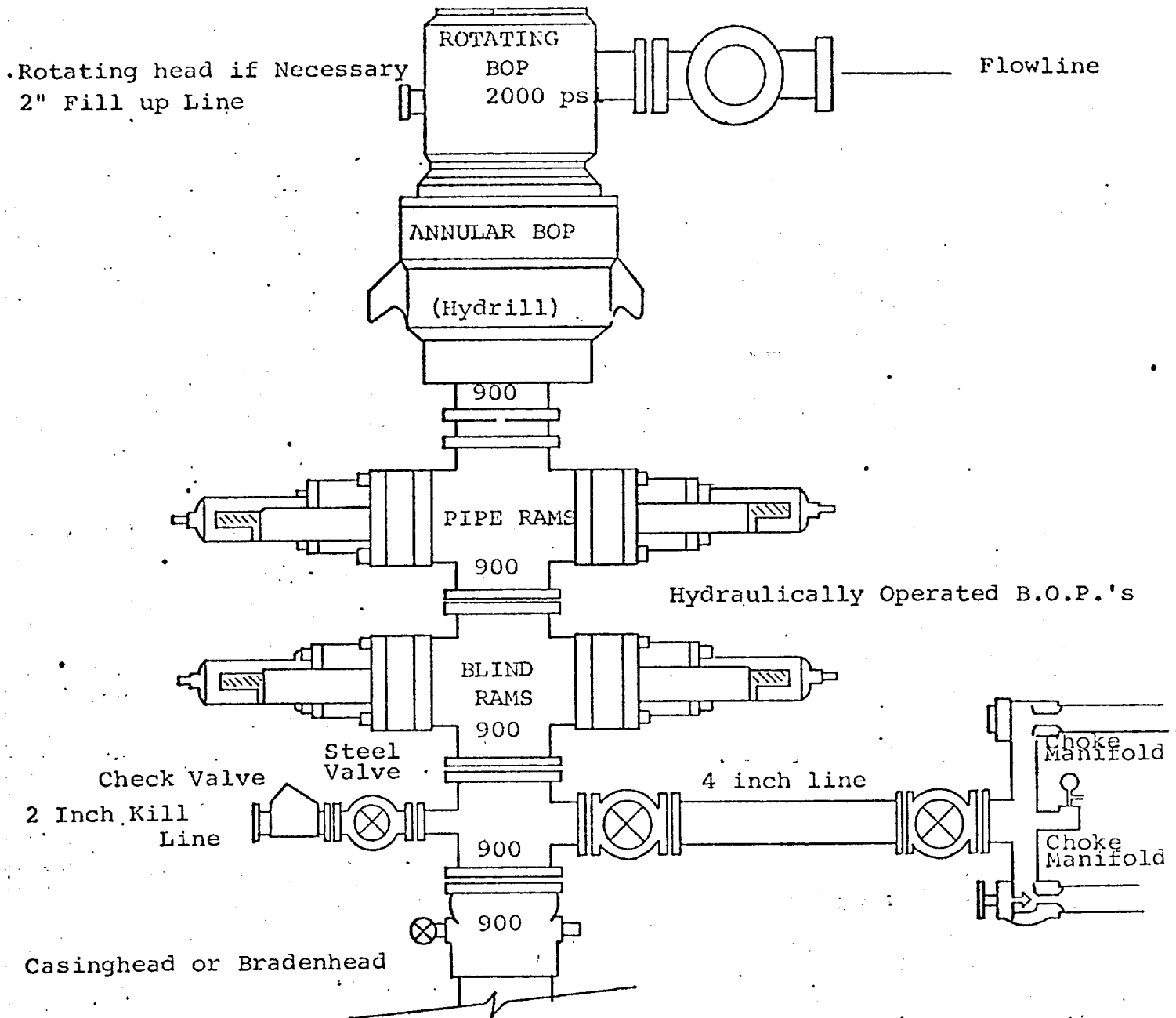
Approved by:

U. S. Geological Survey

BY _____



DIAGRAMMATIC SKETCH OF 3000 PSI BOP ASSEMBLY



THE FOLLOWING CONSTITUTE MINIMUM BLOWOUT PREVENTER REQUIREMENTS

1. All preventers to be hydraulically operated with secondary manual controls installed prior to drilling out from under casing.
2. Choke outlet to be a minimum of 4" diameter.
3. Kill line to be of all steel construction of 2" minimum diameter.
4. All connections from operating manifolds to preventers to be all steel hole or tube a minimum of one inch in diameter.
5. The available closing pressure shall be at least 15% in excess of that required with sufficient volume to operate the B.O.P.'s.
6. All Connections to and from preventer to have a pressure rating equivalent to that of the B.O.P.'s.
7. Inside blowout preventer to be available on rig floor.
8. Operating controls located a safe distance from the rig floor.
9. Hole must be kept filled on trips below intermediate casing. Operator not responsible for blowouts resulting from not keeping hole full.
10. Drill pipe must be installed and used below zone of first gas intrusion.
11. Anticipated Bottom Hole Pressure is less than 400 psi.
12. No Kelly Cock or manual valves necessary.
13. BOP's Tested prior to drilling casing shoe, TD reached estimated 24 hrs.