

UNITED STATES
DEPARTMENT OF THE INTERIOR
GEOLOGICAL SURVEY
PERMIT IN TRIPPLICATE*
(Other instructions on reverse)Form approved:
Budget Bureau No. 42-R1425.

30-015-21185

APPLICATION FOR PERMIT TO DRILL, DEEPEN, OR PLUG BACK

1a. TYPE OF WORK DRILL <input checked="" type="checkbox"/> DEEPEN <input type="checkbox"/> PLUG BACK <input type="checkbox"/>		5. LEASE DESIGNATION AND SERIAL NO. NM 0554195	
b. TYPE OF WELL OIL WELL <input type="checkbox"/> GAS WELL <input checked="" type="checkbox"/> OTHER <input type="checkbox"/>		6. IF INDIAN, ALLOTTEE OR TRIBE NAME	
2. NAME OF OPERATOR El Paso Natural Gas Co.		7. UNIT AGREEMENT NAME Rocky Arroyo	
3. ADDRESS OF OPERATOR 1800 Wilco Building		8. FARM OR LEASE NAME Patterson "B"	
4. LOCATION OF WELL (Report location clearly and in accordance with any State requirements.) At surface 1980 FWL, 860 FNL At proposed prod. zone		9. WELL NO. 1	
14. DISTANCE IN MILES AND DIRECTION FROM NEAREST TOWN OR POST OFFICE* Approximately 30 miles NW of Carlsbad, NM		10. FIELD AND POOL, OR WILDCAT Wildcat Morrow	
15. DISTANCE FROM PROPOSED* LOCATION TO NEAREST PROPERTY OR LEASE LINE, FT. (Also to nearest drilg. unit line, if any) 860'		11. SEC., T., R., M., OR BLK. AND SURVEY OR AREA Sec 29, T-22-S, R-22-E	
16. NO. OF ACRES IN LEASE 1080		12. COUNTY OR PARISH Eddy	
17. NO. OF ACRES ASSIGNED TO THIS WELL 320		13. STATE NM	
18. DISTANCE FROM PROPOSED LOCATION* TO NEAREST WELL, DRILLING, COMPLETED, OR APPLIED FOR, ON THIS LEASE, FT. 1520'		19. PROPOSED DEPTH +9600	
20. ROTARY OR CABLE TOOLS Rotary		21. ELEVATIONS (Show whether DF, RT, GR, etc.) 4489.1 Gr	
22. APPROX. DATE WORK WILL START* 4/23/74			

PROPOSED CASING AND CEMENTING PROGRAM

SIZE OF HOLE	SIZE OF CASING	WEIGHT PER FOOT	SETTING DEPTH	QUANTITY OF CEMENT
12 1/4	9 5/8	36#	2,000'	750 sxs
8 3/7	5 1/2	15.5# & 17#	9,600'	1200 sxs

Plan to drill 12 1/4" hole to 2000', run 9 5/8 csg & cmt to surface. WOC 12 hrs. & test to 1500# for 15 mins. Drill 8 3/4 hole to 9,800'. (DST's may be run on any formation indicating production during this stage of drilling.) Run 5 1/2" csg & cmt to surface. WOC 24 hrs. If production is indicated, complete well in production zone (s) according to rules and regulations of N.M.O.C.C.

It is our understanding that this location is in a "Declared Water Basin". All pipe setting & cementing operations will be done according to the requirements of the proper authorities.

IN ABOVE SPACE DESCRIBE PROPOSED PROGRAM: If proposal is to deepen or plug back, give data on present productive zone and proposed new productive zone. If proposal is to drill or deepen directionally, give pertinent data on subsurface locations and measured and true vertical depths. Give blowout preventer program, if any.

SIGNED

P. O. Kysar

TITLE Production Clerk

DATE 4/10/74

(This space for Federal or State office use)

PERMIT NO.

APPROVED BY

CONDITIONS OF APPROVAL, IF ANY:

SUBJECT TO ATTACHED DEEPWELL CONTROL REQUIREMENTS DATED JUN 22 1973

DECLARED WATER BASIN

*See Instructions On Reverse Side
CEMENT SHALL BE CIRCULATED
CASING MUST BE CIRCULATEDNOTIFY USGS IN SUFFICIENT TIME TO 74
9/8
WATER CEMENTING THE CASINGTHIS APPROVAL IS VALID IF OPERATIONS
ARE NOT COMMENCED WITHIN 3 MONTHS.
EXPIRES JUL 22 1974RECEIVED
APR 22 1974
U.S. GEOLOGICAL SURVEY
APR 24 1974

RECEIVED

APR 11 1994

U.S. DEPARTMENT OF JUSTICE
FEDERAL BUREAU OF INVESTIGATION
WASHINGTON, D.C. 20535

NEW MEXICO OIL CONSERVATION COMMISSION
WELL LOCATION AND ACREAGE DEDICATION PLAT

Form C-102
Supersedes C-128
Effective 1-1-65

All distances must be from the outer boundaries of the Section.

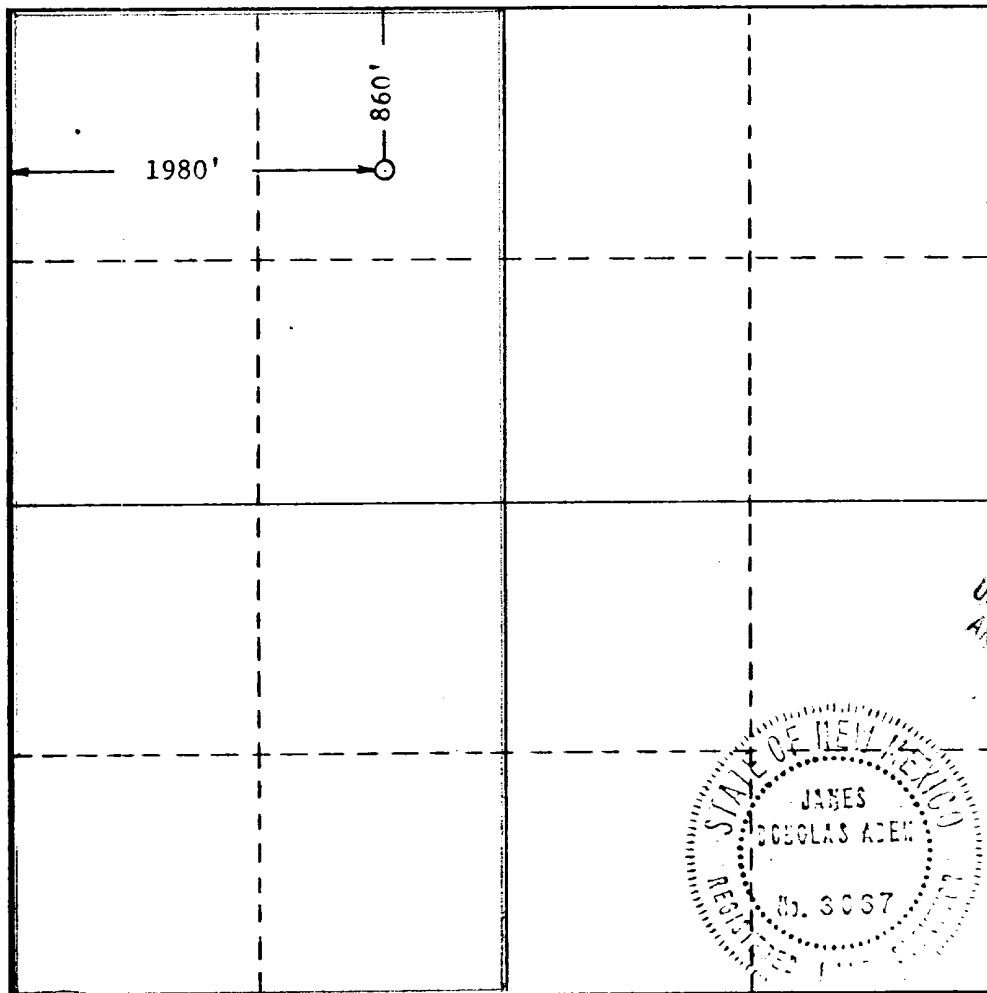
Operator El Paso Natural Gas Company			Lease Patterson "B"		Well No. #1
Unit Letter C	Section 29	Township 22 South	Range 22 East	County Eddy Co.	
Actual Footage Location of Well: 1980 feet from the West line and 860 feet from the North line					
Ground Level Elev. 4489.1	Producing Formation Wildcat	Pool Morrow	Dedicated Acreage: 320 Acres		

1. Outline the acreage dedicated to the subject well by colored pencil or hatchure marks on the plat below.
2. If more than one lease is dedicated to the well, outline each and identify the ownership thereof (both as to working interest and royalty).
3. If more than one lease of different ownership is dedicated to the well, have the interests of all owners been consolidated by communitization, unitization, force-pooling, etc?

☐ Yes ☐ No If answer is "yes," type of consolidation Communitization

If answer is "no," list the owners and tract descriptions which have actually been consolidated. (Use reverse side of this form if necessary.)

No allowable will be assigned to the well until all interests have been consolidated (by communitization, unitization, forced-pooling, or otherwise) or until a non-standard unit, eliminating such interests, has been approved by the Commission.



CERTIFICATION

I hereby certify that the information contained herein is true and complete to the best of my knowledge and belief.

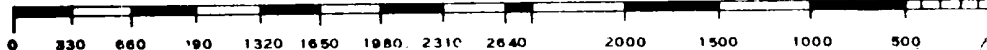
Name
C. D. Kysar
Position
Production Clerk
Company
El Paso Natural Gas Co.
Date
April 10, 1974

I hereby certify that the well location shown on this plat was plotted from field notes of actual surveys made by me or under my supervision and that the same is true and correct to the best of my knowledge and belief.

Date Surveyed
March 22, 1974
Registered Professional Engineer and/or Land Surveyor

[Signature]
Certificate No.

3067



El Paso Natural Gas Co.

Patterson B#1

Sec 29, T-22-S, R-22-E

1. Existing Road - There is an existing road that comes with approximately 1000' of location.
2. Planned Access Road - We plan to build approximately 1000' of new caliche road approximately 16' wide to the location.
3. Well Location - The location will be approximately 300' X 260' compacted caliche with a lined pit. (200' X 150')
4. Lateral Roads - None are planned.
5. Tank Batteries & Flow Line - Will be located on pad if equipment is necessary.
6. Location & Type of Water Supply - We will use the same water well as was used on our other Patterson Well.
7. It is planned to build a Waste Pit - Waste will be buried, burned, and/or hauled from the drill site.
8. Location of Camp - None is planned.
9. Location of Airstrip - None is planned.
10. Diagram of Location - See attached plat.
11. Plans for Restoration of the Surface - Location will be cleaned, leveled, and restored to a condition acceptable to all aurtherized government agencies.

RECEIVED
APR 11 1974
U. S. GEOLOGICAL SURVEY
ARTESIA, NEW MEXICO

El Paso Natural Gas Co.

Patterson B#1

Sec. 29, T-22-S, R-22-E

Suggested Mud Program:

0' - 200': Spud with AQUAGEL flocculated with lime. Treat with cottonseed hulls, FIBERTEX and HYSEAL. If severe loss occurs, blind drill ahead to casing point with water. Spot in hole prior to coming out to run casing, 200 barrels AQUAGEL viscous and treat with cottonseed hulls, HY-SEAL and FIBERTEX. This usually helps when cementing casing.

Surface casing - 13 3/8" at 200'

200' - 2000': Drill out with water and use HY-SEAL for seepage loss of fluid. If severe loss of circulation occurs, drill ahead blind to casing point. If severe loss occurs, spot on bottom prior to coming out to run casing, 300 barrels AQUAGEL viscous mud treated with cottonseed hulls, HY-SEAL and FIBERTEX.

Intermediate casing -- 8 5/8" at 2,000'.

2,000' - 6,500': Drill out with fresh water. Treat with Ben-Ex to reduce solids buildup and treat with lime for a pH of 10.5 to help reduce corrosion. Use HY-SEAL for seepage loss of fluid. At 5,000' add 3% KCl and maintain in system. Possible mud up for DST at 5,400'± depending on hole conditions.

6,500' - 8,800': Mud up at 6,500' or prior to drilling into the lower Wolfcamp porosity. Increase KCl content to 5%. Use soda ash to reduce the hardness below 200 ppm, DEXTRID/DRISPAC to reduce the filter loss at 25cc[±], FLOSAL to increase the viscosity to 32-34 seconds and add 45 PPB of salt (NaCl) or brine water to help stabilize shale and increase the mud weight to 9.0-9.1 ppg. Maintain these properties to 8,800' unless hole conditions warrant a change. Use HY-SEAL for seepage loss of fluid.

8,800' - 9,600': To the existing mud, lower the fluid loss to below 10 cc with DEXTRID/DRISPAC and add .5% KCl to help prevent damage to the Morrow formation. Maintain viscosity 34-36 seconds and mud weight 9.1-9.2 ppg. Use TORQ-TRIM for defoamer and to reduce torque.

This program is designed for maximum hole stability, formation protection, geological data recovery, and penetration.

El Paso Natural Gas Co.

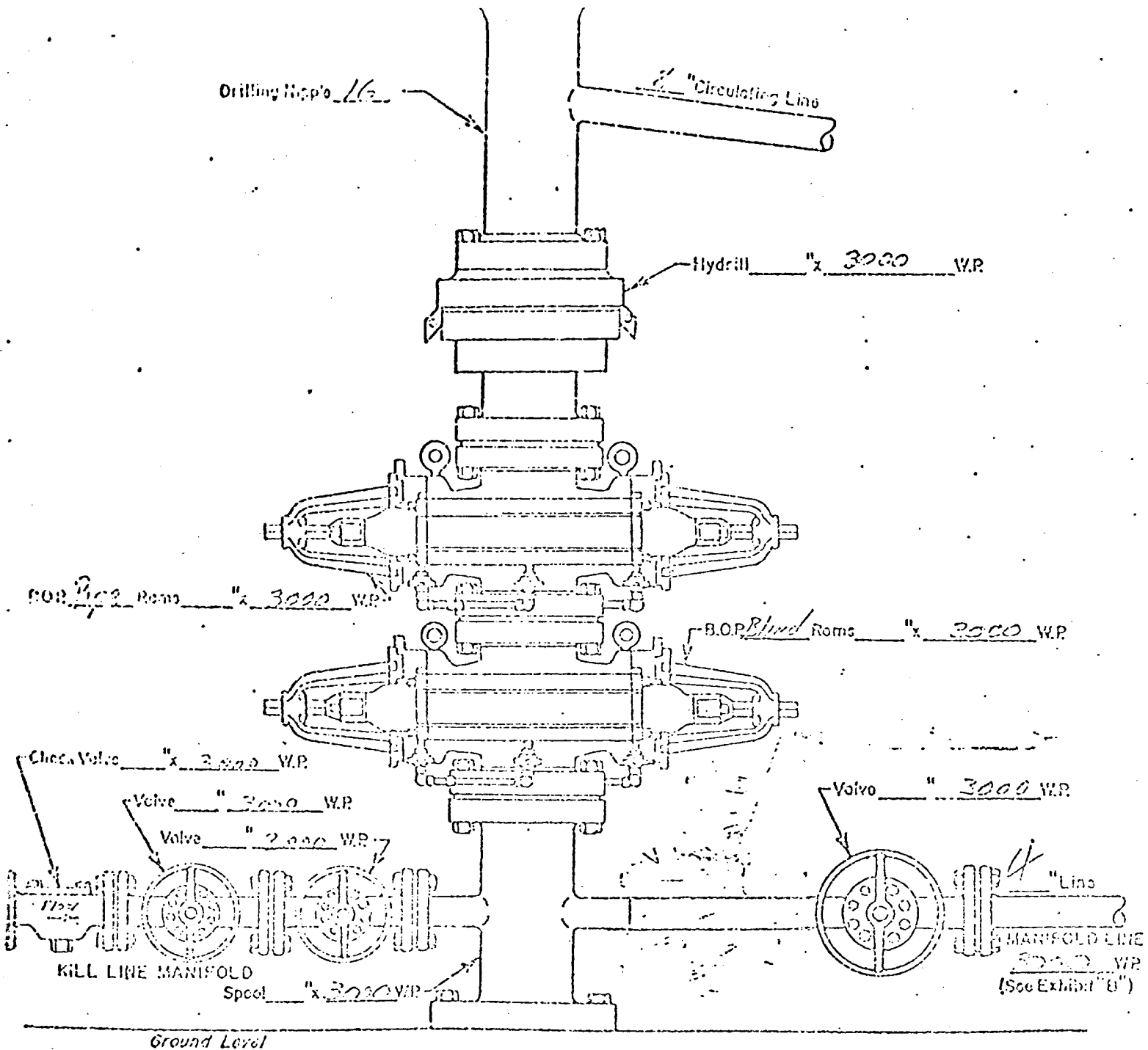
Patterson B#1

Sec. 29, T-22-S, R-22-E

PROPOSED BLOWOUT PREVENTOR PROGRAM

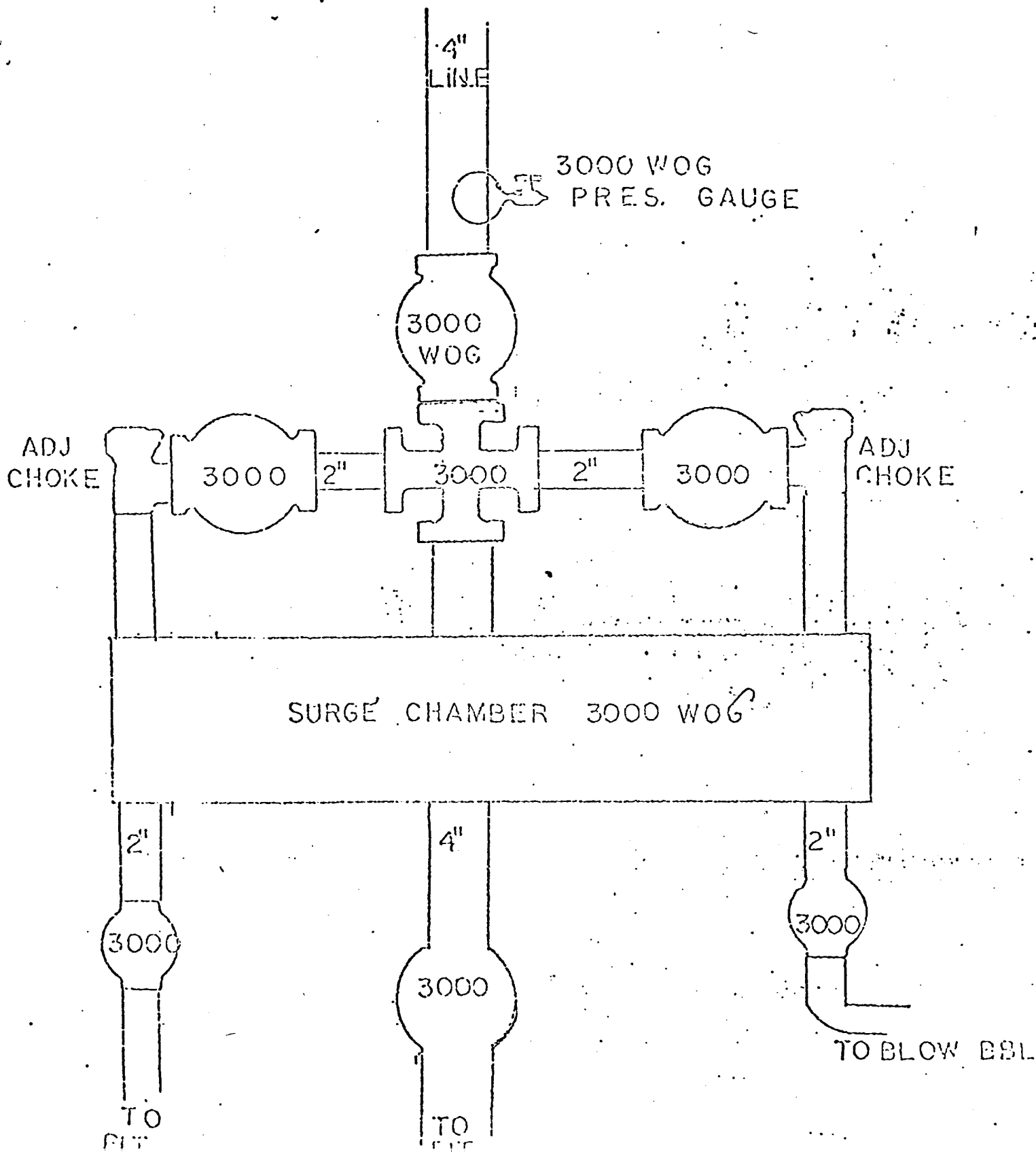
- 1 - on 20" casing, use rotating head tested for 500#.
- 2 - on 13 3/8", use double (pipe rams & blinds) with hydril tested to 3000#.
- 3 - on 9 5/8", use single (pipe rams), single (pipe rams & blinds) with hydril and with rotating head.
TESTED: rotating head - 500#
 hydril - 3000#
 double & single - 3000#

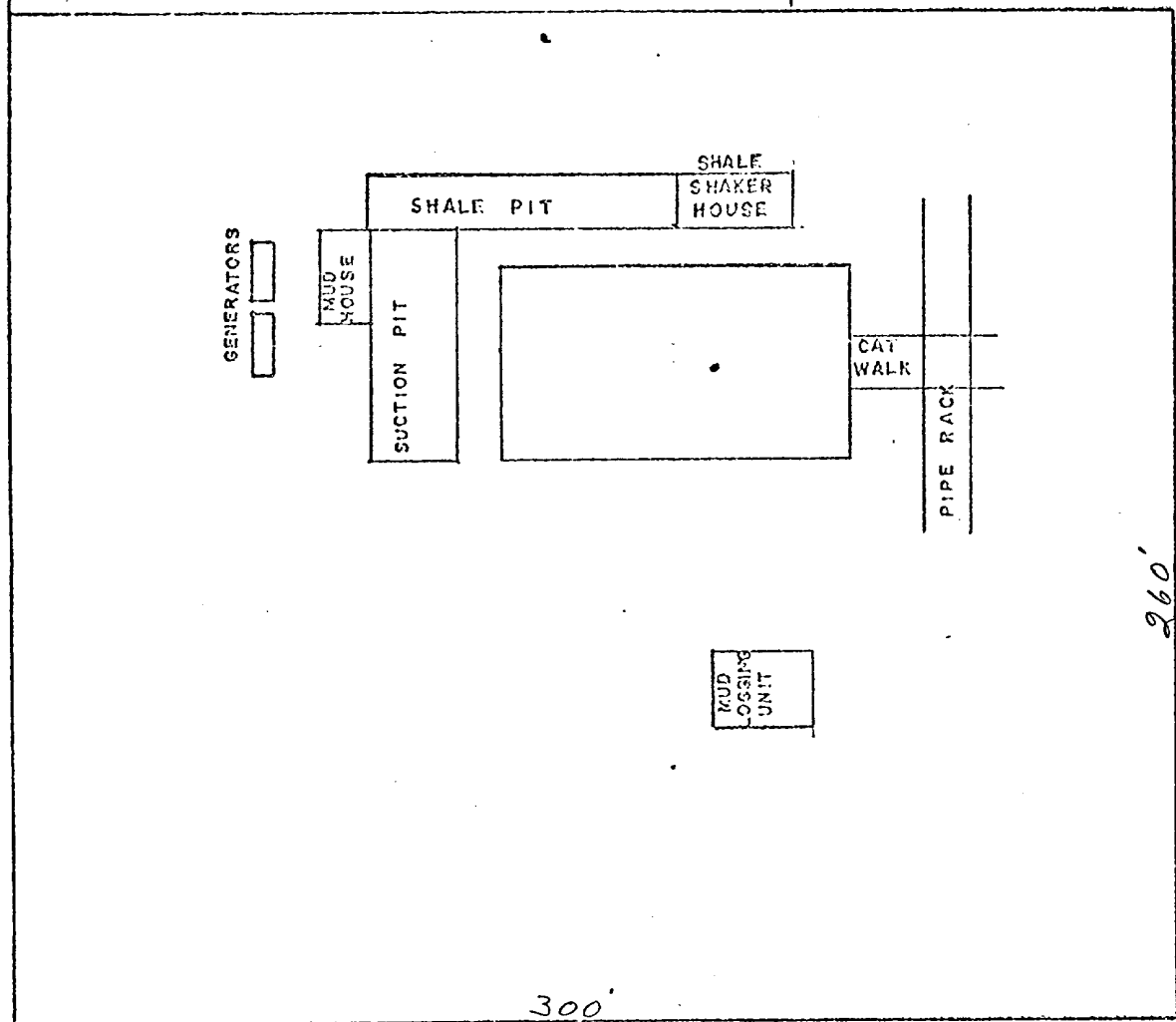
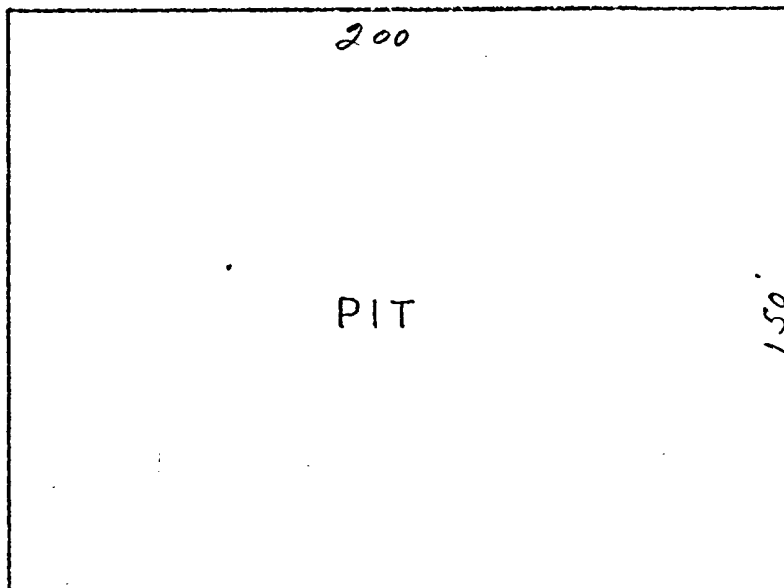
Will have mud separator system, all mainfolding tested to 3000#.



WELL HEAD B.O.P.
3000 # W.P.

☐ Manual.
☒ Hydraulic





UNITED STATES
DEPARTMENT OF THE INTERIOR
GEOLOGICAL SURVEY

