

Corrected copy

N. M. O. C. C. COPY.

Copy & SF

Form 9-331 C
(May 1963)SUBMIT IN T JGATE*
(Other instructions on
reverse side)Form approved.
Budget Bureau No. 42-R1425.UNITED STATES
DEPARTMENT OF THE INTERIOR
GEOLOGICAL SURVEY**AMENDED**

APPLICATION FOR PERMIT TO DRILL, DEEPEN, OR PLUG BACK

1a. TYPE OF WORK

DRILL ☒DEEPEN ☐PLUG BACK ☐

b. TYPE OF WELL

OIL
WELL ☐GAS
WELL ☒

OTHER

SINGLE
ZONE ☐MULTIPLE
ZONE ☐

2. NAME OF OPERATOR

El Paso Natural Gas Company

RECEIVED

3. ADDRESS OF OPERATOR

1800 Wilco Building, Midland, Texas

4. LOCATION OF WELL (Report location clearly and in accordance with any State requirements.)

At surface

1980' FWL, 860' FNL

At proposed prod. zone

O. C. F
ARTESIA

14. DISTANCE IN MILES AND DIRECTION FROM NEAREST TOWN OR POST OFFICE*

Approximately 30 miles NW of Carlsbad, N. M.

15. DISTANCE FROM PROPOSED*

LOCATION TO NEAREST

PROPERTY OR LEASE LINE, FT.

(Also to nearest drlg. unit line, if any)

860'

16. NO. OF ACRES IN LEASE

1080

17. NO. OF ACRES ASSIGNED
TO THIS WELL

160

18. DISTANCE FROM PROPOSED LOCATION*

TO NEAREST WELL, DRILLING, COMPLETED,
OR APPLIED FOR, ON THIS LEASE, FT.

1520'

19. PROPOSED DEPTH

6200'

20. ROTARY OR CABLE TOOLS

Rotary

21. ELEVATIONS (Show whether DF, RT, GR, etc.)

4489.1 Gr

22. APPROX. DATE WORK WILL START*

4/23/74

23.

PROPOSED CASING AND CEMENTING PROGRAM

SIZE OF HOLE	SIZE OF CASING	WEIGHT PER FOOT	SETTING DEPTH	QUANTITY OF CEMENT
12 1/4"	9 5/8"	36#	2,000'	750 sxS
8 3/4"	5 1/2"	15.5# & 17#	6,200'	1200 sxS

Plan to drill 12 1/4" hole to 2000', run 9 5/8" csg & cmt to surface. WOC 12 hrs. & test to 1500# for 15 minutes. Drill 8 3/4" hole to 6,200' (DST's may be run on any formation indicating production during this stage of drilling.) Run 5 1/2" csg & cmt to surface. WOC 24 hrs. If production is indicated, complete well in production zone (s) according to rules and regulations of N.M.O.C.C.

It is our understanding that this location is in a "Declared Water Basin". All pipe setting and cementing operations will be done according to the requirements of the proper authorities.

*changed PD from 9600'
to 6200' we*

RECEIVED

APR 26 1974

U. S. GEOLOGICAL SURVEY
ARTESIA, NEW MEXICO

IN ABOVE SPACE DESCRIBE PROPOSED PROGRAM: If proposal is to deepen or plug back, give data on present productive zone and proposed new productive zone. If proposal is to drill or deepen directionally, give pertinent data on subsurface locations and measured and true vertical depths. Give blowout preventer program, if any.

24.

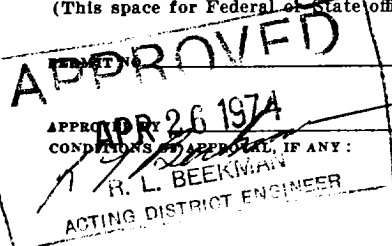
SIGNED

C. D. Kysar

TITLE Production Clerk

DATE 4/25/74

(This space for Federal or State office use)



APPROVAL DATE

TITLE

DATE

*See Instructions On Reverse Side

NEW MEXICO OIL CONSERVATION COMMISSION
WELL LOCATION AND ACREAGE DEDICATION PLAT

Form C-102
Supersedes C-128
Effective 1-1-65

All distances must be from the outer boundaries of the Section.

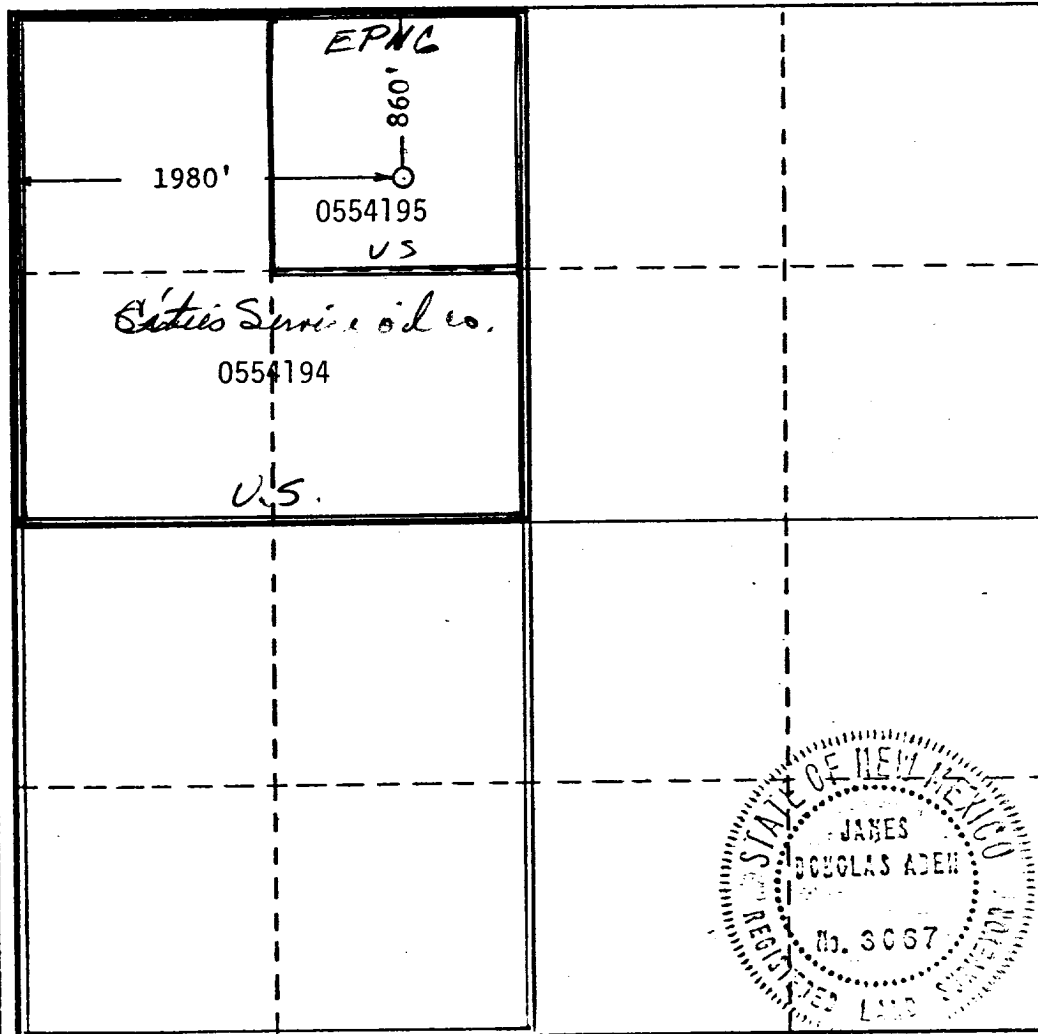
Operator El Paso Natural Gas Company			Lease Patterson "B"		Well No. #1
Unit Letter C	Section 29	Township 22 South	Range 22 East	County Eddy Co.	
Actual Footage Location of Well: 1980 feet from the West line and 860 feet from the North line					
Ground Level Elev. 4489.1	Producing Formation Wildcat	Pool Wolfcamp		Dedicated Acreage: 160 Acres	

1. Outline the acreage dedicated to the subject well by colored pencil or hachure marks on the plat below.
2. If more than one lease is dedicated to the well, outline each and identify the ownership thereof (both as to working interest and royalty).
3. If more than one lease of different ownership is dedicated to the well, have the interests of all owners been consolidated by communitization, unitization, force-pooling, etc?

☐ Yes ☐ No If answer is "yes," type of consolidation Communitization (Pending)

If answer is "no," list the owners and tract descriptions which have actually been consolidated. (Use reverse side of this form if necessary.)

No allowable will be assigned to the well until all interests have been consolidated (by communitization, unitization, forced-pooling, or otherwise) or until a non-standard unit, eliminating such interests, has been approved by the Commission.



RECEIVED
CERTIFICATION

APR 26 1974
I hereby certify that the information contained herein is true and complete to the best of my knowledge and belief.
U.S. GEOLOGICAL SURVEY
ARTESIA, NEW MEXICO

Name
C. D. Kysar C. D. Kysar

Position
Production Clerk

Company
El Paso Natural Gas Co.

Date
April 10, 1974

RECEIVED
APR 17 1974
I hereby certify that the well location shown on this plat was plotted from field notes of actual surveys made by me or under my supervision, and that the same is true and correct to the best of my knowledge and belief.
U.S. GEOLOGICAL SURVEY
ARTESIA, NEW MEXICO

Date Surveyed
March 22, 1974

Registered Professional Engineer and/or Land Surveyor

J. D. Aden
Certificate No.

3067

0 330 660 990 1320 1650 1980 2310 2640 2000 1500 1000 500 0