

UNITED STATES  
DEPARTMENT OF THE INTERIOR  
GEOLOGICAL SURVEY

30-015-21232

## APPLICATION FOR PERMIT TO DRILL, DEEPEN, OR PLUG BACK

## 1a. TYPE OF WORK

DRILL ☒DEEPEN ☐PLUG BACK ☐

## b. TYPE OF WELL

OIL  
WELL ☒GAS  
WELL ☐OTHER ☐SINGLE  
ZONE ☐MULTIPLE  
ZONE ☐

## 2. NAME OF OPERATOR

McCLELLAN OIL CORPORATION ✓

RECEIVED

## 3. ADDRESS OF OPERATOR

P. O. Box 848, ROSWELL, NEW MEXICO 88201

MAY 31 1974

## 4. LOCATION OF WELL (Report location clearly and in accordance with any State requirements.)\*

At surface

660' FSL &amp; 1980' FEL

O. C. C.  
ARTESIA, OFFICE

## 5. LEASE DESIGNATION AND SERIAL NO.

NM-0553791

## 6. IF INDIAN, ALLOTTEE OR TRIBE NAME

## 7. UNIT AGREEMENT NAME

## 8. FARM OR LEASE NAME

AYUDAR FEDERAL

## 9. WELL NO.

1

## 10. FIELD AND POOL, OR WILDCAT

WILDCAT

11. SEC., T., R., M., OR BLK.  
AND SURVEY OR AREA

SEC. 13-T23S-R28E

## 12. COUNTY OR PARISH

EDDY

## 13. STATE

NEW MEXICO

## 14. DISTANCE IN MILES AND DIRECTION FROM NEAREST TOWN OR POST OFFICE\*

4 1/2 MILES NORTHEAST OF LOVING, NEW MEXICO

## 15. DISTANCE FROM PROPOSED\*

LOCATION TO NEAREST  
PROPERTY OR LEASE LINE, FT.  
(Also to nearest drlg. unit line, if any)

660'

## 16. NO. OF ACRES IN LEASE

160

17. NO. OF ACRES ASSIGNED  
TO THIS WELL

40

## 18. DISTANCE FROM PROPOSED LOCATION\*

TO NEAREST WELL, DRILLING, COMPLETED,  
OR APPLIED FOR, ON THIS LEASE, FT.

NONE

## 19. PROPOSED DEPTH

3000'

## 20. ROTARY OR CABLE TOOLS

CABLE TOOL

## 21. ELEVATIONS (Show whether DF, RT, GR, etc.)

2967.2' GR

## 22. APPROX. DATE WORK WILL START\*

MAY 25, 1974

## 23.

## PROPOSED CASING AND CEMENTING PROGRAM

SIZE OF HOLE	SIZE OF CASING	WEIGHT PER FOOT	SETTING DEPTH	QUANTITY OF CEMENT
12 1/4"	8-5/8"	24#	250'	100 SX (CIRC)
7-7/8"	5-1/2"	15#	3000'	300 SX

PROPOSE TO DRILL TO A DEPTH OF APPROXIMATELY 3000' TO TEST THE LOVINGTON SAND.

RECEIVED  
U. S. GEOLOGICAL SURVEY  
ARTESIA, NEW MEXICO

IN ABOVE SPACE DESCRIBE PROPOSED PROGRAM: If proposal is to deepen or plug back, give data on present productive zone and proposed new productive zone. If proposal is to drill or deepen directionally, give pertinent data on subsurface locations and measured and true vertical depths. Give blowout preventer program, if any.

## 24.

SIGNED

Jack L. McClellan

TITLE

OPERATOR

DATE

MAY 14, 1974

(This space for Federal or State office use)

PERMIT NO.

APPROVAL DATE MAY 28 1974

APPROVED BY

J. A. R. R.

TITLE

DISTRICT ENGINEER

DATE

CONDITIONS OF APPROVAL, IF ANY:

DECLARED WATER BASIN  
CEMENT BEHIND  
CASING MUST BE CIRCULATED

\*See Instructions On Reverse Side

**N MEXICO OIL CONSERVATION COMMISS**  
**WELL LOCATION AND ACREAGE DEDICATION PLAT**

Form C-102  
 Supersedes C-128  
 Effective 1-1-65

All distances must be from the outer boundaries of the Section

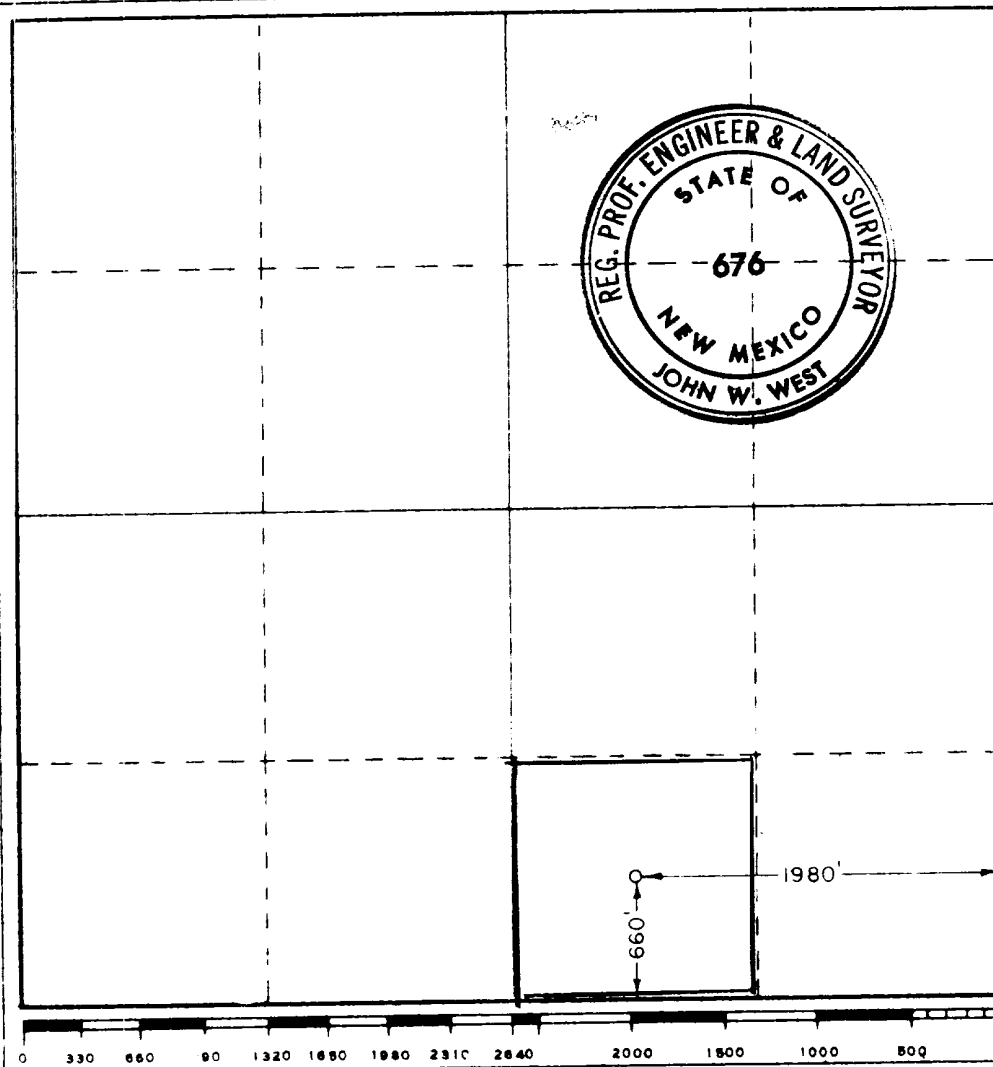
Operator <b>McCLELLAN OIL CORPORATION</b>			Lease <b>AYUDAR FEDERAL</b>		Well No. <b>1</b>
Unit Letter <b>O</b>	Section <b>13</b>	Township <b>23 SOUTH</b>	Range <b>28 EAST</b>	County <b>EDDY</b>	
Actual Footage Location of Well: <b>660</b> feet from the <b>SOUTH</b> line and <b>1980</b> feet from the <b>EAST</b> line					
Ground Level Elev. <b>2967.2</b>	Producing Formation <b>DELAWARE SAND</b>		Pool <b>WILDCAT</b>	Dedicated Acreage: <b>40</b>	

- Outline the acreage dedicated to the subject well by colored pencil or hachure marks on the plat below.
- If more than one lease is dedicated to the well, outline each and identify the ownership thereof (both as to working interest and royalty).
- If more than one lease of different ownership is dedicated to the well, have the interests of all owners been consolidated by communitization, unitization, force-pooling, etc?

☐ Yes ☐ No If answer is "yes," type of consolidation \_\_\_\_\_

If answer is "no," list the owners and tract descriptions which have actually been consolidated. (Use reverse side of this form if necessary.) \_\_\_\_\_

No allowable will be assigned to the well until all interests have been consolidated (by communitization, unitization, forced-pooling, or otherwise) or until a non-standard unit, eliminating such interests, has been approved by the Commission.



**CERTIFICATION**

I hereby certify that the information contained herein is true and complete to the best of my knowledge and belief.

*Jack L. McClellan*  
 Name  
**JACK L. McCLELLAN**

Position  
**OPERATOR**

Company  
**McCLELLAN OIL CORP.**

Date  
**MAY 14, 1974**

**RECEIVED**  
 MAY 15 1974  
 U.S. GEOLOGICAL SURVEY  
 ALBUQUERQUE, NEW MEXICO

I hereby certify that the well location shown on this plat was verified from field notes or actual surveys made for or under my supervision, and that the same is true and correct to the best of my knowledge and belief.

Date Surveyed  
**MAY 11, 1974**

Registered Professional Engineer and/or Land Surveyor

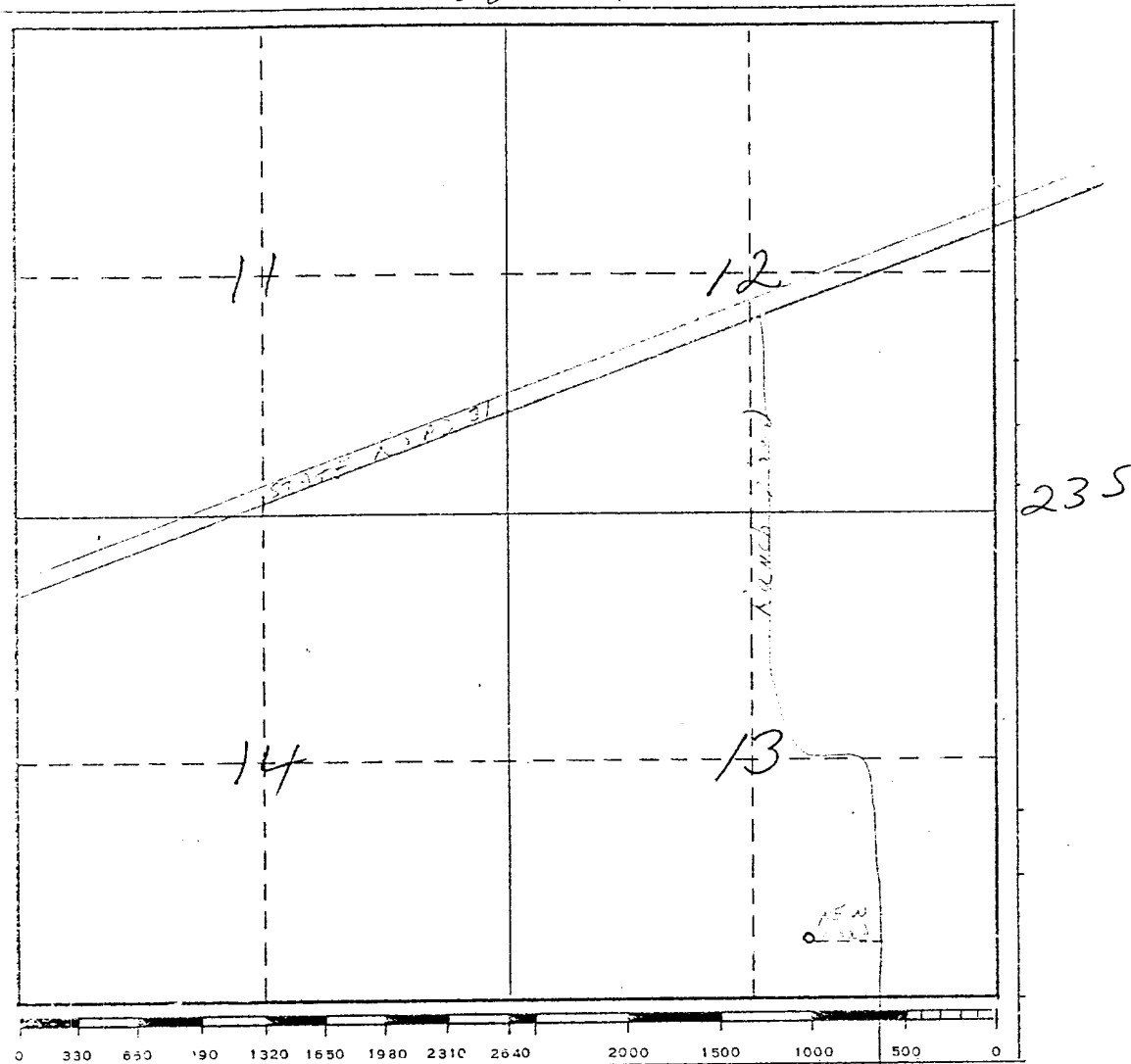
*John W. West*  
 Certificate No. **676**

JME

SCLELLAN OIL CORPORATION  
Box 849  
ROSWELL, NEW MEXICO 88201

AYUDAR FEDERAL No. 1  
660' FSL, 1980' FEL  
SECTION 13-T23S-R28E

28E



PROPOSE TO USE EXISTING RANCH ROAD AND CONSTRUCT APPROXIMATELY 400' OF NEW ROAD. THERE IS NO WATER ON LOCATION AND DRILLING WATER WILL BE TRUCKED. COMBUSTIBLE MATERIAL WILL BE BURNED, NON-COMBUSTIBLE MATERIAL WILL BE BURIED WITH PIT FILLING.

AFTER COMPLETION OR ABANDONMENT, THE PIT WILL BE FILLED AND THE LOCATION CLEANED.

RECEIVED  
MAY 15 1974  
U.S. GEOLOGICAL SURVEY  
ARTESIA, NEW MEXICO

