

Form 9-331 C
(May 1963)SUBMIT IN 1 ICATE*
(Other instructions on
reverse side)Form approved.
Budget Bureau No. 42-11425.UNITED STATES
DEPARTMENT OF THE INTERIOR
GEOLOGICAL SURVEY

APPLICATION FOR PERMIT TO DRILL, DEEPEN, OR PLUG BACK

1a. TYPE OF WORK

DRILL ☒DEEPEN ☐PLUG BACK ☐

b. TYPE OF WELL

OIL
WELL ☐GAS
WELL ☒

OTHER

SINGLE
ZONE ☐MULTIPLE
ZONE ☐

2. NAME OF OPERATOR

BLACK RIVER CORPORATION ✓

3. ADDRESS OF OPERATOR

620 Commercial Bank Tower Midland, Texas 79701

4. LOCATION OF WELL (Report location clearly and in accordance with any State requirements)

At surface

990' FSL 660' FWL Section 34

At proposed prod. zone

14. DISTANCE IN MILES AND DIRECTION FROM NEAREST TOWN OR POST OFFICE*

Approximately 12 miles Southwest White's City, New Mexico

15. DISTANCE FROM PROPOSED*

LOCATION TO NEAREST

PROPERTY OR LEASE LINE, FT.

(Also to nearest drilg. unit line, if any)

1250'

16. NO. OF ACRES IN LEASE

2540.03

18. DISTANCE FROM PROPOSED LOCATION*

TO NEAREST WELL, DRILLING, COMPLETED,
OR APPLIED FOR, ON THIS LEASE, FT.

2640'

19. PROPOSED DEPTH

1750' (Delaware)

17. NO. OF ACRES ASSIGNED
TO THIS WELL

160

20. ROTARY OR CABLE TOOLS

Rotary

21. ELEVATIONS (Show whether DF, RT, GR, etc.)

342.7 GR 3742.7

22. APPROX. DATE WORK WILL START*

July 1, 1974

23.

PROPOSED CASING AND CEMENTING PROGRAM

SIZE OF HOLE	SIZE OF CASING	WEIGHT PER FOOT	SETTING DEPTH	QUANTITY OF CEMENT
11"	9-5/8"	30	300'	100 sx
8-3/4"	7"	23	1,300	200 sx

We propose to drill an 11" hole to approximately 300'. After setting 9-5/8" casing and circulating cement to surface will then W.O.C. a minimum of twenty four (24) hours. From this point will drill an 8-3/4" hole to 1300' with fresh water. At 1300' 7" casing will be run and cement sufficient to return to 50' above top of the Delaware. After W.O.C. twenty four (24) hours, then gas drill to T.D.

IN ABOVE SPACE DESCRIBE PROPOSED PROGRAM: If proposal is to deepen or plug back, give data on present productive zone and proposed new productive zone. If proposal is to drill or deepen directionally, give pertinent data on subsurface locations and measured and true vertical depths. Give blowout preventer program, if any.

24.

SIGNED

Ronnie Saunders

TITLE

Vice President

DATE

May 23, 1974

(This space for Federal or State office use)

PERMIT NO.

APPROVAL DATE

JUN 11 1974

APPROVED BY

CONDITIONS OF APPROVAL, IF ANY:

TITLE

DISTRICT ENGINEER

DATE

THIS APPROVAL IS RESCINDED IF OPERATIONS
ARE NOT COMPLETED WITHIN 3 MONTHS.

*See Instructions On Reverse Side

NEW MEXICO OIL CONSERVATION COMMISSION
WELL LOCATION AND ACREAGE DEDICATION PLAT

Form O-10,
Supersedes O-12a
Effective 1-1-65

All distances must be from the outer boundaries of the Section

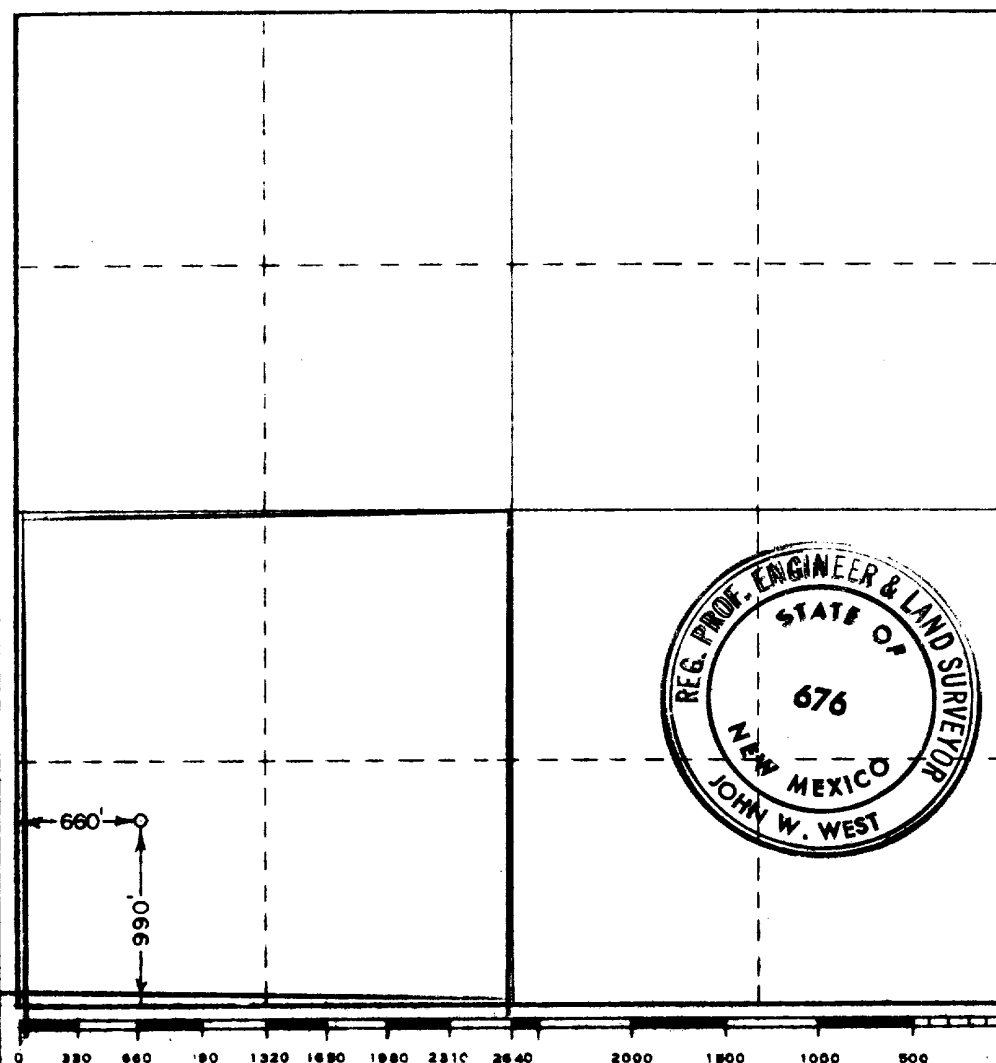
Operator BLACK RIVER CORP.			Lease Cities Federal			Well No. 5
Grid Letter M	Section 34	Township 25 South	Range 24 East	County Eddy		
Actual Footage Location of Well: 990 feet from the South line and 660 feet from the West line						
Ground Level Elev. 3742.7	Producing Formation DELAWARE		Pool Ind. Washita Ranch Sub.	Dedicated Acreage 160		

1. Outline the acreage dedicated to the subject well by colored pencil or hachure marks on the plat below
2. If more than one lease is dedicated to the well, outline each and identify the ownership thereof (both as to working interest and royalty).
3. If more than one lease of different ownership is dedicated to the well, have the interests of all owners been consolidated by communitization, unitization, force-pooling, etc?

☐ Yes ☐ No If answer is "yes," type of consolidation _____

If answer is "no," list the owners and tract descriptions which have actually been consolidated. (Use reverse side of this form if necessary.) _____

No allowable will be assigned to the well until all interests have been consolidated (by communitization, unitization, forced-pooling, or otherwise) or until a non-standard unit, eliminating such interests, has been approved by the Commission.



CERTIFICATION

I hereby certify that the information contained herein is true and complete to the best of my knowledge and belief.

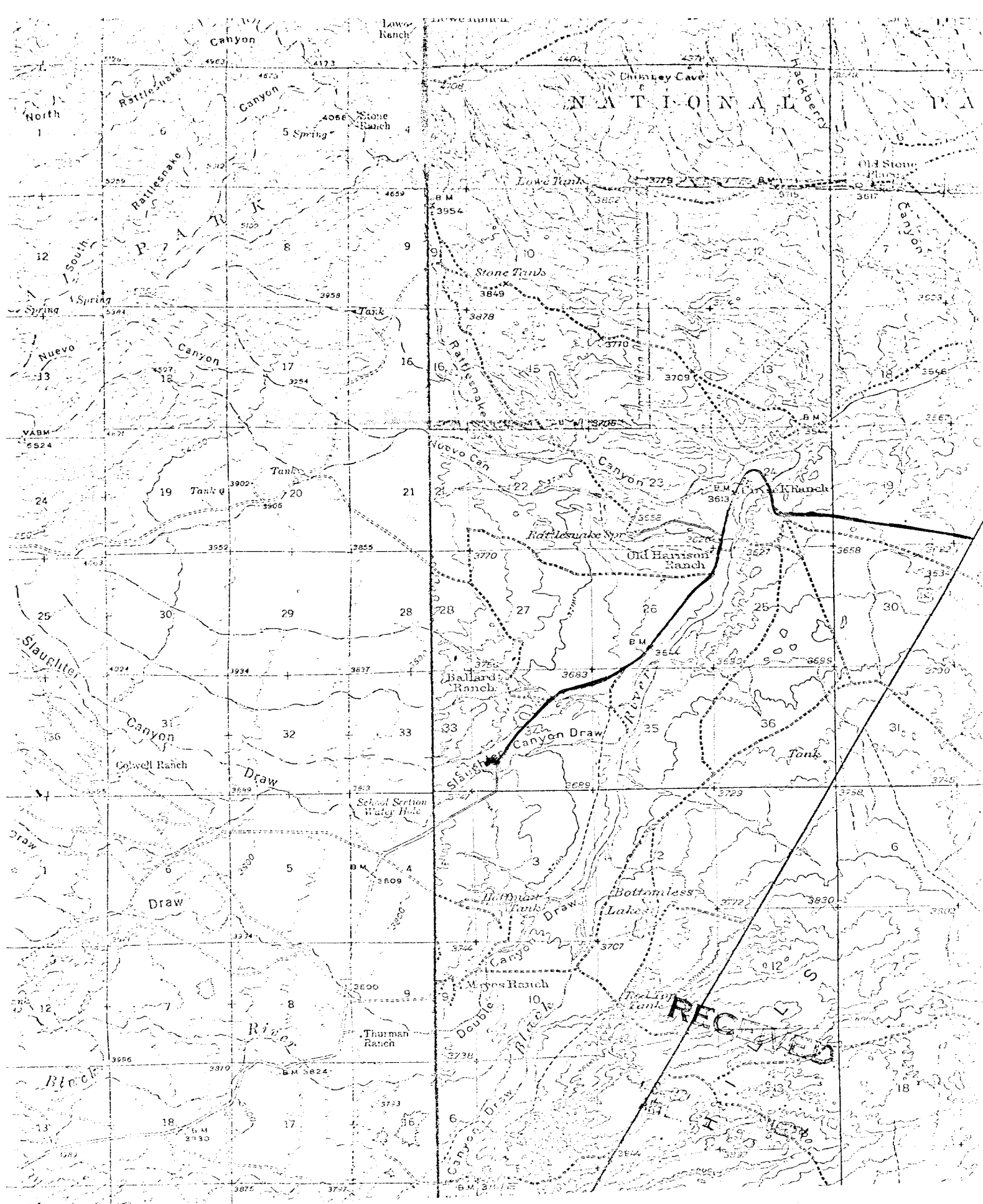
Name
Rosine Towler
Position
Vice President
Company
BLACK RIVER CORPORATION
Date
5-21-74

RECEIVED
I hereby certify that the well location shown on this plat was plotted from field notes of May 11, 1974 surveys made by me or under my supervision, and that the same is correct to the best of my knowledge and belief.
U.S. GEOLOGICAL SURVEY
ARTESIA, NEW MEXICO

Date Surveyed
May 11, 1974

Registered Professional Engineer and/or Land Surveyor

John W. West
Certificate No.
676



BLACK RIVER CORPORATION
 Surface Use Development Plan
 Well - Cities Federal Plan
 Date - July 1, 1974

From the existing road at approximately 960' from the west line of the SW/4 of Section 34 we propose to build an access road in a westerly direction to the proposed location. Length 300' width 10'. Road will be cleared to allow passage and compacted if necessary.

990' FSL 660' FWL Section 34:
 T-25-S, R-24-E,
 Eddy County, New Mexico

If productive, tank battery and flow line will be located on drilling pad.

Drilling water will be hauled to location. No camps or airstrips.

After completion, location and pits will be leveled and filled. Topsoil where available will be restored to the surface.

The Cuttings Trench will be utilized for trash disposal.

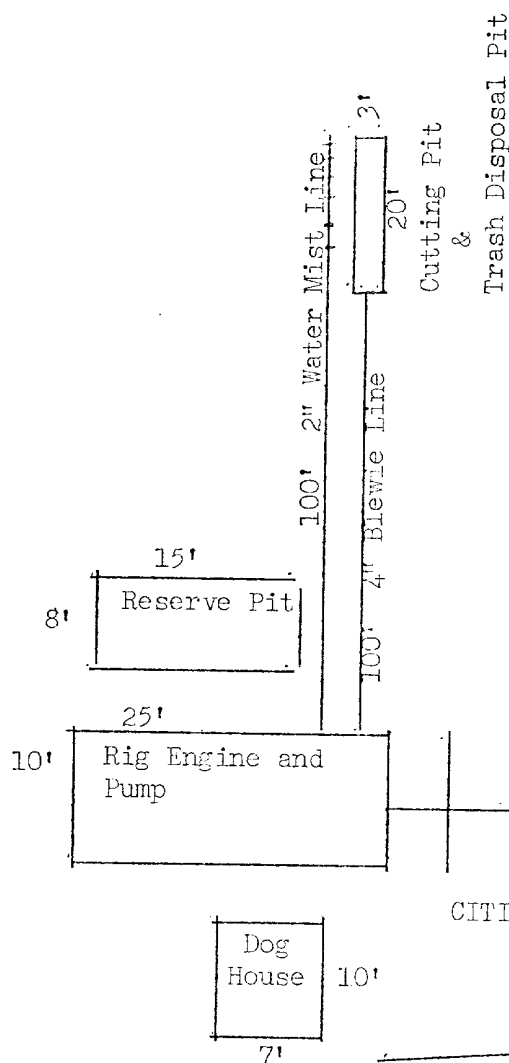
See attached sheet for Rig Layout.

N

CITIES FEDERAL #2



CITIES FEDERAL #5
is approximately
2640' SW of Cities Federal
#2



CITIES FEDERAL #4

300' Access Road

BLACK RIVER CORPORATION
Surface Use Development Plan
Well - Cities Federal No. 5
Date - July 1, 1974

990' FSL 600' FWL Section 34
T-24-S, R-24-E, Eddy County, New Mexico

RECEIVED

U.S. CITY
APPROVED