

NO. OF COPIES RECEIVED	6
DISTRIBUTION	
SANTA FE	1
FILE	1
U.S.G.S.	2
LAND OFFICE	1
OPERATOR	1

NEW MEXICO OIL CONSERVATION COMMISSION
RECEIVED

SEP 12 1974

30-015-21363
Form C-101
Revised 1-4-65

5A. Indicate Type of Lease	
STATE <input checked="" type="checkbox"/>	FEE <input type="checkbox"/>
5. State Oil & Gas Lease No.	
K-6391	

APPLICATION FOR PERMIT TO DRILL, DEEPEN, OR PLUG BACK

1a. Type of Work		DRILL <input checked="" type="checkbox"/> DEEPEN <input type="checkbox"/> PLUG BACK <input type="checkbox"/>	
b. Type of Well		OIL WELL <input checked="" type="checkbox"/> GAS WELL <input type="checkbox"/> OTHER <input type="checkbox"/>	
2. Name of Operator		Yates Petroleum Corporation	
3. Address of Operator		207 South 4th Street, Artesia, N.M. 88210	
4. Location of Well		UNIT LETTER E LOCATED 1980 FEET FROM THE North LINE	
AND 660 FEET FROM THE West LINE OF SEC. 16 TWP. 19S RGE. 24E NMPM			
7. Unit Agreement Name			
8. Firm or Lease Name		State Oil Co.	
9. Well No.		1	
10. Field and Pool, or Wildcat		W. Murriel	
12. County		Eddy	
19. Proposed Depth		Approx 8900	
19A. Formation		Morrow	
20. Rotary or C.T.		Rotary	
21. Elevations (Show whether DF, RT, etc.)		3735 LR	
21A. Kind & Status Plug. Bond		Blanket	
21B. Drilling Contractor		Ard Drilling Co.	
22. Approx. Date Work will start		When approved	

PROPOSED CASING AND CEMENT PROGRAM

SIZE OF HOLE	SIZE OF CASING	WEIGHT PER FOOT	SETTING DEPTH	SACKS OF CEMENT	EST. TOP
17 1/2"	13-3/4" (12-3/4")	48# 36#	Approx 200'	Circulate	
12 1/4"	8-5/8"	24#	" 900'	Circulate	
7-7/8"	5 1/2" or 4 1/2"	15.5-17# or 9.5-11.6#	" 8900'	250 24	

It is our intention to drill to approx 8900', approx 200' of 13-3/4" or 12 3/4" casing will be run & cement circulated. Intermediate 8-5/8" casing will be set 100' below the Artesian zone & cement circulated. If production is encountered 5 1/2" or 4 1/2" casing will be run, perforated & stimulate, if needed, for production.

Mud Program: - Gel + bulls from surface to 900'; FW 900-4500; 290 KCL 4500-5900; Floxal + Drisapak 5900-TD.

BOP Program: - BOP's will be installed on 8-5/8" casing. Pipe rams will be tested daily, blind ram for 90 DAYS UNLESS, APPROVAL VALID FOR 90 DAYS UNLESS, DRILLING COMMENCED,

IN ABOVE SPACE DESCRIBE PROPOSED PROGRAM: IF PROPOSAL IS TO DEEPEN OR PLUG BACK, GIVE DATA ON PRESENT PRODUCTIVE ZONE AND PROPOSED NEW PRODUCTIVE ZONE. GIVE BLOWOUT PREVENTER PROGRAM, IF ANY.

I hereby certify that the information above is true and complete to the best of my knowledge and belief.

Signed Eddie H. Hainford Title Engineer Date 9-12-74

(This space for State Use)

APPROVED BY W. A. Grissett TITLE OIL AND GAS INSPECTOR DATE SEP 13 1974

CONDITIONS OF APPROVAL, IF ANY:

Cement must be circulated to surface behind 13 3/8" & 8 5/8" casing

Notify N.M.O.C.C. in sufficient time to witness cementing the 8 7/8" casing

NEW MEXICO OIL CONSERVATION COMMISSION
WELL LOCATION AND ACREAGE DEDICATION PLAT

Form C-102
Supersedes C-128
Effective 1-1-65

All distances must be from the outer boundaries of the Section.

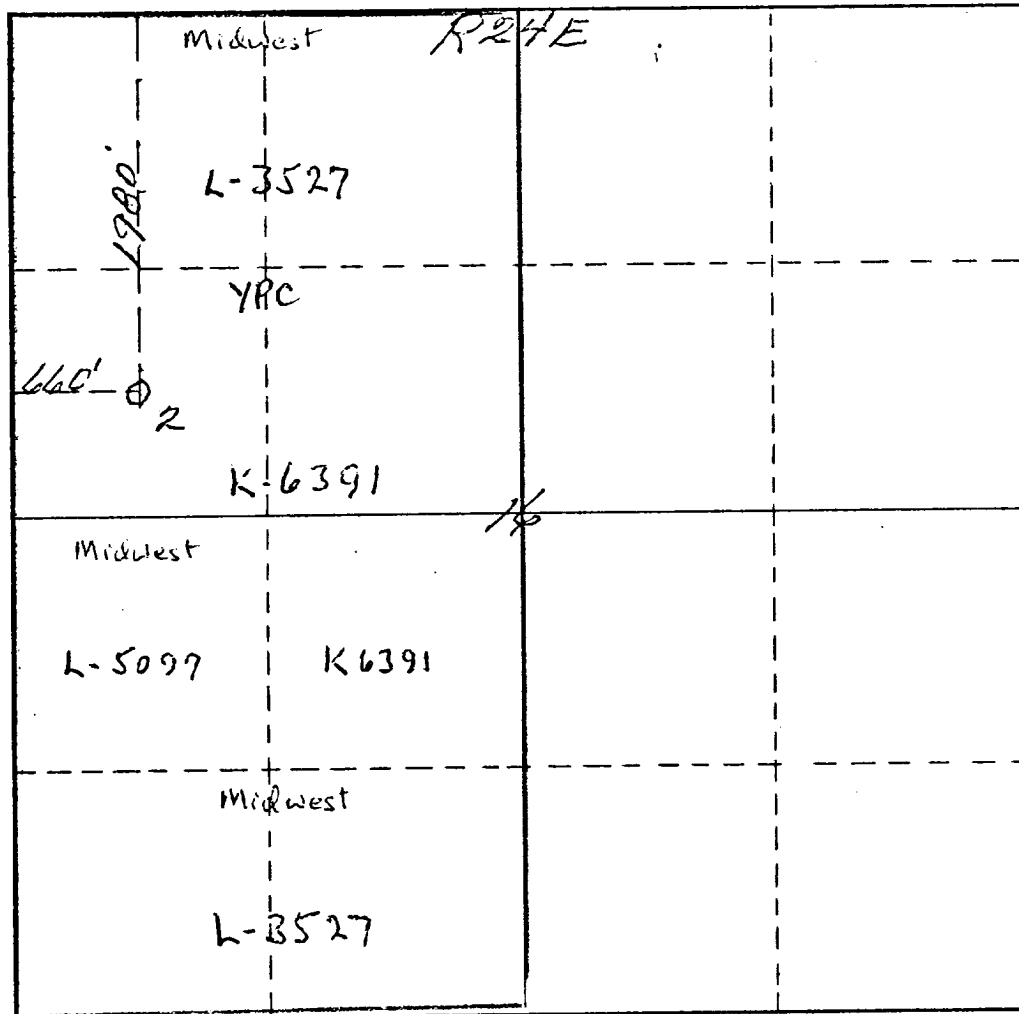
Operator <i>Yates Petroleum Corp</i>		Lease <i>State "DLI"</i>		Well No. <i>21</i>	
Unit Letter <i>E</i>	Section <i>16</i>	Township <i>19 South</i>	Range <i>24 East</i>	County <i>Eddy</i>	
Actual Footage Location of Well: <i>1980</i> feet from the <i>North</i> line and <i>660</i> feet from the <i>West</i> line					
Ground Level Elev. <i>3735</i>	Producing Formation <i>Morrow</i>		Pool <i>und. morrow</i>	Dedicated Acreage: <i>40</i> Acres	

1. Outline the acreage dedicated to the subject well by colored pencil or hachure marks on the plat below.
2. If more than one lease is dedicated to the well, outline each and identify the ownership thereof (both as to working interest and royalty).
3. If more than one lease of different ownership is dedicated to the well, have the interests of all owners been consolidated by communitization, unitization, force-pooling, etc?

☒ Yes ☐ No If answer is "yes," type of consolidation *Communitization*

If answer is "no," list the owners and tract descriptions which have actually been consolidated. (Use reverse side of this form if necessary.)

No allowable will be assigned to the well until all interests have been consolidated (by communitization, unitization, forced-pooling, or otherwise) or until a non-standard unit, eliminating such interests, has been approved by the Commission.



CERTIFICATION

I hereby certify that the information contained herein is true and complete to the best of my knowledge and belief.

Name *Edwin M. Lusk*

Position *Engineer*

Company *Yates Petroleum Corporation*

Date *9-12-74*

I hereby certify that the well location shown on this plat was plotted from field notes of actual surveys made by me or under my supervision, and that the same is true and correct to the best of my knowledge and belief.

Date Surveyed *September 13th 1974*

Registered Professional Engineer and/or Land Surveyor

James H. Brown
Certificate No. *542*