

NO. OF COPIES RECEIVED	
DISTRIBUTION	
SANTA FE	1
FILE	1
U.S.G.S.	2
LAND OFFICE	
OPERATOR	1

# RECEIVED NEW MEXICO OIL CONSERVATION COMMISSION

FEB 7 1980

O. C. D.  
ARTESIA, OFFICE

30-015-23173  
Form C-101  
Revised 1-1-65

5A. Indicate Type of Lease STATE <input type="checkbox"/> FEE <input checked="" type="checkbox"/>
5. State Oil & Gas Lease No.
7. Unit Agreement Name
8. Farm or Lease Name Johnson FE
9. Well No. 4
10. Field and Pool, or Wildcat Eagle Creek
12. County Eddy
19. Proposed Depth approx. 1500'
19A. Formation San Andres
20. Rotary or C.T. Rotary
21. Elevations (Show whether DF, RT, etc.) 3474.4 GL
21A. Kind & Status Plug. Bond Blanket
21B. Drilling Contractor Cactus Drilling Co.
22. Approx. Date Work will start Soon after approval

## APPLICATION FOR PERMIT TO DRILL, DEEPEN, OR PLUG BACK

a. Type of Work DRILL <input checked="" type="checkbox"/> DEEPEN <input type="checkbox"/> PLUG BACK <input type="checkbox"/>
b. Type of Well OIL WELL <input checked="" type="checkbox"/> GAS WELL <input type="checkbox"/> OTHER <input type="checkbox"/>
2. Name of Operator Yates Petroleum Corporation
3. Address of Operator 207 South 4th Street, Artesia, New Mexico 88210
4. Location of Well UNIT LETTER A LOCATED 990 FEET FROM THE North LINE 330' FEET FROM THE East LINE OF SEC. 23 TWP. 17S RGE. 25E NMPM
13. PROPOSED CASING AND CEMENT PROGRAM

SIZE OF HOLE	SIZE OF CASING	WEIGHT PER FOOT	SETTING DEPTH	SACKS OF CEMENT	EST. TOP
15"	10 3/4"	32#	approx. 400'	250 circulate	
9 7/8"	7"	20#	approx. 1200'	900 circulate	
6 1/4"	4 1/2 & 5 1/2"	10.5# & 15.5#	approx. 1500'	150 sacks	

Propose to drill a San Andres test, Approximately 400' of 10 3/4" casing will be run and cemented to the surface to shut off surface gravel and caving, and 7" casing will be run 100' below the Artesian Zone, cemented to the surface. A tapered oil string will be run and cemented, perforated and sand frac'd for production.

MUD PROGRAM: Fresh water mud w/LCM from surface to 1200', fresh water to total depth.

BOP PROGRAM: BOP's to be installed on 7" casing and tested daily for operational.

APPROVAL VALID  
FOR 90 DAYS UNLESS  
DRILLING COMMENCED,

EXPIRES 5-8-80

ABOVE SPACE DESCRIBE PROPOSED PROGRAM: IF PROPOSAL IS TO DEEPEN OR PLUG BACK, GIVE DATA ON PRESENT PRODUCTIVE ZONE AND PROPOSED NEW PRODUCTIVE ZONE. GIVE BLOWOUT PREVENTER PROGRAM, IF ANY.

I hereby certify that the information above is true and complete to the best of my knowledge and belief.

Signed Alvin Rodriguez Title Geographer Date 2/7/80  
(This space for State Use)

APPROVED BY W.A. Gressett TITLE SUPERVISOR, DISTRICT II DATE FEB 8 1980  
CONDITIONS OF APPROVAL, IF ANY:

Cement must be circulated to surface behind all casing the 7" casing

NEW MEXICO OIL CONSERVATION COMMISSION  
WELL LOCATION AND ACREAGE DEDICATION PLAT

Form C-102  
Supersedes C-128  
Effective 1-1-65

All distances must be from the outer boundaries of the Section.

Operator <b>YATES PETROLEUM CORPORATION</b>		Lease <b>Johnson FE</b>		Well No. <b>4</b>
Unit Letter <b>A</b>	Section <b>23</b>	Township <b>17 South</b>	Range <b>25 East</b>	County <b>Eddy</b>
Actual Footage Location of Well: <b>990</b> feet from the <b>North</b> line and <b>330</b> feet from the <b>East</b> line				
Ground Level Elev. <b>3474.4</b>	Producing Formation <b>San Andres</b>	Pool <b>Eagle Creek S.A.</b>	Dedicated Acreage: <b>40</b> Acres	

1. Outline the acreage dedicated to the subject well by colored pencil or hachure marks on the plat below.
2. If more than one lease is dedicated to the well, outline each and identify the ownership thereof (both as to working interest and royalty).
3. If more than one lease of different ownership is dedicated to the well, have the interests of all owners been consolidated by communitization, unitization, force-pooling, etc?

☐ Yes ☐ No If answer is "yes," type of consolidation \_\_\_\_\_

If answer is "no," list the owners and tract descriptions which have actually been consolidated. (Use reverse side of this form if necessary.) \_\_\_\_\_

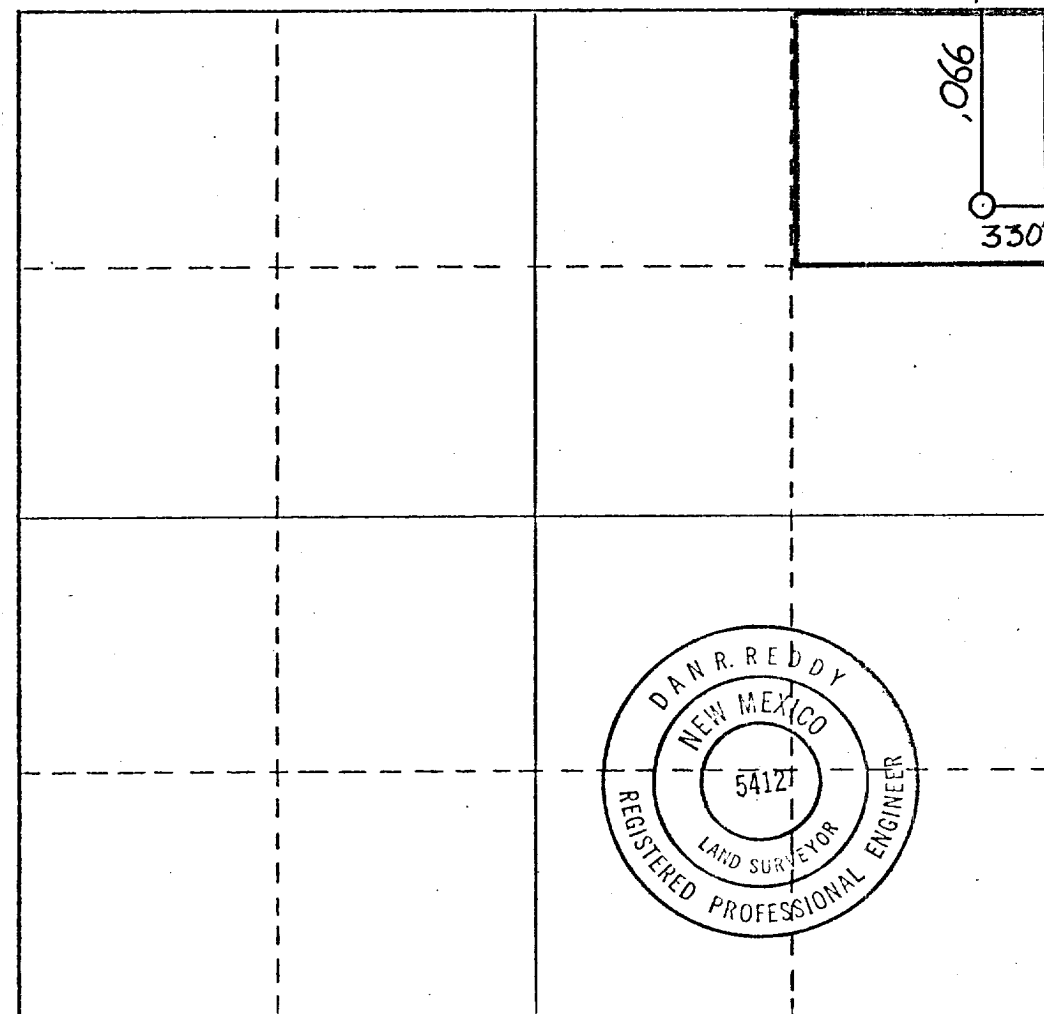
No allowable will be assigned to the well until all interests have been consolidated (by communitization, unitization, forced-pooling, or otherwise) or until a non-standard unit, eliminating such interests, has been approved by the Commission.

RECEIVED

FEB 7 1980

O. C. D.

ARTESIA, OFFICE



CERTIFICATION

I hereby certify that the information contained herein is true and complete to the best of my knowledge and belief.

*Gliserio Rodriguez*  
Name

Gliserio Rodriguez

Position

Geographer

Company

Yates Petroleum Corp.

Date

February 5, 1980

I hereby certify that the well location shown on this plat was plotted from field notes of actual surveys made by me or under my supervision, and that the same is true and correct to the best of my knowledge and belief.

Date Surveyed

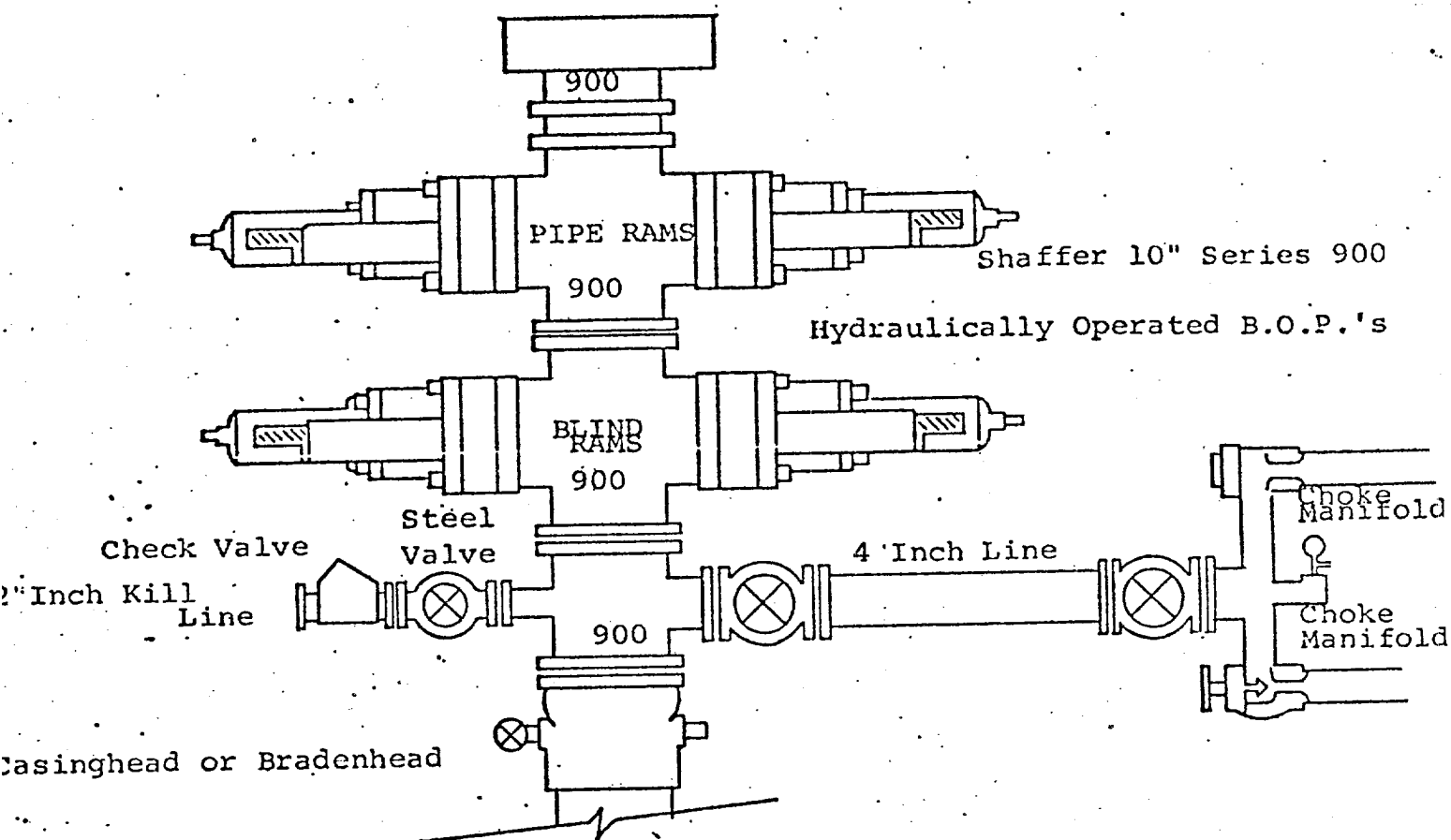
Nov. 6, 1979

Registered Professional Engineer and/or Land Surveyor

*Dan R. Reddy*  
Certificate No.

NM PE&LS #5412

0 330 660 990 1320 1650 1980 2310 2640 2970 3300 3630 3960 4290 4620 4950 5280 5610 5940 6270 6600



THE FOLLOWING CONSTITUTE MINIMUM BLOWOUT PREVENTER REQUIREMENTS

1. All preventers to be hydraulically operated with secondary manual controls installed prior to drilling out from under casing.
2. Choke outlet to be a minimum of 4" diameter.
3. Kill line to be of all steel construction of 2" minimum diameter.
4. All connections from operating manifolds to preventers to be all steel. hole or tube a minimum of one inch in diameter.
5. The available closing pressure shall be at least 15% in excess of that required with sufficient volume to operate the B.O.P.'s.
6. All connections to and from preventer to have a pressure rating equivalent to that of the B.O.P.'s.
7. Inside blowout preventer to be available on rig floor.
8. Operating controls located a safe distance from the rig floor.
9. Hole must be kept filled on trips below intermediate casing. Operator not responsible for blowouts resulting from not keeping hole full.
10. D. P. float must be installed and used below zone of first gas intrusion.