

NO. OF COPIES RECEIVED	
DISTRIBUTION	
SANTA FE	1
FILE	1
U.S.G.S.	2
LAND OFFICE	
OPERATOR	1

RECEIVED  
NEW MEXICO OIL CONSERVATION COMMISSION

MAR 11 1981

O. C. D.  
ARTESIA, OFFICE

Form C-101  
Revised 1-1-77

1A. Indicate type of permit	STATE <input type="checkbox"/>	FED <input checked="" type="checkbox"/>
2. State of New Mexico		

APPLICATION FOR PERMIT TO DRILL, DEEPEN, OR PLUG BACK

1a. Type of Work		DRILL <input checked="" type="checkbox"/>		DEEPEN <input type="checkbox"/>		PLUG BACK <input type="checkbox"/>	
b. Type of Well		OIL WELL <input checked="" type="checkbox"/>		GAS WELL <input type="checkbox"/>		OTHER <input type="checkbox"/>	
		SINGLE ZONE <input type="checkbox"/>		MULTIPLE ZONE <input type="checkbox"/>			
c. Name of Operator							
Yates Petroleum Corporation							
d. Address of Operator							
207 S. 4th Street, Artesia, NM 88210							
4. Location of Well							
UNIT LETTER		E		LOCATED		1650	
				FEET FROM THE		North	
AND		330		FEET FROM THE		West	
				LINE OF		7	
				TOWNSHIP		19S	
				RANGE		25E	
5. Name of Well							
Glass-Kincaid "OS"							
6. Well No.							
2							
7. Name of Land Owner							
Penasco Draw SA-Yeso							
8. County							
Eddy							
9. Depth of Well							
3100'							
10. Completion							
Yeso							
Rotary							
11. Operations (show whether DE, RI, etc.)							
3602 GL							
12A. Kind of Completion							
Blanket							
12B. Drilling Method							
ASAP							

23.

PROPOSED CASING AND CEMENT PROGRAM

SIZE OF HOLE	SIZE OF CASING	WEIGHT PER FOOT	SETTING DEPTH	SACKS OF CEMENT	EST. TOP
15"	10 3/4"	32.75# J-55	approx. 310'	250	circulate
9 1/2"	7"	20# J-55	approx. 970'	500	circulate
6 1/4"	4 1/2"	9.5# J-55	approx. 3100'	250	circulate

We propose to drill and test the Yeso and San Andres formations. Approximately 310' of surface casing will be set to shut off gravel and caving. Intermediate casing well be set at least 100' below the Artesian Water Zone. 4 1/2 production casing will be run, perforated and possibly sand frac'd for production.

MUD PROGRAM: Fresh water Gel to 970' fresh water to TD.

BOP PROGRAM: BOP's will be installed on 7" casing and tested, pipe rams daily blind rams on trips.

APPROVAL VALID FOR 180 DAYS  
PERMIT EXPIRES 9-13-81  
UNLESS DRILLING UNDERWAY

This location was originally approved as Penasco #2 for Conoco, Inc. ID# 30-015-23513.

IN ABOVE SPACE DESCRIBE PROPOSED PROGRAM: IF PROPOSAL IS TO DEEPEN OR PLUG BACK, GIVE DATA ON PRESENT PRODUCTIVE ZONE AND PROPOSED NEW PRODUCTIVE ZONE. GIVE BLOWOUT PREVENTER PROGRAM, IF ANY.

I hereby certify that the information above is true and complete to the best of my knowledge and belief.

Signed [Signature] Title Geographer Date 3-9-81

(This space for State Use)

APPROVED BY [Signature] TITLE SUPERVISOR, DISTRICT II DATE MAR 13 1981

CONDITIONS OF APPROVAL, IF ANY:

Cement must be circulated to surface behind all casing

Notify N.M.O.C.C. in sufficient time to witness cementing

7"

NEW MEXICO OIL CONSERVATION COMMISSION  
WELL LOCATION AND ACREAGE DEDICATION PLAT

Form C-102  
Supersedes C-123  
Effective 1-1-65

All distances must be from the outer boundaries of the Section.

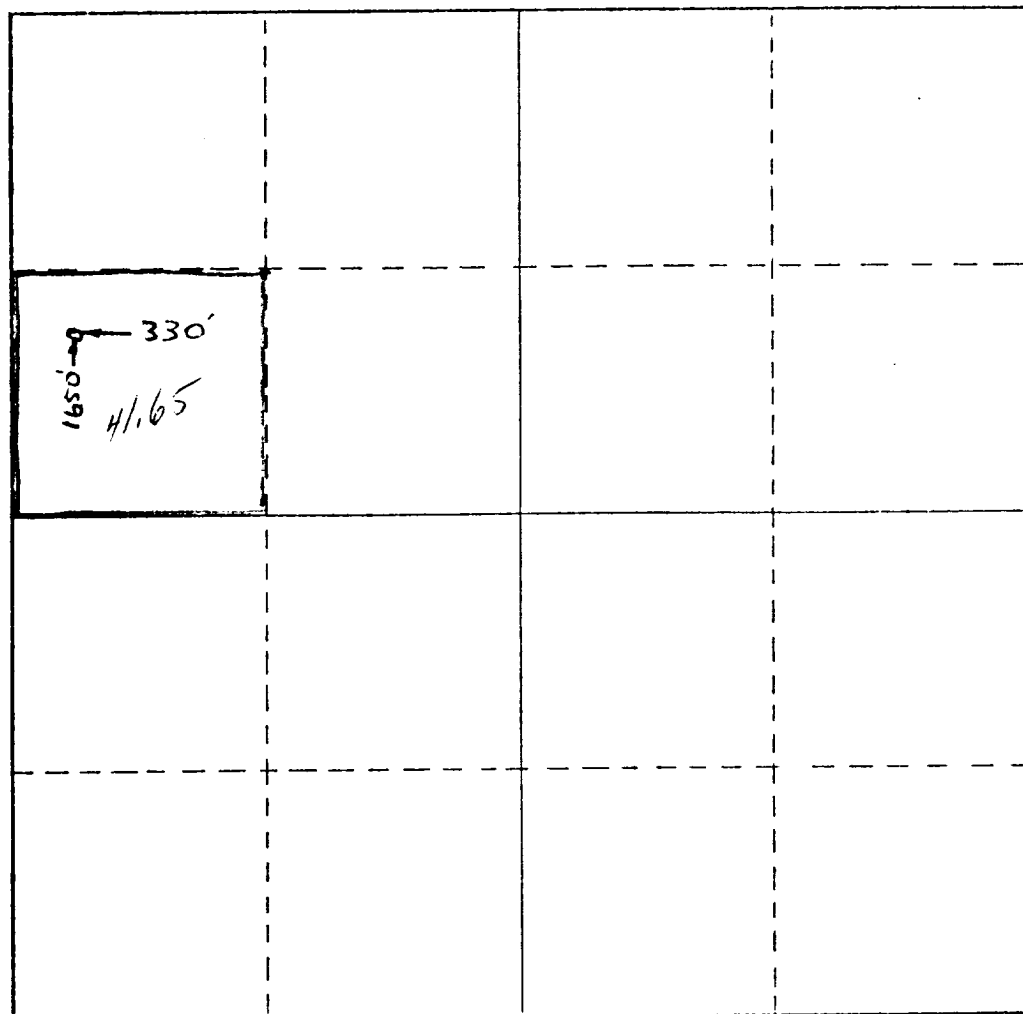
Operator <i>Yates Petroleum Corporation</i>		Lease <i>Glass-Kincaid "O &amp; S"</i>		Well No. <i>2</i>
Unit Letter <i>E</i>	Section <i>7</i>	Township <i>19 South</i>	Range <i>25 East</i>	County <i>Eddy</i>
Actual Footage Location of Well: <i>1650</i> feet from the <i>North</i> line and <i>330</i> feet from the <i>West</i> line				
Ground Level Elev. <i>3602</i>	Producing Formation <i>Yeso</i>	Pool <i>Penasco-Brown SA-420 Area</i>	Dedicated Acreage: <i>40 41/65</i> Acres	

1. Outline the acreage dedicated to the subject well by colored pencil or hatchure marks on the plat below.
2. If more than one lease is dedicated to the well, outline each and identify the ownership thereof (both as to working interest and royalty).
3. If more than one lease of different ownership is dedicated to the well, have the interests of all owners been consolidated by communitization, unitization, force-pooling, etc?

☐ Yes ☐ No If answer is "yes," type of consolidation \_\_\_\_\_

If answer is "no," list the owners and tract descriptions which have actually been consolidated. (Use reverse side of this form if necessary.) \_\_\_\_\_

No allowable will be assigned to the well until all interests have been consolidated (by communitization, unitization, forced-pooling, or otherwise) or until a non-standard unit, eliminating such interests, has been approved by the Commission.



CERTIFICATION

I hereby certify that the information contained herein is true and complete to the best of my knowledge and belief.

*Gliserio Rodriguez*  
Name

*GLISERIO RODRIGUEZ*  
Position

*GEOGRAPHER*  
Company

*YATES PETROLEUM CORP.*  
Date

*3-9-81*

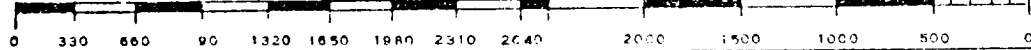
I hereby certify that the well location shown on this plat was plotted from field notes of actual surveys made by me or under my supervision, and that the same is true and correct to the best of my knowledge and belief.

*Refer to Original Plat*

Date Surveyed

Registered Professional Engineer  
and/or Land Surveyor

Certificate No.



NEW MEXICO OIL CONSERVATION COMMISSION  
WELL LOCATION AND ACREAGE DEDICATION AT

Form C-102  
Supersedes C-128  
Effective 12-65

All distances must be from the outer boundaries of the Section

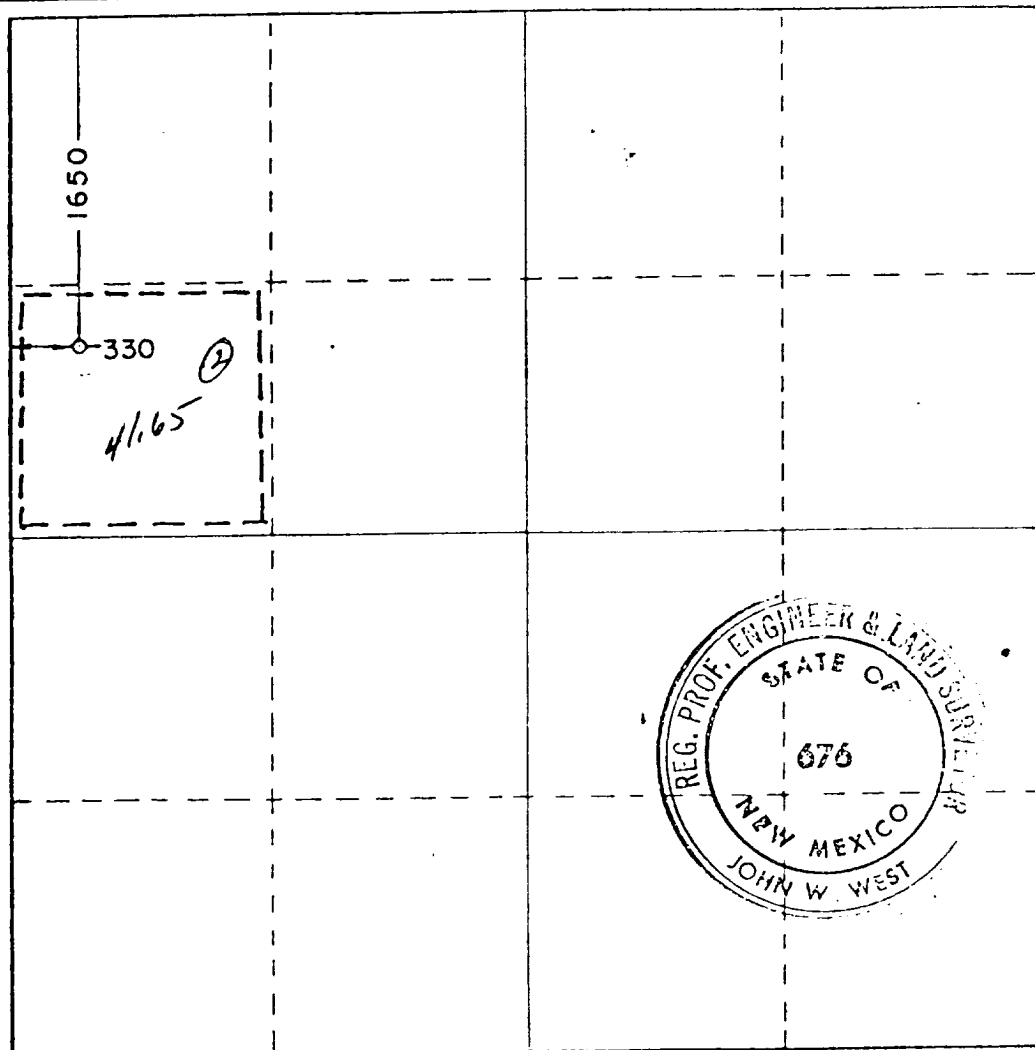
Operator <b>Conoco Inc.</b>		Lease <b>Penasco</b>		Well No. <b>2</b>
Unit Letter <b>E</b>	Section <b>7</b>	Township <b>19 south</b>	Range <b>25 east</b>	County <b>Eddy</b>
Actual Footage Location of Well: <div style="display: flex; justify-content: space-between;"> <span>1650 feet from the north line and</span> <span>330 feet from the west line</span> </div>				
Ground Level Elev. <b>3601.59</b>	Producing Formation <b>Yeso-San Andres Assoc</b>	Pool <b>SA-Yeso Penasco Draw Yeso-San Andres Assoc.</b>	Dedicated Acreage <b>41.65</b> Acres	

1. Outline the acreage dedicated to the subject well by colored pencil or hatchure marks on the plat below.
2. If more than one lease is dedicated to the well, outline each and identify the ownership thereof (both as to working interest and royalty).
3. If more than one lease of different ownership is dedicated to the well, have the interests of all owners been consolidated by communitization, unitization, force-pooling, etc?

☐ Yes    ☐ No    If answer is "yes," type of consolidation \_\_\_\_\_

If answer is "no," list the owners and tract descriptions which have actually been consolidated. (Use reverse side of this form if necessary.) \_\_\_\_\_

No allowable will be assigned to the well until all interests have been consolidated (by communitization, unitization, forced-pooling, or otherwise) or until a non-standard unit, eliminating such interests, has been approved by the Commission.



**CERTIFICATION**

I hereby certify that the information contained herein is true and complete to the best of my knowledge and belief.

*John A. Buntingfield*  
Position

Administrative Supervisor

Company

Conoco Inc.

Date

10/21/80

I hereby certify that the well location shown on this plat was plotted from field notes of actual surveys made by me or under my supervision, and that the same is true and correct to the best of my knowledge and belief.

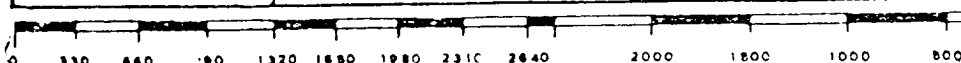
Date Surveyed

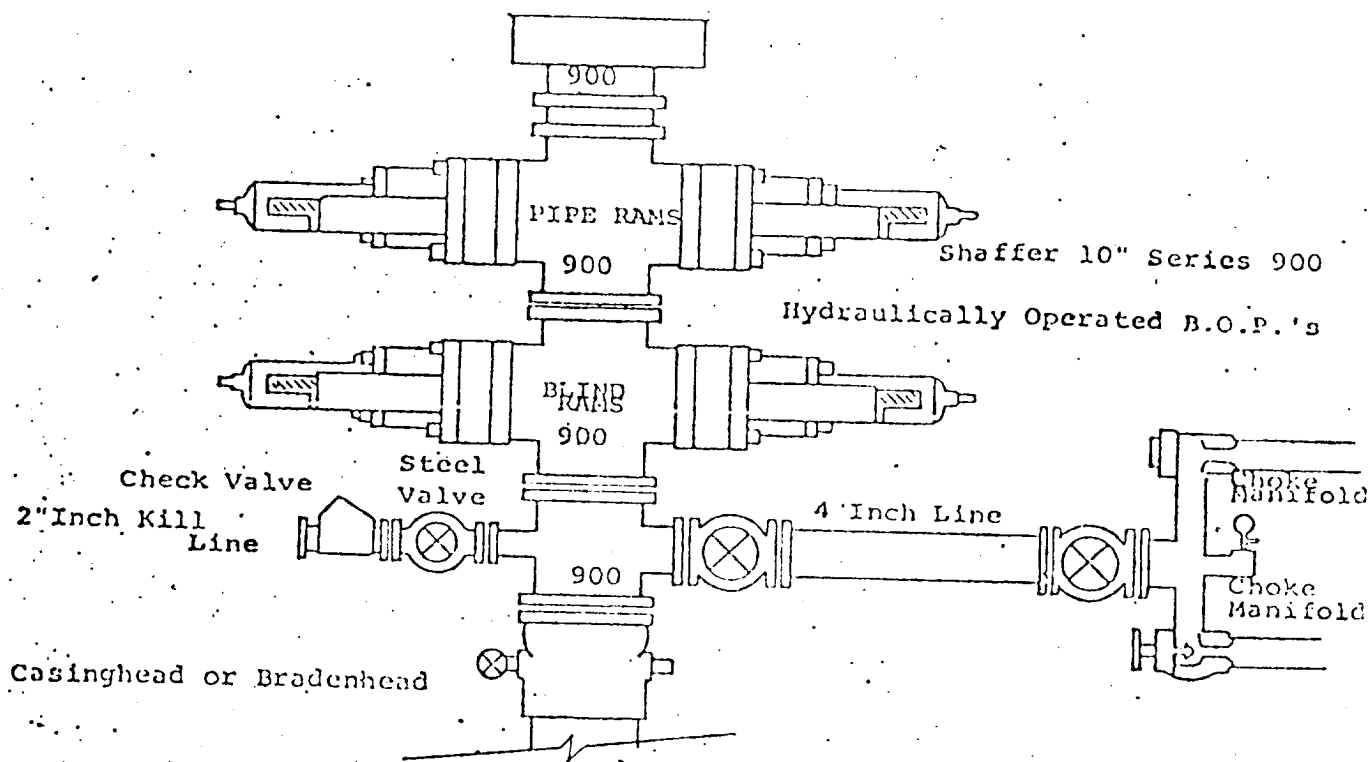
9-12-80

Registered Professional Engineer and/or Land Surveyor

*John W. West*

Certificate No. **JOHN W. WEST 676**  
**PATRICK A. ROMERO 6862**  
**Ronald J. Eickson 3222**





THE FOLLOWING CONSTITUTE MINIMUM BLOWOUT PREVENTER REQUIREMENTS

1. All preventers to be hydraulically operated with secondary manual controls installed prior to drilling out from under casing.
2. Choke outlet to be a minimum of 4" diameter.
3. Kill line to be of all steel construction of 2" minimum diameter.
4. All connections from operating manifolds to preventers to be all steel, hole or tube a minimum of one inch in diameter.
5. The available closing pressure shall be at least 15% in excess of that required with sufficient volume to operate the B.O.P.'s.
6. All connections to and from preventer to have a pressure rating equivalent to that of the B.O.P.'s.
7. Inside blowout preventer to be available on rig floor.
8. Operating controls located a safe distance from the rig floor.
9. Hole must be kept filled on trips below intermediate casing. Operator not responsible for blowouts resulting from not keeping hole full.
10. D. P. float must be installed and used below zone of first gas intrusion.



BRUCE KING  
GOVERNOR

LARRY KEHOE  
SECRETARY

STATE OF NEW MEXICO  
ENERGY AND MINERALS DEPARTMENT  
OIL CONSERVATION DIVISION  
ARTESIA DISTRICT OFFICE

February 4, 1981

P.O. DRAWER DD  
ARTESIA, NEW MEXICO 88210  
(505) 748-4861  
748-1283

Conoco Inc.  
P.O. Box 460  
Hobbs, NM 88240

Re: Penasco  
#2-E-7-19-25  
Eddy County, NM

Gentlemen:

Ninety days have elapsed since approval of Commission Form C-101, Application For Permit To Drill, for the subject well and to date no progress reports, Forms C-103, have been received.

Therefore, Commission approval of Form C-101 has now expired and no drilling operations are to be initiated or continued without further notice to and approval by the Commission. Pending such approval, this will be considered an abandoned location.

Sincerely,

A handwritten signature in cursive script, reading "W. A. Gressett".

W. A. Gressett  
Supervisor, District II

WAG:br  
Xc: Santa Fe OCD

4-27-81  
2-27-81